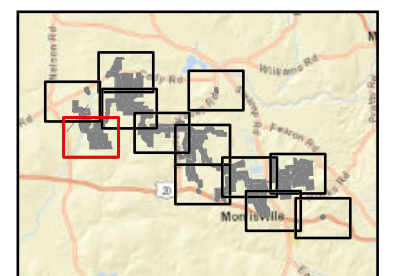


### Hoffman Falls Wind

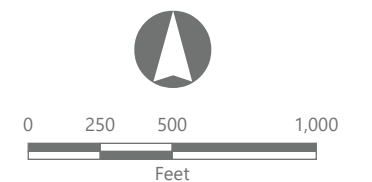
Towns of Eaton, Fenner, Nelson and Smithfield, Madison County, New York

**94-c Permit Application  
Matter No. 23-00038**

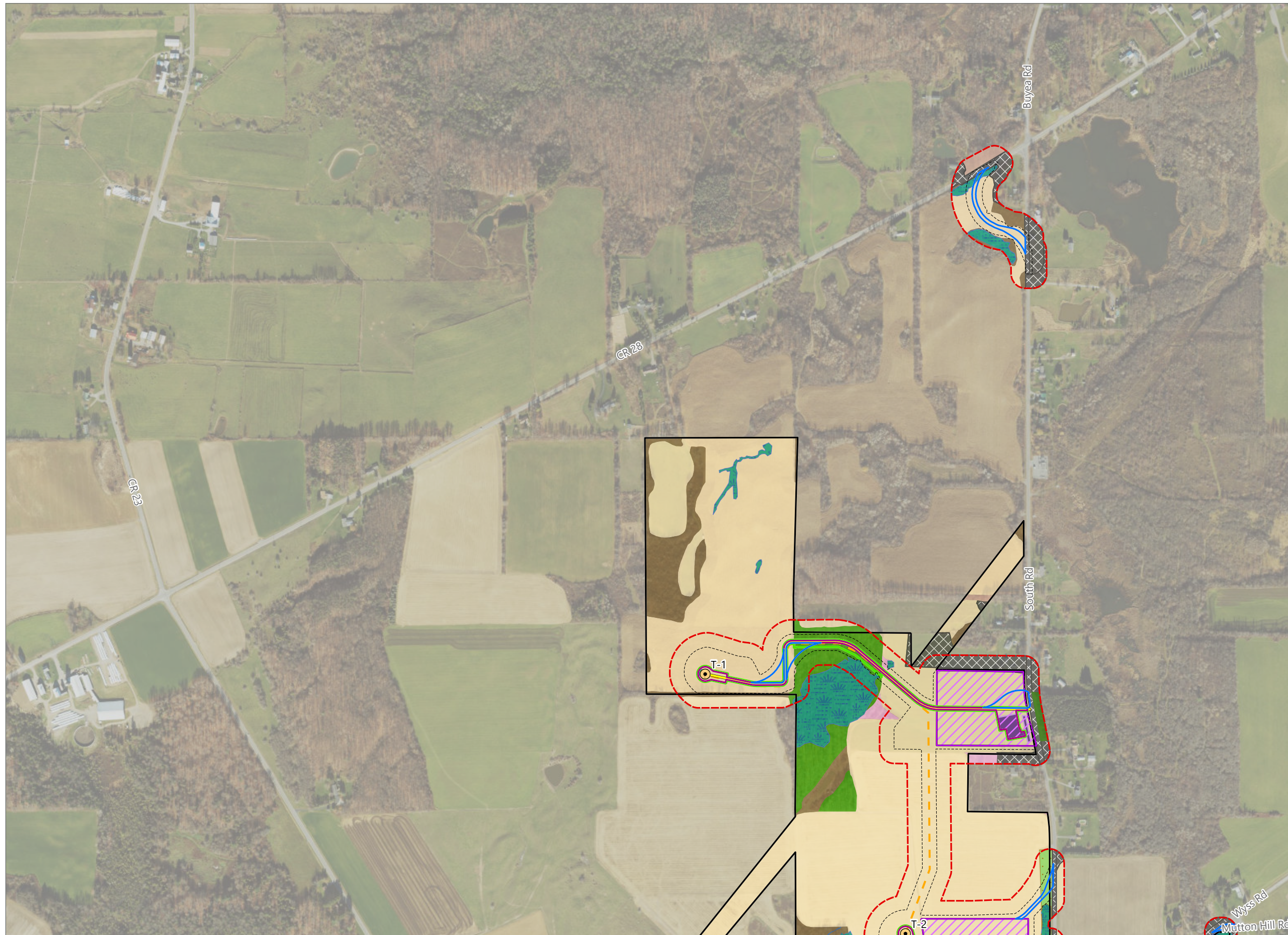
- Ecological Cover Type**
- Developed/Disturbed
  - Cropland/Field Crops
  - Cropland/Row Crops
  - Pastureland
  - Stream
  - Wetland
  - Beech-Maple Mesic Forest
  - Spruce/Fir Plantation
  - Successional Northern Hardwoods
  - Successional Old Field
  - Successional Shrubland
  - Successional Spruce/Fir Plantation
- Facility Components**
- Wind Turbine
  - Access Road
  - Collection Line
  - Laydown Yard
  - Limit of Impervious Surface
  - Limit of Vegetation Management
  - Limit of Disturbance
  - Temporary Turning Improvement
  - Plant Community Study Area
  - Facility Site



Sheet 1 of 12



Prepared February 5, 2024  
Basemap: USDA NAIP "2022 New York 60cm" orthoimagery map service

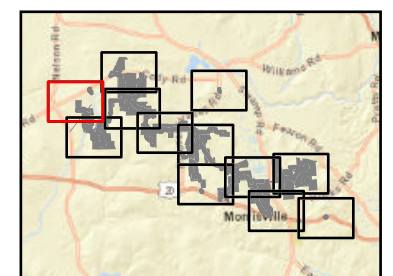


### Hoffman Falls Wind

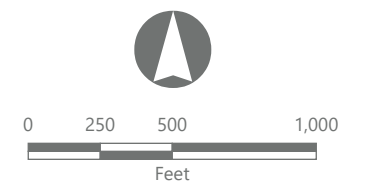
Towns of Eaton, Fenner, Nelson and Smithfield, Madison County, New York

**94-c Permit Application  
Matter No. 23-00038**

- Ecological Cover Type**
- Developed/Disturbed
  - Cropland/Row Crops
  - Pastureland
  - Stream
  - Wetland
  - Hemlock-Northern Hardwood Forest
  - Beech-Maple Mesic Forest
  - Spruce/Fir Plantation
  - Successional Northern Hardwoods
  - Successional Old Field
  - Successional Shrubland
- Facility Components**
- Wind Turbine
  - Access Road
  - Collection Line
  - O&M Building
  - Laydown Yard
  - Limit of Impervious Surface
  - Limit of Vegetation Management
  - Limit of Disturbance
  - Temporary Turning Improvement
  - Plant Community Study Area
  - Facility Site



Sheet 2 of 12



Prepared February 5, 2024  
Basemap: USDA NAIP '2022 New York 60cm' orthoimagery map service

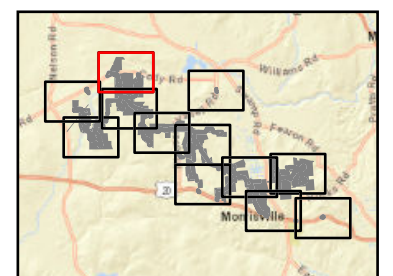


### Hoffman Falls Wind

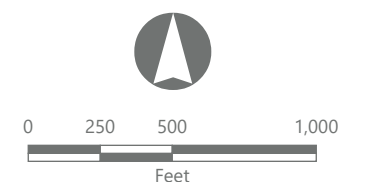
Towns of Eaton, Fenner, Nelson and Smithfield, Madison County, New York

**94-c Permit Application  
Matter No. 23-00038**

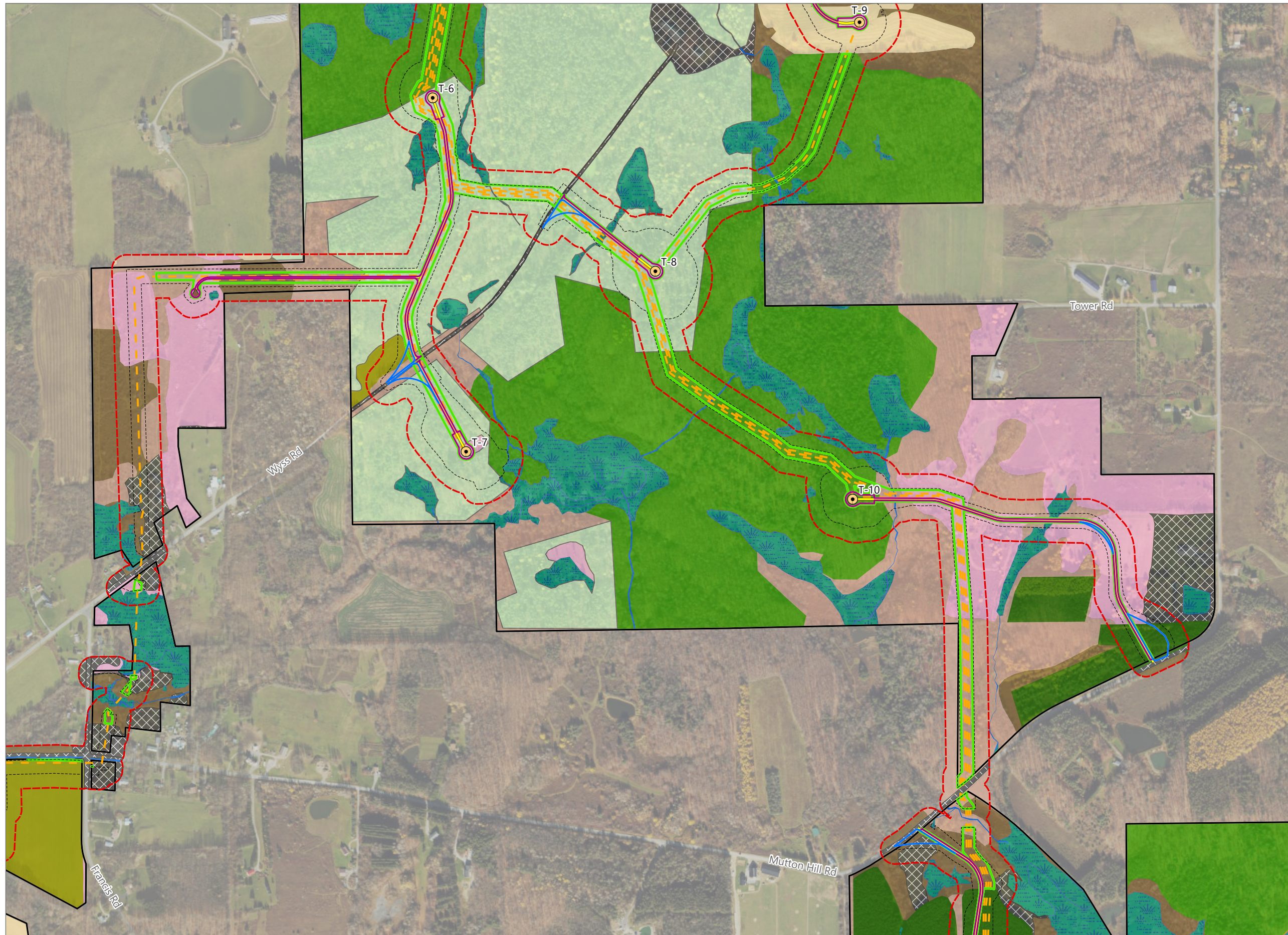
- Ecological Cover Type**
- Developed/Disturbed
  - Cropland/Field Crops
  - Cropland/Row Crops
  - Pastureland
  - Stream
  - Wetland
  - Beech-Maple Mesic Forest
  - Successional Northern Hardwoods
  - Successional Old Field
  - Successional Shrubland
  - Successional Spruce/Fir Plantation
- Facility Components**
- Wind Turbine
  - Access Road
  - Collection Line
  - Collection Substation
  - POI Substation
  - Laydown Yard
  - Limit of Impervious Surface
  - Limit of Vegetation Management
  - Limit of Disturbance
  - Temporary Turning Improvement
  - Plant Community Study Area
  - Facility Site



Sheet 3 of 12



Prepared February 5, 2024  
Basemap: USDA NAIP '2022 New York 60cm' orthoimagery map service

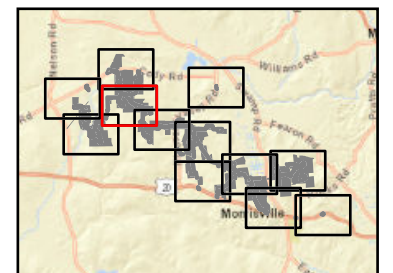


### Hoffman Falls Wind

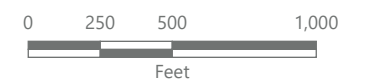
Towns of Eaton, Fenner, Nelson and Smithfield, Madison County, New York

**94-c Permit Application  
Matter No. 23-00038**

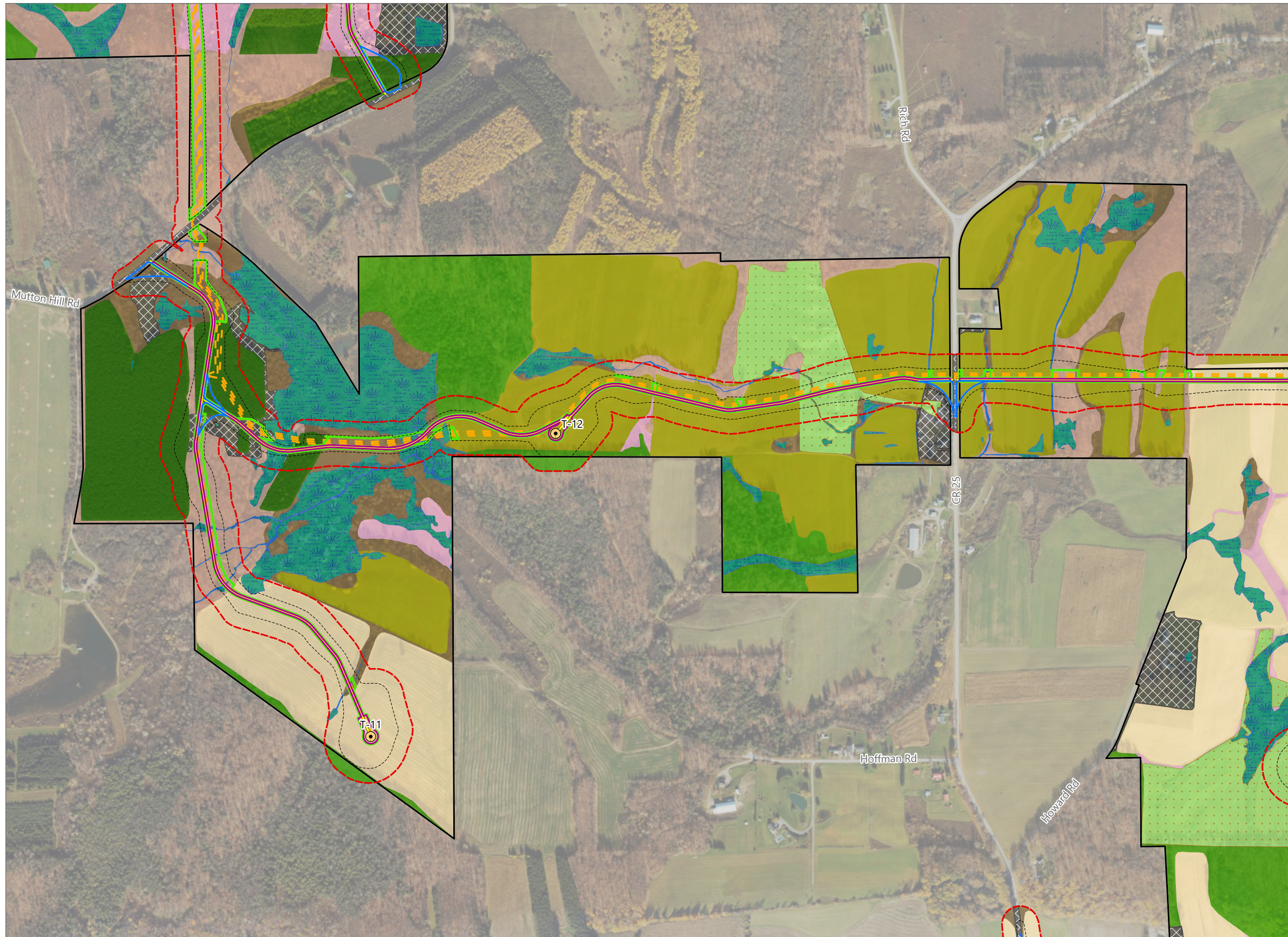
- Ecological Cover Type**
- Developed/Disturbed
  - Cropland/Field Crops
  - Cropland/Row Crops
  - Stream
  - Wetland
  - Beech-Maple Mesic Forest
  - Spruce/Fir Plantation
  - Successional Northern Hardwoods
  - Successional Old Field
  - Successional Shrubland
  - Successional Spruce/Fir Plantation
- Facility Components**
- Wind Turbine
  - ADLS Tower
  - Access Road
  - Collection Line
  - Limit of Impervious Surface
  - Limit of Vegetation Management
  - Limit of Disturbance
  - Temporary Turning Improvement
  - Plant Community Study Area
  - Facility Site



Sheet 4 of 12



Prepared February 5, 2024  
Basemap: USDA NAIP "2022 New York 60cm" orthoimagery map service

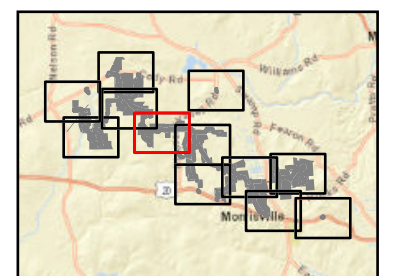


### Hoffman Falls Wind

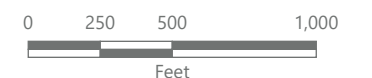
Towns of Eaton, Fenner, Nelson and Smithfield, Madison County, New York

**94-c Permit Application**  
**Matter No. 23-00038**

- Ecological Cover Type**
- Developed/Disturbed
  - Cropland/Field Crops
  - Cropland/Row Crops
  - Pastureland
  - Stream
  - Wetland
  - Beech-Maple Mesic Forest
  - Spruce/Fir Plantation
  - Successional Northern Hardwoods
  - Successional Old Field
  - Successional Shrubland
- Facility Components**
- Wind Turbine
  - Permanent MET Tower
  - Access Road
  - Collection Line
  - Limit of Impervious Surface
  - Limit of Vegetation Management
  - Limit of Disturbance
  - Temporary Turning Improvement
  - Plant Community Study Area
  - Facility Site



Sheet 5 of 12



Prepared February 5, 2024  
Basemap: USDA NAIP "2022 New York 60cm" orthoimagery map service

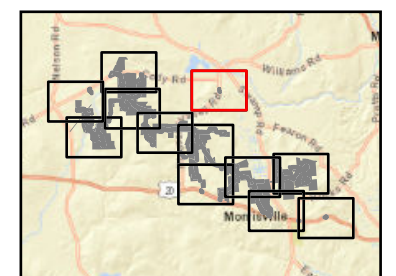


### Hoffman Falls Wind

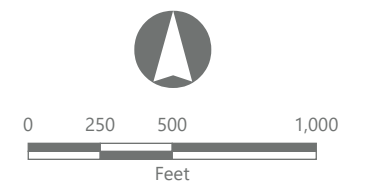
Towns of Eaton, Fenner, Nelson and Smithfield, Madison County, New York

**94-c Permit Application  
Matter No. 23-00038**

- Ecological Cover Type
- Developed/Disturbed
  - Cropland/Field Crops
  - Successional Old Field
  - Limit of Disturbance
  - Temporary Turning Improvement
  - Plant Community Study Area



Sheet 6 of 12



Prepared February 5, 2024  
Basemap: USDA NAIP "2022 New York 60cm" orthoimagery map service

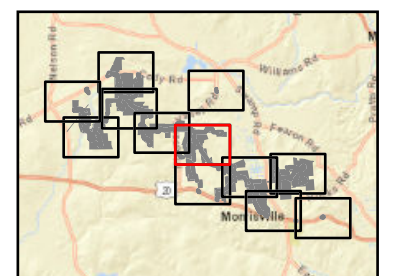


### Hoffman Falls Wind

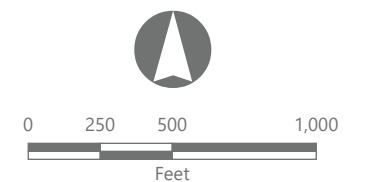
Towns of Eaton, Fenner, Nelson and Smithfield, Madison County, New York

**94-c Permit Application  
Matter No. 23-00038**

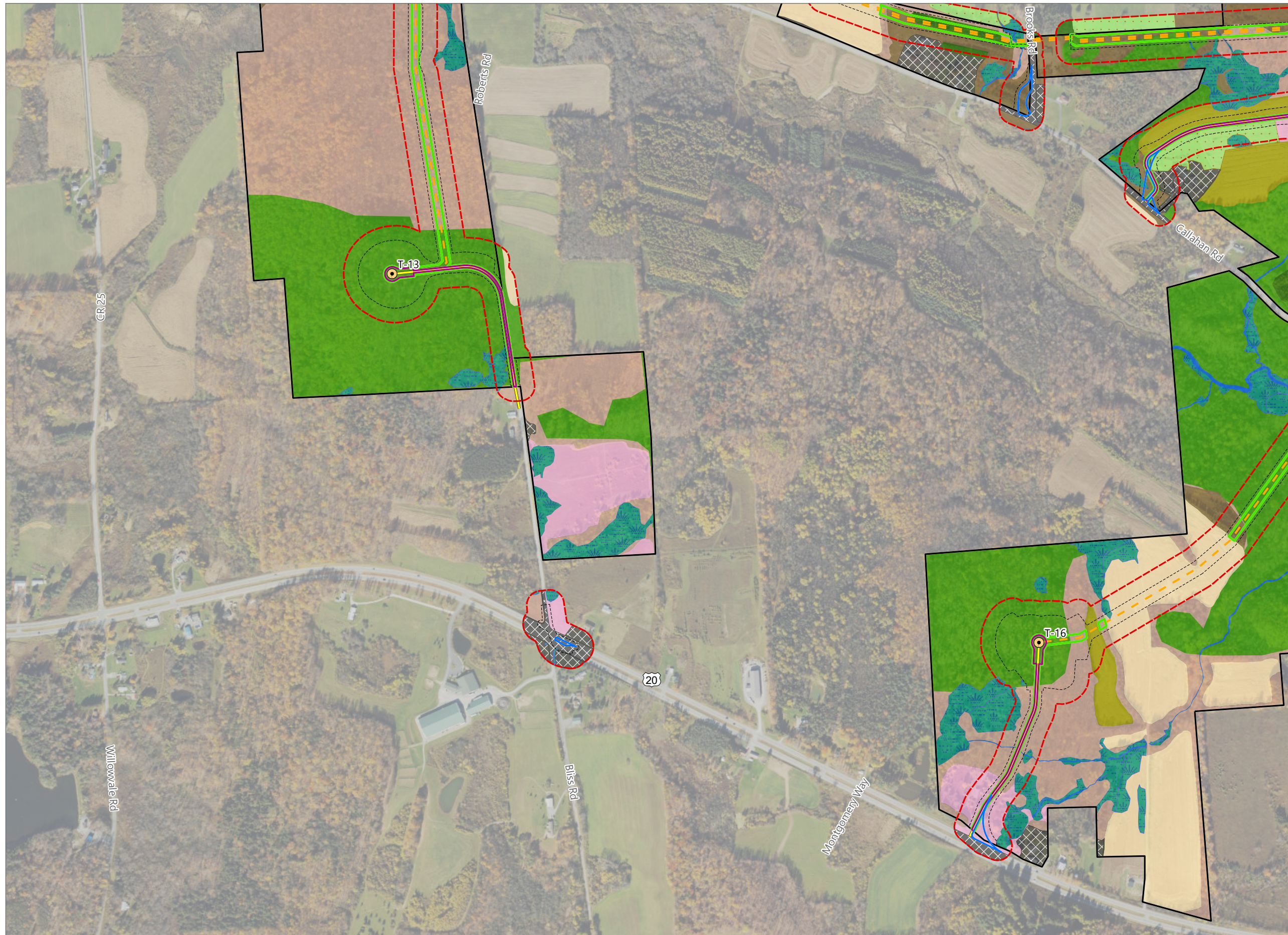
- Ecological Cover Type**
- Developed/Disturbed
  - Cropland/Field Crops
  - Cropland/Row Crops
  - Pastureland
  - Stream
  - Wetland
  - Beech-Maple Mesic Forest
  - Successional Northern Hardwoods
  - Successional Old Field
  - Successional Shrubland
- Facility Components**
- Wind Turbine
  - Permanent MET Tower
  - Access Road
  - Collection Line
  - Limit of Impervious Surface
  - Limit of Vegetation Management
  - Limit of Disturbance
  - Temporary Turning Improvement
  - Plant Community Study Area
  - Facility Site



Sheet 7 of 12



Prepared February 5, 2024  
Basemap: USDA NAIP "2022 New York 60cm" orthoimagery map service

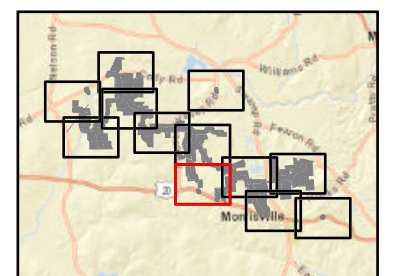


### Hoffman Falls Wind

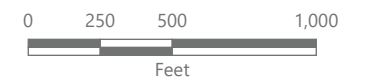
Towns of Eaton, Fenner, Nelson and Smithfield, Madison County, New York

**94-c Permit Application  
Matter No. 23-00038**

- Ecological Cover Type**
- Developed/Disturbed
  - Cropland/Field Crops
  - Cropland/Row Crops
  - Pastureland
  - Stream
  - Wetland
  - Beech-Maple Mesic Forest
  - Spruce/Fir Plantation
  - Successional Northern Hardwoods
  - Successional Old Field
  - Successional Shrubland
- Facility Components**
- Wind Turbine
  - Access Road
  - Collection Line
  - Limit of Impervious Surface
  - Limit of Vegetation Management
  - Limit of Disturbance
  - Temporary Turning Improvement
  - Plant Community Study Area
  - Facility Site



Sheet 8 of 12



Prepared February 5, 2024  
Basemap: USDA NAIP "2022 New York 60cm" orthoimagery map service



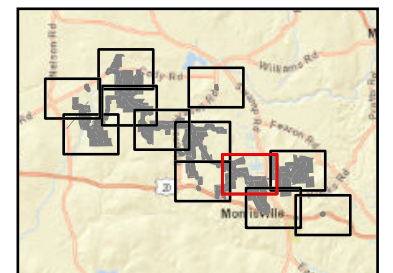


### Hoffman Falls Wind

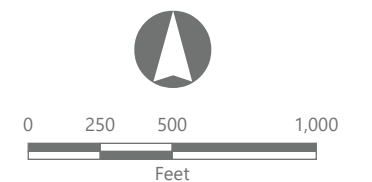
Towns of Eaton, Fenner, Nelson and Smithfield, Madison County, New York

**94-c Permit Application  
Matter No. 23-00038**

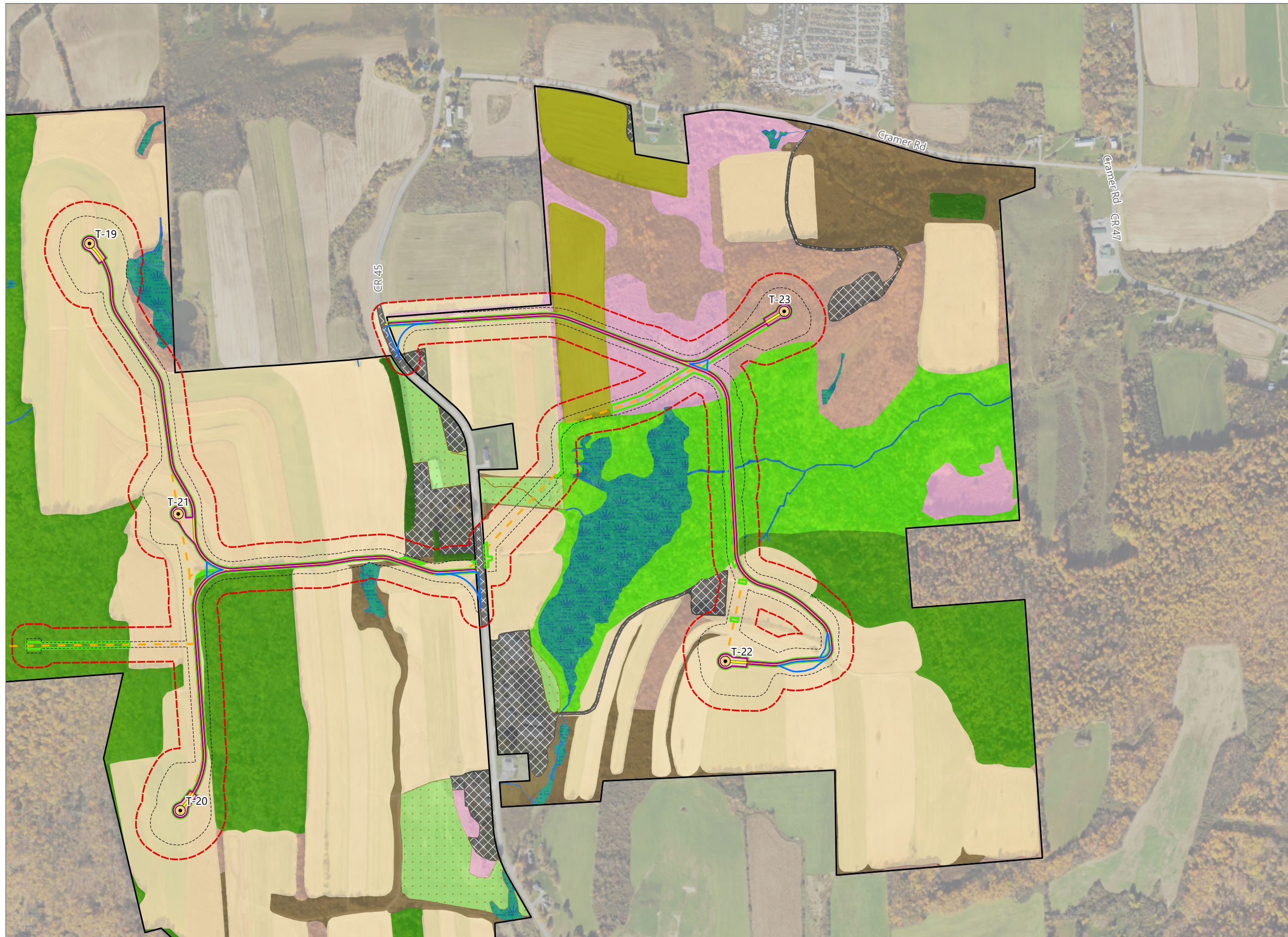
- Ecological Cover Type**
- Developed/Disturbed
  - Cropland/Field Crops
  - Cropland/Row Crops
  - Pastureland
  - Stream
  - Wetland
  - Beech-Maple Mesic Forest
  - Spruce/Fir Plantation
  - Successional Northern Hardwoods
  - Successional Old Field
  - Successional Shrubland
- Facility Components**
- Wind Turbine
  - Access Road
  - Collection Line
  - Laydown Yard
  - Limit of Impervious Surface
  - Limit of Vegetation Management
  - Limit of Disturbance
  - Temporary Turning Improvement
  - Plant Community Study Area
  - Facility Site



Sheet 9 of 12



Prepared February 5, 2024  
Basemap: USDA NAIP "2022 New York 60cm" orthoimagery map service

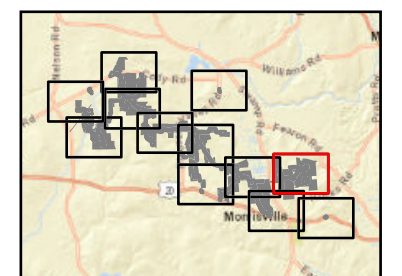


### Hoffman Falls Wind

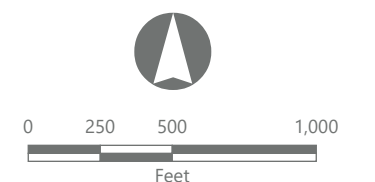
Towns of Eaton, Fenner, Nelson and Smithfield, Madison County, New York

**94-c Permit Application  
Matter No. 23-00038**

- Ecological Cover Type**
- Developed/Disturbed
  - Cropland/Field Crops
  - Cropland/Row Crops
  - Pastureland
  - Stream
  - Wetland
  - Hemlock-Northern Hardwood Forest
  - Beech-Maple Mesic Forest
  - Spruce/Fir Plantation
  - Successional Northern Hardwoods
  - Successional Old Field
  - Successional Shrubland
- Facility Components**
- Wind Turbine
  - Access Road
  - Collection Line
  - Limit of Impervious Surface
  - Limit of Vegetation Management
  - Limit of Disturbance
  - Temporary Turning Improvement
  - Plant Community Study Area
  - Facility Site

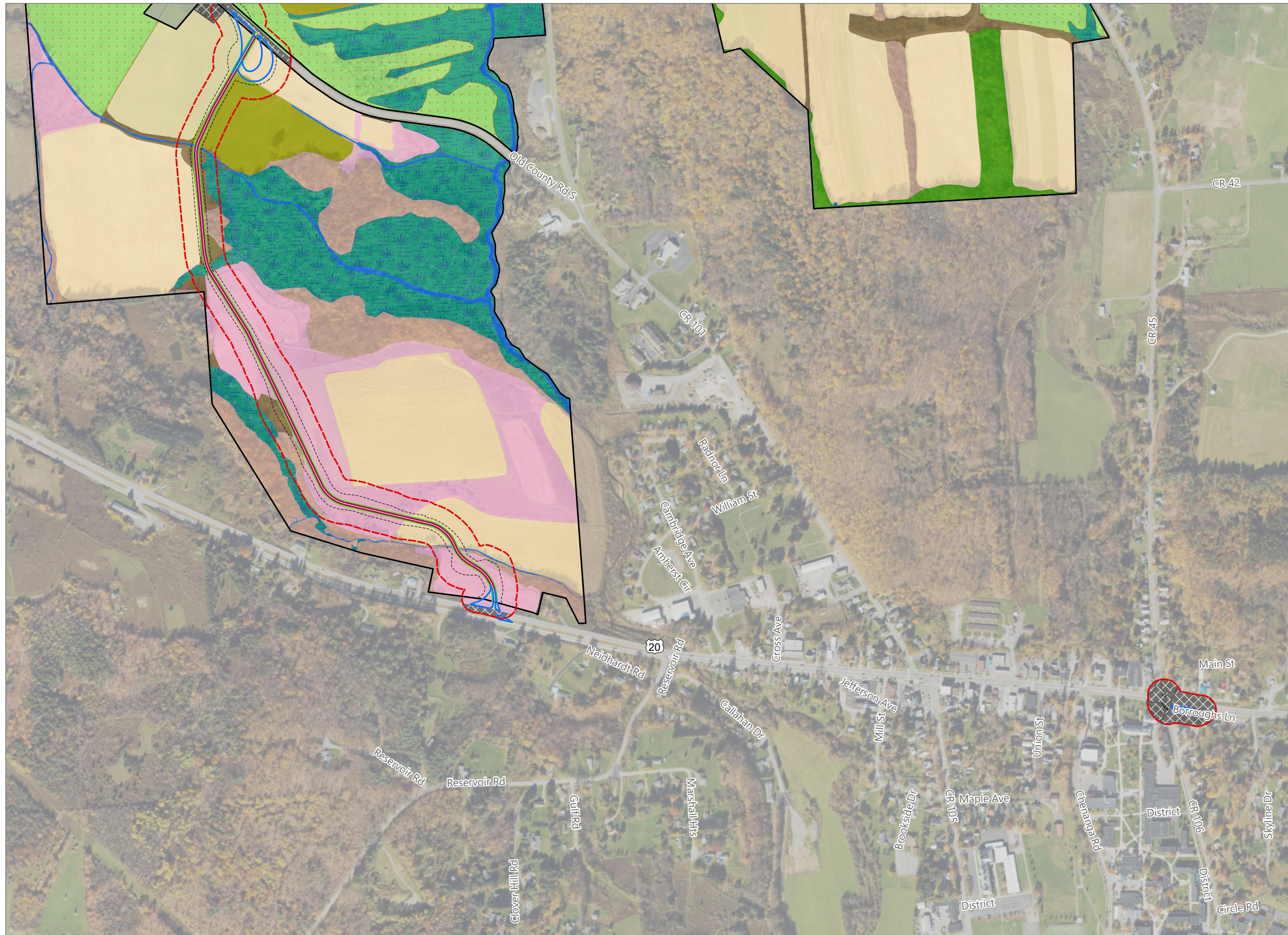


Sheet 10 of 12



Prepared February 5, 2024  
Basemap: USDA NAIP '2022 New York 60cm' orthoimagery map service

Figure 11-1. Plant Communities

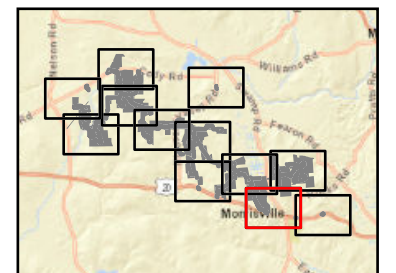


### Hoffman Falls Wind

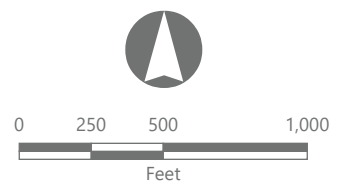
Towns of Eaton, Fenner, Nelson and  
Smithfield, Madison County,  
New York

#### 94-c Permit Application Matter No. 23-00038

- Ecological Cover Type
- Developed/Disturbed
  - Cropland/Field Crops
  - Cropland/Row Crops
  - Pastureland
  - Stream
  - Wetland
  - Beech-Maple Mesic Forest
  - Successional Northern Hardwoods
  - Successional Old Field
  - Successional Shrubland
- Facility Components
- Access Road
  - Limit of Impervious Surface
  - Limit of Vegetation Management
  - Limit of Disturbance
  - Temporary Turning Improvement
  - Plant Community Study Area
  - Facility Site



Sheet 11 of 12






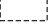


Prepared February 5, 2024  
Basemap: USDA NAIP "2022 New York 60cm" orthoimagery map service

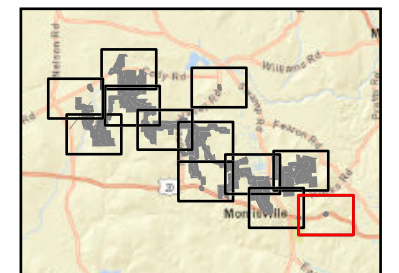


### Hoffman Falls Wind

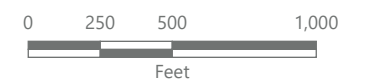
Towns of Eaton, Fenner, Nelson and Smithfield, Madison County, New York

**94-c Permit Application  
Matter No. 23-00038**

- Ecological Cover Type
-  Developed/Disturbed
  -  Cropland/Row Crops
  -  Successional Shrubland
  -  Limit of Disturbance
  -  Temporary Turning Improvement
  -  Plant Community Study Area



Sheet 12 of 12



Prepared February 5, 2024  
Basemap: USDA NAIP "2022 New York 60cm" orthoimagery map service