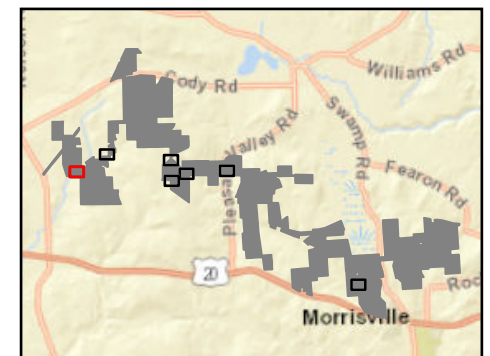


### Hoffman Falls Wind

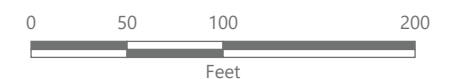
Towns of Eaton, Fenner, Nelson and Smithfield, Madison County, New York

**94-c Permit Application  
Matter No. 23-00038**

- Wetlands and Streams**
- Culvert
  - Wetland Continues
  - Delineated Stream w/ State & Federal Jurisdiction
  - State-Regulated Stream (SRS) 50-foot Offset
  - Delineated Wetland Non-jurisdictional
  - Delineated Wetland w/ State & Federal Jurisdiction
- State-Regulated Stream Impact**
- State-Regulated Stream Impact
  - State-Regulated Stream 50-foot Offset Area Impact
- Grading**
- Grading
- Facility Components**
- Access Road
  - Collection Line
  - Collection Line Bore
  - Limit of Grading
  - Limit of Disturbance
  - Facility Site



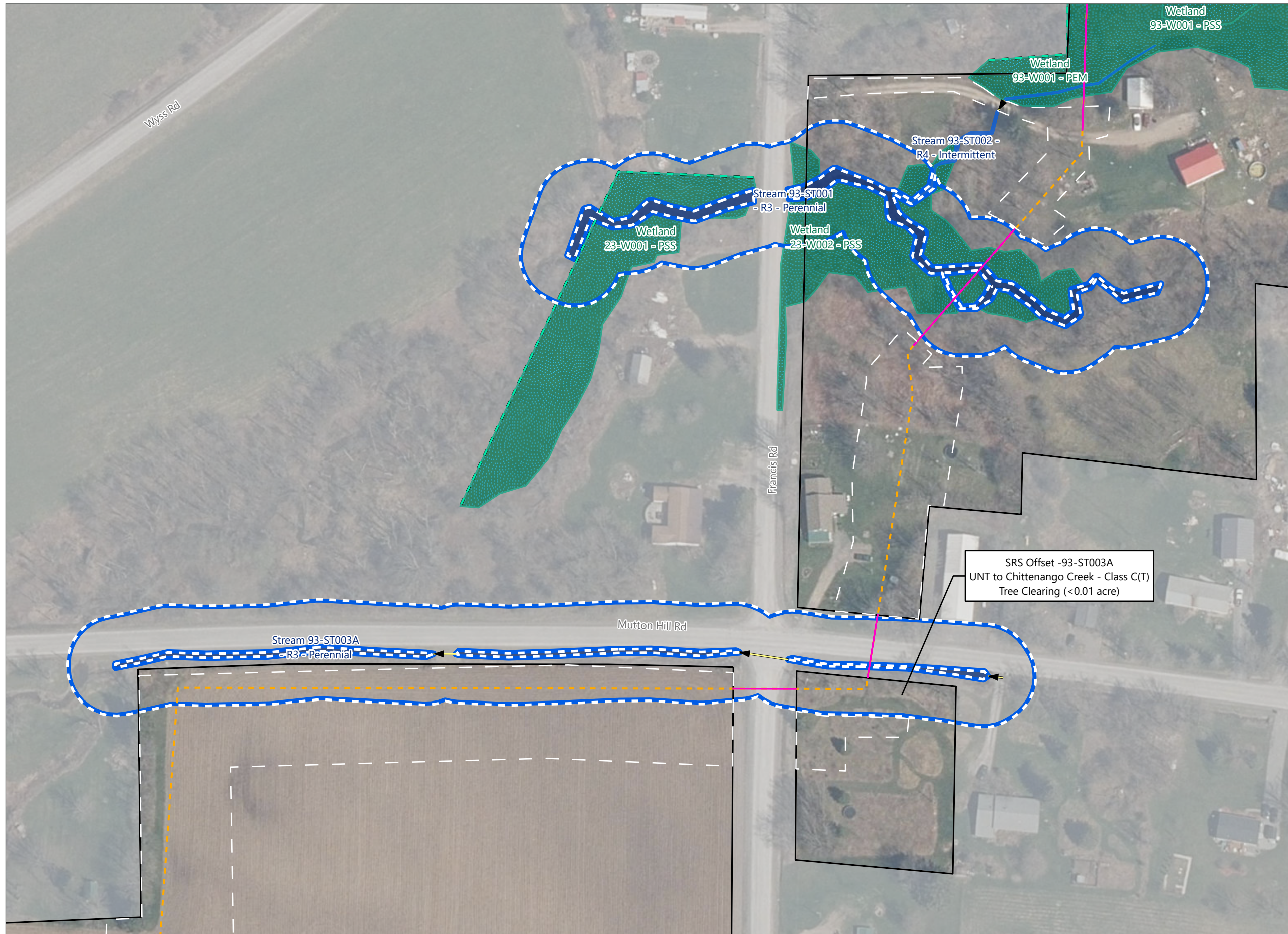
Sheet 1 of 7



Prepared February 12, 2024  
Basemap: USDA NAIP "2022 New York 60cm" orthoimagery map service



Figure 13-3. Impacts to State-Regulated Streams

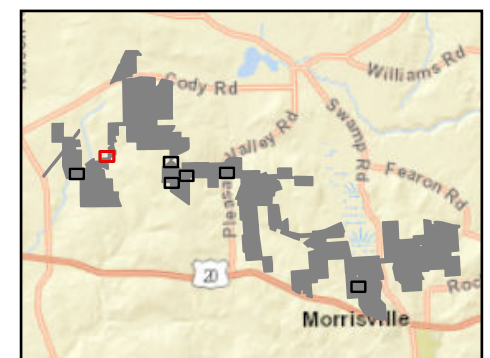


### Hoffman Falls Wind

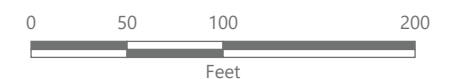
Towns of Eaton, Fenner, Nelson and Smithfield, Madison County, New York

**94-c Permit Application  
Matter No. 23-00038**

- Wetlands and Streams**
- ▶ Culvert
  - Wetland Continues
  - Delineated Stream w/ Federal Jurisdiction
  - Delineated Stream w/ State & Federal Jurisdiction
  - State-Regulated Stream (SRS) 50-foot Offset
  - Delineated Wetland w/ State & Federal Jurisdiction
- State-Regulated Stream 50-foot Offset Area Impact**
- Tree Clearing
- Facility Components**
- Collection Line
  - Collection Line Bore
  - Limit of Disturbance
  - Facility Site

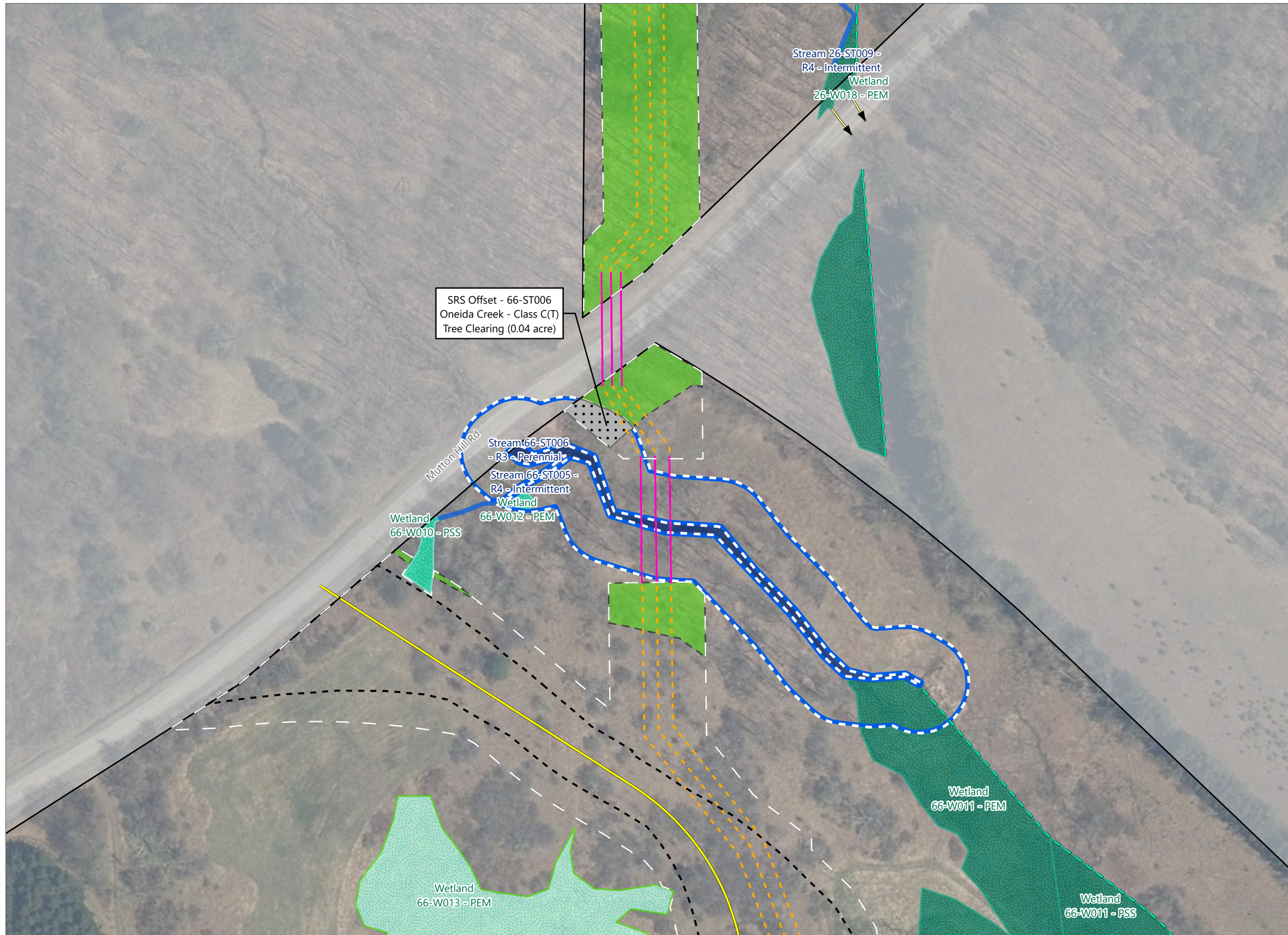


Sheet 2 of 7



Prepared February 12, 2024  
Basemap: USDA NAIP "2022 New York 60cm" orthoimagery map service



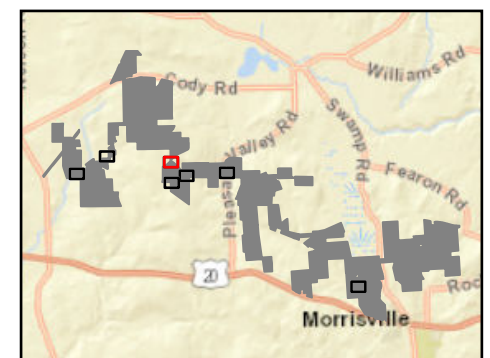


### Hoffman Falls Wind

Towns of Eaton, Fenner, Nelson and Smithfield, Madison County, New York

**94-c Permit Application  
Matter No. 23-00038**

- Wetlands and Streams**
- Culvert
  - Wetland Continues
  - Delineated Stream w/ Federal Jurisdiction
  - Delineated Stream w/ State & Federal Jurisdiction
  - State-Regulated Stream (SRS) 50-foot Offset
  - Delineated Wetland Non-jurisdictional
  - Delineated Wetland w/ Federal Jurisdiction
  - Delineated Wetland w/ State & Federal Jurisdiction
- State-Regulated Stream 50-foot Offset Area Impact**
- Tree Clearing
- Facility Components**
- Access Road
  - Collection Line
  - Collection Line Bore
- Wetlands and Streams**
- Limit of Clearing
- Facility Components**
- Limit of Grading
  - Limit of Disturbance
  - Facility Site



Sheet 3 of 7



Prepared February 12, 2024  
Basemap: USDA NAIP "2022 New York 60cm" orthoimagery map service

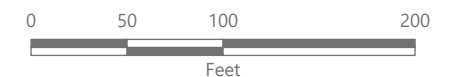
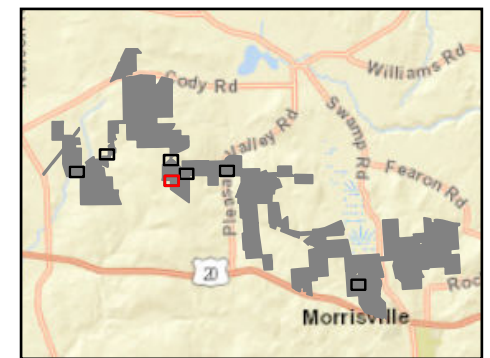
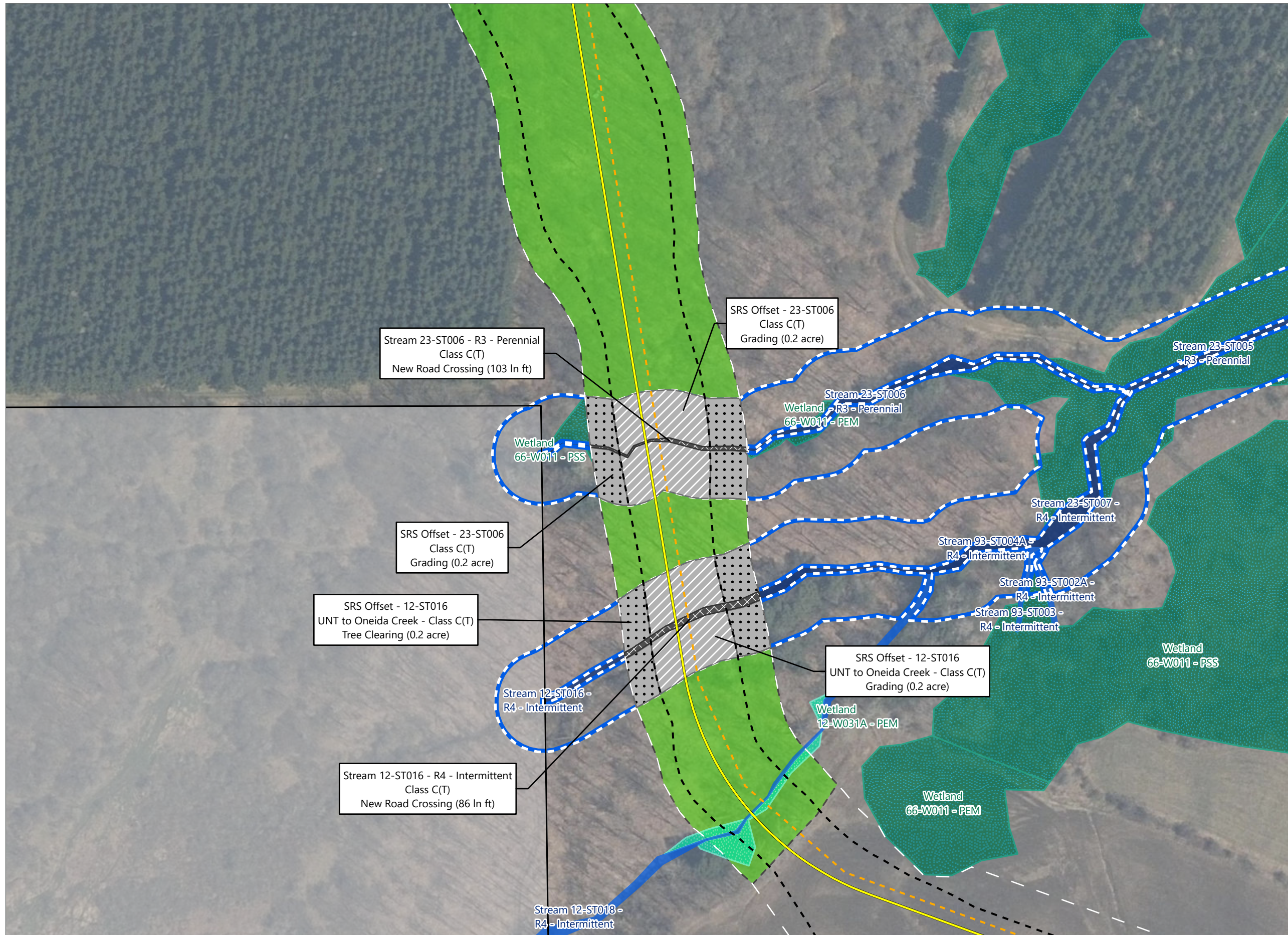


### Hoffman Falls Wind

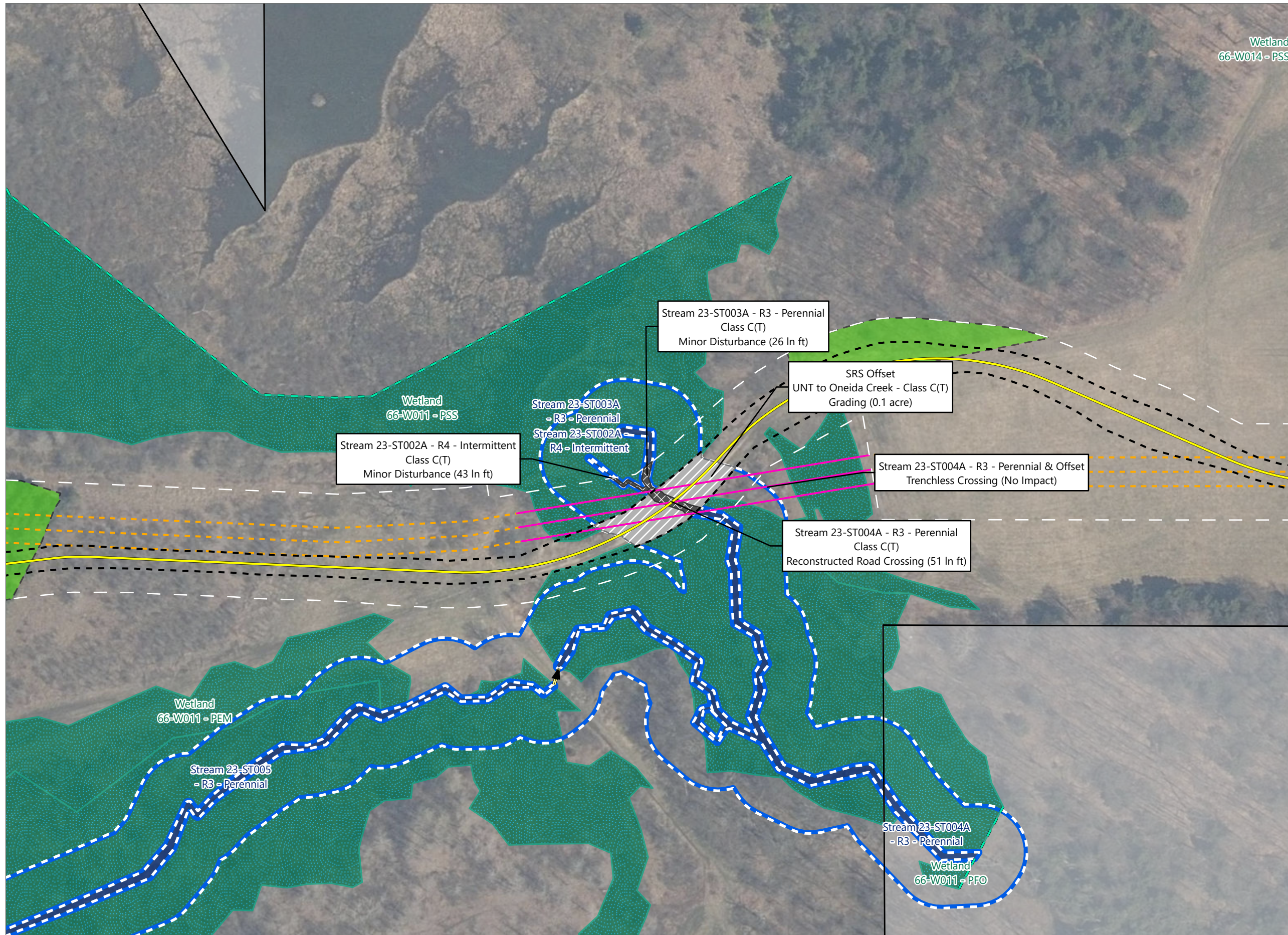
Towns of Eaton, Fenner, Nelson and Smithfield, Madison County, New York

**94-c Permit Application  
Matter No. 23-00038**

- Wetlands and Streams**
- Delineated Stream w/ Federal Jurisdiction
  - Delineated Stream w/ State & Federal Jurisdiction
  - State-Regulated Stream (SRS) 50-foot Offset
  - Delineated Wetland w/ Federal Jurisdiction
  - Delineated Wetland w/ State & Federal Jurisdiction
- State-Regulated Stream Impact**
- State-Regulated Stream Impact
- State-Regulated Stream 50-foot Offset Area Impact**
- Grading
  - Tree Clearing
- Facility Components**
- Access Road
  - Collection Line
- Wetlands and Streams**
- Limit of Clearing
- Facility Components**
- Limit of Grading
  - Limit of Disturbance
  - Facility Site





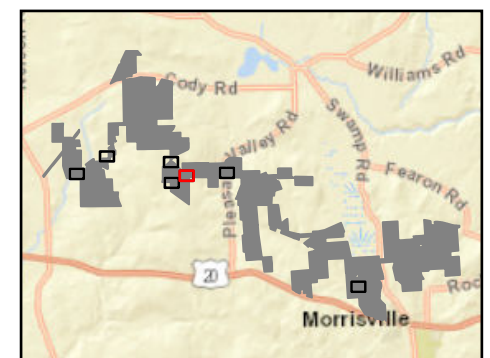


### Hoffman Falls Wind

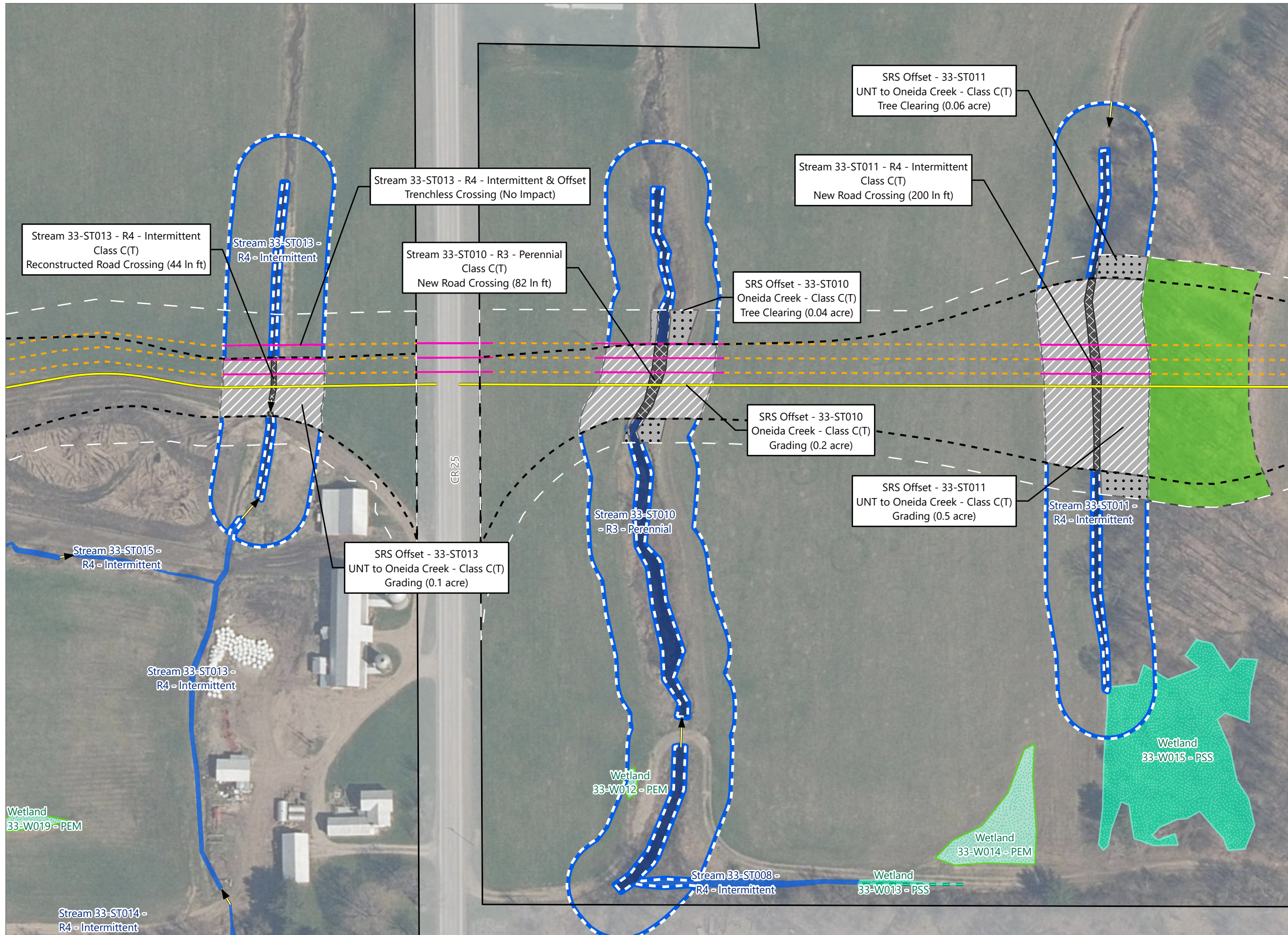
Towns of Eaton, Fenner, Nelson and Smithfield, Madison County, New York

**94-c Permit Application**  
**Matter No. 23-00038**

- Wetlands and Streams**
- ▶ Culvert
  - Wetland Continues
  - Delineated Stream w/ State & Federal Jurisdiction
  - ▬ State-Regulated Stream (SRS) 50-foot Offset
  - Delineated Wetland w/ Federal Jurisdiction
  - Delineated Wetland w/ State & Federal Jurisdiction
- State-Regulated Stream Impact**
- ▨ State-Regulated Stream Impact
  - ▨ State-Regulated Stream 50-foot Offset Area Impact
- Facility Components**
- Access Road
  - Collection Line
  - Collection Line Bore
- Wetlands and Streams**
- Limit of Clearing
- Facility Components**
- ▨ Limit of Grading
  - ▨ Limit of Disturbance
  - ▭ Facility Site





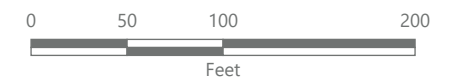
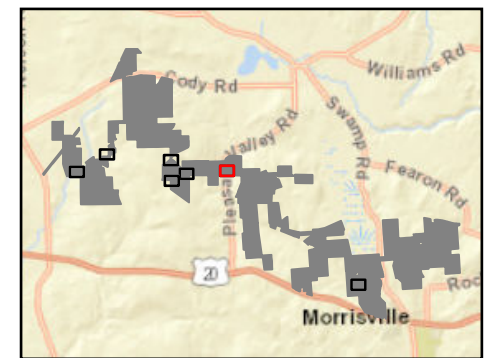


### Hoffman Falls Wind

Towns of Eaton, Fenner, Nelson and Smithfield, Madison County, New York

**94-c Permit Application**  
**Matter No. 23-00038**

- Wetlands and Streams**
- Culvert
  - Wetland Continues
  - Delineated Stream w/ Federal Jurisdiction
  - Delineated Stream w/ State & Federal Jurisdiction
  - State-Regulated Stream (SRS) 50-foot Offset
  - Delineated Wetland Non-jurisdictional
  - Delineated Wetland w/ Federal Jurisdiction
- State-Regulated Stream Impact**
- State-Regulated Stream Impact
  - State-Regulated Stream 50-foot Offset Area Impact
- Facility Components**
- Grading
  - Tree Clearing
  - Access Road
  - Collection Line
  - Collection Line Bore
- Wetlands and Streams**
- Limit of Clearing
- Facility Components**
- Limit of Grading
  - Limit of Disturbance
  - Facility Site





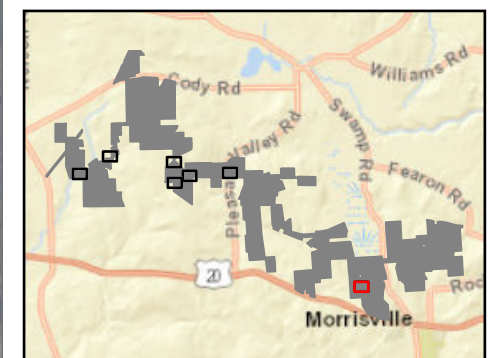


### Hoffman Falls Wind

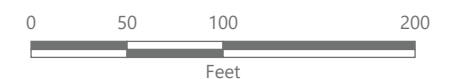
Towns of Eaton, Fenner, Nelson and Smithfield, Madison County, New York

**94-c Permit Application  
Matter No. 23-00038**

- Wetlands and Streams
- Wetland Continues
- Delineated Stream w/ State & Federal Jurisdiction
- State-Regulated Stream (SRS) 50-foot Offset
- Delineated Wetland w/ State & Federal Jurisdiction
- State-Regulated Stream Impact
- State-Regulated Stream Impact
- State-Regulated Stream 50-foot Offset Area Impact
- Grading
- Facility Components
- Access Road
- Wetlands and Streams
- Limit of Clearing
- Facility Components
- Limit of Grading
- Limit of Disturbance
- Facility Site



Sheet 7 of 7



Prepared February 12, 2024  
Basemap: USDA NAIP "2022 New York 60cm" orthoimagery map service