



Note: The image above is a panorama photograph taken from Gill Road in the Town of Smithfield panning clockwise from south (left) to northwest (right). The green rectangle represents the extent of the simulated photograph.

VIEWPOINT 18

Gill Road

VIEWPOINT INFORMATION

Location: Gill Road
Town: Smithfield
County: Madison
Latitude: 42.94291° N
Longitude: 75.66677° W

LOCATION INFORMATION

Distance Zone Represented in View: Middle ground
Viewer Distance*: 1.0 mile
Landscape Similarity Zone: Agricultural/Rural Residential
Viewer/User Group(s): Local Residents
Visually Sensitive Resource(s): Erie Canalway National Heritage Corridor

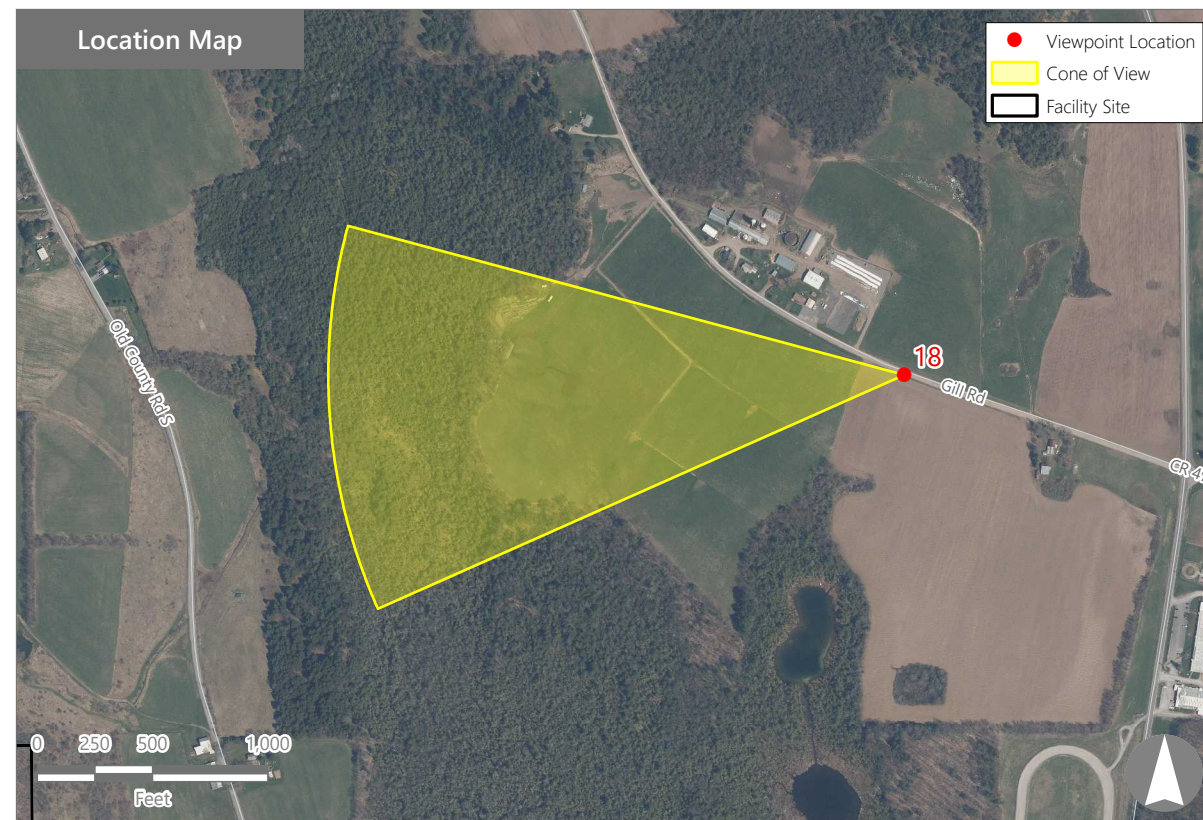
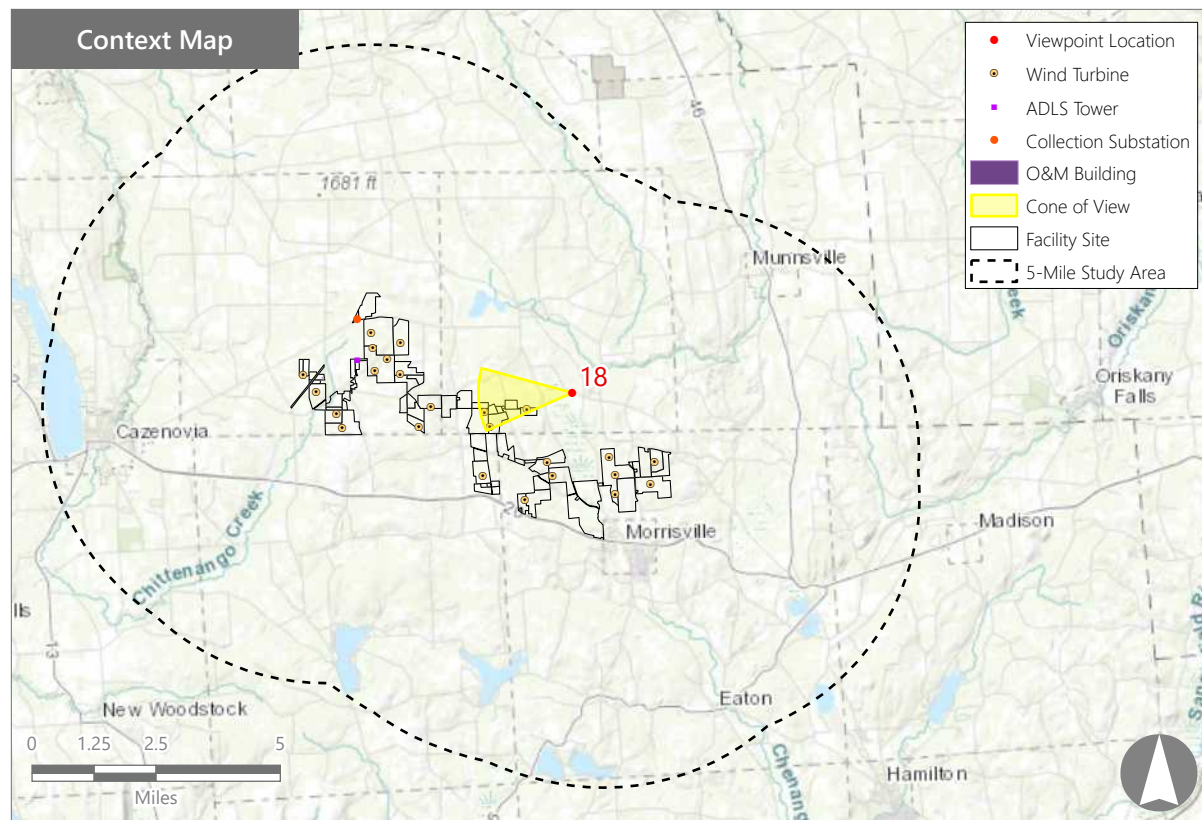
PHOTOGRAPH INFORMATION

Date: August 31, 2023
Time: 10:43 AM
Camera: Canon EOS 5D Mark IV
Resolution: 24 Megapixels
Lens Focal Length (35mm equivalent): 50 mm
Camera Elevation: 1,306 feet
Field of View: 39 degrees
Direction of View: West
Printed Size: 10" x 15"
Viewing Distance:** 21"

NOTES

*Distance as measured from the viewpoint to the closest wind turbine generator within the simulated photograph's field of view

**The simulation is at the correct perspective when printed on an 11 inch by 17 inch sheet at full scale, and viewed approximately 21 inches from the eye of the viewer.



Hoffman Falls Wind Project

Towns of Eaton, Fenner, Nelson, and Smithfield, Madison County, New York

Visual Impact Assessment
 Appendix 8-A

Viewpoint Sensitivity¹:

Scenic Quality:

- Low
- Moderate
- High

Viewer Exposure

Frequency:

- Rare
- Occasional
- Regular/Repeated

Duration of View:

- Short/Brief/Fleeting
- Moderate
- Long

¹Viewpoint Sensitivity information is gathered from rating panel results. Scenic Quality is an average based on Low = 1, Moderate = 2, High = 3. Viewer Exposure reflects all those selected by the review panel.

Contrast Rating Scores²:

Component	Score		Contrast Rating
	Install		
Landform	2.5		Moderate/Appreciable
Vegetation	2.3		Moderate/Appreciable
Land Use	2.0		Moderate
Water	N/A		N/A
Sky	2.8		Appreciable
Viewer Activity	2.2		Moderate
AVERAGE	2.4		Moderate/Appreciable

² Contrast Rating Scale: 0.0 - 0.2 (Insignificant), 0.3 - 0.7 (Insignificant/Minimal), 0.8 - 1.2 (Minimal), 1.3 - 1.7 (Minimal/Moderate), 1.8 - 2.2 (Moderate), 2.3 - 2.7 (Moderate/Appreciable), 2.8 - 3.2 (Appreciable) 3.3 - 3.7 (Appreciable/Strong), 3.8 - 4.0 (Strong).

Contrast Rating - Lowest and Highest Scores:

Component	Post - Install	
	Score	
	Low	High
Landform	1.5	3.0
Vegetation	1.0	3.0
Land Use	1.5	3.0
Water	NA	NA
Sky	2.0	3.5
Viewer Activity	1.5	2.5

Existing View



Proposed View (Post Installation)



Existing View

Viewpoint 18 is located on Gill Road in the Town of Smithfield, approximately 1.0 mile from the nearest proposed wind turbine that would be visible in the selected photo's field of view. This viewpoint occurs in a portion of the Agricultural/Rural Residential LSZ with relatively level topography and a mix of farms, fields, and woodlots. Typical viewers in this location are local residents. In the selected photo, the existing view to the west features a roadside cornfield that extends from the foreground into the middle ground. The field is backed by a horizontal band of trees that represent the edge of a woodlot. The woodlot descends into a valley, and partially screens a mix of fields and forest on undulating hills that extend to the horizon line in the background. Above the rolling horizon line, the uninterrupted sky is clear and light blue in color. The abundance of trees and rolling hills screen any built features, and the view has a strong rural agricultural character and high scenic quality.

Proposed View

With the proposed Project in place, several wind turbines are now visible along the horizon line. The turbines extend well into the sky and their scale contrast with the existing vegetation and landform is notable. Because they are closer to the viewer, the turbines on the left appear larger and their details are more clearly visible. However, their white color and the late morning sun angle minimizes color contrast with the light blue sky. The turbines are prominent new built features in a predominantly undeveloped landscape. Although they present moderate to appreciable line, form, and scale contrast, the distance of the turbines from the viewer limits the effect of the Project on the scenic quality of this working agricultural landscape.

Hoffman Falls Wind Project

Towns of Eaton, Fenner, Nelson, and Smithfield, Madison County, New York

EXISTING VIEW



VIEWPOINT 18

Gill Road

0 1 in 2 in

This scale is designed to insure the simulation images are printed at the intended size.

Hoffman Falls Wind Project

Towns of Eaton, Fenner, Nelson, and Smithfield, Madison County, New York

EDR

Note: Printed at actual size, the existing view image is 15 inches wide by 10 inches high. At this size and focal length, the existing view image should be viewed from a distance 21 inches from the eye of the viewer.