

# Wind Power GeoPlanner™

## Land Mobile & Emergency Services Report

Hoffman Falls



Prepared on Behalf of  
Liberty Renewables Inc.

September 21, 2023





## **Table of Contents**

<b>1. Introduction</b>	<b>- 1 -</b>
<b>2. Summary of Results</b>	<b>- 2 -</b>
<b>3. Impact Assessment</b>	<b>- 7 -</b>
<b>4. Recommendations</b>	<b>- 7 -</b>
<b>5. Contact</b>	<b>- 7 -</b>
<b>6. Appendix</b>	<b>- 9 -</b>

# 1. Introduction

An assessment of emergency services was performed by Comsearch to identify potential impact from turbines associated with the proposed Hoffman Falls Wind Project located within Madison County, New York (the Project Area or the Facility). We evaluated the registered frequencies for the following types of first responder entities: police, fire, emergency medical services, emergency management, hospitals, public works, transportation and other state, county, and municipal agencies. We also identified all industrial and business land mobile radio (LMR) systems and commercial E911 operators within the boundaries of the proposed wind energy Facility. This information is useful in the planning stages of the Facility because the data can be used in support of facility communications needs and to evaluate any potential impact on the emergency services provided in that region. An overview of the Project Area is shown below in Figure 1. The Project Area is defined as the rectangular area with a minimum of a 2-mile buffer from all turbine locations as noted in Figures 1 and 2.



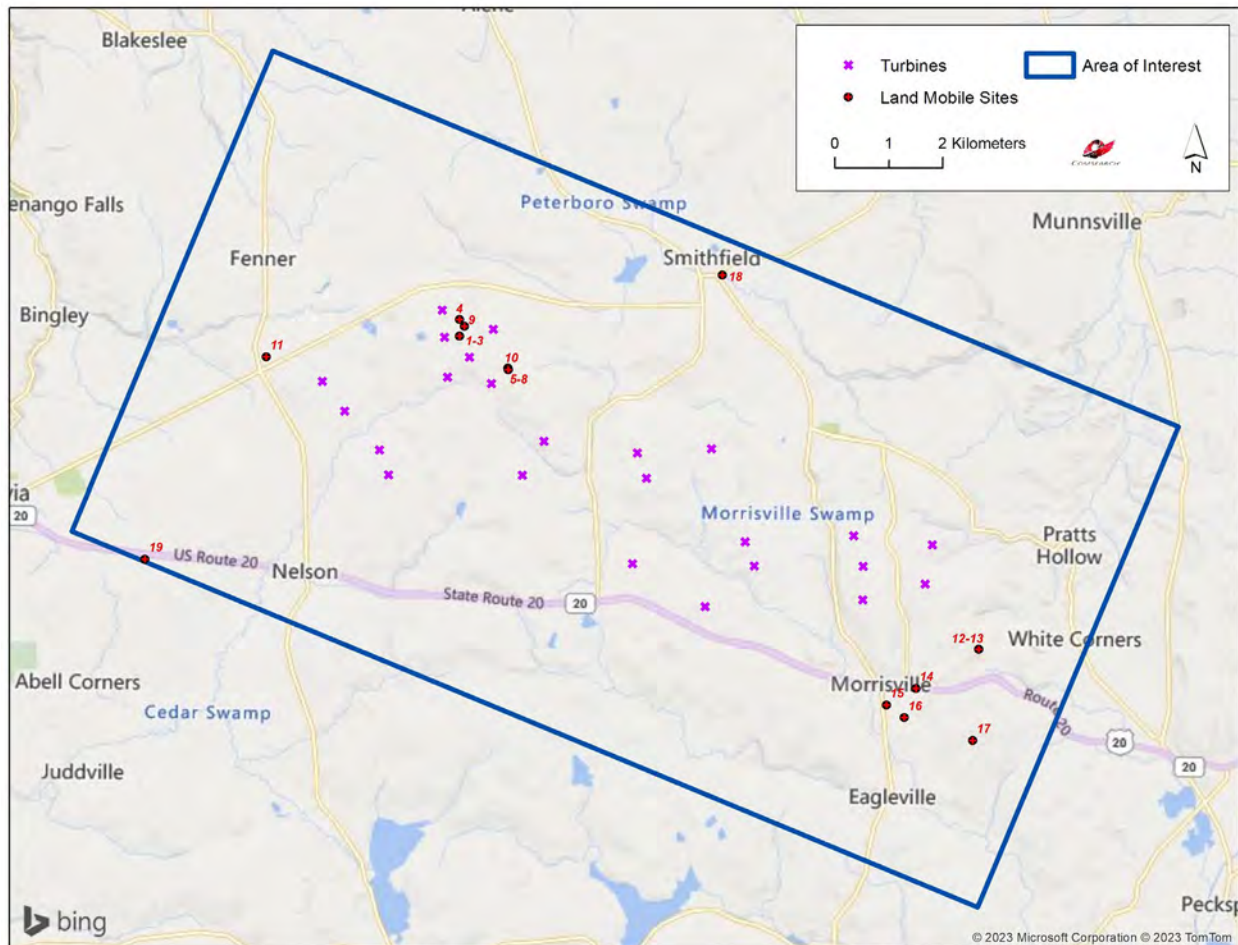
**Figure 1: Area of Interest (AOI)**

## 2. Summary of Results

Our land mobile and emergency services incumbent data<sup>1</sup> was derived from the Federal Communications Commission’s (FCC’s) Universal Licensing System (ULS) and the FCC’s Public Safety & Homeland Security bureau. We identified both site-based licenses as well as regional area-wide licenses designated for public safety use.

### Site-Based Licenses

The site-based licenses were imported into Geographic Information System (GIS) software and geographically mapped relative Project Area. Each site on the map was assigned an ID number and paired with site information (see Table 1 below). A depiction of the fixed-site licenses in the Project Area appears in Figure 2.



**Figure 2: Land Mobile & Emergency Service Sites in Area of Interest**

<sup>1</sup> Comsearch makes no warranty as to the accuracy of the data included in this report beyond the date of the report. The data presented in this report is derived from the land mobile station’s FCC license and governed by Comsearch’s data license notification and agreement located at [http://www.comsearch.com/files/data\\_license.pdf](http://www.comsearch.com/files/data_license.pdf)



ID	Call Sign	Frequency Band (MHz)	Licensee	Antenna Height AGL (m)	Latitude (NAD83)	Longitude (NAD83)	Distance to Nearest Turbine (km)
1	KA59023	150-174	MADISON, COUNTY OF	35.0	42.956722	-75.742417	0.28
2	WPAF751	450-470	MADISON COUNTY 911	52.0	42.956722	-75.742417	0.28
3	WPUQ258	450-470	MADISON, COUNTY OF	51.8	42.956722	-75.742417	0.28
4	WQOL738	25-50	County of Madison	21.0	42.959500	-75.742417	0.37
5	WQLT878	450-470	County of Madison	49.0	42.951139	-75.731250	0.40
6	WQLT879	450-470	County of Madison	49.0	42.951139	-75.731250	0.40
7	WQPV647	150-174	County of Madison	18.0	42.951139	-75.731250	0.40
8	WQYK289	450-470	BOARD OF COOPERATIVE EDUCATIONAL SERVICES MADISON & ONEIDA COUNTIES DISTRICT	24.0	42.951139	-75.731250	0.40
9	KLG391	25-50	NEW YORK, STATE OF D O T	20.0	42.958389	-75.741306	0.42
10	KBU289	25-50, 150-174	MADISON, COUNTY OF	58.0	42.951444	-75.731306	0.42
11	WPAX644	150-174	FENNER, TOWN OF	8.9	42.952972	-75.786361	1.14
12	WQLT878	450-470	County of Madison	43.0	42.905000	-75.623750	1.57
13	WQLT879	450-470	County of Madison	43.0	42.905000	-75.623750	1.57
14	KVN581	150-174	STATE OF NEW YORK DIVISION OF STATE POLICE	8.0	42.898389	-75.637972	1.92
15	WRUK867	450-470	MORRISVILLE EATON CENTRAL SCHOOL	10.7	42.895556	-75.644639	2.01
16	WQAU758	150-174	SUNY Morrisville	30.8	42.893472	-75.640556	2.32
17	WNRZ302	450-470	EATON, TOWN OF	13.1	42.889750	-75.624917	3.04
18	WQAB574	450-470	SMITHFIELD, TOWN OF	7.0	42.967306	-75.682750	3.24
19	KNCW938	150-174	CAZENOVIA, VILLAGE OF	12.0	42.918944	-75.813528	4.61

**Table 1: Land Mobile & Emergency Service Sites in Area of Interest**

## Mobile Licenses

In addition to the fixed-site licenses above, 401 mobile licenses defined by center point and radius were found to intersect the Project Area. Appendix A contains a tabular summary of these stations.

## Area-Wide Licenses

The regional area-wide licenses were compiled from FCC data sources and identified for each county intersected by the Project Area. The Facility is located in Madison County, New York, part of Public Safety Region #30, which contains all the counties in the New York-Albany area. The regional public safety operations are overseen by the entity listed below.

### **Glen P. Gosnell, ENP - Chairman**

*Director / Emergency Manager*

Washington County Department of Public Safety

Address: 383 Broadway - Building B, Fort Edward, NY 12828

Phone: 518-747-7520

Mobile: 518-796-1400

Email: [ggosnell@washingtoncountyny.gov](mailto:ggosnell@washingtoncountyny.gov)

The chairperson for Region #30 serves as the representative for all public safety entities in the area and is responsible for coordinating current and future public safety use in the wireless spectrum. In the bands licensed by the FCC for area-wide first responders, which include 220 MHz, 700 MHz, 800 MHz and 4.9 GHz, as well as the traditional Part 90 public safety pool of frequencies, twenty-seven licenses were found for the State of New York and seven for the County of Madison (see Table 2). These area-wide licenses are designated for mobile use only.

ID	Licensee	Area of Operation	Frequency Band (MHz)
1	AMERICAN NATIONAL RED CROSS	Statewide: NY	25-50, 450-470
2	CENTRAL ISLIP HAUPPAUGE VOLUNTEER AMBULANCE INC	Statewide: NY	150-174
3	CHITTENANGO, VILLAGE OF	Countywide: MADISON, NY	150-174
4	CITY OF NEW YORK	Statewide: NY	4940-4990
5	County of Madison	Countywide: MADISON, NY	25-50, 150-174, 450-470
6	ERIE, COUNTY OF	Statewide: NY	450-470
7	GREATER LENOX AMB SERVICE DBA GREATER LENOX AMB SERVICE	Countywide: MADISON, NY	150-174, 450-470
8	MADISON, COUNTY OF	Countywide: MADISON, NY	150-174



ID	Licensee	Area of Operation	Frequency Band (MHz)
9	MASSAUGA SEARCH AND RESCUE INC	Statewide: NY	150-174
10	NATIONAL SKI PATROL SYSTEM INC	Countywide: MADISON, NY	150-174
11	NATIONAL SKI PATROL SYSTEM INC	Statewide: NY	150-174
12	NEW YORK CITY POLICE DEPARTMENT	Statewide: NY	150-174
13	NEW YORK STATE DEPARTMENT OF CORRECTIONS AND COMMUNITY SUPERVISION	Statewide: NY	150-174, 450-470, 4940-4990
14	New York State Department of Environmental Conservation	Statewide: NY	450-470
15	New York State Department of Labor	Statewide: NY	150-174
16	New York State Department of Transportation	Statewide: NY	0-10, 4940-4990
17	New York State Dept of Environmental Conservation	Statewide: NY	25-50, 150-174
18	New York State Office of Parks, Recreation & Historic Preservation (OPRHP) - Long Island Region	Statewide: NY	150-174
19	New York State Office of Parks, Recreation and Historic Preservation	Statewide: NY	450-470
20	New York State Office of Parks, Recreation and Historic Preservation (OPRHP) - Niagara Region	Statewide: NY	150-174
21	New York State Office of Parks, Recreation, and Historic Preservation (OPRHP) - Albany	Statewide: NY	150-174
22	NEW YORK, STATE OF	Countywide: MADISON, NY	150-174
23	New York, State of	Statewide: NY	0-10, 25-50, 150-174, 406-413, 4940-4990
24	NEW YORK, STATE OF, DIVISION OF STATE POLICE	Statewide: NY	150-174, 450-470, 2450-2500
25	NIAGARA FRONTIER SEARCH AND RESCUE	Statewide: NY	150-174
26	NORTHEAST MOBILE SEARCH AND RESCUE INC	Statewide: NY	150-174
27	NORTHEASTERN FOREST FIRE PROTECTION COMPACT	Statewide: NY	25-50
28	NYS DEPARTMENT OF HEALTH BUREAU OF EMS	Statewide: NY	25-50, 150-174, 450-470
29	ONEIDA, CITY OF	Countywide: MADISON, NY	25-50
30	ORLEANS, COUNTY OF	Statewide: NY	150-174, 450-470
31	OSSINING, VILLAGE OF	Statewide: NY	25-50

ID	Licensee	Area of Operation	Frequency Band (MHz)
32	STATE OF NEW YORK DIVISION OF STATE POLICE	Statewide: NY	150-174, 800/900, 4940-4990
33	Triborough Bridge and Tunnel Authority	Statewide: NY	4940-4990
34	WESTERN NEW YORK SEARCH DOGS INC	Statewide: NY	150-174

**Table 2: Regional Licenses**

### E911 Operators

Wireless operators are granted area-wide licenses from the FCC to deploy their cellular networks, which often include handsets with E911 capabilities. Since mobile phone market boundaries differ from service to service, we disaggregated the carriers' licensed areas down to the county level. We have identified the type of service for each carrier in Madison County, New York, in Table 3.

Mobile Phone Carrier	Service <sup>2</sup>
AT&T	700 MHz, AWS, Cellular, PCS, WCS
DISH Network	700 MHz, AWS
T-Mobile	700 MHz, AWS, PCS
Verizon	700 MHz, AWS, Cellular, PCS

**Table 3: Mobile Phone Carriers in Area of Interest with E911 Service**

## 3. Impact Assessment

The first responder, industrial/business land mobile sites, area-wide public safety, and commercial E-911 communications as described in this report are typically unaffected by the presence of wind turbines, and we do not anticipate any significant harmful effect to these services in the Project Area. Although each of these services operates in different frequency ranges and provides different types of service including voice, video and data applications, there is commonality among these different networks with regard to the impact of wind turbines on

<sup>2</sup> AWS: Advanced Wireless Service at 1.7/2.1 GHz  
 CELL: Cellular Service at 800 MHz  
 PCS: Personal Communication Service at 1.9 GHz  
 WCS: Wireless Communications Service at 2.3 GHz  
 700 MHz: Lower 700 MHz Service



their service. Each of these networks is designed to operate reliably in a non-line-of-sight (NLOS) environment. Many land mobile systems are designed with multiple base transmitter stations covering a large geographic area with overlap between adjacent transmitter sites in order to provide handoff between cells. Therefore, any signal blockage caused by the wind turbines does not materially degrade the reception because the end user is likely receiving signals from multiple transmitter locations. Additionally, the frequencies of operation for these services have characteristics that allow the signal to propagate through wind turbines. As a result, very little, if any, change in their coverage should occur when the wind turbines are installed.

When planning the wind energy turbine locations in the area of interest, a conservative approach would dictate not locating any turbines within 77.5 meters of land mobile fixed-base stations to avoid any possible impact to the communications services provided by these stations. This distance is based on FCC interference emissions from electrical devices in the land mobile frequency bands. As long as the turbines are located more than 77.5 meters from the land mobile stations, they will meet the setback distance criteria for FCC interference emissions in the land mobile bands. None of the turbines are sited within the setback radius of the site-based licenses in Table 1.

## 4. Recommendations

In the event that a public safety entity believes its coverage has been compromised by the presence of the Facility, it has many options to improve its signal coverage to the area through optimization of a nearby base station or even adding a repeater site.

## 5. Contact

For questions or information regarding the Land Mobile & Emergency Services Report, please contact:

Contact person:	David Meyer
Title:	Senior Manager
Company:	Comsearch
Address:	21515 Ridgetop Circle, Suite 300, Sterling, VA 20166
Telephone:	703-726-5656
Fax:	703-726-5595
Email:	<a href="mailto:David.Meyer@CommScope.com">David.Meyer@CommScope.com</a>
Web site:	<a href="http://www.comsearch.com">www.comsearch.com</a>

## Appendix A

ID	Call Sign	Frequency Band (MHz)	Licensee	Mobile Area Radius (km)	Latitude (NAD83)	Longitude (NAD83)
1	WQWM575	150-174	A.J.TRUCKING	40.0	43.085833	-75.646111
2	WQOD961	450-470	ABUNDANT LIFE CHRISTIAN FELLOWSHIP	32.0	43.108389	-76.059917
3	WQFK911	450-470	Aclara Technologies LLC	80.0	42.601056	-76.180417
4	WNHT293	450-470	Adams Ada, David M	80.0	43.443389	-76.530222
5	WNHT293	450-470	Adams Ada, David M	80.0	42.966722	-76.201306
6	WNMX489	450-470	ADAMS, DAVID M	121.0	42.966722	-76.201028
7	WNMX489	450-470	ADAMS, DAVID M	121.0	42.666167	-76.143056
8	WNMX489	450-470	ADAMS, DAVID M	121.0	43.008944	-75.914083
9	WNMX489	450-470	ADAMS, DAVID M	121.0	43.966722	-75.802972
10	WPPH613	450-470	ADAMS, DAVID M	32.0	42.966722	-76.201028
11	WQAY556	450-470	ADAMS, DAVID M	32.0	43.012333	-76.084972
12	WQPL476	450-470	ADAMS, DAVID M	32.0	42.969444	-76.196944
13	WNM1838	800/900	ADAPTABLE COMMERCIAL PROPERTIES, INC	113.0	43.142861	-75.176000
14	WRJF451	450-470	AERO SNOW REMOVAL (SYR) LLC	32.0	43.116778	-76.117583
15	WROZ954	450-470	AEROMAG 2000	32.0	43.111306	-76.105833
16	WNUV409	450-470	AJM MANAGEMENT SERVICES INC	48.0	42.946444	-76.025194
17	WNPY607	450-470	American Airlines Group, Inc.	32.0	43.113056	-76.109333
18	KA44388	150-174	American Medical Response, Inc.	48.0	43.040889	-76.158528
19	KED679	150-174	American Medical Response, Inc.	40.0	43.049611	-76.167667
20	KED679	150-174	American Medical Response, Inc.	40.0	42.955333	-76.109083
21	WQAP755	150-174	American Medical Response, Inc.	80.0	42.934722	-74.613472
22	WQCN649	450-470	American National Red Cross	32.0	43.149722	-76.074444
23	WQPZ336	150-174	ANACKER, SUSAN M	50.0	43.173472	-75.155833
24	WRO613	150-174	ANY TAXI	80.0	42.930333	-76.569667



ID	Call Sign	Frequency Band (MHz)	Licensee	Mobile Area Radius (km)	Latitude (NAD83)	Longitude (NAD83)
25	KNRP775	800/900	ASHCROFT ITV INC	113.0	42.450083	-76.583000
26	KNJM590	450-470	ATS Holdings, LLC	121.0	42.798944	-76.435778
27	WNMP752	450-470	ATS Holdings, LLC	121.0	42.546472	-77.048861
28	WNNQ640	450-470	ATS Holdings, LLC	121.0	43.237000	-77.079694
29	WNNV609	450-470	ATS Holdings, LLC	121.0	42.798944	-76.435778
30	WPHE747	450-470	ATS Holdings, LLC	121.0	43.065333	-76.999139
31	WPHP556	450-470	ATS Holdings, LLC	121.0	42.546472	-77.048861
32	WQLY594	150-174	AUGUSTA, TOWN OF, HIGHWAY DEPT	10.0	42.979556	-75.506417
33	WQQQ743	450-470	Baillie Lumber Company LP	32.0	42.685250	-75.566333
34	WQTT988	450-470	BARBLAND DAIRY LLC	32.0	42.837083	-75.947778
35	WPCE571	25-50	BLUEOX CORPORATION	80.0	42.845611	-75.557389
36	WNNJ301	450-470	BOARD OF COOPERATIVE EDUCATIONAL SERVICES	48.0	42.672556	-75.785750
37	WNNJ301	450-470	BOARD OF COOPERATIVE EDUCATIONAL SERVICES	48.0	42.511389	-75.468889
38	WNNJ301	450-470	BOARD OF COOPERATIVE EDUCATIONAL SERVICES	48.0	42.631750	-75.443500
39	WPKA271	450-470	BOARD OF COOPERATIVE EDUCATIONAL SERVICES	32.0	42.675639	-75.533222
40	WQYJ940	450-470	BOARD OF COOPERATIVE EDUCATIONAL SERVICES MADISON & ONEIDA COUNTIES DISTRICT	48.0	42.921306	-75.000722
41	WQYK289	450-470	BOARD OF COOPERATIVE EDUCATIONAL SERVICES MADISON & ONEIDA COUNTIES DISTRICT	48.0	43.310472	-75.756111
42	WQYK289	450-470	BOARD OF COOPERATIVE EDUCATIONAL SERVICES MADISON & ONEIDA COUNTIES DISTRICT	48.0	42.951139	-75.731250
43	WQYK289	450-470	BOARD OF COOPERATIVE EDUCATIONAL SERVICES MADISON & ONEIDA COUNTIES DISTRICT	48.0	43.042528	-75.654667
44	WQYK289	450-470	BOARD OF COOPERATIVE EDUCATIONAL SERVICES MADISON & ONEIDA COUNTIES DISTRICT	48.0	43.142778	-75.175833



ID	Call Sign	Frequency Band (MHz)	Licensee	Mobile Area Radius (km)	Latitude (NAD83)	Longitude (NAD83)
45	WQGG675	450-470	BRIDGEPORT FIRE DISTRICT	24.0	43.156111	-75.963889
46	KD28577	450-470	BRINK'S INCORPORATED	121.0	43.051167	-76.153528
47	KD28651	450-470	BRINK'S INCORPORATED	121.0	42.100917	-75.912694
48	KWV708	150-174	BRINK'S INCORPORATED	40.0	42.946722	-76.117417
49	WNMV818	450-470	BUSH ELECTRONICS INC	32.0	42.944944	-76.118389
50	WNMV818	450-470	BUSH ELECTRONICS INC	32.0	42.945000	-76.024167
51	WPMI285	450-470	BUSH ELECTRONICS INC	32.0	42.944944	-76.118389
52	WPPD277	450-470	BUSH ELECTRONICS INC	32.0	42.945056	-76.024083
53	WPVZ433	450-470	BUSH, MICHAEL W	32.0	42.944944	-76.118389
54	WQPD645	450-470	CALLANAN INDUSTRIES	4.0	43.024861	-75.728472
55	WNMY289	450-470	CAMDEN CENTRAL SCHOOL	48.0	43.308667	-75.766306
56	KCX477	150-174	CARRIER CORP	121.0	43.099500	-76.137139
57	WRAL917	450-470	Cazenovia Central School District	32.0	42.934167	-75.857750
58	WRAL917	450-470	Cazenovia Central School District	32.0	42.934222	-75.845889
59	WRAL917	450-470	Cazenovia Central School District	32.0	42.917694	-75.812694
60	WQSD806	450-470	CAZENOVIA COLLEGE	32.0	42.932583	-75.853528
61	WPYM206	450-470	Cazenovia Country Club	5.0	42.899167	-75.837250
62	KNCW938	150-174	CAZENOVIA, VILLAGE OF	48.0	42.918944	-75.813528
63	WQEM507	150-174	C-COM OF CENTRAL NEW YORK	40.0	42.966667	-76.200833
64	WQEM507	450-470	C-COM OF CENTRAL NEW YORK	32.0	43.003333	-76.124167
65	WQFU646	450-470	CCOM OF CNY	40.0	43.149722	-76.074444
66	WQGH849	450-470	CCOM OF CNY	32.0	43.035111	-76.139361
67	WQYL379	150-174	CENTRAL NEW YORK REGIONAL TRANSPORTATIONAUTHORITY	40.0	43.035139	-76.153056
68	WRFC481	150-174	Central Square Central School District	40.0	43.257944	-76.019083
69	WQBE823	150-174	CHENANGO, COUNTY OF	40.0	42.507583	-75.538528



ID	Call Sign	Frequency Band (MHz)	Licensee	Mobile Area Radius (km)	Latitude (NAD83)	Longitude (NAD83)
70	WQBL559	150-174	CHENANGO, COUNTY OF	40.0	42.531472	-75.519361
71	WQAB571	25-50	CHITTENANGO, VILLAGE OF	19.0	43.057833	-75.865917
72	WRDW760	450-470	CLEMENTE FANE CONCRETE	75.0	43.157917	-75.329889
73	WNDK970	150-174	CLINTON CENTRAL SCHOOL	35.0	43.049722	-75.382222
74	KCQ302	150-174	CLINTON, VILLAGE OF	25.0	43.049667	-75.378722
75	WPHR944	450-470	COLGATE UNIVERSITY	16.0	42.817556	-75.532944
76	WPME237	150-174	COLGATE UNIVERSITY	16.0	42.818111	-75.535167
77	WPQE210	450-470	COLGATE UNIVERSITY	32.0	42.818111	-75.535167
78	WPRL407	450-470	COLGATE UNIVERSITY BUILDINGS & GROUNDS	16.0	42.818111	-75.535167
79	WPQE798	450-470	COLGATE UNIVERSITY DBA COLGATE CAMPUS SAFETY	32.0	42.818111	-75.535167
80	WPMI316	450-470	CONMED CORPORATION	32.0	43.087028	-75.284056
81	KNAA588	150-174	CONSTANTIA, TOWN OF	32.0	43.248389	-75.932972
82	WQYP280	150-174	COOPER CROUSE - HINDS, LLC	32.0	43.082833	-76.157139
83	WPNR417	450-470	CORNEYS ELECTRONICS INC	32.0	43.040556	-75.629167
84	WPPU436	450-470	CORNEYS ELECTRONICS INC	32.0	43.046722	-75.665750
85	WQOH963	450-470	County of Madison	32.0	42.916667	-75.666667
86	WQPV647	150-174	County of Madison	40.0	42.951139	-75.731250
87	WPNQ427	150-174	CREATIVE ELECTRONICS, LLC	121.0	42.530917	-75.089611
88	KDT599	150-174	CSX Transportation Inc	40.0	43.145278	-75.176111
89	KEA367	150-174	CSX Transportation Inc	40.0	43.063389	-76.065472
90	KGQ279	150-174	CSX Transportation Inc	40.0	43.072833	-76.030194
91	KKR640	150-174	CSX Transportation Inc	40.0	43.140611	-76.194917
92	KKR640	150-174	CSX Transportation Inc	40.0	43.073139	-76.173528
93	KKR640	150-174	CSX Transportation Inc	40.0	43.065000	-76.064417
94	WPHR722	450-470	CUZZOLA, PATRICK	121.0	42.758667	-76.331333



ID	Call Sign	Frequency Band (MHz)	Licensee	Mobile Area Radius (km)	Latitude (NAD83)	Longitude (NAD83)
95	WPEK397	450-470	CUZZOLA, PATRICK A	121.0	42.758667	-76.331333
96	WPHS608	450-470	CUZZOLA, PATRICK A	121.0	42.758667	-76.331333
97	WQJK295	450-470	DCMO BOCES	32.0	42.585528	-75.517194
98	KNJJ846	150-174	DEANSBORO FIRE DISTRICT	40.0	42.992194	-75.429111
99	WNXW210	450-470	DELAWARE CHENANGO BOCES	48.0	42.565417	-75.673111
100	WQJI266	450-470	Delaware Chenango Madison Otsego BOCES DBA DCMO BOCES	32.0	42.585306	-75.520694
101	WQBN576	150-174	DELAWARE OTSEGO CORPORATION/NEW YORK SUSQUEHANNA & WESTERN RAILROAD	40.0	42.948333	-76.023889
102	WPEQ702	450-470	DELUXE CAB CO	80.0	42.796750	-76.541611
103	KBQ807	150-174	DEWITT, TOWN OF	32.0	43.014222	-76.044694
104	WRUT547	450-470	DMR Booking Agency LLC	80.0	43.047917	-76.153556
105	WQJY510	450-470	DOYLE SECURITY SYSTEMS, INC.	80.0	43.077139	-76.058583
106	KJO443	150-174	DUFLO SPRAY CHEMICAL INC	121.0	43.838944	-75.430194
107	WNRZ302	450-470	EATON, TOWN OF	19.0	42.889750	-75.624917
108	WQBH852	150-174	EDICK, FREDRICK J	40.0	43.137556	-75.707889
109	WQWY914	450-470	ENEL GREEN POWER, NORTH AMERICA	20.0	42.999694	-75.762750
110	WRUV780	450-470	EVERSON MUSEUM OF ARTS	32.0	43.044444	-76.146389
111	WNNN520	25-50	FABIUS, TOWN OF	24.0	42.880611	-75.973250
112	WQWG906	800/900	FAST, CAROL A	50.0	43.169611	-76.115139
113	KWL322	150-174	FAXTON ST LUKES HEALTHCARE	40.0	43.097583	-75.275722
114	KWL322	450-470	FAXTON ST LUKES HEALTHCARE	32.0	43.096250	-75.273750
115	WNRD769	450-470	FAYETTEVILLE MANLIUS SCHOOL	32.0	43.008667	-75.958250
116	WNRD769	450-470	FAYETTEVILLE MANLIUS SCHOOL	40.0	43.008667	-75.958250
117	WPAX644	150-174	FENNER, TOWN OF	24.0	42.952972	-75.786361



ID	Call Sign	Frequency Band (MHz)	Licensee	Mobile Area Radius (km)	Latitude (NAD83)	Longitude (NAD83)
118	WRAF632	150-174	FINGERLAKES RAILWAY CORPORATION	40.0	43.061972	-76.219278
119	WQYC894	450-470	First Transit, Inc.	16.0	42.817778	-75.534000
120	WRBR836	150-174	FRAZEE FARMS LLC	40.0	42.898250	-75.931583
121	KVF509	150-174	FULTON OSWEGO MOTOR EXPRESS INC	64.0	43.329222	-76.417722
122	WQGX726	150-174	GALAXY UTICA LICENSEE LLC (NEW)	40.0	43.146111	-75.177500
123	WQVM568	450-470	GENUINE PARTS COMPANY	24.0	43.062889	-76.060917
124	KPF277	450-470	Gray Television Licensee, LLC	161.0	42.132306	-75.962417
125	WNLP259	450-470	GREENE CENTRAL SCHOOL	64.0	42.296389	-75.747222
126	WQTT656	150-174	GROWMARK FS, LLC	20.0	42.912306	-75.381833
127	WQEX401	450-470	HAMILTON FIRE DEPARTMENT	24.0	42.820250	-75.551528
128	WQET652	450-470	HAMILTON CENTRAL SCHOOLS	32.0	42.820972	-75.546917
129	WQFU357	150-174	HAMILTON COLLEGE	24.0	43.054278	-75.417750
130	WPQD576	450-470	HAMILTON, VILLAGE OF	8.0	42.822833	-75.545167
131	KNJM272	25-50	HECTOR, TOWN OF	121.0	42.462861	-76.770500
132	KNHT824	150-174	HERKIMER, VILLAGE OF	64.0	43.027028	-74.986000
133	WQUD766	450-470	HOLY SHIRT	32.0	43.050611	-76.091500
134	WQUD741	450-470	HP HOOD LLC	32.0	43.080000	-75.649167
135	WQQX879	450-470	HUTCHINGS PSYCHIATRIC CENTER	32.0	43.046194	-76.141972
136	KNIW929	150-174	HWY DEPT AMBOY TOWN OF	64.0	43.374250	-75.940194
137	KB55303	450-470	IHM LICENSES, LLC	40.0	43.059222	-76.133528
138	KPM739	450-470	IMAGICOMM SYRACUSE, LLC	50.0	43.059222	-76.133528
139	WQWG907	800/900	Iota Spectrum Holdings, LLC	50.0	43.169611	-76.115139
140	WQWG904	800/900	Iota Spectrum Partners, LP	50.0	43.169611	-76.115139
141	KWU776	150-174	ITHACA COLLEGE SCHOOL OF COMMUNICATIONS	80.0	42.424250	-76.491889
142	KNNP546	25-50	J K TOBIN CONSTRUCTION CO INC	40.0	43.026444	-76.078806



ID	Call Sign	Frequency Band (MHz)	Licensee	Mobile Area Radius (km)	Latitude (NAD83)	Longitude (NAD83)
143	WNDB549	450-470	JAMES ROSS & SON CONTRACTORS INC	48.0	42.966722	-76.199917
144	WPFJ780	450-470	JAMESVILLE DE WITT CENTRAL SCHOOLS	32.0	43.007000	-75.914083
145	WQDV290	450-470	JCPENNEY SHARED SERVICES CENTER	32.0	43.080000	-75.314167
146	WQEA509	450-470	JCPENNEY SHARED SERVICES CENTER	32.0	43.039167	-76.066111
147	WRAQ820	450-470	JK Automotive	32.0	43.190250	-75.726694
148	KNHF831	450-470	JPJ Electronic Communications Inc	121.0	43.145361	-75.176000
149	WNRM625	450-470	JPJ Electronic Communications Inc	32.0	42.948333	-76.023889
150	WPCB519	450-470	JPJ Electronic Communications Inc	56.0	43.143889	-75.177500
151	WPDB625	800/900	JPJ Electronic Communications Inc	113.0	43.142861	-75.175722
152	WPDE963	800/900	JPJ Electronic Communications Inc	113.0	43.142861	-75.175722
153	WPDE964	800/900	JPJ Electronic Communications Inc	113.0	43.142861	-75.175722
154	WPDQ874	800/900	JPJ Electronic Communications Inc	113.0	43.142861	-75.175722
155	WPDW232	800/900	JPJ Electronic Communications Inc	113.0	43.142861	-75.175722
156	WPEM256	800/900	JPJ Electronic Communications Inc	113.0	43.142861	-75.175722
157	WPHI441	800/900	JPJ Electronic Communications Inc	113.0	43.142861	-75.175722
158	WPHM952	800/900	JPJ Electronic Communications Inc	113.0	43.142861	-75.175722
159	WPMY630	450-470	JPJ Electronic Communications Inc	32.0	42.946444	-76.025194
160	WQOZ938	150-174	JPJ Electronic Communications Inc	65.0	43.142778	-75.175833
161	WRHT254	450-470	JPJ Electronic Communications Inc	32.0	43.115111	-75.589861
162	WPEK984	800/900	KELLER, Michael L	113.0	42.419528	-75.012111
163	WQIG841	450-470	Keltron Corporation	120.0	43.012028	-74.282139
164	WQVA288	450-470	Keltron Corporation	80.0	42.819528	-75.533306
165	WRPX795	450-470	KELTRON CORPORATION	80.0	43.037000	-76.131778
166	WQHG788	450-470	L P S ENTERPRISES OF NEW YORK LTD	32.0	43.078917	-75.642500
167	KJO225	25-50	LANCASTER DEVELOPMENT INC	121.0	42.645361	-74.448750





ID	Call Sign	Frequency Band (MHz)	Licensee	Mobile Area Radius (km)	Latitude (NAD83)	Longitude (NAD83)
168	WQFU641	450-470	LANPHER TRANSPORTATION	32.0	42.973333	-76.197500
169	KZI270	150-174	LENOX, TOWN OF	40.0	43.090333	-75.756028
170	WNZD532	150-174	LEONARD, STANLEY N	64.0	42.550639	-75.260167
171	WNGW990	450-470	LIBERTY ENTERPRISES	121.0	42.790361	-74.321806
172	WQVW654	150-174	LIVERPOOL CENTRAL SCHOOL DISTRICT	40.0	43.111167	-76.216917
173	WQBA982	450-470	LOCKHEED MARTIN CORPORATION	8.0	42.926528	-75.925306
174	WRUJ434	450-470	Lyncourt Union Free School District	32.0	43.084528	-76.131500
175	WNZW398	450-470	MADISON COUNTY 911	40.0	43.000056	-75.749639
176	KA59023	150-174	MADISON, COUNTY OF	16.0	43.063944	-75.866917
177	KA59023	450-470	MADISON, COUNTY OF	4.0	42.956722	-75.742417
178	KA59023	150-174	MADISON, COUNTY OF	40.0	43.046667	-75.665833
179	WPVX795	450-470	MADISON, COUNTY OF	32.0	42.956722	-75.742417
180	WQTS736	450-470	MADISON, TOWN OF, HIGHWAY DEPT	16.0	42.903389	-75.515194
181	WNPP766	25-50	MALLEY, MARCUS A	121.0	43.077556	-76.096861
182	WQRD343	150-174	MANLIUS, VILLAGE OF	32.0	43.005250	-75.980389
183	WQZF407	450-470	Manufacturers & Traders Trust Co	32.0	43.050278	-76.151750
184	KPG768	450-470	MARS HILL BROADCASTING CO. INC.	56.0	43.070333	-76.097417
185	WQMF402	150-174	MARSHALL, TOWN OF	18.0	42.995833	-75.424083
186	WQTZ557	150-174	MAYO, TERRANCE	24.0	43.009250	-75.910944
187	WQTZ557	150-174	MAYO, TERRANCE	40.0	43.009250	-75.910944
188	WPNY453	450-470	MAYO, TERRANCE F	32.0	43.008944	-75.914083
189	WPPZ448	450-470	MAYO, TERRANCE F	32.0	43.007000	-75.914083
190	WQEM688	450-470	MAYO, TERRANCE F	32.0	43.009250	-75.910944
191	KNJA863	450-470	MEIXELL, DONALD T	72.0	43.369778	-76.300222
192	WQKG795	450-470	MERCY FLIGHT CENTRAL INC.	32.0	42.945000	-76.024167



ID	Call Sign	Frequency Band (MHz)	Licensee	Mobile Area Radius (km)	Latitude (NAD83)	Longitude (NAD83)
193	WQHS809	150-174, 450-470	METROPOLITAN WATER BOARD	32.0	42.946722	-76.117417
194	KC27630	450-470	Mission Broadcasting, Inc.	80.0	43.145361	-75.176000
195	WPMI918	150-174	Mobiletech Communications	40.0	42.666167	-76.142694
196	WPOY248	150-174	Mobiletech Communications	40.0	43.143389	-76.183250
197	WPQG762	150-174	Mobiletech Communications	40.0	43.049500	-76.217694
198	WPRF782	150-174	Mobiletech Communications	40.0	43.066111	-75.665833
199	WPRG946	150-174	Mobiletech Communications	40.0	43.066111	-75.665833
200	WQZT966	450-470	MOBILETECH COMMUNICATIONS	32.0	43.113889	-76.111806
201	WRNR553	150-174, 450-470	MOBILETECH COMMUNICATIONS	32.0	43.129278	-75.318333
202	WPXR855	150-174	MOBILETECH COMMUNICATIONS CORP	40.0	42.760833	-75.573889
203	WQFY700	150-174	MOBILETECH COMMUNICATIONS CORP	40.0	43.125833	-75.207222
204	WQHM494	150-174	MOBILETECH COMMUNICATIONS CORP	40.0	43.308667	-75.766306
205	WQIK504	150-174	MOBILETECH COMMUNICATIONS CORP	40.0	43.125833	-75.207222
206	WQEM969	150-174, 450-470	MOBILETECH COMMUNICATIONS CORP.	40.0	42.982028	-75.109056
207	WQFN484	150-174	MOBILETECH COMMUNICATIONS CORP.	40.0	42.672556	-75.785750
208	WNMH358	450-470	MORRIS, TOWN OF	56.0	42.550639	-75.260167
209	WRUK867	450-470	MORRISVILLE EATON CENTRAL SCHOOL	13.0	42.895556	-75.644639
210	WQIE355	450-470	Munnsville Wind Farm, LLC	32.0	42.947722	-75.542583
211	WQON373	150-174	MUSHALA, JOE	40.0	42.941750	-75.235444
212	WQGD984	450-470	NATIONAL CENTER FOR MISSING & EXPLOITED CHILDREN	161.0	43.104639	-75.251056
213	WPHE278	450-470	NATIONAL GRID USA SERVICE COMPANY INC	48.0	43.051444	-76.156583
214	KB44247	450-470	National Grid USA Service Company Inc.	32.0	42.971167	-76.196861
215	KB44247	450-470	National Grid USA Service Company Inc.	32.0	43.051444	-76.156583
216	KB44247	450-470	National Grid USA Service Company Inc.	32.0	43.008944	-75.909083



ID	Call Sign	Frequency Band (MHz)	Licensee	Mobile Area Radius (km)	Latitude (NAD83)	Longitude (NAD83)
217	KB44247	450-470	National Grid USA Service Company Inc.	32.0	43.163389	-75.716028
218	KFV614	150-174	National Grid USA Service Company Inc.	24.0	42.947833	-76.027417
219	KNED371	0-10	National Grid USA Service Company Inc.	322.0	43.058389	-76.154917
220	WNUX419	800/900	National Grid USA Service Company Inc.	97.0	43.013389	-75.716028
221	WNUX423	800/900	National Grid USA Service Company Inc.	97.0	42.912028	-74.883472
222	WQGL948	150-174	National Grid USA Service Company Inc.	40.0	43.013389	-75.716028
223	KNJW987	150-174, 450-470	NATIONAL SKI PATROL SYSTEM INC	32.0	42.825833	-75.960000
224	KNJW987	150-174, 450-470	NATIONAL SKI PATROL SYSTEM INC	16.0	42.830056	-75.957972
225	WNIX698	150-174	NATIONAL SKI PATROL SYSTEM INC	48.0	43.297861	-75.385167
226	WYD940	450-470	NATIONAL SKI PATROL SYSTEM INC	32.0	42.736111	-76.038889
227	WYD940	150-174	NATIONAL SKI PATROL SYSTEM INC	40.0	42.736111	-76.038889
228	WQQF898	450-470	NEPTUNE TECHNOLOGY GROUP, INC.	32.0	43.126389	-75.408333
229	WQQF898	450-470	NEPTUNE TECHNOLOGY GROUP, INC.	32.0	43.114167	-75.316667
230	WQQJ859	450-470	NEPTUNE TECHNOLOGY GROUP, INC.	32.0	43.147778	-75.324417
231	WQQJ859	450-470	NEPTUNE TECHNOLOGY GROUP, INC.	32.0	42.879917	-75.254806
232	WQRF985	450-470	NEPTUNE TECHNOLOGY GROUP, INC.	32.0	43.084889	-75.351583
233	WQRF985	450-470	NEPTUNE TECHNOLOGY GROUP, INC.	32.0	43.067083	-75.296083
234	WQRF985	450-470	NEPTUNE TECHNOLOGY GROUP, INC.	32.0	43.024222	-75.276889
235	WQRF985	450-470	NEPTUNE TECHNOLOGY GROUP, INC.	32.0	43.071556	-75.230278
236	KNNV445	150-174	NEW HARTFORD, VILLAGE OF	40.0	43.072028	-75.288222
237	WRXI655	150-174	NEW YORK MILLS, VILLAGE OF	40.0	43.108417	-75.291278
238	KD36985	450-470	New York Power Authority	89.0	42.633417	-76.316333
239	WPVZ482	25-50	NEW YORK POWER AUTHORITY	40.0	43.065889	-75.667417
240	WPVZ482	25-50	NEW YORK POWER AUTHORITY	40.0	43.180917	-75.222389
241	WQAY816	25-50	New York State Canal Corporation	25.5	43.209722	-75.644861



ID	Call Sign	Frequency Band (MHz)	Licensee	Mobile Area Radius (km)	Latitude (NAD83)	Longitude (NAD83)
242	WRUL243	150-174	New York State College of Environmental Science & Forestry	40.0	42.763944	-76.086861
243	WPZT609	450-470	NEW YORK STATE DEPARTMENT OF CORRECTIONS AND COMMUNITY SUPERVISION	32.0	42.736167	-75.738500
244	KLG395	25-50	New York State Department of Transportation	80.0	42.554250	-76.148528
245	WPWE803	150-174	New York State Dept of Environmental Conservation	24.0	42.810611	-75.750472
246	WPWE803	150-174	New York State Dept of Environmental Conservation	40.0	42.549528	-75.689917
247	KA2127	25-50	NEW YORK STATE ELECTRIC & GAS CORPORATION	96.6	42.500083	-74.999611
248	KEB575	25-50	NEW YORK STATE ELECTRIC & GAS CORPORATION	362.1	42.583417	-76.082972
249	KEB680	150-174	NEW YORK STATE ELECTRIC & GAS CORPORATION	97.0	42.062583	-75.944361
250	WQUP763	450-470	NEW YORK STATE OFFICE OF MENTAL HEALTH	32.0	43.101611	-75.258250
251	KOE361	150-174	New York State Office of Parks, Recreation & Historic Preservation (OPRHP) - Central Region	40.0	42.948333	-76.023889
252	WRYS579	150-174	NEW YORK STATE POLICE	60.0	43.145833	-75.381389
253	KB50880	450-470	NEW YORK, STATE OF	56.0	43.183417	-75.487944
254	KB50886	450-470	NEW YORK, STATE OF	56.0	43.041722	-76.133250
255	KNEP998	25-50	NEW YORK, STATE OF	80.0	42.458417	-76.384667
256	WPHC271	25-50	New York, State of	121.0	43.737556	-75.570472
257	KLG391	25-50	NEW YORK, STATE OF D O T	40.0	42.958389	-75.741306
258	KLG393	25-50	NEW YORK, STATE OF D O T	40.0	43.037583	-75.434333
259	KLG396	25-50	NEW YORK, STATE OF D O T	40.0	42.948333	-76.023889
260	KLG397	25-50	NEW YORK, STATE OF D O T	40.0	42.996722	-76.288528
261	KLG398	25-50	NEW YORK, STATE OF D O T	80.0	43.447833	-76.236306
262	KLS597	25-50	NEW YORK, STATE OF D O T	40.0	43.144250	-75.178778
263	WXK758	25-50	NEW YORK, STATE OF D O T	40.0	43.054778	-75.617667
264	WQWY793	150-174	NEW YORK, STATE OF, DIVISION OF STATE POLICE	55.0	42.583333	-75.250000



ID	Call Sign	Frequency Band (MHz)	Licensee	Mobile Area Radius (km)	Latitude (NAD83)	Longitude (NAD83)
265	WQXB935	150-174	NEW YORK, STATE OF, DIVISION OF STATE POLICE	45.0	43.145833	-76.175000
266	WQXJ444	150-174	NEW YORK, STATE OF, DIVISION OF STATE POLICE	60.0	43.166667	-75.416667
267	WNDR986	450-470	NEWARK VALLEY CENTRAL SCHOOL DISTRICT	80.0	42.274806	-76.193528
268	BLP00440	25-50	Nexstar Media Inc.	80.0	43.048111	-76.147417
269	BLP00877	150-174	Nexstar Media Inc.	64.0	43.055889	-76.064917
270	WPJG863	450-470	Nexstar Media Inc.	80.0	43.055889	-76.064917
271	WQLW672	150-174, 470-512	Nexstar Media Inc.	400.0	42.672278	-73.752889
272	WQYF361	800/900	NEXTEL WEST CORP.	113.0	43.147778	-75.324444
273	WRBV855	800/900	NEXTEL WEST CORP.	113.0	42.571111	-76.120833
274	WRBV862	800/900	NEXTEL WEST CORP.	113.0	43.061889	-74.351000
275	WNAZ566	25-50	NORTH AREA VOLUNTEER AMBULANCE CORPS	40.0	43.142000	-76.127417
276	WQLD971	450-470	NORTH SYRACUSE CSD	56.0	43.122611	-76.143889
277	WQGC559	450-470	Northrop Grumman Systems Corporation	32.0	43.090583	-75.279500
278	WQGC559	150-174	Northrop Grumman Systems Corporation	40.0	43.090583	-75.279500
279	WNRQ339	450-470	NORTON GAS	48.0	42.985889	-75.624639
280	WPMW421	450-470	NU TRONICS OF SYRACUSE INC	60.0	42.853667	-76.178806
281	WQPC378	450-470	NU TRONICS OF SYRACUSE INC.	32.0	43.007000	-75.914083
282	WNIE219	450-470	NU-TRONICS OF SYRACUSE, INC.	32.0	43.007000	-75.914083
283	WQRJ478	150-174	OCUTO BLACKTOP PAVING CO INC	40.0	43.194556	-75.456722
284	WXP566	150-174	ONEIDA CASTLE FIRE DEPT INC	16.0	43.082528	-75.628306
285	KNDZ923	150-174	ONEIDA, COUNTY OF	40.0	43.090917	-75.257667
286	KNNQ268	150-174	ONEIDA, COUNTY OF	40.0	43.155917	-75.376556
287	WPHM647	150-174	ONEIDA, COUNTY OF	40.0	43.155000	-75.377778
288	WPLV246	150-174	ONEIDA, COUNTY OF	40.0	43.037222	-75.446667
289	WPWM474	450-470	ONEIDA, COUNTY OF	32.0	43.037222	-75.446667



ID	Call Sign	Frequency Band (MHz)	Licensee	Mobile Area Radius (km)	Latitude (NAD83)	Longitude (NAD83)
290	WPWM474	450-470	ONEIDA, COUNTY OF	32.0	43.152306	-75.372389
291	WPZI876	150-174	ONEIDA, COUNTY OF	40.0	43.155000	-75.377778
292	WQYF524	150-174	ONEIDA, COUNTY OF	32.0	43.154417	-75.377778
293	KWH436	450-470	Ononadaga, County of	32.0	42.948333	-76.023889
294	WNKJ581	450-470	ONONDAGA CENTRAL SCHOOL	32.0	42.967000	-76.199639
295	WSY663	150-174	ONONDAGA CONCRETE CO INC.	80.0	42.946167	-76.028806
296	WSY663	150-174	ONONDAGA CONCRETE CO INC.	40.0	42.945000	-76.024444
297	WQDI541	150-174	ONONDAGA COUNTY WATER AUTHORITY	25.0	43.221167	-75.717972
298	KD24812	450-470	ONONDAGA, COUNTY OF	32.0	43.006722	-76.191583
299	KNCE438	450-470	ONONDAGA, COUNTY OF	121.0	43.044778	-76.148250
300	KNGJ827	450-470	Ononadaga, County of	32.0	43.071444	-76.147694
301	WNDP918	450-470	ONONDAGA, COUNTY OF	32.0	43.006167	-76.191583
302	WNDR966	800/900	Ononadaga, County of	64.0	43.006167	-76.191583
303	WNDR967	800/900	Ononadaga, County of	64.0	43.006167	-76.191583
304	WNDU777	800/900	Ononadaga, County Of	64.0	43.006167	-76.191583
305	WNPI839	450-470	ONONDAGA, COUNTY OF	56.0	42.946444	-76.025194
306	WNZU747	150-174	ONONDAGA, COUNTY OF	64.0	43.006167	-76.191583
307	WPLS261	800/900	ONONDAGA, COUNTY OF	32.0	42.955333	-76.109083
308	WQHK478	4940-4990	Ononadaga, County of	42.0	43.051167	-76.153528
309	WQKP307	450-470	ONONDAGA, COUNTY OF	32.0	43.045667	-76.148111
310	KNAD830	150-174	ORISKANY FALLS VOL FIRE DEPT INC	24.0	42.940083	-75.460444
311	WZY288	150-174	OWEGO, VILLAGE OF	322.0	42.105083	-76.262722
312	WRXU798	150-174	PARAMOUNT TRANSPORTATION SYSTEMS INC	40.0	43.081667	-76.159722
313	WNRC380	800/900	PECO ENERGY COMPANY	644.0	40.015944	-75.619111
314	WPQB874	150-174	PFEIFFER, TERRY L	40.0	42.853667	-76.179083



ID	Call Sign	Frequency Band (MHz)	Licensee	Mobile Area Radius (km)	Latitude (NAD83)	Longitude (NAD83)
315	WPYG236	150-174	PFEIFFER, TERRY L	40.0	43.049500	-76.217694
316	WPVL405	450-470	PHOENIX CENTRAL SCHOOLS	32.0	43.006944	-75.914444
317	WPVL405	450-470	PHOENIX CENTRAL SCHOOLS	32.0	43.006944	-75.914167
318	KA74819	450-470	RADIO LICENSE HOLDING CBC, LLC	32.0	43.041722	-76.124639
319	WQCN363	450-470	Rapid Response Monitoring Services, Inc.	80.0	43.059556	-76.156750
320	KTZ226	150-174, 450-470	ROBERT PACKER HOSPITAL	161.0	41.951194	-76.530500
321	WQBS211	450-470	ROME STRIP STEEL COMPANY INC	32.0	43.212278	-75.469611
322	KLX279	150-174	ROME, CITY OF, FIRE DEPT	116.0	43.211194	-75.452389
323	WPIT737	800/900	Rome, City of, Police Department	116.0	43.214250	-75.455444
324	WNB901	450-470	ROME, CITY OF, WATER DEPT	34.0	43.223417	-75.446278
325	WRAF809	450-470	Saia Communications	32.0	42.966944	-76.199722
326	KFD85	150-174	SALINA, TOWN OF	32.0	43.091444	-76.136306
327	WQRU860	450-470	SHERBURNE, TOWN OF, HIGHWAY DEPARTMENT	40.0	42.693139	-75.500917
328	WQFK425	450-470	SHERBURNE-EARLVILLE CENTRAL SCHOOL DISTRICT	25.0	42.691417	-75.496444
329	KEH933	25-50	SHERRILL, CITY OF	32.0	43.051722	-75.603778
330	WQBQ868	450-470	SKANEATELES, TOWN OF	32.0	42.880611	-76.199639
331	WQAB574	450-470	SMITHFIELD, TOWN OF	16.0	42.967306	-75.682750
332	WQWJ894	450-470	SOUTHERN WINE & SPIRITS	32.0	43.084056	-76.124500
333	WPOB678	25-50, 150-174	Speedway LLC	121.0	42.931722	-76.566056
334	WPOB715	25-50, 150-174	Speedway LLC	121.0	42.115639	-75.958806
335	WQRL610	150-174	Spruce Eden Dairy, LLC	40.0	42.650333	-76.122611
336	KUS644	150-174	ST ELIZABETH MEDICAL CENTER	32.0	43.082028	-75.266278
337	WPZU624	450-470	ST JOSEPHS HOSPITAL HEALTH CENTER	32.0	43.052833	-76.151028
338	WPZU625	450-470	ST JOSEPHS HOSPITALS INC	32.0	43.056167	-76.149917
339	WQWA317	150-174	STATE OF NEW YORK, DIVISON OF STATE POLICE	60.0	43.166667	-75.952778



ID	Call Sign	Frequency Band (MHz)	Licensee	Mobile Area Radius (km)	Latitude (NAD83)	Longitude (NAD83)
340	WQWA317	150-174	STATE OF NEW YORK, DIVISON OF STATE POLICE	80.0	43.447778	-75.346667
341	KBG702	150-174	Suit-Kote Corporation	105.0	42.547306	-76.168250
342	WPDK913	150-174	Suit-Kote Corporation	105.0	42.547306	-76.168250
343	KEI616	150-174	SULLIVAN, TOWN OF	40.0	43.083389	-75.894639
344	WROS487	450-470	SUNY HEALTH SCIENCE CENTER AT SYRACUSE	32.0	43.042056	-76.141694
345	WROS487	450-470	SUNY HEALTH SCIENCE CENTER AT SYRACUSE	32.0	43.042333	-76.138806
346	WQAU758	150-174	SUNY Morrisville	16.0	42.893472	-75.640556
347	KD34490	450-470	SYRACUSE UNIVERSITY	121.0	42.037028	-76.134639
348	KNNN236	450-470	SYRACUSE UNIVERSITY	121.0	43.037000	-76.134639
349	WNDQ748	450-470	SYRACUSE UNIVERSITY	40.0	43.033667	-76.131028
350	WNSU880	450-470	Syracuse University	64.0	43.041167	-76.121306
351	WPKX325	450-470	SYRACUSE UNIVERSITY	32.0	43.037000	-76.134639
352	WPLR847	450-470	SYRACUSE UNIVERSITY	32.0	43.037000	-76.134639
353	WPMH607	450-470	SYRACUSE UNIVERSITY	32.0	43.035333	-76.136306
354	WPNT866	450-470	SYRACUSE UNIVERSITY	32.0	43.033667	-76.131028
355	WPNU396	450-470	SYRACUSE UNIVERSITY	32.0	43.037000	-76.134639
356	WPNW602	450-470	SYRACUSE UNIVERSITY	32.0	43.035333	-76.136306
357	WPRV778	450-470	SYRACUSE UNIVERSITY	32.0	43.025333	-76.114361
358	KNNJ413	150-174	SYRACUSE UNIVERSITY AMBULANCE	40.0	43.041167	-76.121306
359	WPJW750	800/900	SYRACUSE, CITY OF	112.0	43.033667	-76.150194
360	WPEC327	450-470	T & K COMMUNICATIONS INC	80.0	42.297028	-75.950194
361	WNDS871	450-470	T&K COMMUNICATIONS SYS INC	121.0	42.030083	-76.208806
362	WPUY890	800/900	T&K Communications Systems, Inc	113.0	42.063694	-75.950194
363	WQLS502	150-174	TABERG VOL FIRE CO INC	40.0	43.300056	-75.616111
364	WPWM266	450-470	Target Corporation	32.0	43.030278	-76.016667





ID	Call Sign	Frequency Band (MHz)	Licensee	Mobile Area Radius (km)	Latitude (NAD83)	Longitude (NAD83)
365	WPXH463	150-174	THE PFEIFFER GROUP	40.0	43.222556	-75.485167
366	WPTU791	150-174	THE PFEIFFER GROUP	40.0	43.021222	-75.918889
367	WPYF731	150-174	THE PFEIFFER GROUP	40.0	43.022500	-75.919722
368	WNNG232	150-174	TLC MEDICAL TRANSPORTATION SVCS INC	121.0	43.007000	-76.164083
369	WQBZ750	800/900	Tompkins County Department of Emergency Response	113.0	42.579250	-76.551889
370	WPGK862	450-470	TOMPKINS, ALLAN L	32.0	42.966944	-76.199722
371	WPGK862	450-470	TOMPKINS, ALLAN L	56.0	42.966944	-76.199722
372	WRFI745	450-470	Town of Dewitt Water Department	32.0	42.945000	-76.024167
373	KB96960	450-470	TOWNSQUARE MEDIA LICENSEE OF UTICA/ROME, INC.	32.0	43.037306	-75.444056
374	WRUB598	450-470	Trego Dugan Aviation of Grand Island, Inc.	32.0	43.114500	-76.116139
375	KIS414	450-470	TRI COUNTY COMMUNICATIONS INC	80.0	42.292583	-75.365444
376	KIS414	25-50, 450-470	TRI COUNTY COMMUNICATIONS INC	121.0	42.419806	-75.010722
377	KIS414	450-470	TRI COUNTY COMMUNICATIONS INC	80.0	42.597306	-74.859611
378	KIS414	450-470	TRI COUNTY COMMUNICATIONS INC	73.0	42.795361	-74.785694
379	WPEH707	25-50	TROY SAND & GRAVEL COMPANY INC	121.0	43.258389	-75.107944
380	WNSX212	150-174	tully central school	32.0	42.798111	-76.109361
381	WRFV933	450-470	TULLY CENTRAL SCHOOL DISTRICT	32.0	42.796167	-76.114056
382	WNQJ625	150-174	TULLY, VILLAGE OF	64.0	42.483417	-76.166306
383	WRXI860	450-470	UNADILLA VALLEY SPORTS CENTER, INC	32.0	42.701861	-75.320278
384	WPMR709	450-470	UNITED PARCEL SERVICE	32.0	43.112278	-76.108528
385	WPMR711	450-470	UNITED PARCEL SERVICE	32.0	43.179500	-76.091306
386	WQTZ556	450-470	Upstate at Community General	32.0	43.007944	-76.167722
387	WNSY227	150-174	UTICA AMBULANCE SERVICE INC	48.0	43.101472	-75.223778
388	KE5784	450-470	Verizon New York Inc.	72.4	43.048667	-76.147139
389	WQBH289	150-174	VERNON CENTER FIRE DEPARTMENT	24.0	43.052583	-75.502667

ID	Call Sign	Frequency Band (MHz)	Licensee	Mobile Area Radius (km)	Latitude (NAD83)	Longitude (NAD83)
390	WRYH810	450-470	VERNON VERONA SHERRILL CENTRAL SCHOOL DISTRICT	16.0	43.072417	-75.602111
391	WRYH810	450-470	VERNON VERONA SHERRILL CENTRAL SCHOOL DISTRICT	16.0	43.071889	-75.546167
392	WQWG908	800/900	VIRGIE L. SMITH, LLC	50.0	43.169611	-76.115139
393	WQHD690	150-174	VOLUNTEER FIRE COMPANY OF VERNON	16.0	43.079111	-75.541194
394	KNGS474	150-174	WATERVILLE FIRE DEPT	24.0	42.931194	-75.376556
395	WPDM944	150-174	WATERVILLE, VILLAGE OF	24.0	42.928139	-75.375167
396	WPDT690	25-50	WAYNE PAVING COMPANY INC	80.0	43.275083	-75.507944
397	WNXA716	150-174	WEST WINFIELD, CITY OF	48.0	42.902028	-75.186000
398	WQU408	150-174	WHITESTOWN, TOWN OF POLICE DEPARTMENT	40.0	43.107028	-75.322417
399	WPRG430	450-470	Wilderness Search and Rescue Team	32.0	42.946167	-76.028806
400	WPCY740	450-470	WIRSIG, MARTIN	80.0	42.648417	-76.164917
401	KEK328	150-174	WKTU LICENSEE, LLC	72.4	43.143972	-75.177389

**Table A: Mobile Licenses Intersecting Project Area**