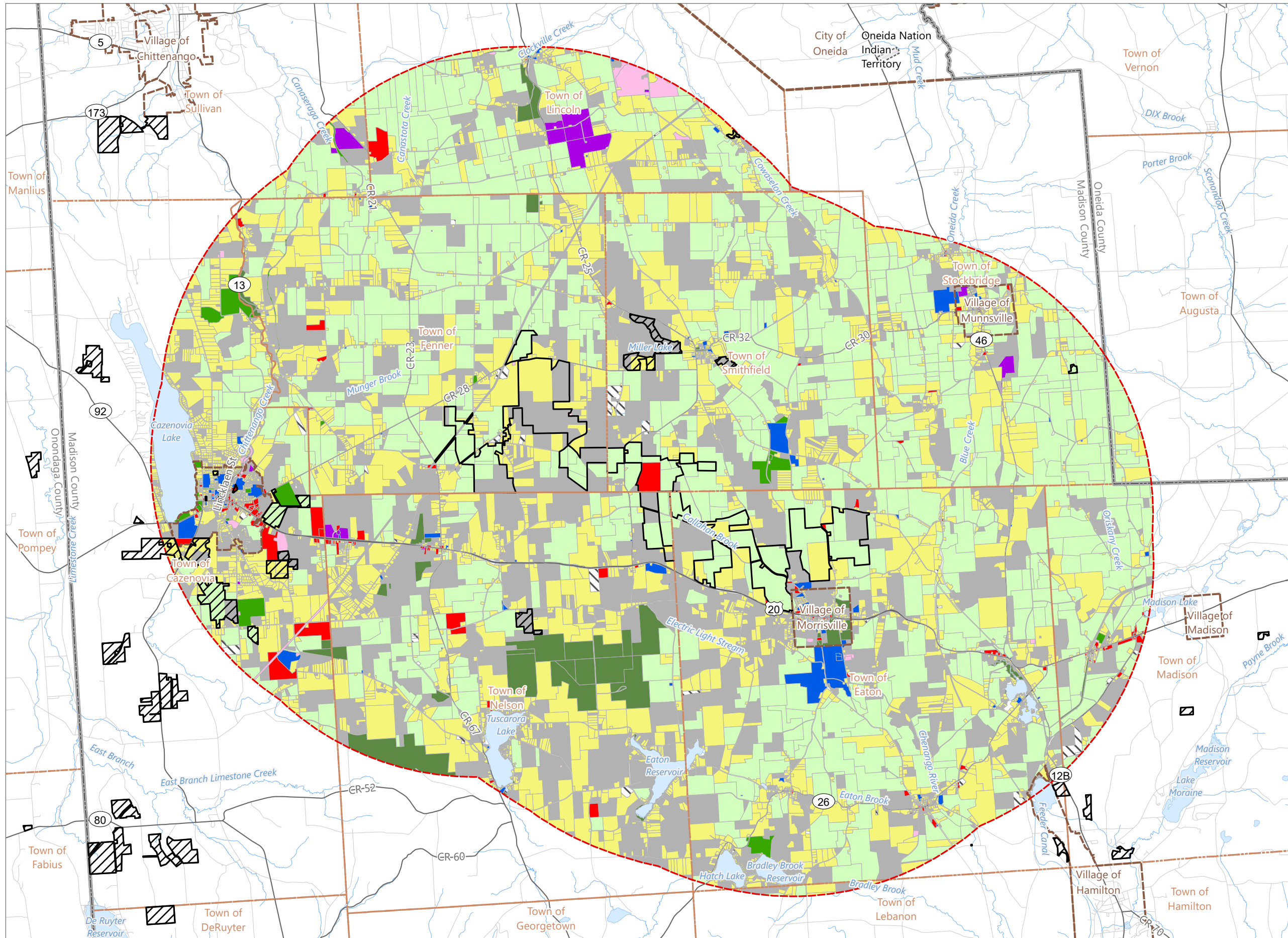


Figure 3-3. Existing Land Use



Hoffman Falls Wind

Towns of Eaton, Fenner, Nelson and Smithfield, Madison County, New York

**94-c Permit Application
Matter No. 23-00038**

- Land Use
- Agricultural
 - Residential
 - Vacant Land
 - Commercial
 - Recreation and Entertainment
 - Community Services
 - Industrial
 - Public Services
 - Wild, Forested, Conservation Lands and Public Parks
 - Not Defined
 - National Conservation Easement
 - Facility Site
 - 5-Mile Study Area



Prepared February 5, 2024
Basemap: Esri StreetMap North America, 2008