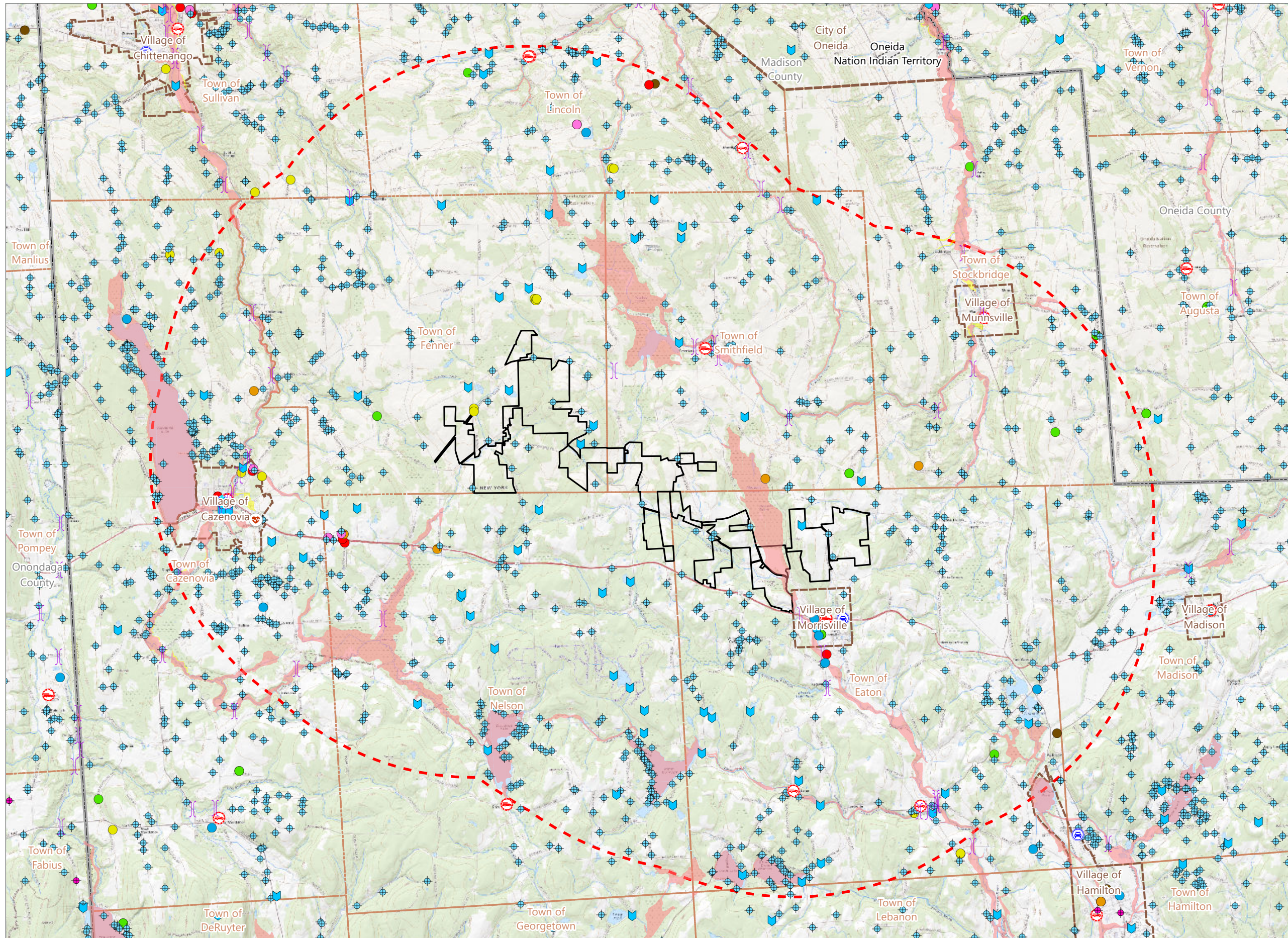


**Figure 6-1. Public Health and Safety**



## Hoffman Falls Wind

Towns of Eaton, Fenner, Nelson and  
Smithfield, Madison County,  
New York

**94-c Permit Application  
Matter No. 23-00038**

- ★ Emergency Operations Center
- 🚑 Ambulance Corps
- 🚒 Fire Station
- 🚓 Police Station
- 🏥 Hospital
- 🌉 Bridge
- ⚡ NYSDEC Mapped Water Well
- 🌊 NYSDEC Water Withdrawal Location
- 🏰 Regulated Dam
- ⚡ Electric Substation
- 🧪 Chemical Bulk Storage Facility
- 🌊 FEMA 100-Year Flood Hazard Area
- 🌊 FEMA 500-Year Flood Hazard Area
- EPA Facility Interests in Study Area**
- 🟢 Concentrated Animal Feeding Operation
- 🟠 Hazardous Waste Biennial Reporter
- 🟡 TRI Reporter
- 🔴 EPA Regulated Facility
- 🟤 NYSDEC Remediation Site
- Facility Components**
- ▭ Facility Site
- ⋮ 5-Mile Study Area



Prepared February 5, 2024  
Basemap: Esri "USGS Topo" map service