



Note: The image above is a panorama photograph taken from Chenango Street in the Town of Eaton panning clockwise from west (left) to northeast (right). The green rectangle represents the extent of the simulated photograph.

VIEWPOINT 33
Chenango Street

VIEWPOINT INFORMATION

Location: Chenango Street
Town: Eaton
County: Madison
Latitude: 42.89851° N
Longitude: 75.64173° W

LOCATION INFORMATION

Distance Zone Represented in View: Middle Ground
Viewer Distance*: 2.2 miles
Landscape Similarity Zone: Village
Viewer/User Group(s): Local Residents, Through-Travelers

Visually Sensitive Resource(s): US Route 20, Scenic Route 20, Bicentennial Architectural Trail, Village of Morrisville, Old Madison County Courthouse, Morrisville Engine House, Bicknell Hall, a two-story brick Colonial Revival-style academic building, Methodist Church, Morrisville Village Historic District, Brooks Hall, SUNY Morrisville Historic District, State University of New York College of Agriculture and Technology at Morrisville

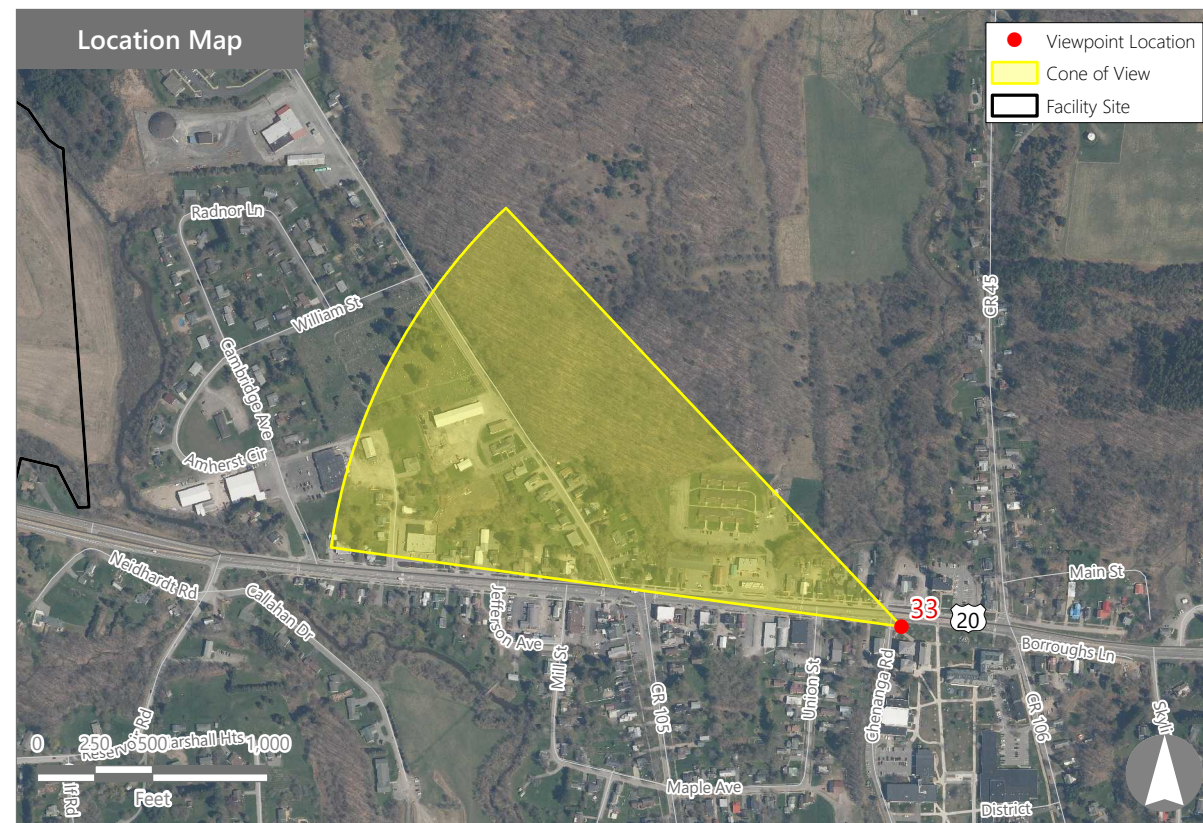
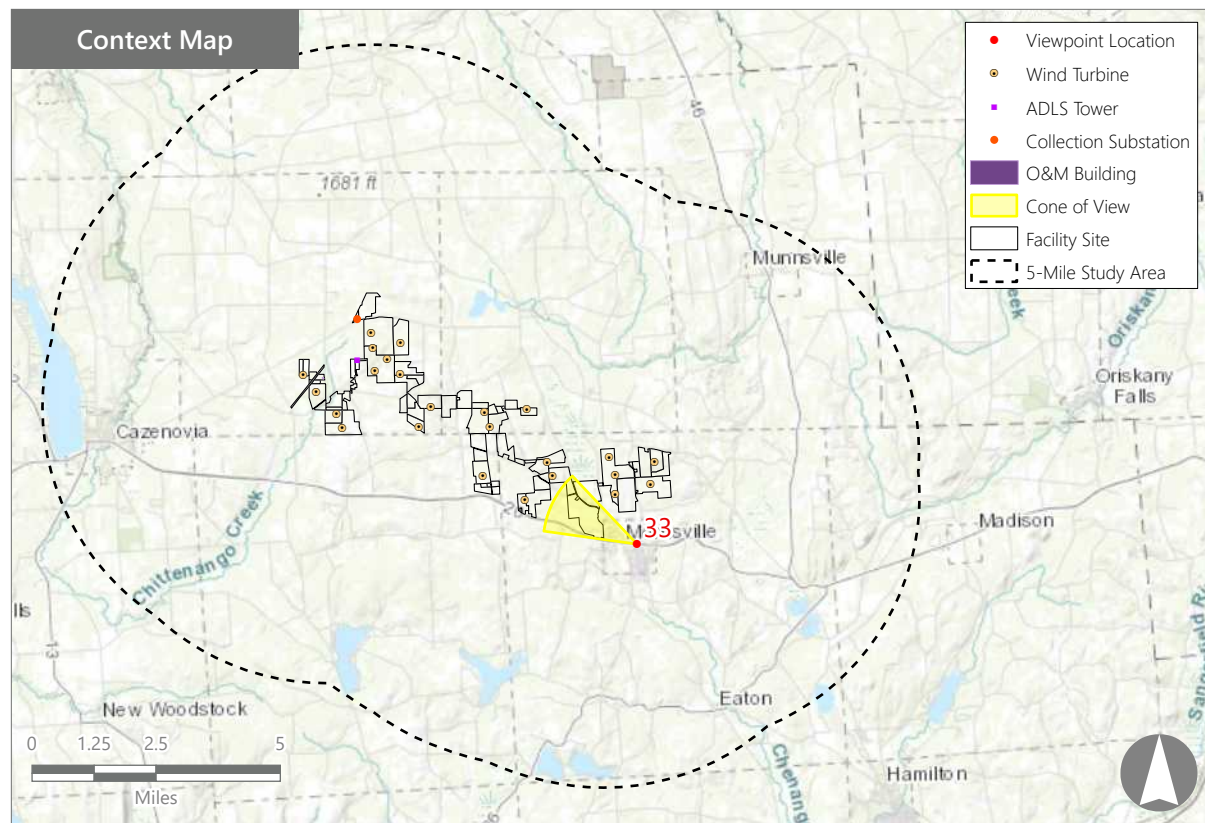
PHOTOGRAPH INFORMATION

Date: August 31, 2023
Time: 1:34 PM
Camera: Canon EOS 5D Mark IV
Resolution: 24 Megapixels
Lens Focal Length (35mm equivalent): 50 mm
Camera Elevation: 1,3922 feet
Field of View: 39 degrees
Direction of View: West-northwest
Printed Size: 10" x 15"
Viewing Distance:** 21"

NOTES

*Distance as measured from the viewpoint to the closest wind turbine generator within the simulated photograph's field of view

**The simulation is at the correct perspective when printed on an 11 inch by 17 inch sheet at full scale, and viewed approximately 21 inches from the eye of the viewer.



Hoffman Falls Wind Project

Towns of Eaton, Fenner, Nelson, and Smithfield, Madison County, New York

Visual Impact Assessment
Appendix 8-A

EXISTING VIEW



0 1 in 2 in
This scale is designed to insure the simulation images are printed at the intended size.

VIEWPOINT 33

Chenango Street

Hoffman Falls Wind Project
Towns of Eaton, Fenner, Nelson, and Smithfield, Madison County, New York

EDR

Sheet 44 of 113

Note: Printed at actual size, the existing view image is 15 inches wide by 10 inches high. At this size and focal length, the existing view image should be viewed from a distance 21 inches from the eye of the viewer.