



Field Data Sheet





Field Data Sheet

Notes :

Do you need to report observations of another open field?

Yes



Field Data Sheet

Corresponding Point ID(s): 13

Anthropogenic Disturbance/Management Practices: None notable

Primary Open Field Cover Type: Row Cropland (Active)

Estimated Grass Cover (%): None

Estimated Forb Cover (%): 10-25%

Estimated Woody Vegetation Cover (%): None

Estimated Bare Ground (%): 50-90%

Estimated Litter Depth (inches): None

Average Vegetation Height (inches): 6-12

Dominant Plant Species (Common Names): Corn

Invasive Plant Species (Common Names):

Representative Photo(s):





Field Data Sheet





Field Data Sheet

Notes :

Do you need to report observations of another open field?

Yes



Field Data Sheet

Corresponding Point ID(s): 14

Anthropogenic Disturbance/Management Practices: None notable

Primary Open Field Cover Type: Row Cropland (Active)

Estimated Grass Cover (%): None

Estimated Forb Cover (%): 25-50%

Estimated Woody Vegetation Cover (%): None

Estimated Bare Ground (%): 25-50%

Estimated Litter Depth (inches): None

Average Vegetation Height (inches): 6-12

Dominant Plant Species (Common Names): Corn

Invasive Plant Species (Common Names):

Representative Photo(s):





Field Data Sheet





Field Data Sheet

Notes :

Do you need to report observations of another open field?

Yes



Field Data Sheet

Corresponding Point ID(s): 15.1

Anthropogenic Disturbance/Management Practices: Farm Equipment Noise

Primary Open Field Cover Type: Row Cropland (Active)

Estimated Grass Cover (%): None

Estimated Forb Cover (%): 25-50%

Estimated Woody Vegetation Cover (%): None

Estimated Bare Ground (%): 25-50%

Estimated Litter Depth (inches): None

Average Vegetation Height (inches): 6-12

Dominant Plant Species (Common Names): Corn

Invasive Plant Species (Common Names):

Representative Photo(s):





Field Data Sheet





Field Data Sheet

Notes :

Do you need to report observations of another open field?

Yes



Field Data Sheet

Corresponding Point ID(s): 16

Anthropogenic Disturbance/Management Practices: Farm Equipment Noise

Primary Open Field Cover Type: Row Cropland (Active)

Estimated Grass Cover (%): None

Estimated Forb Cover (%): 10-25%

Estimated Woody Vegetation Cover (%): None

Estimated Bare Ground (%): 50-90%

Estimated Litter Depth (inches): None

Average Vegetation Height (inches): 6-12

Dominant Plant Species (Common Names): Corn

Invasive Plant Species (Common Names):

Representative Photo(s):





Field Data Sheet





Field Data Sheet

Notes :

Do you need to report observations of another open field?

Yes



Field Data Sheet

Corresponding Point ID(s): 17

Anthropogenic Disturbance/Management Practices: Farm Equipment Noise

Primary Open Field Cover Type: Row Cropland (Active)

Estimated Grass Cover (%): None

Estimated Forb Cover (%): 10-25%

Estimated Woody Vegetation Cover (%): None

Estimated Bare Ground (%): 50-90%

Estimated Litter Depth (inches): None

Average Vegetation Height (inches): 6-12

Dominant Plant Species (Common Names): Corn

Invasive Plant Species (Common Names):

Representative Photo(s):





Field Data Sheet





Field Data Sheet

Notes :

Do you need to report observations of another open field?

No



Field Data Sheet

Weather Conditions at End of Survey

Temperature (°F): 71

Wind Speed (mph): 1 - 3 (Light Air; Smoke drifts)

Wind Direction: E

Cloud Cover: Overcast (90-100%)

Visibility: Good (10+ miles; clear)

Precipitation: None (Clear)

Weather Notes:

Were there any notable weather events/changes during the survey? No

Bird Observation Summary

Were any Endangered/Threatened Species observed?

No

Were any Species of Special Concern observed?

No

Were probable, possible, or confirmed breeding behaviors observed for any Listed Species (Endangered/Threatened/Special Concern)?

No

Were there additional photos documenting birds observed, habitat conditions, and/or other features of interest?

No

Additional Photo(s):

Were any alternate point count survey locations used due to access or visual constraints?

Yes

Alternate Point Count Survey Locations: 15.1



Field Data Sheet

**Incidental bird species observed outside of timed point count surveys
(Alpha Codes or Common Names):**

Overall Survey Notes:

Unable to survey 16.1 and 16.2 due to time



Field Data Sheet

Breeding Bird Survey

Submitted By: abutler@edrdpc.com

Submitted Time: June 29, 2023 12:08 PM

Survey Information

Project Name: Hoffman Falls

Survey Date: June 21, 2023

Surveyor Name: Anna Butler

Points Surveyed: 50-64

Survey Start Time: 05:19

Survey End Time: 10:22

Weather Conditions at Start of Survey

Temperature (°F): 52

Wind Speed (mph): 0 - 1 (Calm; Smoke rises vertically)

Wind Direction: NNE

Cloud Cover: Mostly Clear (10-25%)

Visibility: Good (10+ miles; clear)

Precipitation: None (Clear)

Weather Notes:



Field Data Sheet

Open Field Condition Observations

Corresponding Point ID(s): 51

Anthropogenic Disturbance/Management Practices: Traffic Noise

Primary Open Field Cover Type: Row Cropland (Fallow)

Estimated Grass Cover (%): 10-25%

Estimated Forb Cover (%): 25-50%

Estimated Woody Vegetation Cover (%): None

Estimated Bare Ground (%): 10-25%

Estimated Litter Depth (inches): None

Average Vegetation Height (inches): 6-12

Dominant Plant Species (Common Names): Dogbane, grass, buttercup

Invasive Plant Species (Common Names):

Representative Photo(s):





Field Data Sheet





Field Data Sheet

Notes :

Do you need to report observations of another open field?

Yes



Field Data Sheet

Corresponding Point ID(s): 50.1

Anthropogenic Disturbance/Management Practices: Traffic Noise

Primary Open Field Cover Type: Field Cropland (including hay, wheat, oats, etc.)

Estimated Grass Cover (%): 25-50%

Estimated Forb Cover (%): 25-50%

Estimated Woody Vegetation Cover (%): None

Estimated Bare Ground (%): None

Estimated Litter Depth (inches): 0-1"

Average Vegetation Height (inches): 12-18

Dominant Plant Species (Common Names): Grass, bedstraw, buttercup, strawberry

Invasive Plant Species (Common Names):

Representative Photo(s):





Field Data Sheet





Field Data Sheet

Notes :

Do you need to report observations of another open field?

Yes



Field Data Sheet

Corresponding Point ID(s): 50

Anthropogenic Disturbance/Management Practices: Traffic Noise

Primary Open Field Cover Type: Field Cropland (including hay, wheat, oats, etc.)

Estimated Grass Cover (%): 25-50%

Estimated Forb Cover (%): 25-50%

Estimated Woody Vegetation Cover (%): None

Estimated Bare Ground (%): None

Estimated Litter Depth (inches): 0-1"

Average Vegetation Height (inches): 12-18

Dominant Plant Species (Common Names): Bedstraw, buttercup, daisy, red clover, grass

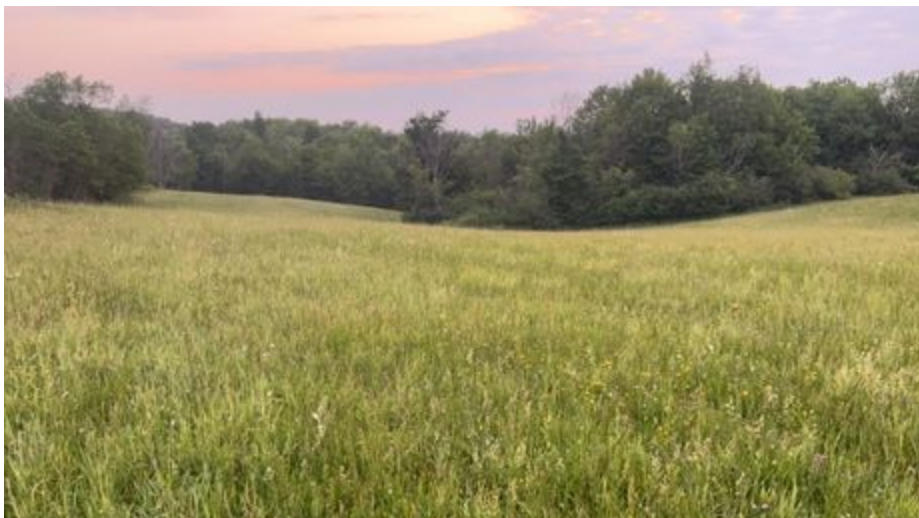
Invasive Plant Species (Common Names):

Representative Photo(s):





Field Data Sheet





Field Data Sheet

Notes :

Do you need to report observations of another open field?

Yes



Field Data Sheet

Corresponding Point ID(s): 52

Anthropogenic Disturbance/Management Practices: Traffic Noise

Primary Open Field Cover Type: Row Cropland (Active)

Estimated Grass Cover (%): 1-10%

Estimated Forb Cover (%): 25-50%

Estimated Woody Vegetation Cover (%): None

Estimated Bare Ground (%): 25-50%

Estimated Litter Depth (inches): None

Average Vegetation Height (inches): 4-6

Dominant Plant Species (Common Names): Soy

Invasive Plant Species (Common Names):

Representative Photo(s):





Field Data Sheet





Field Data Sheet

Notes :

Do you need to report observations of another open field?

Yes



Field Data Sheet

Corresponding Point ID(s): 53

Anthropogenic Disturbance/Management Practices: Traffic Noise

Primary Open Field Cover Type: Row Cropland (Active)

Estimated Grass Cover (%): 1-10%

Estimated Forb Cover (%): 25-50%

Estimated Woody Vegetation Cover (%): 25-50%

Estimated Bare Ground (%): None

Estimated Litter Depth (inches): None

Average Vegetation Height (inches): 4-6

Dominant Plant Species (Common Names): Soy

Invasive Plant Species (Common Names):

Representative Photo(s):





Field Data Sheet





Field Data Sheet

Notes :

Do you need to report observations of another open field?

Yes



Field Data Sheet

Corresponding Point ID(s): 58

Anthropogenic Disturbance/Management Practices: Farm Equipment Noise

Primary Open Field Cover Type: Field Cropland (including hay, wheat, oats, etc.)

Estimated Grass Cover (%): 50-90%

Estimated Forb Cover (%): 25-50%

Estimated Woody Vegetation Cover (%): None

Estimated Bare Ground (%): None

Estimated Litter Depth (inches): 0-1"

Average Vegetation Height (inches): 12-18

Dominant Plant Species (Common Names): Grass, alfalfa, red clover, common milkweed

Invasive Plant Species (Common Names):

Representative Photo(s):





Field Data Sheet





Field Data Sheet

Notes :

Do you need to report observations of another open field?

Yes



Field Data Sheet

Corresponding Point ID(s): 57

Anthropogenic Disturbance/Management Practices: Traffic Noise

Primary Open Field Cover Type: Field Cropland (including hay, wheat, oats, etc.)

Estimated Grass Cover (%): 25-50%

Estimated Forb Cover (%): 25-50%

Estimated Woody Vegetation Cover (%): None

Estimated Bare Ground (%): None

Estimated Litter Depth (inches): 0-1"

Average Vegetation Height (inches): 12-18

Dominant Plant Species (Common Names): Grass, clover

Invasive Plant Species (Common Names):

Representative Photo(s):





Field Data Sheet





Field Data Sheet

Notes :

Do you need to report observations of another open field?

Yes



Field Data Sheet

Corresponding Point ID(s): 56

Anthropogenic Disturbance/Management Practices: Traffic Noise

Primary Open Field Cover Type: Row Cropland (Active)

Estimated Grass Cover (%): None

Estimated Forb Cover (%): 25-50%

Estimated Woody Vegetation Cover (%): None

Estimated Bare Ground (%): 25-50%

Estimated Litter Depth (inches): None

Average Vegetation Height (inches): 6-12

Dominant Plant Species (Common Names): Corn

Invasive Plant Species (Common Names):

Representative Photo(s):





Field Data Sheet





Field Data Sheet

Notes :

Do you need to report observations of another open field?

Yes



Field Data Sheet

Corresponding Point ID(s): 60 (alt)

Anthropogenic Disturbance/Management Practices: Traffic Noise

Primary Open Field Cover Type: Field Cropland (including hay, wheat, oats, etc.)

Estimated Grass Cover (%): 25-50%

Estimated Forb Cover (%): 25-50%

Estimated Woody Vegetation Cover (%): None

Estimated Bare Ground (%): None

Estimated Litter Depth (inches): 0-1"

Average Vegetation Height (inches): 12-18

Dominant Plant Species (Common Names): Grass, red clover

Invasive Plant Species (Common Names):

Representative Photo(s):





Field Data Sheet





Field Data Sheet

Notes :

Alt point used due to electric fence

Do you need to report observations of another open field?

Yes



Field Data Sheet

Corresponding Point ID(s): 55

Anthropogenic Disturbance/Management Practices: Traffic Noise

Primary Open Field Cover Type: Row Cropland (Active)

Estimated Grass Cover (%): None

Estimated Forb Cover (%): 10-25%

Estimated Woody Vegetation Cover (%): None

Estimated Bare Ground (%): 50-90%

Estimated Litter Depth (inches): 0-1"

Average Vegetation Height (inches): 4-6

Dominant Plant Species (Common Names): Corn

Invasive Plant Species (Common Names):

Representative Photo(s):





Field Data Sheet





Field Data Sheet

Notes :

Do you need to report observations of another open field?

Yes



Field Data Sheet

Corresponding Point ID(s): 59

Anthropogenic Disturbance/Management Practices: Traffic Noise

Primary Open Field Cover Type: Pastureland

Estimated Grass Cover (%): 50-90%

Estimated Forb Cover (%): 25-50%

Estimated Woody Vegetation Cover (%): None

Estimated Bare Ground (%): None

Estimated Litter Depth (inches): 0-1"

Average Vegetation Height (inches): 6-12

Dominant Plant Species (Common Names): Grass, clover

Invasive Plant Species (Common Names):

Representative Photo(s):





Field Data Sheet





Field Data Sheet

Notes :

Do you need to report observations of another open field?

Yes



Field Data Sheet

Corresponding Point ID(s): 62

Anthropogenic Disturbance/Management Practices: Traffic Noise

Primary Open Field Cover Type: Pastureland

Estimated Grass Cover (%): 25-50%

Estimated Forb Cover (%): 10-25%

Estimated Woody Vegetation Cover (%): None

Estimated Bare Ground (%): 1-10%

Estimated Litter Depth (inches): 0-1"

Average Vegetation Height (inches): 6-12

Dominant Plant Species (Common Names): Grass, dandelion

Invasive Plant Species (Common Names):

Representative Photo(s):





Field Data Sheet





Field Data Sheet

Notes :

Do you need to report observations of another open field?

Yes



Field Data Sheet

Corresponding Point ID(s): 61

Anthropogenic Disturbance/Management Practices: Traffic Noise

Primary Open Field Cover Type: Field Cropland (including hay, wheat, oats, etc.)

Estimated Grass Cover (%): 25-50%

Estimated Forb Cover (%): 25-50%

Estimated Woody Vegetation Cover (%): 1-10%

Estimated Bare Ground (%): None

Estimated Litter Depth (inches): 0-1"

Average Vegetation Height (inches): 12-18

Dominant Plant Species (Common Names): Grass, clover

Invasive Plant Species (Common Names): Honeysuckle

Representative Photo(s):





Field Data Sheet





Field Data Sheet

Notes :

Do you need to report observations of another open field?

Yes



Field Data Sheet

Corresponding Point ID(s): 64

Anthropogenic Disturbance/Management Practices: Traffic Noise

Primary Open Field Cover Type: Row Cropland (Active)

Estimated Grass Cover (%): 1-10%

Estimated Forb Cover (%): 1-10%

Estimated Woody Vegetation Cover (%): None

Estimated Bare Ground (%): 90-100%

Estimated Litter Depth (inches): None

Average Vegetation Height (inches): 4-6

Dominant Plant Species (Common Names): Grass, dandelion

Invasive Plant Species (Common Names):

Representative Photo(s):





Field Data Sheet





Field Data Sheet

Notes :

Do you need to report observations of another open field?

Yes



Field Data Sheet

Corresponding Point ID(s): 63

Anthropogenic Disturbance/Management Practices: Traffic Noise

Primary Open Field Cover Type: Row Cropland (Active)

Estimated Grass Cover (%): 25-50%

Estimated Forb Cover (%): 25-50%

Estimated Woody Vegetation Cover (%): None

Estimated Bare Ground (%): 1-10%

Estimated Litter Depth (inches): None

Average Vegetation Height (inches): 6-12

Dominant Plant Species (Common Names): Corn, grass

Invasive Plant Species (Common Names):

Representative Photo(s):





Field Data Sheet





Field Data Sheet

Notes :

Do you need to report observations of another open field?

Yes



Field Data Sheet

Corresponding Point ID(s): 54

Anthropogenic Disturbance/Management Practices: Traffic Noise

Primary Open Field Cover Type: Row Cropland (Active)

Estimated Grass Cover (%): 25-50%

Estimated Forb Cover (%): 1-10%

Estimated Woody Vegetation Cover (%): None

Estimated Bare Ground (%): 25-50%

Estimated Litter Depth (inches): None

Average Vegetation Height (inches): 6-12

Dominant Plant Species (Common Names): Grass

Invasive Plant Species (Common Names):

Representative Photo(s):





Field Data Sheet





Field Data Sheet

Notes :

Do you need to report observations of another open field?

No



Field Data Sheet

Weather Conditions at End of Survey

Temperature (°F): 69

Wind Speed (mph): 1 – 3 (Light Air; Smoke drifts)

Wind Direction: SE

Cloud Cover: Partly Cloudy (25% - 50%)

Visibility: Good (10+ miles; clear)

Precipitation: None (Clear)

Weather Notes:

Were there any notable weather events/changes during the survey? No

Bird Observation Summary

Were any Endangered/Threatened Species observed?

No

Were any Species of Special Concern observed?

No

Were probable, possible, or confirmed breeding behaviors observed for any Listed Species (Endangered/Threatened/Special Concern)?

No

Were there additional photos documenting birds observed, habitat conditions, and/or other features of interest?

No

Additional Photo(s):

Were any alternate point count survey locations used due to access or visual constraints?

Yes

Alternate Point Count Survey Locations: 60 on road



Field Data Sheet

**Incidental bird species observed outside of timed point count surveys
(Alpha Codes or Common Names):**

Overall Survey Notes:



Field Data Sheet

Breeding Bird Survey

Submitted By: abutler@edrdpc.com

Submitted Time: June 29, 2023 12:09 PM

Survey Information

Project Name: Hoffman Falls

Survey Date: June 22, 2023

Surveyor Name: Anna Butler

Points Surveyed: 65-80

Survey Start Time: 05:17

Survey End Time: 10:27

Weather Conditions at Start of Survey

Temperature (°F): 50

Wind Speed (mph): 1 - 3 (Light Air; Smoke drifts)

Wind Direction: NNE

Cloud Cover: None (Clear)

Visibility: Good (10+ miles; clear)

Precipitation: None (Clear)

Weather Notes:



Field Data Sheet

Open Field Condition Observations

Corresponding Point ID(s): 65

Anthropogenic Disturbance/Management Practices: Traffic Noise

Primary Open Field Cover Type: Row Cropland (Active)

Estimated Grass Cover (%): 1-10%

Estimated Forb Cover (%): 25-50%

Estimated Woody Vegetation Cover (%): None

Estimated Bare Ground (%): 25-50%

Estimated Litter Depth (inches): None

Average Vegetation Height (inches): 4-6

Dominant Plant Species (Common Names): Soy

Invasive Plant Species (Common Names):

Representative Photo(s):





Field Data Sheet





Field Data Sheet

Notes :

Do you need to report observations of another open field?

Yes



Field Data Sheet

Corresponding Point ID(s): 66

Anthropogenic Disturbance/Management Practices: Traffic Noise

Primary Open Field Cover Type: Row Cropland (Active)

Estimated Grass Cover (%): 10-25%

Estimated Forb Cover (%): 50-90%

Estimated Woody Vegetation Cover (%): None

Estimated Bare Ground (%): 1-10%

Estimated Litter Depth (inches): 0-1"

Average Vegetation Height (inches): 12-18

Dominant Plant Species (Common Names): Soy, grass, common milkweed

Invasive Plant Species (Common Names):

Representative Photo(s):





Field Data Sheet





Field Data Sheet

Notes :

Do you need to report observations of another open field?

Yes



Field Data Sheet

Corresponding Point ID(s): 67

Anthropogenic Disturbance/Management Practices: Traffic Noise

Primary Open Field Cover Type: Row Cropland (Active)

Estimated Grass Cover (%): 1-10%

Estimated Forb Cover (%): 25-50%

Estimated Woody Vegetation Cover (%): None

Estimated Bare Ground (%): 25-50%

Estimated Litter Depth (inches): None

Average Vegetation Height (inches): 4-6

Dominant Plant Species (Common Names): Soy

Invasive Plant Species (Common Names):

Representative Photo(s):





Field Data Sheet





Field Data Sheet

Notes :

Do you need to report observations of another open field?

Yes



Field Data Sheet

Corresponding Point ID(s): 68

Anthropogenic Disturbance/Management Practices: Traffic Noise

Primary Open Field Cover Type: Row Cropland (Active)

Estimated Grass Cover (%): 1-10%

Estimated Forb Cover (%): 25-50%

Estimated Woody Vegetation Cover (%): None

Estimated Bare Ground (%): 25-50%

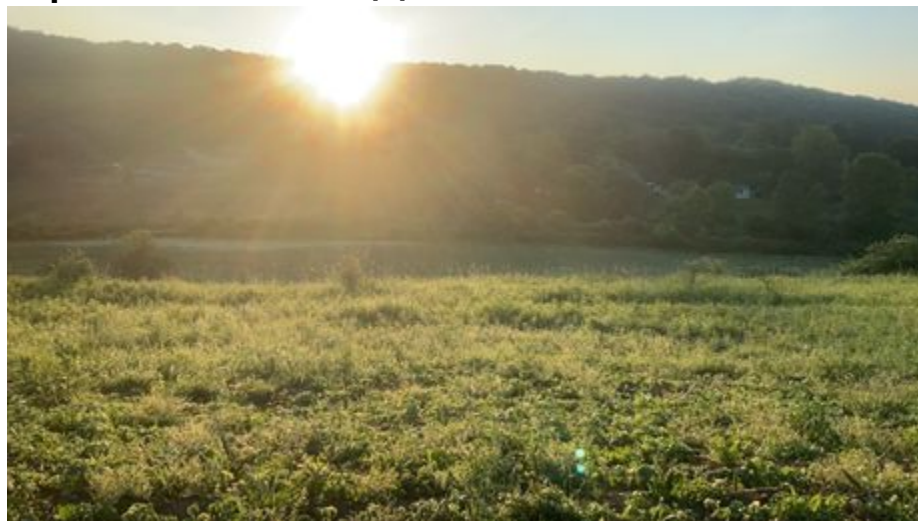
Estimated Litter Depth (inches): None

Average Vegetation Height (inches): 4-6

Dominant Plant Species (Common Names): Soy

Invasive Plant Species (Common Names):

Representative Photo(s):





Field Data Sheet





Field Data Sheet

Notes :

Do you need to report observations of another open field?

Yes



Field Data Sheet

Corresponding Point ID(s): 76

Anthropogenic Disturbance/Management Practices: Traffic Noise

Primary Open Field Cover Type: Field Cropland (including hay, wheat, oats, etc.)

Estimated Grass Cover (%): 25-50%

Estimated Forb Cover (%): 25-50%

Estimated Woody Vegetation Cover (%): None

Estimated Bare Ground (%): None

Estimated Litter Depth (inches): 0-1"

Average Vegetation Height (inches): 12-18

Dominant Plant Species (Common Names): Grass, alfalfa, clover

Invasive Plant Species (Common Names):

Representative Photo(s):





Field Data Sheet





Field Data Sheet

Notes :

Do you need to report observations of another open field?

Yes



Field Data Sheet

Corresponding Point ID(s): 76.1

Anthropogenic Disturbance/Management Practices: None notable

Primary Open Field Cover Type: Successional Old Field

Estimated Grass Cover (%): 1-10%

Estimated Forb Cover (%): 50-90%

Estimated Woody Vegetation Cover (%): 1-10%

Estimated Bare Ground (%): None

Estimated Litter Depth (inches): 1-3"

Average Vegetation Height (inches): 42-48

Dominant Plant Species (Common Names): Dogbane, goldenrod

Invasive Plant Species (Common Names): Honeysuckle

Representative Photo(s):





Field Data Sheet





Field Data Sheet

Notes :

Do you need to report observations of another open field?

Yes



Field Data Sheet

Corresponding Point ID(s): 69

Anthropogenic Disturbance/Management Practices: Traffic Noise

Primary Open Field Cover Type: Field Cropland (including hay, wheat, oats, etc.)

Estimated Grass Cover (%): 25-50%

Estimated Forb Cover (%): 25-50%

Estimated Woody Vegetation Cover (%): None

Estimated Bare Ground (%): None

Estimated Litter Depth (inches): 0-1"

Average Vegetation Height (inches): 6-12

Dominant Plant Species (Common Names): Grass, clover, dandelion, alfalfa

Invasive Plant Species (Common Names):

Representative Photo(s):





Field Data Sheet





Field Data Sheet

Notes :

Do you need to report observations of another open field?

Yes



Field Data Sheet

Corresponding Point ID(s): 70

Anthropogenic Disturbance/Management Practices: Traffic Noise

Primary Open Field Cover Type: Row Cropland (Active)

Estimated Grass Cover (%): 10-25%

Estimated Forb Cover (%): 25-50%

Estimated Woody Vegetation Cover (%): None

Estimated Bare Ground (%): 25-50%

Estimated Litter Depth (inches): None

Average Vegetation Height (inches): 12-18

Dominant Plant Species (Common Names): Corn, grass

Invasive Plant Species (Common Names):

Representative Photo(s):





Field Data Sheet





Field Data Sheet

Notes :

Do you need to report observations of another open field?

Yes



Field Data Sheet

Corresponding Point ID(s): 71

Anthropogenic Disturbance/Management Practices: Traffic Noise

Primary Open Field Cover Type: Field Cropland (including hay, wheat, oats, etc.)

Estimated Grass Cover (%): 25-50%

Estimated Forb Cover (%): 25-50%

Estimated Woody Vegetation Cover (%): None

Estimated Bare Ground (%): None

Estimated Litter Depth (inches): 0-1"

Average Vegetation Height (inches): 12-18

Dominant Plant Species (Common Names): Grass, alfalfa

Invasive Plant Species (Common Names):

Representative Photo(s):





Field Data Sheet





Field Data Sheet

Notes :

Do you need to report observations of another open field?

Yes



Field Data Sheet

Corresponding Point ID(s): 77

Anthropogenic Disturbance/Management Practices: Logging Noise

Primary Open Field Cover Type: Field Cropland (including hay, wheat, oats, etc.)

Estimated Grass Cover (%): 50-90%

Estimated Forb Cover (%): 10-25%

Estimated Woody Vegetation Cover (%): None

Estimated Bare Ground (%): 1-10%

Estimated Litter Depth (inches): 0-1"

Average Vegetation Height (inches): 2-4

Dominant Plant Species (Common Names): Grass, dandelion, clover

Invasive Plant Species (Common Names):

Representative Photo(s):





Field Data Sheet





Field Data Sheet

Notes :

Do you need to report observations of another open field?

Yes



Field Data Sheet

Corresponding Point ID(s): 79

Anthropogenic Disturbance/Management Practices: Logging Noise

Primary Open Field Cover Type: Row Cropland (Active)

Estimated Grass Cover (%): 1-10%

Estimated Forb Cover (%): 25-50%

Estimated Woody Vegetation Cover (%): None

Estimated Bare Ground (%): 25-50%

Estimated Litter Depth (inches): None

Average Vegetation Height (inches): 12-18

Dominant Plant Species (Common Names): Corn, grass

Invasive Plant Species (Common Names):

Representative Photo(s):





Field Data Sheet





Field Data Sheet

Notes :

Do you need to report observations of another open field?

Yes



Field Data Sheet

Corresponding Point ID(s): 80

Anthropogenic Disturbance/Management Practices: Traffic Noise

Primary Open Field Cover Type: Field Cropland (including hay, wheat, oats, etc.)

Estimated Grass Cover (%): 25-50%

Estimated Forb Cover (%): 25-50%

Estimated Woody Vegetation Cover (%): None

Estimated Bare Ground (%): None

Estimated Litter Depth (inches): 0-1"

Average Vegetation Height (inches): 12-18

Dominant Plant Species (Common Names): Grass, clover

Invasive Plant Species (Common Names):

Representative Photo(s):





Field Data Sheet





Field Data Sheet

Notes :

Do you need to report observations of another open field?

Yes



Field Data Sheet

Corresponding Point ID(s): 78

Anthropogenic Disturbance/Management Practices: Traffic Noise

Primary Open Field Cover Type: Field Cropland (including hay, wheat, oats, etc.)

Estimated Grass Cover (%): 25-50%

Estimated Forb Cover (%): 25-50%

Estimated Woody Vegetation Cover (%): None

Estimated Bare Ground (%): 1-10%

Estimated Litter Depth (inches): 0-1"

Average Vegetation Height (inches): 2-4

Dominant Plant Species (Common Names): Grass, dandelion, clover

Invasive Plant Species (Common Names):

Representative Photo(s):





Field Data Sheet





Field Data Sheet

Notes :

Do you need to report observations of another open field?

Yes



Field Data Sheet

Corresponding Point ID(s): 75

Anthropogenic Disturbance/Management Practices: Farm Equipment Noise

Primary Open Field Cover Type: Field Cropland (including hay, wheat, oats, etc.)

Estimated Grass Cover (%): None

Estimated Forb Cover (%): 90-100%

Estimated Woody Vegetation Cover (%): None

Estimated Bare Ground (%): None

Estimated Litter Depth (inches): 0-1"

Average Vegetation Height (inches): 12-18

Dominant Plant Species (Common Names): Alfalfa

Invasive Plant Species (Common Names):

Representative Photo(s):





Field Data Sheet





Field Data Sheet

Notes :

Do you need to report observations of another open field?

Yes



Field Data Sheet

Corresponding Point ID(s): 73

Anthropogenic Disturbance/Management Practices: Farm Equipment In Use

Primary Open Field Cover Type: Row Cropland (Fallow)

Estimated Grass Cover (%): 10-25%

Estimated Forb Cover (%): 10-25%

Estimated Woody Vegetation Cover (%): None

Estimated Bare Ground (%): 25-50%

Estimated Litter Depth (inches): None

Average Vegetation Height (inches): 12-18

Dominant Plant Species (Common Names): Grass, alfalfa

Invasive Plant Species (Common Names):

Representative Photo(s):





Field Data Sheet





Field Data Sheet

Notes :

Haying across the road

Do you need to report observations of another open field?

Yes



Field Data Sheet

Corresponding Point ID(s): 72

Anthropogenic Disturbance/Management Practices: Farm Equipment In Use

Primary Open Field Cover Type: Row Cropland (Fallow)

Estimated Grass Cover (%): 10-25%

Estimated Forb Cover (%): 10-25%

Estimated Woody Vegetation Cover (%): None

Estimated Bare Ground (%): 25-50%

Estimated Litter Depth (inches): None

Average Vegetation Height (inches): 12-18

Dominant Plant Species (Common Names): Grass, alfalfa

Invasive Plant Species (Common Names): Yellow rocket

Representative Photo(s):





Field Data Sheet





Field Data Sheet

Notes :

Haying across road

Do you need to report observations of another open field?

Yes



Field Data Sheet

Corresponding Point ID(s): 74

Anthropogenic Disturbance/Management Practices: Farm Equipment In Use

Primary Open Field Cover Type: Field Cropland (including hay, wheat, oats, etc.)

Estimated Grass Cover (%): None

Estimated Forb Cover (%): 90-100%

Estimated Woody Vegetation Cover (%): None

Estimated Bare Ground (%): None

Estimated Litter Depth (inches): 0-1"

Average Vegetation Height (inches): 12-18

Dominant Plant Species (Common Names): Alfalfa

Invasive Plant Species (Common Names):

Representative Photo(s):





Field Data Sheet





Field Data Sheet

Notes :

Haying and trucks in use

Do you need to report observations of another open field?

No



Field Data Sheet

Weather Conditions at End of Survey

Temperature (°F): 66

Wind Speed (mph): 4 – 7 (Light Breeze; Leaves rustle)

Wind Direction: ESE

Cloud Cover: Mostly Cloudy (50% - 90%)

Visibility: Good (10+ miles; clear)

Precipitation: None (Clear)

Weather Notes:

Were there any notable weather events/changes during the survey? No

Bird Observation Summary

Were any Endangered/Threatened Species observed?

No

Were any Species of Special Concern observed?

No

Were probable, possible, or confirmed breeding behaviors observed for any Listed Species (Endangered/Threatened/Special Concern)?

No

Were there additional photos documenting birds observed, habitat conditions, and/or other features of interest?

No

Additional Photo(s):

Were any alternate point count survey locations used due to access or visual constraints?

No

Alternate Point Count Survey Locations:



Field Data Sheet

**Incidental bird species observed outside of timed point count surveys
(Alpha Codes or Common Names):**

RTHA

Overall Survey Notes:



Field Data Sheet

Breeding Bird Survey

Submitted By: fsimeone@edrdpc.com

Submitted Time: June 28, 2023 3:35 PM

Survey Information

Project Name: Hoffman Falls

Survey Date: June 28, 2023

Surveyor Name: Frank Simeone

Points Surveyed: 1-14, 15.1, 16-18

Survey Start Time: 04:59

Survey End Time: 10:20

Weather Conditions at Start of Survey

Temperature (°F): 64

Wind Speed (mph): 4 – 7 (Light Breeze; Leaves rustle)

Wind Direction: W

Cloud Cover: Overcast (90-100%)

Visibility: Fair (0.62-10 miles; mist or light/moderate precipitation)

Precipitation: Fog

Weather Notes:



Field Data Sheet

Open Field Condition Observations

Corresponding Point ID(s): 12

Anthropogenic Disturbance/Management Practices: None notable

Primary Open Field Cover Type: Field Cropland (including hay, wheat, oats, etc.)

Estimated Grass Cover (%): 50-90%

Estimated Forb Cover (%): 10-25%

Estimated Woody Vegetation Cover (%): None

Estimated Bare Ground (%): None

Estimated Litter Depth (inches): 0-1"

Average Vegetation Height (inches): 12-18

Dominant Plant Species (Common Names): Grass, clover, white campion, bird foot trefoil

Invasive Plant Species (Common Names):

Representative Photo(s):





Field Data Sheet





Field Data Sheet

Notes :

Do you need to report observations of another open field?

Yes



Field Data Sheet

Corresponding Point ID(s): 13

Anthropogenic Disturbance/Management Practices: None notable

Primary Open Field Cover Type: Row Cropland (Active)

Estimated Grass Cover (%): 50-90%

Estimated Forb Cover (%): None

Estimated Woody Vegetation Cover (%): None

Estimated Bare Ground (%): 25-50%

Estimated Litter Depth (inches): None

Average Vegetation Height (inches): 12-18

Dominant Plant Species (Common Names): Corn

Invasive Plant Species (Common Names):

Representative Photo(s):





Field Data Sheet





Field Data Sheet

Notes :

Do you need to report observations of another open field?

Yes



Field Data Sheet

Corresponding Point ID(s): 11

Anthropogenic Disturbance/Management Practices: None notable

Primary Open Field Cover Type: Row Cropland (Active)

Estimated Grass Cover (%): 50-90%

Estimated Forb Cover (%): None

Estimated Woody Vegetation Cover (%): None

Estimated Bare Ground (%): 25-50%

Estimated Litter Depth (inches): None

Average Vegetation Height (inches): 18-24

Dominant Plant Species (Common Names): Corn

Invasive Plant Species (Common Names):

Representative Photo(s):





Field Data Sheet





Field Data Sheet

Notes :

Do you need to report observations of another open field?

Yes



Field Data Sheet

Corresponding Point ID(s): 9

Anthropogenic Disturbance/Management Practices: None notable

Primary Open Field Cover Type: Row Cropland (Active)

Estimated Grass Cover (%): 50-90%

Estimated Forb Cover (%): 1-10%

Estimated Woody Vegetation Cover (%): None

Estimated Bare Ground (%): 10-25%

Estimated Litter Depth (inches): None

Average Vegetation Height (inches): 24-30

Dominant Plant Species (Common Names): Corn, milkweed, grass

Invasive Plant Species (Common Names):

Representative Photo(s):





Field Data Sheet





Field Data Sheet

Notes :

Do you need to report observations of another open field?

Yes



Field Data Sheet

Corresponding Point ID(s): 8

Anthropogenic Disturbance/Management Practices: None notable

Primary Open Field Cover Type: Row Cropland (Active)

Estimated Grass Cover (%): 50-90%

Estimated Forb Cover (%): None

Estimated Woody Vegetation Cover (%): None

Estimated Bare Ground (%): 10-25%

Estimated Litter Depth (inches): None

Average Vegetation Height (inches): 18-24

Dominant Plant Species (Common Names): Corn

Invasive Plant Species (Common Names):

Representative Photo(s):





Field Data Sheet





Field Data Sheet

Notes :

Do you need to report observations of another open field?

Yes



Field Data Sheet

Corresponding Point ID(s): 7

Anthropogenic Disturbance/Management Practices: None notable

Primary Open Field Cover Type: Row Cropland (Active)

Estimated Grass Cover (%): 50-90%

Estimated Forb Cover (%): None

Estimated Woody Vegetation Cover (%): None

Estimated Bare Ground (%): 10-25%

Estimated Litter Depth (inches): None

Average Vegetation Height (inches): 24-30

Dominant Plant Species (Common Names): Corn

Invasive Plant Species (Common Names):

Representative Photo(s):





Field Data Sheet





Field Data Sheet

Notes :

Do you need to report observations of another open field?

Yes



Field Data Sheet

Corresponding Point ID(s): 7.1

Anthropogenic Disturbance/Management Practices: ATV/Other Vehicle Noise

Primary Open Field Cover Type: Row Cropland (Active)

Estimated Grass Cover (%): 50-90%

Estimated Forb Cover (%): None

Estimated Woody Vegetation Cover (%): None

Estimated Bare Ground (%): 10-25%

Estimated Litter Depth (inches): None

Average Vegetation Height (inches): 24-30

Dominant Plant Species (Common Names): Corn

Invasive Plant Species (Common Names):

Representative Photo(s):





Field Data Sheet





Field Data Sheet

Notes :

Do you need to report observations of another open field?

Yes



Field Data Sheet

Corresponding Point ID(s): 10

Anthropogenic Disturbance/Management Practices: None notable

Primary Open Field Cover Type: Row Cropland (Active)

Estimated Grass Cover (%): 50-90%

Estimated Forb Cover (%): None

Estimated Woody Vegetation Cover (%): None

Estimated Bare Ground (%): 10-25%

Estimated Litter Depth (inches): None

Average Vegetation Height (inches): 24-30

Dominant Plant Species (Common Names): Corn

Invasive Plant Species (Common Names):

Representative Photo(s):





Field Data Sheet





Field Data Sheet

Notes :

Do you need to report observations of another open field?

Yes



Field Data Sheet

Corresponding Point ID(s): 15.1

Anthropogenic Disturbance/Management Practices: ATV/Other Vehicle Noise

Primary Open Field Cover Type: Row Cropland (Active)

Estimated Grass Cover (%): 50-90%

Estimated Forb Cover (%): 1-10%

Estimated Woody Vegetation Cover (%): 1-10%

Estimated Bare Ground (%): 1-10%

Estimated Litter Depth (inches): None

Average Vegetation Height (inches): 18-24

Dominant Plant Species (Common Names): Corn, grass, bedstraw, clover, milkweed, daisy, buttercup,

Invasive Plant Species (Common Names):

Representative Photo(s):





Field Data Sheet





Field Data Sheet

Notes :

Do you need to report observations of another open field?

Yes



Field Data Sheet

Corresponding Point ID(s): 16

Anthropogenic Disturbance/Management Practices: ATV/Other Vehicle Noise

Primary Open Field Cover Type: Row Cropland (Active)

Estimated Grass Cover (%): 50-90%

Estimated Forb Cover (%): None

Estimated Woody Vegetation Cover (%): None

Estimated Bare Ground (%): 10-25%

Estimated Litter Depth (inches): None

Average Vegetation Height (inches): 24-30

Dominant Plant Species (Common Names): Corn

Invasive Plant Species (Common Names):

Representative Photo(s):





Field Data Sheet





Field Data Sheet

Notes :

Do you need to report observations of another open field?

Yes



Field Data Sheet

Corresponding Point ID(s): 17

Anthropogenic Disturbance/Management Practices: ATV/Other Vehicle Noise

Primary Open Field Cover Type: Row Cropland (Active)

Estimated Grass Cover (%): 50-90%

Estimated Forb Cover (%): None

Estimated Woody Vegetation Cover (%): None

Estimated Bare Ground (%): 10-25%

Estimated Litter Depth (inches): None

Average Vegetation Height (inches): 24-30

Dominant Plant Species (Common Names): Corn

Invasive Plant Species (Common Names):

Representative Photo(s):





Field Data Sheet





Field Data Sheet

Notes :

Do you need to report observations of another open field?

Yes



Field Data Sheet

Corresponding Point ID(s): 16.2

Anthropogenic Disturbance/Management Practices: None notable

Primary Open Field Cover Type: Row Cropland (Active)

Estimated Grass Cover (%): 50-90%

Estimated Forb Cover (%): None

Estimated Woody Vegetation Cover (%): None

Estimated Bare Ground (%): 10-25%

Estimated Litter Depth (inches): None

Average Vegetation Height (inches): 24-30

Dominant Plant Species (Common Names): Corn

Invasive Plant Species (Common Names):

Representative Photo(s):





Field Data Sheet





Field Data Sheet

Notes :

Do you need to report observations of another open field?

Yes



Field Data Sheet

Corresponding Point ID(s): 16.1

Anthropogenic Disturbance/Management Practices: ATV/Other Vehicle Noise

Primary Open Field Cover Type: Pastureland

Estimated Grass Cover (%): 50-90%

Estimated Forb Cover (%): 10-25%

Estimated Woody Vegetation Cover (%): None

Estimated Bare Ground (%): None

Estimated Litter Depth (inches): 1-3"

Average Vegetation Height (inches): 30-36

Dominant Plant Species (Common Names): Grass, clover, buttercup

Invasive Plant Species (Common Names):

Representative Photo(s):

Notes :

Photos not taken on this date due to livestock and potential safety hazard.
Distracted by cattle appearing from the fog. Needed to look for potential bull

Do you need to report observations of another open field?

Yes



Field Data Sheet

Corresponding Point ID(s): 14

Anthropogenic Disturbance/Management Practices: None notable

Primary Open Field Cover Type: Row Cropland (Active)

Estimated Grass Cover (%): 50-90%

Estimated Forb Cover (%): None

Estimated Woody Vegetation Cover (%): None

Estimated Bare Ground (%): 1-10%

Estimated Litter Depth (inches): None

Average Vegetation Height (inches): 18-24

Dominant Plant Species (Common Names): Corn

Invasive Plant Species (Common Names):

Representative Photo(s):





Field Data Sheet





Field Data Sheet

Notes :

Do you need to report observations of another open field?

Yes



Field Data Sheet

Corresponding Point ID(s): 18

Anthropogenic Disturbance/Management Practices: ATV/Other Vehicle Noise

Primary Open Field Cover Type: Field Cropland (including hay, wheat, oats, etc.)

Estimated Grass Cover (%): 50-90%

Estimated Forb Cover (%): 10-25%

Estimated Woody Vegetation Cover (%): None

Estimated Bare Ground (%): None

Estimated Litter Depth (inches): 1-3"

Average Vegetation Height (inches): 42-48

Dominant Plant Species (Common Names): Grass, clover, birds foot trefoil, fleabane,

Invasive Plant Species (Common Names):

Representative Photo(s):





Field Data Sheet





Field Data Sheet

Notes :

Do you need to report observations of another open field?

Yes



Field Data Sheet

Corresponding Point ID(s): 1

Anthropogenic Disturbance/Management Practices: ATV/Other Vehicle Noise

Primary Open Field Cover Type: Row Cropland (Active)

Estimated Grass Cover (%): 50-90%

Estimated Forb Cover (%): None

Estimated Woody Vegetation Cover (%): None

Estimated Bare Ground (%): 10-25%

Estimated Litter Depth (inches): None

Average Vegetation Height (inches): 6-12

Dominant Plant Species (Common Names): Corn

Invasive Plant Species (Common Names):

Representative Photo(s):





Field Data Sheet





Field Data Sheet

Notes :

Do you need to report observations of another open field?

Yes



Field Data Sheet

Corresponding Point ID(s): 2

Anthropogenic Disturbance/Management Practices: None notable

Primary Open Field Cover Type: Row Cropland (Active)

Estimated Grass Cover (%): 50-90%

Estimated Forb Cover (%): None

Estimated Woody Vegetation Cover (%): None

Estimated Bare Ground (%): 10-25%

Estimated Litter Depth (inches): None

Average Vegetation Height (inches): 12-18

Dominant Plant Species (Common Names): Corn

Invasive Plant Species (Common Names):

Representative Photo(s):





Field Data Sheet





Field Data Sheet

Notes :

Do you need to report observations of another open field?

Yes



Field Data Sheet

Corresponding Point ID(s): 5

Anthropogenic Disturbance/Management Practices: ATV/Other Vehicle Noise

Primary Open Field Cover Type: Row Cropland (Active)

Estimated Grass Cover (%): 50-90%

Estimated Forb Cover (%): None

Estimated Woody Vegetation Cover (%): None

Estimated Bare Ground (%): 10-25%

Estimated Litter Depth (inches): None

Average Vegetation Height (inches): 12-18

Dominant Plant Species (Common Names): Corn

Invasive Plant Species (Common Names):

Representative Photo(s):





Field Data Sheet





Field Data Sheet

Notes :

Do you need to report observations of another open field?

Yes



Field Data Sheet

Corresponding Point ID(s): 6

Anthropogenic Disturbance/Management Practices: ATV/Other Vehicle Noise

Primary Open Field Cover Type: Field Cropland (including hay, wheat, oats, etc.)

Estimated Grass Cover (%): 50-90%

Estimated Forb Cover (%): 10-25%

Estimated Woody Vegetation Cover (%): None

Estimated Bare Ground (%): None

Estimated Litter Depth (inches): None

Average Vegetation Height (inches): 12-18

Dominant Plant Species (Common Names): Grass, clover, dandelion,

Invasive Plant Species (Common Names):

Representative Photo(s):





Field Data Sheet





Field Data Sheet

Notes :

Do you need to report observations of another open field?

Yes



Field Data Sheet

Corresponding Point ID(s): 4

Anthropogenic Disturbance/Management Practices: None notable

Primary Open Field Cover Type: Row Cropland (Active)

Estimated Grass Cover (%): 50-90%

Estimated Forb Cover (%): None

Estimated Woody Vegetation Cover (%): None

Estimated Bare Ground (%): 10-25%

Estimated Litter Depth (inches): None

Average Vegetation Height (inches): 12-18

Dominant Plant Species (Common Names): Corn

Invasive Plant Species (Common Names):

Representative Photo(s):





Field Data Sheet





Field Data Sheet

Notes :

Do you need to report observations of another open field?

Yes



Field Data Sheet

Corresponding Point ID(s): 3

Anthropogenic Disturbance/Management Practices: None notable

Primary Open Field Cover Type: Row Cropland (Active)

Estimated Grass Cover (%): 50-90%

Estimated Forb Cover (%): None

Estimated Woody Vegetation Cover (%): None

Estimated Bare Ground (%): 10-25%

Estimated Litter Depth (inches): None

Average Vegetation Height (inches): 12-18

Dominant Plant Species (Common Names): Corn

Invasive Plant Species (Common Names):

Representative Photo(s):





Field Data Sheet





Field Data Sheet

Notes :

Do you need to report observations of another open field?

No



Field Data Sheet

Weather Conditions at End of Survey

Temperature (°F): 64

Wind Speed (mph): 8 – 12 (Gentle Breeze; Leaves and Small twigs in constant motion)

Wind Direction: NW

Cloud Cover: Overcast (90-100%)

Visibility: Fair (0.62-10 miles; mist or light/moderate precipitation)

Precipitation: Rain (Intermittent/Light)

Weather Notes:

Were there any notable weather events/changes during the survey? Yes

Bird Observation Summary

Were any Endangered/Threatened Species observed?

No

Were any Species of Special Concern observed?

No

Were probable, possible, or confirmed breeding behaviors observed for any Listed Species (Endangered/Threatened/Special Concern)?

No

Were there additional photos documenting birds observed, habitat conditions, and/or other features of interest?

No

Additional Photo(s):

Were any alternate point count survey locations used due to access or visual constraints?

Yes



Field Data Sheet

Alternate Point Count Survey Locations: 15.1, not 15

**Incidental bird species observed outside of timed point count surveys
(Alpha Codes or Common Names):**

HOSP

Overall Survey Notes:



Field Data Sheet

Breeding Bird Survey

Submitted By: abutler@edrdpc.com

Submitted Time: June 29, 2023 12:09 PM

Survey Information

Project Name: Hoffman Falls

Survey Date: June 28, 2023

Surveyor Name: Anna Butler

Points Surveyed: 35-49

Survey Start Time: 05:23

Survey End Time: 10:25

Weather Conditions at Start of Survey

Temperature (°F): 64

Wind Speed (mph): 1 - 3 (Light Air; Smoke drifts)

Wind Direction: NW

Cloud Cover: Overcast (90-100%)

Visibility: Fair (0.62-10 miles; mist or light/moderate precipitation)

Precipitation: Rain (Intermittent/Light)

Weather Notes: Light drizzle and fog on distant hills



Field Data Sheet

Open Field Condition Observations

Corresponding Point ID(s): 49

Anthropogenic Disturbance/Management Practices: None notable

Primary Open Field Cover Type: Row Cropland (Active)

Estimated Grass Cover (%): 1-10%

Estimated Forb Cover (%): 25-50%

Estimated Woody Vegetation Cover (%): None

Estimated Bare Ground (%): 25-50%

Estimated Litter Depth (inches):

Average Vegetation Height (inches): 6-12

Dominant Plant Species (Common Names): Corn

Invasive Plant Species (Common Names):

Representative Photo(s):





Field Data Sheet





Field Data Sheet

Notes :

Do you need to report observations of another open field?

Yes



Field Data Sheet

Corresponding Point ID(s): 46

Anthropogenic Disturbance/Management Practices: None notable

Primary Open Field Cover Type: Field Cropland (including hay, wheat, oats, etc.)

Estimated Grass Cover (%): 25-50%

Estimated Forb Cover (%): 25-50%

Estimated Woody Vegetation Cover (%): None

Estimated Bare Ground (%): None

Estimated Litter Depth (inches): 0-1"

Average Vegetation Height (inches): 12-18

Dominant Plant Species (Common Names): Red clover, white clover, grass, bedstraw, buttercup

Invasive Plant Species (Common Names):

Representative Photo(s):





Field Data Sheet





Field Data Sheet

Notes :

Do you need to report observations of another open field?

Yes



Field Data Sheet

Corresponding Point ID(s): 42

Anthropogenic Disturbance/Management Practices: None notable

Primary Open Field Cover Type: Field Cropland (including hay, wheat, oats, etc.)

Estimated Grass Cover (%): 25-50%

Estimated Forb Cover (%): 25-50%

Estimated Woody Vegetation Cover (%): None

Estimated Bare Ground (%): None

Estimated Litter Depth (inches): 0-1"

Average Vegetation Height (inches): 6-12

Dominant Plant Species (Common Names): Grass, white clover, red clover, buttercup

Invasive Plant Species (Common Names):

Representative Photo(s):





Field Data Sheet





Field Data Sheet

Notes :

Do you need to report observations of another open field?

Yes



Field Data Sheet

Corresponding Point ID(s): 43

Anthropogenic Disturbance/Management Practices: Traffic Noise

Primary Open Field Cover Type: Field Cropland (including hay, wheat, oats, etc.)

Estimated Grass Cover (%): 25-50%

Estimated Forb Cover (%): 25-50%

Estimated Woody Vegetation Cover (%): None

Estimated Bare Ground (%): None

Estimated Litter Depth (inches): 0-1"

Average Vegetation Height (inches): 6-12

Dominant Plant Species (Common Names): Grass, red clover, white clover, bedstraw

Invasive Plant Species (Common Names):

Representative Photo(s):





Field Data Sheet





Field Data Sheet

Notes :

Do you need to report observations of another open field?

Yes



Field Data Sheet

Corresponding Point ID(s): 44

Anthropogenic Disturbance/Management Practices: None notable

Primary Open Field Cover Type: Field Cropland (including hay, wheat, oats, etc.)

Estimated Grass Cover (%): 25-50%

Estimated Forb Cover (%): 25-50%

Estimated Woody Vegetation Cover (%): None

Estimated Bare Ground (%): None

Estimated Litter Depth (inches): 0-1"

Average Vegetation Height (inches): 6-12

Dominant Plant Species (Common Names): Grass, red clover, white clover, bedstraw

Invasive Plant Species (Common Names):

Representative Photo(s):





Field Data Sheet





Field Data Sheet

Notes :

Do you need to report observations of another open field?

Yes



Field Data Sheet

Corresponding Point ID(s): 45

Anthropogenic Disturbance/Management Practices: None notable

Primary Open Field Cover Type: Row Cropland (Active)

Estimated Grass Cover (%): 1-10%

Estimated Forb Cover (%): 50-90%

Estimated Woody Vegetation Cover (%): None

Estimated Bare Ground (%): 10-25%

Estimated Litter Depth (inches): None

Average Vegetation Height (inches): 6-12

Dominant Plant Species (Common Names): Corn

Invasive Plant Species (Common Names):

Representative Photo(s):





Field Data Sheet





Field Data Sheet

Notes :

Do you need to report observations of another open field?

Yes



Field Data Sheet

Corresponding Point ID(s): 47

Anthropogenic Disturbance/Management Practices: Traffic Noise

Primary Open Field Cover Type: Field Cropland (including hay, wheat, oats, etc.)

Estimated Grass Cover (%): 25-50%

Estimated Forb Cover (%): 25-50%

Estimated Woody Vegetation Cover (%): None

Estimated Bare Ground (%): None

Estimated Litter Depth (inches): 0-1"

Average Vegetation Height (inches): 6-12

Dominant Plant Species (Common Names): Grass, dandelion

Invasive Plant Species (Common Names):

Representative Photo(s):





Field Data Sheet





Field Data Sheet

Notes :

Do you need to report observations of another open field?

Yes



Field Data Sheet

Corresponding Point ID(s): 48

Anthropogenic Disturbance/Management Practices: None notable

Primary Open Field Cover Type: Row Cropland (Active)

Estimated Grass Cover (%): 1-10%

Estimated Forb Cover (%): 10-25%

Estimated Woody Vegetation Cover (%): None

Estimated Bare Ground (%): 25-50%

Estimated Litter Depth (inches): None

Average Vegetation Height (inches): 12-18

Dominant Plant Species (Common Names): Corn

Invasive Plant Species (Common Names):

Representative Photo(s):





Field Data Sheet





Field Data Sheet

Notes :

Do you need to report observations of another open field?

Yes



Field Data Sheet

Corresponding Point ID(s): 35.1

Anthropogenic Disturbance/Management Practices: Traffic Noise

Primary Open Field Cover Type: Field Cropland (including hay, wheat, oats, etc.)

Estimated Grass Cover (%): 25-50%

Estimated Forb Cover (%): 25-50%

Estimated Woody Vegetation Cover (%): None

Estimated Bare Ground (%): None

Estimated Litter Depth (inches): 0-1"

Average Vegetation Height (inches): 12-18

Dominant Plant Species (Common Names): Grass, red clover, bedstraw

Invasive Plant Species (Common Names):

Representative Photo(s):





Field Data Sheet





Field Data Sheet

Notes :

Do you need to report observations of another open field?

Yes



Field Data Sheet

Corresponding Point ID(s): 35

Anthropogenic Disturbance/Management Practices: Traffic Noise

Primary Open Field Cover Type: Field Cropland (including hay, wheat, oats, etc.)

Estimated Grass Cover (%): 25-50%

Estimated Forb Cover (%): 25-50%

Estimated Woody Vegetation Cover (%): None

Estimated Bare Ground (%): None

Estimated Litter Depth (inches): 0-1"

Average Vegetation Height (inches): 6-12

Dominant Plant Species (Common Names): Grass, red clover, buttercup

Invasive Plant Species (Common Names):

Representative Photo(s):





Field Data Sheet





Field Data Sheet

Notes :

Do you need to report observations of another open field?

Yes



Field Data Sheet

Corresponding Point ID(s): 41

Anthropogenic Disturbance/Management Practices: Traffic Noise

Primary Open Field Cover Type: Row Cropland (Active)

Estimated Grass Cover (%): 10-25%

Estimated Forb Cover (%): 10-25%

Estimated Woody Vegetation Cover (%): None

Estimated Bare Ground (%): 50-90%

Estimated Litter Depth (inches): None

Average Vegetation Height (inches): 6-12

Dominant Plant Species (Common Names): Corn

Invasive Plant Species (Common Names):

Representative Photo(s):





Field Data Sheet





Field Data Sheet

Notes :

Do you need to report observations of another open field?

Yes



Field Data Sheet

Corresponding Point ID(s): 40

Anthropogenic Disturbance/Management Practices: None notable

Primary Open Field Cover Type: Field Cropland (including hay, wheat, oats, etc.)

Estimated Grass Cover (%): None

Estimated Forb Cover (%): 25-50%

Estimated Woody Vegetation Cover (%): None

Estimated Bare Ground (%): 10-25%

Estimated Litter Depth (inches): None

Average Vegetation Height (inches): 6-12

Dominant Plant Species (Common Names): Alfalfa, yellow rocket

Invasive Plant Species (Common Names):

Representative Photo(s):





Field Data Sheet





Field Data Sheet

Notes :

Do you need to report observations of another open field?

Yes



Field Data Sheet

Corresponding Point ID(s): 39

Anthropogenic Disturbance/Management Practices: None notable

Primary Open Field Cover Type: Field Cropland (including hay, wheat, oats, etc.)

Estimated Grass Cover (%): 25-50%

Estimated Forb Cover (%): 25-50%

Estimated Woody Vegetation Cover (%): None

Estimated Bare Ground (%): 1-10%

Estimated Litter Depth (inches): 0-1"

Average Vegetation Height (inches): 12-18

Dominant Plant Species (Common Names): Grass, red clover

Invasive Plant Species (Common Names):

Representative Photo(s):





Field Data Sheet





Field Data Sheet

Notes :

Do you need to report observations of another open field?

Yes



Field Data Sheet

Corresponding Point ID(s): 38

Anthropogenic Disturbance/Management Practices: Traffic Noise

Primary Open Field Cover Type: Row Cropland (Active)

Estimated Grass Cover (%): None

Estimated Forb Cover (%): 25-50%

Estimated Woody Vegetation Cover (%): None

Estimated Bare Ground (%): 25-50%

Estimated Litter Depth (inches): None

Average Vegetation Height (inches): 12-18

Dominant Plant Species (Common Names): Corn

Invasive Plant Species (Common Names):

Representative Photo(s):





Field Data Sheet





Field Data Sheet

Notes :

Do you need to report observations of another open field?

Yes



Field Data Sheet

Corresponding Point ID(s): 36

Anthropogenic Disturbance/Management Practices: None notable

Primary Open Field Cover Type: Field Cropland (including hay, wheat, oats, etc.)

Estimated Grass Cover (%): 50-90%

Estimated Forb Cover (%): 10-25%

Estimated Woody Vegetation Cover (%): None

Estimated Bare Ground (%): 10-25%

Estimated Litter Depth (inches): None

Average Vegetation Height (inches): 12-18

Dominant Plant Species (Common Names): Grass, red clover

Invasive Plant Species (Common Names):

Representative Photo(s):





Field Data Sheet





Field Data Sheet

Notes :

Do you need to report observations of another open field?

Yes



Field Data Sheet

Corresponding Point ID(s): 37

Anthropogenic Disturbance/Management Practices: None notable

Primary Open Field Cover Type: Row Cropland (Active)

Estimated Grass Cover (%): 1-10%

Estimated Forb Cover (%): 25-50%

Estimated Woody Vegetation Cover (%): None

Estimated Bare Ground (%): 25-50%

Estimated Litter Depth (inches): None

Average Vegetation Height (inches): 12-18

Dominant Plant Species (Common Names): Corn

Invasive Plant Species (Common Names):

Representative Photo(s):





Field Data Sheet





Field Data Sheet

Notes :

Do you need to report observations of another open field?

No



Field Data Sheet

Weather Conditions at End of Survey

Temperature (°F): 62

Wind Speed (mph): 4 – 7 (Light Breeze; Leaves rustle)

Wind Direction: WNW

Cloud Cover: Overcast (90-100%)

Visibility: Fair (0.62-10 miles; mist or light/moderate precipitation)

Precipitation: Rain (Intermittent/Light)

Weather Notes: Very light rain

Were there any notable weather events/changes during the survey? No

Bird Observation Summary

Were any Endangered/Threatened Species observed?

No

Were any Species of Special Concern observed?

No

Were probable, possible, or confirmed breeding behaviors observed for any Listed Species (Endangered/Threatened/Special Concern)?

No

Were there additional photos documenting birds observed, habitat conditions, and/or other features of interest?

No

Additional Photo(s):

Were any alternate point count survey locations used due to access or visual constraints?

No

Alternate Point Count Survey Locations:



Field Data Sheet

**Incidental bird species observed outside of timed point count surveys
(Alpha Codes or Common Names):**

Overall Survey Notes:



Field Data Sheet

Breeding Bird Survey

Submitted By: abutler@edrdpc.com

Submitted Time: July 14, 2023 9:21 AM

Survey Information

Project Name: Hoffman Falls

Survey Date: July 7, 2023

Surveyor Name: Anna Butler

Points Surveyed: 51-68

Survey Start Time: 05:13

Survey End Time: 10:10

Weather Conditions at Start of Survey

Temperature (°F): 66

Wind Speed (mph): 1 - 3 (Light Air; Smoke drifts)

Wind Direction: ENE

Cloud Cover: Partly Cloudy (25% - 50%)

Visibility: Good (10+ miles; clear)

Precipitation: None (Clear)

Weather Notes:



Field Data Sheet

Open Field Condition Observations

Corresponding Point ID(s): 54

Anthropogenic Disturbance/Management Practices: Traffic Noise

Primary Open Field Cover Type: Field Cropland (including hay, wheat, oats, etc.)

Estimated Grass Cover (%): 50-90%

Estimated Forb Cover (%): 10-25%

Estimated Woody Vegetation Cover (%): None

Estimated Bare Ground (%): None

Estimated Litter Depth (inches): 0-1"

Average Vegetation Height (inches): 12-18

Dominant Plant Species (Common Names): Grass

Invasive Plant Species (Common Names):

Representative Photo(s):





Field Data Sheet





Field Data Sheet

Notes :

Do you need to report observations of another open field?

Yes



Field Data Sheet

Corresponding Point ID(s): 51

Anthropogenic Disturbance/Management Practices: Traffic Noise

Primary Open Field Cover Type: Row Cropland (Active)

Estimated Grass Cover (%): 25-50%

Estimated Forb Cover (%): 25-50%

Estimated Woody Vegetation Cover (%): None

Estimated Bare Ground (%): 1-10%

Estimated Litter Depth (inches): None

Average Vegetation Height (inches): 18-24

Dominant Plant Species (Common Names): Grass, soy, dogbane

Invasive Plant Species (Common Names):

Representative Photo(s):





Field Data Sheet





Field Data Sheet

Notes :

Do you need to report observations of another open field?

Yes



Field Data Sheet

Corresponding Point ID(s): 60

Anthropogenic Disturbance/Management Practices: Traffic Noise

Primary Open Field Cover Type: Pastureland

Estimated Grass Cover (%): 25-50%

Estimated Forb Cover (%): 25-50%

Estimated Woody Vegetation Cover (%): None

Estimated Bare Ground (%): None

Estimated Litter Depth (inches): 0-1"

Average Vegetation Height (inches): 6-12

Dominant Plant Species (Common Names): Grass, red clover, dandelion

Invasive Plant Species (Common Names):

Representative Photo(s):





Field Data Sheet





Field Data Sheet

Notes :

Do you need to report observations of another open field?

Yes



Field Data Sheet

Corresponding Point ID(s): 59

Anthropogenic Disturbance/Management Practices: Traffic Noise

Primary Open Field Cover Type: Pastureland

Estimated Grass Cover (%): 25-50%

Estimated Forb Cover (%): 25-50%

Estimated Woody Vegetation Cover (%): None

Estimated Bare Ground (%): None

Estimated Litter Depth (inches): 0-1"

Average Vegetation Height (inches): 6-12

Dominant Plant Species (Common Names): Grass, clover

Invasive Plant Species (Common Names):

Representative Photo(s):





Field Data Sheet





Field Data Sheet

Notes :

Do you need to report observations of another open field?

Yes



Field Data Sheet

Corresponding Point ID(s): 58

Anthropogenic Disturbance/Management Practices: Farm Equipment Noise

Primary Open Field Cover Type: Field Cropland (including hay, wheat, oats, etc.)

Estimated Grass Cover (%): 25-50%

Estimated Forb Cover (%): 25-50%

Estimated Woody Vegetation Cover (%): None

Estimated Bare Ground (%): None

Estimated Litter Depth (inches): 0-1"

Average Vegetation Height (inches): 12-18

Dominant Plant Species (Common Names): Grass, goldenrod, clover

Invasive Plant Species (Common Names):

Representative Photo(s):





Field Data Sheet





Field Data Sheet

Notes :

Do you need to report observations of another open field?

Yes



Field Data Sheet

Corresponding Point ID(s): 57

Anthropogenic Disturbance/Management Practices: Traffic Noise

Primary Open Field Cover Type: Field Cropland (including hay, wheat, oats, etc.)

Estimated Grass Cover (%): 25-50%

Estimated Forb Cover (%): 25-50%

Estimated Woody Vegetation Cover (%): None

Estimated Bare Ground (%): None

Estimated Litter Depth (inches): 0-1"

Average Vegetation Height (inches): 12-18

Dominant Plant Species (Common Names): Grass, clover

Invasive Plant Species (Common Names):

Representative Photo(s):





Field Data Sheet





Field Data Sheet

Notes :

Do you need to report observations of another open field?

Yes



Field Data Sheet

Corresponding Point ID(s): 56

Anthropogenic Disturbance/Management Practices: Traffic Noise

Primary Open Field Cover Type: Row Cropland (Active)

Estimated Grass Cover (%): None

Estimated Forb Cover (%): 25-50%

Estimated Woody Vegetation Cover (%): None

Estimated Bare Ground (%): 25-50%

Estimated Litter Depth (inches): None

Average Vegetation Height (inches): 30-36

Dominant Plant Species (Common Names): Corn

Invasive Plant Species (Common Names):

Representative Photo(s):





Field Data Sheet





Field Data Sheet

Notes :

Do you need to report observations of another open field?

Yes



Field Data Sheet

Corresponding Point ID(s): 55

Anthropogenic Disturbance/Management Practices: Traffic Noise

Primary Open Field Cover Type: Row Cropland (Active)

Estimated Grass Cover (%): None

Estimated Forb Cover (%): 25-50%

Estimated Woody Vegetation Cover (%): None

Estimated Bare Ground (%): 25-50%

Estimated Litter Depth (inches): 0-1"

Average Vegetation Height (inches): 30-36

Dominant Plant Species (Common Names): Corn

Invasive Plant Species (Common Names):

Representative Photo(s):





Field Data Sheet





Field Data Sheet

Notes :

Do you need to report observations of another open field?

Yes



Field Data Sheet

Corresponding Point ID(s): 52

Anthropogenic Disturbance/Management Practices: Traffic Noise

Primary Open Field Cover Type: Row Cropland (Active)

Estimated Grass Cover (%): 1-10%

Estimated Forb Cover (%): 50-90%

Estimated Woody Vegetation Cover (%): None

Estimated Bare Ground (%): 1-10%

Estimated Litter Depth (inches): None

Average Vegetation Height (inches): 12-18

Dominant Plant Species (Common Names): Soy

Invasive Plant Species (Common Names):

Representative Photo(s):





Field Data Sheet





Field Data Sheet

Notes :

Do you need to report observations of another open field?

Yes



Field Data Sheet

Corresponding Point ID(s): 53

Anthropogenic Disturbance/Management Practices: Traffic Noise

Primary Open Field Cover Type: Row Cropland (Active)

Estimated Grass Cover (%): None

Estimated Forb Cover (%): 25-50%

Estimated Woody Vegetation Cover (%): None

Estimated Bare Ground (%): 25-50%

Estimated Litter Depth (inches): None

Average Vegetation Height (inches): 12-18

Dominant Plant Species (Common Names): Soy

Invasive Plant Species (Common Names):

Representative Photo(s):





Field Data Sheet





Field Data Sheet

Notes :

Do you need to report observations of another open field?

Yes



Field Data Sheet

Corresponding Point ID(s): 63

Anthropogenic Disturbance/Management Practices: Traffic Noise

Primary Open Field Cover Type: Row Cropland (Active)

Estimated Grass Cover (%): 10-25%

Estimated Forb Cover (%): 25-50%

Estimated Woody Vegetation Cover (%): None

Estimated Bare Ground (%): 1-10%

Estimated Litter Depth (inches): 0-1"

Average Vegetation Height (inches): 36-42

Dominant Plant Species (Common Names): Corn

Invasive Plant Species (Common Names):

Representative Photo(s):





Field Data Sheet





Field Data Sheet

Notes :

Do you need to report observations of another open field?

Yes



Field Data Sheet

Corresponding Point ID(s): 62

Anthropogenic Disturbance/Management Practices: Traffic Noise

Primary Open Field Cover Type: Row Cropland (Active)

Estimated Grass Cover (%): 10-25%

Estimated Forb Cover (%): 25-50%

Estimated Woody Vegetation Cover (%): None

Estimated Bare Ground (%): 1-10%

Estimated Litter Depth (inches): 0-1"

Average Vegetation Height (inches): 36-42

Dominant Plant Species (Common Names): Corn

Invasive Plant Species (Common Names): Honeysuckle

Representative Photo(s):





Field Data Sheet





Field Data Sheet

Notes :

Do you need to report observations of another open field?

Yes



Field Data Sheet

Corresponding Point ID(s): 61

Anthropogenic Disturbance/Management Practices: Traffic Noise

Primary Open Field Cover Type: Field Cropland (including hay, wheat, oats, etc.)

Estimated Grass Cover (%): 50-90%

Estimated Forb Cover (%): 25-50%

Estimated Woody Vegetation Cover (%): None

Estimated Bare Ground (%): None

Estimated Litter Depth (inches): 0-1"

Average Vegetation Height (inches): 4-6

Dominant Plant Species (Common Names): Grass, clover

Invasive Plant Species (Common Names):

Representative Photo(s):





Field Data Sheet





Field Data Sheet

Notes :

Do you need to report observations of another open field?

Yes



Field Data Sheet

Corresponding Point ID(s): 64

Anthropogenic Disturbance/Management Practices: Traffic Noise

Primary Open Field Cover Type: Field Cropland (including hay, wheat, oats, etc.)

Estimated Grass Cover (%): 10-25%

Estimated Forb Cover (%): 25-50%

Estimated Woody Vegetation Cover (%): None

Estimated Bare Ground (%): 10-25%

Estimated Litter Depth (inches): None

Average Vegetation Height (inches): 6-12

Dominant Plant Species (Common Names): Alfalfa, grass

Invasive Plant Species (Common Names):

Representative Photo(s):





Field Data Sheet





Field Data Sheet

Notes :

Do you need to report observations of another open field?

Yes



Field Data Sheet

Corresponding Point ID(s): 65

Anthropogenic Disturbance/Management Practices: Farm Equipment In Use

Primary Open Field Cover Type: Row Cropland (Active)

Estimated Grass Cover (%): 10-25%

Estimated Forb Cover (%): 25-50%

Estimated Woody Vegetation Cover (%): 1-10%

Estimated Bare Ground (%): 1-10%

Estimated Litter Depth (inches): 0-1"

Average Vegetation Height (inches): 6-12

Dominant Plant Species (Common Names): Soy

Invasive Plant Species (Common Names):

Representative Photo(s):





Field Data Sheet





Field Data Sheet

Notes :

Tractor running uphill

Do you need to report observations of another open field?

Yes



Field Data Sheet

Corresponding Point ID(s): 66

Anthropogenic Disturbance/Management Practices: Traffic Noise

Primary Open Field Cover Type: Row Cropland (Active)

Estimated Grass Cover (%): 25-50%

Estimated Forb Cover (%): 25-50%

Estimated Woody Vegetation Cover (%): None

Estimated Bare Ground (%): 1-10%

Estimated Litter Depth (inches): 0-1"

Average Vegetation Height (inches): 12-18

Dominant Plant Species (Common Names): Grass, soy

Invasive Plant Species (Common Names):

Representative Photo(s):





Field Data Sheet





Field Data Sheet

Notes :

Do you need to report observations of another open field?

Yes



Field Data Sheet

Corresponding Point ID(s): 67

Anthropogenic Disturbance/Management Practices: Traffic Noise

Primary Open Field Cover Type: Row Cropland (Active)

Estimated Grass Cover (%): 1-10%

Estimated Forb Cover (%): 50-90%

Estimated Woody Vegetation Cover (%): None

Estimated Bare Ground (%): 25-50%

Estimated Litter Depth (inches): None

Average Vegetation Height (inches): 6-12

Dominant Plant Species (Common Names): Soy

Invasive Plant Species (Common Names):

Representative Photo(s):





Field Data Sheet





Field Data Sheet

Notes :

Do you need to report observations of another open field?

Yes



Field Data Sheet

Corresponding Point ID(s): 68

Anthropogenic Disturbance/Management Practices: Traffic Noise

Primary Open Field Cover Type: Row Cropland (Active)

Estimated Grass Cover (%): 1-10%

Estimated Forb Cover (%): 50-90%

Estimated Woody Vegetation Cover (%): None

Estimated Bare Ground (%): 10-25%

Estimated Litter Depth (inches): None

Average Vegetation Height (inches): 6-12

Dominant Plant Species (Common Names): Soy

Invasive Plant Species (Common Names):

Representative Photo(s):





Field Data Sheet





Field Data Sheet

Notes :

Do you need to report observations of another open field?

No



Field Data Sheet

Weather Conditions at End of Survey

Temperature (°F): 80

Wind Speed (mph): 1 – 3 (Light Air; Smoke drifts)

Wind Direction: WNW

Cloud Cover: Mostly Cloudy (50% - 90%)

Visibility: Good (10+ miles; clear)

Precipitation: None (Clear)

Weather Notes:

Were there any notable weather events/changes during the survey? No

Bird Observation Summary

Were any Endangered/Threatened Species observed?

No

Were any Species of Special Concern observed?

No

Were probable, possible, or confirmed breeding behaviors observed for any Listed Species (Endangered/Threatened/Special Concern)?

No

Were there additional photos documenting birds observed, habitat conditions, and/or other features of interest?

No

Additional Photo(s):

Were any alternate point count survey locations used due to access or visual constraints?

Yes

Alternate Point Count Survey Locations: Roadside 60



Field Data Sheet

**Incidental bird species observed outside of timed point count surveys
(Alpha Codes or Common Names):**

Overall Survey Notes:



Field Data Sheet

Breeding Bird Survey

Submitted By: fsimeone@edrdpc.com

Submitted Time: July 11, 2023 11:17 AM

Survey Information

Project Name: Hoffman Falls

Survey Date: July 11, 2023

Surveyor Name: Frank Simeone

Points Surveyed: 18-21, 24, 27-33, 33.1, 34

Survey Start Time: 05:03

Survey End Time: 09:48

Weather Conditions at Start of Survey

Temperature (°F): 63

Wind Speed (mph): 0 - 1 (Calm; Smoke rises vertically)

Wind Direction: N

Cloud Cover: Mostly Clear (10-25%)

Visibility: Good (10+ miles; clear)

Precipitation: None (Clear)

Weather Notes:



Field Data Sheet

Open Field Condition Observations

Corresponding Point ID(s): 32

Anthropogenic Disturbance/Management Practices: None notable

Primary Open Field Cover Type: Field Cropland (including hay, wheat, oats, etc.)

Estimated Grass Cover (%): 50-90%

Estimated Forb Cover (%): 10-25%

Estimated Woody Vegetation Cover (%): None

Estimated Bare Ground (%): None

Estimated Litter Depth (inches): 0-1"

Average Vegetation Height (inches): 12-18

Dominant Plant Species (Common Names): Grass, clover, daisy, bedstraw

Invasive Plant Species (Common Names):

Representative Photo(s):





Field Data Sheet





Field Data Sheet

Notes :

Do you need to report observations of another open field?

Yes



Field Data Sheet

Corresponding Point ID(s): 31

Anthropogenic Disturbance/Management Practices: None notable

Primary Open Field Cover Type: Field Cropland (including hay, wheat, oats, etc.)

Estimated Grass Cover (%): 50-90%

Estimated Forb Cover (%): 10-25%

Estimated Woody Vegetation Cover (%): None

Estimated Bare Ground (%): None

Estimated Litter Depth (inches): 0-1"

Average Vegetation Height (inches): 12-18

Dominant Plant Species (Common Names): Grass, clover, bedstraw, bird's foot trefoil, buttercup, wild thyme, rubus

Invasive Plant Species (Common Names):

Representative Photo(s):





Field Data Sheet





Field Data Sheet

Notes :

Do you need to report observations of another open field?

Yes



Field Data Sheet

Corresponding Point ID(s): 30

Anthropogenic Disturbance/Management Practices: None notable

Primary Open Field Cover Type: Field Cropland (including hay, wheat, oats, etc.)

Estimated Grass Cover (%): 90-100%

Estimated Forb Cover (%): None

Estimated Woody Vegetation Cover (%): None

Estimated Bare Ground (%): None

Estimated Litter Depth (inches): 0-1"

Average Vegetation Height (inches): 18-24

Dominant Plant Species (Common Names): Grass, clover, bedstraw, daisy, vetch,

Invasive Plant Species (Common Names):

Representative Photo(s):





Field Data Sheet





Field Data Sheet

Notes :

Do you need to report observations of another open field?

Yes



Field Data Sheet

Corresponding Point ID(s): 33

Anthropogenic Disturbance/Management Practices: None notable

Primary Open Field Cover Type: Field Cropland (including hay, wheat, oats, etc.)

Estimated Grass Cover (%): 50-90%

Estimated Forb Cover (%): 10-25%

Estimated Woody Vegetation Cover (%): None

Estimated Bare Ground (%): None

Estimated Litter Depth (inches): 0-1"

Average Vegetation Height (inches): 12-18

Dominant Plant Species (Common Names): Grass, clover, bedstraw, rubus, bird foot trefoil, dandelion

Invasive Plant Species (Common Names):

Representative Photo(s):





Field Data Sheet





Field Data Sheet

Notes :

Do you need to report observations of another open field?

Yes



Field Data Sheet

Corresponding Point ID(s): 34

Anthropogenic Disturbance/Management Practices: None notable

Primary Open Field Cover Type: Row Cropland (Active)

Estimated Grass Cover (%): 50-90%

Estimated Forb Cover (%): 25-50%

Estimated Woody Vegetation Cover (%): None

Estimated Bare Ground (%): None

Estimated Litter Depth (inches): 1-3"

Average Vegetation Height (inches): 30-36

Dominant Plant Species (Common Names): Corn, grass, alfalfa, buttercup

Invasive Plant Species (Common Names): Reed canary grass,

Representative Photo(s):





Field Data Sheet





Field Data Sheet

Notes :

Do you need to report observations of another open field?

Yes



Field Data Sheet

Corresponding Point ID(s): 28

Anthropogenic Disturbance/Management Practices: None notable

Primary Open Field Cover Type: Field Cropland (including hay, wheat, oats, etc.)

Estimated Grass Cover (%): 90-100%

Estimated Forb Cover (%): 1-10%

Estimated Woody Vegetation Cover (%): None

Estimated Bare Ground (%): None

Estimated Litter Depth (inches): None

Average Vegetation Height (inches): 24-30

Dominant Plant Species (Common Names): Alfalfa, grass, daisy,

Invasive Plant Species (Common Names):

Representative Photo(s):





Field Data Sheet





Field Data Sheet

Notes :

Do you need to report observations of another open field?

Yes



Field Data Sheet

Corresponding Point ID(s): 27

Anthropogenic Disturbance/Management Practices: None notable

Primary Open Field Cover Type: Field Cropland (including hay, wheat, oats, etc.)

Estimated Grass Cover (%): 90-100%

Estimated Forb Cover (%): 1-10%

Estimated Woody Vegetation Cover (%): None

Estimated Bare Ground (%): None

Estimated Litter Depth (inches): 0-1"

Average Vegetation Height (inches): 30-36

Dominant Plant Species (Common Names): Grass, alfalfa, daisy

Invasive Plant Species (Common Names):

Representative Photo(s):





Field Data Sheet





Field Data Sheet

Notes :

Do you need to report observations of another open field?

Yes



Field Data Sheet

Corresponding Point ID(s): 29

Anthropogenic Disturbance/Management Practices: None notable

Primary Open Field Cover Type: Field Cropland (including hay, wheat, oats, etc.)

Estimated Grass Cover (%): 90-100%

Estimated Forb Cover (%): 1-10%

Estimated Woody Vegetation Cover (%): None

Estimated Bare Ground (%): None

Estimated Litter Depth (inches): None

Average Vegetation Height (inches): 24-30

Dominant Plant Species (Common Names): Alfalfa, grass, daisy,

Invasive Plant Species (Common Names):

Representative Photo(s):





Field Data Sheet





Field Data Sheet

Notes :

Do you need to report observations of another open field?

Yes



Field Data Sheet

Corresponding Point ID(s): 33.3

Anthropogenic Disturbance/Management Practices: None notable

Primary Open Field Cover Type: Pastureland

Estimated Grass Cover (%): 50-90%

Estimated Forb Cover (%): 10-25%

Estimated Woody Vegetation Cover (%): None

Estimated Bare Ground (%): None

Estimated Litter Depth (inches): 0-1"

Average Vegetation Height (inches): 12-18

Dominant Plant Species (Common Names): Grass, clover, goldenrod, rubus,

Invasive Plant Species (Common Names):

Representative Photo(s):





Field Data Sheet





Field Data Sheet

Notes :

Alternate point used, 33.3

Do you need to report observations of another open field?

Yes



Field Data Sheet

Corresponding Point ID(s): 24

Anthropogenic Disturbance/Management Practices: None notable

Primary Open Field Cover Type: Successional Old Field

Estimated Grass Cover (%): 25-50%

Estimated Forb Cover (%): 10-25%

Estimated Woody Vegetation Cover (%): 10-25%

Estimated Bare Ground (%): None

Estimated Litter Depth (inches): 1-3"

Average Vegetation Height (inches): 18-24

Dominant Plant Species (Common Names): Dogwood, grass, clover, vetch, goldenrod, rubus, bedstraw

Invasive Plant Species (Common Names):

Representative Photo(s):





Field Data Sheet





Field Data Sheet

Notes :

Do you need to report observations of another open field?

Yes



Field Data Sheet

Corresponding Point ID(s): 18

Anthropogenic Disturbance/Management Practices: None notable

Primary Open Field Cover Type: Field Cropland (including hay, wheat, oats, etc.)

Estimated Grass Cover (%): 90-100%

Estimated Forb Cover (%): 1-10%

Estimated Woody Vegetation Cover (%): None

Estimated Bare Ground (%): None

Estimated Litter Depth (inches): 1-3"

Average Vegetation Height (inches): 42-48

Dominant Plant Species (Common Names): Grass, corn, clover

Invasive Plant Species (Common Names):

Representative Photo(s):





Field Data Sheet





Field Data Sheet

Notes :

Do you need to report observations of another open field?

Yes



Field Data Sheet

Corresponding Point ID(s): 19

Anthropogenic Disturbance/Management Practices: ATV/Other Vehicle Noise

Primary Open Field Cover Type: Row Cropland (Active)

Estimated Grass Cover (%): 1-10%

Estimated Forb Cover (%): 10-25%

Estimated Woody Vegetation Cover (%): None

Estimated Bare Ground (%): 50-90%

Estimated Litter Depth (inches): None

Average Vegetation Height (inches): 4-6

Dominant Plant Species (Common Names): Soybean, corn, dandelion,

Invasive Plant Species (Common Names):

Representative Photo(s):





Field Data Sheet





Field Data Sheet

Notes :

Do you need to report observations of another open field?

Yes



Field Data Sheet

Corresponding Point ID(s): 20

Anthropogenic Disturbance/Management Practices: ATV/Other Vehicle Noise

Primary Open Field Cover Type: Row Cropland (Active)

Estimated Grass Cover (%): 10-25%

Estimated Forb Cover (%): 25-50%

Estimated Woody Vegetation Cover (%): None

Estimated Bare Ground (%): 25-50%

Estimated Litter Depth (inches): None

Average Vegetation Height (inches): 4-6

Dominant Plant Species (Common Names): Soybean, grass, clover, vetch

Invasive Plant Species (Common Names):

Representative Photo(s):





Field Data Sheet





Field Data Sheet

Notes :

Do you need to report observations of another open field?

Yes



Field Data Sheet

Corresponding Point ID(s): 21

Anthropogenic Disturbance/Management Practices: None notable

Primary Open Field Cover Type: Row Cropland (Active)

Estimated Grass Cover (%): 25-50%

Estimated Forb Cover (%): 50-90%

Estimated Woody Vegetation Cover (%): None

Estimated Bare Ground (%): 1-10%

Estimated Litter Depth (inches): 0-1"

Average Vegetation Height (inches): 4-6

Dominant Plant Species (Common Names): Soybean, grass, daisy, vetch, dandelion

Invasive Plant Species (Common Names):

Representative Photo(s):





Field Data Sheet





Field Data Sheet

Notes :

Do you need to report observations of another open field?

No



Field Data Sheet

Weather Conditions at End of Survey

Temperature (°F): 70

Wind Speed (mph): 1 – 3 (Light Air; Smoke drifts)

Wind Direction: W

Cloud Cover: None (Clear)

Visibility: Good (10+ miles; clear)

Precipitation: None (Clear)

Weather Notes:

Were there any notable weather events/changes during the survey? No

Bird Observation Summary

Were any Endangered/Threatened Species observed?

No

Were any Species of Special Concern observed?

No

Were probable, possible, or confirmed breeding behaviors observed for any Listed Species (Endangered/Threatened/Special Concern)?

No

Were there additional photos documenting birds observed, habitat conditions, and/or other features of interest?

No

Additional Photo(s):

Were any alternate point count survey locations used due to access or visual constraints?

Yes

Alternate Point Count Survey Locations: 33.3, not 33.1



Field Data Sheet

**Incidental bird species observed outside of timed point count surveys
(Alpha Codes or Common Names):**

CLSW

Overall Survey Notes:



Field Data Sheet

Breeding Bird Survey

Submitted By: fsimeone@edrdpc.com

Submitted Time: July 12, 2023 11:45 AM

Survey Information

Project Name: Hoffman Falls

Survey Date: July 12, 2023

Surveyor Name: Frank Simeone

Points Surveyed: 7 Alt, 7.1, 8, 9 Alt, 10 Alt, 11 Alt, 12, 13 Alt, 5, 4, 3, 6, 15.1, 16 Alt, 17 Alt, 16.2 Alt, 16.1, 14, 1, 2

Survey Start Time: 05:06

Survey End Time: 10:09

Weather Conditions at Start of Survey

Temperature (°F): 61

Wind Speed (mph): 1 - 3 (Light Air; Smoke drifts)

Wind Direction: ENE

Cloud Cover: Partly Cloudy (25% - 50%)

Visibility: Good (10+ miles; clear)

Precipitation: None (Clear)

Weather Notes:



Field Data Sheet

Open Field Condition Observations

Corresponding Point ID(s): 7.1

Anthropogenic Disturbance/Management Practices: None notable

Primary Open Field Cover Type: Row Cropland (Active)

Estimated Grass Cover (%): 90-100%

Estimated Forb Cover (%): None

Estimated Woody Vegetation Cover (%): None

Estimated Bare Ground (%): 1-10%

Estimated Litter Depth (inches): None

Average Vegetation Height (inches): 48-54

Dominant Plant Species (Common Names): Corn

Invasive Plant Species (Common Names):

Representative Photo(s):





Field Data Sheet





Field Data Sheet

Notes :

Do you need to report observations of another open field?

Yes



Field Data Sheet

Corresponding Point ID(s): 7 Alt

Anthropogenic Disturbance/Management Practices: None notable

Primary Open Field Cover Type: Row Cropland (Active)

Estimated Grass Cover (%): 90-100%

Estimated Forb Cover (%): None

Estimated Woody Vegetation Cover (%): None

Estimated Bare Ground (%): 1-10%

Estimated Litter Depth (inches): None

Average Vegetation Height (inches): 48-54

Dominant Plant Species (Common Names): Corn

Invasive Plant Species (Common Names):

Representative Photo(s):





Field Data Sheet





Field Data Sheet

Notes :

Surveyed 7 Alternate due to corn height and to avoid damaging crop.

Do you need to report observations of another open field?

Yes



Field Data Sheet

Corresponding Point ID(s): 8

Anthropogenic Disturbance/Management Practices: None notable

Primary Open Field Cover Type: Row Cropland (Active)

Estimated Grass Cover (%): 90-100%

Estimated Forb Cover (%): None

Estimated Woody Vegetation Cover (%): None

Estimated Bare Ground (%):

Estimated Litter Depth (inches): None

Average Vegetation Height (inches): 42-48

Dominant Plant Species (Common Names): Corn

Invasive Plant Species (Common Names):

Representative Photo(s):





Field Data Sheet





Field Data Sheet

Notes :

Do you need to report observations of another open field?

Yes



Field Data Sheet

Corresponding Point ID(s): 9 Alt

Anthropogenic Disturbance/Management Practices: ATV/Other Vehicle Noise

Primary Open Field Cover Type: Row Cropland (Active)

Estimated Grass Cover (%): 90-100%

Estimated Forb Cover (%): None

Estimated Woody Vegetation Cover (%): None

Estimated Bare Ground (%): 1-10%

Estimated Litter Depth (inches): None

Average Vegetation Height (inches): 48-54

Dominant Plant Species (Common Names): Corn

Invasive Plant Species (Common Names):

Representative Photo(s):





Field Data Sheet





Field Data Sheet

Notes :

9 Alternate due to corn height and to avoid damaging crop.

Do you need to report observations of another open field?

Yes



Field Data Sheet

Corresponding Point ID(s): 10 Alt

Anthropogenic Disturbance/Management Practices: None notable

Primary Open Field Cover Type: Row Cropland (Active)

Estimated Grass Cover (%): 90-100%

Estimated Forb Cover (%): None

Estimated Woody Vegetation Cover (%): None

Estimated Bare Ground (%): 1-10%

Estimated Litter Depth (inches): 0-1"

Average Vegetation Height (inches): 48-54

Dominant Plant Species (Common Names): Corn

Invasive Plant Species (Common Names):

Representative Photo(s):





Field Data Sheet





Field Data Sheet

Notes :

10 Alternate due to corn height and to avoid damaging crop

Do you need to report observations of another open field?

Yes



Field Data Sheet

Corresponding Point ID(s): 11 Alt

Anthropogenic Disturbance/Management Practices: ATV/Other Vehicle Noise

Primary Open Field Cover Type: Row Cropland (Active)

Estimated Grass Cover (%): 90-100%

Estimated Forb Cover (%): None

Estimated Woody Vegetation Cover (%): None

Estimated Bare Ground (%): 1-10%

Estimated Litter Depth (inches): None

Average Vegetation Height (inches): 42-48

Dominant Plant Species (Common Names): Corn

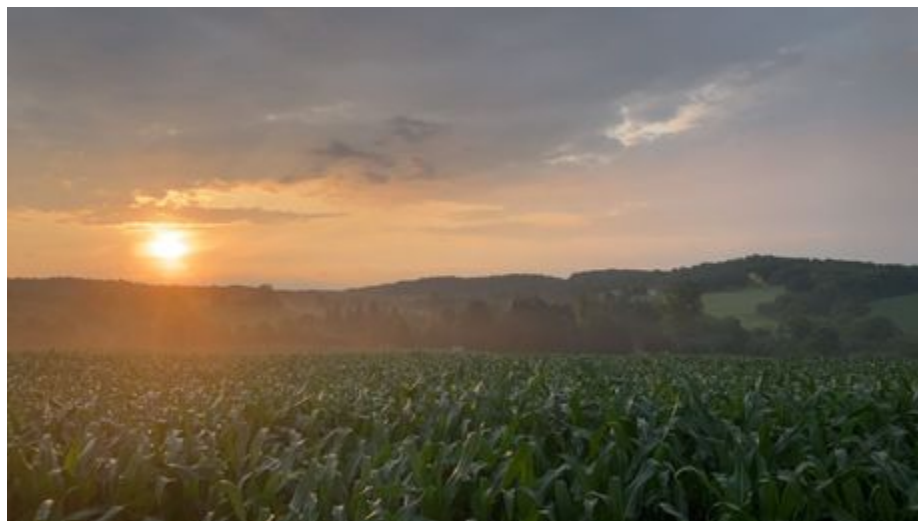
Invasive Plant Species (Common Names):

Representative Photo(s):





Field Data Sheet





Field Data Sheet

Notes :

11Alternate due to corn height and to avoid damaging crop.

Do you need to report observations of another open field?

Yes



Field Data Sheet

Corresponding Point ID(s): 12

Anthropogenic Disturbance/Management Practices: ATV/Other Vehicle Noise

Primary Open Field Cover Type: Field Cropland (including hay, wheat, oats, etc.)

Estimated Grass Cover (%): 50-90%

Estimated Forb Cover (%): 10-25%

Estimated Woody Vegetation Cover (%): None

Estimated Bare Ground (%): 1-10%

Estimated Litter Depth (inches): None

Average Vegetation Height (inches): 4-6

Dominant Plant Species (Common Names): Grass, clover,

Invasive Plant Species (Common Names):

Representative Photo(s):





Field Data Sheet





Field Data Sheet

Notes :

Do you need to report observations of another open field?

Yes



Field Data Sheet

Corresponding Point ID(s): 13 Alt

Anthropogenic Disturbance/Management Practices: None notable

Primary Open Field Cover Type: Row Cropland (Active)

Estimated Grass Cover (%): 90-100%

Estimated Forb Cover (%): None

Estimated Woody Vegetation Cover (%): None

Estimated Bare Ground (%): 1-10%

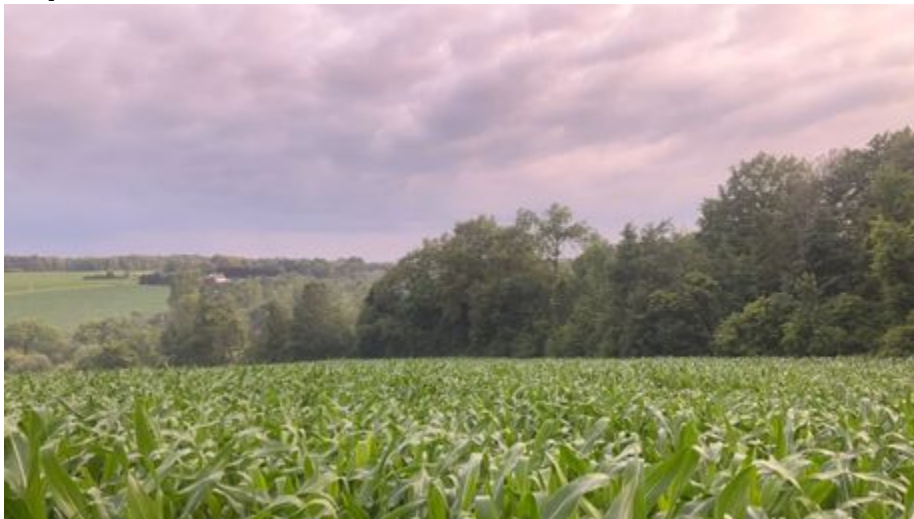
Estimated Litter Depth (inches): None

Average Vegetation Height (inches): 48-54

Dominant Plant Species (Common Names): Corn

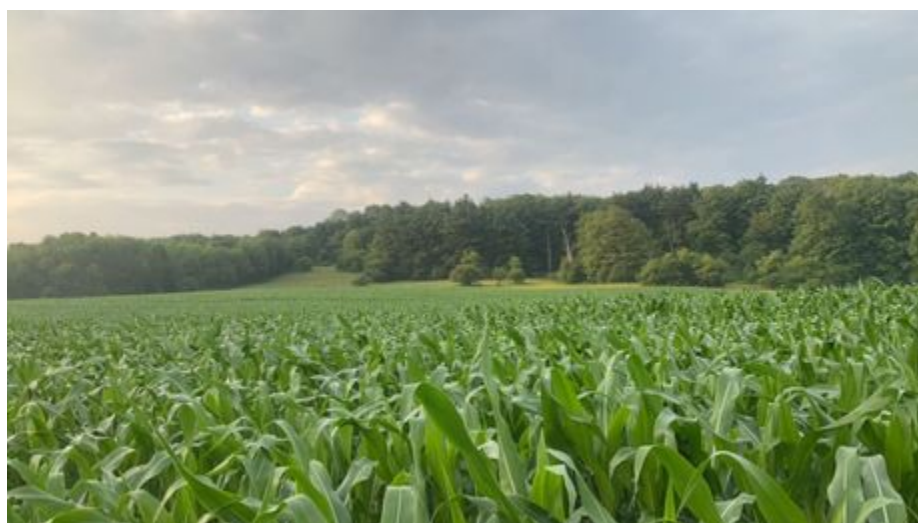
Invasive Plant Species (Common Names):

Representative Photo(s):





Field Data Sheet





Field Data Sheet

Notes :

13 Alternate due to corn height and to avoid damaging crop.

Do you need to report observations of another open field?

Yes



Field Data Sheet

Corresponding Point ID(s): 5

Anthropogenic Disturbance/Management Practices: ATV/Other Vehicle Noise

Primary Open Field Cover Type: Row Cropland (Active)

Estimated Grass Cover (%): 90-100%

Estimated Forb Cover (%): None

Estimated Woody Vegetation Cover (%): None

Estimated Bare Ground (%): 1-10%

Estimated Litter Depth (inches): None

Average Vegetation Height (inches): 36-42

Dominant Plant Species (Common Names): Corn

Invasive Plant Species (Common Names):

Representative Photo(s):





Field Data Sheet





Field Data Sheet

Notes :

Do you need to report observations of another open field?

Yes



Field Data Sheet

Corresponding Point ID(s): 4

Anthropogenic Disturbance/Management Practices: ATV/Other Vehicle Noise

Primary Open Field Cover Type: Row Cropland (Active)

Estimated Grass Cover (%): 90-100%

Estimated Forb Cover (%): None

Estimated Woody Vegetation Cover (%): None

Estimated Bare Ground (%): 1-10%

Estimated Litter Depth (inches): None

Average Vegetation Height (inches): 36-42

Dominant Plant Species (Common Names): Corn

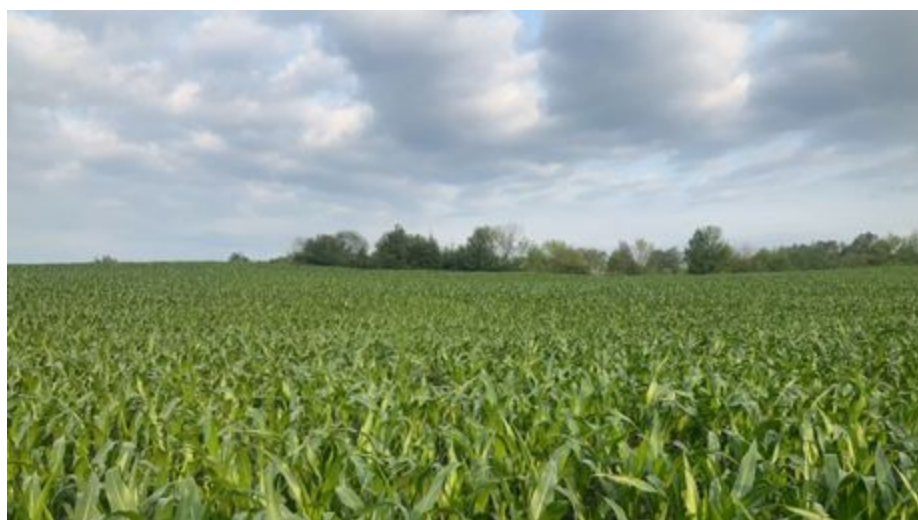
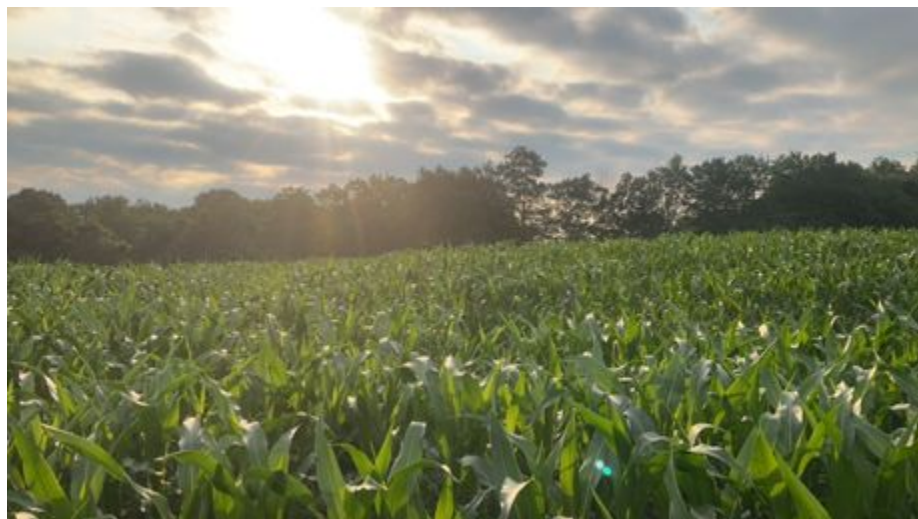
Invasive Plant Species (Common Names):

Representative Photo(s):





Field Data Sheet





Field Data Sheet

Notes :

Do you need to report observations of another open field?

Yes



Field Data Sheet

Corresponding Point ID(s): 3

Anthropogenic Disturbance/Management Practices: ATV/Other Vehicle Noise

Primary Open Field Cover Type: Row Cropland (Active)

Estimated Grass Cover (%): 90-100%

Estimated Forb Cover (%): None

Estimated Woody Vegetation Cover (%): None

Estimated Bare Ground (%): 1-10%

Estimated Litter Depth (inches): None

Average Vegetation Height (inches): 36-42

Dominant Plant Species (Common Names): Corn

Invasive Plant Species (Common Names):

Representative Photo(s):





Field Data Sheet





Field Data Sheet

Notes :

Do you need to report observations of another open field?

Yes



Field Data Sheet

Corresponding Point ID(s): 6

Anthropogenic Disturbance/Management Practices: ATV/Other Vehicle Noise

Primary Open Field Cover Type: Field Cropland (including hay, wheat, oats, etc.)

Estimated Grass Cover (%): 50-90%

Estimated Forb Cover (%): 10-25%

Estimated Woody Vegetation Cover (%): None

Estimated Bare Ground (%): None

Estimated Litter Depth (inches): 0-1"

Average Vegetation Height (inches): 6-12

Dominant Plant Species (Common Names): Grass, clover, dandelion, bed

Invasive Plant Species (Common Names):

Representative Photo(s):





Field Data Sheet





Field Data Sheet

Notes :

Do you need to report observations of another open field?

Yes



Field Data Sheet

Corresponding Point ID(s): 15.1

Anthropogenic Disturbance/Management Practices: ATV/Other Vehicle Noise

Primary Open Field Cover Type: Row Cropland (Active)

Estimated Grass Cover (%): 90-100%

Estimated Forb Cover (%): 1-10%

Estimated Woody Vegetation Cover (%): None

Estimated Bare Ground (%): 1-10%

Estimated Litter Depth (inches): 0-1"

Average Vegetation Height (inches): 48-54

Dominant Plant Species (Common Names): Corn, grass, clover, buttercup, daisy

Invasive Plant Species (Common Names):

Representative Photo(s):





Field Data Sheet





Field Data Sheet

Notes :

15.1, not 15.

Do you need to report observations of another open field?

Yes



Field Data Sheet

Corresponding Point ID(s): 16 Alt

Anthropogenic Disturbance/Management Practices: ATV/Other Vehicle Noise

Primary Open Field Cover Type: Row Cropland (Active)

Estimated Grass Cover (%): 90-100%

Estimated Forb Cover (%): None

Estimated Woody Vegetation Cover (%): None

Estimated Bare Ground (%): 1-10%

Estimated Litter Depth (inches): None

Average Vegetation Height (inches): 48-54

Dominant Plant Species (Common Names): Corn

Invasive Plant Species (Common Names):

Representative Photo(s):





Field Data Sheet





Field Data Sheet

Notes :

16 Alternate due to corn height and to avoid damaging crop.

Do you need to report observations of another open field?

Yes



Field Data Sheet

Corresponding Point ID(s): 17 Alt

Anthropogenic Disturbance/Management Practices: ATV/Other Vehicle Noise

Primary Open Field Cover Type: Row Cropland (Active)

Estimated Grass Cover (%): 90-100%

Estimated Forb Cover (%): None

Estimated Woody Vegetation Cover (%): None

Estimated Bare Ground (%): 1-10%

Estimated Litter Depth (inches): None

Average Vegetation Height (inches): 48-54

Dominant Plant Species (Common Names): Corn

Invasive Plant Species (Common Names):

Representative Photo(s):





Field Data Sheet





Field Data Sheet

Notes :

17 Alternate due to corn height and to avoid damaging crop.

Do you need to report observations of another open field?

Yes



Field Data Sheet

Corresponding Point ID(s): 16.2 Alt

Anthropogenic Disturbance/Management Practices: ATV/Other Vehicle Noise

Primary Open Field Cover Type: Row Cropland (Active)

Estimated Grass Cover (%): 90-100%

Estimated Forb Cover (%): None

Estimated Woody Vegetation Cover (%): None

Estimated Bare Ground (%): None

Estimated Litter Depth (inches): None

Average Vegetation Height (inches): 48-54

Dominant Plant Species (Common Names): Corn

Invasive Plant Species (Common Names):

Representative Photo(s):





Field Data Sheet





Field Data Sheet

Notes :

16.2 Alternate due to corn height and to avoid damaging crop.

Do you need to report observations of another open field?

Yes



Field Data Sheet

Corresponding Point ID(s): 16.1

Anthropogenic Disturbance/Management Practices: ATV/Other Vehicle Noise

Primary Open Field Cover Type: Pastureland

Estimated Grass Cover (%): 50-90%

Estimated Forb Cover (%): 10-25%

Estimated Woody Vegetation Cover (%): None

Estimated Bare Ground (%): None

Estimated Litter Depth (inches): 0-1"

Average Vegetation Height (inches): 18-24

Dominant Plant Species (Common Names): Grass, clover, thistle, daisy, buttercup,

Invasive Plant Species (Common Names):

Representative Photo(s):





Field Data Sheet





Field Data Sheet

Notes :

Do you need to report observations of another open field?

Yes



Field Data Sheet

Corresponding Point ID(s): 14

Anthropogenic Disturbance/Management Practices: ATV/Other Vehicle Noise

Primary Open Field Cover Type: Row Cropland (Active)

Estimated Grass Cover (%): 90-100%

Estimated Forb Cover (%): None

Estimated Woody Vegetation Cover (%): None

Estimated Bare Ground (%): 1-10%

Estimated Litter Depth (inches): 0-1"

Average Vegetation Height (inches): 42-48

Dominant Plant Species (Common Names): Corn

Invasive Plant Species (Common Names):

Representative Photo(s):





Field Data Sheet





Field Data Sheet

Notes :

Do you need to report observations of another open field?

Yes



Field Data Sheet

Corresponding Point ID(s): 1

Anthropogenic Disturbance/Management Practices: ATV/Other Vehicle Noise

Primary Open Field Cover Type: Row Cropland (Active)

Estimated Grass Cover (%): 90-100%

Estimated Forb Cover (%): None

Estimated Woody Vegetation Cover (%): None

Estimated Bare Ground (%): 1-10%

Estimated Litter Depth (inches): None

Average Vegetation Height (inches): 30-36

Dominant Plant Species (Common Names): Corn

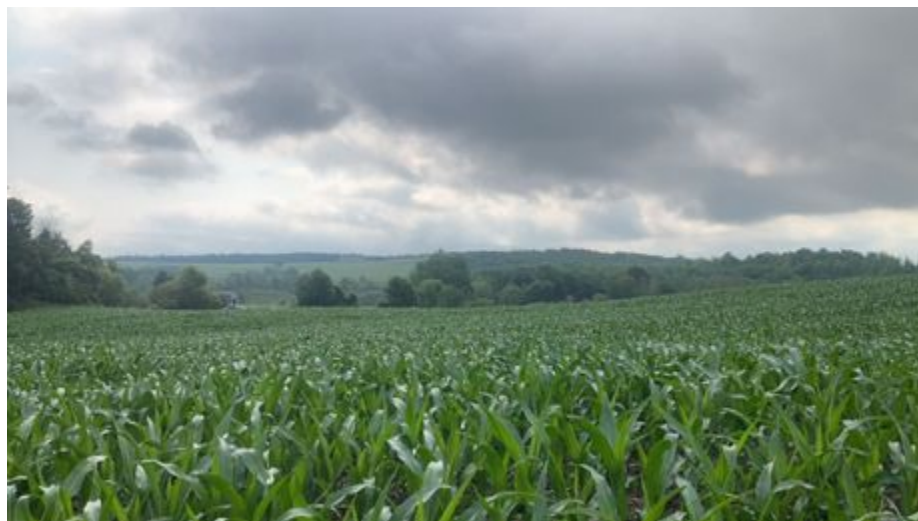
Invasive Plant Species (Common Names):

Representative Photo(s):





Field Data Sheet





Field Data Sheet

Notes :

Do you need to report observations of another open field?

Yes



Field Data Sheet

Corresponding Point ID(s): 2

Anthropogenic Disturbance/Management Practices: ATV/Other Vehicle Noise

Primary Open Field Cover Type: Row Cropland (Active)

Estimated Grass Cover (%): 90-100%

Estimated Forb Cover (%): None

Estimated Woody Vegetation Cover (%): None

Estimated Bare Ground (%): 1-10%

Estimated Litter Depth (inches): None

Average Vegetation Height (inches): 36-42

Dominant Plant Species (Common Names): Corn

Invasive Plant Species (Common Names):

Representative Photo(s):





Field Data Sheet





Field Data Sheet

Notes :

Do you need to report observations of another open field?

No



Field Data Sheet

Weather Conditions at End of Survey

Temperature (°F): 72

Wind Speed (mph): 4 – 7 (Light Breeze; Leaves rustle)

Wind Direction: S

Cloud Cover: Mostly Clear (10-25%)

Visibility: Good (10+ miles; clear)

Precipitation: None (Clear)

Weather Notes:

Were there any notable weather events/changes during the survey? No

Bird Observation Summary

Were any Endangered/Threatened Species observed?

No

Were any Species of Special Concern observed?

No

Were probable, possible, or confirmed breeding behaviors observed for any Listed Species (Endangered/Threatened/Special Concern)?

No

Were there additional photos documenting birds observed, habitat conditions, and/or other features of interest?

No

Additional Photo(s):

Were any alternate point count survey locations used due to access or visual constraints?

Yes



Field Data Sheet

Alternate Point Count Survey Locations: 7 Alt, 9 Alt, 10 Alt, 11 Alt, 13 Alt, 16 Alt, 17 Alt, 16.2 Alt, and 15.1 insted of 15.

Incidental bird species observed outside of timed point count surveys (Alpha Codes or Common Names):

INBU

Overall Survey Notes:

Alternate points were selected and surveyed due to height of corn and to avoid damaging crops. All points provided coverage of the original area.



Field Data Sheet

Breeding Bird Survey

Submitted By: abutler@edrdpc.com

Submitted Time: July 14, 2023 9:22 AM

Survey Information

Project Name: Hoffman Falls

Survey Date: July 12, 2023

Surveyor Name: Anna Butler

Points Surveyed: 35-49

Survey Start Time: 05:15

Survey End Time: 09:47

Weather Conditions at Start of Survey

Temperature (°F): 63

Wind Speed (mph): 1 - 3 (Light Air; Smoke drifts)

Wind Direction: NNE

Cloud Cover: Mostly Clear (10-25%)

Visibility: Good (10+ miles; clear)

Precipitation: None (Clear)

Weather Notes: Thunderstorm has just passed through before survey start



Field Data Sheet

Open Field Condition Observations

Corresponding Point ID(s): 35.1

Anthropogenic Disturbance/Management Practices: None notable

Primary Open Field Cover Type: Field Cropland (including hay, wheat, oats, etc.)

Estimated Grass Cover (%): 25-50%

Estimated Forb Cover (%): 25-50%

Estimated Woody Vegetation Cover (%): None

Estimated Bare Ground (%): None

Estimated Litter Depth (inches): 0-1"

Average Vegetation Height (inches): 6-12

Dominant Plant Species (Common Names): Grass, bedstraw, clover

Invasive Plant Species (Common Names):

Representative Photo(s):





Field Data Sheet





Field Data Sheet

Notes :

Do you need to report observations of another open field?

Yes



Field Data Sheet

Corresponding Point ID(s): 35

Anthropogenic Disturbance/Management Practices: None notable

Primary Open Field Cover Type: Field Cropland (including hay, wheat, oats, etc.)

Estimated Grass Cover (%): 25-50%

Estimated Forb Cover (%): 25-50%

Estimated Woody Vegetation Cover (%): None

Estimated Bare Ground (%): None

Estimated Litter Depth (inches): 0-1"

Average Vegetation Height (inches): 6-12

Dominant Plant Species (Common Names): Grass, clover

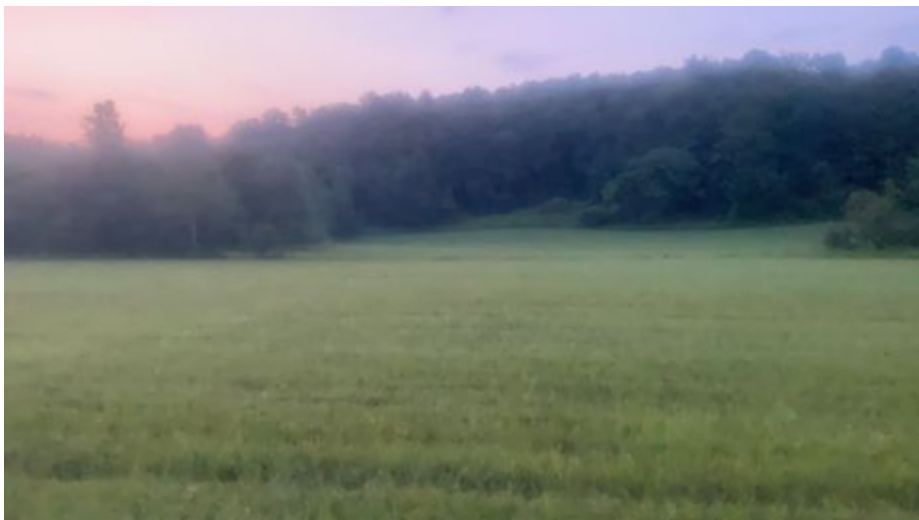
Invasive Plant Species (Common Names):

Representative Photo(s):





Field Data Sheet





Field Data Sheet

Notes :

Do you need to report observations of another open field?

Yes



Field Data Sheet

Corresponding Point ID(s): 41

Anthropogenic Disturbance/Management Practices: Traffic Noise

Primary Open Field Cover Type: Row Cropland (Active)

Estimated Grass Cover (%): 1-10%

Estimated Forb Cover (%): 25-50%

Estimated Woody Vegetation Cover (%): None

Estimated Bare Ground (%): 25-50%

Estimated Litter Depth (inches): 0-1"

Average Vegetation Height (inches): 24-30

Dominant Plant Species (Common Names): Corn

Invasive Plant Species (Common Names):

Representative Photo(s):





Field Data Sheet





Field Data Sheet

Notes :

Do you need to report observations of another open field?

Yes



Field Data Sheet

Corresponding Point ID(s): 40

Anthropogenic Disturbance/Management Practices: Traffic Noise

Primary Open Field Cover Type: Field Cropland (including hay, wheat, oats, etc.)

Estimated Grass Cover (%): 10-25%

Estimated Forb Cover (%): 50-90%

Estimated Woody Vegetation Cover (%): None

Estimated Bare Ground (%): None

Estimated Litter Depth (inches): 0-1"

Average Vegetation Height (inches): 4-6

Dominant Plant Species (Common Names): Alfalfa, grass

Invasive Plant Species (Common Names):

Representative Photo(s):





Field Data Sheet





Field Data Sheet

Notes :

Do you need to report observations of another open field?

Yes



Field Data Sheet

Corresponding Point ID(s): 39

Anthropogenic Disturbance/Management Practices: Traffic Noise

Primary Open Field Cover Type: Field Cropland (including hay, wheat, oats, etc.)

Estimated Grass Cover (%): 25-50%

Estimated Forb Cover (%): 25-50%

Estimated Woody Vegetation Cover (%): None

Estimated Bare Ground (%): None

Estimated Litter Depth (inches): 0-1"

Average Vegetation Height (inches): 4-6

Dominant Plant Species (Common Names): Grass, clover

Invasive Plant Species (Common Names):

Representative Photo(s):





Field Data Sheet





Field Data Sheet

Notes :

Do you need to report observations of another open field?

Yes



Field Data Sheet

Corresponding Point ID(s): 37

Anthropogenic Disturbance/Management Practices: Traffic Noise

Primary Open Field Cover Type: Row Cropland (Active)

Estimated Grass Cover (%): 1-10%

Estimated Forb Cover (%): 25-50%

Estimated Woody Vegetation Cover (%): None

Estimated Bare Ground (%): 25-50%

Estimated Litter Depth (inches): None

Average Vegetation Height (inches): 48-54

Dominant Plant Species (Common Names): Corn

Invasive Plant Species (Common Names):

Representative Photo(s):





Field Data Sheet





Field Data Sheet

Notes :

Do you need to report observations of another open field?

Yes



Field Data Sheet

Corresponding Point ID(s): 36

Anthropogenic Disturbance/Management Practices: Traffic Noise

Primary Open Field Cover Type: Field Cropland (including hay, wheat, oats, etc.)

Estimated Grass Cover (%): 25-50%

Estimated Forb Cover (%): 25-50%

Estimated Woody Vegetation Cover (%): None

Estimated Bare Ground (%): None

Estimated Litter Depth (inches): 0-1"

Average Vegetation Height (inches): 4-6

Dominant Plant Species (Common Names): Grass, alfalfa

Invasive Plant Species (Common Names):

Representative Photo(s):





Field Data Sheet





Field Data Sheet

Notes :

Do you need to report observations of another open field?

Yes



Field Data Sheet

Corresponding Point ID(s): 37

Anthropogenic Disturbance/Management Practices: Traffic Noise

Primary Open Field Cover Type: Row Cropland (Active)

Estimated Grass Cover (%): 1-10%

Estimated Forb Cover (%): 25-50%

Estimated Woody Vegetation Cover (%): None

Estimated Bare Ground (%): 25-50%

Estimated Litter Depth (inches): None

Average Vegetation Height (inches): 48-54

Dominant Plant Species (Common Names): Corn

Invasive Plant Species (Common Names):

Representative Photo(s):





Field Data Sheet





Field Data Sheet

Notes :

Do you need to report observations of another open field?

Yes



Field Data Sheet

Corresponding Point ID(s): 45

Anthropogenic Disturbance/Management Practices: Traffic Noise

Primary Open Field Cover Type: Row Cropland (Active)

Estimated Grass Cover (%): 1-10%

Estimated Forb Cover (%): 25-50%

Estimated Woody Vegetation Cover (%): None

Estimated Bare Ground (%): 25-50%

Estimated Litter Depth (inches): 0-1"

Average Vegetation Height (inches): 24-30

Dominant Plant Species (Common Names): Corn

Invasive Plant Species (Common Names):

Representative Photo(s):





Field Data Sheet





Field Data Sheet

Notes :

Do you need to report observations of another open field?

Yes



Field Data Sheet

Corresponding Point ID(s): 44

Anthropogenic Disturbance/Management Practices: Traffic Noise

Primary Open Field Cover Type: Field Cropland (including hay, wheat, oats, etc.)

Estimated Grass Cover (%): 25-50%

Estimated Forb Cover (%): 25-50%

Estimated Woody Vegetation Cover (%): None

Estimated Bare Ground (%): None

Estimated Litter Depth (inches): 0-1"

Average Vegetation Height (inches): 6-12

Dominant Plant Species (Common Names): Grass, clover

Invasive Plant Species (Common Names):

Representative Photo(s):





Field Data Sheet





Field Data Sheet

Notes :

Do you need to report observations of another open field?

Yes



Field Data Sheet

Corresponding Point ID(s): 43

Anthropogenic Disturbance/Management Practices: Traffic Noise

Primary Open Field Cover Type: Field Cropland (including hay, wheat, oats, etc.)

Estimated Grass Cover (%): 25-50%

Estimated Forb Cover (%): 25-50%

Estimated Woody Vegetation Cover (%): None

Estimated Bare Ground (%): None

Estimated Litter Depth (inches): 0-1"

Average Vegetation Height (inches): 6-12

Dominant Plant Species (Common Names): Grass, clover

Invasive Plant Species (Common Names):

Representative Photo(s):





Field Data Sheet





Field Data Sheet

Notes :

Do you need to report observations of another open field?

Yes



Field Data Sheet

Corresponding Point ID(s): 42

Anthropogenic Disturbance/Management Practices: Traffic Noise

Primary Open Field Cover Type: Field Cropland (including hay, wheat, oats, etc.)

Estimated Grass Cover (%): 25-50%

Estimated Forb Cover (%): 25-50%

Estimated Woody Vegetation Cover (%): None

Estimated Bare Ground (%): None

Estimated Litter Depth (inches): 0-1"

Average Vegetation Height (inches): 6-12

Dominant Plant Species (Common Names): Grass, clover

Invasive Plant Species (Common Names):

Representative Photo(s):





Field Data Sheet





Field Data Sheet

Notes :

Do you need to report observations of another open field?

Yes



Field Data Sheet

Corresponding Point ID(s): 46

Anthropogenic Disturbance/Management Practices: Traffic Noise

Primary Open Field Cover Type: Field Cropland (including hay, wheat, oats, etc.)

Estimated Grass Cover (%): 10-25%

Estimated Forb Cover (%): 50-90%

Estimated Woody Vegetation Cover (%): None

Estimated Bare Ground (%): None

Estimated Litter Depth (inches): 0-1"

Average Vegetation Height (inches): 18-24

Dominant Plant Species (Common Names): Red clover

Invasive Plant Species (Common Names):

Representative Photo(s):





Field Data Sheet





Field Data Sheet

Notes :

Do you need to report observations of another open field?

Yes



Field Data Sheet

Corresponding Point ID(s): 47

Anthropogenic Disturbance/Management Practices: Traffic Noise

Primary Open Field Cover Type: Field Cropland (including hay, wheat, oats, etc.)

Estimated Grass Cover (%): 25-50%

Estimated Forb Cover (%): 25-50%

Estimated Woody Vegetation Cover (%): None

Estimated Bare Ground (%): None

Estimated Litter Depth (inches): 0-1"

Average Vegetation Height (inches): 12-18

Dominant Plant Species (Common Names): Grass, bedstraw, dandelion, red clover

Invasive Plant Species (Common Names):

Representative Photo(s):





Field Data Sheet





Field Data Sheet

Notes :

Do you need to report observations of another open field?

Yes



Field Data Sheet

Corresponding Point ID(s): 48

Anthropogenic Disturbance/Management Practices: Traffic Noise

Primary Open Field Cover Type: Row Cropland (Active)

Estimated Grass Cover (%): 1-10%

Estimated Forb Cover (%): 25-50%

Estimated Woody Vegetation Cover (%): None

Estimated Bare Ground (%): 25-50%

Estimated Litter Depth (inches): None

Average Vegetation Height (inches): 24-30

Dominant Plant Species (Common Names): Corn

Invasive Plant Species (Common Names):

Representative Photo(s):





Field Data Sheet





Field Data Sheet

Notes :

Do you need to report observations of another open field?

Yes



Field Data Sheet

Corresponding Point ID(s): 49

Anthropogenic Disturbance/Management Practices: Traffic Noise

Primary Open Field Cover Type: Row Cropland (Active)

Estimated Grass Cover (%): 1-10%

Estimated Forb Cover (%): 25-50%

Estimated Woody Vegetation Cover (%): None

Estimated Bare Ground (%): 25-50%

Estimated Litter Depth (inches): None

Average Vegetation Height (inches): 30-36

Dominant Plant Species (Common Names): Corn

Invasive Plant Species (Common Names):

Representative Photo(s):





Field Data Sheet





Field Data Sheet

Notes :

Do you need to report observations of another open field?

No



Field Data Sheet

Weather Conditions at End of Survey

Temperature (°F): 73

Wind Speed (mph): 1 - 3 (Light Air; Smoke drifts)

Wind Direction: NW

Cloud Cover: Mostly Cloudy (50% - 90%)

Visibility: Good (10+ miles; clear)

Precipitation: None (Clear)

Weather Notes:

Were there any notable weather events/changes during the survey? No

Bird Observation Summary

Were any Endangered/Threatened Species observed?

No

Were any Species of Special Concern observed?

No

Were probable, possible, or confirmed breeding behaviors observed for any Listed Species (Endangered/Threatened/Special Concern)?

No

Were there additional photos documenting birds observed, habitat conditions, and/or other features of interest?

No

Additional Photo(s):

Were any alternate point count survey locations used due to access or visual constraints?

No

Alternate Point Count Survey Locations:



Field Data Sheet

**Incidental bird species observed outside of timed point count surveys
(Alpha Codes or Common Names):**

GRHE

Overall Survey Notes:



Field Data Sheet

Breeding Bird Survey

Submitted By: abutler@edrdpc.com

Submitted Time: July 14, 2023 9:22 AM

Survey Information

Project Name: Hoffman Falls

Survey Date: July 13, 2023

Surveyor Name: Anna Butler

Points Surveyed: 50, 50.1, 69-80

Survey Start Time: 05:35

Survey End Time: 10:07

Weather Conditions at Start of Survey

Temperature (°F): 66

Wind Speed (mph): 1 - 3 (Light Air; Smoke drifts)

Wind Direction: SE

Cloud Cover: Mostly Cloudy (50% - 90%)

Visibility: Good (10+ miles; clear)

Precipitation: None (Clear)

Weather Notes:



Field Data Sheet

Open Field Condition Observations

Corresponding Point ID(s): 50.1

Anthropogenic Disturbance/Management Practices: Traffic Noise

Primary Open Field Cover Type: Field Cropland (including hay, wheat, oats, etc.)

Estimated Grass Cover (%): 25-50%

Estimated Forb Cover (%): 25-50%

Estimated Woody Vegetation Cover (%): None

Estimated Bare Ground (%): None

Estimated Litter Depth (inches): 0-1"

Average Vegetation Height (inches): 18-24

Dominant Plant Species (Common Names): Grass, knapweed, bedstraw

Invasive Plant Species (Common Names):

Representative Photo(s):





Field Data Sheet





Field Data Sheet

Notes :

Do you need to report observations of another open field?

Yes



Field Data Sheet

Corresponding Point ID(s): 50

Anthropogenic Disturbance/Management Practices: Traffic Noise

Primary Open Field Cover Type: Field Cropland (including hay, wheat, oats, etc.)

Estimated Grass Cover (%): 25-50%

Estimated Forb Cover (%): 25-50%

Estimated Woody Vegetation Cover (%): None

Estimated Bare Ground (%): None

Estimated Litter Depth (inches): 0-1"

Average Vegetation Height (inches): 4-6

Dominant Plant Species (Common Names): Grass, bedstraw, clover

Invasive Plant Species (Common Names):

Representative Photo(s):





Field Data Sheet





Field Data Sheet

Notes :

Do you need to report observations of another open field?

Yes



Field Data Sheet

Corresponding Point ID(s): 69

Anthropogenic Disturbance/Management Practices: Traffic Noise

Primary Open Field Cover Type: Pastureland

Estimated Grass Cover (%): 25-50%

Estimated Forb Cover (%): 25-50%

Estimated Woody Vegetation Cover (%): None

Estimated Bare Ground (%): None

Estimated Litter Depth (inches): 0-1"

Average Vegetation Height (inches): 12-18

Dominant Plant Species (Common Names): Grass, dandelion, bedstraw

Invasive Plant Species (Common Names):

Representative Photo(s):





Field Data Sheet





Field Data Sheet

Notes :

Do you need to report observations of another open field?

Yes



Field Data Sheet

Corresponding Point ID(s): 70

Anthropogenic Disturbance/Management Practices: Traffic Noise

Primary Open Field Cover Type: Row Cropland (Active)

Estimated Grass Cover (%): 1-10%

Estimated Forb Cover (%): 25-50%

Estimated Woody Vegetation Cover (%): None

Estimated Bare Ground (%): 25-50%

Estimated Litter Depth (inches): None

Average Vegetation Height (inches): 54-60

Dominant Plant Species (Common Names): Corn

Invasive Plant Species (Common Names):

Representative Photo(s):





Field Data Sheet





Field Data Sheet

Notes :

Do you need to report observations of another open field?

Yes



Field Data Sheet

Corresponding Point ID(s): 71

Anthropogenic Disturbance/Management Practices: Traffic Noise

Primary Open Field Cover Type: Field Cropland (including hay, wheat, oats, etc.)

Estimated Grass Cover (%): 25-50%

Estimated Forb Cover (%): 25-50%

Estimated Woody Vegetation Cover (%): None

Estimated Bare Ground (%): None

Estimated Litter Depth (inches): 0-1"

Average Vegetation Height (inches): 36-42

Dominant Plant Species (Common Names): Grass, alfalfa

Invasive Plant Species (Common Names):

Representative Photo(s):





Field Data Sheet





Field Data Sheet

Notes :

Do you need to report observations of another open field?

Yes



Field Data Sheet

Corresponding Point ID(s): 76

Anthropogenic Disturbance/Management Practices: Traffic Noise

Primary Open Field Cover Type: Field Cropland (including hay, wheat, oats, etc.)

Estimated Grass Cover (%): 25-50%

Estimated Forb Cover (%): 25-50%

Estimated Woody Vegetation Cover (%): None

Estimated Bare Ground (%): None

Estimated Litter Depth (inches): 0-1"

Average Vegetation Height (inches): 24-30

Dominant Plant Species (Common Names): Grass, alfalfa

Invasive Plant Species (Common Names):

Representative Photo(s):





Field Data Sheet





Field Data Sheet

Notes :

Do you need to report observations of another open field?

Yes



Field Data Sheet

Corresponding Point ID(s): 76.1

Anthropogenic Disturbance/Management Practices: Traffic Noise

Primary Open Field Cover Type: Successional Old Field

Estimated Grass Cover (%): 25-50%

Estimated Forb Cover (%): 25-50%

Estimated Woody Vegetation Cover (%): 1-10%

Estimated Bare Ground (%): None

Estimated Litter Depth (inches): 1-3"

Average Vegetation Height (inches): 54-60

Dominant Plant Species (Common Names): Grass, goldenrod

Invasive Plant Species (Common Names): Honeysuckle

Representative Photo(s):





Field Data Sheet





Field Data Sheet

Notes :

Do you need to report observations of another open field?

Yes



Field Data Sheet

Corresponding Point ID(s): 75

Anthropogenic Disturbance/Management Practices: Farm Equipment Noise

Primary Open Field Cover Type: Field Cropland (including hay, wheat, oats, etc.)

Estimated Grass Cover (%): None

Estimated Forb Cover (%): 50-90%

Estimated Woody Vegetation Cover (%): None

Estimated Bare Ground (%): 1-10%

Estimated Litter Depth (inches): 0-1"

Average Vegetation Height (inches): 6-12

Dominant Plant Species (Common Names): Alfalfa

Invasive Plant Species (Common Names):

Representative Photo(s):





Field Data Sheet





Field Data Sheet

Notes :

Do you need to report observations of another open field?

Yes



Field Data Sheet

Corresponding Point ID(s): 74

Anthropogenic Disturbance/Management Practices: Farm Equipment Noise

Primary Open Field Cover Type: Field Cropland (including hay, wheat, oats, etc.)

Estimated Grass Cover (%): None

Estimated Forb Cover (%): 50-90%

Estimated Woody Vegetation Cover (%): None

Estimated Bare Ground (%): 1-10%

Estimated Litter Depth (inches): 0-1"

Average Vegetation Height (inches): 6-12

Dominant Plant Species (Common Names): Alfalfa

Invasive Plant Species (Common Names):

Representative Photo(s):





Field Data Sheet





Field Data Sheet

Notes :

Do you need to report observations of another open field?

Yes



Field Data Sheet

Corresponding Point ID(s): 72

Anthropogenic Disturbance/Management Practices: Farm Equipment Noise

Primary Open Field Cover Type: Field Cropland (including hay, wheat, oats, etc.)

Estimated Grass Cover (%): 25-50%

Estimated Forb Cover (%): 10-25%

Estimated Woody Vegetation Cover (%): None

Estimated Bare Ground (%): 25-50%

Estimated Litter Depth (inches): None

Average Vegetation Height (inches): 4-6

Dominant Plant Species (Common Names): Grass, alfalfa

Invasive Plant Species (Common Names):

Representative Photo(s):





Field Data Sheet





Field Data Sheet

Notes :

Do you need to report observations of another open field?

Yes



Field Data Sheet

Corresponding Point ID(s): 73

Anthropogenic Disturbance/Management Practices: Traffic Noise

Primary Open Field Cover Type: Field Cropland (including hay, wheat, oats, etc.)

Estimated Grass Cover (%): 25-50%

Estimated Forb Cover (%): 10-25%

Estimated Woody Vegetation Cover (%): None

Estimated Bare Ground (%): 25-50%

Estimated Litter Depth (inches): None

Average Vegetation Height (inches): 4-6

Dominant Plant Species (Common Names):

Invasive Plant Species (Common Names):

Representative Photo(s):





Field Data Sheet





Field Data Sheet

Notes :

Do you need to report observations of another open field?

Yes



Field Data Sheet

Corresponding Point ID(s): 77

Anthropogenic Disturbance/Management Practices: None notable

Primary Open Field Cover Type: Field Cropland (including hay, wheat, oats, etc.)

Estimated Grass Cover (%): 25-50%

Estimated Forb Cover (%): 25-50%

Estimated Woody Vegetation Cover (%): None

Estimated Bare Ground (%): None

Estimated Litter Depth (inches): 0-1"

Average Vegetation Height (inches): 12-18

Dominant Plant Species (Common Names): Grass, alfalfa, clover

Invasive Plant Species (Common Names):

Representative Photo(s):

