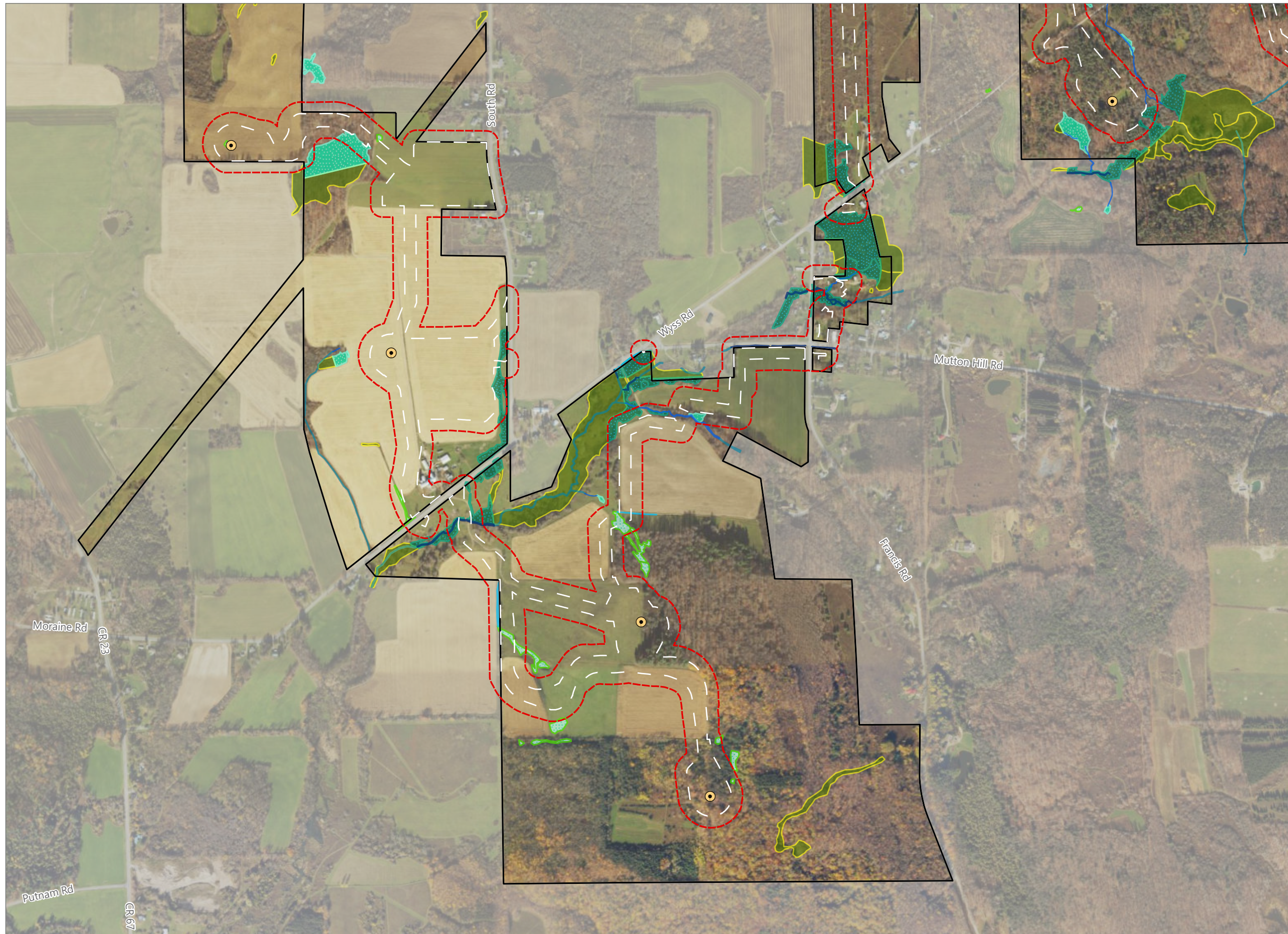


Figure 14-1. Delineated Wetlands and Streams

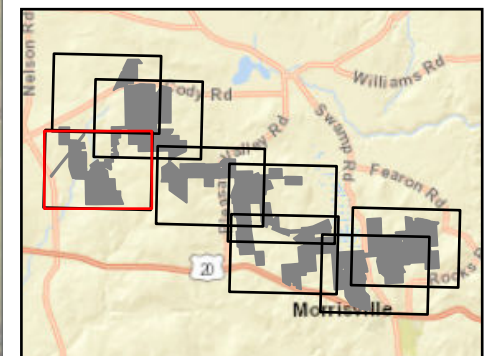


Hoffman Falls Wind

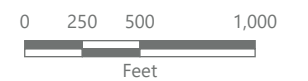
Towns of Eaton, Fenner, Nelson and Smithfield, Madison County, New York

**94-c Permit Application
Matter No. 23-00038**

- Delineated Stream Non-jurisdictional
 - Delineated Stream w/ Federal Jurisdiction
 - Delineated Stream w/ State & Federal Jurisdiction
 - Delineated Wetland Non-jurisdictional
 - Delineated Wetland w/ Federal Jurisdiction
 - Delineated Wetland w/ State & Federal Jurisdiction
 - Approximate Stream
 - Approximate Wetland
- Facility Components
- Wind Turbine
 - Limit of Disturbance
 - Facility Site
 - Wetland Study Area



Sheet 1 of 8



Prepared February 7, 2024
Basemap: USDA NAIP "2022 New York 60cm" orthoimagery map service

Figure 14-1. Delineated Wetlands and Streams

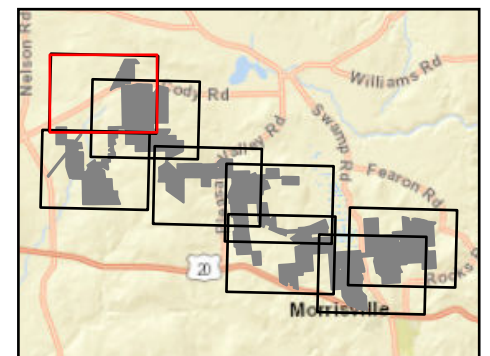


Hoffman Falls Wind

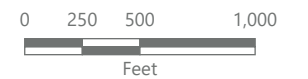
Towns of Eaton, Fenner, Nelson and
Smithfield, Madison County,
New York

**94-c Permit Application
Matter No. 23-00038**

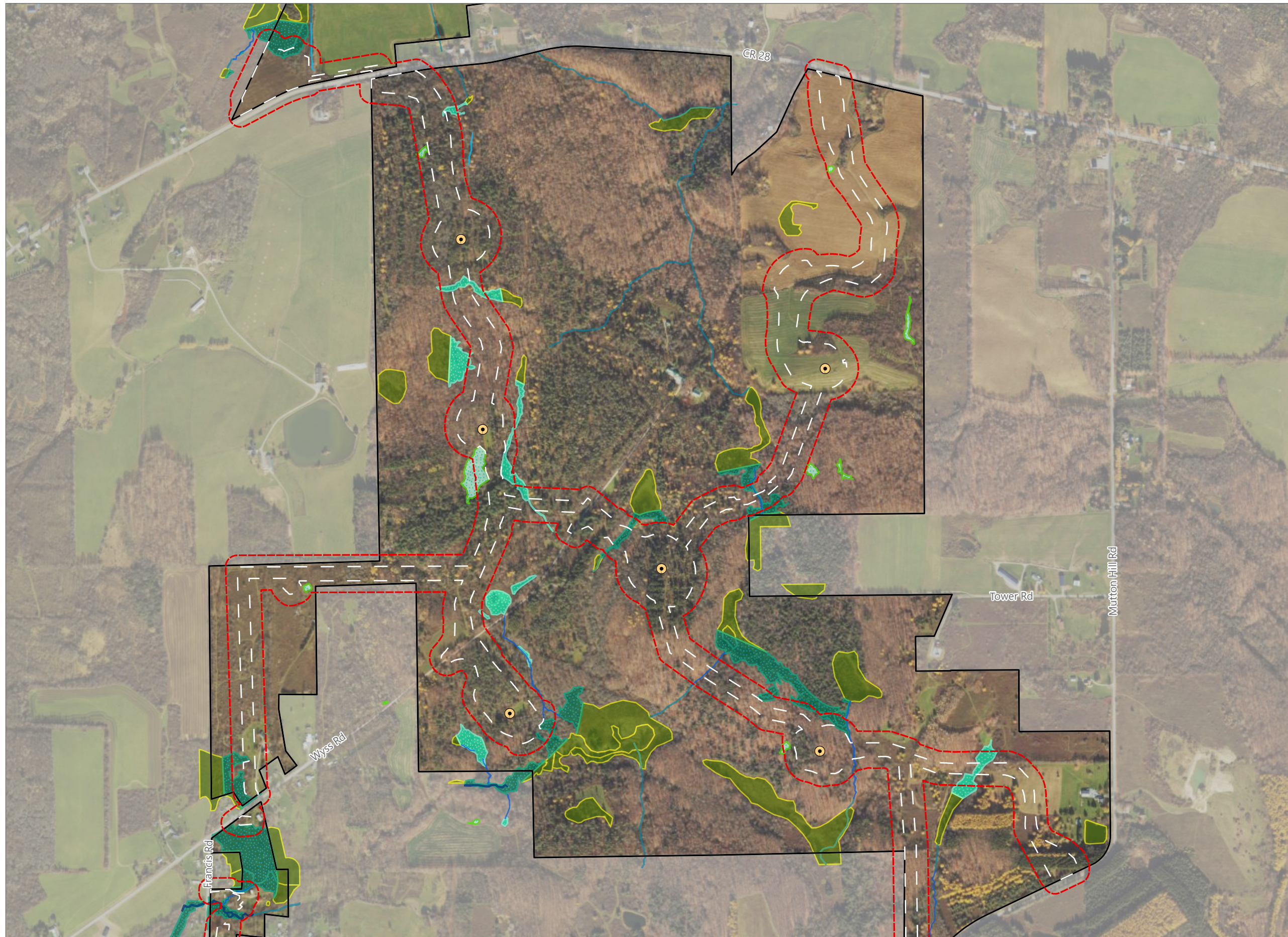
- Delineated Stream Non-jurisdictional
- Delineated Stream w/
Federal Jurisdiction
- Delineated Wetland Non-jurisdictional
- Delineated Wetland w/
Federal Jurisdiction
- Delineated Wetland w/
State & Federal Jurisdiction
- Approximate Stream
- Approximate Wetland
- Facility Components**
- Wind Turbine
- Limit of Disturbance
- Facility Site
- Wetland Study Area



Sheet 2 of 8



Prepared February 7, 2024
Basemap: USDA NAIP "2022 New York 60cm" orthoimagery map
service

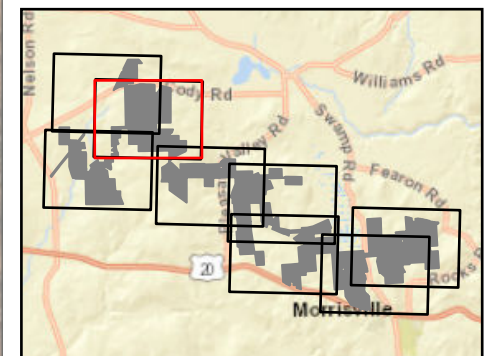


Hoffman Falls Wind

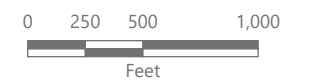
Towns of Eaton, Fenner, Nelson and Smithfield, Madison County, New York

94-c Permit Application
Matter No. 23-00038

- Delineated Stream Non-jurisdictional
- Delineated Stream w/ Federal Jurisdiction
- Delineated Stream w/ State & Federal Jurisdiction
- Delineated Wetland Non-jurisdictional
- Delineated Wetland w/ Federal Jurisdiction
- Delineated Wetland w/ State & Federal Jurisdiction
- Approximate Stream
- Approximate Wetland
- Facility Components**
- Wind Turbine
- Limit of Disturbance
- Facility Site
- Wetland Study Area



Sheet 3 of 8



Prepared February 7, 2024
Basemap: USDA NAIP "2022 New York 60cm" orthoimagery map service

Figure 14-1. Delineated Wetlands and Streams

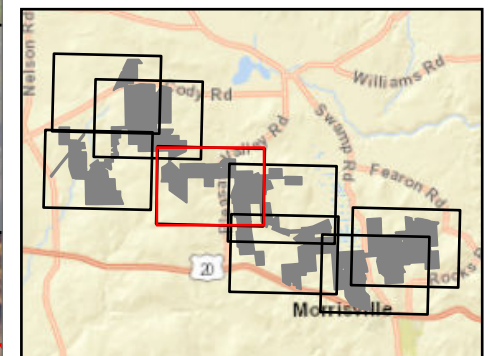


Hoffman Falls Wind

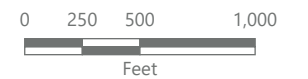
Towns of Eaton, Fenner, Nelson and
Smithfield, Madison County,
New York

94-c Permit Application
Matter No. 23-00038

- Delineated Stream Non-jurisdictional
 - Delineated Stream w/
Federal Jurisdiction
 - Delineated Stream w/
State & Federal Jurisdiction
 - Delineated Wetland Non-jurisdictional
 - Delineated Wetland w/
Federal Jurisdiction
 - Delineated Wetland w/
State & Federal Jurisdiction
 - Approximate Stream
 - Approximate Wetland
- Facility Components
- Wind Turbine
 - Limit of Disturbance
 - Facility Site
 - Wetland Study Area



Sheet 4 of 8



Prepared February 7, 2024
Basemap: USDA NAIP "2022 New York 60cm" orthoimagery map
service

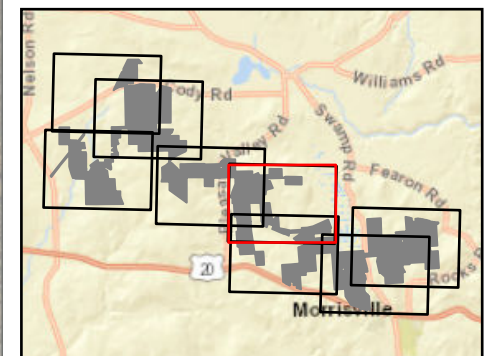


Hoffman Falls Wind

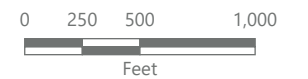
Towns of Eaton, Fenner, Nelson and
Smithfield, Madison County,
New York

**94-c Permit Application
Matter No. 23-00038**

- Delineated Stream Non-jurisdictional
 - Delineated Stream w/
Federal Jurisdiction
 - Delineated Stream w/
State & Federal Jurisdiction
 - Delineated Wetland Non-jurisdictional
 - Delineated Wetland w/
Federal Jurisdiction
 - Delineated Wetland w/
State & Federal Jurisdiction
 - Approximate Stream
 - Approximate Wetland
- Facility Components
- Wind Turbine
 - Limit of Disturbance
 - Facility Site
 - Wetland Study Area

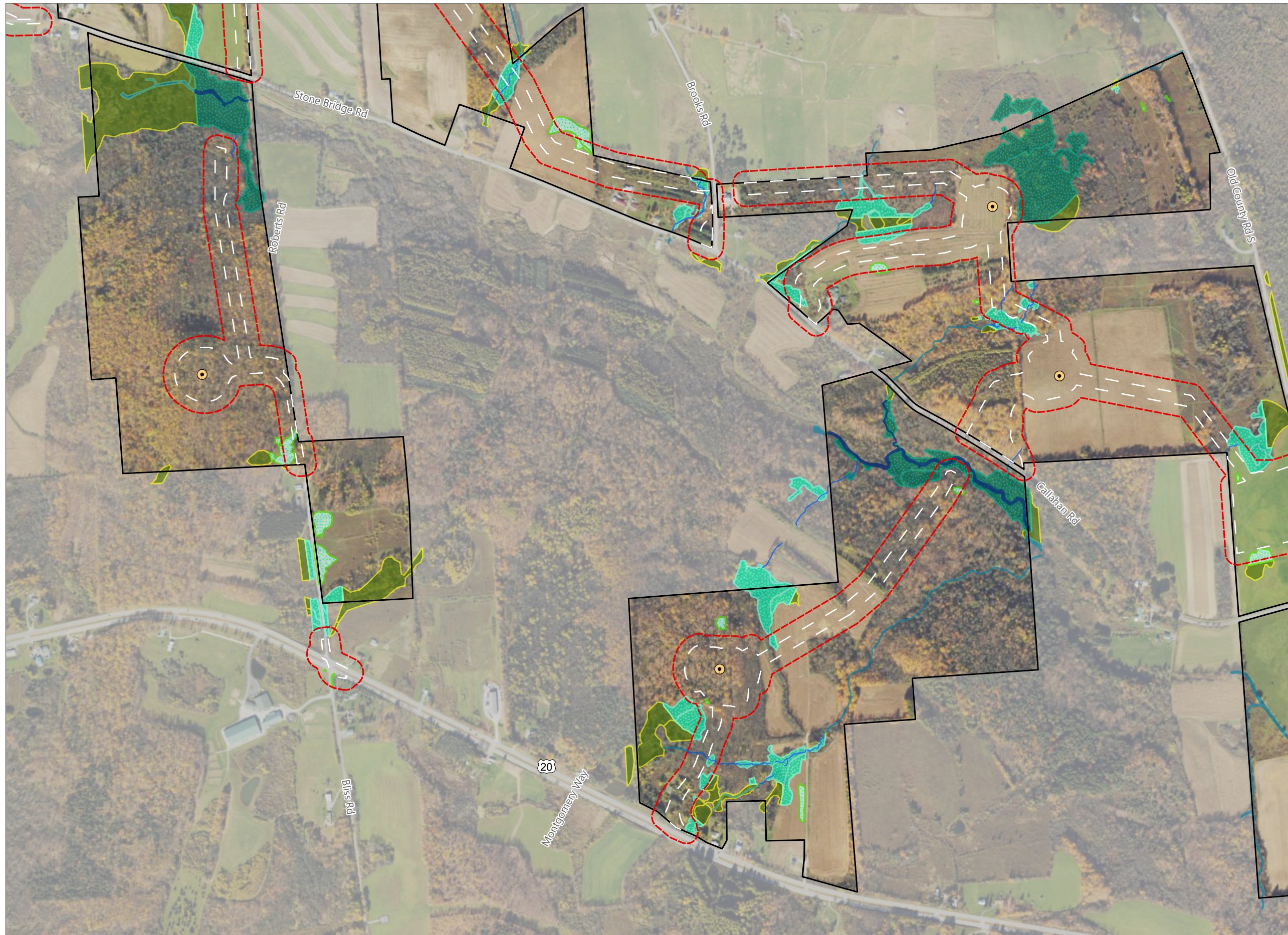


Sheet 5 of 8



Prepared February 7, 2024
Basemap: USDA NAIP "2022 New York 60cm" orthoimagery map
service

Figure 14-1. Delineated Wetlands and Streams

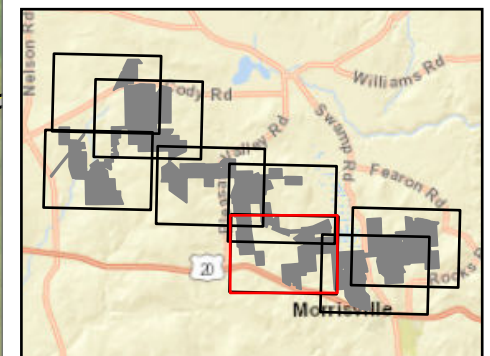


Hoffman Falls Wind

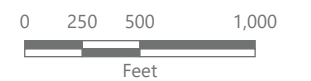
Towns of Eaton, Fenner, Nelson and
Smithfield, Madison County,
New York

**94-c Permit Application
Matter No. 23-00038**

- Delineated Stream Non-jurisdictional
 - Delineated Stream w/
Federal Jurisdiction
 - Delineated Stream w/
State & Federal Jurisdiction
 - Delineated Wetland Non-jurisdictional
 - Delineated Wetland w/
Federal Jurisdiction
 - Delineated Wetland w/
State & Federal Jurisdiction
 - Approximate Stream
 - Approximate Wetland
- Facility Components
- Wind Turbine
 - Limit of Disturbance
 - Facility Site
 - Wetland Study Area



Sheet 6 of 8



Prepared February 7, 2024
Basemap: USDA NAIP "2022 New York 60cm" orthoimagery map
service

Figure 14-1. Delineated Wetlands and Streams

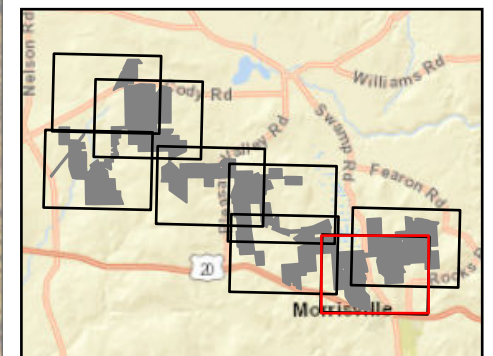


Hoffman Falls Wind

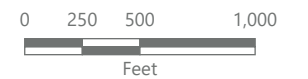
Towns of Eaton, Fenner, Nelson and Smithfield, Madison County, New York

**94-c Permit Application
Matter No. 23-00038**

- Delineated Stream Non-jurisdictional
 - Delineated Stream w/ Federal Jurisdiction
 - Delineated Stream w/ State & Federal Jurisdiction
 - Delineated Wetland Non-jurisdictional
 - Delineated Wetland w/ Federal Jurisdiction
 - Delineated Wetland w/ State & Federal Jurisdiction
 - Approximate Stream
 - Approximate Wetland
- Facility Components
- Wind Turbine
 - Limit of Disturbance
 - Facility Site
 - Wetland Study Area



Sheet 7 of 8



Prepared February 7, 2024
Basemap: USDA NAIP "2022 New York 60cm" orthoimagery map service

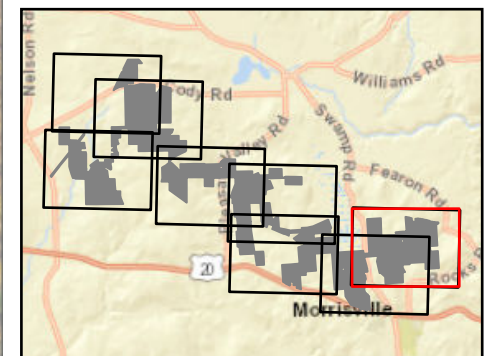


Hoffman Falls Wind

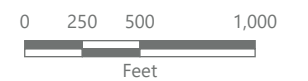
Towns of Eaton, Fenner, Nelson and Smithfield, Madison County, New York

**94-c Permit Application
Matter No. 23-00038**

- Delineated Stream Non-jurisdictional
 - Delineated Stream w/ Federal Jurisdiction
 - Delineated Stream w/ State & Federal Jurisdiction
 - Delineated Wetland Non-jurisdictional
 - Delineated Wetland w/ Federal Jurisdiction
 - Delineated Wetland w/ State & Federal Jurisdiction
 - Approximate Stream
 - Approximate Wetland
- Facility Components
- Wind Turbine
 - Limit of Disturbance
 - Facility Site
 - Wetland Study Area



Sheet 8 of 8



Prepared February 7, 2024
Basemap: USDA NAIP "2022 New York 60cm" orthoimagery map service