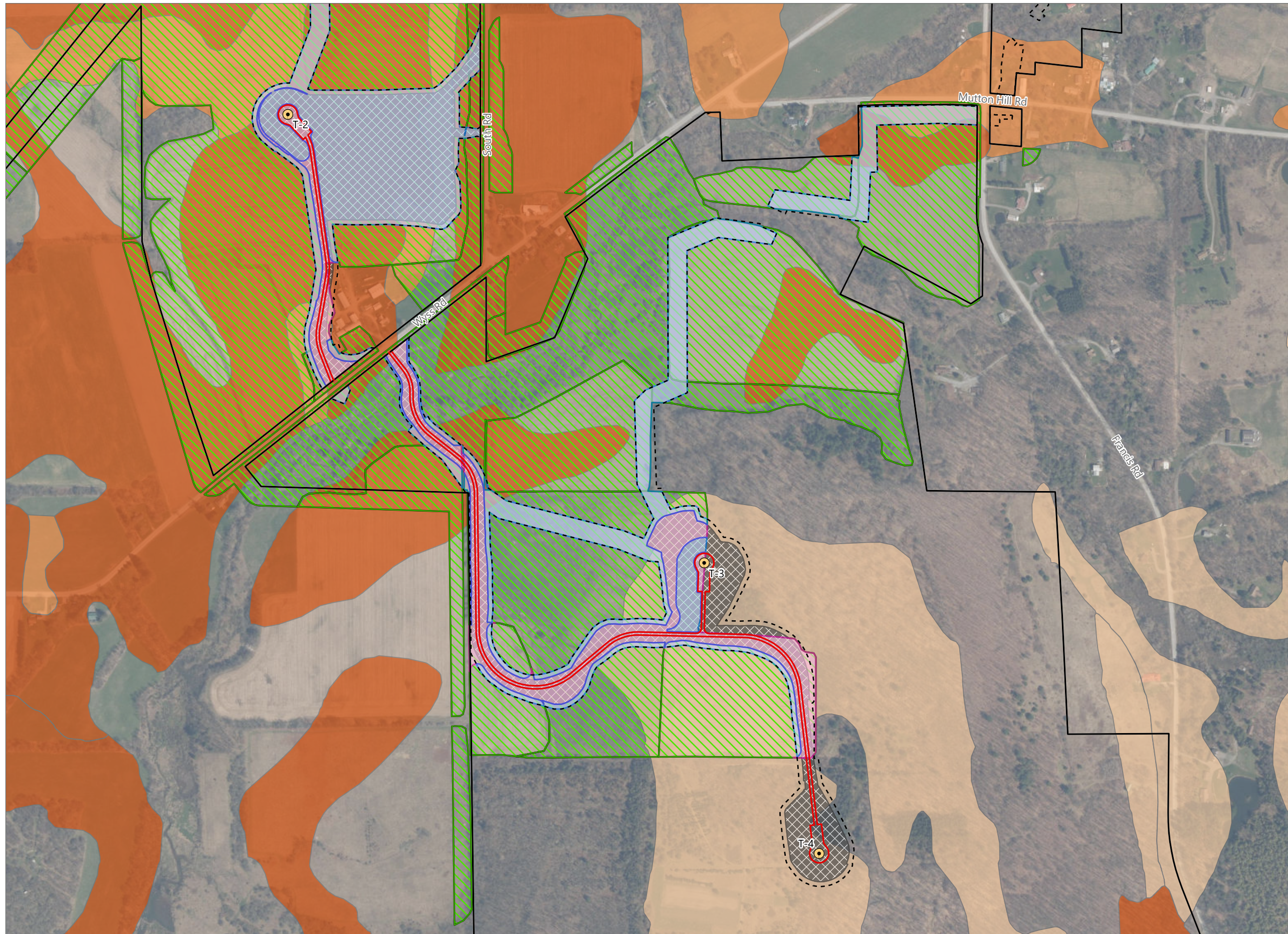


Figure 15-7. Impacts to Active Agricultural Land



### Hoffman Falls Wind

Towns of Eaton, Fenner, Nelson and Smithfield, Madison County, New York

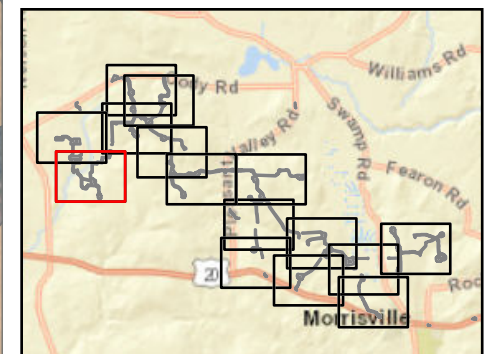
**94-c Permit Application  
Matter No. 23-00038**

- Active Agricultural Land
- Temporary Impacts During Operation\*
- Temporary Impacts During Construction\*\*
- Mineral Soil Group
  - Group 2
  - Group 3
  - Group 4
- Facility Components
  - Wind Turbine
  - Limit of Grading
  - Limit of Impervious Surface
  - Limit of Disturbance
  - Facility Site

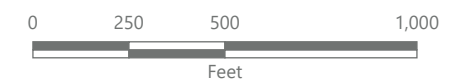
**Note:**

\*Areas impacted by the Facility that will be temporarily taken out of agricultural production during construction and operations.

\*\*Areas impacted by the Facility that will be temporarily taken out of agricultural production until the end of the construction period, at which point they will be restored and returned to agricultural use.

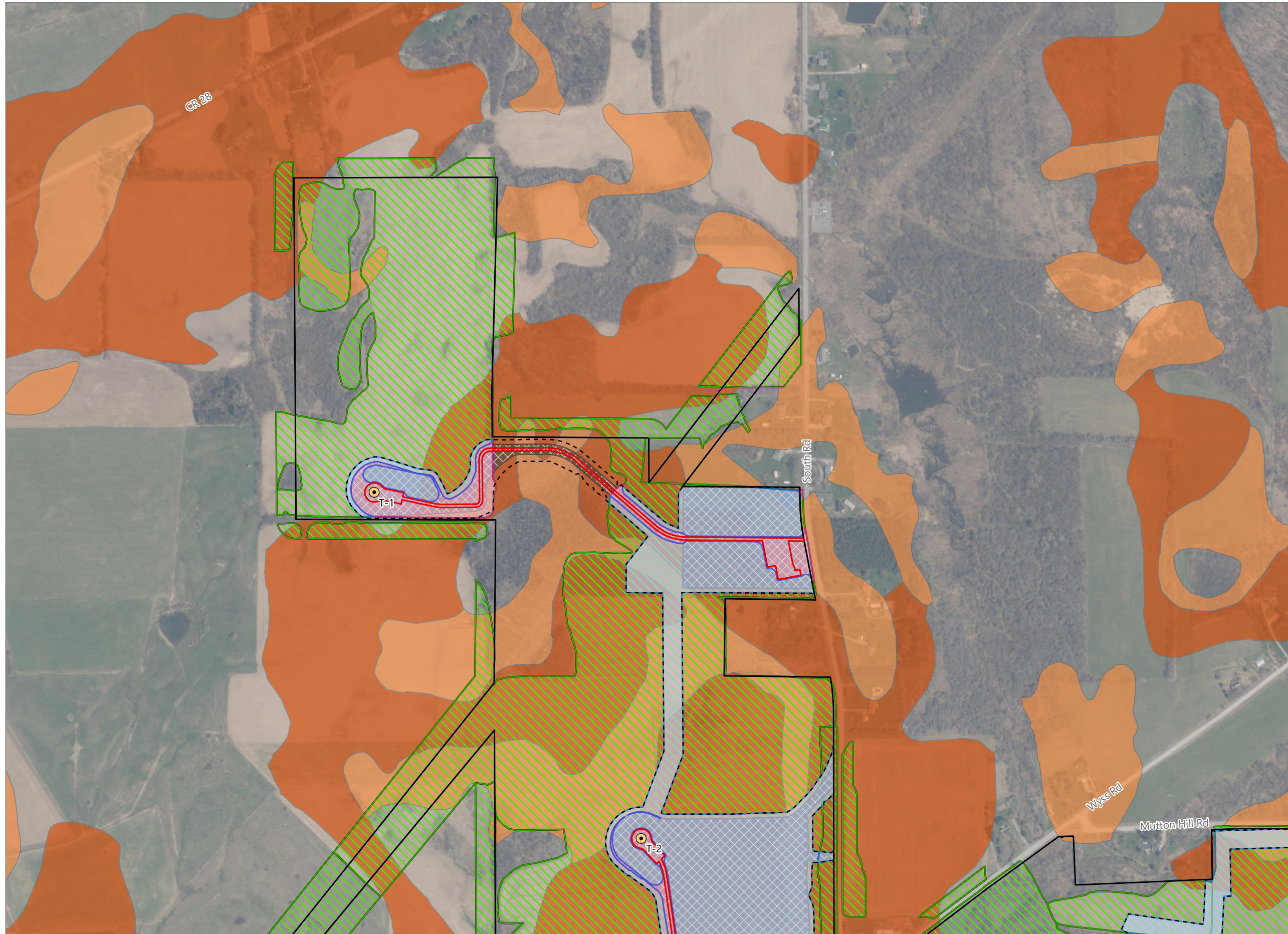


Sheet 1 of 15



Prepared February 7, 2024  
Basemap: USDA NAIP "2022 New York 60cm" orthoimagery map service





### Hoffman Falls Wind

Towns of Eaton, Fenner, Nelson and Smithfield, Madison County, New York

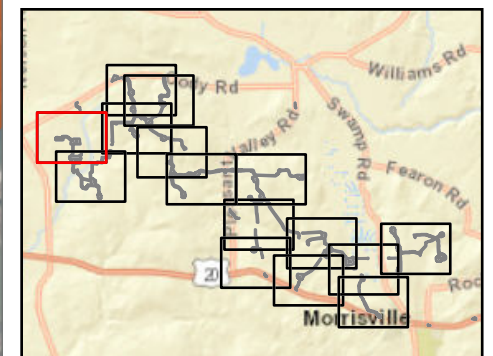
**94-c Permit Application  
Matter No. 23-00038**

- Active Agricultural Land
- Temporary Impacts During Operation\*
- Temporary Impacts During Construction\*\*
- Mineral Soil Group
  - Group 2
  - Group 3
- Facility Components
  - Wind Turbine
  - Limit of Grading
  - Limit of Impervious Surface
  - Limit of Disturbance
  - Facility Site

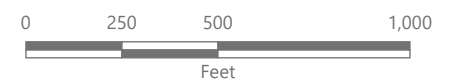
**Note:**

\*Areas impacted by the Facility that will be temporarily taken out of agricultural production during construction and operations.

\*\*Areas impacted by the Facility that will be temporarily taken out of agricultural production until the end of the construction period, at which point they will be restored and returned to agricultural use.

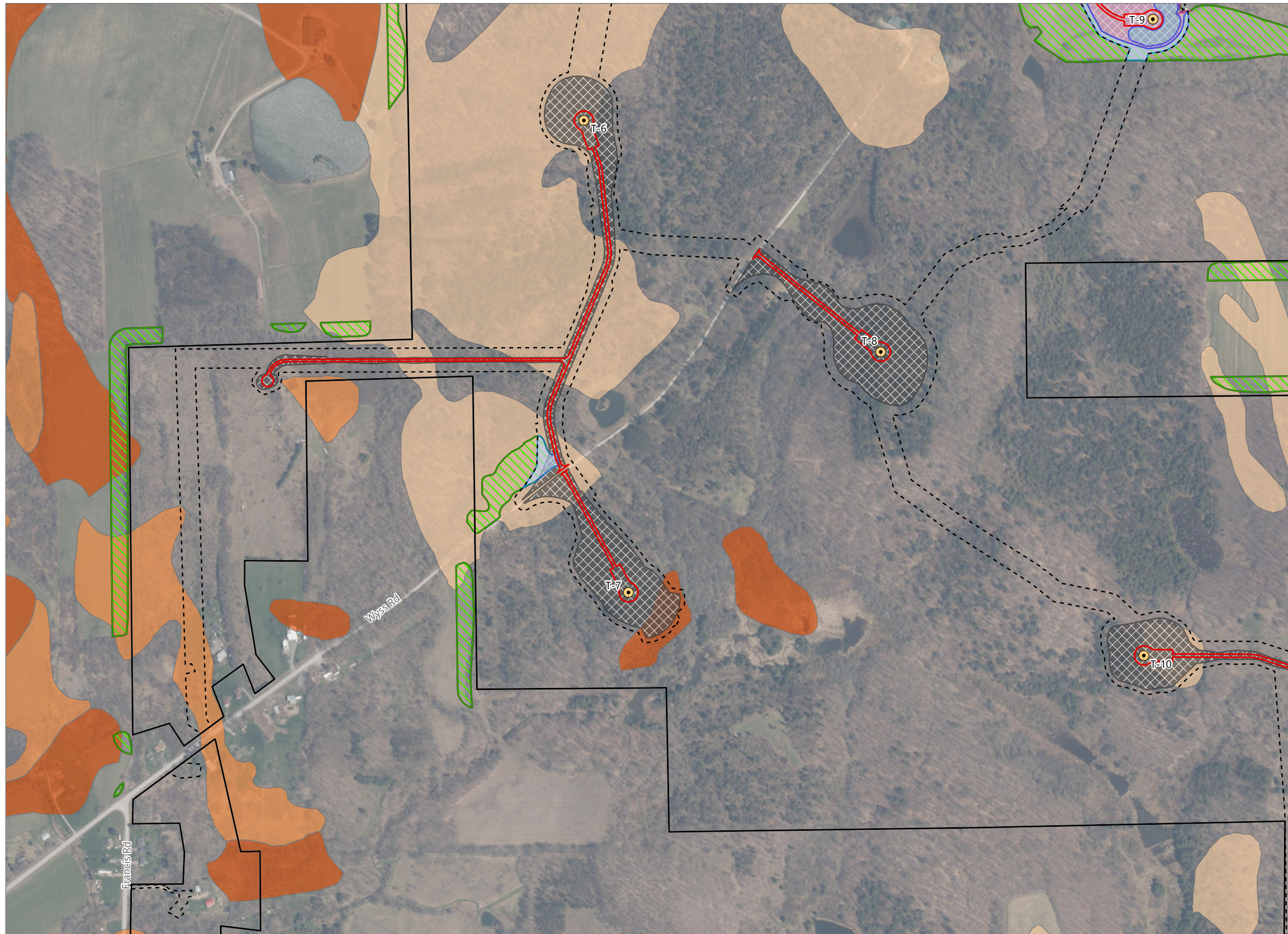


Sheet 2 of 15



Prepared February 7, 2024  
 Basemap: USDA NAIP "2022 New York 60cm" orthoimagery map service





### Hoffman Falls Wind

Towns of Eaton, Fenner, Nelson and Smithfield, Madison County, New York

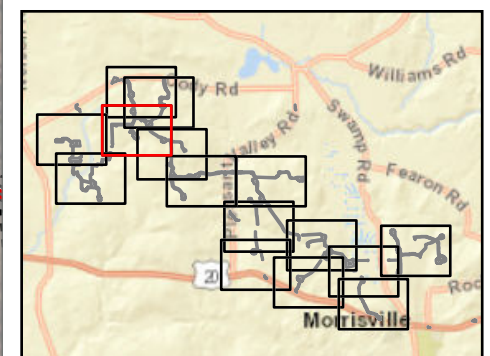
**94-c Permit Application  
Matter No. 23-00038**

- Active Agricultural Land
- Temporary Impacts During Operation\*
- Temporary Impacts During Construction\*\*
- Mineral Soil Group
  - Group 2
  - Group 3
  - Group 4
- Facility Components
  - Wind Turbine
  - Limit of Grading
  - Limit of Impervious Surface
  - Limit of Disturbance
  - Facility Site

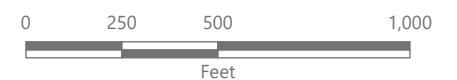
**Note:**

\*Areas impacted by the Facility that will be temporarily taken out of agricultural production during construction and operations.

\*\*Areas impacted by the Facility that will be temporarily taken out of agricultural production until the end of the construction period, at which point they will be restored and returned to agricultural use.

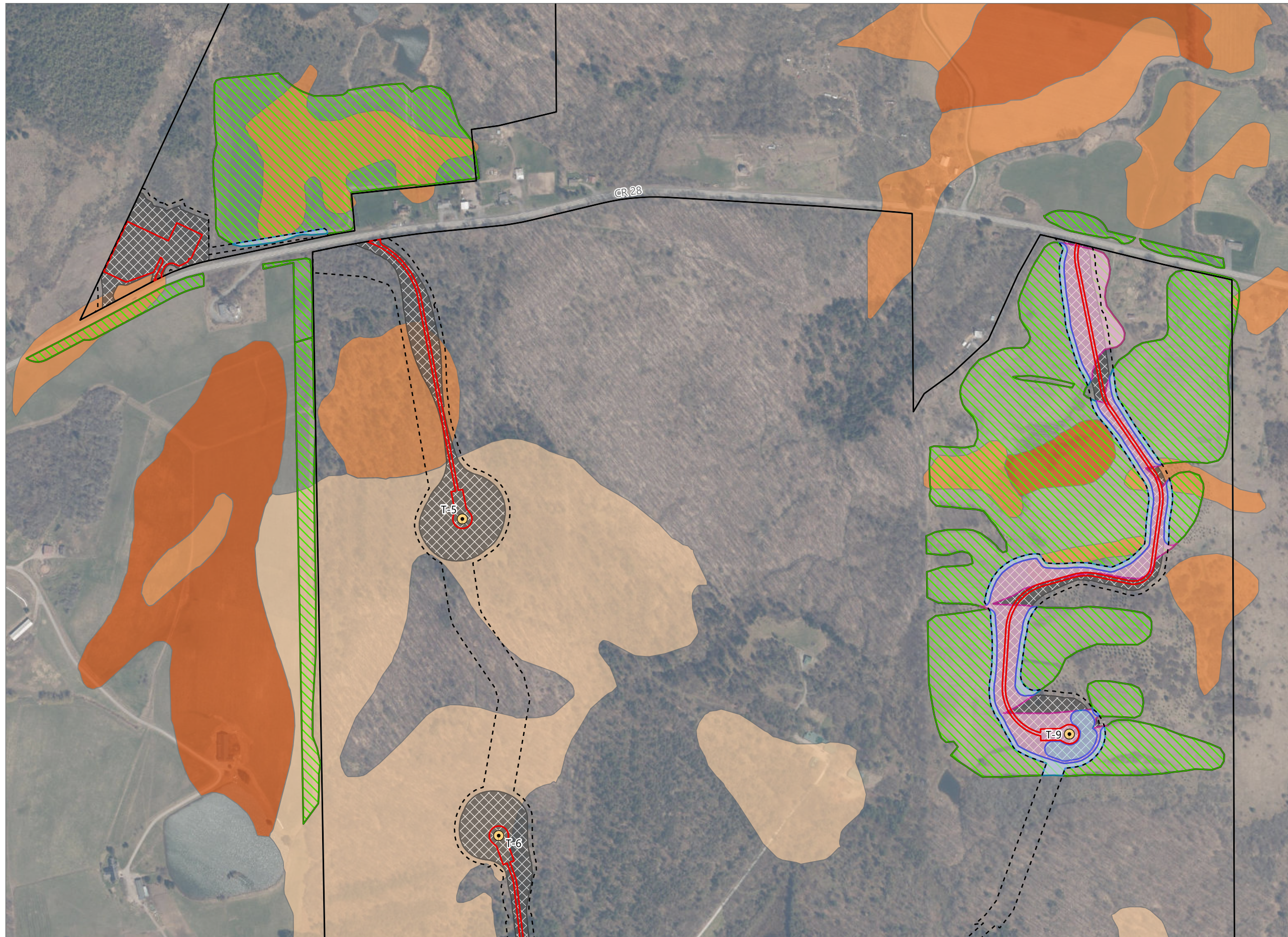


Sheet 3 of 15



Prepared February 7, 2024  
Basemap: USDA NAIP "2022 New York 60cm" orthoimagery map service





### Hoffman Falls Wind

Towns of Eaton, Fenner, Nelson and Smithfield, Madison County, New York

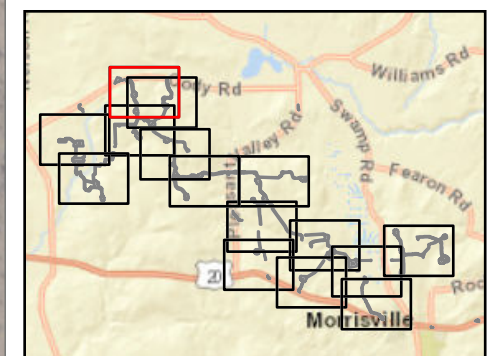
**94-c Permit Application  
Matter No. 23-00038**

- Active Agricultural Land
- Temporary Impacts During Operation\*
- Temporary Impacts During Construction\*\*
- Mineral Soil Group
  - Group 2
  - Group 3
  - Group 4
- Facility Components
  - Wind Turbine
  - Limit of Grading
  - Limit of Impervious Surface
  - Limit of Disturbance
  - Facility Site

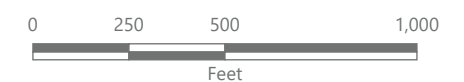
**Note:**

\*Areas impacted by the Facility that will be temporarily taken out of agricultural production during construction and operations.

\*\*Areas impacted by the Facility that will be temporarily taken out of agricultural production until the end of the construction period, at which point they will be restored and returned to agricultural use.



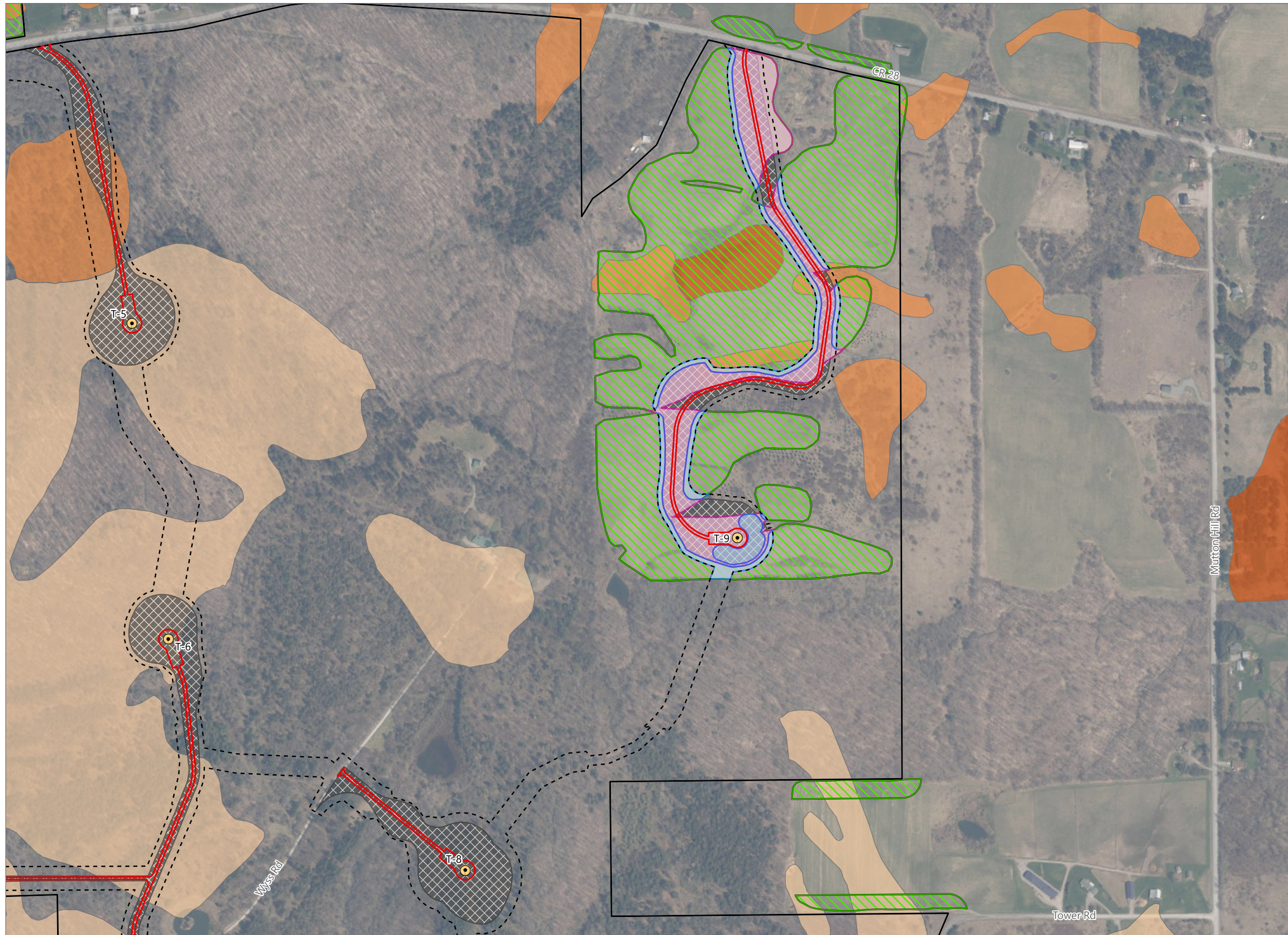
Sheet 4 of 15



Prepared February 7, 2024

Basemap: USDA NAIP "2022 New York 60cm" orthoimagery map service





### Hoffman Falls Wind

Towns of Eaton, Fenner, Nelson and Smithfield, Madison County, New York

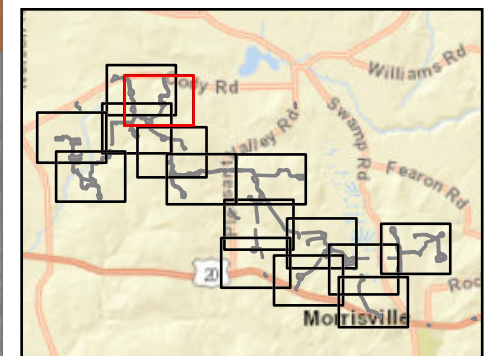
**94-c Permit Application  
Matter No. 23-00038**

- Active Agricultural Land
- Temporary Impacts During Operation\*
- Temporary Impacts During Construction\*\*
- Mineral Soil Group
  - Group 2
  - Group 3
  - Group 4
- Facility Components
  - Wind Turbine
  - Limit of Grading
  - Limit of Impervious Surface
  - Limit of Disturbance
  - Facility Site

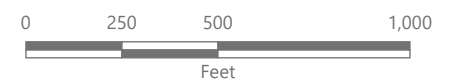
**Note:**

\*Areas impacted by the Facility that will be temporarily taken out of agricultural production during construction and operations.

\*\*Areas impacted by the Facility that will be temporarily taken out of agricultural production until the end of the construction period, at which point they will be restored and returned to agricultural use.

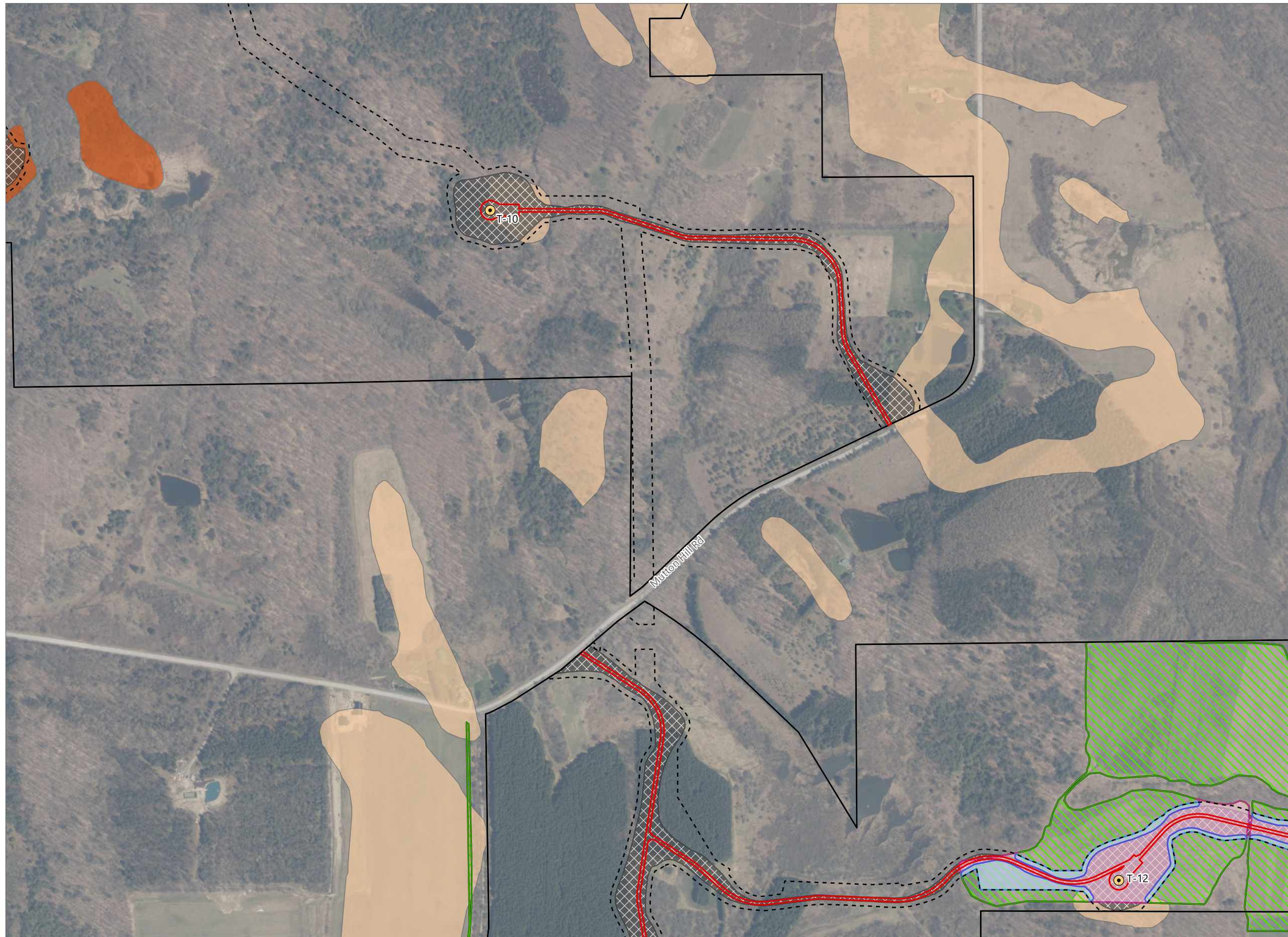


Sheet 5 of 15



Prepared February 7, 2024  
Basemap: USDA NAIP "2022 New York 60cm" orthoimagery map service





### Hoffman Falls Wind

Towns of Eaton, Fenner, Nelson and Smithfield, Madison County, New York

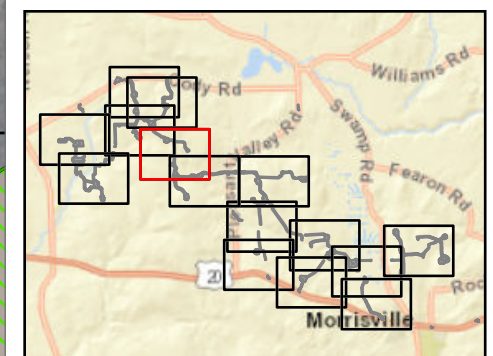
**94-c Permit Application  
Matter No. 23-00038**

- Active Agricultural Land
- Temporary Impacts During Operation\*
- Temporary Impacts During Construction\*\*
- Mineral Soil Group
  - Group 2
  - Group 4
- Facility Components
  - Wind Turbine
  - Limit of Grading
  - Limit of Impervious Surface
  - Limit of Disturbance
  - Facility Site

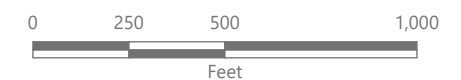
**Note:**

\*Areas impacted by the Facility that will be temporarily taken out of agricultural production during construction and operations.

\*\*Areas impacted by the Facility that will be temporarily taken out of agricultural production until the end of the construction period, at which point they will be restored and returned to agricultural use.

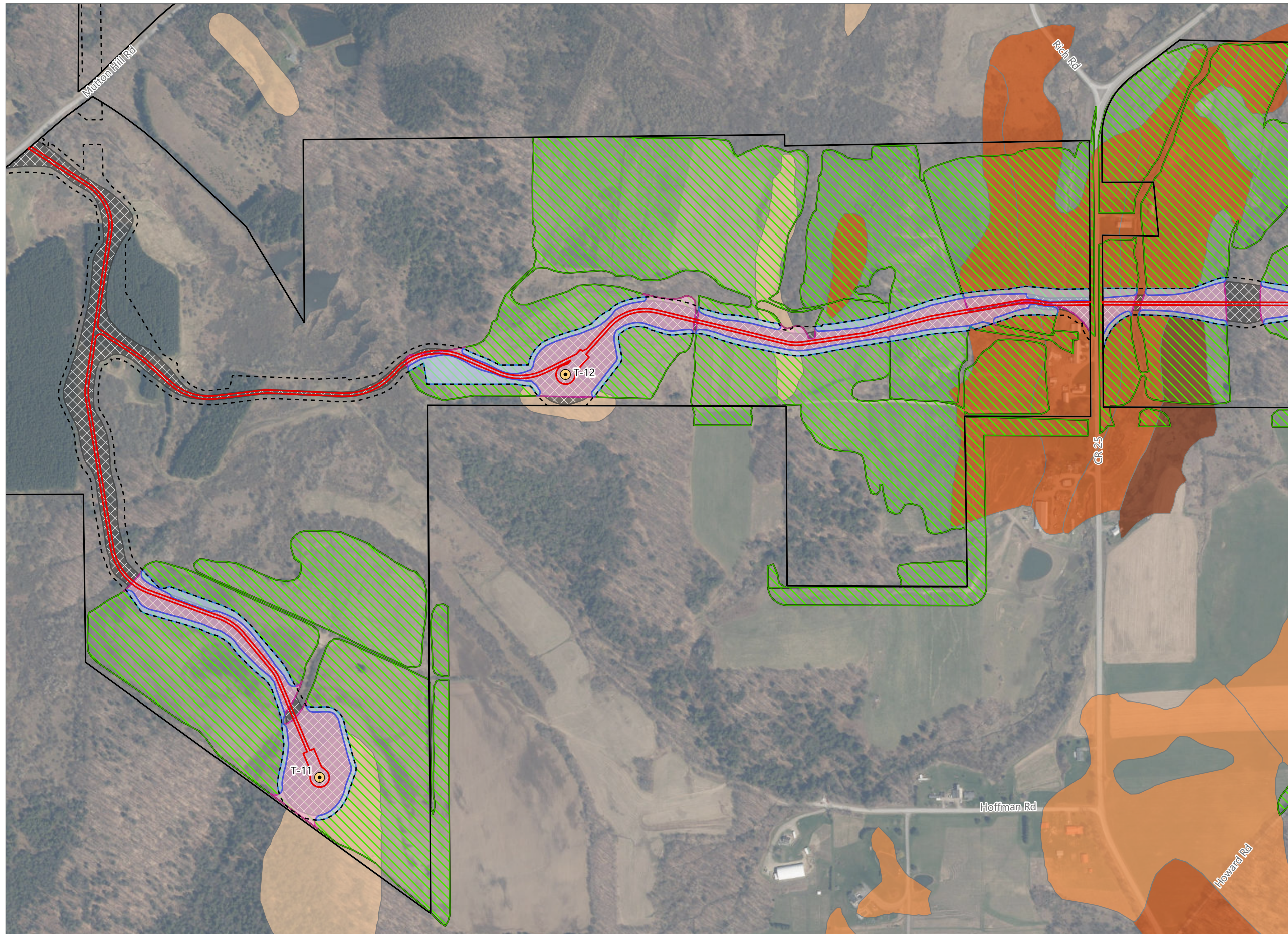


Sheet 6 of 15



Prepared February 7, 2024  
Basemap: USDA NAIP "2022 New York 60cm" orthoimagery map service





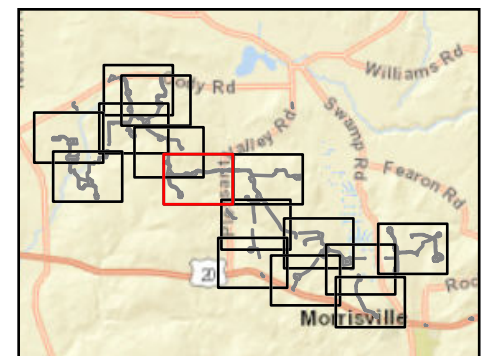
### Hoffman Falls Wind

Towns of Eaton, Fenner, Nelson and Smithfield, Madison County, New York

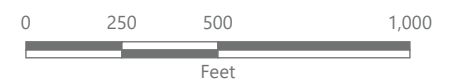
**94-c Permit Application  
Matter No. 23-00038**

- Active Agricultural Land
- Temporary Impacts During Operation\*
- Temporary Impacts During Construction\*\*
- Mineral Soil Group
  - Group 1
  - Group 2
  - Group 3
  - Group 4
- Facility Components
  - Wind Turbine
  - Limit of Grading
  - Limit of Impervious Surface
  - Limit of Disturbance
  - Facility Site

**Note:**  
 \*Areas impacted by the Facility that will be temporarily taken out of agricultural production during construction and operations.  
 \*\*Areas impacted by the Facility that will be temporarily taken out of agricultural production until the end of the construction period, at which point they will be restored and returned to agricultural use.

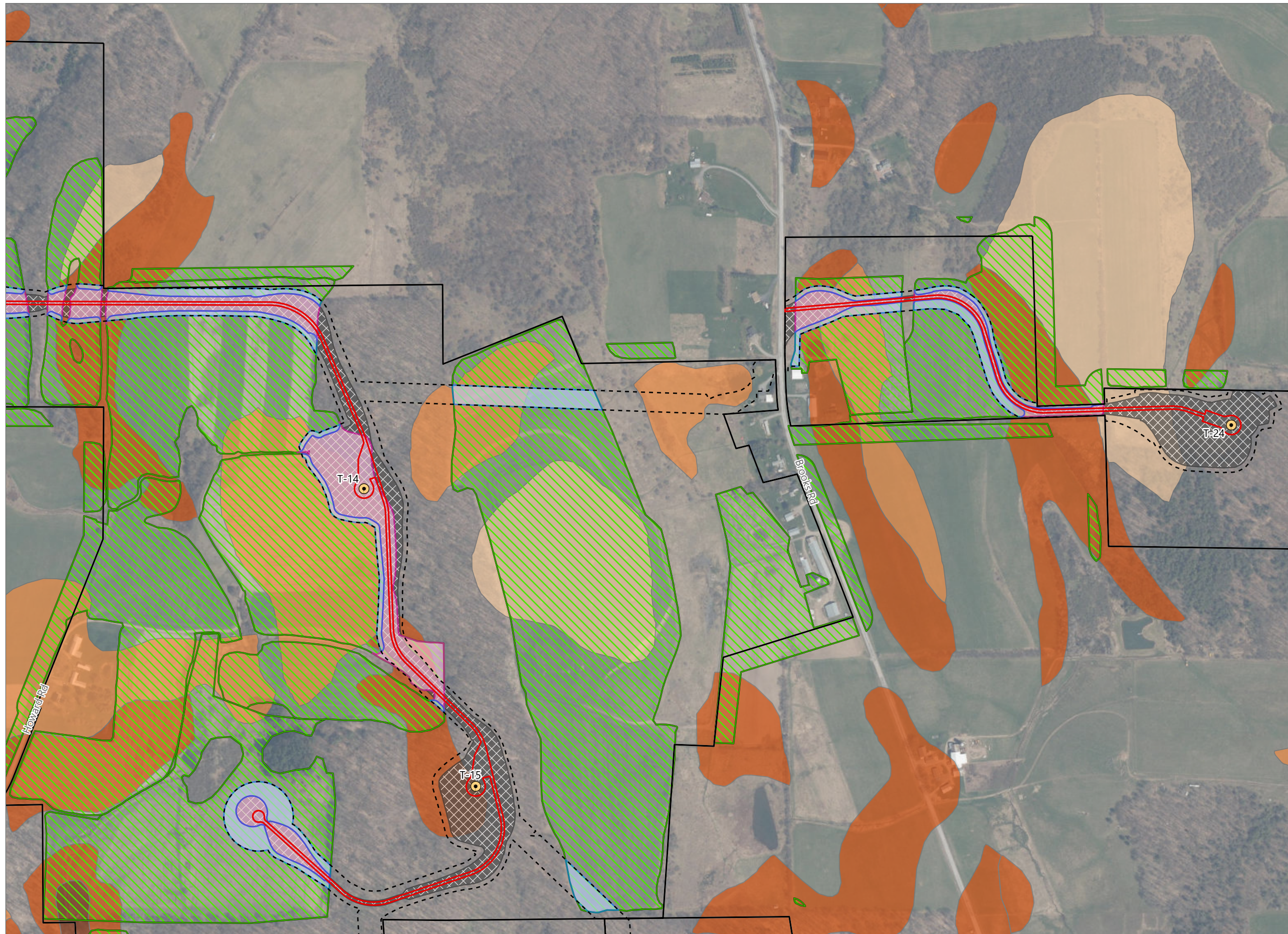


Sheet 7 of 15



Prepared February 7, 2024  
 Basemap: USDA NAIP "2022 New York 60cm" orthoimagery map service





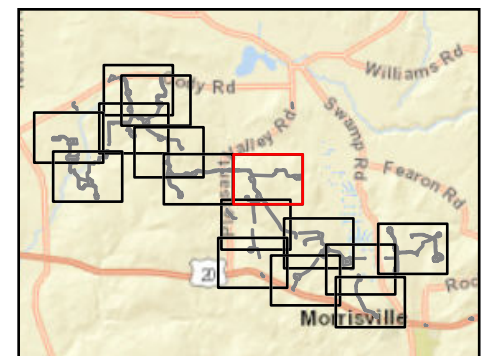
### Hoffman Falls Wind

Towns of Eaton, Fenner, Nelson and Smithfield, Madison County, New York

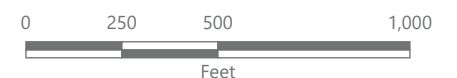
**94-c Permit Application  
Matter No. 23-00038**

- Active Agricultural Land
  - Temporary Impacts During Operation\*
  - Temporary Impacts During Construction\*\*
- Mineral Soil Group
- Group 1
  - Group 2
  - Group 3
  - Group 4
- Facility Components
- Wind Turbine
  - Limit of Grading
  - Limit of Impervious Surface
  - Limit of Disturbance
  - Facility Site

Note:  
 \*Areas impacted by the Facility that will be temporarily taken out of agricultural production during construction and operations.  
 \*\*Areas impacted by the Facility that will be temporarily taken out of agricultural production until the end of the construction period, at which point they will be restored and returned to agricultural use.



Sheet 8 of 15



Prepared February 7, 2024  
 Basemap: USDA NAIP "2022 New York 60cm" orthoimagery map service





### Hoffman Falls Wind

Towns of Eaton, Fenner, Nelson and Smithfield, Madison County, New York

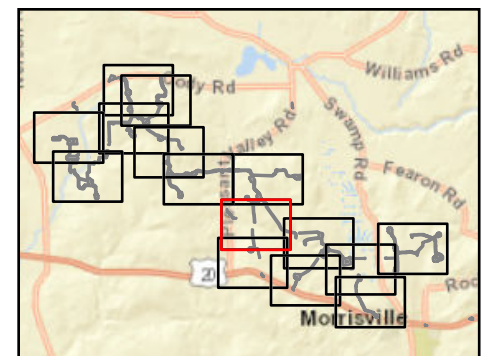
**94-c Permit Application  
Matter No. 23-00038**

- Active Agricultural Land
- Temporary Impacts During Operation\*
- Temporary Impacts During Construction\*\*
- Mineral Soil Group
  - Group 1
  - Group 2
  - Group 3
  - Group 4
- Facility Components
  - Wind Turbine
  - Limit of Grading
  - Limit of Impervious Surface
  - Limit of Disturbance
  - Facility Site

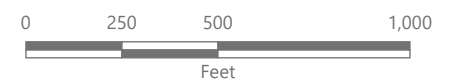
**Note:**

\*Areas impacted by the Facility that will be temporarily taken out of agricultural production during construction and operations.

\*\*Areas impacted by the Facility that will be temporarily taken out of agricultural production until the end of the construction period, at which point they will be restored and returned to agricultural use.



Sheet 9 of 15



Prepared February 7, 2024  
Basemap: USDA NAIP "2022 New York 60cm" orthoimagery map service





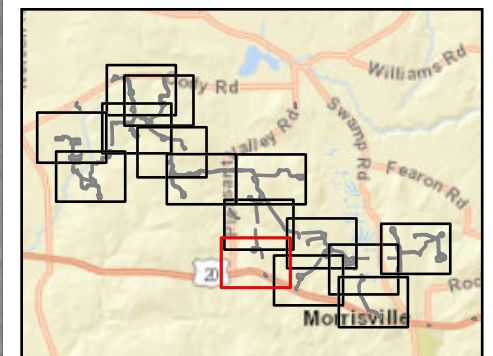
### Hoffman Falls Wind

Towns of Eaton, Fenner, Nelson and Smithfield, Madison County, New York

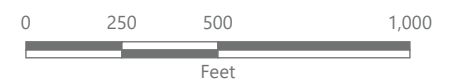
**94-c Permit Application  
Matter No. 23-00038**

- Active Agricultural Land
- Mineral Soil Group
  - Group 1
  - Group 2
  - Group 3
  - Group 4
- Facility Components
  - Wind Turbine
  - Limit of Grading
  - Limit of Impervious Surface
  - Limit of Disturbance
  - Facility Site

**Note:**  
 \*Areas impacted by the Facility that will be temporarily taken out of agricultural production during construction and operations.  
 \*\*Areas impacted by the Facility that will be temporarily taken out of agricultural production until the end of the construction period, at which point they will be restored and returned to agricultural use.



Sheet 10 of 15



Prepared February 7, 2024  
 Basemap: USDA NAIP "2022 New York 60cm" orthoimagery map service





### Hoffman Falls Wind

Towns of Eaton, Fenner, Nelson and Smithfield, Madison County, New York

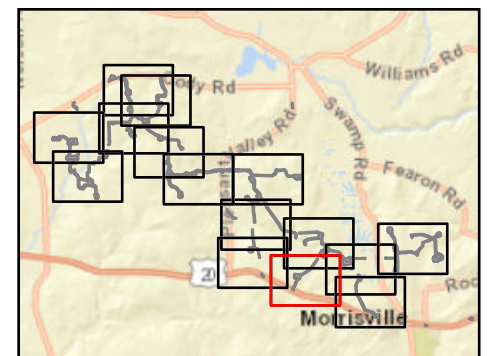
**94-c Permit Application  
Matter No. 23-00038**

- Active Agricultural Land
  - Temporary Impacts During Operation\*
  - Temporary Impacts During Construction\*\*
- Mineral Soil Group
- Group 1
  - Group 2
  - Group 3
  - Group 4
- Facility Components
- Wind Turbine
  - Limit of Grading
  - Limit of Impervious Surface
  - Limit of Disturbance
  - Facility Site

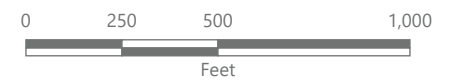
**Note:**

\*Areas impacted by the Facility that will be temporarily taken out of agricultural production during construction and operations.

\*\*Areas impacted by the Facility that will be temporarily taken out of agricultural production until the end of the construction period, at which point they will be restored and returned to agricultural use.



Sheet 11 of 15



Prepared February 7, 2024  
Basemap: USDA NAIP "2022 New York 60cm" orthoimagery map service





### Hoffman Falls Wind

Towns of Eaton, Fenner, Nelson and Smithfield, Madison County, New York

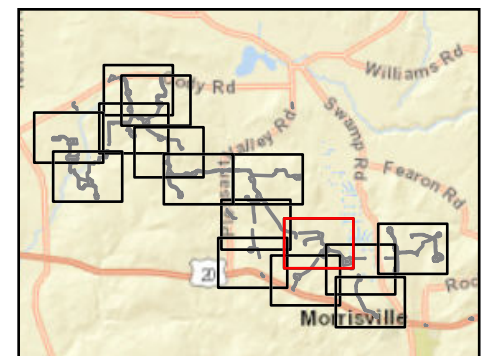
**94-c Permit Application  
Matter No. 23-00038**

- Active Agricultural Land
- Temporary Impacts During Operation\*
- Temporary Impacts During Construction\*\*
- Mineral Soil Group
  - Group 1
  - Group 2
  - Group 3
  - Group 4
- Facility Components
  - Wind Turbine
  - Limit of Grading
  - Limit of Impervious Surface
  - Limit of Disturbance
  - Facility Site

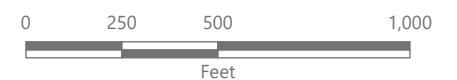
**Note:**

\*Areas impacted by the Facility that will be temporarily taken out of agricultural production during construction and operations.

\*\*Areas impacted by the Facility that will be temporarily taken out of agricultural production until the end of the construction period, at which point they will be restored and returned to agricultural use.



Sheet 12 of 15



Prepared February 7, 2024  
Basemap: USDA NAIP "2022 New York 60cm" orthoimagery map service





### Hoffman Falls Wind

Towns of Eaton, Fenner, Nelson and Smithfield, Madison County, New York

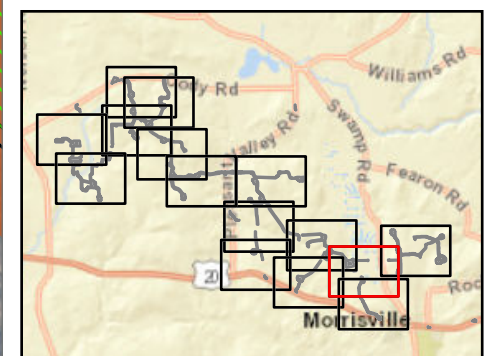
**94-c Permit Application  
Matter No. 23-00038**

- Active Agricultural Land
- Temporary Impacts During Operation\*
- Temporary Impacts During Construction\*\*
- Mineral Soil Group
  - Group 1
  - Group 2
  - Group 3
- Facility Components
  - Wind Turbine
  - Limit of Grading
  - Limit of Impervious Surface
  - Limit of Disturbance
  - Facility Site

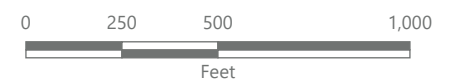
**Note:**

\*Areas impacted by the Facility that will be temporarily taken out of agricultural production during construction and operations.

\*\*Areas impacted by the Facility that will be temporarily taken out of agricultural production until the end of the construction period, at which point they will be restored and returned to agricultural use.

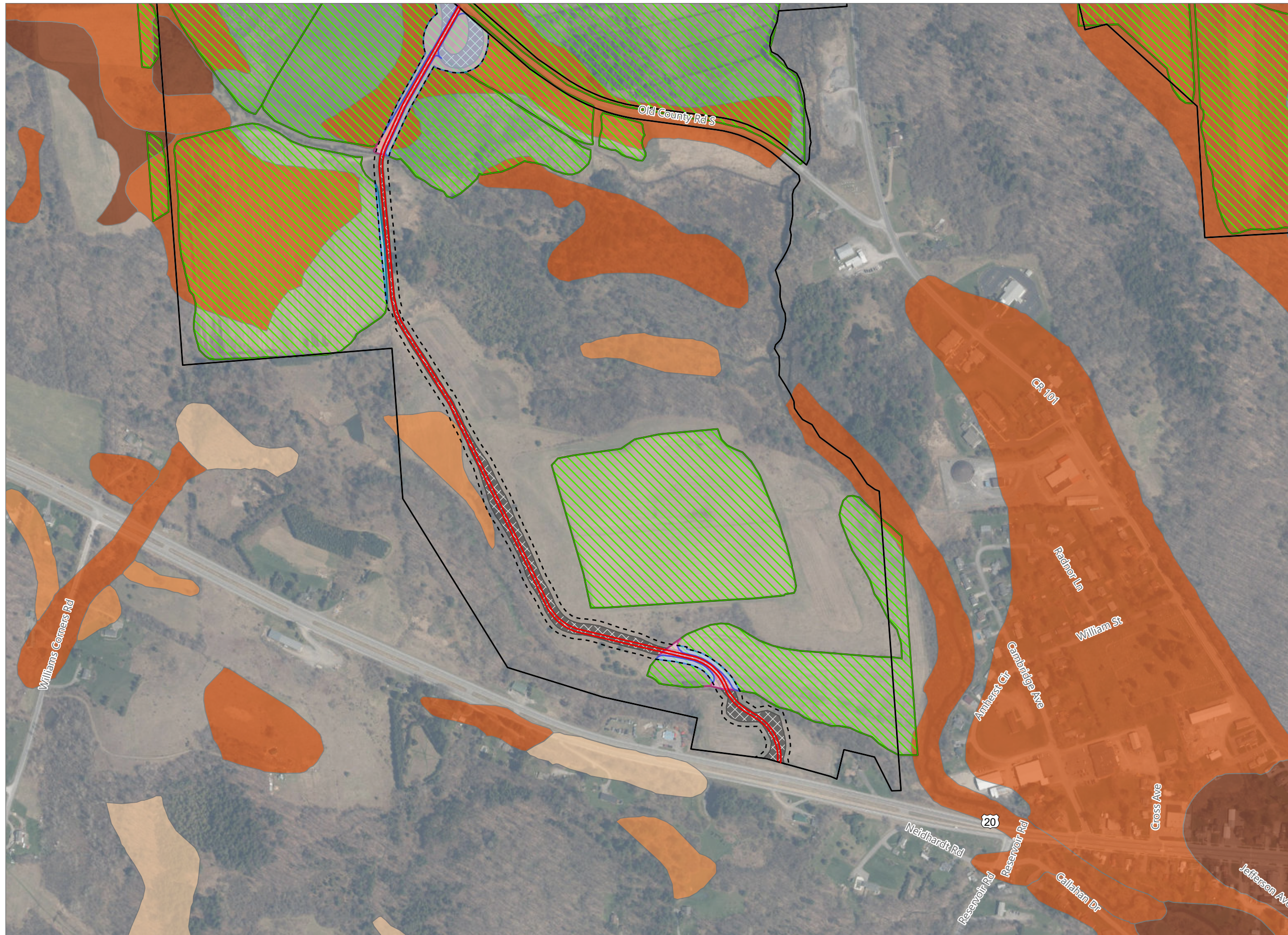


Sheet 13 of 15



Prepared February 7, 2024  
Basemap: USDA NAIP "2022 New York 60cm" orthoimagery map service





### Hoffman Falls Wind

Towns of Eaton, Fenner, Nelson and Smithfield, Madison County, New York

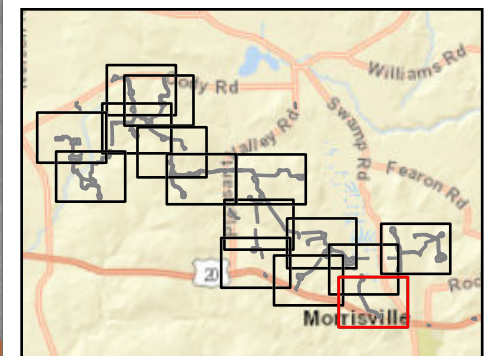
**94-c Permit Application  
Matter No. 23-00038**

- Active Agricultural Land
- Temporary Impacts During Operation\*
- Temporary Impacts During Construction\*\*
- Mineral Soil Group
  - Group 1
  - Group 2
  - Group 3
  - Group 4
- Limit of Grading
- Limit of Impervious Surface
- Limit of Disturbance
- Facility Site

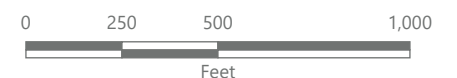
**Note:**

\*Areas impacted by the Facility that will be temporarily taken out of agricultural production during construction and operations.

\*\*Areas impacted by the Facility that will be temporarily taken out of agricultural production until the end of the construction period, at which point they will be restored and returned to agricultural use.

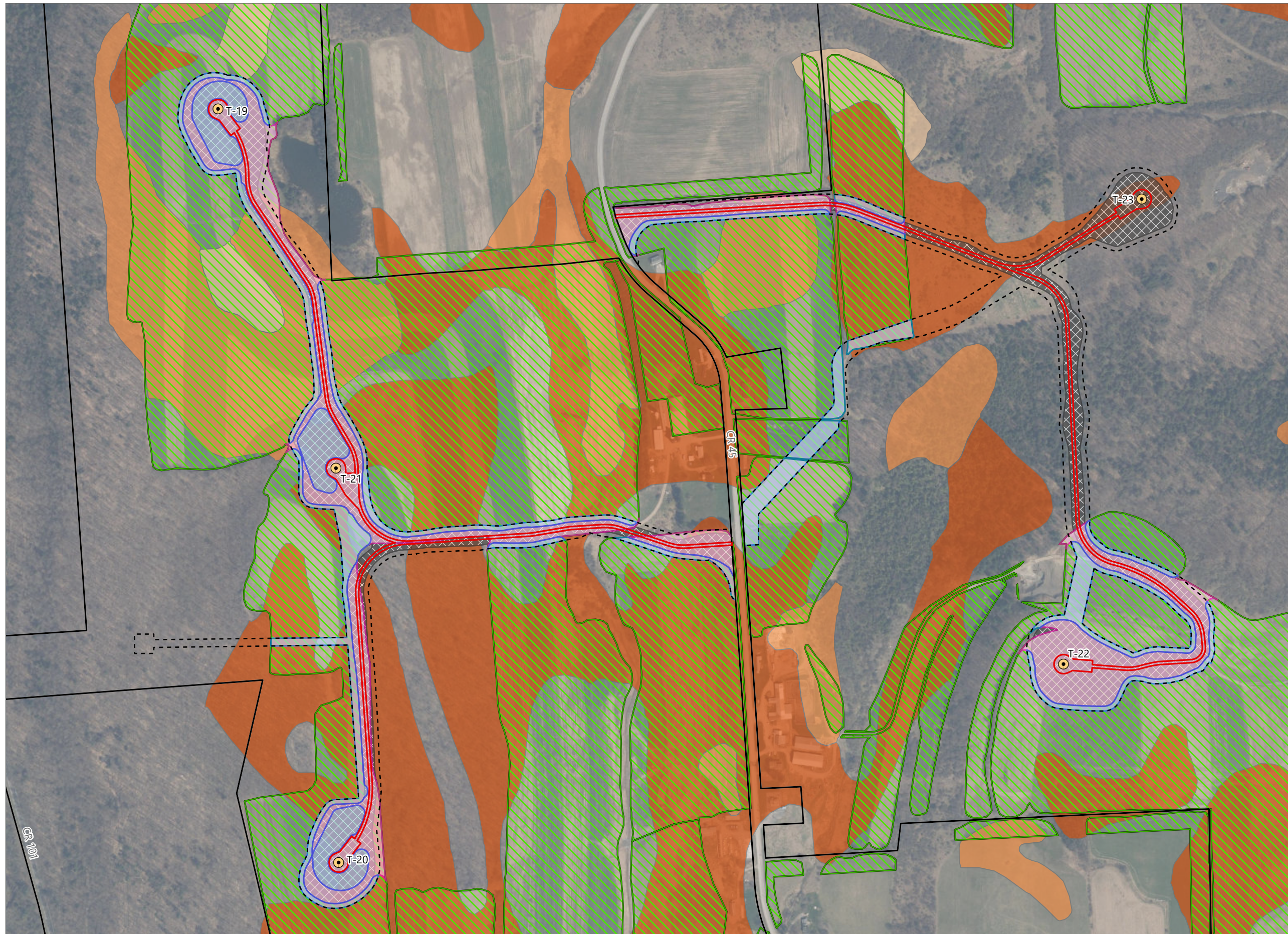


Sheet 14 of 15



Prepared February 7, 2024  
Basemap: USDA NAIP "2022 New York 60cm" orthomagey map service





### Hoffman Falls Wind

Towns of Eaton, Fenner, Nelson and Smithfield, Madison County, New York

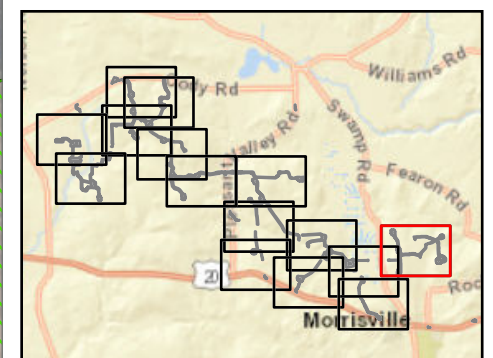
**94-c Permit Application  
Matter No. 23-00038**

- Active Agricultural Land
  - Temporary Impacts During Operation\*
  - Temporary Impacts During Construction\*\*
- Mineral Soil Group
- Group 2
  - Group 3
  - Group 4
- Facility Components
- Wind Turbine
  - Limit of Grading
  - Limit of Impervious Surface
  - Limit of Disturbance
  - Facility Site

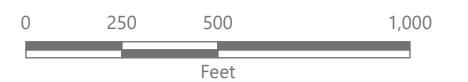
**Note:**

\*Areas impacted by the Facility that will be temporarily taken out of agricultural production during construction and operations.

\*\*Areas impacted by the Facility that will be temporarily taken out of agricultural production until the end of the construction period, at which point they will be restored and returned to agricultural use.



Sheet 15 of 15



Prepared February 7, 2024  
Basemap: USDA NAIP "2022 New York 60cm" orthoimagery map service