



Note: The image above is a panorama photograph taken from Bliss Road in the Town of Nelson panning clockwise from north (left) to southeast (right). The green rectangle represents the extent of the simulated photograph.

VIEWPOINT 41

Bliss Road

VIEWPOINT INFORMATION

Location: Bliss Road
Town: Nelson
County: Madison
Latitude: 42.90950° N
Longitude: 75.69829° W

LOCATION INFORMATION

Distance Zone Represented in View: Middle ground
Viewer Distance*: 0.6 mile
Landscape Similarity Zone: Agricultural/Rural Residential

Viewer/User Group(s): Local Residents, Tourists/
 Recreational Users

Visually Sensitive Resource(s): State University of New York College of Agriculture and Technology at Morrisville - Equine Center

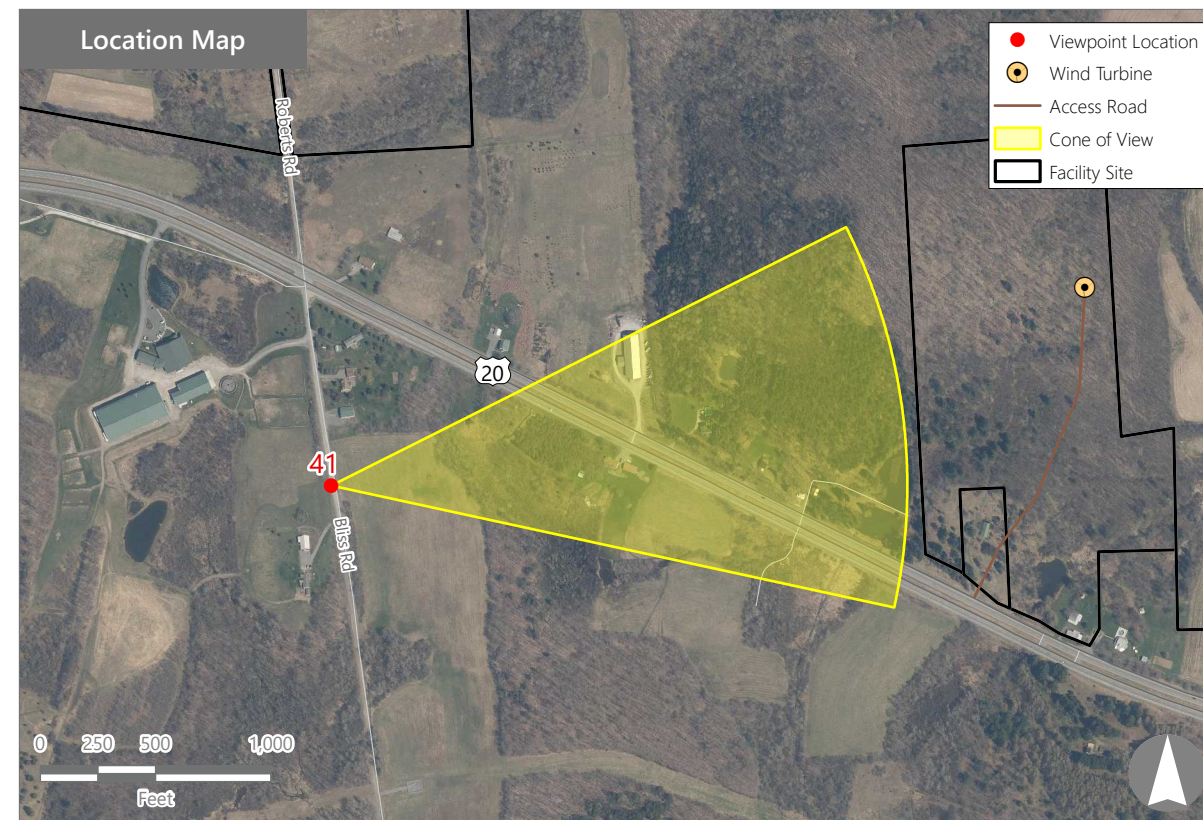
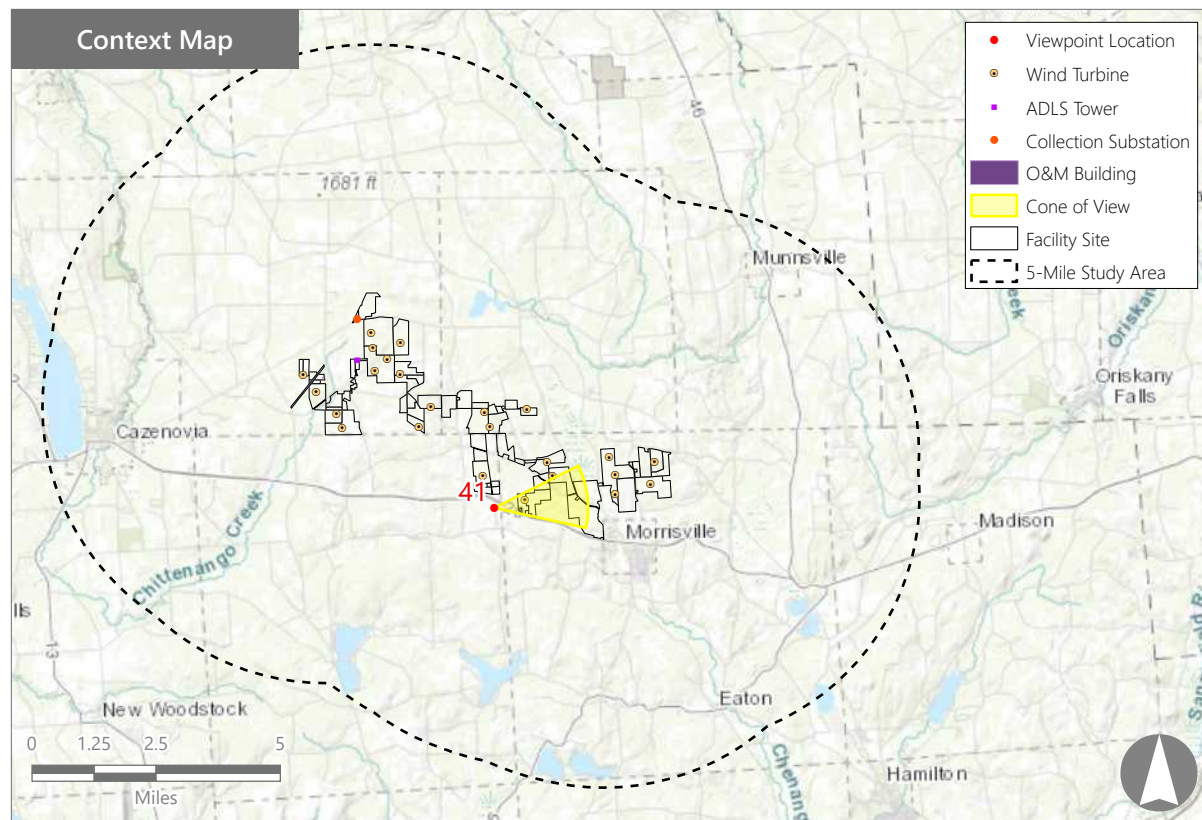
PHOTOGRAPH INFORMATION

Date: August 31, 2023
Time: 2:28 PM
Camera: Canon EOS 5D Mark IV
Resolution: 24 Megapixels
Lens Focal Length (35mm equivalent): 50 mm
Camera Elevation: 1,701 feet
Field of View: 39 degrees
Direction of View: East
Printed Size: 10" x 15"
Viewing Distance:** 21"

NOTES

*Distance as measured from the viewpoint to the closest wind turbine generator within the simulated photograph's field of view

**The simulation is at the correct perspective when printed on an 11 inch by 17 inch sheet at full scale, and viewed approximately 21 inches from the eye of the viewer.



Hoffman Falls Wind Project

Towns of Eaton, Fenner, Nelson, and Smithfield, Madison County, New York

Visual Impact Assessment
 Appendix 8-A

Viewpoint Sensitivity¹:

Scenic Quality:

- Low
- Moderate
- High

Viewer Exposure

Frequency:

- Rare
- Occasional
- Regular/Repeated

Duration of View:

- Short/Brief/Fleeting
- Moderate
- Long

¹Viewpoint Sensitivity information is gathered from rating panel results. Scenic Quality is an average based on Low = 1, Moderate = 2, High = 3. Viewer Exposure reflects all those selected by the review panel.

Contrast Rating Scores²:

Component	Score		Contrast Rating
	Install		
Landform	2.3		Moderate/Appreciable
Vegetation	2.2		Moderate
Land Use	2.3		Moderate/Appreciable
Water	N/A		N/A
Sky	2.3		Moderate/Appreciable
Viewer Activity	2.3		Moderate/Appreciable
AVERAGE	2.3		Moderate/Appreciable

² Contrast Rating Scale: 0.0 - 0.2 (Insignificant), 0.3 - 0.7 (Insignificant/Minimal), 0.8 - 1.2 (Minimal), 1.3 - 1.7 (Minimal/Moderate), 1.8 - 2.2 (Moderate), 2.3 - 2.7 (Moderate/Appreciable), 2.8 - 3.2 (Appreciable) 3.3 - 3.7 (Appreciable/Strong), 3.8 - 4.0 (Strong).

Contrast Rating - Lowest and Highest Scores:

Component	Post - Install	
	Score	
	Low	High
Landform	1.0	3.0
Vegetation	1.5	3.0
Land Use	2.0	3.0
Water	NA	NA
Sky	2.0	2.5
Viewer Activity	2.0	3.0

Existing View



Proposed View (Post Installation)



Existing View

Viewpoint 41 is located on Bliss Road in the Town of Madison, approximately 0.6 miles from the nearest proposed wind turbine that would be visible in the selected photo's field of view. This viewpoint is located in the Agricultural/Rural Residential LSZ and is representative of views available to local residents and users of the SUNY Morrisville Equine Center, south of Route 20. The landscape in this area is a mix of rolling fields and forests and the selected view to the east from this location includes an unmowed meadow backed by a forested hillside where glimpses of building rooftops are occasionally visible. The meadow descends from the roadside in the immediate foreground to the edge of the woods in the middle ground. From the woods edge, the forested hillside rises quickly and blocks views of more distant landscape features. The woods line and horizon line are relatively flat, and the selected view lacks any developed features/focal points. As a result, the rating panel indicated that this view has moderate to high scenic quality.

Proposed View

With the proposed Project in place, a single large wind turbine projects into the sky well above the hilltop. This turbine is relatively unscreened and close to the viewer, allowing details of its structure to be easily observed. At this distance, the turbine's scale contrast with the existing landform and vegetation is notable, and it becomes a dominant focal point in the view. Along with this nearby turbine, portions of additional, more distant turbines (in some cases just blade tips) are visible above the hilltop. These turbines add a degree of visual clutter, but also give the view a greater sense of depth and add elements of visual interest. As with the previous viewpoints, views of existing wind turbines are available throughout this area, and distance from a majority of the proposed turbines will limit changes to the character and scenic quality of the view. Although the contrast is indicated to be moderate to appreciable this view will be available to a limited number of viewers.

Hoffman Falls Wind Project

Towns of Eaton, Fenner, Nelson, and Smithfield, Madison County, New York

EXISTING VIEW



VIEWPOINT 41
Bliss Road

0 1 in 2 in
This scale is designed to insure the simulation images are printed at the intended size.

Hoffman Falls Wind Project
Towns of Eaton, Fenner, Nelson, and Smithfield, Madison County, New York

EDR

Note: Printed at actual size, the existing view image is 15 inches wide by 10 inches high. At this size and focal length, the existing view image should be viewed from a distance 21 inches from the eye of the viewer.

PHOTOSIMULATION



VIEWPOINT 41

Bliss Road

0 1 in 2 in

This scale is designed to insure the simulation images are printed at the intended size.

Hoffman Falls Wind Project

Towns of Eaton, Fenner, Nelson, and Smithfield, Madison County, New York

EDR

Note: Printed at actual size, the resulting simulation image is 15 inches wide by 10 inches high. At this size and focal length, the simulation should be viewed from a distance 21 inches from the eye of the viewer.