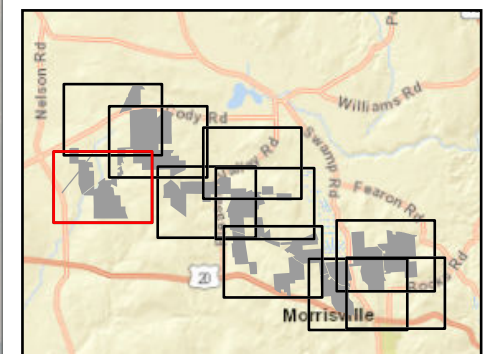


### Hoffman Falls Wind

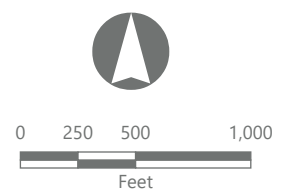
Towns of Eaton, Fenner, Nelson and Smithfield, Madison County, New York

**94-c Permit Application**  
**Matter No. 23-00038**

- Wind Turbine
- Access Road
- Collection Line
- Laydown Area
- O&M Building
- Limit of Grading
- Limit of Tree Clearing
- Limit of Impervious Surface
- Limit of Disturbance
- Facility Site



Sheet 1 of 10






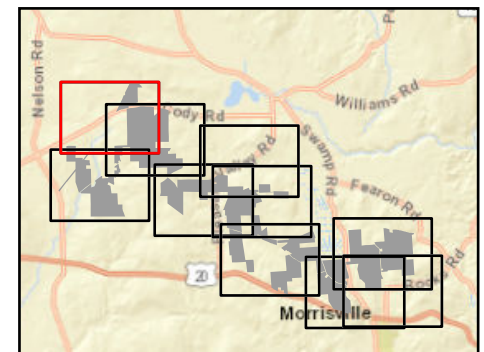
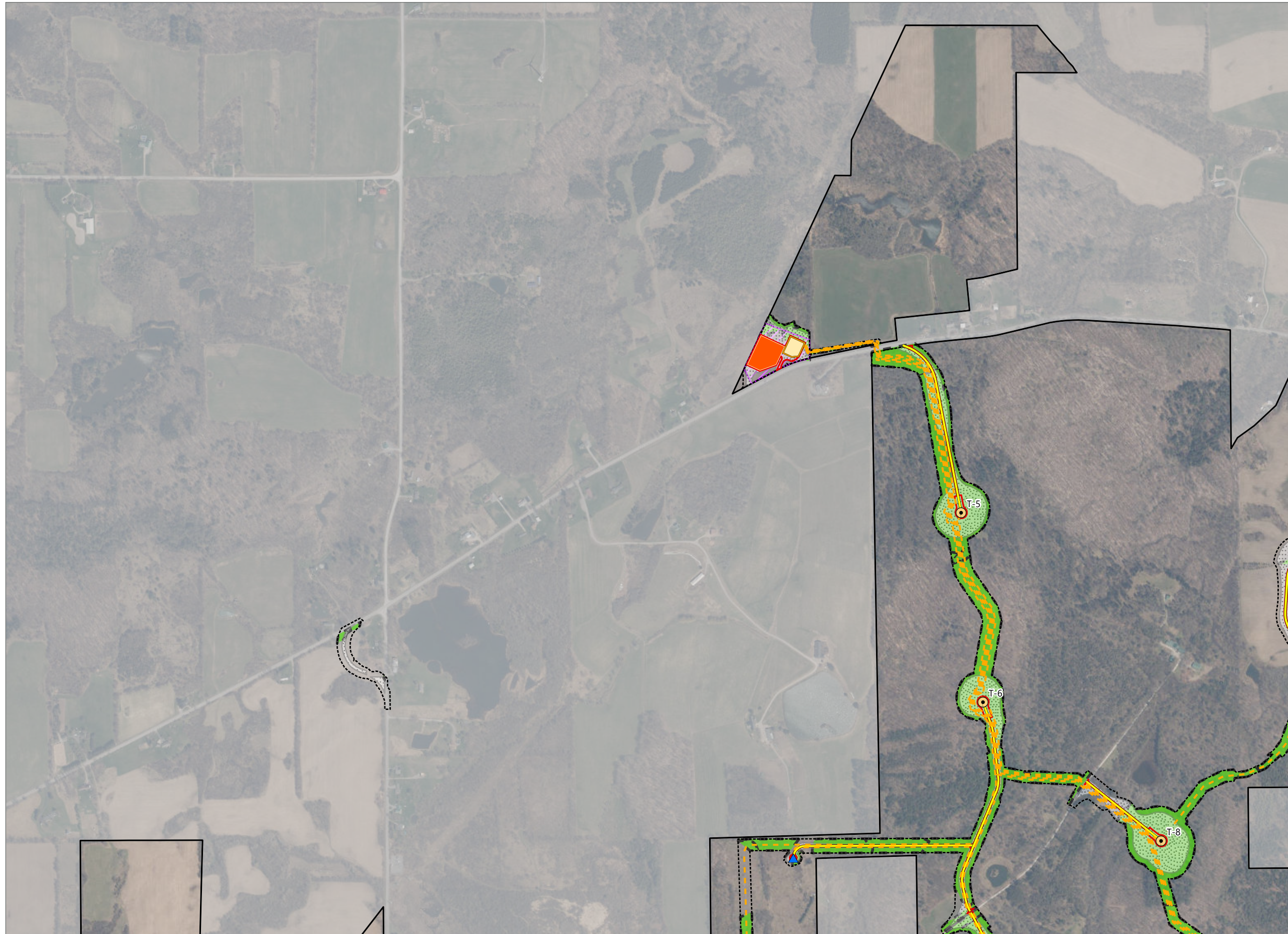
Prepared February 7, 2024  
Basemap: USDA NAIP "2022 New York 60cm" orthoimagery map service

### Hoffman Falls Wind

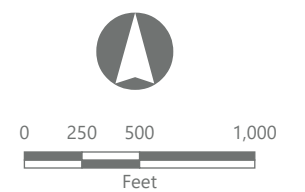
Towns of Eaton, Fenner, Nelson and  
Smithfield, Madison County,  
New York

**94-c Permit Application**  
**Matter No. 23-00038**

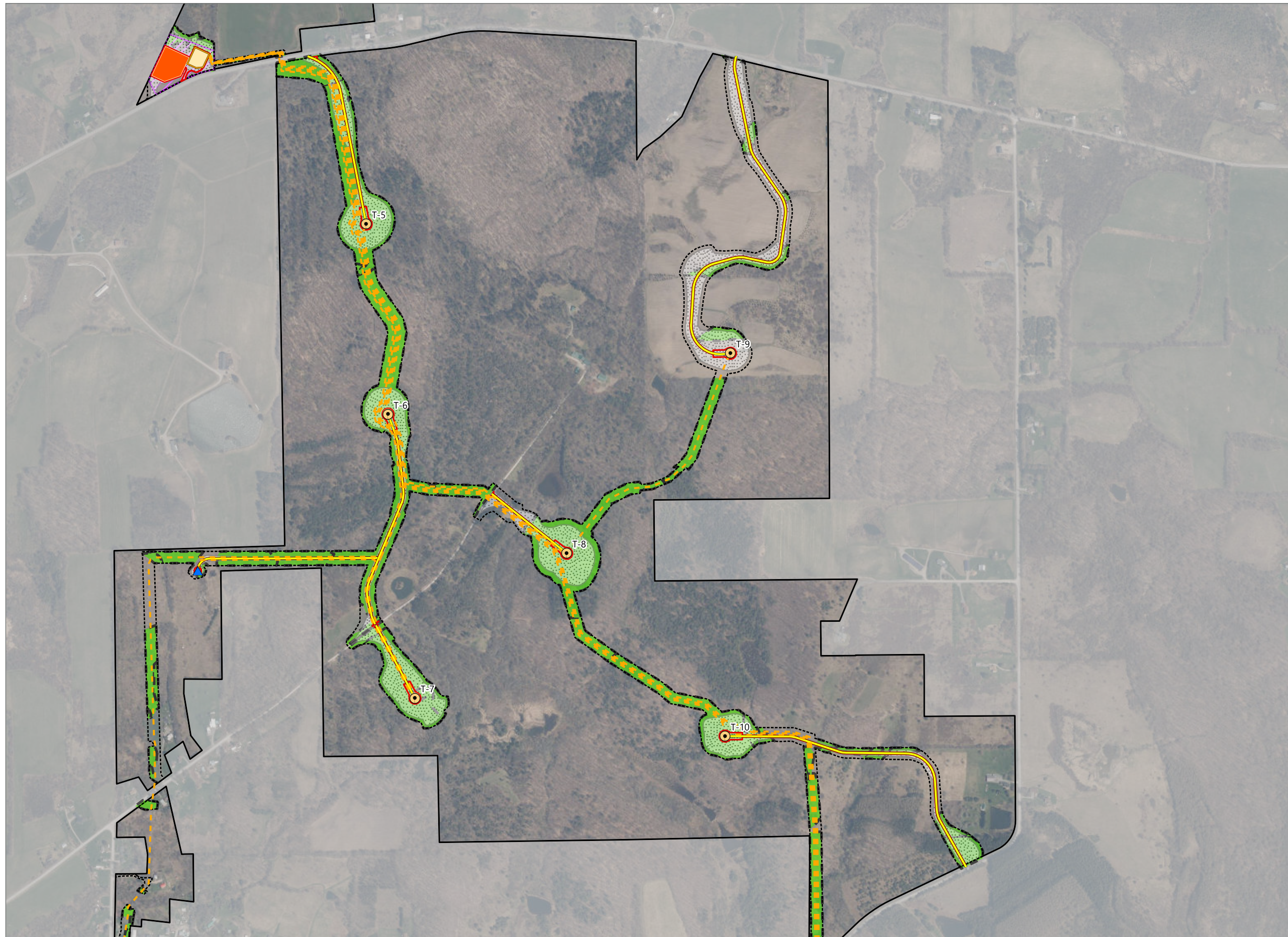
-  Wind Turbine
-  ADLS Tower
-  Access Road
-  Collection Line
-  Collection Substation
-  POI Substation
-  Laydown Area
-  O&M Building
-  Limit of Grading
-  Limit of Tree Clearing
-  Limit of Impervious Surface
-  Limit of Disturbance
-  Facility Site



Sheet 2 of 10



Prepared February 9, 2024  
Basemap: USDA NAIP "2022 New York 60cm" orthoimagery map service

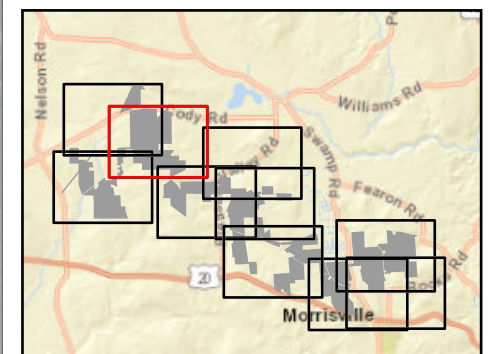


### Hoffman Falls Wind

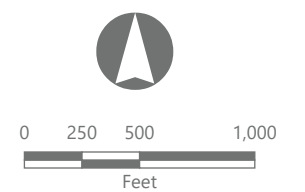
Towns of Eaton, Fenner, Nelson and  
Smithfield, Madison County,  
New York

**94-c Permit Application**  
**Matter No. 23-00038**

- Wind Turbine
- ADLS Tower
- Access Road
- Collection Line
- Collection Substation
- POI Substation
- Laydown Area
- O&M Building
- Limit of Grading
- Limit of Tree Clearing
- Limit of Impervious Surface
- Limit of Disturbance
- Facility Site



Sheet 3 of 10




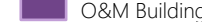







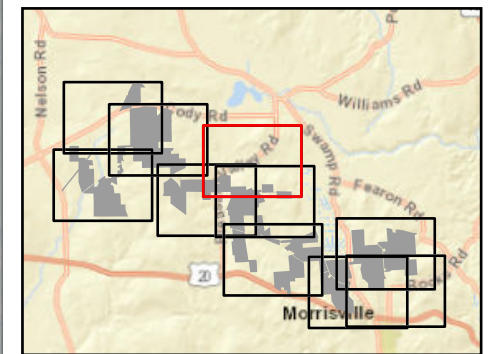
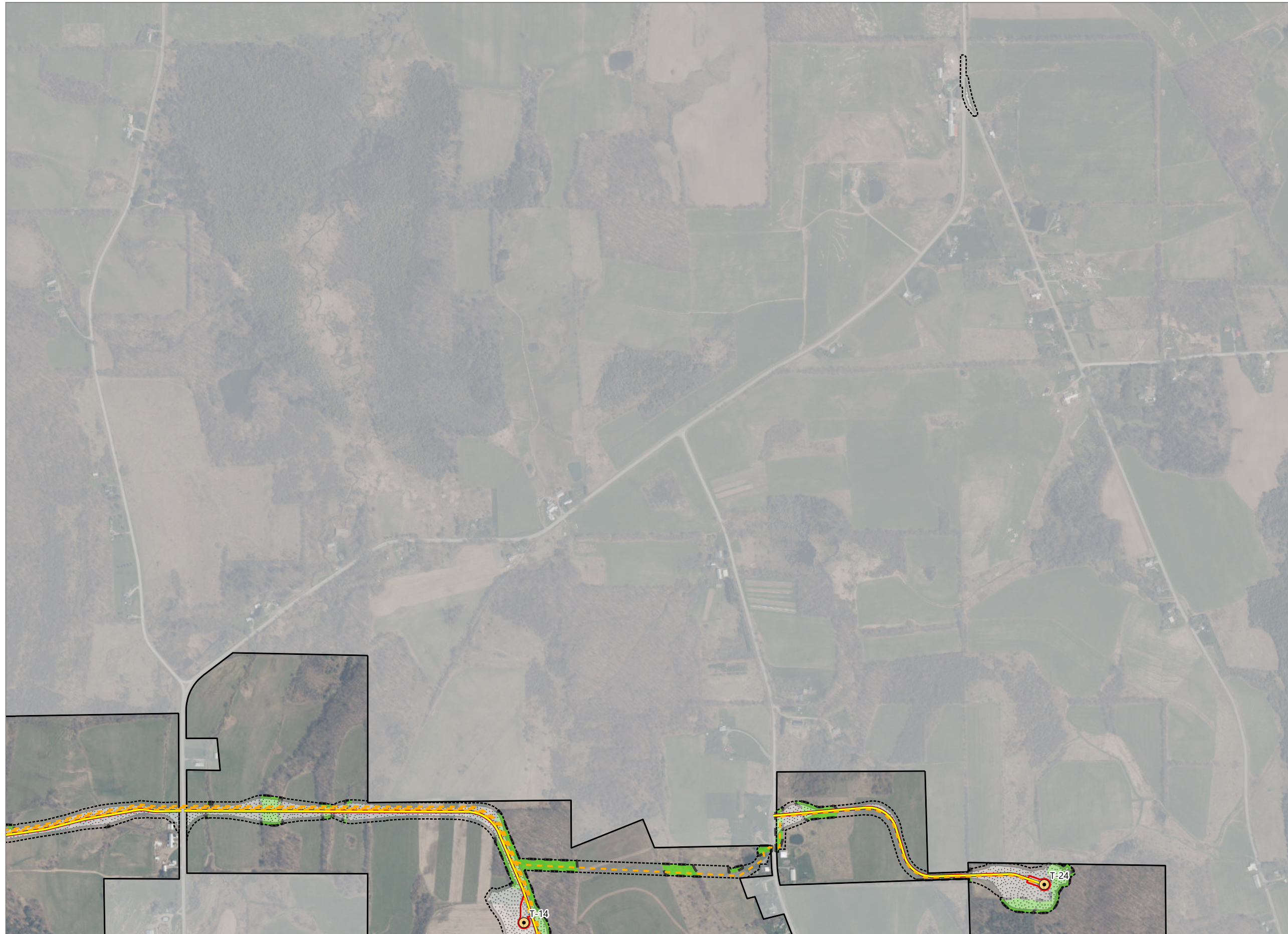
Prepared February 7, 2024  
Basemap: USDA NAIP "2022 New York 60cm" orthoimagery map service

### Hoffman Falls Wind

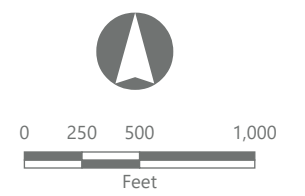
Towns of Eaton, Fenner, Nelson and  
Smithfield, Madison County,  
New York

**94-c Permit Application  
Matter No. 23-00038**

-  Wind Turbine
-  Access Road
-  Collection Line
-  O&M Building
-  Limit of Grading
-  Limit of Tree Clearing
-  Limit of Impervious Surface
-  Limit of Disturbance
-  Facility Site



Sheet 4 of 10













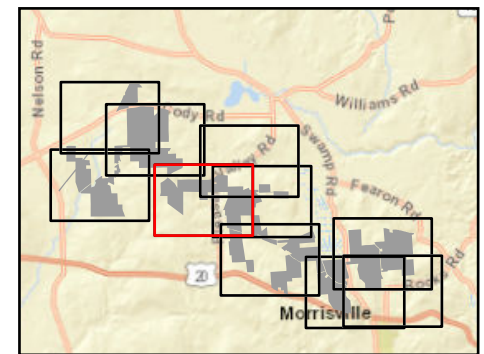
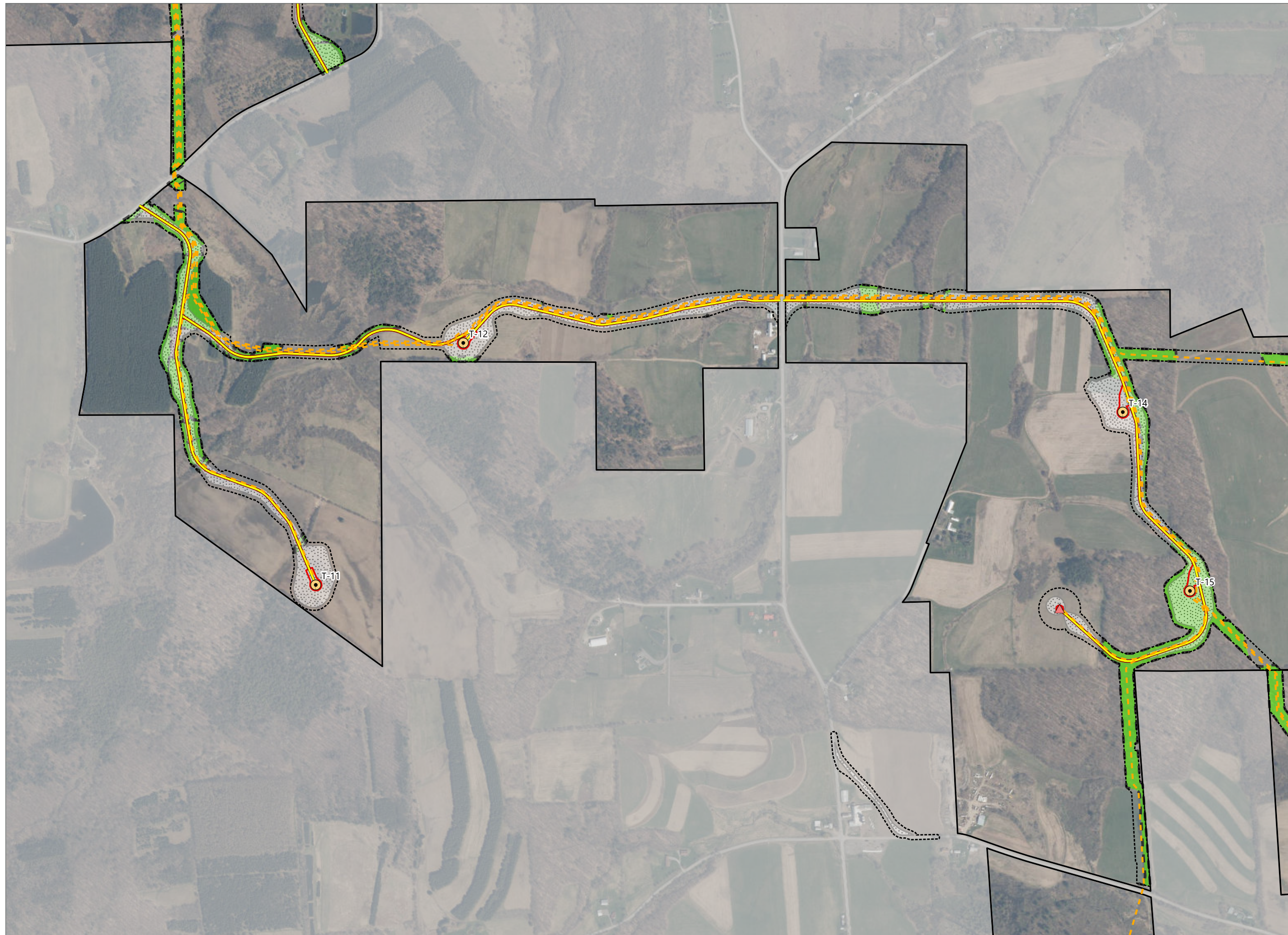
Prepared February 7, 2024  
Basemap: USDA NAIP "2022 New York 60cm" orthoimagery map  
service

### Hoffman Falls Wind

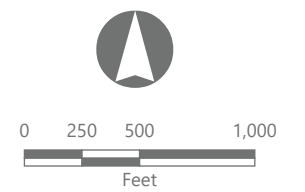
Towns of Eaton, Fenner, Nelson and  
Smithfield, Madison County,  
New York

**94-c Permit Application  
Matter No. 23-00038**

-  Wind Turbine
-  Permanent MET Tower
-  Access Road
-  Collection Line
-  O&M Building
-  Limit of Grading
-  Limit of Tree Clearing
-  Limit of Impervious Surface
-  Limit of Disturbance
-  Facility Site



Sheet 5 of 10













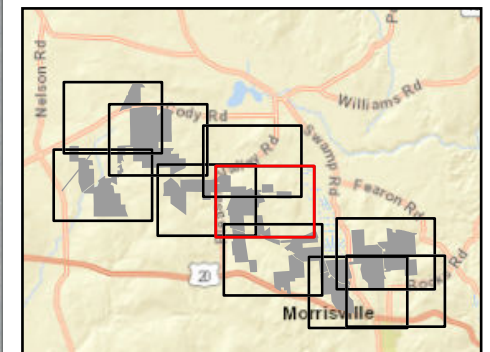
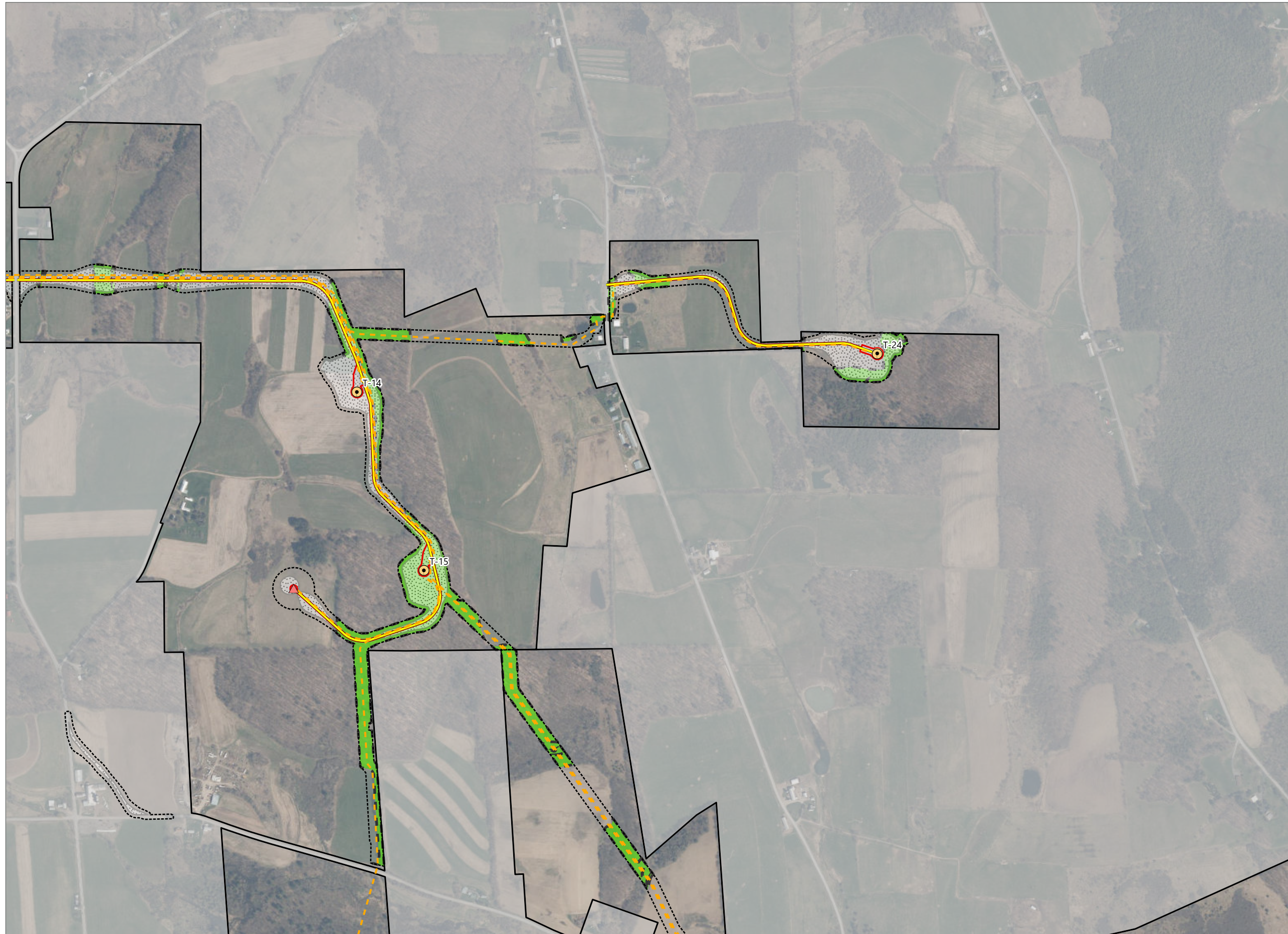
Prepared February 7, 2024  
Basemap: USDA NAIP "2022 New York 60cm" orthoimagery map service

### Hoffman Falls Wind

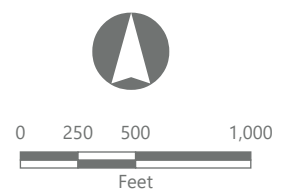
Towns of Eaton, Fenner, Nelson and  
Smithfield, Madison County,  
New York

**94-c Permit Application**  
**Matter No. 23-00038**

-  Wind Turbine
-  Permanent MET Tower
-  Access Road
-  Collection Line
-  O&M Building
-  Limit of Grading
-  Limit of Tree Clearing
-  Limit of Impervious Surface
-  Limit of Disturbance
-  Facility Site



Sheet 6 of 10



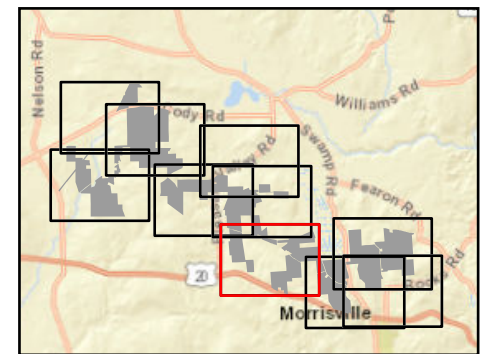
Prepared February 7, 2024  
Basemap: USDA NAIP "2022 New York 60cm" orthoimagery map service

### Hoffman Falls Wind

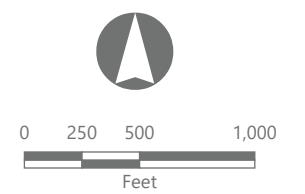
Towns of Eaton, Fenner, Nelson and Smithfield, Madison County, New York

**94-c Permit Application  
Matter No. 23-00038**

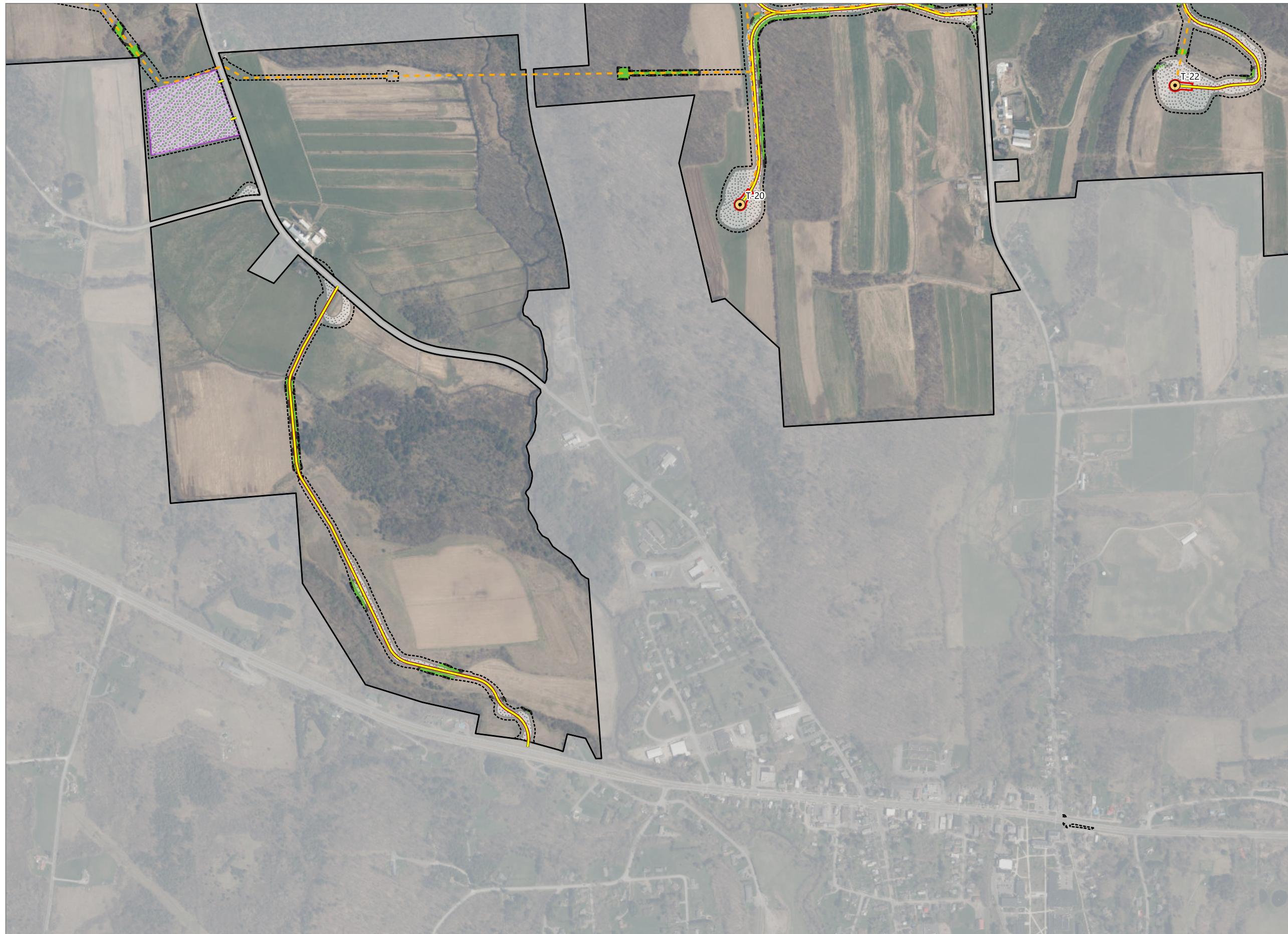
- Wind Turbine
- Access Road
- Collection Line
- Laydown Area
- O&M Building
- Limit of Grading
- Limit of Tree Clearing
- Limit of Impervious Surface
- Limit of Disturbance
- Facility Site



Sheet 7 of 10



Prepared February 7, 2024  
Basemap: USDA NAIP "2022 New York 60cm" orthoimagery map service

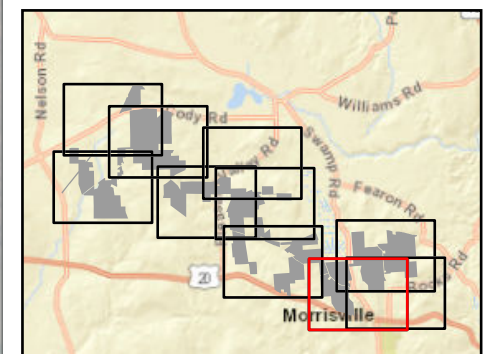


### Hoffman Falls Wind

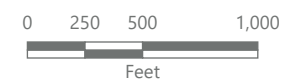
Towns of Eaton, Fenner, Nelson and Smithfield, Madison County, New York

**94-c Permit Application  
Matter No. 23-00038**

- Wind Turbine
- Access Road
- Collection Line
- Laydown Area
- O&M Building
- Limit of Grading
- Limit of Tree Clearing
- Limit of Impervious Surface
- Limit of Disturbance
- Facility Site



Sheet 8 of 10





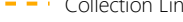
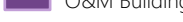



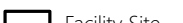

Prepared February 7, 2024  
Basemap: USDA NAIP "2022 New York 60cm" orthoimagery map service

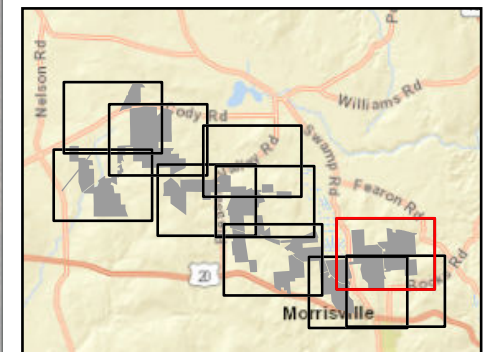
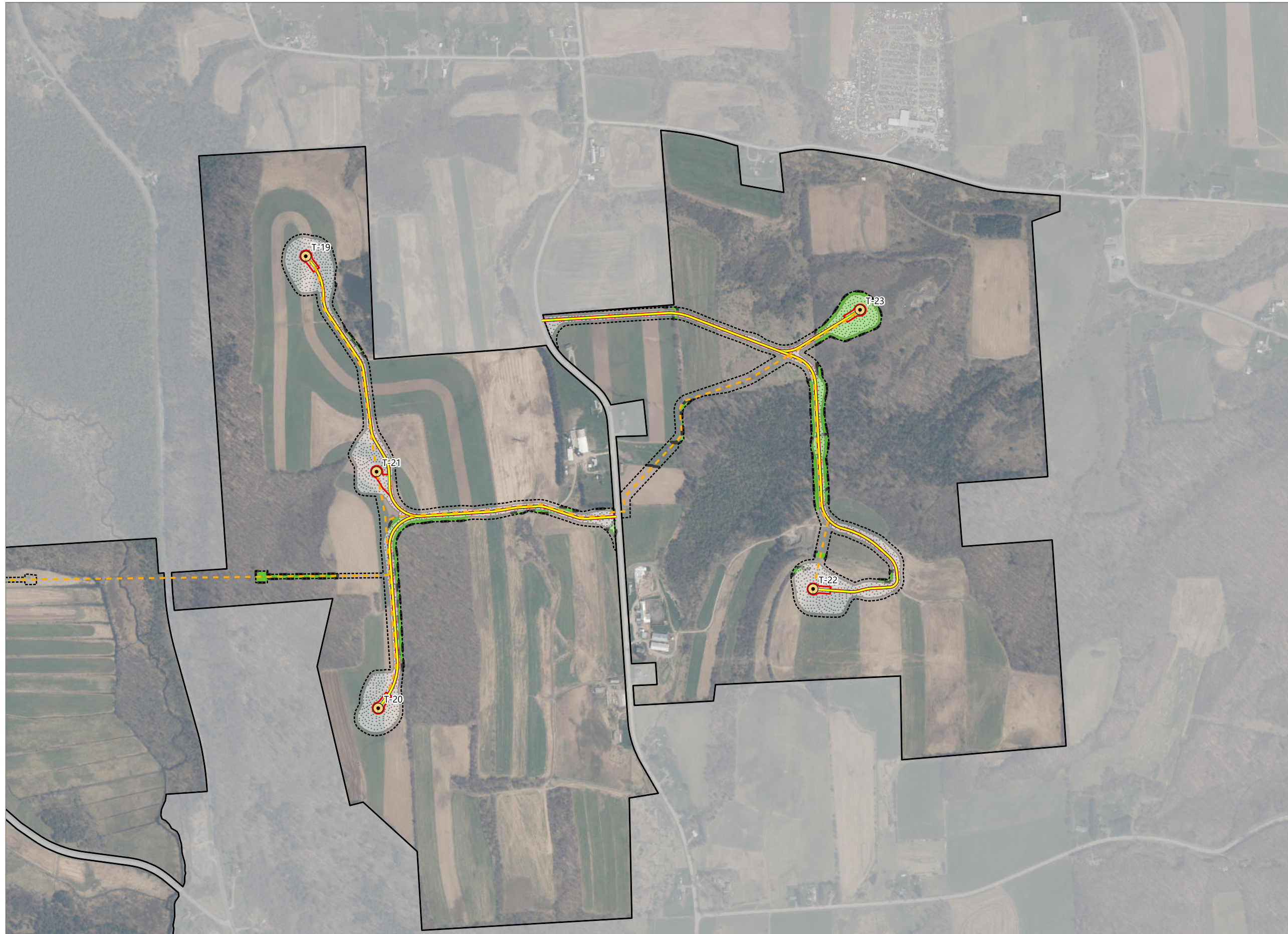


### Hoffman Falls Wind

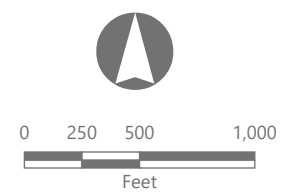
Towns of Eaton, Fenner, Nelson and  
Smithfield, Madison County,  
New York

**94-c Permit Application**  
**Matter No. 23-00038**

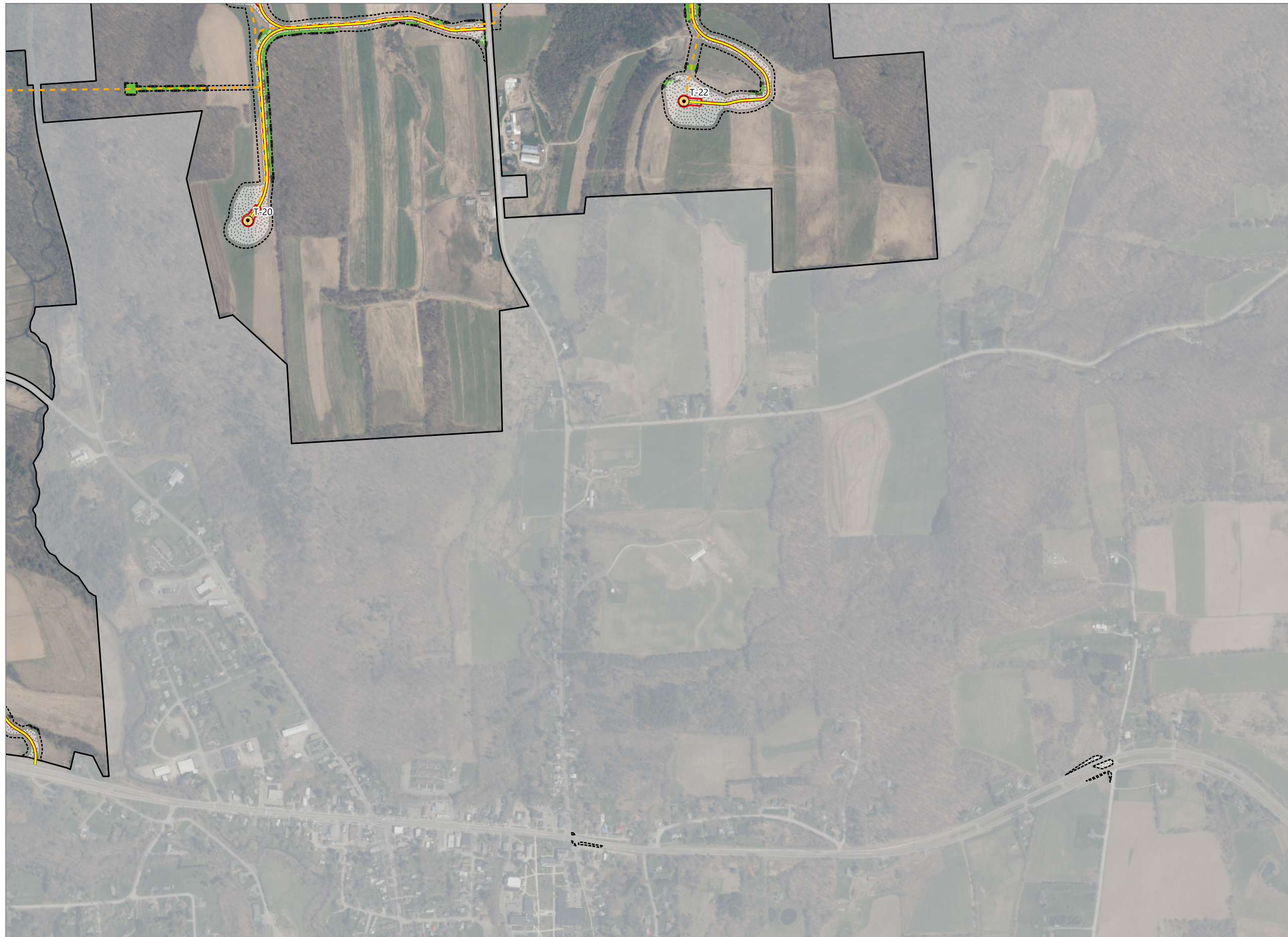
-  Wind Turbine
-  Access Road
-  Collection Line
-  O&M Building
-  Limit of Grading
-  Limit of Tree Clearing
-  Limit of Impervious Surface
-  Limit of Disturbance
-  Facility Site



Sheet 9 of 10







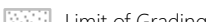
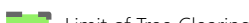


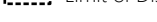
Prepared February 7, 2024  
Basemap: USDA NAIP "2022 New York 60cm" orthoimagery map service

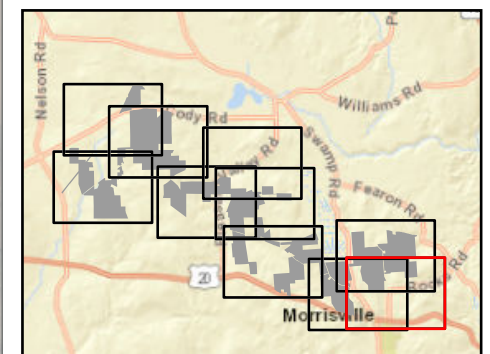


### Hoffman Falls Wind

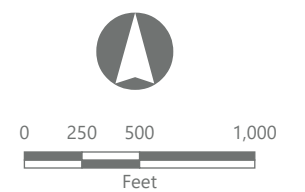
Towns of Eaton, Fenner, Nelson and  
Smithfield, Madison County,  
New York

**94-c Permit Application  
Matter No. 23-00038**

-  Wind Turbine
-  Access Road
-  Collection Line
-  O&M Building
-  Limit of Grading
-  Limit of Tree Clearing
-  Limit of Impervious Surface
-  Limit of Disturbance
-  Facility Site



Sheet 10 of 10



Prepared February 7, 2024  
Basemap: USDA NAIP "2022 New York 60cm" orthoimagery map  
service