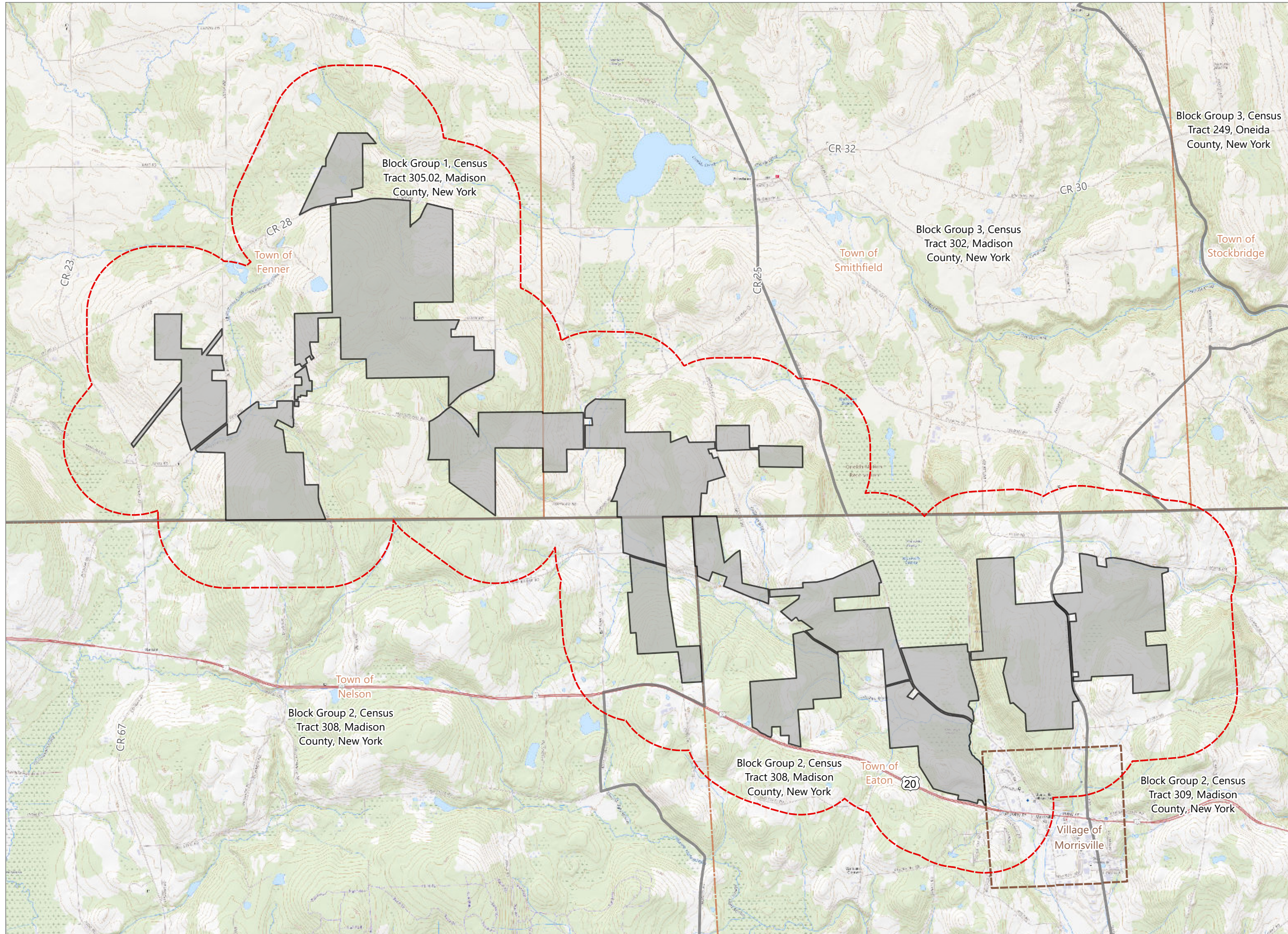


Figure 19-1. Potential Environmental Justice Areas

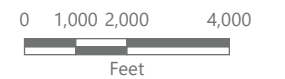


Hoffman Falls Wind

Towns of Eaton, Fenner, Nelson and Smithfield, Madison County, New York

**94-c Permit Application
Matter No. 23-00038**

- Census Block Group
- Facility Site
- ⬭ EJ Study Area (0.5 mile radius)
- ⬭ Village Boundary
- ⬭ Town Boundary



Prepared February 5, 2024
Basemap: Esri "USGS Topo" map service