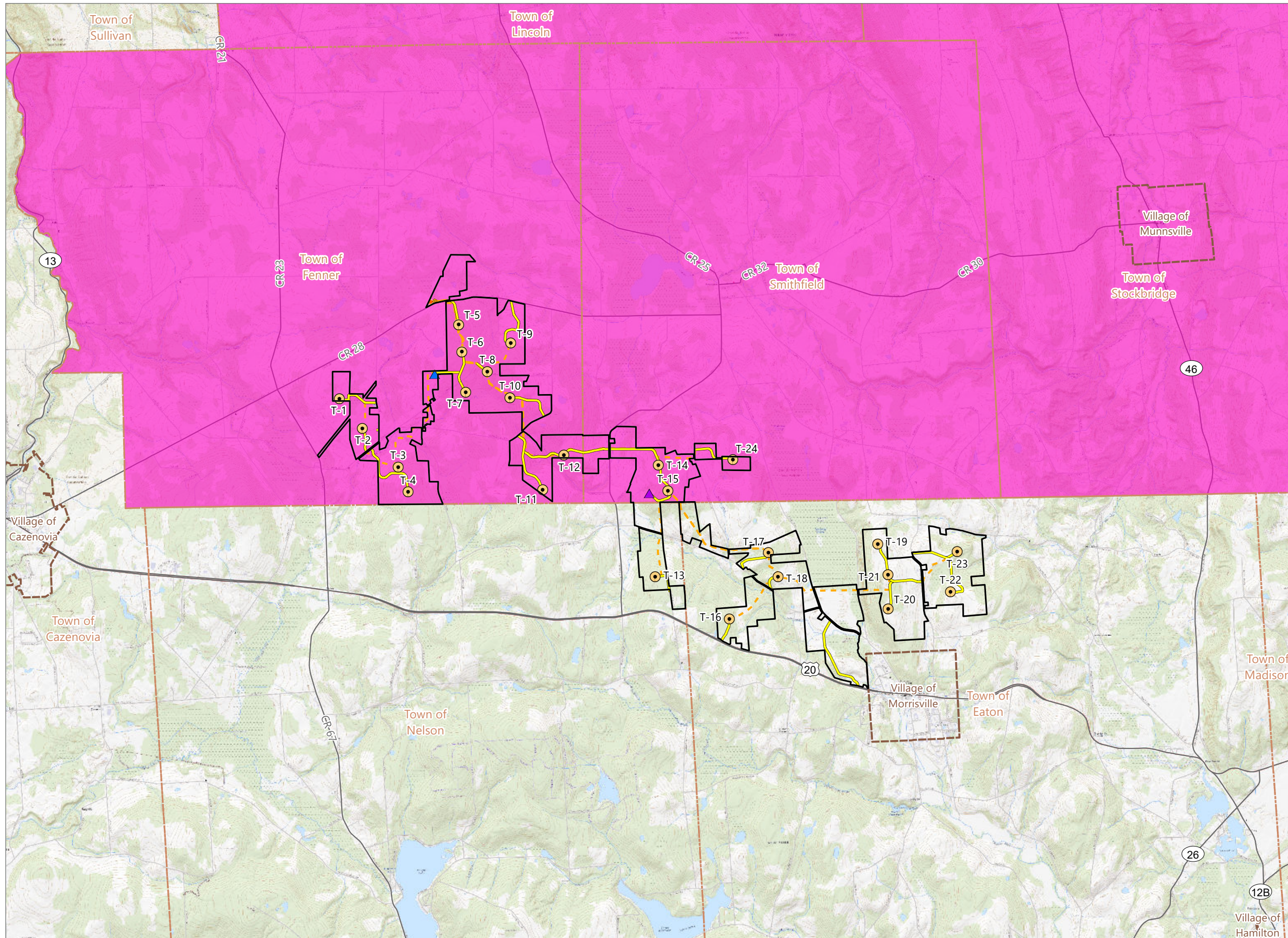


**Figure 17-1. Disadvantaged Communities**

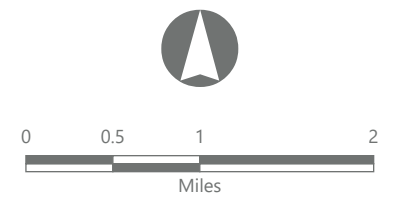


**Hoffman Falls Wind**

Towns of Eaton, Fenner, Nelson and Smithfield, Madison County, New York

**94-c Permit Application  
Matter No. 23-00038**

- Area Designated As Disadvantaged Community
- Facility Components**
- Wind Turbine
- ADLS Tower
- Permanent MET Tower
- Access Road
- Collection Line
- Collection Substation
- POI Substation
- O&M Building
- Facility Site



Prepared February 5, 2024  
Basemap: Esri "USGS Topo" map service  
Source: NYSERDA 2023 CJWG Draft Disadvantaged Communities