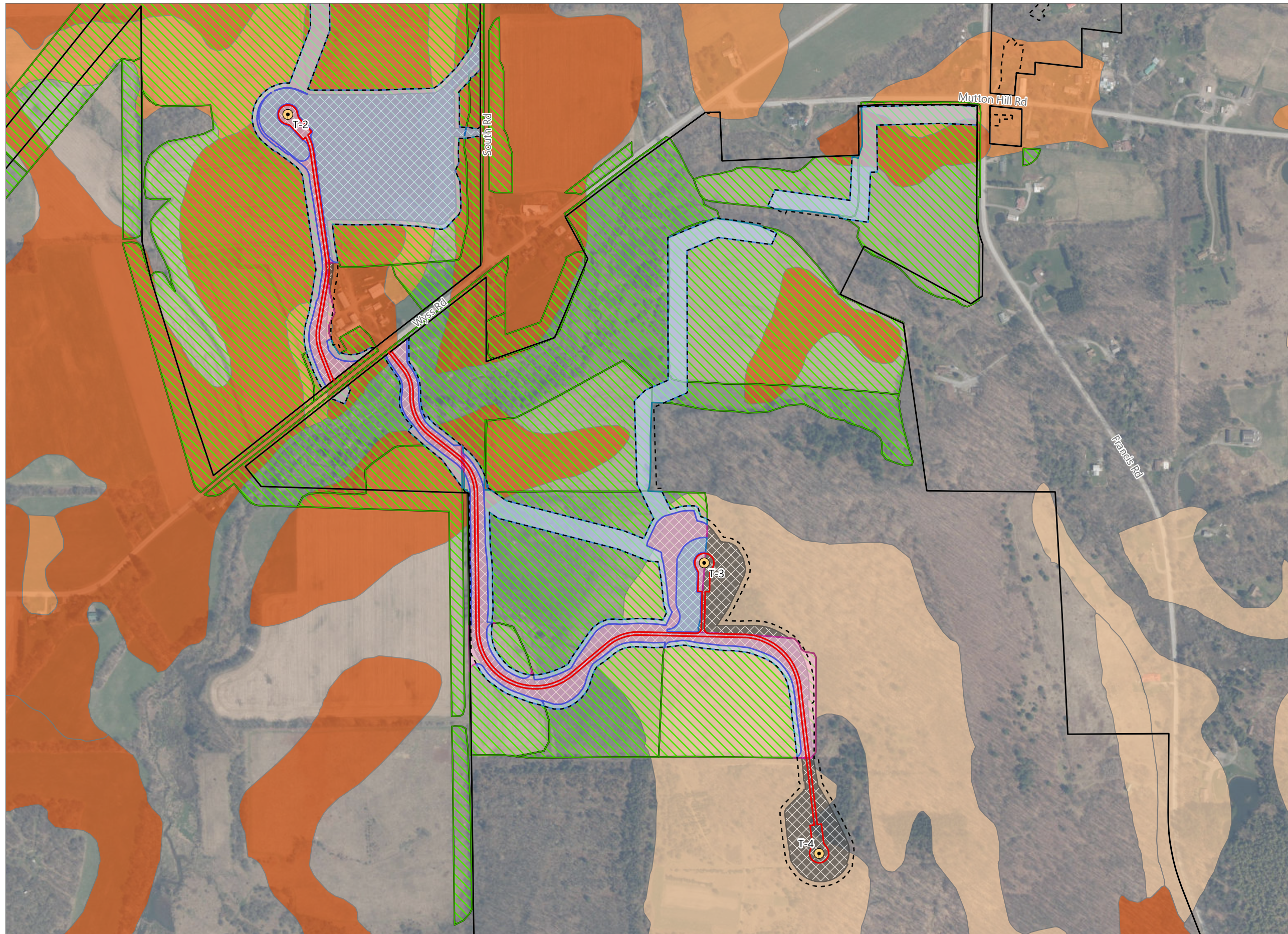


Figure 15-7. Impacts to Active Agricultural Land



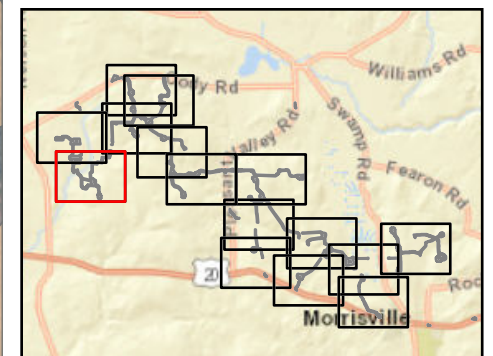
Hoffman Falls Wind

Towns of Eaton, Fenner, Nelson and Smithfield, Madison County, New York

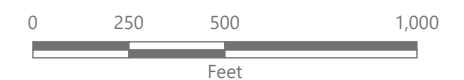
**94-c Permit Application
Matter No. 23-00038**

- Active Agricultural Land
- Temporary Impacts During Operation*
- Temporary Impacts During Construction**
- Mineral Soil Group
 - Group 2
 - Group 3
 - Group 4
- Facility Components
 - Wind Turbine
 - Limit of Grading
 - Limit of Impervious Surface
 - Limit of Disturbance
 - Facility Site

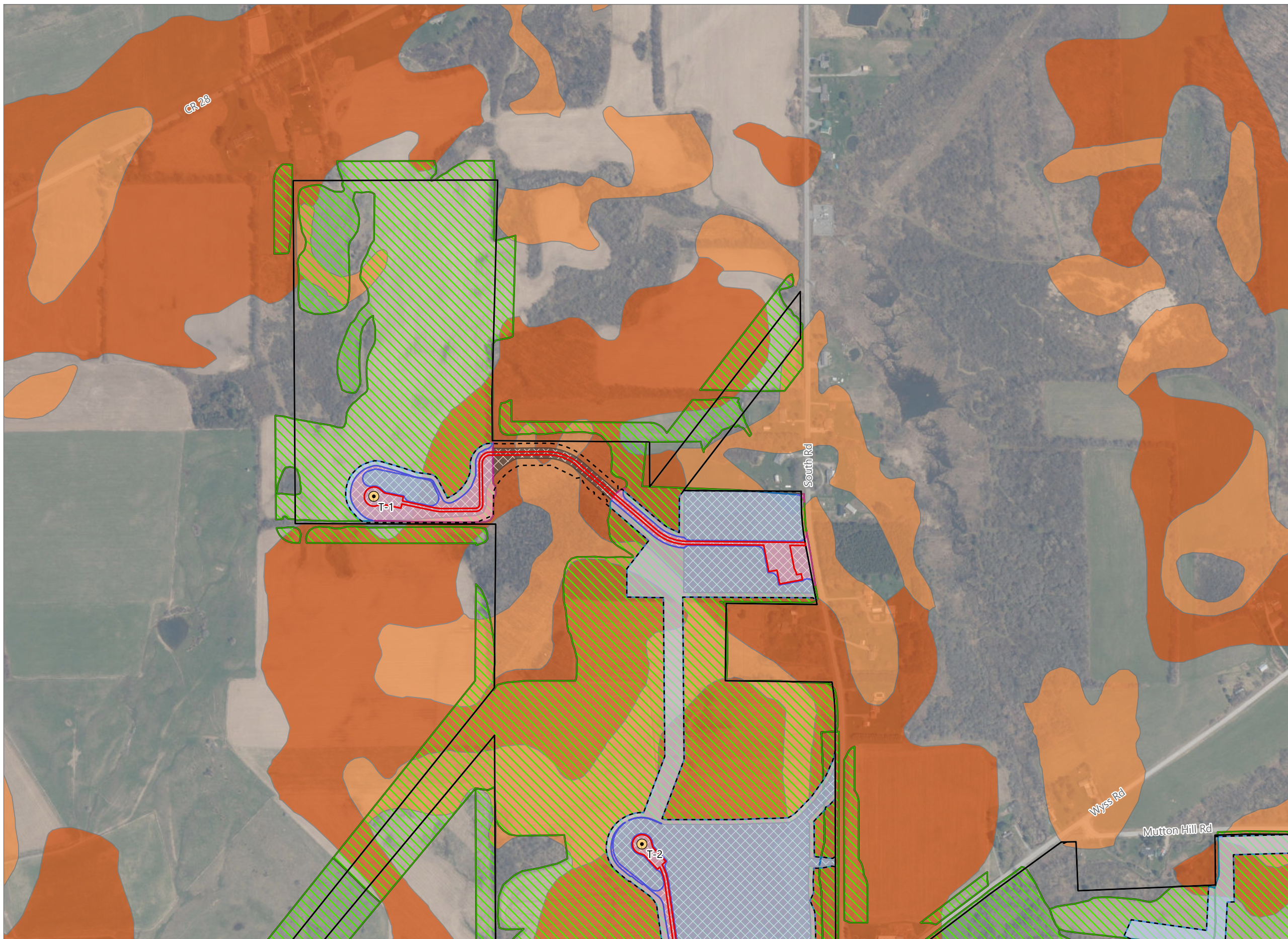
Note:
*Areas impacted by the Facility that will be temporarily taken out of agricultural production during construction and operations.
**Areas impacted by the Facility that will be temporarily taken out of agricultural production until the end of the construction period, at which point they will be restored and returned to agricultural use.



Sheet 1 of 15



Prepared February 7, 2024
Basemap: USDA NAIP "2022 New York 60cm" orthoimagery map service



Hoffman Falls Wind

Towns of Eaton, Fenner, Nelson and Smithfield, Madison County, New York

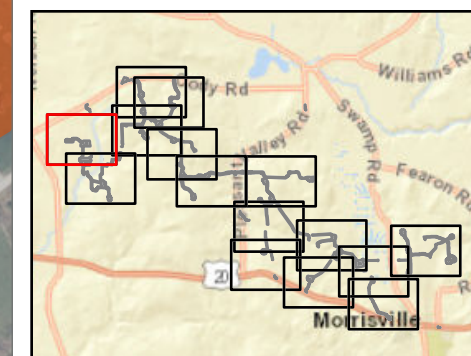
**94-c Permit Application
Matter No. 23-00038**

- Active Agricultural Land
- Temporary Impacts During Operation*
- Temporary Impacts During Construction**
- Mineral Soil Group
 - Group 2
 - Group 3
- Facility Components
 - Wind Turbine
 - Limit of Grading
 - Limit of Impervious Surface
 - Limit of Disturbance
 - Facility Site

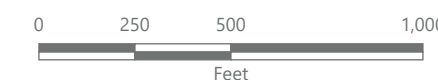
Note:

*Areas impacted by the Facility that will be temporarily taken out of agricultural production during construction and operations.

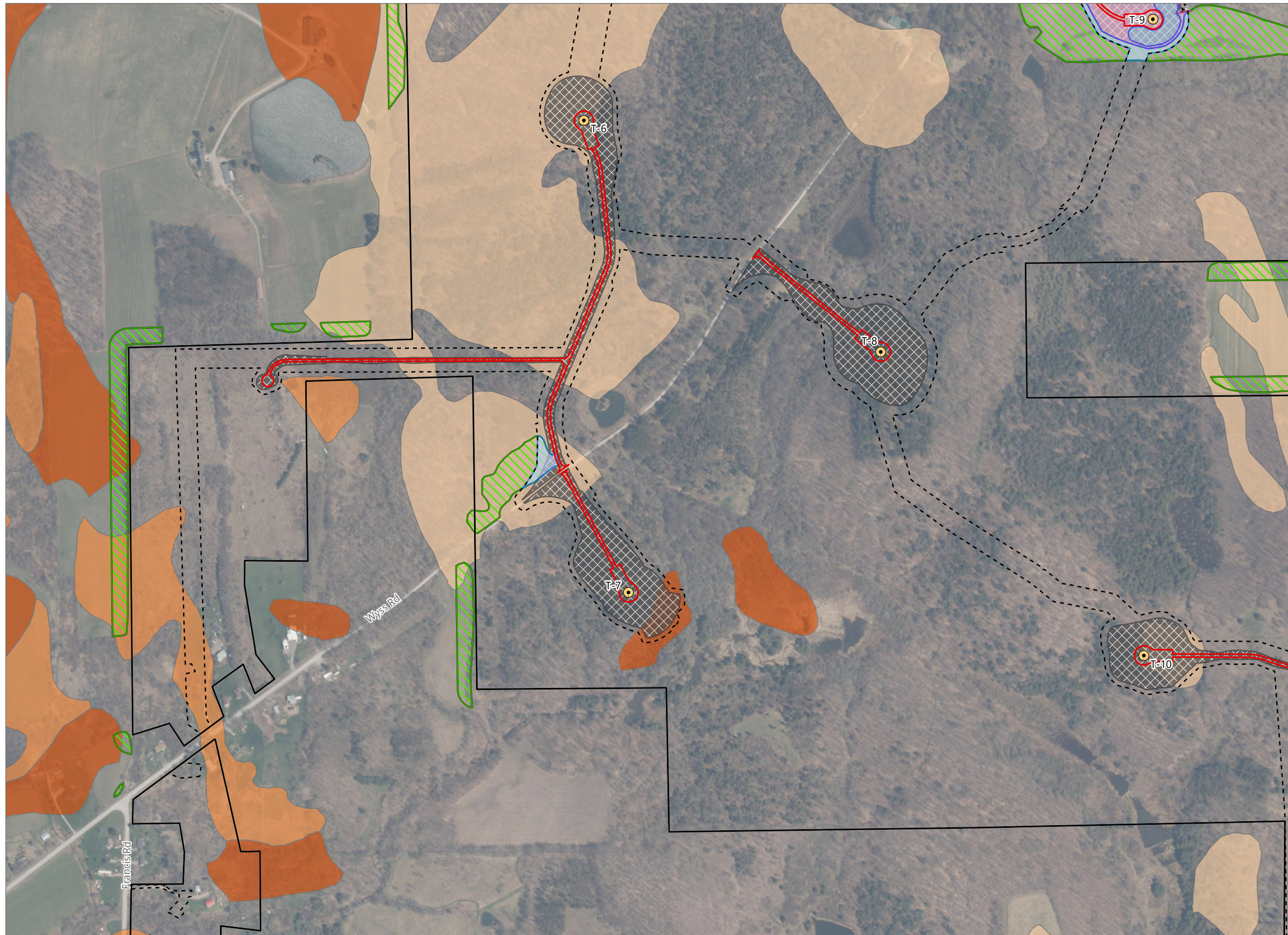
**Areas impacted by the Facility that will be temporarily taken out of agricultural production until the end of the construction period, at which point they will be restored and returned to agricultural use.



Sheet 2 of 15



Prepared February 7, 2024
 Basemap: USDA NAIP "2022 New York 60cm" orthoimagery map service



Hoffman Falls Wind

Towns of Eaton, Fenner, Nelson and Smithfield, Madison County, New York

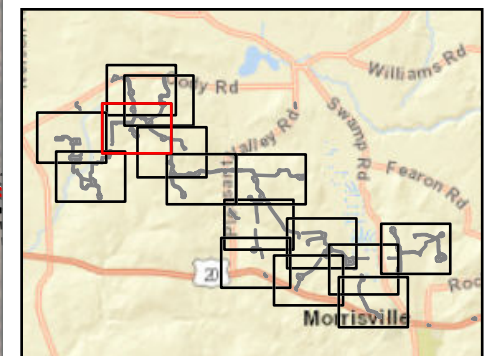
**94-c Permit Application
Matter No. 23-00038**

- Active Agricultural Land
- Temporary Impacts During Operation*
- Temporary Impacts During Construction**
- Mineral Soil Group
 - Group 2
 - Group 3
 - Group 4
- Facility Components
 - Wind Turbine
 - Limit of Grading
 - Limit of Impervious Surface
 - Limit of Disturbance
 - Facility Site

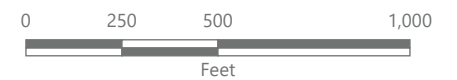
Note:

*Areas impacted by the Facility that will be temporarily taken out of agricultural production during construction and operations.

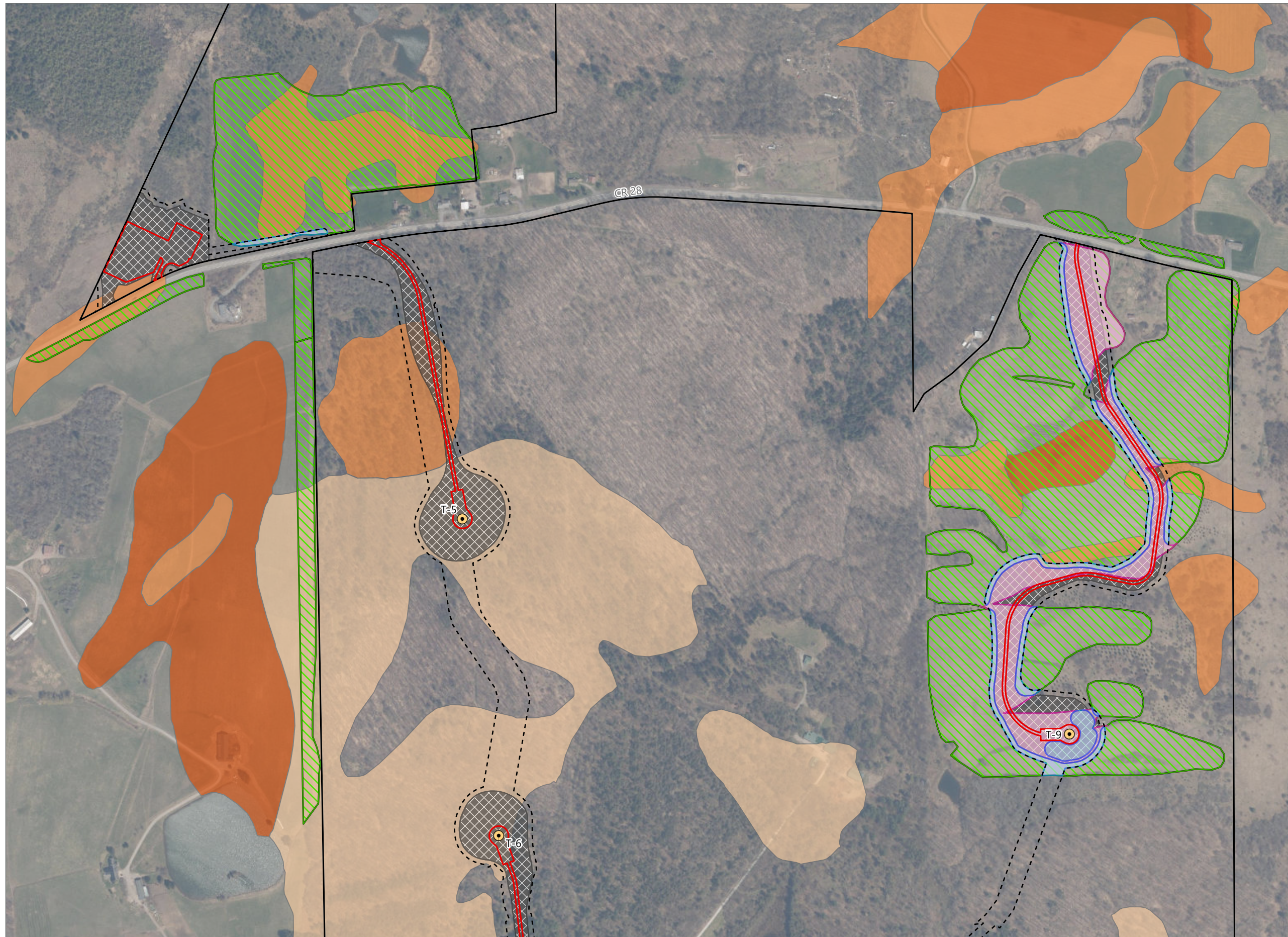
**Areas impacted by the Facility that will be temporarily taken out of agricultural production until the end of the construction period, at which point they will be restored and returned to agricultural use.



Sheet 3 of 15



Prepared February 7, 2024
Basemap: USDA NAIP "2022 New York 60cm" orthoimagery map service



Hoffman Falls Wind

Towns of Eaton, Fenner, Nelson and Smithfield, Madison County, New York

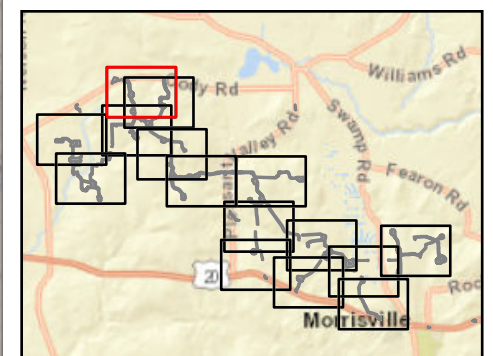
**94-c Permit Application
Matter No. 23-00038**

- Active Agricultural Land
- Temporary Impacts During Operation*
- Temporary Impacts During Construction**
- Mineral Soil Group
 - Group 2
 - Group 3
 - Group 4
- Facility Components
 - Wind Turbine
 - Limit of Grading
 - Limit of Impervious Surface
 - Limit of Disturbance
 - Facility Site

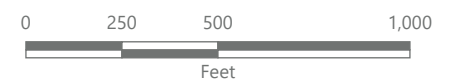
Note:

*Areas impacted by the Facility that will be temporarily taken out of agricultural production during construction and operations.

**Areas impacted by the Facility that will be temporarily taken out of agricultural production until the end of the construction period, at which point they will be restored and returned to agricultural use.

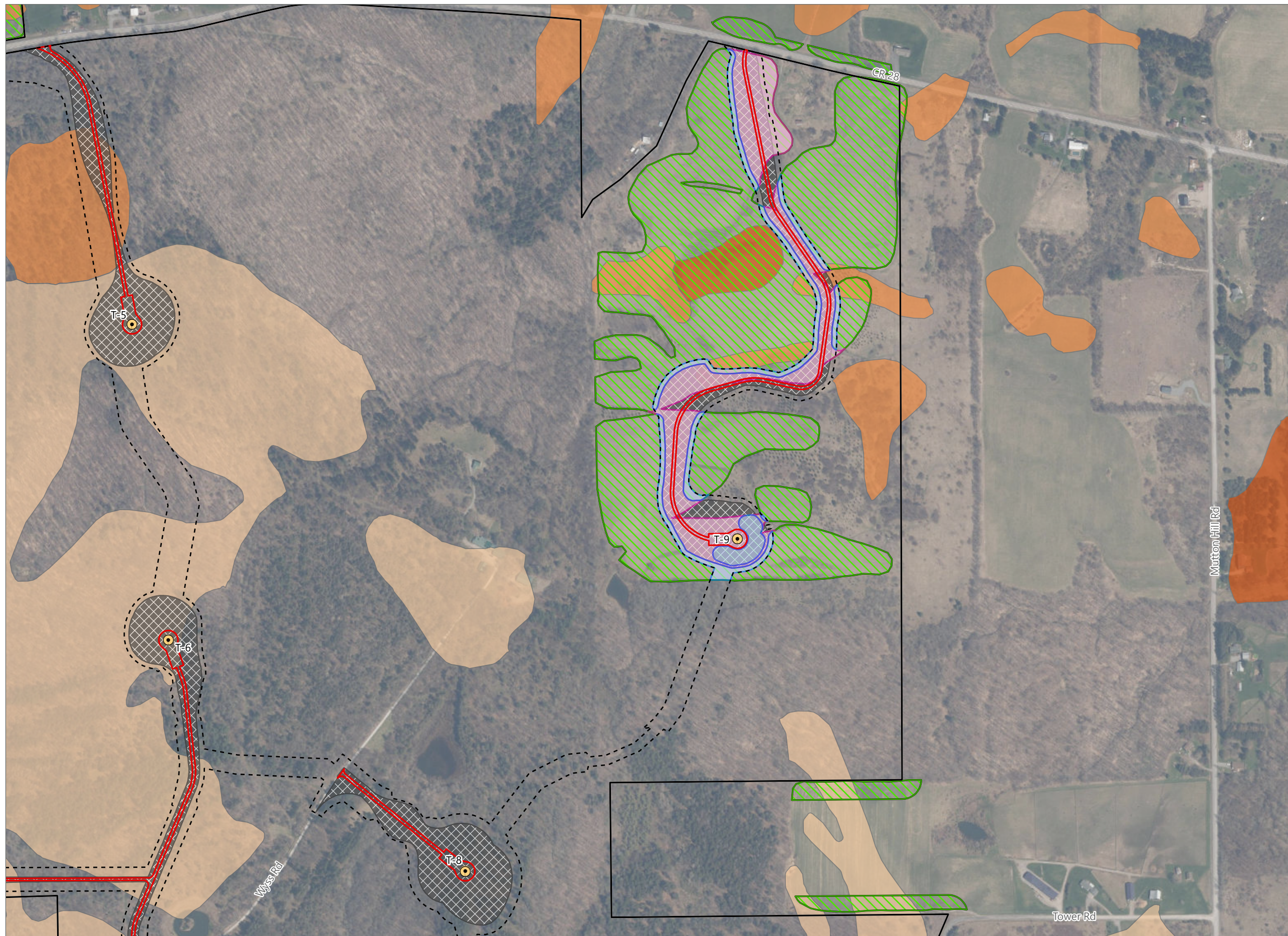


Sheet 4 of 15



Prepared February 7, 2024

Basemap: USDA NAIP "2022 New York 60cm" orthoimagery map service



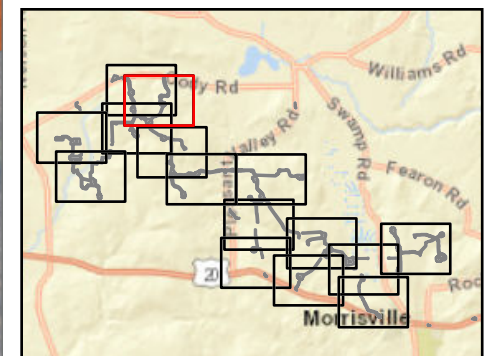
Hoffman Falls Wind

Towns of Eaton, Fenner, Nelson and Smithfield, Madison County, New York

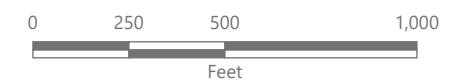
**94-c Permit Application
Matter No. 23-00038**

- Active Agricultural Land
- Temporary Impacts During Operation*
- Temporary Impacts During Construction**
- Mineral Soil Group
 - Group 2
 - Group 3
 - Group 4
- Facility Components
 - Wind Turbine
 - Limit of Grading
 - Limit of Impervious Surface
 - Limit of Disturbance
 - Facility Site

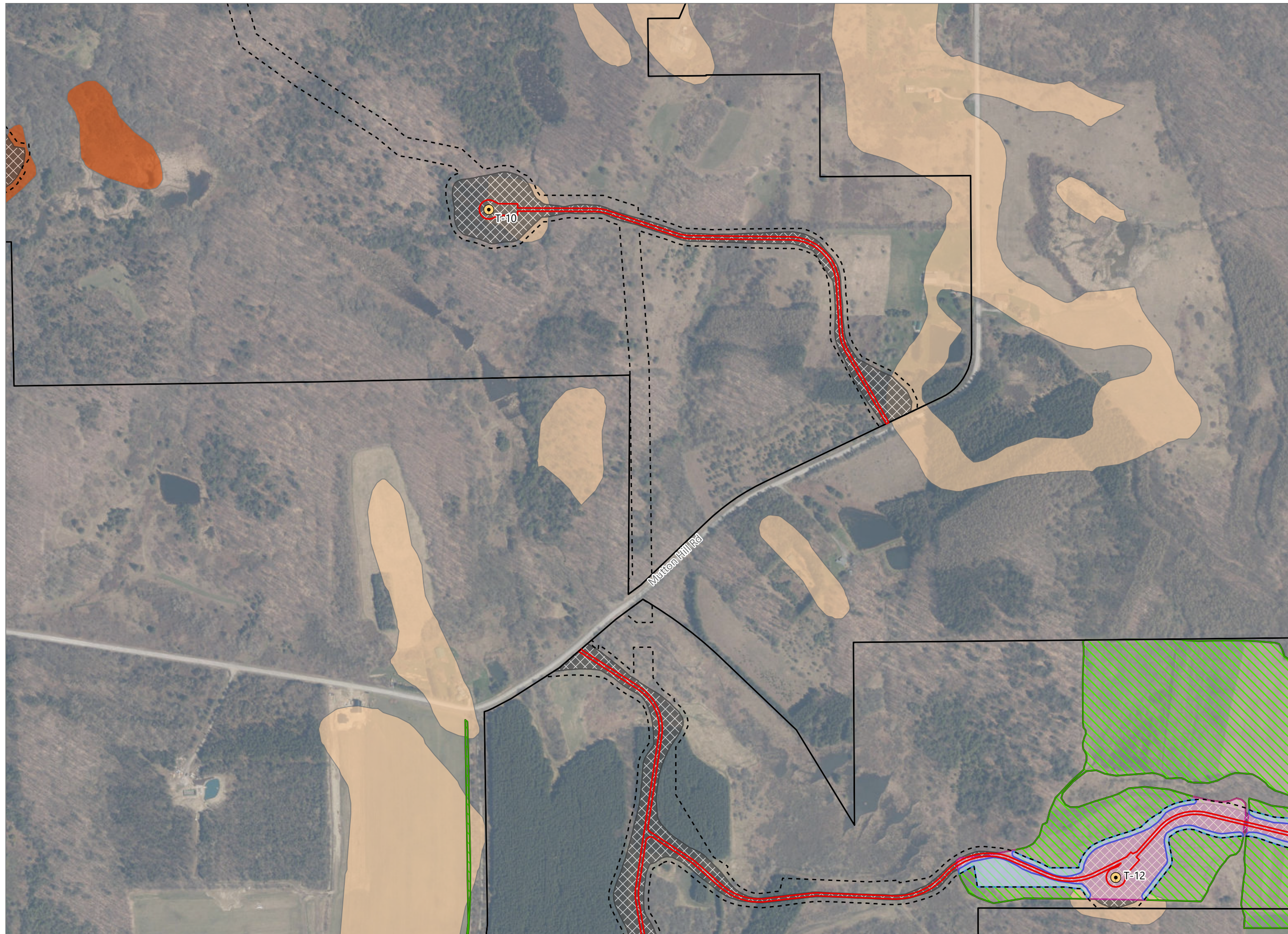
Note:
 *Areas impacted by the Facility that will be temporarily taken out of agricultural production during construction and operations.
 **Areas impacted by the Facility that will be temporarily taken out of agricultural production until the end of the construction period, at which point they will be restored and returned to agricultural use.



Sheet 5 of 15



Prepared February 7, 2024
 Basemap: USDA NAIP "2022 New York 60cm" orthoimagery map service



Hoffman Falls Wind

Towns of Eaton, Fenner, Nelson and Smithfield, Madison County, New York

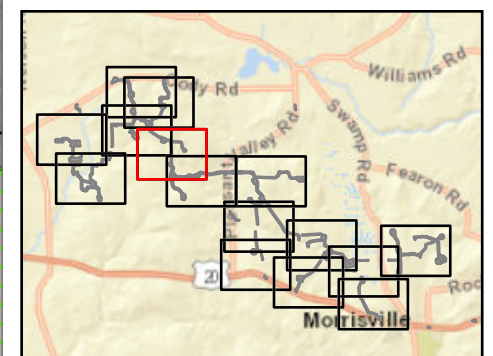
**94-c Permit Application
Matter No. 23-00038**

- Active Agricultural Land
- Temporary Impacts During Operation*
- Temporary Impacts During Construction**
- Mineral Soil Group
 - Group 2
 - Group 4
- Facility Components
 - Wind Turbine
 - Limit of Grading
 - Limit of Impervious Surface
 - Limit of Disturbance
 - Facility Site

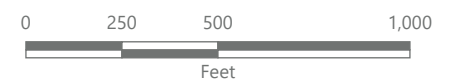
Note:

*Areas impacted by the Facility that will be temporarily taken out of agricultural production during construction and operations.

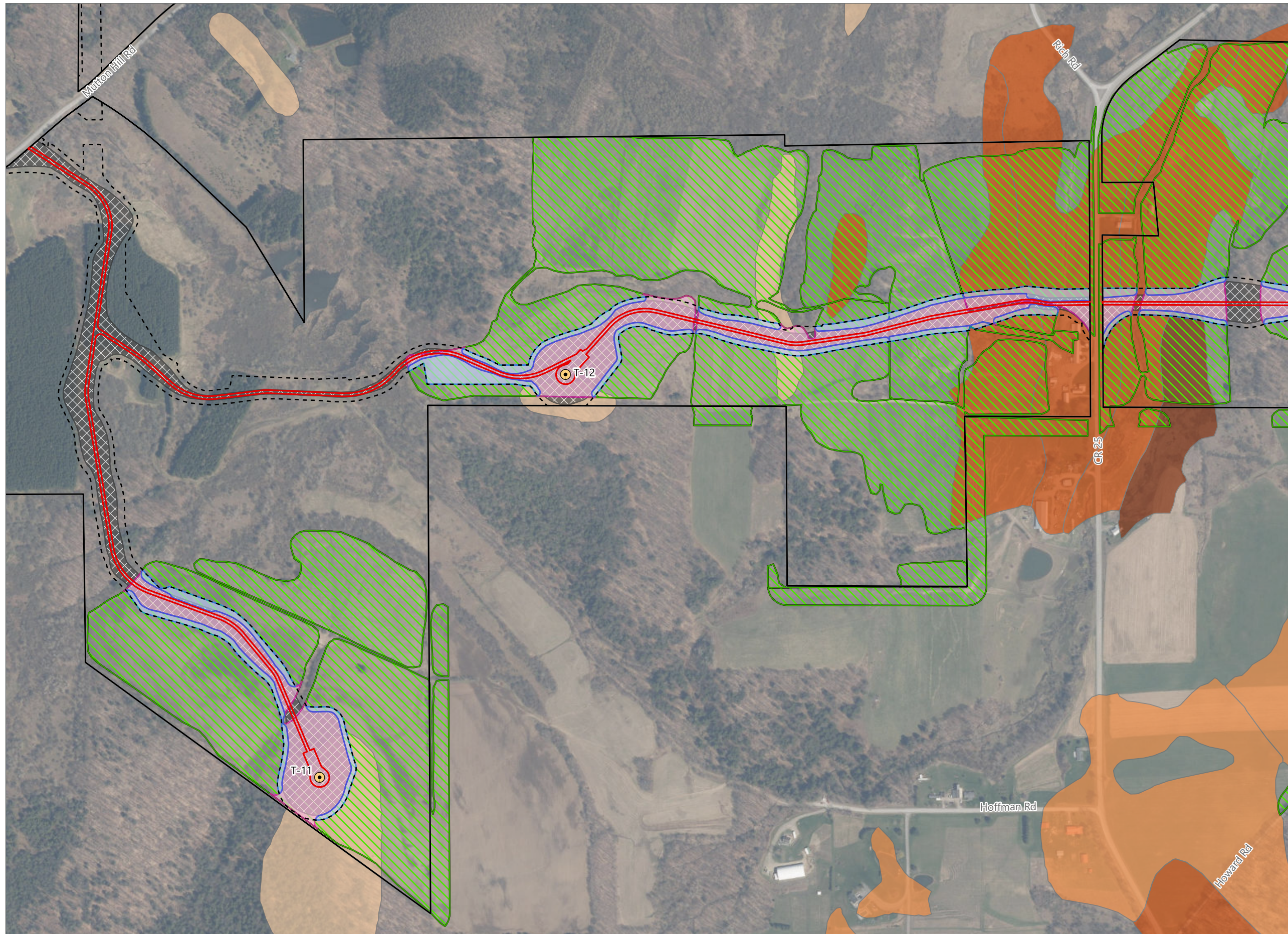
**Areas impacted by the Facility that will be temporarily taken out of agricultural production until the end of the construction period, at which point they will be restored and returned to agricultural use.



Sheet 6 of 15



Prepared February 7, 2024
Basemap: USDA NAIP "2022 New York 60cm" orthoimagery map service



Hoffman Falls Wind

Towns of Eaton, Fenner, Nelson and Smithfield, Madison County, New York

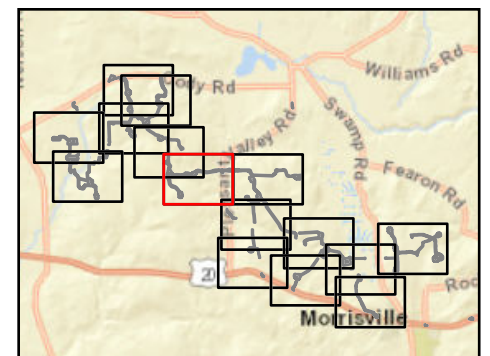
**94-c Permit Application
Matter No. 23-00038**

- Active Agricultural Land
 - Temporary Impacts During Operation*
 - Temporary Impacts During Construction**
- Mineral Soil Group
- Group 1
 - Group 2
 - Group 3
 - Group 4
- Facility Components
- Wind Turbine
 - Limit of Grading
 - Limit of Impervious Surface
 - Limit of Disturbance
 - Facility Site

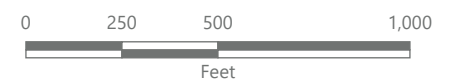
Note:

*Areas impacted by the Facility that will be temporarily taken out of agricultural production during construction and operations.

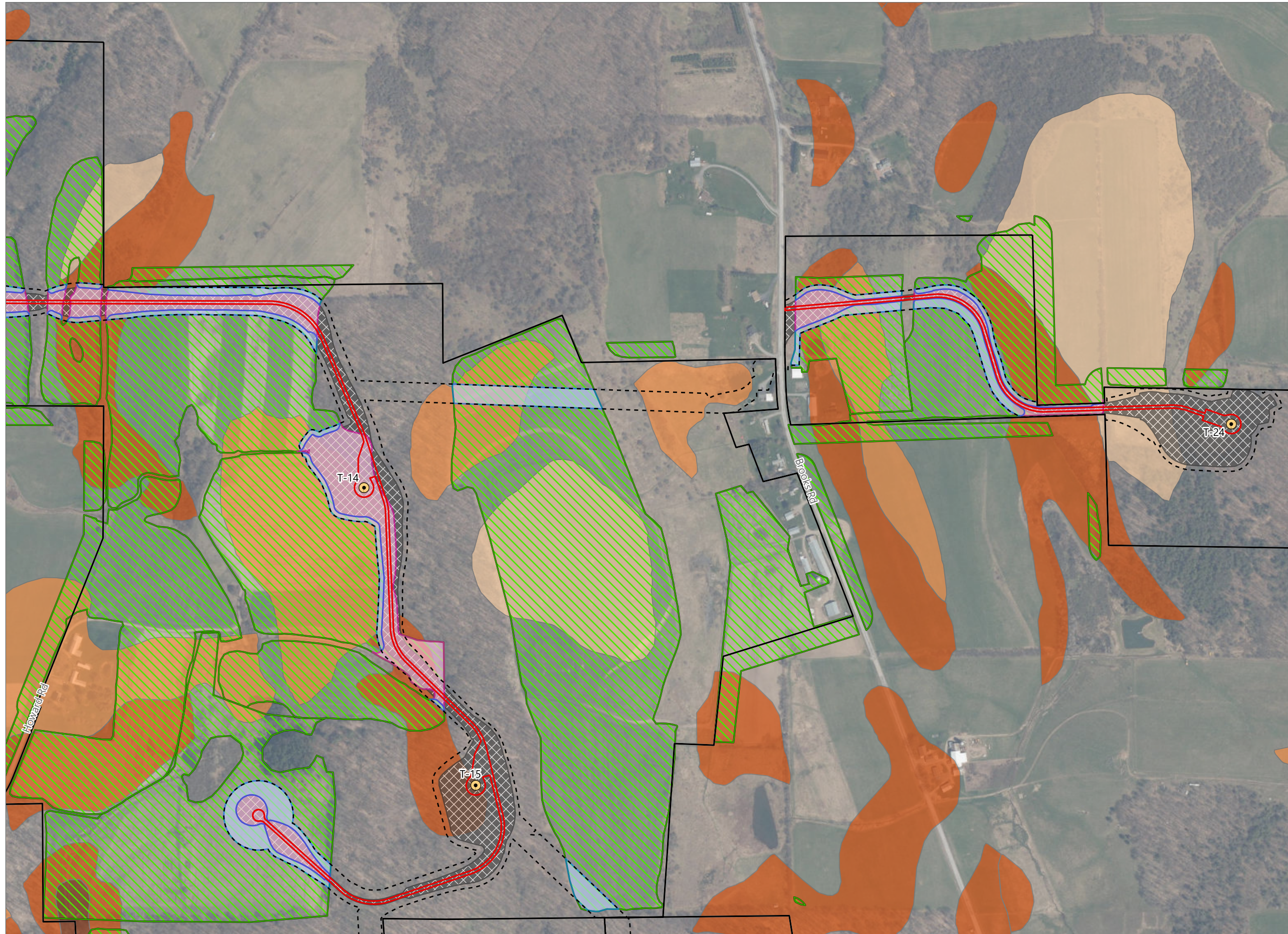
**Areas impacted by the Facility that will be temporarily taken out of agricultural production until the end of the construction period, at which point they will be restored and returned to agricultural use.



Sheet 7 of 15



Prepared February 7, 2024
Basemap: USDA NAIP "2022 New York 60cm" orthoimagery map service



Hoffman Falls Wind

Towns of Eaton, Fenner, Nelson and Smithfield, Madison County, New York

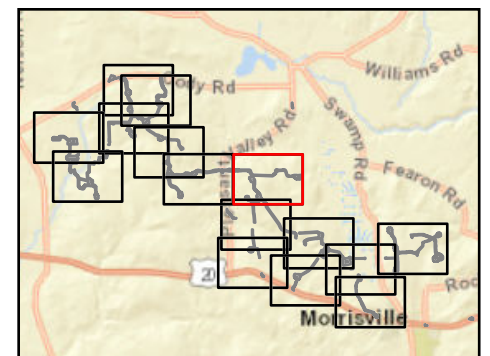
**94-c Permit Application
Matter No. 23-00038**

- Active Agricultural Land
 - Temporary Impacts During Operation*
 - Temporary Impacts During Construction**
- Mineral Soil Group
- Group 1
 - Group 2
 - Group 3
 - Group 4
- Facility Components
- Wind Turbine
 - Limit of Grading
 - Limit of Impervious Surface
 - Limit of Disturbance
 - Facility Site

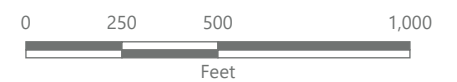
Note:

*Areas impacted by the Facility that will be temporarily taken out of agricultural production during construction and operations.

**Areas impacted by the Facility that will be temporarily taken out of agricultural production until the end of the construction period, at which point they will be restored and returned to agricultural use.



Sheet 8 of 15





Hoffman Falls Wind

Towns of Eaton, Fenner, Nelson and Smithfield, Madison County, New York

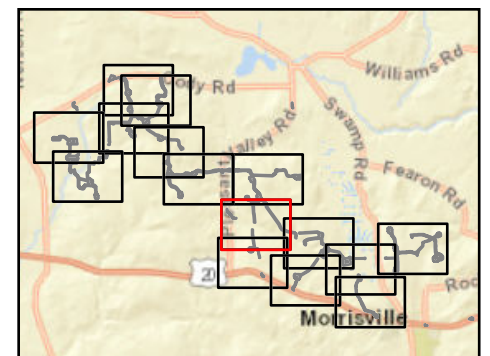
**94-c Permit Application
Matter No. 23-00038**

- Active Agricultural Land
- Temporary Impacts During Operation*
- Temporary Impacts During Construction**
- Mineral Soil Group
 - Group 1
 - Group 2
 - Group 3
 - Group 4
- Facility Components
 - Wind Turbine
 - Limit of Grading
 - Limit of Impervious Surface
 - Limit of Disturbance
 - Facility Site

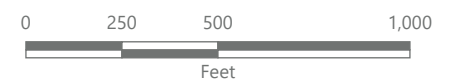
Note:

*Areas impacted by the Facility that will be temporarily taken out of agricultural production during construction and operations.

**Areas impacted by the Facility that will be temporarily taken out of agricultural production until the end of the construction period, at which point they will be restored and returned to agricultural use.



Sheet 9 of 15



Prepared February 7, 2024
Basemap: USDA NAIP "2022 New York 60cm" orthoimagery map service



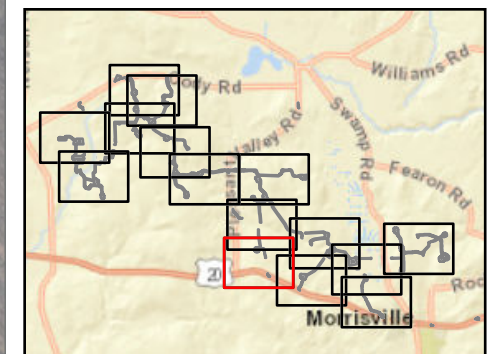
Hoffman Falls Wind

Towns of Eaton, Fenner, Nelson and Smithfield, Madison County, New York

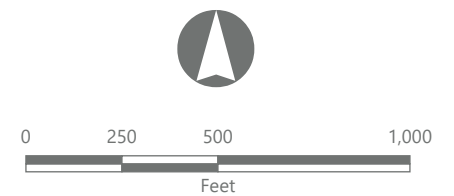
**94-c Permit Application
Matter No. 23-00038**

- Active Agricultural Land
- Mineral Soil Group
 - Group 1
 - Group 2
 - Group 3
 - Group 4
- Facility Components
 - Wind Turbine
 - Limit of Grading
 - Limit of Impervious Surface
 - Limit of Disturbance
 - Facility Site

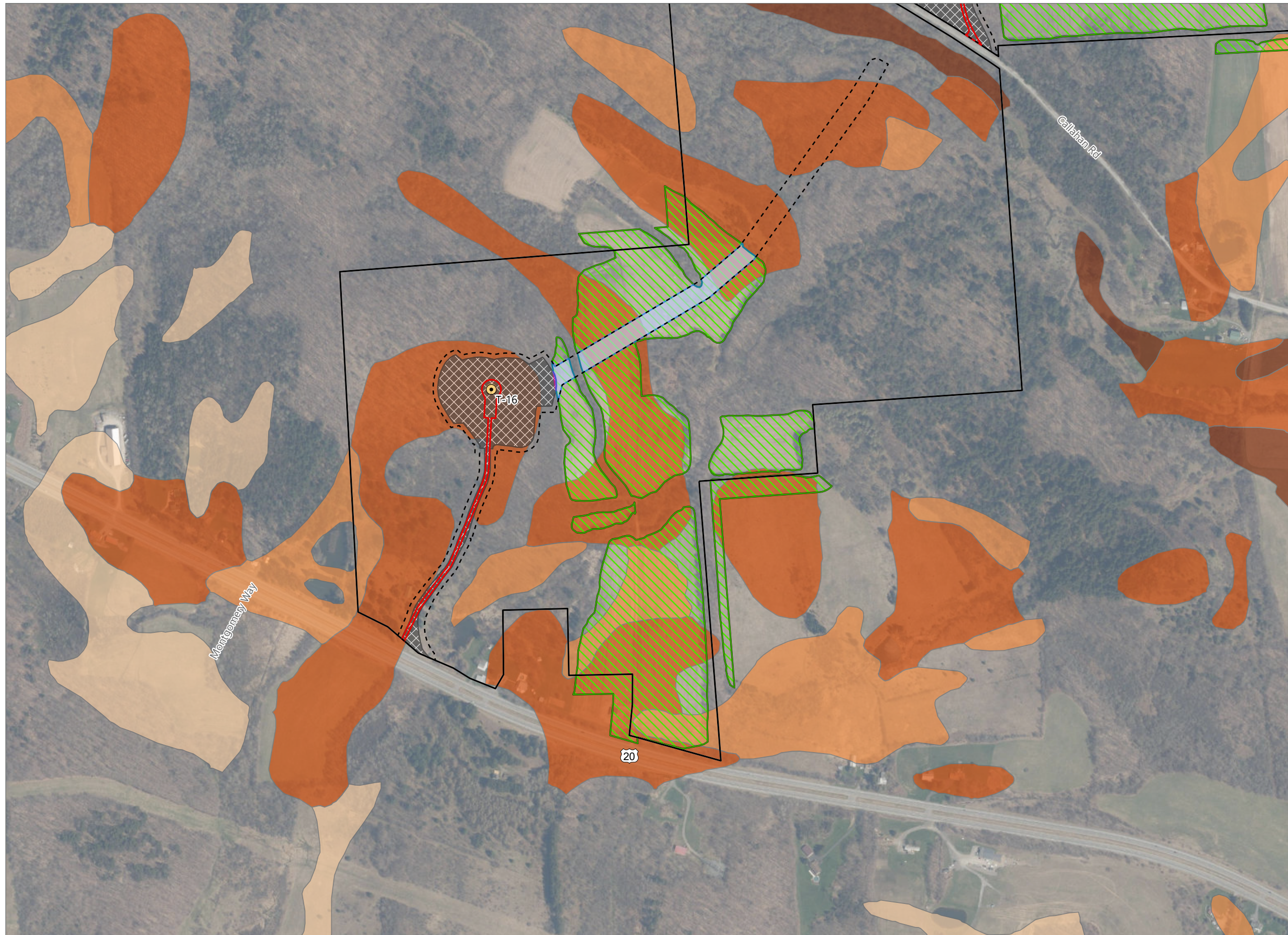
Note:
 *Areas impacted by the Facility that will be temporarily taken out of agricultural production during construction and operations.
 **Areas impacted by the Facility that will be temporarily taken out of agricultural production until the end of the construction period, at which point they will be restored and returned to agricultural use.



Sheet 10 of 15



Prepared February 7, 2024
 Basemap: USDA NAIP "2022 New York 60cm" orthoimagery map service



Hoffman Falls Wind

Towns of Eaton, Fenner, Nelson and Smithfield, Madison County, New York

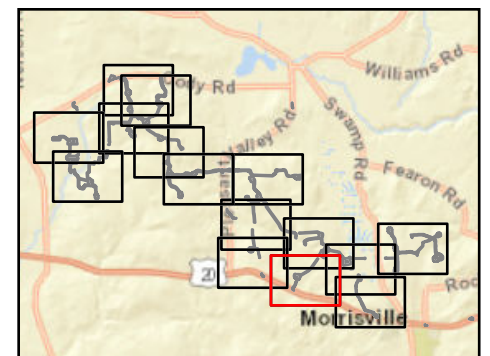
**94-c Permit Application
Matter No. 23-00038**

- Active Agricultural Land
- Temporary Impacts During Operation*
- Temporary Impacts During Construction**
- Mineral Soil Group
 - Group 1
 - Group 2
 - Group 3
 - Group 4
- Facility Components
 - Wind Turbine
 - Limit of Grading
 - Limit of Impervious Surface
 - Limit of Disturbance
 - Facility Site

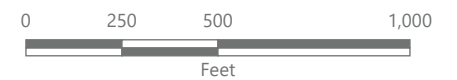
Note:

*Areas impacted by the Facility that will be temporarily taken out of agricultural production during construction and operations.

**Areas impacted by the Facility that will be temporarily taken out of agricultural production until the end of the construction period, at which point they will be restored and returned to agricultural use.



Sheet 11 of 15



Prepared February 7, 2024
Basemap: USDA NAIP "2022 New York 60cm" orthoimagery map service



Hoffman Falls Wind

Towns of Eaton, Fenner, Nelson and Smithfield, Madison County, New York

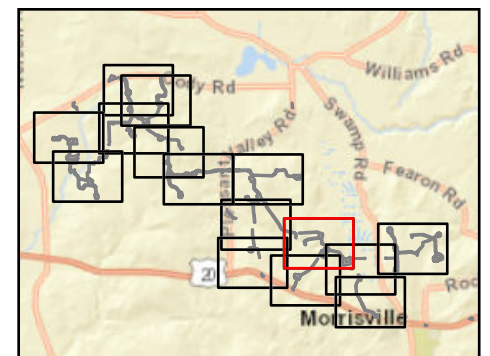
**94-c Permit Application
Matter No. 23-00038**

- Active Agricultural Land
- Temporary Impacts During Operation*
- Temporary Impacts During Construction**
- Mineral Soil Group
 - Group 1
 - Group 2
 - Group 3
 - Group 4
- Facility Components
 - Wind Turbine
 - Limit of Grading
 - Limit of Impervious Surface
 - Limit of Disturbance
 - Facility Site

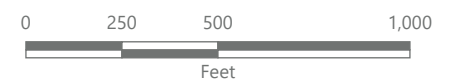
Note:

*Areas impacted by the Facility that will be temporarily taken out of agricultural production during construction and operations.

**Areas impacted by the Facility that will be temporarily taken out of agricultural production until the end of the construction period, at which point they will be restored and returned to agricultural use.



Sheet 12 of 15



Prepared February 7, 2024
Basemap: USDA NAIP "2022 New York 60cm" orthoimagery map service



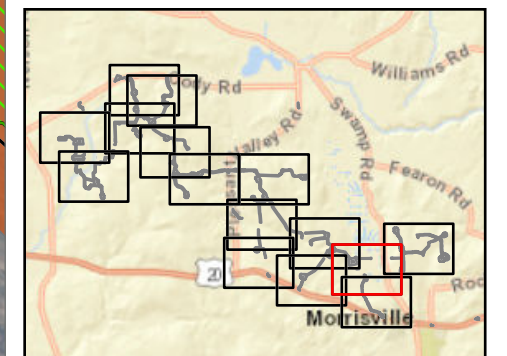
Hoffman Falls Wind

Towns of Eaton, Fenner, Nelson and Smithfield, Madison County, New York

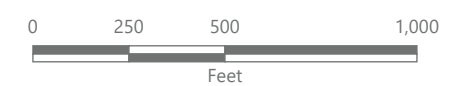
**94-c Permit Application
Matter No. 23-00038**

- Active Agricultural Land
- Temporary Impacts During Operation*
- Temporary Impacts During Construction**
- Mineral Soil Group
 - Group 1
 - Group 2
 - Group 3
- Facility Components
 - Wind Turbine
 - Limit of Grading
 - Limit of Impervious Surface
 - Limit of Disturbance
 - Facility Site

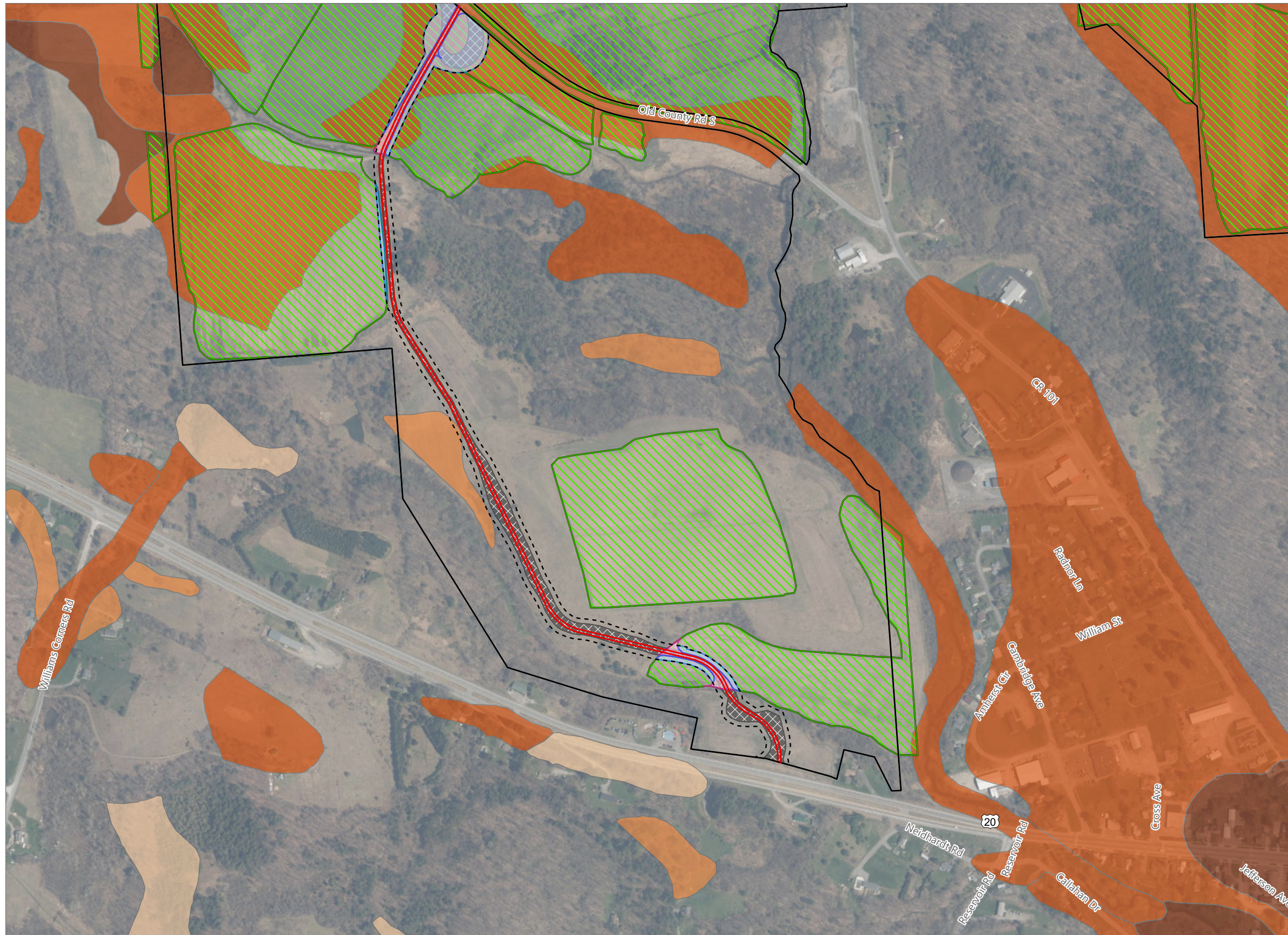
Note:
 *Areas impacted by the Facility that will be temporarily taken out of agricultural production during construction and operations.
 **Areas impacted by the Facility that will be temporarily taken out of agricultural production until the end of the construction period, at which point they will be restored and returned to agricultural use.



Sheet 13 of 15



Prepared February 7, 2024
 Basemap: USDA NAIP "2022 New York 60cm" orthoimagery map service



Hoffman Falls Wind

Towns of Eaton, Fenner, Nelson and Smithfield, Madison County, New York

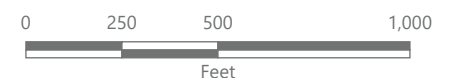
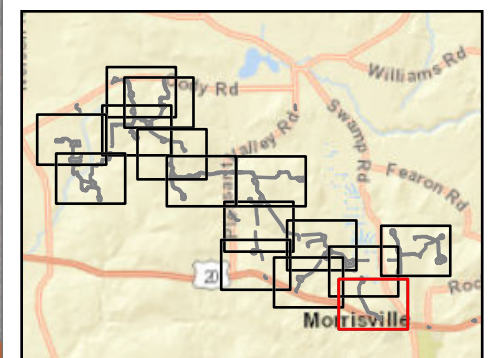
**94-c Permit Application
Matter No. 23-00038**

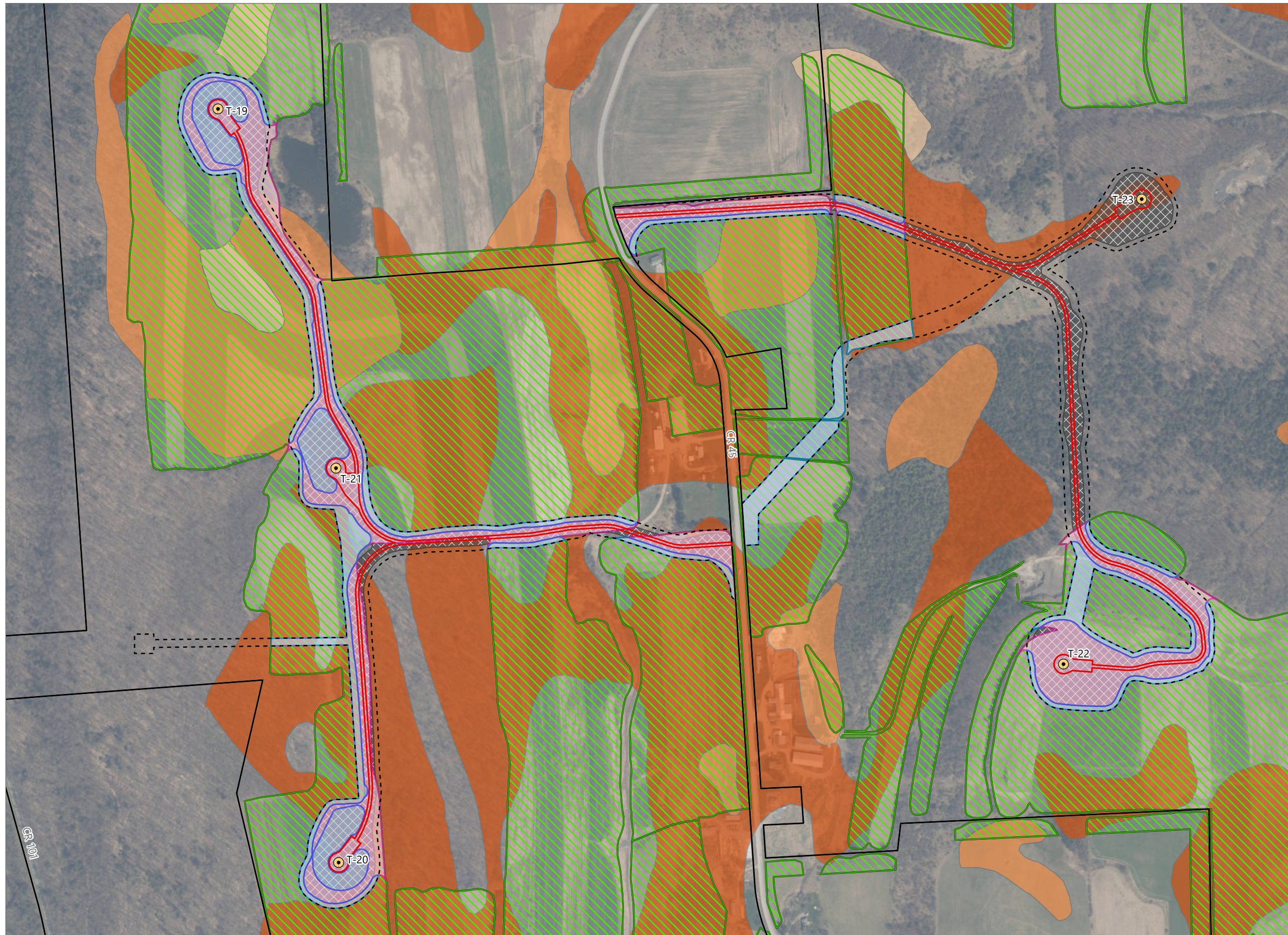
- Active Agricultural Land
- Temporary Impacts During Operation*
- Temporary Impacts During Construction**
- Mineral Soil Group
 - Group 1
 - Group 2
 - Group 3
 - Group 4
- Limit of Grading
- Limit of Impervious Surface
- Limit of Disturbance
- Facility Site

Note:

*Areas impacted by the Facility that will be temporarily taken out of agricultural production during construction and operations.

**Areas impacted by the Facility that will be temporarily taken out of agricultural production until the end of the construction period, at which point they will be restored and returned to agricultural use.





Hoffman Falls Wind

Towns of Eaton, Fenner, Nelson and Smithfield, Madison County, New York

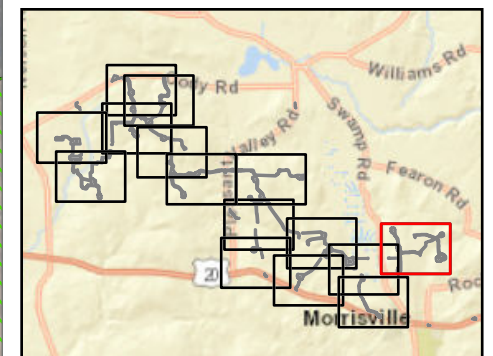
**94-c Permit Application
Matter No. 23-00038**

- Active Agricultural Land
- Temporary Impacts During Operation*
- Temporary Impacts During Construction**
- Mineral Soil Group
 - Group 2
 - Group 3
 - Group 4
- Facility Components
 - Wind Turbine
 - Limit of Grading
 - Limit of Impervious Surface
 - Limit of Disturbance
 - Facility Site

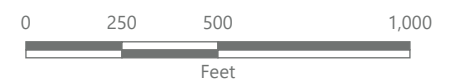
Note:

*Areas impacted by the Facility that will be temporarily taken out of agricultural production during construction and operations.

**Areas impacted by the Facility that will be temporarily taken out of agricultural production until the end of the construction period, at which point they will be restored and returned to agricultural use.



Sheet 15 of 15



Prepared February 7, 2024
Basemap: USDA NAIP "2022 New York 60cm" orthoimagery map service