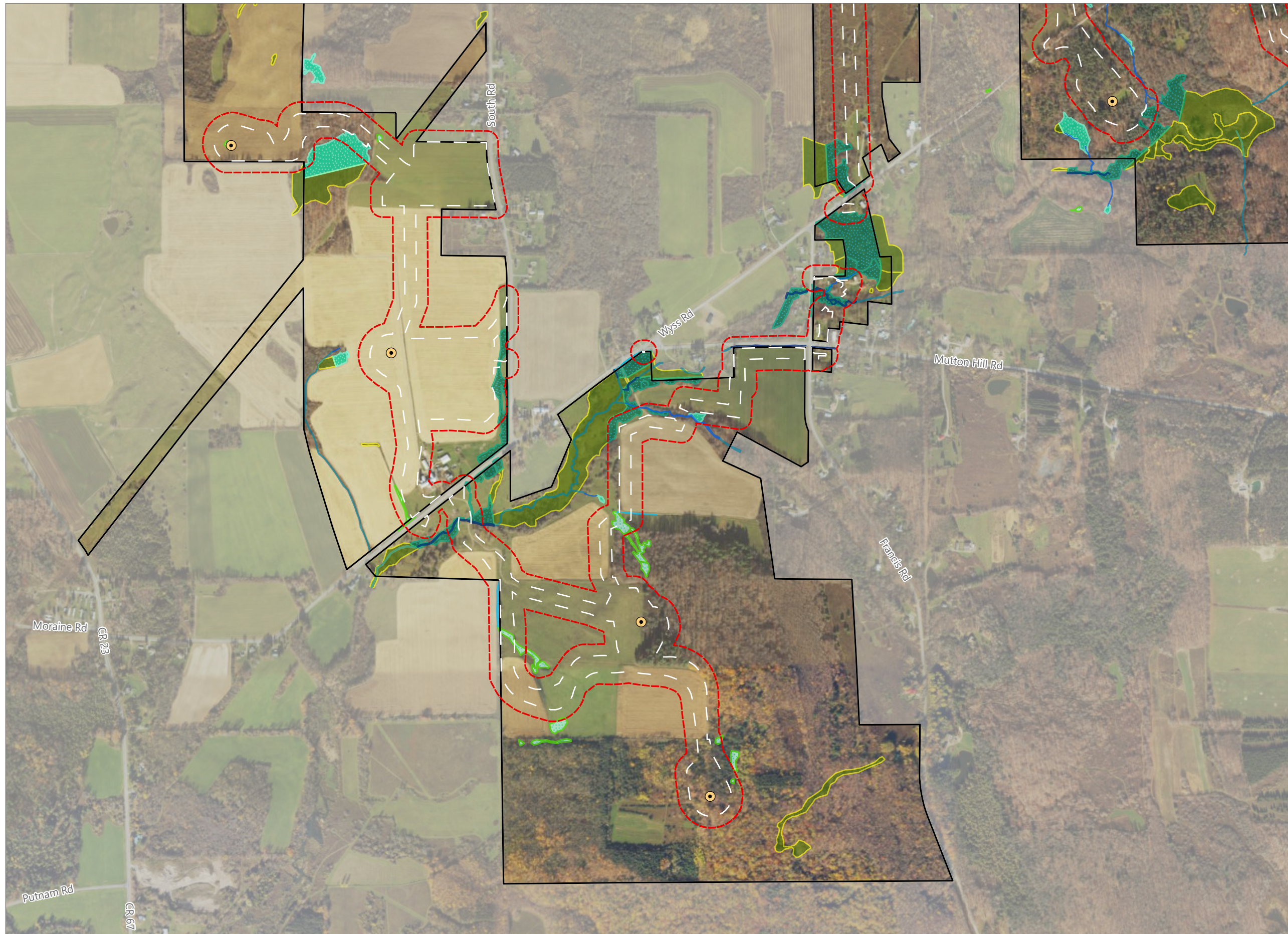


Figure 14-1. Delineated Wetlands and Streams

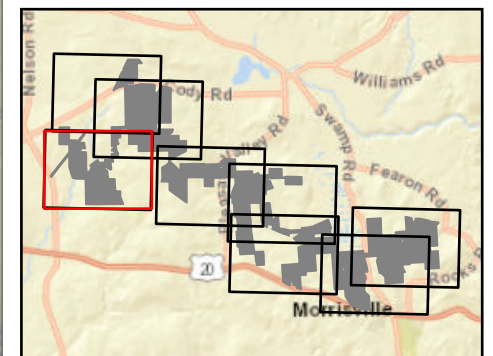


### Hoffman Falls Wind

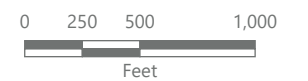
Towns of Eaton, Fenner, Nelson and Smithfield, Madison County, New York

**94-c Permit Application  
Matter No. 23-00038**

- Delineated Stream Non-jurisdictional
  - Delineated Stream w/ Federal Jurisdiction
  - Delineated Stream w/ State & Federal Jurisdiction
  - Delineated Wetland Non-jurisdictional
  - Delineated Wetland w/ Federal Jurisdiction
  - Delineated Wetland w/ State & Federal Jurisdiction
  - Approximate Stream
  - Approximate Wetland
- Facility Components
- Wind Turbine
  - Limit of Disturbance
  - Facility Site
  - Wetland Study Area



Sheet 1 of 8



Prepared February 7, 2024  
Basemap: USDA NAIP "2022 New York 60cm" orthoimagery map service

Figure 14-1. Delineated Wetlands and Streams

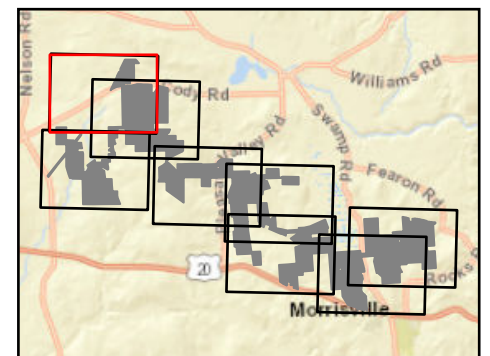


### Hoffman Falls Wind

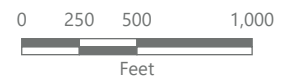
Towns of Eaton, Fenner, Nelson and  
Smithfield, Madison County,  
New York

**94-c Permit Application  
Matter No. 23-00038**

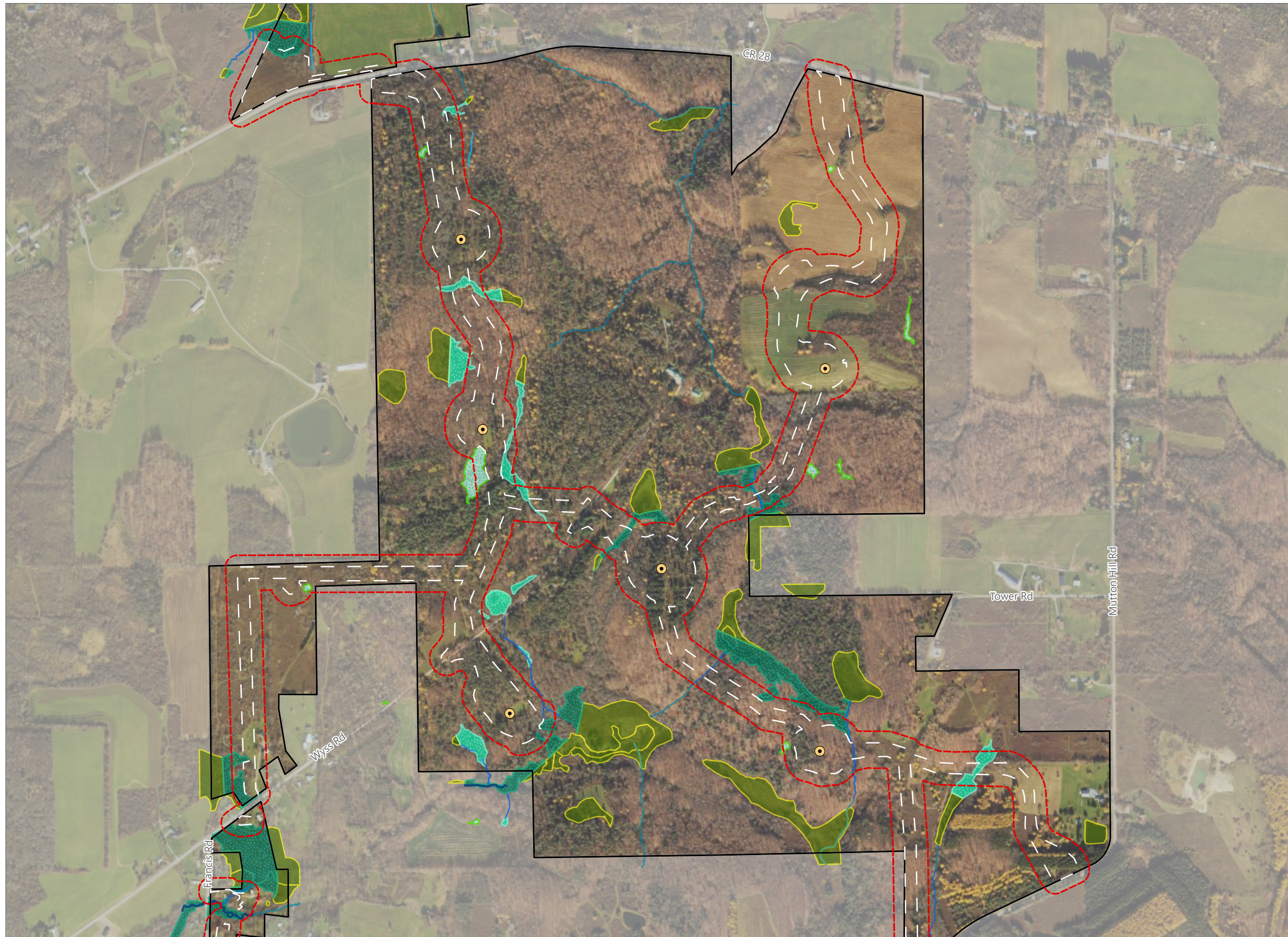
- Delineated Stream Non-jurisdictional
- Delineated Stream w/  
Federal Jurisdiction
- Delineated Wetland Non-jurisdictional
- Delineated Wetland w/  
Federal Jurisdiction
- Delineated Wetland w/  
State & Federal Jurisdiction
- Approximate Stream
- Approximate Wetland
- Facility Components**
- Wind Turbine
- Limit of Disturbance
- Facility Site
- Wetland Study Area



Sheet 2 of 8



Prepared February 7, 2024  
Basemap: USDA NAIP "2022 New York 60cm" orthoimagery map  
service

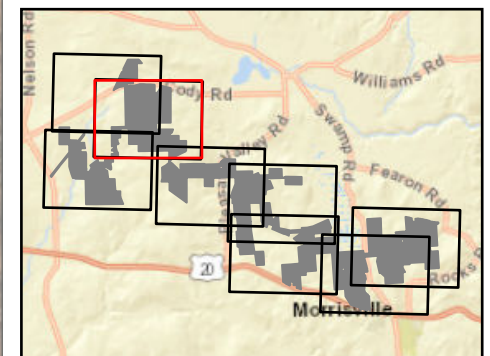


### Hoffman Falls Wind

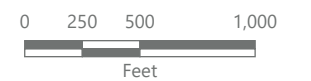
Towns of Eaton, Fenner, Nelson and Smithfield, Madison County, New York

**94-c Permit Application  
Matter No. 23-00038**

- Delineated Stream Non-jurisdictional
  - Delineated Stream w/ Federal Jurisdiction
  - Delineated Stream w/ State & Federal Jurisdiction
  - Delineated Wetland Non-jurisdictional
  - Delineated Wetland w/ Federal Jurisdiction
  - Delineated Wetland w/ State & Federal Jurisdiction
  - Approximate Stream
  - Approximate Wetland
- Facility Components
- Wind Turbine
  - Limit of Disturbance
  - Facility Site
  - Wetland Study Area



Sheet 3 of 8



Prepared February 7, 2024  
Basemap: USDA NAIP "2022 New York 60cm" orthoimagery map service

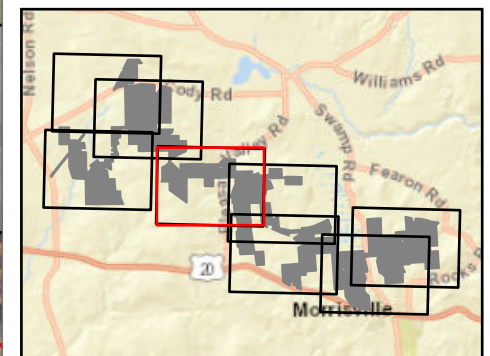


### Hoffman Falls Wind

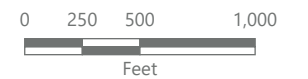
Towns of Eaton, Fenner, Nelson and  
Smithfield, Madison County,  
New York

**94-c Permit Application  
Matter No. 23-00038**

- Delineated Stream Non-jurisdictional
- Delineated Stream w/  
Federal Jurisdiction
- Delineated Stream w/  
State & Federal Jurisdiction
- Delineated Wetland Non-jurisdictional
- Delineated Wetland w/  
Federal Jurisdiction
- Delineated Wetland w/  
State & Federal Jurisdiction
- Approximate Stream
- Approximate Wetland
- Facility Components**
- Wind Turbine
- Limit of Disturbance
- Facility Site
- Wetland Study Area



Sheet 4 of 8



Prepared February 7, 2024  
Basemap: USDA NAIP "2022 New York 60cm" orthoimagery map  
service

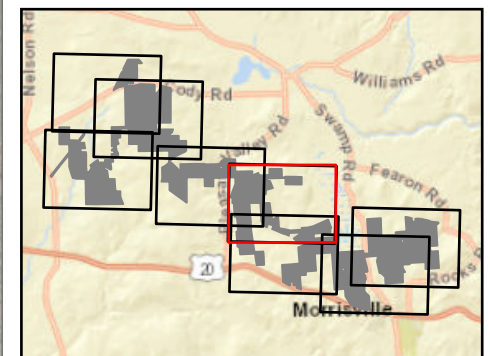


### Hoffman Falls Wind

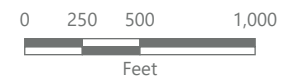
Towns of Eaton, Fenner, Nelson and Smithfield, Madison County, New York

**94-c Permit Application  
Matter No. 23-00038**

- Delineated Stream Non-jurisdictional
  - Delineated Stream w/ Federal Jurisdiction
  - Delineated Stream w/ State & Federal Jurisdiction
  - Delineated Wetland Non-jurisdictional
  - Delineated Wetland w/ Federal Jurisdiction
  - Delineated Wetland w/ State & Federal Jurisdiction
  - Approximate Stream
  - Approximate Wetland
- Facility Components
- Wind Turbine
  - Limit of Disturbance
  - Facility Site
  - Wetland Study Area

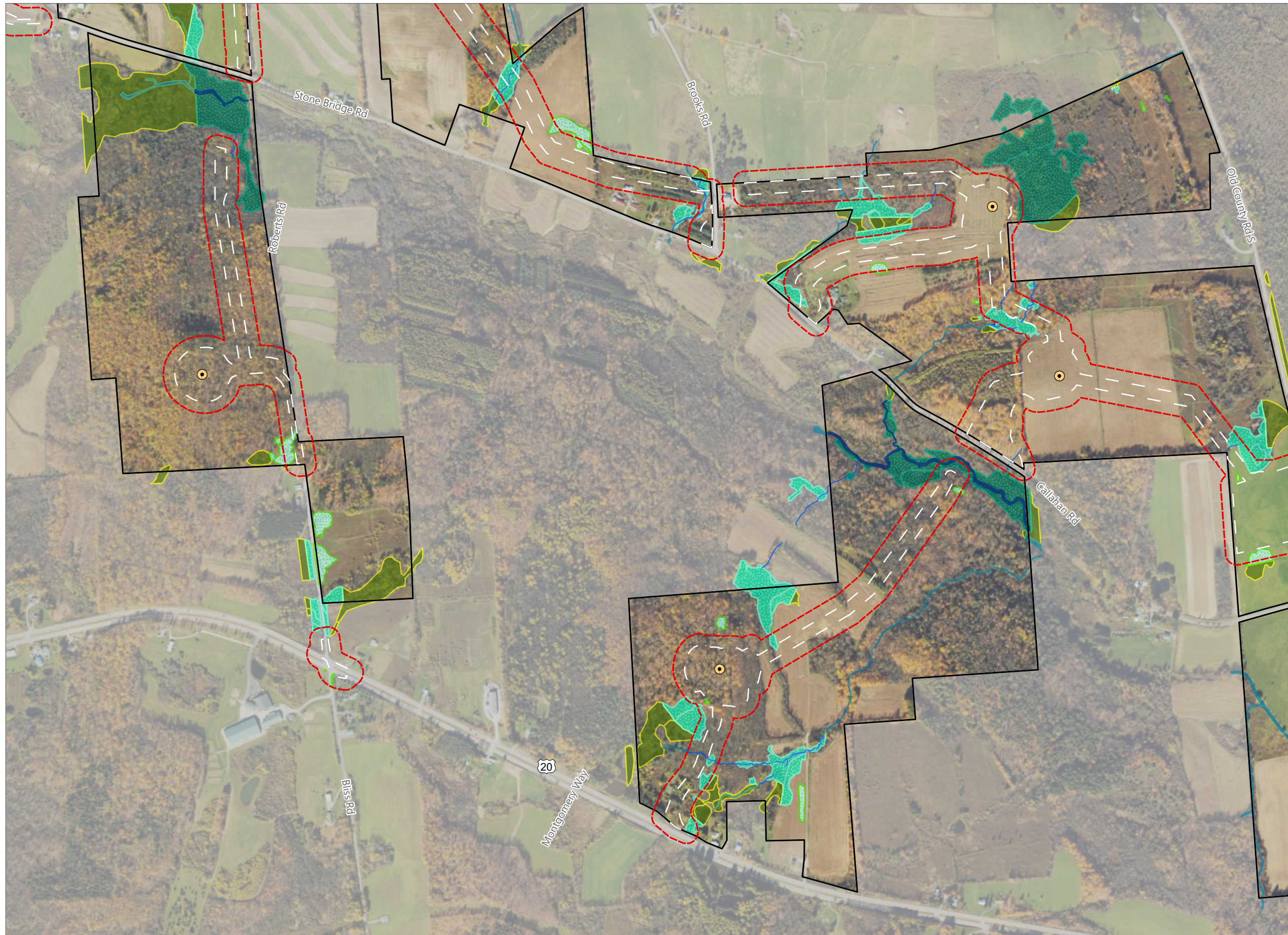


Sheet 5 of 8



Prepared February 7, 2024  
Basemap: USDA NAIP "2022 New York 60cm" orthoimagery map service

Figure 14-1. Delineated Wetlands and Streams

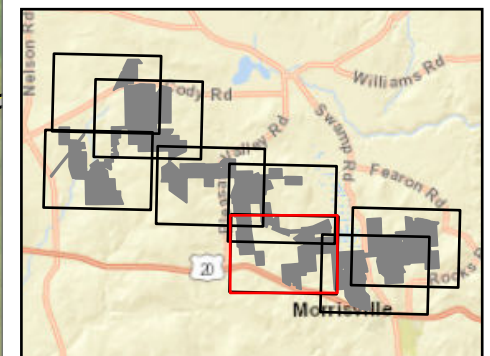


### Hoffman Falls Wind

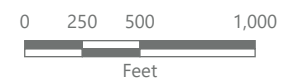
Towns of Eaton, Fenner, Nelson and  
Smithfield, Madison County,  
New York

**94-c Permit Application  
Matter No. 23-00038**

- Delineated Stream Non-jurisdictional
- Delineated Stream w/  
Federal Jurisdiction
- Delineated Stream w/  
State & Federal Jurisdiction
- Delineated Wetland Non-jurisdictional
- Delineated Wetland w/  
Federal Jurisdiction
- Delineated Wetland w/  
State & Federal Jurisdiction
- Approximate Stream
- Approximate Wetland
- Facility Components
  - Wind Turbine
  - Limit of Disturbance
  - Facility Site
  - Wetland Study Area



Sheet 6 of 8



Prepared February 7, 2024  
Basemap: USDA NAIP "2022 New York 60cm" orthoimagery map  
service

Figure 14-1. Delineated Wetlands and Streams

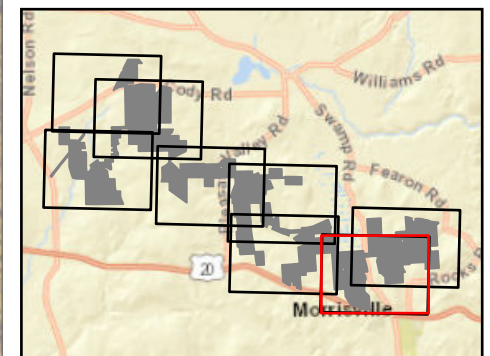


### Hoffman Falls Wind

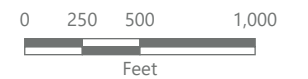
Towns of Eaton, Fenner, Nelson and Smithfield, Madison County, New York

**94-c Permit Application  
Matter No. 23-00038**

- Delineated Stream Non-jurisdictional
  - Delineated Stream w/ Federal Jurisdiction
  - Delineated Stream w/ State & Federal Jurisdiction
  - Delineated Wetland Non-jurisdictional
  - Delineated Wetland w/ Federal Jurisdiction
  - Delineated Wetland w/ State & Federal Jurisdiction
  - Approximate Stream
  - Approximate Wetland
- Facility Components
- Wind Turbine
  - Limit of Disturbance
  - Facility Site
  - Wetland Study Area



Sheet 7 of 8



Prepared February 7, 2024  
Basemap: USDA NAIP "2022 New York 60cm" orthoimagery map service

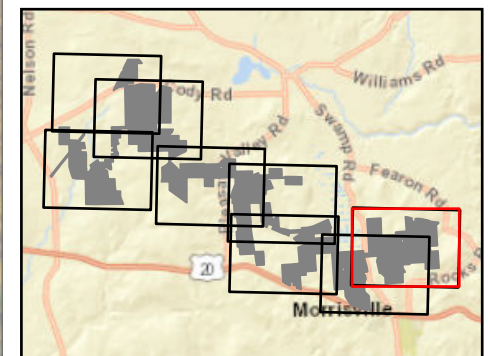


### Hoffman Falls Wind

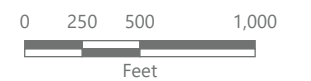
Towns of Eaton, Fenner, Nelson and Smithfield, Madison County, New York

**94-c Permit Application  
Matter No. 23-00038**

- Delineated Stream Non-jurisdictional
  - Delineated Stream w/ Federal Jurisdiction
  - Delineated Stream w/ State & Federal Jurisdiction
  - Delineated Wetland Non-jurisdictional
  - Delineated Wetland w/ Federal Jurisdiction
  - Delineated Wetland w/ State & Federal Jurisdiction
  - Approximate Stream
  - Approximate Wetland
- Facility Components
- Wind Turbine
  - Limit of Disturbance
  - Facility Site
  - Wetland Study Area



Sheet 8 of 8



Prepared February 7, 2024  
Basemap: USDA NAIP "2022 New York 60cm" orthoimagery map service