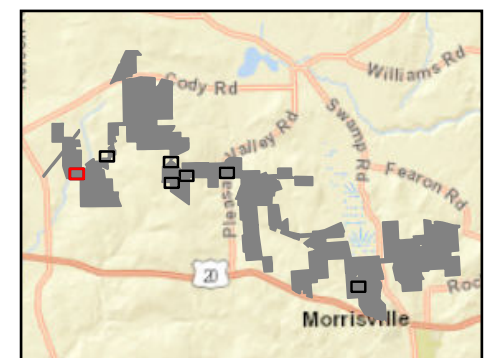


Hoffman Falls Wind

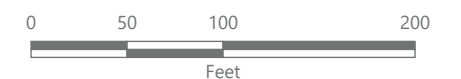
Towns of Eaton, Fenner, Nelson and Smithfield, Madison County, New York

**94-c Permit Application
Matter No. 23-00038**

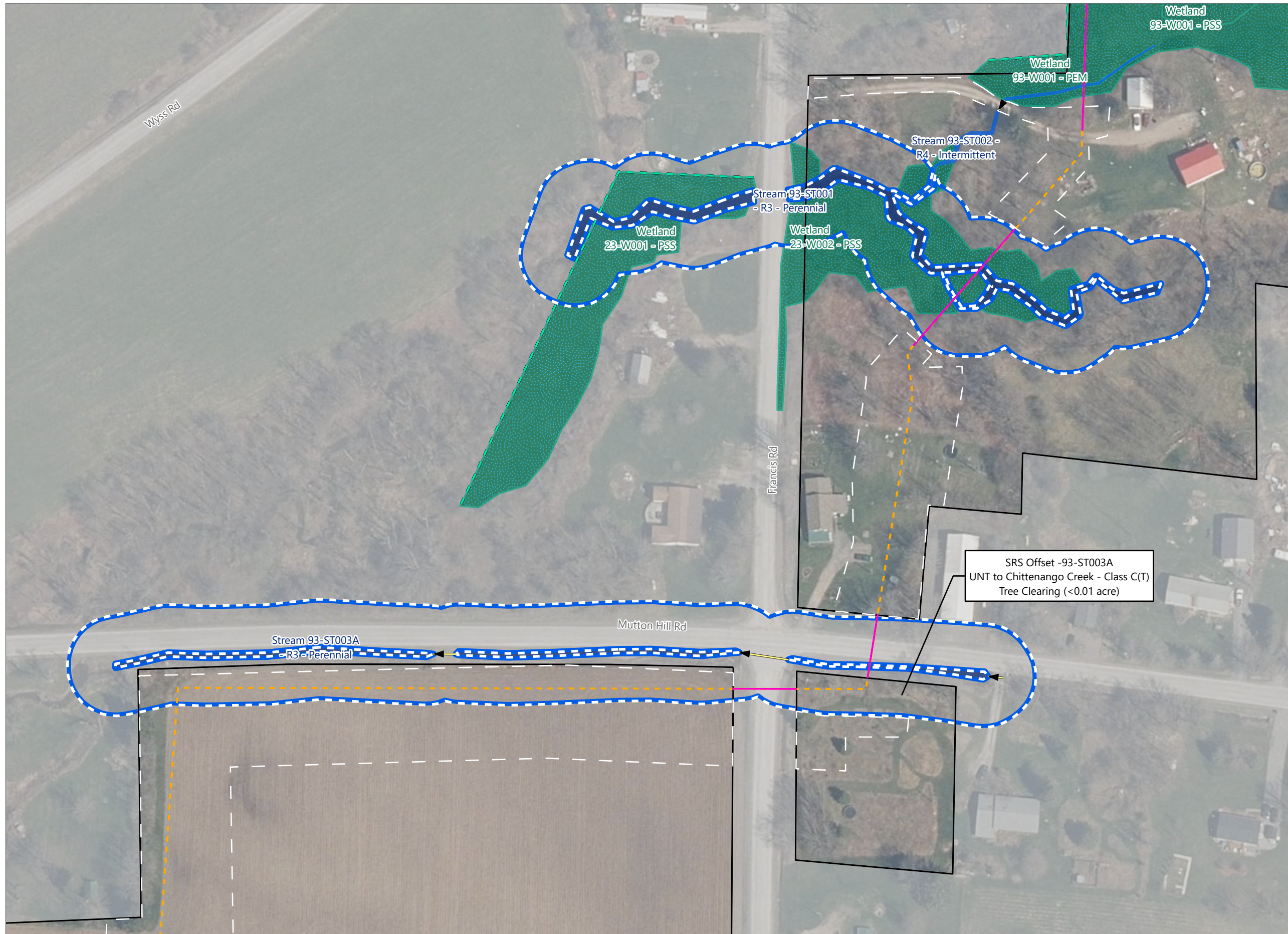
- Wetlands and Streams**
- Culvert
 - Wetland Continues
 - Delineated Stream w/ State & Federal Jurisdiction
 - State-Regulated Stream (SRS) 50-foot Offset
 - Delineated Wetland Non-jurisdictional
 - Delineated Wetland w/ State & Federal Jurisdiction
- State-Regulated Stream Impact**
- State-Regulated Stream Impact
 - State-Regulated Stream 50-foot Offset Area Impact
- Grading**
- Grading
- Facility Components**
- Access Road
 - Collection Line
 - Collection Line Bore
 - Limit of Grading
 - Limit of Disturbance
 - Facility Site



Sheet 1 of 7



Prepared February 12, 2024
Basemap: USDA NAIP "2022 New York 60cm" orthoimagery map service

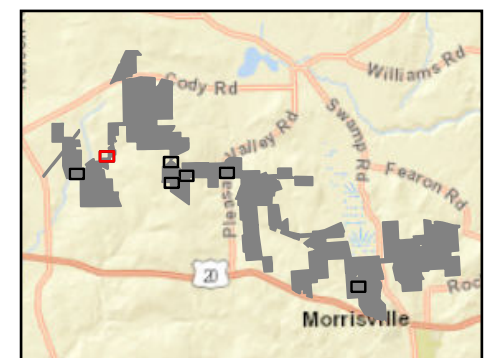


Hoffman Falls Wind

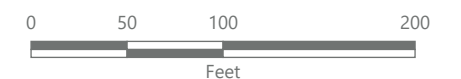
Towns of Eaton, Fenner, Nelson and Smithfield, Madison County, New York

**94-c Permit Application
Matter No. 23-00038**

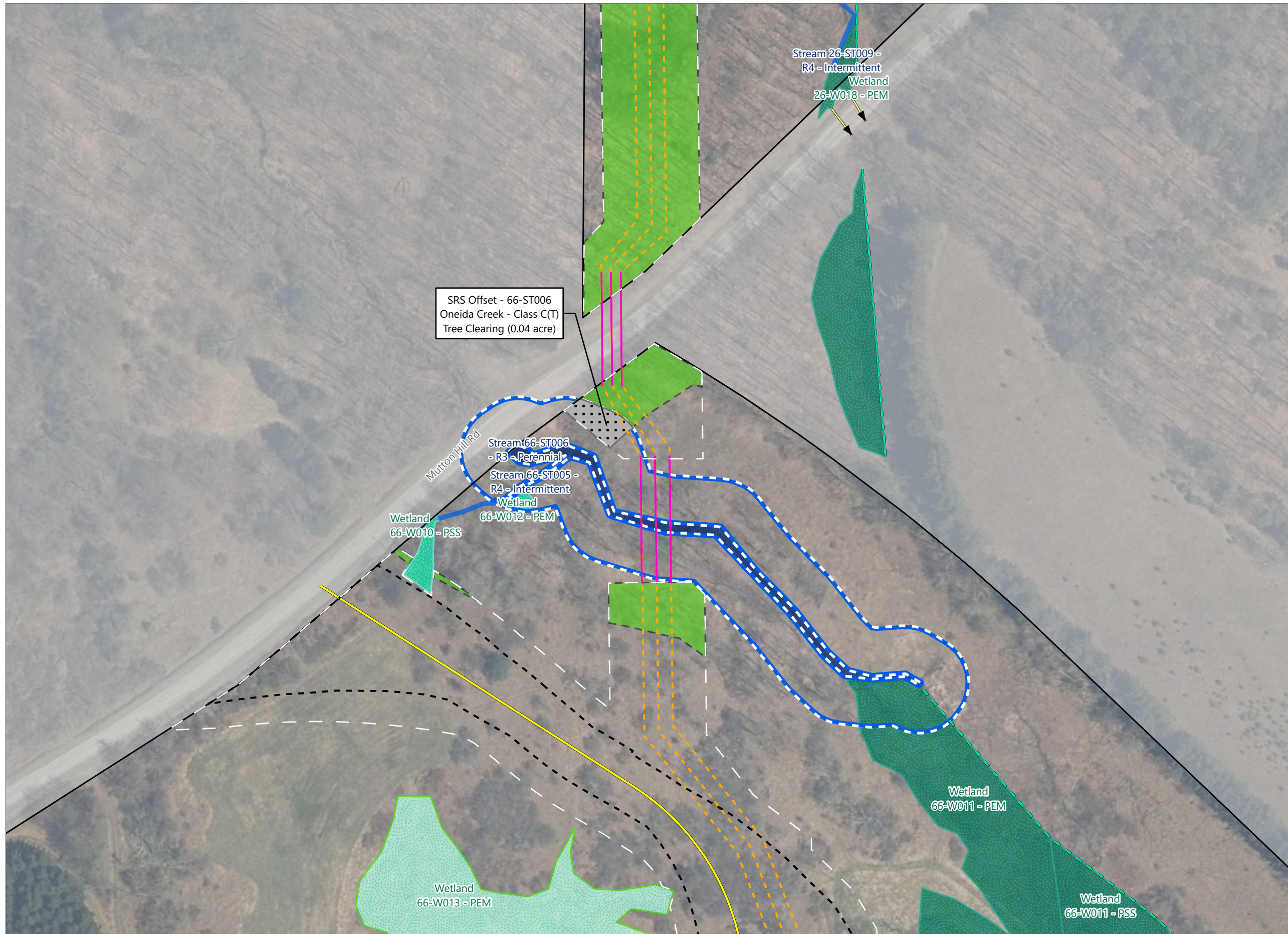
- Wetlands and Streams**
- ▶ Culvert
 - Wetland Continues
 - Delineated Stream w/ Federal Jurisdiction
 - Delineated Stream w/ State & Federal Jurisdiction
 - State-Regulated Stream (SRS) 50-foot Offset
 - Delineated Wetland w/ State & Federal Jurisdiction
- State-Regulated Stream 50-foot Offset Area Impact**
- Tree Clearing
- Facility Components**
- Collection Line
 - Collection Line Bore
 - Limit of Disturbance
 - Facility Site



Sheet 2 of 7



Prepared February 12, 2024
Basemap: USDA NAIP "2022 New York 60cm" orthoimagery map service

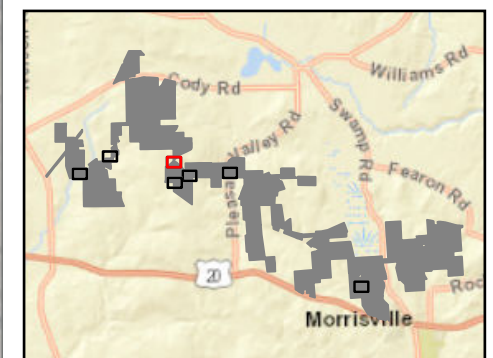


Hoffman Falls Wind

Towns of Eaton, Fenner, Nelson and Smithfield, Madison County, New York

**94-c Permit Application
Matter No. 23-00038**

- Wetlands and Streams**
- Culvert
 - Wetland Continues
 - Delineated Stream w/ Federal Jurisdiction
 - Delineated Stream w/ State & Federal Jurisdiction
 - State-Regulated Stream (SRS) 50-foot Offset
 - Delineated Wetland Non-jurisdictional
 - Delineated Wetland w/ Federal Jurisdiction
 - Delineated Wetland w/ State & Federal Jurisdiction
- State-Regulated Stream 50-foot Offset Area Impact**
- Tree Clearing
- Facility Components**
- Access Road
 - Collection Line
 - Collection Line Bore
- Wetlands and Streams**
- Limit of Clearing
- Facility Components**
- Limit of Grading
 - Limit of Disturbance
 - Facility Site



Sheet 3 of 7



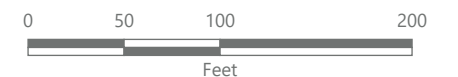
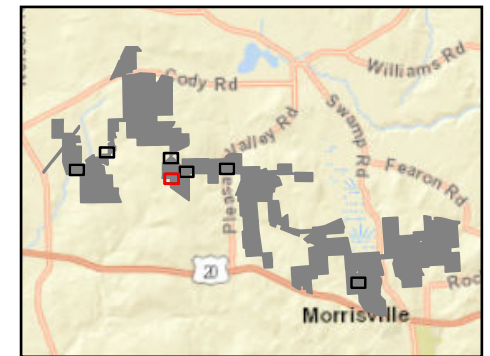
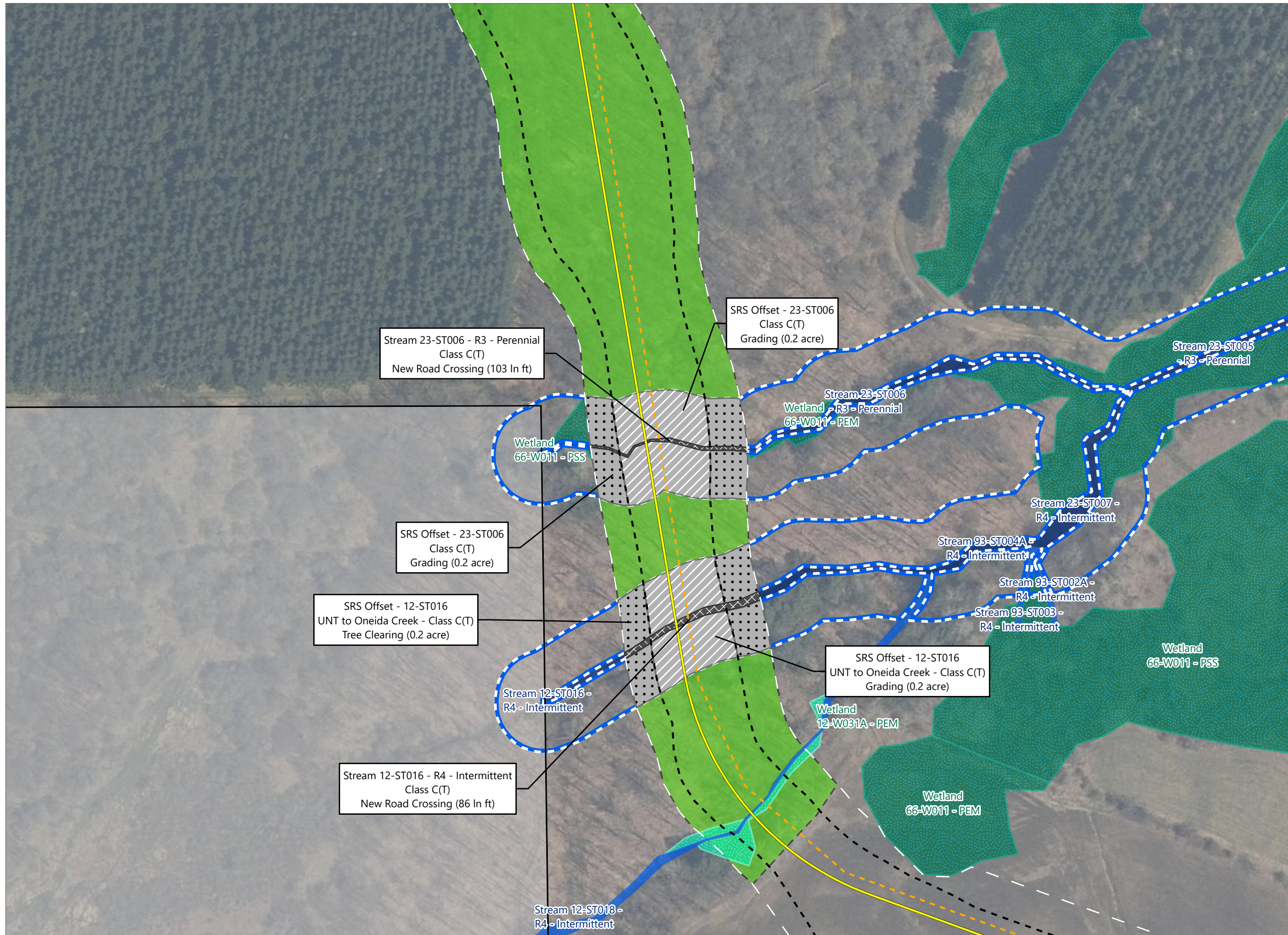
Prepared February 12, 2024
Basemap: USDA NAIP "2022 New York 60cm" orthoimagery map service

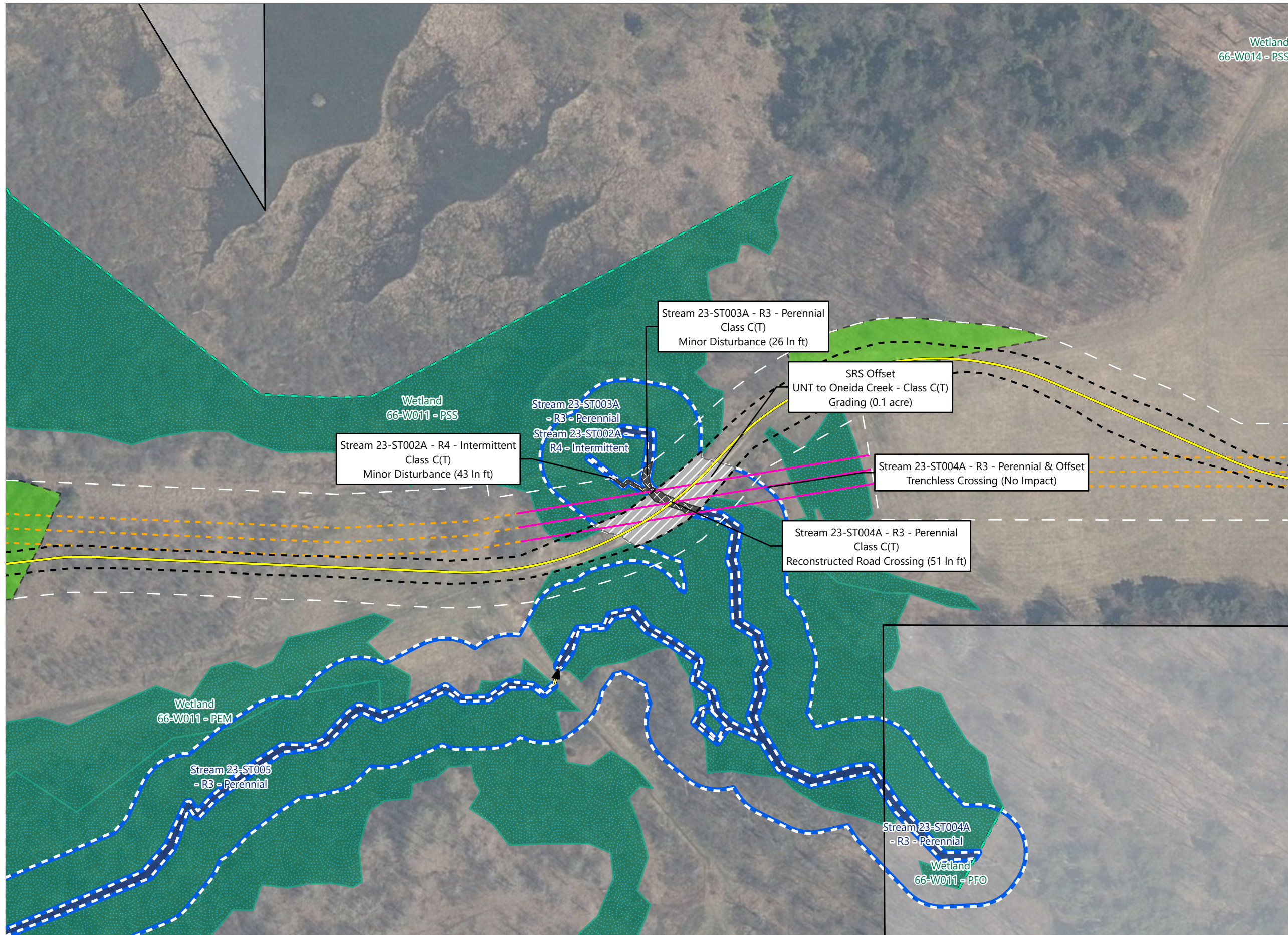
Hoffman Falls Wind

Towns of Eaton, Fenner, Nelson and Smithfield, Madison County, New York

94-c Permit Application
Matter No. 23-00038

- Wetlands and Streams**
- Delineated Stream w/ Federal Jurisdiction
 - Delineated Stream w/ State & Federal Jurisdiction
 - State-Regulated Stream (SRS) 50-foot Offset
 - Delineated Wetland w/ Federal Jurisdiction
 - Delineated Wetland w/ State & Federal Jurisdiction
- State-Regulated Stream Impact**
- State-Regulated Stream Impact
- State-Regulated Stream 50-foot Offset Area Impact**
- Grading
 - Tree Clearing
- Facility Components**
- Access Road
 - Collection Line
- Wetlands and Streams**
- Limit of Clearing
- Facility Components**
- Limit of Grading
 - Limit of Disturbance
 - Facility Site



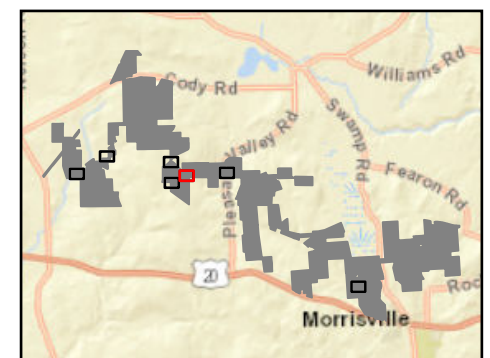


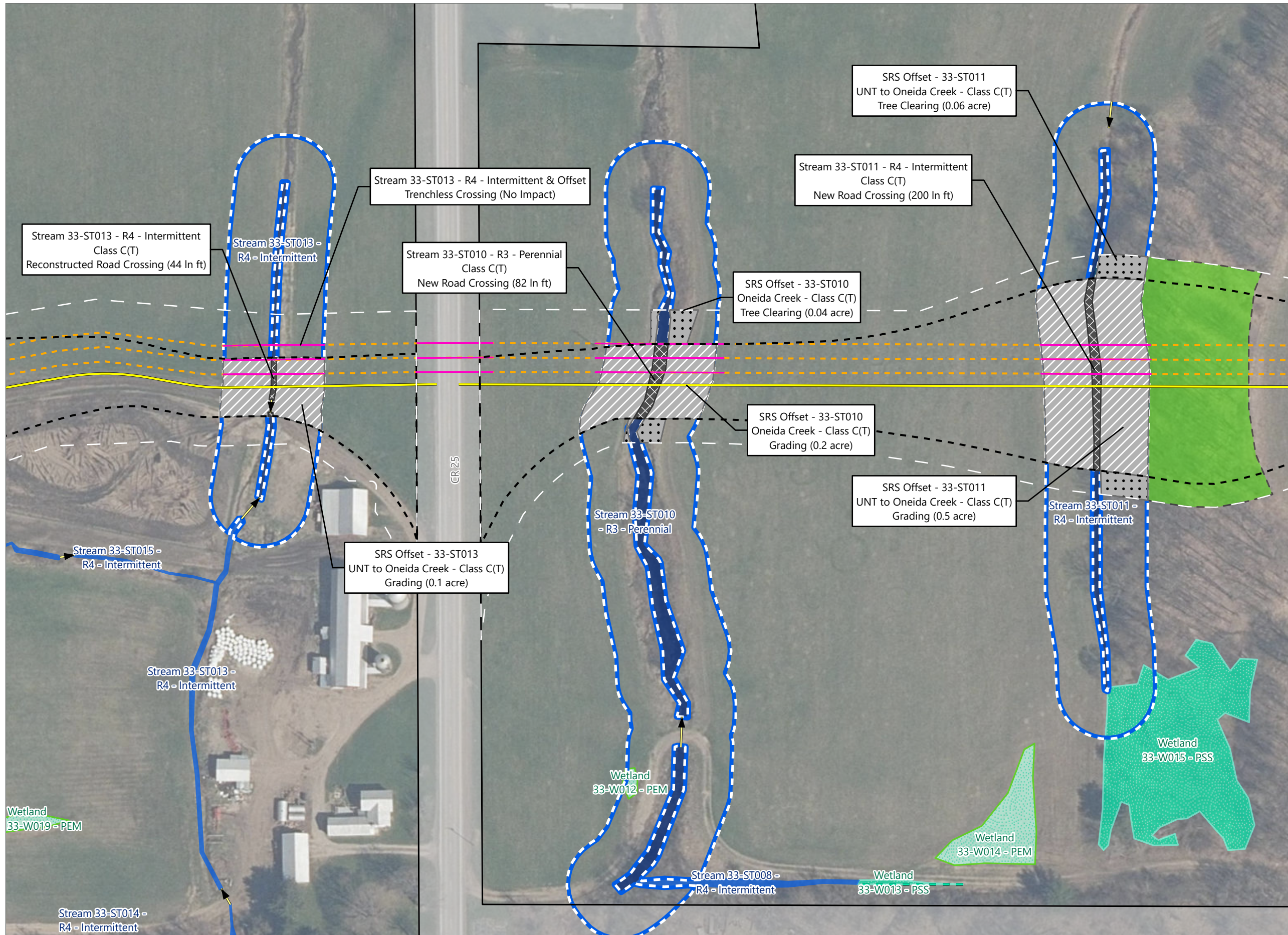
Hoffman Falls Wind

Towns of Eaton, Fenner, Nelson and Smithfield, Madison County, New York

**94-c Permit Application
Matter No. 23-00038**

- Wetlands and Streams**
- ▶ Culvert
 - Wetland Continues
 - Delineated Stream w/ State & Federal Jurisdiction
 - ▬ State-Regulated Stream (SRS) 50-foot Offset
 - Delineated Wetland w/ Federal Jurisdiction
 - Delineated Wetland w/ State & Federal Jurisdiction
- State-Regulated Stream Impact**
- ▨ State-Regulated Stream Impact
 - ▨ State-Regulated Stream 50-foot Offset Area Impact
- Facility Components**
- Access Road
 - Collection Line
 - Collection Line Bore
- Wetlands and Streams**
- Limit of Clearing
- Facility Components**
- ▨ Limit of Grading
 - ▨ Limit of Disturbance
 - ▭ Facility Site



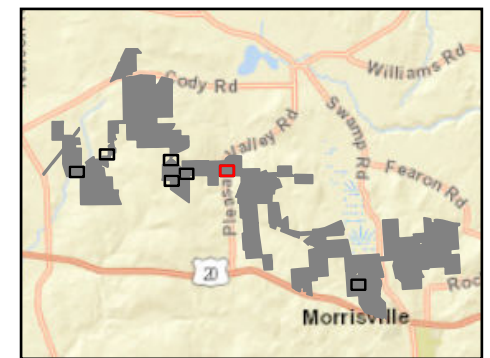


Hoffman Falls Wind

Towns of Eaton, Fenner, Nelson and Smithfield, Madison County, New York

94-c Permit Application
Matter No. 23-00038

- Wetlands and Streams
- Culvert
- Wetland Continues
- Delineated Stream w/ Federal Jurisdiction
- Delineated Stream w/ State & Federal Jurisdiction
- State-Regulated Stream (SRS) 50-foot Offset
- Delineated Wetland Non-jurisdictional
- Delineated Wetland w/ Federal Jurisdiction
- State-Regulated Stream Impact
- State-Regulated Stream Impact
- State-Regulated Stream 50-foot Offset Area Impact
- Grading
- Tree Clearing
- Facility Components
- Access Road
- Collection Line
- Collection Line Bore
- Wetlands and Streams
- Limit of Clearing
- Facility Components
- Limit of Grading
- Limit of Disturbance
- Facility Site



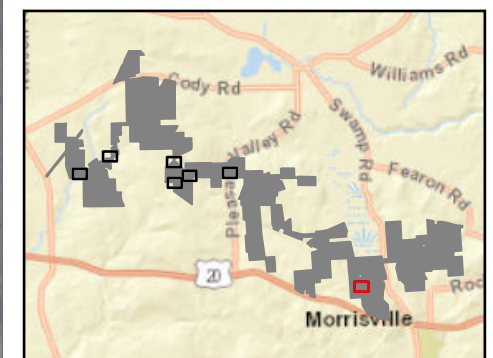


Hoffman Falls Wind

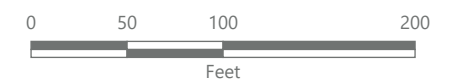
Towns of Eaton, Fenner, Nelson and Smithfield, Madison County, New York

**94-c Permit Application
Matter No. 23-00038**

- Wetlands and Streams
 - Wetland Continues
 - Delineated Stream w/ State & Federal Jurisdiction
 - State-Regulated Stream (SRS) 50-foot Offset
 - Delineated Wetland w/ State & Federal Jurisdiction
- State-Regulated Stream Impact
 - State-Regulated Stream Impact
 - State-Regulated Stream 50-foot Offset Area Impact
- Facility Components
 - Access Road
- Wetlands and Streams
 - Limit of Clearing
- Facility Components
 - Limit of Grading
 - Limit of Disturbance
 - Facility Site



Sheet 7 of 7



Prepared February 12, 2024
Basemap: USDA NAIP "2022 New York 60cm" orthoimagery map service