



Field Data Sheet





Field Data Sheet

Notes :

Do you need to report observations of another open field?

Yes



Field Data Sheet

Corresponding Point ID(s): 79

Anthropogenic Disturbance/Management Practices: None notable

Primary Open Field Cover Type: Row Cropland (Active)

Estimated Grass Cover (%): 1-10%

Estimated Forb Cover (%): 25-50%

Estimated Woody Vegetation Cover (%): None

Estimated Bare Ground (%): 25-50%

Estimated Litter Depth (inches): None

Average Vegetation Height (inches): 54-60

Dominant Plant Species (Common Names): Corn

Invasive Plant Species (Common Names):

Representative Photo(s):





Field Data Sheet





Field Data Sheet

Notes :

Do you need to report observations of another open field?

Yes



Field Data Sheet

Corresponding Point ID(s): 80

Anthropogenic Disturbance/Management Practices: Farm Equipment Noise

Primary Open Field Cover Type: Field Cropland (including hay, wheat, oats, etc.)

Estimated Grass Cover (%): 25-50%

Estimated Forb Cover (%): 25-50%

Estimated Woody Vegetation Cover (%): None

Estimated Bare Ground (%): 1-10%

Estimated Litter Depth (inches): 0-1"

Average Vegetation Height (inches): 4-6

Dominant Plant Species (Common Names): Grass, clover

Invasive Plant Species (Common Names):

Representative Photo(s):





Field Data Sheet





Field Data Sheet

Notes :

Do you need to report observations of another open field?

Yes



Field Data Sheet

Corresponding Point ID(s): 78

Anthropogenic Disturbance/Management Practices: Farm Equipment In Use

Primary Open Field Cover Type: Field Cropland (including hay, wheat, oats, etc.)

Estimated Grass Cover (%): 25-50%

Estimated Forb Cover (%): 25-50%

Estimated Woody Vegetation Cover (%): None

Estimated Bare Ground (%): None

Estimated Litter Depth (inches): 0-1"

Average Vegetation Height (inches): 12-18

Dominant Plant Species (Common Names): Grass, alfalfa, clover

Invasive Plant Species (Common Names):

Representative Photo(s):





Field Data Sheet





Field Data Sheet

Notes :

Do you need to report observations of another open field?



Field Data Sheet

Weather Conditions at End of Survey

Temperature (°F): 77

Wind Speed (mph): 4 – 7 (Light Breeze; Leaves rustle)

Wind Direction: S

Cloud Cover: None (Clear)

Visibility: Good (10+ miles; clear)

Precipitation: None (Clear)

Weather Notes: Clouds blew off

Were there any notable weather events/changes during the survey? No

Bird Observation Summary

Were any Endangered/Threatened Species observed?

No

Were any Species of Special Concern observed?

No

Were probable, possible, or confirmed breeding behaviors observed for any Listed Species (Endangered/Threatened/Special Concern)?

No

Were there additional photos documenting birds observed, habitat conditions, and/or other features of interest?

No

Additional Photo(s):

Were any alternate point count survey locations used due to access or visual constraints?

No

Alternate Point Count Survey Locations:



Field Data Sheet

**Incidental bird species observed outside of timed point count surveys
(Alpha Codes or Common Names):**

WITU, ROPI

Overall Survey Notes:



Field Data Sheet

Breeding Bird Survey

Submitted By: fsimeone@edrdpc.com

Submitted Time: July 17, 2023 11:16 AM

Survey Information

Project Name: Hoffman Falls

Survey Date: July 17, 2023

Surveyor Name: Frank Simeone

Points Surveyed: 18 Alt, 19-21, 24, 27-35.1

Survey Start Time: 05:08

Survey End Time: 10:02

Weather Conditions at Start of Survey

Temperature (°F): 60

Wind Speed (mph): 1 - 3 (Light Air; Smoke drifts)

Wind Direction: SW

Cloud Cover: Overcast (90-100%)

Visibility: Fair (0.62-10 miles; mist or light/moderate precipitation)

Precipitation: Other - Describe in notes

Weather Notes: Wildfire smoke haze



Field Data Sheet

Open Field Condition Observations

Corresponding Point ID(s): 28

Anthropogenic Disturbance/Management Practices: None notable

Primary Open Field Cover Type: Field Cropland (including hay, wheat, oats, etc.)

Estimated Grass Cover (%): 1-10%

Estimated Forb Cover (%): 90-100%

Estimated Woody Vegetation Cover (%): None

Estimated Bare Ground (%): 1-10%

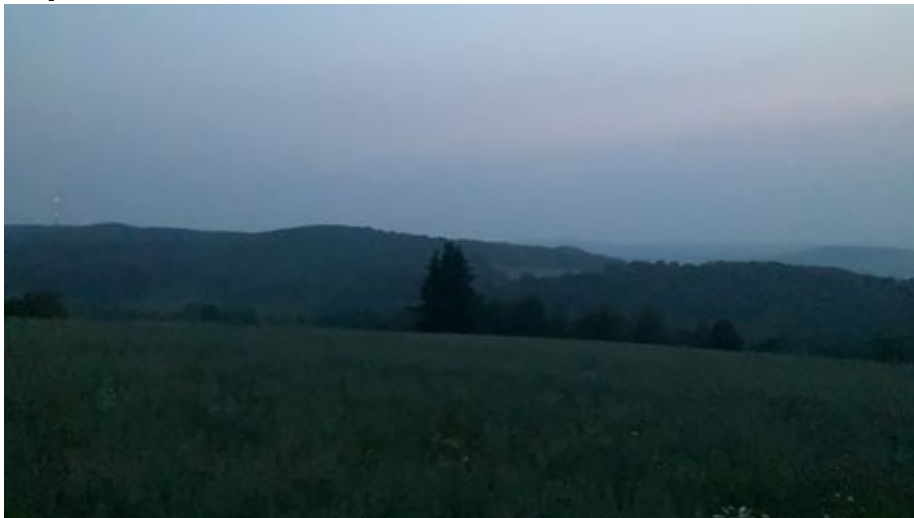
Estimated Litter Depth (inches): None

Average Vegetation Height (inches): 30-36

Dominant Plant Species (Common Names): Alfalfa, grass, daisy

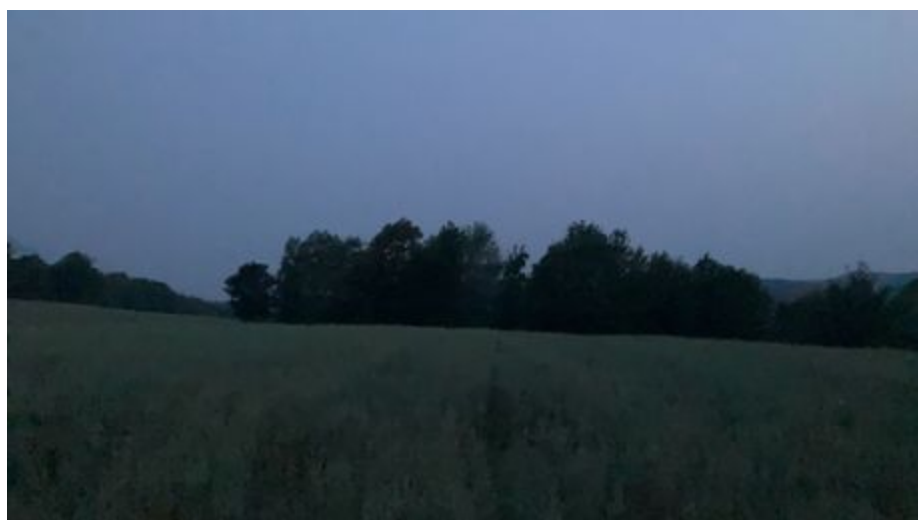
Invasive Plant Species (Common Names):

Representative Photo(s):





Field Data Sheet





Field Data Sheet

Notes :

Do you need to report observations of another open field?

Yes



Field Data Sheet

Corresponding Point ID(s): 27

Anthropogenic Disturbance/Management Practices: None notable

Primary Open Field Cover Type: Row Cropland (Active)

Estimated Grass Cover (%): 1-10%

Estimated Forb Cover (%): 90-100%

Estimated Woody Vegetation Cover (%): None

Estimated Bare Ground (%): None

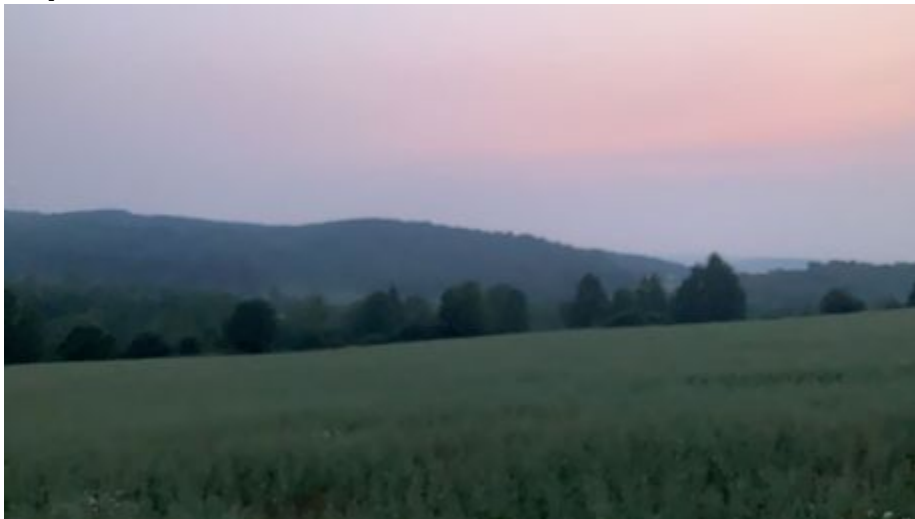
Estimated Litter Depth (inches): None

Average Vegetation Height (inches): 30-36

Dominant Plant Species (Common Names): Alfalfa, grass, daisy

Invasive Plant Species (Common Names):

Representative Photo(s):





Field Data Sheet





Field Data Sheet

Notes :

Do you need to report observations of another open field?

Yes



Field Data Sheet

Corresponding Point ID(s): 29

Anthropogenic Disturbance/Management Practices: None notable

Primary Open Field Cover Type: Row Cropland (Active)

Estimated Grass Cover (%): 1-10%

Estimated Forb Cover (%): 90-100%

Estimated Woody Vegetation Cover (%): None

Estimated Bare Ground (%): 1-10%

Estimated Litter Depth (inches): None

Average Vegetation Height (inches): 30-36

Dominant Plant Species (Common Names): Alfalfa, grass, clover, daisy

Invasive Plant Species (Common Names):

Representative Photo(s):





Field Data Sheet





Field Data Sheet

Notes :

Do you need to report observations of another open field?

Yes



Field Data Sheet

Corresponding Point ID(s): 33.3

Anthropogenic Disturbance/Management Practices: None notable

Primary Open Field Cover Type: Pastureland

Estimated Grass Cover (%): 50-90%

Estimated Forb Cover (%): 10-25%

Estimated Woody Vegetation Cover (%): None

Estimated Bare Ground (%): None

Estimated Litter Depth (inches): 0-1"

Average Vegetation Height (inches): 18-24

Dominant Plant Species (Common Names): Grass, daisy, clover, buttercup

Invasive Plant Species (Common Names):

Representative Photo(s):





Field Data Sheet





Field Data Sheet

Notes :

Do you need to report observations of another open field?

Yes



Field Data Sheet

Corresponding Point ID(s): 18 Alt

Anthropogenic Disturbance/Management Practices: ATV/Other Vehicle Noise

Primary Open Field Cover Type: Field Cropland (including hay, wheat, oats, etc.)

Estimated Grass Cover (%): 50-90%

Estimated Forb Cover (%): 1-10%

Estimated Woody Vegetation Cover (%): None

Estimated Bare Ground (%): 1-10%

Estimated Litter Depth (inches): None

Average Vegetation Height (inches): 48-54

Dominant Plant Species (Common Names): Corn, grass, daisy, clover, milkweed

Invasive Plant Species (Common Names):

Representative Photo(s):





Field Data Sheet





Field Data Sheet

Notes :

Alternate point chosen due to height of crop

Do you need to report observations of another open field?

Yes



Field Data Sheet

Corresponding Point ID(s): 20

Anthropogenic Disturbance/Management Practices: ATV/Other Vehicle Noise

Primary Open Field Cover Type: Row Cropland (Active)

Estimated Grass Cover (%): 1-10%

Estimated Forb Cover (%): 25-50%

Estimated Woody Vegetation Cover (%): None

Estimated Bare Ground (%): 50-90%

Estimated Litter Depth (inches): None

Average Vegetation Height (inches): 6-12

Dominant Plant Species (Common Names): Soybean, grass,

Invasive Plant Species (Common Names):

Representative Photo(s):





Field Data Sheet





Field Data Sheet

Notes :

Do you need to report observations of another open field?

Yes



Field Data Sheet

Corresponding Point ID(s): 21

Anthropogenic Disturbance/Management Practices: None notable

Primary Open Field Cover Type: Row Cropland (Active)

Estimated Grass Cover (%): 10-25%

Estimated Forb Cover (%): 25-50%

Estimated Woody Vegetation Cover (%): None

Estimated Bare Ground (%): 25-50%

Estimated Litter Depth (inches): 0-1"

Average Vegetation Height (inches): 6-12

Dominant Plant Species (Common Names): Soybean, grass, clover, vetch, buttercup,

Invasive Plant Species (Common Names):

Representative Photo(s):





Field Data Sheet





Field Data Sheet

Notes :

Do you need to report observations of another open field?

Yes



Field Data Sheet

Corresponding Point ID(s): 19

Anthropogenic Disturbance/Management Practices: ATV/Other Vehicle Noise

Primary Open Field Cover Type: Row Cropland (Active)

Estimated Grass Cover (%): 1-10%

Estimated Forb Cover (%): 50-90%

Estimated Woody Vegetation Cover (%): None

Estimated Bare Ground (%): 25-50%

Estimated Litter Depth (inches): None

Average Vegetation Height (inches): 6-12

Dominant Plant Species (Common Names): Soybean, grass

Invasive Plant Species (Common Names):

Representative Photo(s):





Field Data Sheet





Field Data Sheet

Notes :

Do you need to report observations of another open field?

Yes



Field Data Sheet

Corresponding Point ID(s): 24

Anthropogenic Disturbance/Management Practices: None notable

Primary Open Field Cover Type: Successional Old Field

Estimated Grass Cover (%): 25-50%

Estimated Forb Cover (%): 10-25%

Estimated Woody Vegetation Cover (%): 10-25%

Estimated Bare Ground (%): None

Estimated Litter Depth (inches): 0-1"

Average Vegetation Height (inches): 24-30

Dominant Plant Species (Common Names): Grass, goldenrod, dogwood, pine, milkweed, rubus spp, clover, vetch, larch,

Invasive Plant Species (Common Names):

Representative Photo(s):





Field Data Sheet





Field Data Sheet

Notes :

Do you need to report observations of another open field?

Yes



Field Data Sheet

Corresponding Point ID(s): 33

Anthropogenic Disturbance/Management Practices: None notable

Primary Open Field Cover Type: Field Cropland (including hay, wheat, oats, etc.)

Estimated Grass Cover (%): 50-90%

Estimated Forb Cover (%): 10-25%

Estimated Woody Vegetation Cover (%): None

Estimated Bare Ground (%): None

Estimated Litter Depth (inches): None

Average Vegetation Height (inches): 4-6

Dominant Plant Species (Common Names): Grass, clover, rubus spp, bedstraw, buttercup

Invasive Plant Species (Common Names):

Representative Photo(s):





Field Data Sheet





Field Data Sheet

Notes :

Do you need to report observations of another open field?

Yes



Field Data Sheet

Corresponding Point ID(s): 32

Anthropogenic Disturbance/Management Practices: ATV/Other Vehicle Noise

Primary Open Field Cover Type: Field Cropland (including hay, wheat, oats, etc.)

Estimated Grass Cover (%): 50-90%

Estimated Forb Cover (%): 10-25%

Estimated Woody Vegetation Cover (%): None

Estimated Bare Ground (%): None

Estimated Litter Depth (inches): 0-1"

Average Vegetation Height (inches): 6-12

Dominant Plant Species (Common Names): Grass, clover, bedstraw, dandelion, rubus spp,

Invasive Plant Species (Common Names):

Representative Photo(s):





Field Data Sheet





Field Data Sheet

Notes :

Do you need to report observations of another open field?

Yes



Field Data Sheet

Corresponding Point ID(s): 31

Anthropogenic Disturbance/Management Practices: None notable

Primary Open Field Cover Type: Field Cropland (including hay, wheat, oats, etc.)

Estimated Grass Cover (%): 50-90%

Estimated Forb Cover (%): 10-25%

Estimated Woody Vegetation Cover (%): None

Estimated Bare Ground (%): None

Estimated Litter Depth (inches): 0-1"

Average Vegetation Height (inches): 6-12

Dominant Plant Species (Common Names): Grass, clover, bedst, wild thyme, buttercup, daisy,

Invasive Plant Species (Common Names):

Representative Photo(s):





Field Data Sheet





Field Data Sheet

Notes :

Do you need to report observations of another open field?

Yes



Field Data Sheet

Corresponding Point ID(s): 30

Anthropogenic Disturbance/Management Practices: Farm Equipment In Use

Primary Open Field Cover Type: Field Cropland (including hay, wheat, oats, etc.)

Estimated Grass Cover (%): 50-90%

Estimated Forb Cover (%): 10-25%

Estimated Woody Vegetation Cover (%): None

Estimated Bare Ground (%): None

Estimated Litter Depth (inches): 0-1"

Average Vegetation Height (inches): 6-12

Dominant Plant Species (Common Names): Grass, clover, bedstraw, rubus spp, dandelion,

Invasive Plant Species (Common Names):

Representative Photo(s):





Field Data Sheet





Field Data Sheet

Notes :

Do you need to report observations of another open field?

Yes



Field Data Sheet

Corresponding Point ID(s): 34

Anthropogenic Disturbance/Management Practices: Farm Equipment In Use

Primary Open Field Cover Type: Row Cropland (Active)

Estimated Grass Cover (%): 50-90%

Estimated Forb Cover (%): 10-25%

Estimated Woody Vegetation Cover (%): None

Estimated Bare Ground (%): None

Estimated Litter Depth (inches): 1-3"

Average Vegetation Height (inches): 42-48

Dominant Plant Species (Common Names): Corn, grass, daisy, buttercup, clover, alfalfa, milkweed, vetch,

Invasive Plant Species (Common Names): Teasel,

Representative Photo(s):





Field Data Sheet





Field Data Sheet

Notes :

Do you need to report observations of another open field?

Yes



Field Data Sheet

Corresponding Point ID(s): 35.1

Anthropogenic Disturbance/Management Practices: None notable

Primary Open Field Cover Type: Field Cropland (including hay, wheat, oats, etc.)

Estimated Grass Cover (%): 50-90%

Estimated Forb Cover (%): 10-25%

Estimated Woody Vegetation Cover (%): None

Estimated Bare Ground (%): None

Estimated Litter Depth (inches): 0-1"

Average Vegetation Height (inches): 6-12

Dominant Plant Species (Common Names): Grass, clover, bedstraw,

Invasive Plant Species (Common Names):

Representative Photo(s):





Field Data Sheet





Field Data Sheet

Notes :

Do you need to report observations of another open field?

Yes



Field Data Sheet

Corresponding Point ID(s): 35

Anthropogenic Disturbance/Management Practices: None notable

Primary Open Field Cover Type: Field Cropland (including hay, wheat, oats, etc.)

Estimated Grass Cover (%): 50-90%

Estimated Forb Cover (%): 10-25%

Estimated Woody Vegetation Cover (%): None

Estimated Bare Ground (%): None

Estimated Litter Depth (inches): 0-1"

Average Vegetation Height (inches): 6-12

Dominant Plant Species (Common Names): Grass, clover, bedstraw, rubus spp, buttercup, daisy,

Invasive Plant Species (Common Names):

Representative Photo(s):





Field Data Sheet





Field Data Sheet

Notes :

Do you need to report observations of another open field?

No

This figure has been redacted from this publicly available document because it contains protected/confidential information regarding the proposed facility location and/or the detailed locations of NYS threatened or endangered species.

This appendix has been redacted from this publicly available document because it contains protected/confidential information regarding species listed as endangered, threatened, or special concern in New York.



Field Data Sheet

Breeding Bird Survey

Submitted By: bsmith@edrdpc.com

Submitted Time: July 19, 2023 10:17 AM

Survey Information

Project Name: Hoffman Falls

Survey Date: July 19, 2023

Surveyor Name: Brooke Smith

Points Surveyed: 36-50.1

Survey Start Time: 05:15

Survey End Time: 10:10

Weather Conditions at Start of Survey

Temperature (°F): 58

Wind Speed (mph): 1 - 3 (Light Air; Smoke drifts)

Wind Direction: W

Cloud Cover: Overcast (90-100%)

Visibility: Good (10+ miles; clear)

Precipitation: None (Clear)

Weather Notes:



Field Data Sheet

Open Field Condition Observations

Corresponding Point ID(s): 40

Anthropogenic Disturbance/Management Practices: Traffic Noise

Primary Open Field Cover Type: Field Cropland (including hay, wheat, oats, etc.)

Estimated Grass Cover (%): 10-25%

Estimated Forb Cover (%): 50-90%

Estimated Woody Vegetation Cover (%): None

Estimated Bare Ground (%): None

Estimated Litter Depth (inches): None

Average Vegetation Height (inches): 2-4

Dominant Plant Species (Common Names): Grass, alfalfa

Invasive Plant Species (Common Names):

Representative Photo(s):





Field Data Sheet





Field Data Sheet

Notes :

Do you need to report observations of another open field?

Yes



Field Data Sheet

Corresponding Point ID(s): 41

Anthropogenic Disturbance/Management Practices: None notable

Primary Open Field Cover Type: Row Cropland (Active)

Estimated Grass Cover (%): 10-25%

Estimated Forb Cover (%): 90-100%

Estimated Woody Vegetation Cover (%): None

Estimated Bare Ground (%): None

Estimated Litter Depth (inches): None

Average Vegetation Height (inches): 42-48

Dominant Plant Species (Common Names): Corn, grass, phlox

Invasive Plant Species (Common Names):

Representative Photo(s):





Field Data Sheet





Field Data Sheet

Notes :

Do you need to report observations of another open field?

Yes



Field Data Sheet

Corresponding Point ID(s): 39

Anthropogenic Disturbance/Management Practices: None notable

Primary Open Field Cover Type: Field Cropland (including hay, wheat, oats, etc.)

Estimated Grass Cover (%): 90-100%

Estimated Forb Cover (%): None

Estimated Woody Vegetation Cover (%): None

Estimated Bare Ground (%): None

Estimated Litter Depth (inches): None

Average Vegetation Height (inches): 6-12

Dominant Plant Species (Common Names): Grass

Invasive Plant Species (Common Names):

Representative Photo(s):





Field Data Sheet





Field Data Sheet

Notes :

Do you need to report observations of another open field?

Yes



Field Data Sheet

Corresponding Point ID(s): 38 (alt)

Anthropogenic Disturbance/Management Practices: None notable

Primary Open Field Cover Type: Row Cropland (Active)

Estimated Grass Cover (%): None

Estimated Forb Cover (%): 90-100%

Estimated Woody Vegetation Cover (%): None

Estimated Bare Ground (%): None

Estimated Litter Depth (inches): None

Average Vegetation Height (inches): 60+

Dominant Plant Species (Common Names): Corn

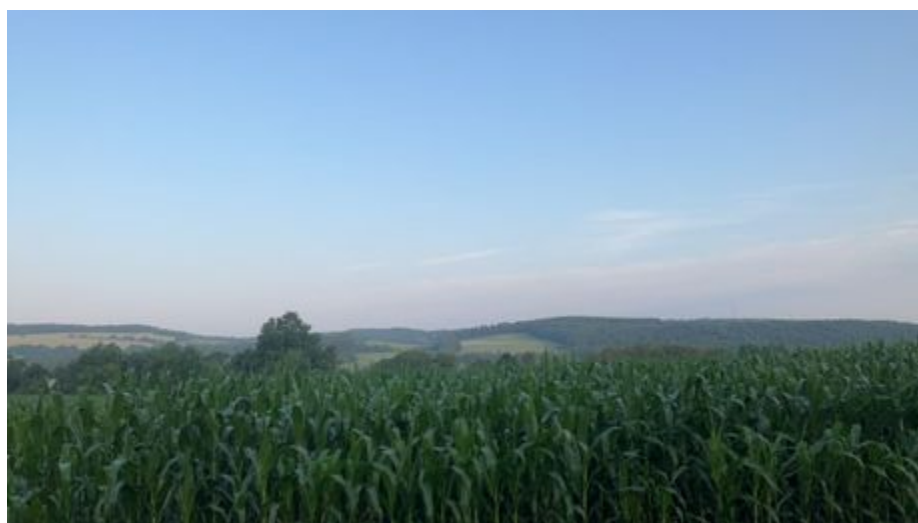
Invasive Plant Species (Common Names):

Representative Photo(s):





Field Data Sheet





Field Data Sheet

Notes :

Do you need to report observations of another open field?

Yes



Field Data Sheet

Corresponding Point ID(s): 36

Anthropogenic Disturbance/Management Practices: None notable

Primary Open Field Cover Type: Field Cropland (including hay, wheat, oats, etc.)

Estimated Grass Cover (%): 90-100%

Estimated Forb Cover (%): None

Estimated Woody Vegetation Cover (%): None

Estimated Bare Ground (%): None

Estimated Litter Depth (inches): None

Average Vegetation Height (inches): 4-6

Dominant Plant Species (Common Names): Grass

Invasive Plant Species (Common Names):

Representative Photo(s):





Field Data Sheet





Field Data Sheet

Notes :

Do you need to report observations of another open field?

Yes



Field Data Sheet

Corresponding Point ID(s): 37 (alt)

Anthropogenic Disturbance/Management Practices: None notable

Primary Open Field Cover Type: Row Cropland (Active)

Estimated Grass Cover (%): None

Estimated Forb Cover (%): 90-100%

Estimated Woody Vegetation Cover (%): None

Estimated Bare Ground (%): None

Estimated Litter Depth (inches): None

Average Vegetation Height (inches): 60+

Dominant Plant Species (Common Names): Corn

Invasive Plant Species (Common Names):

Representative Photo(s):





Field Data Sheet





Field Data Sheet

Notes :

Do you need to report observations of another open field?

Yes



Field Data Sheet

Corresponding Point ID(s): 49 (alt

Anthropogenic Disturbance/Management Practices: None notable

Primary Open Field Cover Type: Row Cropland (Active)

Estimated Grass Cover (%): None

Estimated Forb Cover (%): 90-100%

Estimated Woody Vegetation Cover (%): None

Estimated Bare Ground (%): None

Estimated Litter Depth (inches): None

Average Vegetation Height (inches): 60+

Dominant Plant Species (Common Names): Corn

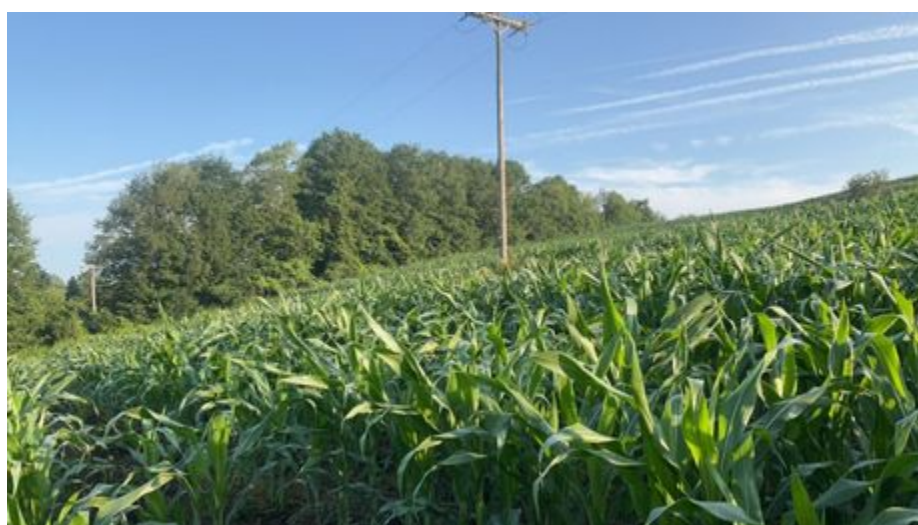
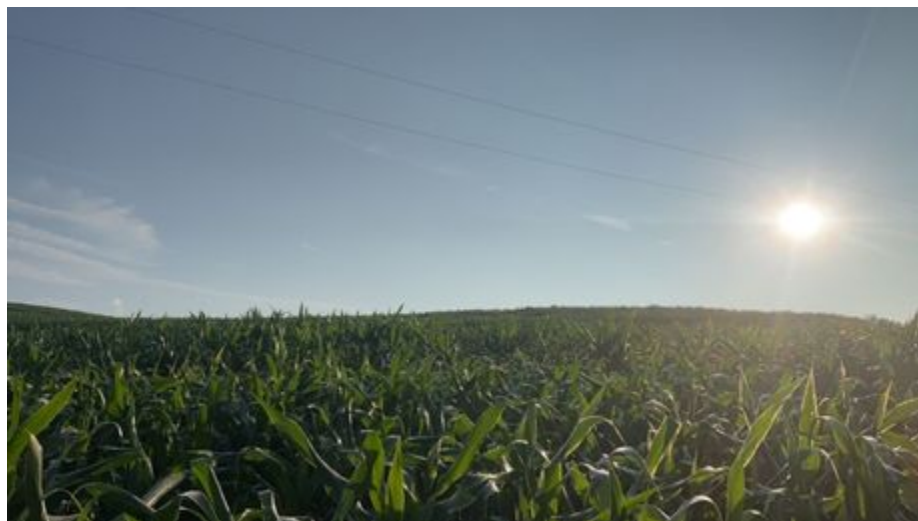
Invasive Plant Species (Common Names):

Representative Photo(s):





Field Data Sheet





Field Data Sheet

Notes :

Do you need to report observations of another open field?

Yes



Field Data Sheet

Corresponding Point ID(s): 47

Anthropogenic Disturbance/Management Practices: None notable

Primary Open Field Cover Type: Field Cropland (including hay, wheat, oats, etc.)

Estimated Grass Cover (%): 90-100%

Estimated Forb Cover (%): None

Estimated Woody Vegetation Cover (%): None

Estimated Bare Ground (%): None

Estimated Litter Depth (inches): None

Average Vegetation Height (inches): 24-30

Dominant Plant Species (Common Names): Grass

Invasive Plant Species (Common Names):

Representative Photo(s):





Field Data Sheet





Field Data Sheet

Notes :

Do you need to report observations of another open field?

Yes



Field Data Sheet

Corresponding Point ID(s): 48 (alt)

Anthropogenic Disturbance/Management Practices: None notable

Primary Open Field Cover Type: Row Cropland (Active)

Estimated Grass Cover (%): None

Estimated Forb Cover (%): 90-100%

Estimated Woody Vegetation Cover (%): None

Estimated Bare Ground (%): None

Estimated Litter Depth (inches): None

Average Vegetation Height (inches): 54-60

Dominant Plant Species (Common Names): Corn

Invasive Plant Species (Common Names):

Representative Photo(s):





Field Data Sheet





Field Data Sheet

Notes :

Do you need to report observations of another open field?

Yes



Field Data Sheet

Corresponding Point ID(s): 45

Anthropogenic Disturbance/Management Practices: None notable

Primary Open Field Cover Type: Row Cropland (Active)

Estimated Grass Cover (%): None

Estimated Forb Cover (%): 90-100%

Estimated Woody Vegetation Cover (%): None

Estimated Bare Ground (%): None

Estimated Litter Depth (inches): None

Average Vegetation Height (inches): 54-60

Dominant Plant Species (Common Names): Corn

Invasive Plant Species (Common Names):

Representative Photo(s):





Field Data Sheet





Field Data Sheet

Notes :

Do you need to report observations of another open field?

Yes



Field Data Sheet

Corresponding Point ID(s): 44

Anthropogenic Disturbance/Management Practices: None notable

Primary Open Field Cover Type: Field Cropland (including hay, wheat, oats, etc.)

Estimated Grass Cover (%): 90-100%

Estimated Forb Cover (%): None

Estimated Woody Vegetation Cover (%): None

Estimated Bare Ground (%): None

Estimated Litter Depth (inches): None

Average Vegetation Height (inches): 12-18

Dominant Plant Species (Common Names): Grass

Invasive Plant Species (Common Names):

Representative Photo(s):





Field Data Sheet





Field Data Sheet

Notes :

Do you need to report observations of another open field?

Yes



Field Data Sheet

Corresponding Point ID(s): 43

Anthropogenic Disturbance/Management Practices: None notable

Primary Open Field Cover Type: Field Cropland (including hay, wheat, oats, etc.)

Estimated Grass Cover (%): 90-100%

Estimated Forb Cover (%): None

Estimated Woody Vegetation Cover (%): None

Estimated Bare Ground (%): None

Estimated Litter Depth (inches): None

Average Vegetation Height (inches): 12-18

Dominant Plant Species (Common Names): Grass

Invasive Plant Species (Common Names):

Representative Photo(s):





Field Data Sheet





Field Data Sheet

Notes :

Do you need to report observations of another open field?

Yes



Field Data Sheet

Corresponding Point ID(s): 42

Anthropogenic Disturbance/Management Practices: None notable

Primary Open Field Cover Type: Field Cropland (including hay, wheat, oats, etc.)

Estimated Grass Cover (%): 90-100%

Estimated Forb Cover (%): None

Estimated Woody Vegetation Cover (%): None

Estimated Bare Ground (%): None

Estimated Litter Depth (inches): None

Average Vegetation Height (inches): 12-18

Dominant Plant Species (Common Names): Grass

Invasive Plant Species (Common Names):

Representative Photo(s):





Field Data Sheet





Field Data Sheet

Notes :

Do you need to report observations of another open field?

Yes



Field Data Sheet

Corresponding Point ID(s): 46

Anthropogenic Disturbance/Management Practices: None notable

Primary Open Field Cover Type: Field Cropland (including hay, wheat, oats, etc.)

Estimated Grass Cover (%): None

Estimated Forb Cover (%): 90-100%

Estimated Woody Vegetation Cover (%): None

Estimated Bare Ground (%): None

Estimated Litter Depth (inches): None

Average Vegetation Height (inches): 30-36

Dominant Plant Species (Common Names): Clover

Invasive Plant Species (Common Names):

Representative Photo(s):





Field Data Sheet





Field Data Sheet

Notes :

Do you need to report observations of another open field?

Yes



Field Data Sheet

Corresponding Point ID(s): 50.1

Anthropogenic Disturbance/Management Practices: None notable

Primary Open Field Cover Type: Field Cropland (including hay, wheat, oats, etc.)

Estimated Grass Cover (%): 25-50%

Estimated Forb Cover (%): 25-50%

Estimated Woody Vegetation Cover (%): None

Estimated Bare Ground (%): None

Estimated Litter Depth (inches): None

Average Vegetation Height (inches): 36-42

Dominant Plant Species (Common Names): Grass and clover

Invasive Plant Species (Common Names):

Representative Photo(s):





Field Data Sheet





Field Data Sheet

Notes :

Do you need to report observations of another open field?

Yes



Field Data Sheet

Corresponding Point ID(s): 50

Anthropogenic Disturbance/Management Practices: None notable

Primary Open Field Cover Type: Pastureland

Estimated Grass Cover (%): 90-100%

Estimated Forb Cover (%): None

Estimated Woody Vegetation Cover (%): None

Estimated Bare Ground (%): None

Estimated Litter Depth (inches): None

Average Vegetation Height (inches): 6-12

Dominant Plant Species (Common Names): Grass

Invasive Plant Species (Common Names):

Representative Photo(s):





Field Data Sheet





Field Data Sheet

Notes :

Do you need to report observations of another open field?

No



Field Data Sheet

Weather Conditions at End of Survey

Temperature (°F): 70

Wind Speed (mph): 1 – 3 (Light Air; Smoke drifts)

Wind Direction: NNW

Cloud Cover: None (Clear)

Visibility: Good (10+ miles; clear)

Precipitation: None (Clear)

Weather Notes:

Were there any notable weather events/changes during the survey? No

Bird Observation Summary

Were any Endangered/Threatened Species observed?

No

Were any Species of Special Concern observed?

No

Were probable, possible, or confirmed breeding behaviors observed for any Listed Species (Endangered/Threatened/Special Concern)?

No

Were there additional photos documenting birds observed, habitat conditions, and/or other features of interest?

No

Additional Photo(s):

Were any alternate point count survey locations used due to access or visual constraints?

Yes

Alternate Point Count Survey Locations: 37, 38, 48, 49



Field Data Sheet

**Incidental bird species observed outside of timed point count surveys
(Alpha Codes or Common Names):**

Overall Survey Notes:



Field Data Sheet

Breeding Bird Survey

Submitted By: fsimeone@edrdpc.com

Submitted Time: July 19, 2023 11:03 AM

Survey Information

Project Name: Hoffman Falls

Survey Date: July 19, 2023

Surveyor Name: Frank Simeone

Points Surveyed: 1 alt, 2 alt, 3 alt, 4 alt, 5 alt, 6, 7 alt, 7.1 alt, 8 alt, 9 alt, 10 alt, 11 alt, 12, 13 alt, 14 alt, 15.1, 16 alt, 16.1, 16.2 alt, 17 alt,

Survey Start Time: 05:08

Survey End Time: 09:55

Weather Conditions at Start of Survey

Temperature (°F): 59

Wind Speed (mph): 0 – 1 (Calm; Smoke rises vertically)

Wind Direction: W

Cloud Cover: Partly Cloudy (25% - 50%)

Visibility: Fair (0.62-10 miles; mist or light/moderate precipitation)

Precipitation: Other - Describe in notes

Weather Notes: Slight haze due to wildfire smoke



Field Data Sheet

Open Field Condition Observations

Corresponding Point ID(s): 11 Alt

Anthropogenic Disturbance/Management Practices: None notable

Primary Open Field Cover Type: Row Cropland (Active)

Estimated Grass Cover (%): 90-100%

Estimated Forb Cover (%): None

Estimated Woody Vegetation Cover (%): None

Estimated Bare Ground (%): None

Estimated Litter Depth (inches): None

Average Vegetation Height (inches): 60+

Dominant Plant Species (Common Names): Corn

Invasive Plant Species (Common Names):

Representative Photo(s):





Field Data Sheet





Field Data Sheet

Notes :

11 Alt surveyed due to height of corn and to avoid damaging crop.

Do you need to report observations of another open field?

Yes



Field Data Sheet

Corresponding Point ID(s): 1 Alt

Anthropogenic Disturbance/Management Practices: None notable

Primary Open Field Cover Type: Row Cropland (Active)

Estimated Grass Cover (%): 90-100%

Estimated Forb Cover (%): None

Estimated Woody Vegetation Cover (%): None

Estimated Bare Ground (%): None

Estimated Litter Depth (inches): None

Average Vegetation Height (inches): 54-60

Dominant Plant Species (Common Names): Corn

Invasive Plant Species (Common Names):

Representative Photo(s):





Field Data Sheet





Field Data Sheet

Notes :

1 alternate surveyed due to corn height and to avoid crop damage.

Do you need to report observations of another open field?

Yes



Field Data Sheet

Corresponding Point ID(s): 2 Alt

Anthropogenic Disturbance/Management Practices: ATV/Other Vehicle Noise

Primary Open Field Cover Type: Row Cropland (Active)

Estimated Grass Cover (%): 90-100%

Estimated Forb Cover (%): None

Estimated Woody Vegetation Cover (%): None

Estimated Bare Ground (%): None

Estimated Litter Depth (inches): None

Average Vegetation Height (inches): 60+

Dominant Plant Species (Common Names): Corn

Invasive Plant Species (Common Names):

Representative Photo(s):





Field Data Sheet





Field Data Sheet

Notes :

2 alt surveyed due to corn height and to avoid damaging crop.

Do you need to report observations of another open field?

Yes



Field Data Sheet

Corresponding Point ID(s): 7.1 Alt

Anthropogenic Disturbance/Management Practices: ATV/Other Vehicle Noise

Primary Open Field Cover Type: Row Cropland (Active)

Estimated Grass Cover (%): 90-100%

Estimated Forb Cover (%): None

Estimated Woody Vegetation Cover (%): None

Estimated Bare Ground (%): None

Estimated Litter Depth (inches): None

Average Vegetation Height (inches): 60+

Dominant Plant Species (Common Names): Corn

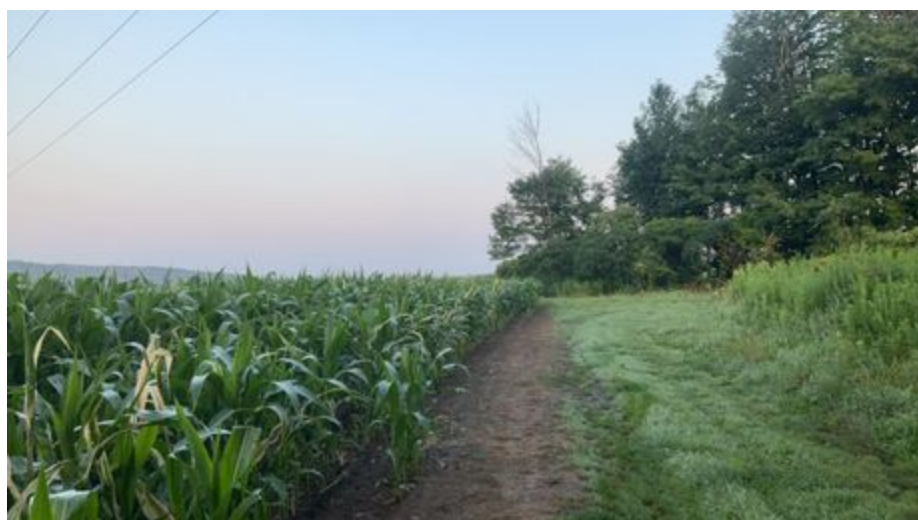
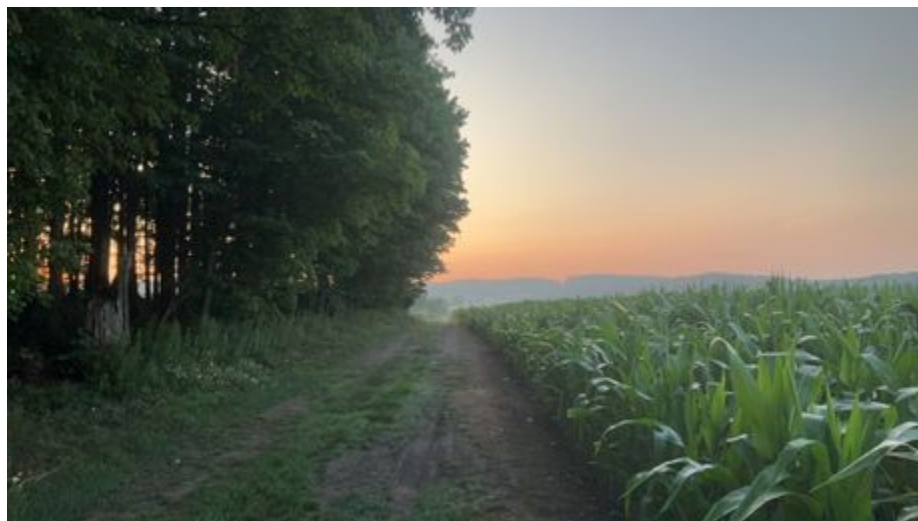
Invasive Plant Species (Common Names):

Representative Photo(s):





Field Data Sheet





Field Data Sheet

Notes :

7.1 alt surveyed due to corn height and to avoid damaging crop.

Do you need to report observations of another open field?

Yes



Field Data Sheet

Corresponding Point ID(s): 7 Alt

Anthropogenic Disturbance/Management Practices: ATV/Other Vehicle Noise

Primary Open Field Cover Type: Row Cropland (Active)

Estimated Grass Cover (%): 90-100%

Estimated Forb Cover (%): None

Estimated Woody Vegetation Cover (%): None

Estimated Bare Ground (%): None

Estimated Litter Depth (inches): None

Average Vegetation Height (inches): 60+

Dominant Plant Species (Common Names): Corn

Invasive Plant Species (Common Names):

Representative Photo(s):





Field Data Sheet





Field Data Sheet

Notes :

7 alt surveyed due to corn height and to avoid damaging crop.

Do you need to report observations of another open field?

Yes



Field Data Sheet

Corresponding Point ID(s): 8 Alt

Anthropogenic Disturbance/Management Practices: ATV/Other Vehicle Noise

Primary Open Field Cover Type: Row Cropland (Active)

Estimated Grass Cover (%): 90-100%

Estimated Forb Cover (%): None

Estimated Woody Vegetation Cover (%): None

Estimated Bare Ground (%): None

Estimated Litter Depth (inches): None

Average Vegetation Height (inches): 60+

Dominant Plant Species (Common Names): Corn

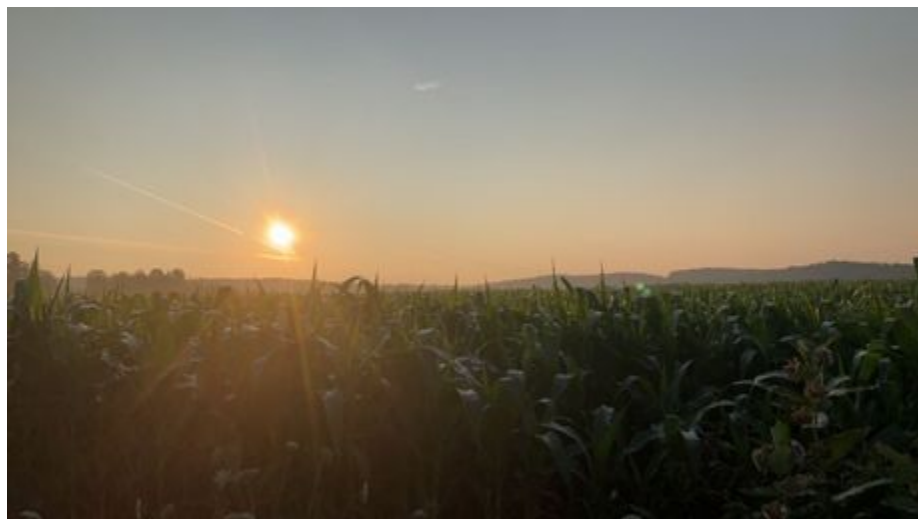
Invasive Plant Species (Common Names):

Representative Photo(s):





Field Data Sheet





Field Data Sheet

Notes :

8 Alt surveyed due to corn height and to avoid damaging crop.

Do you need to report observations of another open field?

Yes



Field Data Sheet

Corresponding Point ID(s): 9 Alt

Anthropogenic Disturbance/Management Practices: ATV/Other Vehicle Noise

Primary Open Field Cover Type: Row Cropland (Active)

Estimated Grass Cover (%): 90-100%

Estimated Forb Cover (%): None

Estimated Woody Vegetation Cover (%): None

Estimated Bare Ground (%): None

Estimated Litter Depth (inches): None

Average Vegetation Height (inches): 60+

Dominant Plant Species (Common Names): Corn

Invasive Plant Species (Common Names):

Representative Photo(s):





Field Data Sheet





Field Data Sheet

Notes :

9 Alt surveyed due to corn height and to avoid damaging crop.

Do you need to report observations of another open field?

Yes



Field Data Sheet

Corresponding Point ID(s): 10 Alt

Anthropogenic Disturbance/Management Practices: ATV/Other Vehicle Noise

Primary Open Field Cover Type: Row Cropland (Active)

Estimated Grass Cover (%): 90-100%

Estimated Forb Cover (%): None

Estimated Woody Vegetation Cover (%): None

Estimated Bare Ground (%): None

Estimated Litter Depth (inches): None

Average Vegetation Height (inches): 60+

Dominant Plant Species (Common Names): Corn

Invasive Plant Species (Common Names):

Representative Photo(s):





Field Data Sheet





Field Data Sheet

Notes :

10 Alt surveyed due to corn height and to avoid damaging crop.

Do you need to report observations of another open field?

Yes



Field Data Sheet

Corresponding Point ID(s): 12

Anthropogenic Disturbance/Management Practices: ATV/Other Vehicle Noise

Primary Open Field Cover Type: Field Cropland (including hay, wheat, oats, etc.)

Estimated Grass Cover (%): 50-90%

Estimated Forb Cover (%): 10-25%

Estimated Woody Vegetation Cover (%): None

Estimated Bare Ground (%): None

Estimated Litter Depth (inches): 0-1"

Average Vegetation Height (inches): 6-12

Dominant Plant Species (Common Names): Grass, clover, dandelion,

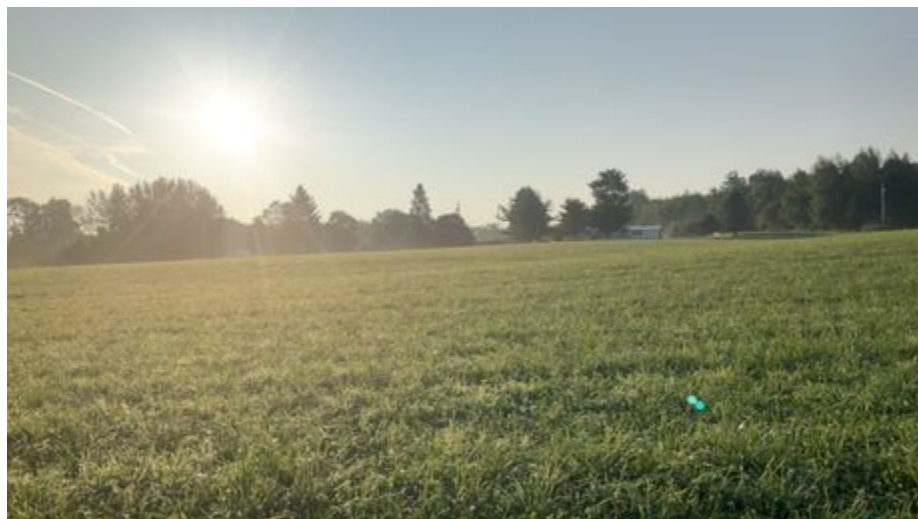
Invasive Plant Species (Common Names):

Representative Photo(s):





Field Data Sheet





Field Data Sheet

Notes :

Do you need to report observations of another open field?

Yes



Field Data Sheet

Corresponding Point ID(s): 13 Alt

Anthropogenic Disturbance/Management Practices: None notable

Primary Open Field Cover Type: Row Cropland (Active)

Estimated Grass Cover (%): 90-100%

Estimated Forb Cover (%): None

Estimated Woody Vegetation Cover (%): None

Estimated Bare Ground (%): None

Estimated Litter Depth (inches): None

Average Vegetation Height (inches): 54-60

Dominant Plant Species (Common Names): Corn

Invasive Plant Species (Common Names):

Representative Photo(s):





Field Data Sheet





Field Data Sheet

Notes :

13 Alt surveyed due to corn height and to avoid damaging crop.

Do you need to report observations of another open field?

Yes



Field Data Sheet

Corresponding Point ID(s): 3 Alt

Anthropogenic Disturbance/Management Practices: None notable

Primary Open Field Cover Type: Row Cropland (Active)

Estimated Grass Cover (%): 90-100%

Estimated Forb Cover (%): None

Estimated Woody Vegetation Cover (%): None

Estimated Bare Ground (%): None

Estimated Litter Depth (inches): None

Average Vegetation Height (inches): 54-60

Dominant Plant Species (Common Names): Corn

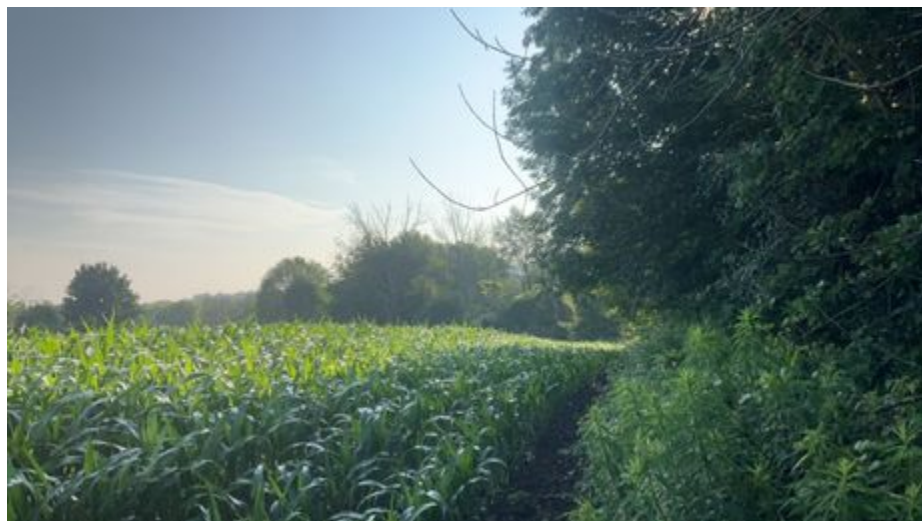
Invasive Plant Species (Common Names):

Representative Photo(s):





Field Data Sheet





Field Data Sheet

Notes :

3 Alt surveyed due to corn height and to avoid damaging crop.

Do you need to report observations of another open field?

Yes



Field Data Sheet

Corresponding Point ID(s): 4 Alt

Anthropogenic Disturbance/Management Practices: ATV/Other Vehicle Noise

Primary Open Field Cover Type: Row Cropland (Active)

Estimated Grass Cover (%): 90-100%

Estimated Forb Cover (%): None

Estimated Woody Vegetation Cover (%): None

Estimated Bare Ground (%): None

Estimated Litter Depth (inches): None

Average Vegetation Height (inches): 54-60

Dominant Plant Species (Common Names): Corn

Invasive Plant Species (Common Names):

Representative Photo(s):





Field Data Sheet





Field Data Sheet

Notes :

4 alt surveyed due to corn height and to avoid damaging crop.

Do you need to report observations of another open field?

Yes



Field Data Sheet

Corresponding Point ID(s): 6

Anthropogenic Disturbance/Management Practices: ATV/Other Vehicle Noise

Primary Open Field Cover Type: Field Cropland (including hay, wheat, oats, etc.)

Estimated Grass Cover (%): 50-90%

Estimated Forb Cover (%): 10-25%

Estimated Woody Vegetation Cover (%): None

Estimated Bare Ground (%): None

Estimated Litter Depth (inches): 0-1"

Average Vegetation Height (inches): 12-18

Dominant Plant Species (Common Names): Clover, grass, dandelion,

Invasive Plant Species (Common Names):

Representative Photo(s):





Field Data Sheet





Field Data Sheet

Notes :

Do you need to report observations of another open field?

Yes



Field Data Sheet

Corresponding Point ID(s): 5 Alt

Anthropogenic Disturbance/Management Practices: ATV/Other Vehicle Noise

Primary Open Field Cover Type: Row Cropland (Active)

Estimated Grass Cover (%): 90-100%

Estimated Forb Cover (%): None

Estimated Woody Vegetation Cover (%): None

Estimated Bare Ground (%): None

Estimated Litter Depth (inches): None

Average Vegetation Height (inches): 60+

Dominant Plant Species (Common Names): Corn

Invasive Plant Species (Common Names):

Representative Photo(s):





Field Data Sheet





Field Data Sheet

Notes :

5 Alt surveyed due to corn height and to avoid damaging crop.

Do you need to report observations of another open field?

Yes



Field Data Sheet

Corresponding Point ID(s): 15.1

Anthropogenic Disturbance/Management Practices: ATV/Other Vehicle Noise

Primary Open Field Cover Type: Row Cropland (Active)

Estimated Grass Cover (%): 50-90%

Estimated Forb Cover (%): 10-25%

Estimated Woody Vegetation Cover (%): 1-10%

Estimated Bare Ground (%): None

Estimated Litter Depth (inches): 0-1"

Average Vegetation Height (inches): 60+

Dominant Plant Species (Common Names): Corn, grass, buttercup, milkweed, oak, thistle

Invasive Plant Species (Common Names):

Representative Photo(s):





Field Data Sheet





Field Data Sheet

Notes :

Do you need to report observations of another open field?

Yes



Field Data Sheet

Corresponding Point ID(s): 16 Alt

Anthropogenic Disturbance/Management Practices: None notable

Primary Open Field Cover Type: Row Cropland (Active)

Estimated Grass Cover (%): 90-100%

Estimated Forb Cover (%): None

Estimated Woody Vegetation Cover (%): None

Estimated Bare Ground (%): None

Estimated Litter Depth (inches): None

Average Vegetation Height (inches): 60+

Dominant Plant Species (Common Names): Corn

Invasive Plant Species (Common Names):

Representative Photo(s):





Field Data Sheet





Field Data Sheet

Notes :

16 Alt surveyed due to corn height and to avoid damaging crop.

Do you need to report observations of another open field?

Yes



Field Data Sheet

Corresponding Point ID(s): 17 Alt

Anthropogenic Disturbance/Management Practices: None notable

Primary Open Field Cover Type: Row Cropland (Active)

Estimated Grass Cover (%): 90-100%

Estimated Forb Cover (%): None

Estimated Woody Vegetation Cover (%): None

Estimated Bare Ground (%): None

Estimated Litter Depth (inches): None

Average Vegetation Height (inches): 60+

Dominant Plant Species (Common Names): Corn

Invasive Plant Species (Common Names):

Representative Photo(s):





Field Data Sheet





Field Data Sheet

Notes :

17 Alt surveyed due to corn height and to avoid damaging crop.

Do you need to report observations of another open field?

Yes



Field Data Sheet

Corresponding Point ID(s): 16.2 Alt

Anthropogenic Disturbance/Management Practices: ATV/Other Vehicle Noise

Primary Open Field Cover Type: Row Cropland (Active)

Estimated Grass Cover (%): 90-100%

Estimated Forb Cover (%): None

Estimated Woody Vegetation Cover (%): None

Estimated Bare Ground (%): None

Estimated Litter Depth (inches): None

Average Vegetation Height (inches): 60+

Dominant Plant Species (Common Names): Corn

Invasive Plant Species (Common Names):

Representative Photo(s):





Field Data Sheet





Field Data Sheet

Notes :

16.2 Alt surveyed due to corn height and to avoid damaging crop.

Do you need to report observations of another open field?

Yes



Field Data Sheet

Corresponding Point ID(s): 16.1

Anthropogenic Disturbance/Management Practices: Construction Noise

Primary Open Field Cover Type: Pastureland

Estimated Grass Cover (%): 50-90%

Estimated Forb Cover (%): 25-50%

Estimated Woody Vegetation Cover (%): None

Estimated Bare Ground (%): None

Estimated Litter Depth (inches): 1-3"

Average Vegetation Height (inches): 24-30

Dominant Plant Species (Common Names): Grass, clover, bedstraw, buttercup, daisy, thistle,

Invasive Plant Species (Common Names):

Representative Photo(s):





Field Data Sheet





Field Data Sheet

Notes :

Do you need to report observations of another open field?

Yes



Field Data Sheet

Corresponding Point ID(s): 14 Alt

Anthropogenic Disturbance/Management Practices: ATV/Other Vehicle Noise

Primary Open Field Cover Type: Row Cropland (Active)

Estimated Grass Cover (%): 90-100%

Estimated Forb Cover (%): None

Estimated Woody Vegetation Cover (%): None

Estimated Bare Ground (%): None

Estimated Litter Depth (inches): None

Average Vegetation Height (inches): 60+

Dominant Plant Species (Common Names): Corn

Invasive Plant Species (Common Names):

Representative Photo(s):





Field Data Sheet





Field Data Sheet

Notes :

14 Alt surveyed due to corn height and to avoid damaging crop.

Do you need to report observations of another open field?

No



Field Data Sheet

Weather Conditions at End of Survey

Temperature (°F): 70

Wind Speed (mph): 1 - 3 (Light Air; Smoke drifts)

Wind Direction: NNW

Cloud Cover: Mostly Clear (10-25%)

Visibility: Good (10+ miles; clear)

Precipitation: None (Clear)

Weather Notes:

Were there any notable weather events/changes during the survey? Yes

Bird Observation Summary

Were any Endangered/Threatened Species observed?

No

Were any Species of Special Concern observed?

No

Were probable, possible, or confirmed breeding behaviors observed for any Listed Species (Endangered/Threatened/Special Concern)?

No

Were there additional photos documenting birds observed, habitat conditions, and/or other features of interest?

No

Additional Photo(s):

Were any alternate point count survey locations used due to access or visual constraints?

Yes



Field Data Sheet

Alternate Point Count Survey Locations: 1 alt, 2 alt, 3 alt, 4 alt, 5 alt, 7 alt, 7.1 alt, 8 alt, 9 alt, 10 alt, 11 alt, 13 alt, 14 alt, 16 alt, 16.2 alt, 17 alt, 15.1

**Incidental bird species observed outside of timed point count surveys
(Alpha Codes or Common Names):**
CEDW

Overall Survey Notes:



Field Data Sheet

Breeding Bird Survey

Submitted By: abutler@edrdpc.com

Submitted Time: July 21, 2023 9:14 AM

Survey Information

Project Name: Hoffman Falls

Survey Date: July 19, 2023

Surveyor Name: Anna Butler

Points Surveyed: 65-80

Survey Start Time: 05:34

Survey End Time: 10:29

Weather Conditions at Start of Survey

Temperature (°F): 57

Wind Speed (mph): 0 - 1 (Calm; Smoke rises vertically)

Wind Direction: N

Cloud Cover: None (Clear)

Visibility: Good (10+ miles; clear)

Precipitation: None (Clear)

Weather Notes:



Field Data Sheet

Open Field Condition Observations

Corresponding Point ID(s): 77

Anthropogenic Disturbance/Management Practices: Traffic Noise

Primary Open Field Cover Type: Field Cropland (including hay, wheat, oats, etc.)

Estimated Grass Cover (%): 25-50%

Estimated Forb Cover (%): 25-50%

Estimated Woody Vegetation Cover (%): None

Estimated Bare Ground (%): None

Estimated Litter Depth (inches): 0-1"

Average Vegetation Height (inches): 18-24

Dominant Plant Species (Common Names): Grass, alfalfa, clover

Invasive Plant Species (Common Names):

Representative Photo(s):





Field Data Sheet





Field Data Sheet

Notes :

Do you need to report observations of another open field?

Yes



Field Data Sheet

Corresponding Point ID(s): 79

Anthropogenic Disturbance/Management Practices: Traffic Noise

Primary Open Field Cover Type: Row Cropland (Active)

Estimated Grass Cover (%): 1-10%

Estimated Forb Cover (%): 25-50%

Estimated Woody Vegetation Cover (%): None

Estimated Bare Ground (%): 10-25%

Estimated Litter Depth (inches): None

Average Vegetation Height (inches): 60+

Dominant Plant Species (Common Names): Corn

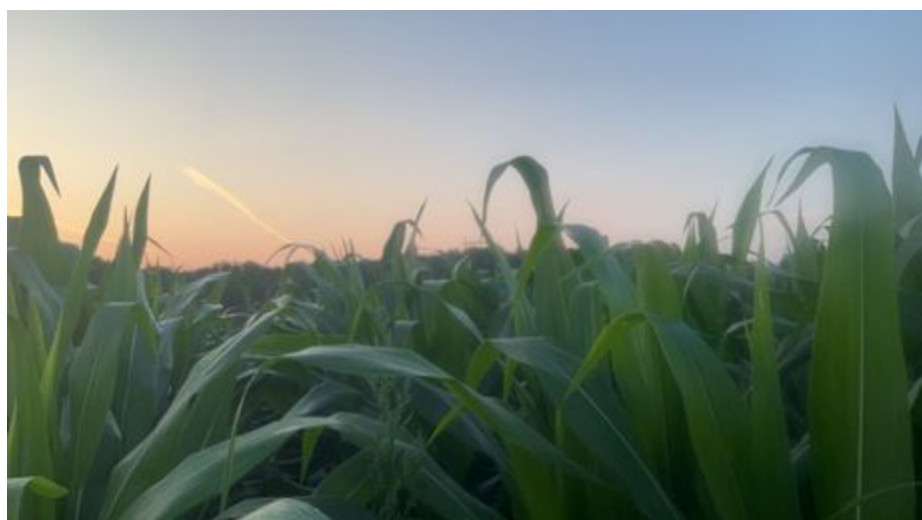
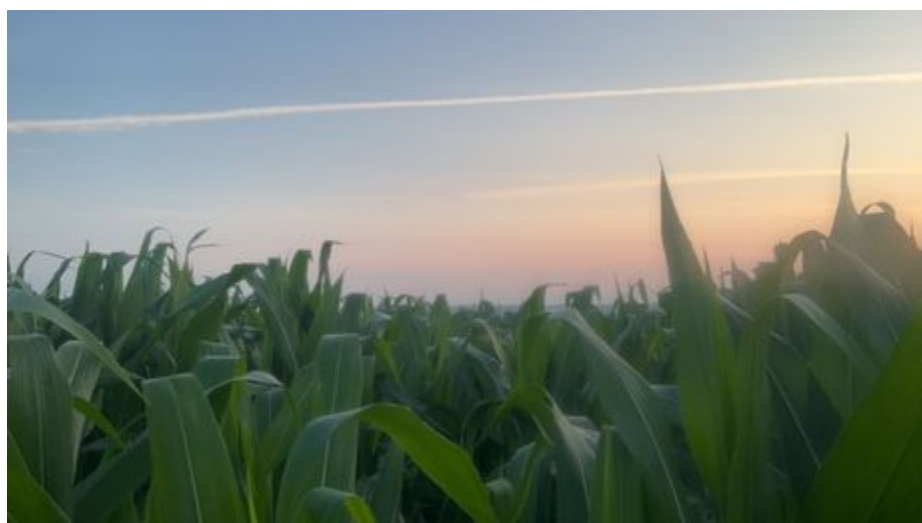
Invasive Plant Species (Common Names):

Representative Photo(s):





Field Data Sheet





Field Data Sheet

Notes :

Do you need to report observations of another open field?

Yes



Field Data Sheet

Corresponding Point ID(s): 80

Anthropogenic Disturbance/Management Practices: Traffic Noise

Primary Open Field Cover Type: Field Cropland (including hay, wheat, oats, etc.)

Estimated Grass Cover (%): 25-50%

Estimated Forb Cover (%): 25-50%

Estimated Woody Vegetation Cover (%): None

Estimated Bare Ground (%): None

Estimated Litter Depth (inches): 0-1"

Average Vegetation Height (inches): 12-18

Dominant Plant Species (Common Names): Grass, clover

Invasive Plant Species (Common Names):

Representative Photo(s):





Field Data Sheet





Field Data Sheet

Notes :

Do you need to report observations of another open field?

Yes



Field Data Sheet

Corresponding Point ID(s): 78

Anthropogenic Disturbance/Management Practices: Traffic Noise

Primary Open Field Cover Type: Field Cropland (including hay, wheat, oats, etc.)

Estimated Grass Cover (%): 25-50%

Estimated Forb Cover (%): 25-50%

Estimated Woody Vegetation Cover (%): None

Estimated Bare Ground (%): None

Estimated Litter Depth (inches): 0-1"

Average Vegetation Height (inches): 12-18

Dominant Plant Species (Common Names): Grass, alfalfa

Invasive Plant Species (Common Names):

Representative Photo(s):





Field Data Sheet





Field Data Sheet

Notes :

Do you need to report observations of another open field?

Yes



Field Data Sheet

Corresponding Point ID(s): 75

Anthropogenic Disturbance/Management Practices: Farm Equipment Noise

Primary Open Field Cover Type: Field Cropland (including hay, wheat, oats, etc.)

Estimated Grass Cover (%): None

Estimated Forb Cover (%): 50-90%

Estimated Woody Vegetation Cover (%): None

Estimated Bare Ground (%): 1-10%

Estimated Litter Depth (inches): None

Average Vegetation Height (inches): 12-18

Dominant Plant Species (Common Names): Alfalfa

Invasive Plant Species (Common Names):

Representative Photo(s):





Field Data Sheet





Field Data Sheet

Notes :

Do you need to report observations of another open field?

Yes



Field Data Sheet

Corresponding Point ID(s): 74

Anthropogenic Disturbance/Management Practices: Farm Equipment Noise

Primary Open Field Cover Type: Field Cropland (including hay, wheat, oats, etc.)

Estimated Grass Cover (%): None

Estimated Forb Cover (%): 50-90%

Estimated Woody Vegetation Cover (%): None

Estimated Bare Ground (%): 1-10%

Estimated Litter Depth (inches): None

Average Vegetation Height (inches): 12-18

Dominant Plant Species (Common Names): Alfalfa

Invasive Plant Species (Common Names):

Representative Photo(s):





Field Data Sheet





Field Data Sheet

Notes :

Do you need to report observations of another open field?

Yes



Field Data Sheet

Corresponding Point ID(s): 73

Anthropogenic Disturbance/Management Practices: Farm Equipment Noise

Primary Open Field Cover Type: Field Cropland (including hay, wheat, oats, etc.)

Estimated Grass Cover (%): 25-50%

Estimated Forb Cover (%): 10-25%

Estimated Woody Vegetation Cover (%): None

Estimated Bare Ground (%): 25-50%

Estimated Litter Depth (inches): None

Average Vegetation Height (inches): 4-6

Dominant Plant Species (Common Names): Alfalfa, grass

Invasive Plant Species (Common Names):

Representative Photo(s):





Field Data Sheet





Field Data Sheet

Notes :

Do you need to report observations of another open field?

Yes



Field Data Sheet

Corresponding Point ID(s): 72

Anthropogenic Disturbance/Management Practices: Farm Equipment Noise

Primary Open Field Cover Type: Field Cropland (including hay, wheat, oats, etc.)

Estimated Grass Cover (%): 1-10%

Estimated Forb Cover (%): 10-25%

Estimated Woody Vegetation Cover (%): None

Estimated Bare Ground (%): 25-50%

Estimated Litter Depth (inches): None

Average Vegetation Height (inches): 4-6

Dominant Plant Species (Common Names): Grass, clover

Invasive Plant Species (Common Names):

Representative Photo(s):





Field Data Sheet





Field Data Sheet

Notes :

Do you need to report observations of another open field?

Yes



Field Data Sheet

Corresponding Point ID(s): 76

Anthropogenic Disturbance/Management Practices: Traffic Noise

Primary Open Field Cover Type: Field Cropland (including hay, wheat, oats, etc.)

Estimated Grass Cover (%): 25-50%

Estimated Forb Cover (%): 25-50%

Estimated Woody Vegetation Cover (%): None

Estimated Bare Ground (%): None

Estimated Litter Depth (inches): 0-1"

Average Vegetation Height (inches): 24-30

Dominant Plant Species (Common Names): Grass, alfalfa

Invasive Plant Species (Common Names):

Representative Photo(s):





Field Data Sheet





Field Data Sheet

Notes :

Do you need to report observations of another open field?

Yes



Field Data Sheet

Corresponding Point ID(s): 71

Anthropogenic Disturbance/Management Practices: Traffic Noise

Primary Open Field Cover Type: Field Cropland (including hay, wheat, oats, etc.)

Estimated Grass Cover (%): 25-50%

Estimated Forb Cover (%): 25-50%

Estimated Woody Vegetation Cover (%): None

Estimated Bare Ground (%): None

Estimated Litter Depth (inches): 0-1"

Average Vegetation Height (inches): 30-36

Dominant Plant Species (Common Names): Grass, alfalfa

Invasive Plant Species (Common Names):

Representative Photo(s):





Field Data Sheet





Field Data Sheet

Notes :

Do you need to report observations of another open field?

Yes



Field Data Sheet

Corresponding Point ID(s): 70

Anthropogenic Disturbance/Management Practices: Traffic Noise

Primary Open Field Cover Type: Row Cropland (Active)

Estimated Grass Cover (%): 1-10%

Estimated Forb Cover (%): 50-90%

Estimated Woody Vegetation Cover (%): None

Estimated Bare Ground (%): 1-10%

Estimated Litter Depth (inches): None

Average Vegetation Height (inches): 60+

Dominant Plant Species (Common Names): Corn

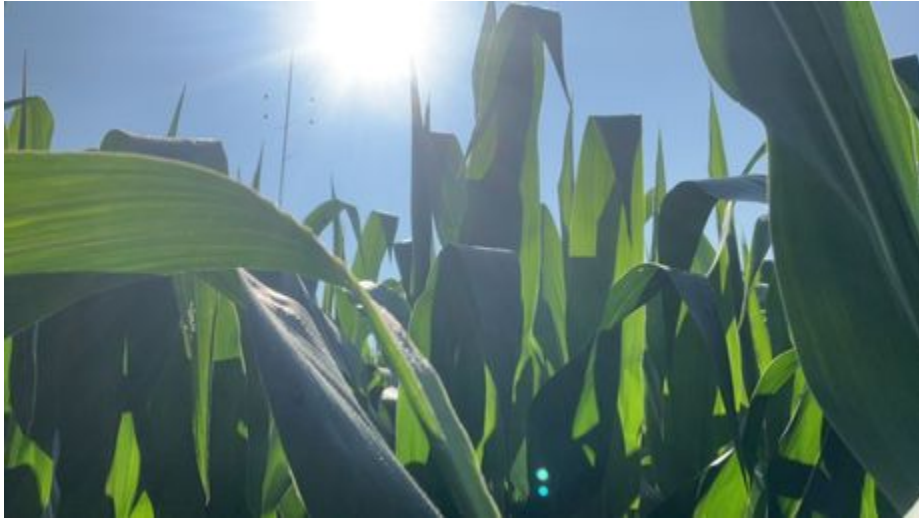
Invasive Plant Species (Common Names):

Representative Photo(s):





Field Data Sheet





Field Data Sheet

Notes :

Do you need to report observations of another open field?

Yes



Field Data Sheet

Corresponding Point ID(s): 76.1

Anthropogenic Disturbance/Management Practices: Traffic Noise

Primary Open Field Cover Type: Successional Old Field

Estimated Grass Cover (%): 10-25%

Estimated Forb Cover (%): 25-50%

Estimated Woody Vegetation Cover (%): 1-10%

Estimated Bare Ground (%): None

Estimated Litter Depth (inches): 1-3"

Average Vegetation Height (inches): 48-54

Dominant Plant Species (Common Names): Goldenrod, grass

Invasive Plant Species (Common Names): Honeysuckle

Representative Photo(s):

Notes :

No photos taken on this date

Do you need to report observations of another open field?

Yes



Field Data Sheet

Corresponding Point ID(s): 69

Anthropogenic Disturbance/Management Practices: Traffic Noise

Primary Open Field Cover Type: Field Cropland (including hay, wheat, oats, etc.)

Estimated Grass Cover (%): 50-90%

Estimated Forb Cover (%): 10-25%

Estimated Woody Vegetation Cover (%): None

Estimated Bare Ground (%): None

Estimated Litter Depth (inches): 0-1"

Average Vegetation Height (inches): 12-18

Dominant Plant Species (Common Names): Grass, alfalfa

Invasive Plant Species (Common Names):

Representative Photo(s):





Field Data Sheet





Field Data Sheet

Notes :

Do you need to report observations of another open field?

Yes



Field Data Sheet

Corresponding Point ID(s): 65

Anthropogenic Disturbance/Management Practices: Traffic Noise

Primary Open Field Cover Type: Row Cropland (Active)

Estimated Grass Cover (%): 1-10%

Estimated Forb Cover (%): 50-90%

Estimated Woody Vegetation Cover (%): None

Estimated Bare Ground (%): 10-25%

Estimated Litter Depth (inches): None

Average Vegetation Height (inches): 12-18

Dominant Plant Species (Common Names): Soy

Invasive Plant Species (Common Names):

Representative Photo(s):





Field Data Sheet





Field Data Sheet

Notes :

Do you need to report observations of another open field?

Yes



Field Data Sheet

Corresponding Point ID(s): 66

Anthropogenic Disturbance/Management Practices: Traffic Noise

Primary Open Field Cover Type: Row Cropland (Active)

Estimated Grass Cover (%): 25-50%

Estimated Forb Cover (%): 25-50%

Estimated Woody Vegetation Cover (%): None

Estimated Bare Ground (%): 25-50%

Estimated Litter Depth (inches): None

Average Vegetation Height (inches): 12-18

Dominant Plant Species (Common Names): Soy, grass

Invasive Plant Species (Common Names):

Representative Photo(s):





Field Data Sheet





Field Data Sheet

Notes :

Do you need to report observations of another open field?

Yes



Field Data Sheet

Corresponding Point ID(s): 67

Anthropogenic Disturbance/Management Practices: Traffic Noise

Primary Open Field Cover Type: Row Cropland (Active)

Estimated Grass Cover (%): 1-10%

Estimated Forb Cover (%): 50-90%

Estimated Woody Vegetation Cover (%): None

Estimated Bare Ground (%): 10-25%

Estimated Litter Depth (inches): None

Average Vegetation Height (inches): 12-18

Dominant Plant Species (Common Names): Soy

Invasive Plant Species (Common Names):

Representative Photo(s):





Field Data Sheet





Field Data Sheet

Notes :

Do you need to report observations of another open field?

Yes



Field Data Sheet

Corresponding Point ID(s): 68

Anthropogenic Disturbance/Management Practices: Traffic Noise

Primary Open Field Cover Type: Row Cropland (Active)

Estimated Grass Cover (%): None

Estimated Forb Cover (%): 50-90%

Estimated Woody Vegetation Cover (%): None

Estimated Bare Ground (%): 1-10%

Estimated Litter Depth (inches): None

Average Vegetation Height (inches): 18-24

Dominant Plant Species (Common Names): Soy

Invasive Plant Species (Common Names):

Representative Photo(s):





Field Data Sheet





Field Data Sheet

Notes :

Do you need to report observations of another open field?

No



Field Data Sheet

Weather Conditions at End of Survey

Temperature (°F): 72

Wind Speed (mph): 1 – 3 (Light Air; Smoke drifts)

Wind Direction: NNW

Cloud Cover: Mostly Clear (10-25%)

Visibility: Good (10+ miles; clear)

Precipitation: None (Clear)

Weather Notes:

Were there any notable weather events/changes during the survey? No

Bird Observation Summary

Were any Endangered/Threatened Species observed?

No

Were any Species of Special Concern observed?

No

Were probable, possible, or confirmed breeding behaviors observed for any Listed Species (Endangered/Threatened/Special Concern)?

No

Were there additional photos documenting birds observed, habitat conditions, and/or other features of interest?

No

Additional Photo(s):

Were any alternate point count survey locations used due to access or visual constraints?

No

Alternate Point Count Survey Locations:



Field Data Sheet

**Incidental bird species observed outside of timed point count surveys
(Alpha Codes or Common Names):**

OVEN

Overall Survey Notes:



Field Data Sheet

Breeding Bird Survey

Submitted By: bsmith@edrdpc.com

Submitted Time: July 20, 2023 9:50 AM

Survey Information

Project Name: Hoffman Falls

Survey Date: July 20, 2023

Surveyor Name: Brooke Smith

Points Surveyed: 51-64

Survey Start Time: 05:18

Survey End Time: 09:50

Weather Conditions at Start of Survey

Temperature (°F): 52

Wind Speed (mph): 1 - 3 (Light Air; Smoke drifts)

Wind Direction: S

Cloud Cover: Overcast (90-100%)

Visibility: Good (10+ miles; clear)

Precipitation: None (Clear)

Weather Notes:



Field Data Sheet

Open Field Condition Observations

Corresponding Point ID(s): 52

Anthropogenic Disturbance/Management Practices: None notable

Primary Open Field Cover Type: Row Cropland (Active)

Estimated Grass Cover (%): None

Estimated Forb Cover (%): 50-90%

Estimated Woody Vegetation Cover (%): None

Estimated Bare Ground (%): 1-10%

Estimated Litter Depth (inches): 0-1"

Average Vegetation Height (inches): 18-24

Dominant Plant Species (Common Names): Soybean

Invasive Plant Species (Common Names):

Representative Photo(s):





Field Data Sheet





Field Data Sheet

Notes :

Do you need to report observations of another open field?

Yes



Field Data Sheet

Corresponding Point ID(s): 53

Anthropogenic Disturbance/Management Practices: None notable

Primary Open Field Cover Type: Row Cropland (Active)

Estimated Grass Cover (%): None

Estimated Forb Cover (%): 90-100%

Estimated Woody Vegetation Cover (%): None

Estimated Bare Ground (%): 1-10%

Estimated Litter Depth (inches): 0-1"

Average Vegetation Height (inches): 18-24

Dominant Plant Species (Common Names): Soybean

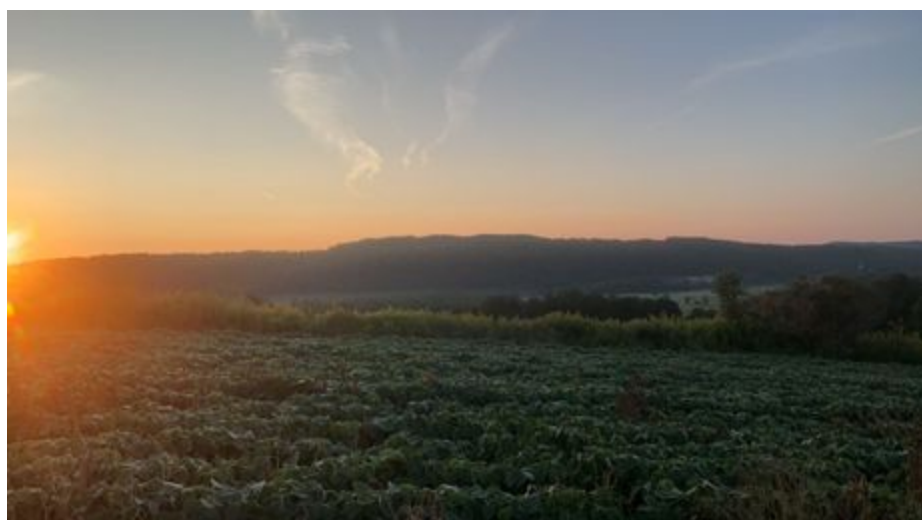
Invasive Plant Species (Common Names):

Representative Photo(s):





Field Data Sheet





Field Data Sheet

Notes :

Do you need to report observations of another open field?

Yes



Field Data Sheet

Corresponding Point ID(s): 55

Anthropogenic Disturbance/Management Practices: Traffic Noise

Primary Open Field Cover Type: Row Cropland (Active)

Estimated Grass Cover (%): None

Estimated Forb Cover (%): 90-100%

Estimated Woody Vegetation Cover (%): None

Estimated Bare Ground (%): None

Estimated Litter Depth (inches): None

Average Vegetation Height (inches): 54-60

Dominant Plant Species (Common Names): Corn

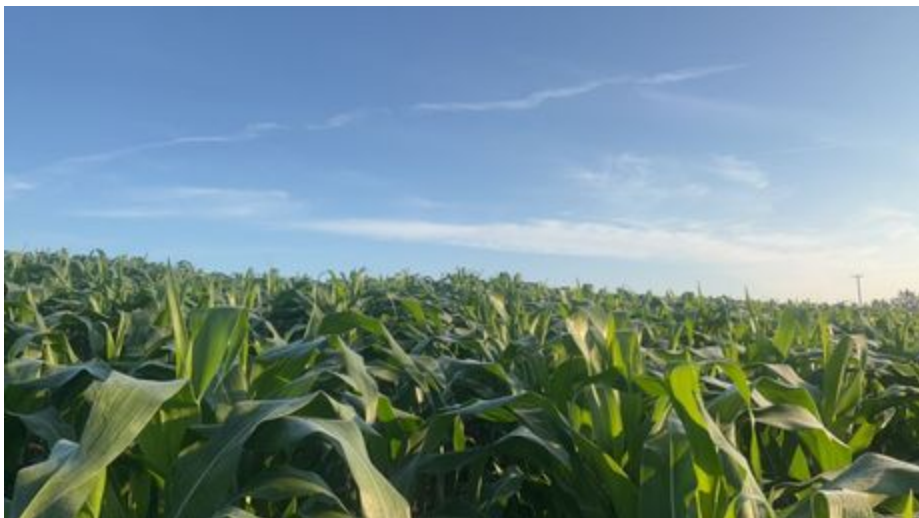
Invasive Plant Species (Common Names):

Representative Photo(s):





Field Data Sheet





Field Data Sheet

Notes :

Do you need to report observations of another open field?

Yes



Field Data Sheet

Corresponding Point ID(s): 58

Anthropogenic Disturbance/Management Practices: Traffic Noise

Primary Open Field Cover Type: Field Cropland (including hay, wheat, oats, etc.)

Estimated Grass Cover (%): 50-90%

Estimated Forb Cover (%): 50-90%

Estimated Woody Vegetation Cover (%): None

Estimated Bare Ground (%): None

Estimated Litter Depth (inches): None

Average Vegetation Height (inches): 24-30

Dominant Plant Species (Common Names): Grass

Invasive Plant Species (Common Names):

Representative Photo(s):





Field Data Sheet





Field Data Sheet

Notes :

Do you need to report observations of another open field?

Yes



Field Data Sheet

Corresponding Point ID(s): 57

Anthropogenic Disturbance/Management Practices: Traffic Noise

Primary Open Field Cover Type: Field Cropland (including hay, wheat, oats, etc.)

Estimated Grass Cover (%): 90-100%

Estimated Forb Cover (%): None

Estimated Woody Vegetation Cover (%): None

Estimated Bare Ground (%): None

Estimated Litter Depth (inches): 1-3"

Average Vegetation Height (inches): 2-4

Dominant Plant Species (Common Names): Grass

Invasive Plant Species (Common Names):

Representative Photo(s):





Field Data Sheet





Field Data Sheet

Notes :

Do you need to report observations of another open field?

Yes



Field Data Sheet

Corresponding Point ID(s): 56

Anthropogenic Disturbance/Management Practices: Traffic Noise

Primary Open Field Cover Type: Row Cropland (Active)

Estimated Grass Cover (%): 25-50%

Estimated Forb Cover (%): 25-50%

Estimated Woody Vegetation Cover (%): None

Estimated Bare Ground (%): None

Estimated Litter Depth (inches): 1-3"

Average Vegetation Height (inches): 54-60

Dominant Plant Species (Common Names): Corn

Invasive Plant Species (Common Names):

Representative Photo(s):





Field Data Sheet





Field Data Sheet

Notes :

Do you need to report observations of another open field?

Yes



Field Data Sheet

Corresponding Point ID(s): 54

Anthropogenic Disturbance/Management Practices: Traffic Noise

Primary Open Field Cover Type: Field Cropland (including hay, wheat, oats, etc.)

Estimated Grass Cover (%): 90-100%

Estimated Forb Cover (%): None

Estimated Woody Vegetation Cover (%): None

Estimated Bare Ground (%): None

Estimated Litter Depth (inches): None

Average Vegetation Height (inches): 36-42

Dominant Plant Species (Common Names): Wheat

Invasive Plant Species (Common Names):

Representative Photo(s):





Field Data Sheet





Field Data Sheet

Notes :

Do you need to report observations of another open field?

Yes



Field Data Sheet

Corresponding Point ID(s): 59 (alt)

Anthropogenic Disturbance/Management Practices: Traffic Noise

Primary Open Field Cover Type: Pastureland

Estimated Grass Cover (%): 90-100%

Estimated Forb Cover (%): None

Estimated Woody Vegetation Cover (%): None

Estimated Bare Ground (%): None

Estimated Litter Depth (inches): None

Average Vegetation Height (inches): 12-18

Dominant Plant Species (Common Names): Grass

Invasive Plant Species (Common Names):

Representative Photo(s):





Field Data Sheet





Field Data Sheet

Notes :

Do you need to report observations of another open field?

Yes



Field Data Sheet

Corresponding Point ID(s): 62

Anthropogenic Disturbance/Management Practices: Traffic Noise

Primary Open Field Cover Type: Pastureland

Estimated Grass Cover (%): 90-100%

Estimated Forb Cover (%): None

Estimated Woody Vegetation Cover (%): None

Estimated Bare Ground (%): None

Estimated Litter Depth (inches): 0-1"

Average Vegetation Height (inches): 6-12

Dominant Plant Species (Common Names): Grass

Invasive Plant Species (Common Names):

Representative Photo(s):





Field Data Sheet





Field Data Sheet

Notes :

Do you need to report observations of another open field?

Yes



Field Data Sheet

Corresponding Point ID(s): 63

Anthropogenic Disturbance/Management Practices: Traffic Noise

Primary Open Field Cover Type: Pastureland

Estimated Grass Cover (%): 90-100%

Estimated Forb Cover (%): None

Estimated Woody Vegetation Cover (%): None

Estimated Bare Ground (%): None

Estimated Litter Depth (inches): 0-1"

Average Vegetation Height (inches): 12-18

Dominant Plant Species (Common Names): Grass

Invasive Plant Species (Common Names):

Representative Photo(s):





Field Data Sheet





Field Data Sheet

Notes :

Do you need to report observations of another open field?

Yes



Field Data Sheet

Corresponding Point ID(s): 64

Anthropogenic Disturbance/Management Practices: None notable

Primary Open Field Cover Type: Field Cropland (including hay, wheat, oats, etc.)

Estimated Grass Cover (%): 1-10%

Estimated Forb Cover (%): 50-90%

Estimated Woody Vegetation Cover (%): None

Estimated Bare Ground (%): None

Estimated Litter Depth (inches): None

Average Vegetation Height (inches): 12-18

Dominant Plant Species (Common Names): Clover

Invasive Plant Species (Common Names):

Representative Photo(s):





Field Data Sheet





Field Data Sheet

Notes :

Do you need to report observations of another open field?

Yes



Field Data Sheet

Corresponding Point ID(s): 61 (Alt)

Anthropogenic Disturbance/Management Practices: Traffic Noise

Primary Open Field Cover Type: Field Cropland (including hay, wheat, oats, etc.)

Estimated Grass Cover (%): 1-10%

Estimated Forb Cover (%): 90-100%

Estimated Woody Vegetation Cover (%): None

Estimated Bare Ground (%): None

Estimated Litter Depth (inches): None

Average Vegetation Height (inches): 12-18

Dominant Plant Species (Common Names): Clover

Invasive Plant Species (Common Names):

Representative Photo(s):





Field Data Sheet





Field Data Sheet

Notes :

Do you need to report observations of another open field?

Yes



Field Data Sheet

Corresponding Point ID(s): 60 (alt)

Anthropogenic Disturbance/Management Practices: None notable

Primary Open Field Cover Type: Pastureland

Estimated Grass Cover (%): 90-100%

Estimated Forb Cover (%): None

Estimated Woody Vegetation Cover (%): None

Estimated Bare Ground (%): None

Estimated Litter Depth (inches): 0-1"

Average Vegetation Height (inches): 12-18

Dominant Plant Species (Common Names): Grass

Invasive Plant Species (Common Names):

Representative Photo(s):





Field Data Sheet





Field Data Sheet

Notes :

Do you need to report observations of another open field?

Yes



Field Data Sheet

Corresponding Point ID(s): 51

Anthropogenic Disturbance/Management Practices: None notable

Primary Open Field Cover Type: Row Cropland (Active)

Estimated Grass Cover (%): None

Estimated Forb Cover (%): 90-100%

Estimated Woody Vegetation Cover (%): None

Estimated Bare Ground (%): 1-10%

Estimated Litter Depth (inches): 1-3"

Average Vegetation Height (inches): 12-18

Dominant Plant Species (Common Names): Soybean and grass

Invasive Plant Species (Common Names):

Representative Photo(s):





Field Data Sheet





Field Data Sheet

Notes :

Do you need to report observations of another open field?

No

This figure has been redacted from this publicly available document because it contains protected/confidential information regarding the proposed facility location and/or the detailed locations of NYS threatened or endangered species.



Field Data Sheet

**Incidental bird species observed outside of timed point count surveys
(Alpha Codes or Common Names):**

Overall Survey Notes:

APPENDIX C

Breeding Bird Survey Observations

This appendix has been redacted from this publicly available document because it contains protected/confidential information regarding the detailed locations of NYS threatened or endangered species.

This appendix has been redacted from this publicly available document because it contains protected/confidential information regarding the detailed locations of NYS threatened or endangered species.

This appendix has been redacted from this publicly available document because it contains protected/confidential information regarding the detailed locations of NYS threatened or endangered species.

This appendix has been redacted from this publicly available document because it contains protected/confidential information regarding the detailed locations of NYS threatened or endangered species.

This appendix has been redacted from this publicly available document because it contains protected/confidential information regarding the detailed locations of NYS threatened or endangered species.

This appendix has been redacted from this publicly available document because it contains protected/confidential information regarding the detailed locations of NYS threatened or endangered species.

This appendix has been redacted from this publicly available document because it contains protected/confidential information regarding the detailed locations of NYS threatened or endangered species.

This appendix has been redacted from this publicly available document because it contains protected/confidential information regarding the detailed locations of NYS threatened or endangered species.

This appendix has been redacted from this publicly available document because it contains protected/confidential information regarding the detailed locations of NYS threatened or endangered species.

This appendix has been redacted from this publicly available document because it contains protected/confidential information regarding the detailed locations of NYS threatened or endangered species.

This appendix has been redacted from this publicly available document because it contains protected/confidential information regarding the detailed locations of NYS threatened or endangered species.

This appendix has been redacted from this publicly available document because it contains protected/confidential information regarding the detailed locations of NYS threatened or endangered species.

This appendix has been redacted from this publicly available document because it contains protected/confidential information regarding the detailed locations of NYS threatened or endangered species.

This appendix has been redacted from this publicly available document because it contains protected/confidential information regarding the detailed locations of NYS threatened or endangered species.

This appendix has been redacted from this publicly available document because it contains protected/confidential information regarding the detailed locations of NYS threatened or endangered species.

This appendix has been redacted from this publicly available document because it contains protected/confidential information regarding the detailed locations of NYS threatened or endangered species.

This appendix has been redacted from this publicly available document because it contains protected/confidential information regarding the detailed locations of NYS threatened or endangered species.

This appendix has been redacted from this publicly available document because it contains protected/confidential information regarding the detailed locations of NYS threatened or endangered species.

This appendix has been redacted from this publicly available document because it contains protected/confidential information regarding the detailed locations of NYS threatened or endangered species.

This appendix has been redacted from this publicly available document because it contains protected/confidential information regarding the detailed locations of NYS threatened or endangered species.

This appendix has been redacted from this publicly available document because it contains protected/confidential information regarding the detailed locations of NYS threatened or endangered species.

This appendix has been redacted from this publicly available document because it contains protected/confidential information regarding the detailed locations of NYS threatened or endangered species.

This appendix has been redacted from this publicly available document because it contains protected/confidential information regarding the detailed locations of NYS threatened or endangered species.

This appendix has been redacted from this publicly available document because it contains protected/confidential information regarding the detailed locations of NYS threatened or endangered species.

This appendix has been redacted from this publicly available document because it contains protected/confidential information regarding the detailed locations of NYS threatened or endangered species.

This appendix has been redacted from this publicly available document because it contains protected/confidential information regarding the detailed locations of NYS threatened or endangered species.

This appendix has been redacted from this publicly available document because it contains protected/confidential information regarding the detailed locations of NYS threatened or endangered species.

This appendix has been redacted from this publicly available document because it contains protected/confidential information regarding the detailed locations of NYS threatened or endangered species.

This appendix has been redacted from this publicly available document because it contains protected/confidential information regarding the detailed locations of NYS threatened or endangered species.

This appendix has been redacted from this publicly available document because it contains protected/confidential information regarding the detailed locations of NYS threatened or endangered species.

This appendix has been redacted from this publicly available document because it contains protected/confidential information regarding the detailed locations of NYS threatened or endangered species.

This appendix has been redacted from this publicly available document because it contains protected/confidential information regarding the detailed locations of NYS threatened or endangered species.

This appendix has been redacted from this publicly available document because it contains protected/confidential information regarding the detailed locations of NYS threatened or endangered species.

This appendix has been redacted from this publicly available document because it contains protected/confidential information regarding the detailed locations of NYS threatened or endangered species.

This appendix has been redacted from this publicly available document because it contains protected/confidential information regarding the detailed locations of NYS threatened or endangered species.

This appendix has been redacted from this publicly available document because it contains protected/confidential information regarding the detailed locations of NYS threatened or endangered species.

This appendix has been redacted from this publicly available document because it contains protected/confidential information regarding the detailed locations of NYS threatened or endangered species.

This appendix has been redacted from this publicly available document because it contains protected/confidential information regarding the detailed locations of NYS threatened or endangered species.

This appendix has been redacted from this publicly available document because it contains protected/confidential information regarding the detailed locations of NYS threatened or endangered species.

This appendix has been redacted from this publicly available document because it contains protected/confidential information regarding the detailed locations of NYS threatened or endangered species.

This appendix has been redacted from this publicly available document because it contains protected/confidential information regarding the detailed locations of NYS threatened or endangered species.

This appendix has been redacted from this publicly available document because it contains protected/confidential information regarding the detailed locations of NYS threatened or endangered species.

This appendix has been redacted from this publicly available document because it contains protected/confidential information regarding the detailed locations of NYS threatened or endangered species.

This appendix has been redacted from this publicly available document because it contains protected/confidential information regarding the detailed locations of NYS threatened or endangered species.

This appendix has been redacted from this publicly available document because it contains protected/confidential information regarding the detailed locations of NYS threatened or endangered species.

This appendix has been redacted from this publicly available document because it contains protected/confidential information regarding the detailed locations of NYS threatened or endangered species.

This appendix has been redacted from this publicly available document because it contains protected/confidential information regarding the detailed locations of NYS threatened or endangered species.

This appendix has been redacted from this publicly available document because it contains protected/confidential information regarding the detailed locations of NYS threatened or endangered species.

This appendix has been redacted from this publicly available document because it contains protected/confidential information regarding the detailed locations of NYS threatened or endangered species.

This appendix has been redacted from this publicly available document because it contains protected/confidential information regarding the detailed locations of NYS threatened or endangered species.

This appendix has been redacted from this publicly available document because it contains protected/confidential information regarding the detailed locations of NYS threatened or endangered species.

This appendix has been redacted from this publicly available document because it contains protected/confidential information regarding the detailed locations of NYS threatened or endangered species.

This appendix has been redacted from this publicly available document because it contains protected/confidential information regarding the detailed locations of NYS threatened or endangered species.

This appendix has been redacted from this publicly available document because it contains protected/confidential information regarding the detailed locations of NYS threatened or endangered species.

This appendix has been redacted from this publicly available document because it contains protected/confidential information regarding the detailed locations of NYS threatened or endangered species.

This appendix has been redacted from this publicly available document because it contains protected/confidential information regarding the detailed locations of NYS threatened or endangered species.

This appendix has been redacted from this publicly available document because it contains protected/confidential information regarding the detailed locations of NYS threatened or endangered species.

This appendix has been redacted from this publicly available document because it contains protected/confidential information regarding the detailed locations of NYS threatened or endangered species.

This appendix has been redacted from this publicly available document because it contains protected/confidential information regarding the detailed locations of NYS threatened or endangered species.

This appendix has been redacted from this publicly available document because it contains protected/confidential information regarding the detailed locations of NYS threatened or endangered species.

This appendix has been redacted from this publicly available document because it contains protected/confidential information regarding the detailed locations of NYS threatened or endangered species.

This appendix has been redacted from this publicly available document because it contains protected/confidential information regarding the detailed locations of NYS threatened or endangered species.

This appendix has been redacted from this publicly available document because it contains protected/confidential information regarding the detailed locations of NYS threatened or endangered species.

This appendix has been redacted from this publicly available document because it contains protected/confidential information regarding the detailed locations of NYS threatened or endangered species.

This appendix has been redacted from this publicly available document because it contains protected/confidential information regarding the detailed locations of NYS threatened or endangered species.

This appendix has been redacted from this publicly available document because it contains protected/confidential information regarding the detailed locations of NYS threatened or endangered species.

This appendix has been redacted from this publicly available document because it contains protected/confidential information regarding the detailed locations of NYS threatened or endangered species.

This appendix has been redacted from this publicly available document because it contains protected/confidential information regarding the detailed locations of NYS threatened or endangered species.

This appendix has been redacted from this publicly available document because it contains protected/confidential information regarding the detailed locations of NYS threatened or endangered species.

This appendix has been redacted from this publicly available document because it contains protected/confidential information regarding the detailed locations of NYS threatened or endangered species.

This appendix has been redacted from this publicly available document because it contains protected/confidential information regarding the detailed locations of NYS threatened or endangered species.

This appendix has been redacted from this publicly available document because it contains protected/confidential information regarding the detailed locations of NYS threatened or endangered species.

This appendix has been redacted from this publicly available document because it contains protected/confidential information regarding the detailed locations of NYS threatened or endangered species.

This appendix has been redacted from this publicly available document because it contains protected/confidential information regarding the detailed locations of NYS threatened or endangered species.

This appendix has been redacted from this publicly available document because it contains protected/confidential information regarding the detailed locations of NYS threatened or endangered species.

This appendix has been redacted from this publicly available document because it contains protected/confidential information regarding the detailed locations of NYS threatened or endangered species.

This appendix has been redacted from this publicly available document because it contains protected/confidential information regarding the detailed locations of NYS threatened or endangered species.

This appendix has been redacted from this publicly available document because it contains protected/confidential information regarding the detailed locations of NYS threatened or endangered species.

This appendix has been redacted from this publicly available document because it contains protected/confidential information regarding the detailed locations of NYS threatened or endangered species.

This appendix has been redacted from this publicly available document because it contains protected/confidential information regarding the detailed locations of NYS threatened or endangered species.

This appendix has been redacted from this publicly available document because it contains protected/confidential information regarding the detailed locations of NYS threatened or endangered species.

This appendix has been redacted from this publicly available document because it contains protected/confidential information regarding the detailed locations of NYS threatened or endangered species.

This appendix has been redacted from this publicly available document because it contains protected/confidential information regarding the detailed locations of NYS threatened or endangered species.

This appendix has been redacted from this publicly available document because it contains protected/confidential information regarding the detailed locations of NYS threatened or endangered species.

This appendix has been redacted from this publicly available document because it contains protected/confidential information regarding the detailed locations of NYS threatened or endangered species.

This appendix has been redacted from this publicly available document because it contains protected/confidential information regarding the detailed locations of NYS threatened or endangered species.

This appendix has been redacted from this publicly available document because it contains protected/confidential information regarding the detailed locations of NYS threatened or endangered species.

This appendix has been redacted from this publicly available document because it contains protected/confidential information regarding the detailed locations of NYS threatened or endangered species.

This appendix has been redacted from this publicly available document because it contains protected/confidential information regarding the detailed locations of NYS threatened or endangered species.

This appendix has been redacted from this publicly available document because it contains protected/confidential information regarding the detailed locations of NYS threatened or endangered species.

This appendix has been redacted from this publicly available document because it contains protected/confidential information regarding the detailed locations of NYS threatened or endangered species.

This appendix has been redacted from this publicly available document because it contains protected/confidential information regarding the detailed locations of NYS threatened or endangered species.

This appendix has been redacted from this publicly available document because it contains protected/confidential information regarding the detailed locations of NYS threatened or endangered species.

This appendix has been redacted from this publicly available document because it contains protected/confidential information regarding the detailed locations of NYS threatened or endangered species.

This appendix has been redacted from this publicly available document because it contains protected/confidential information regarding the detailed locations of NYS threatened or endangered species.

This appendix has been redacted from this publicly available document because it contains protected/confidential information regarding the detailed locations of NYS threatened or endangered species.

This appendix has been redacted from this publicly available document because it contains protected/confidential information regarding the detailed locations of NYS threatened or endangered species.

This appendix has been redacted from this publicly available document because it contains protected/confidential information regarding the detailed locations of NYS threatened or endangered species.

This appendix has been redacted from this publicly available document because it contains protected/confidential information regarding the detailed locations of NYS threatened or endangered species.

This appendix has been redacted from this publicly available document because it contains protected/confidential information regarding the detailed locations of NYS threatened or endangered species.

This appendix has been redacted from this publicly available document because it contains protected/confidential information regarding the detailed locations of NYS threatened or endangered species.

This appendix has been redacted from this publicly available document because it contains protected/confidential information regarding the detailed locations of NYS threatened or endangered species.

This appendix has been redacted from this publicly available document because it contains protected/confidential information regarding the detailed locations of NYS threatened or endangered species.

This appendix has been redacted from this publicly available document because it contains protected/confidential information regarding the detailed locations of NYS threatened or endangered species.

This appendix has been redacted from this publicly available document because it contains protected/confidential information regarding the detailed locations of NYS threatened or endangered species.

This appendix has been redacted from this publicly available document because it contains protected/confidential information regarding the detailed locations of NYS threatened or endangered species.

This appendix has been redacted from this publicly available document because it contains protected/confidential information regarding the detailed locations of NYS threatened or endangered species.

This appendix has been redacted from this publicly available document because it contains protected/confidential information regarding the detailed locations of NYS threatened or endangered species.

This appendix has been redacted from this publicly available document because it contains protected/confidential information regarding the detailed locations of NYS threatened or endangered species.

This appendix has been redacted from this publicly available document because it contains protected/confidential information regarding the detailed locations of NYS threatened or endangered species.

This appendix has been redacted from this publicly available document because it contains protected/confidential information regarding the detailed locations of NYS threatened or endangered species.

This appendix has been redacted from this publicly available document because it contains protected/confidential information regarding the detailed locations of NYS threatened or endangered species.

This appendix has been redacted from this publicly available document because it contains protected/confidential information regarding the detailed locations of NYS threatened or endangered species.

This appendix has been redacted from this publicly available document because it contains protected/confidential information regarding the detailed locations of NYS threatened or endangered species.

This appendix has been redacted from this publicly available document because it contains protected/confidential information regarding the detailed locations of NYS threatened or endangered species.

This appendix has been redacted from this publicly available document because it contains protected/confidential information regarding the detailed locations of NYS threatened or endangered species.

This appendix has been redacted from this publicly available document because it contains protected/confidential information regarding the detailed locations of NYS threatened or endangered species.

This appendix has been redacted from this publicly available document because it contains protected/confidential information regarding the detailed locations of NYS threatened or endangered species.

This appendix has been redacted from this publicly available document because it contains protected/confidential information regarding the detailed locations of NYS threatened or endangered species.

This appendix has been redacted from this publicly available document because it contains protected/confidential information regarding the detailed locations of NYS threatened or endangered species.

This appendix has been redacted from this publicly available document because it contains protected/confidential information regarding the detailed locations of NYS threatened or endangered species.

This appendix has been redacted from this publicly available document because it contains protected/confidential information regarding the detailed locations of NYS threatened or endangered species.

This appendix has been redacted from this publicly available document because it contains protected/confidential information regarding the detailed locations of NYS threatened or endangered species.

This appendix has been redacted from this publicly available document because it contains protected/confidential information regarding the detailed locations of NYS threatened or endangered species.

This appendix has been redacted from this publicly available document because it contains protected/confidential information regarding the detailed locations of NYS threatened or endangered species.

This appendix has been redacted from this publicly available document because it contains protected/confidential information regarding the detailed locations of NYS threatened or endangered species.

This appendix has been redacted from this publicly available document because it contains protected/confidential information regarding the detailed locations of NYS threatened or endangered species.

This appendix has been redacted from this publicly available document because it contains protected/confidential information regarding the detailed locations of NYS threatened or endangered species.

This appendix has been redacted from this publicly available document because it contains protected/confidential information regarding the detailed locations of NYS threatened or endangered species.

This appendix has been redacted from this publicly available document because it contains protected/confidential information regarding the detailed locations of NYS threatened or endangered species.

This appendix has been redacted from this publicly available document because it contains protected/confidential information regarding the detailed locations of NYS threatened or endangered species.

This appendix has been redacted from this publicly available document because it contains protected/confidential information regarding the detailed locations of NYS threatened or endangered species.

This appendix has been redacted from this publicly available document because it contains protected/confidential information regarding the detailed locations of NYS threatened or endangered species.

This appendix has been redacted from this publicly available document because it contains protected/confidential information regarding the detailed locations of NYS threatened or endangered species.

This appendix has been redacted from this publicly available document because it contains protected/confidential information regarding the detailed locations of NYS threatened or endangered species.

This appendix has been redacted from this publicly available document because it contains protected/confidential information regarding the detailed locations of NYS threatened or endangered species.