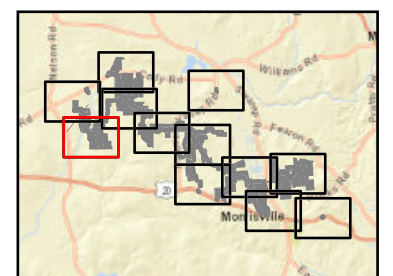


Hoffman Falls Wind

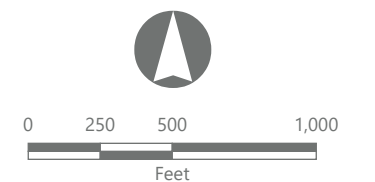
Towns of Eaton, Fenner, Nelson and Smithfield, Madison County, New York

**94-c Permit Application
Matter No. 23-00038**

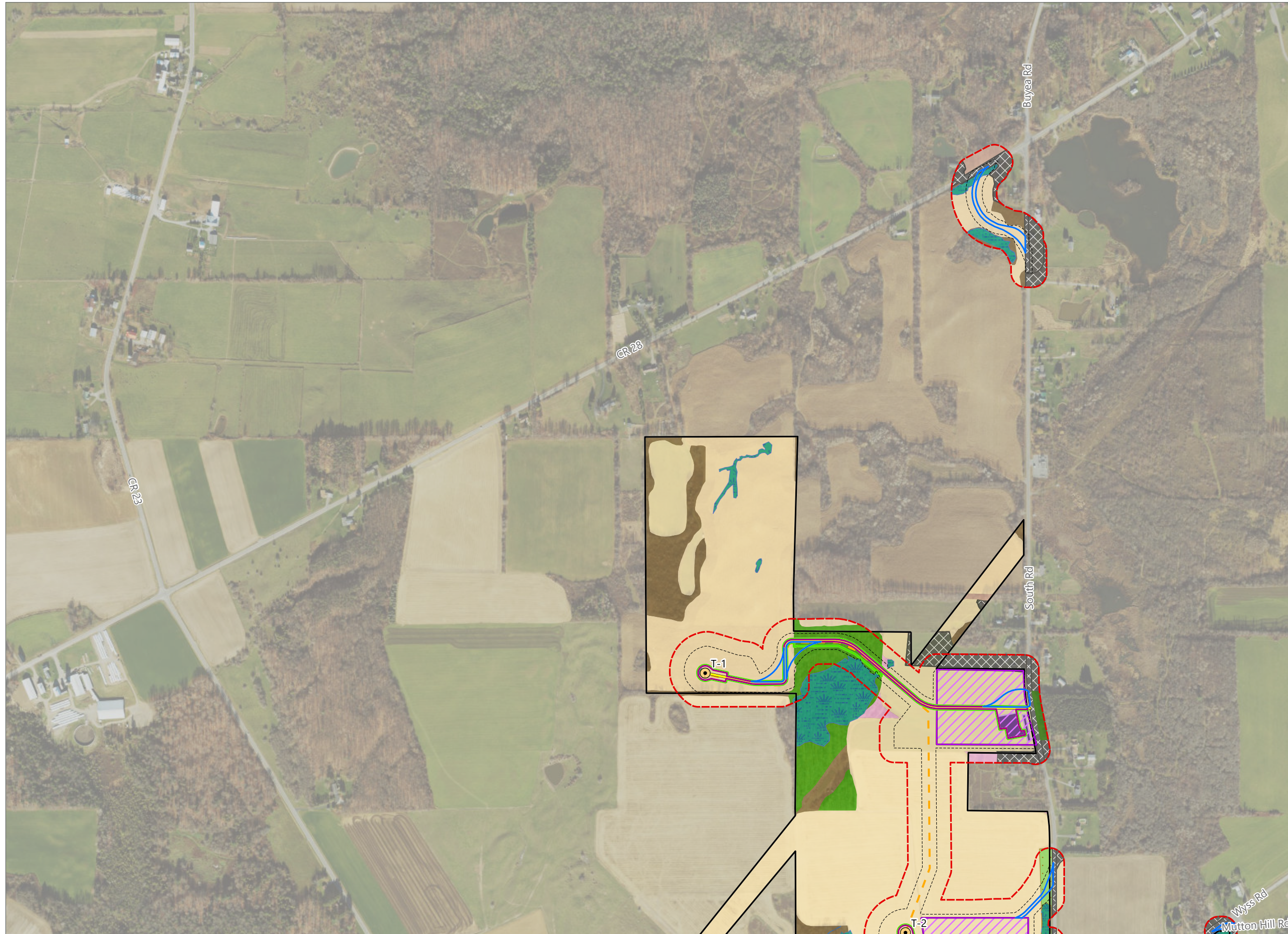
- Ecological Cover Type**
- Developed/Disturbed
 - Cropland/Field Crops
 - Cropland/Row Crops
 - Pastureland
 - Stream
 - Wetland
 - Beech-Maple Mesic Forest
 - Spruce/Fir Plantation
 - Successional Northern Hardwoods
 - Successional Old Field
 - Successional Shrubland
 - Successional Spruce/Fir Plantation
- Facility Components**
- Wind Turbine
 - Access Road
 - Collection Line
 - Laydown Yard
 - Limit of Impervious Surface
 - Limit of Vegetation Management
 - Limit of Disturbance
 - Temporary Turning Improvement
 - Plant Community Study Area
 - Facility Site



Sheet 1 of 12



Prepared February 5, 2024
Basemap: USDA NAIP "2022 New York 60cm" orthoimagery map service

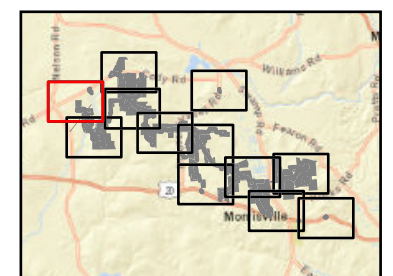


Hoffman Falls Wind

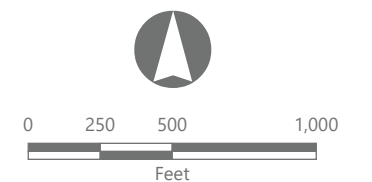
Towns of Eaton, Fenner, Nelson and Smithfield, Madison County, New York

**94-c Permit Application
Matter No. 23-00038**

- Ecological Cover Type**
- Developed/Disturbed
 - Cropland/Row Crops
 - Pastureland
 - Stream
 - Wetland
 - Hemlock-Northern Hardwood Forest
 - Beech-Maple Mesic Forest
 - Spruce/Fir Plantation
 - Successional Northern Hardwoods
 - Successional Old Field
 - Successional Shrubland
- Facility Components**
- Wind Turbine
 - Access Road
 - Collection Line
 - O&M Building
 - Laydown Yard
 - Limit of Impervious Surface
 - Limit of Vegetation Management
 - Limit of Disturbance
 - Temporary Turning Improvement
 - Plant Community Study Area
 - Facility Site



Sheet 2 of 12



Prepared February 5, 2024
Basemap: USDA NAIP '2022 New York 60cm' orthoimagery map service

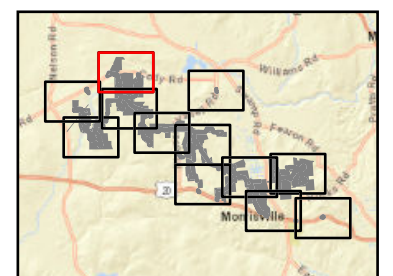


Hoffman Falls Wind

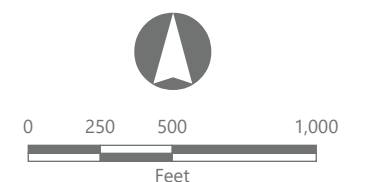
Towns of Eaton, Fenner, Nelson and Smithfield, Madison County, New York

**94-c Permit Application
Matter No. 23-00038**

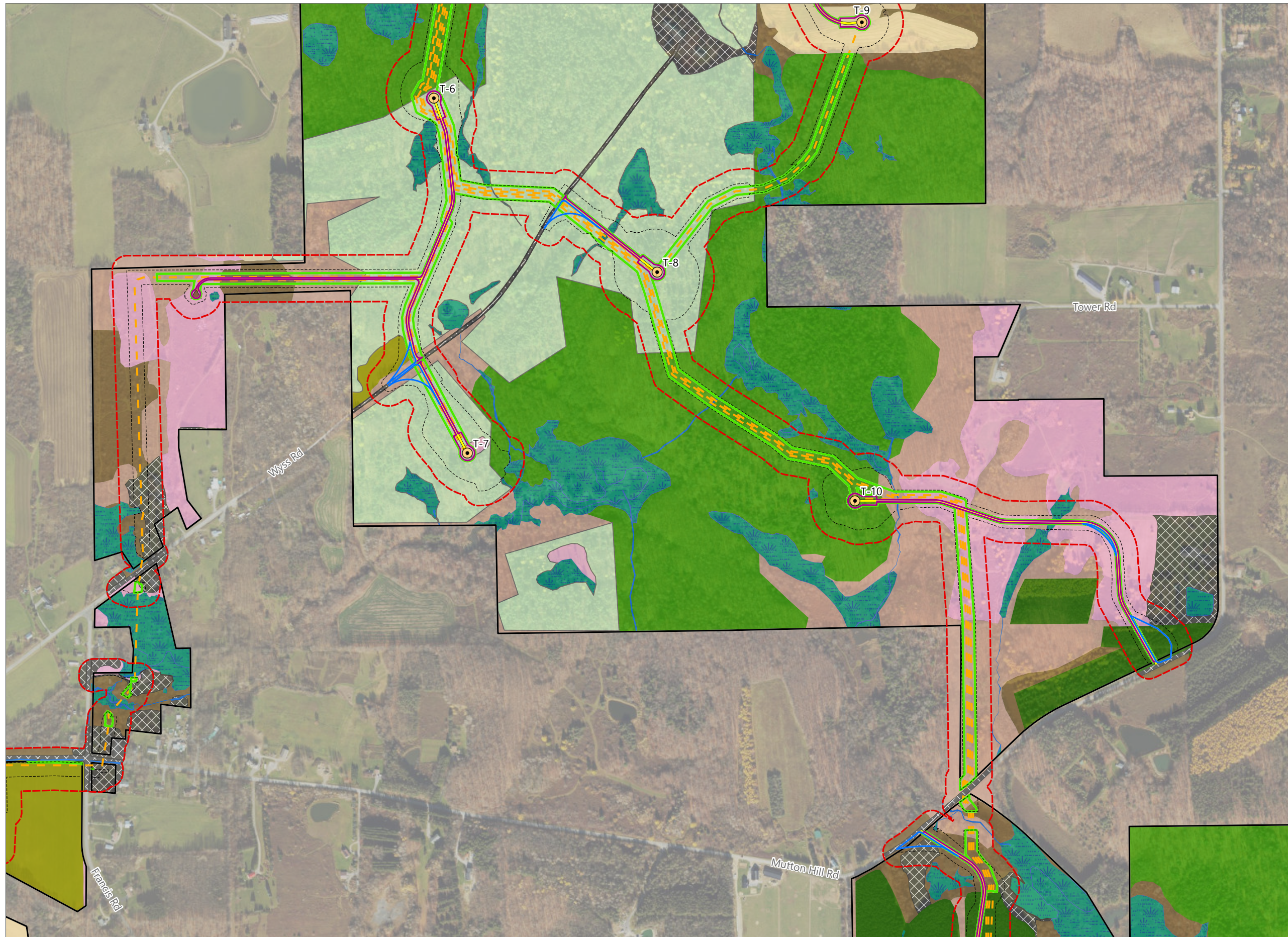
- Ecological Cover Type**
- Developed/Disturbed
 - Cropland/Field Crops
 - Cropland/Row Crops
 - Pastureland
 - Stream
 - Wetland
 - Beech-Maple Mesic Forest
 - Successional Northern Hardwoods
 - Successional Old Field
 - Successional Shrubland
 - Successional Spruce/Fir Plantation
- Facility Components**
- Wind Turbine
 - Access Road
 - Collection Line
 - Collection Substation
 - POI Substation
 - Laydown Yard
 - Limit of Impervious Surface
 - Limit of Vegetation Management
 - Limit of Disturbance
 - Temporary Turning Improvement
 - Plant Community Study Area
 - Facility Site



Sheet 3 of 12



Prepared February 5, 2024
Basemap: USDA NAIP '2022 New York 60cm' orthoimagery map service

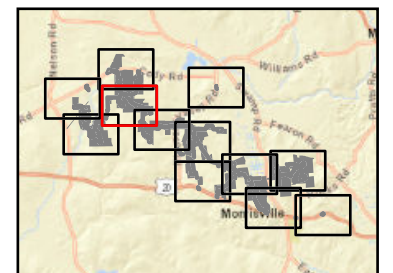


Hoffman Falls Wind

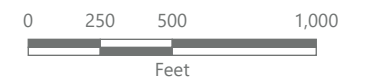
Towns of Eaton, Fenner, Nelson and Smithfield, Madison County, New York

**94-c Permit Application
Matter No. 23-00038**

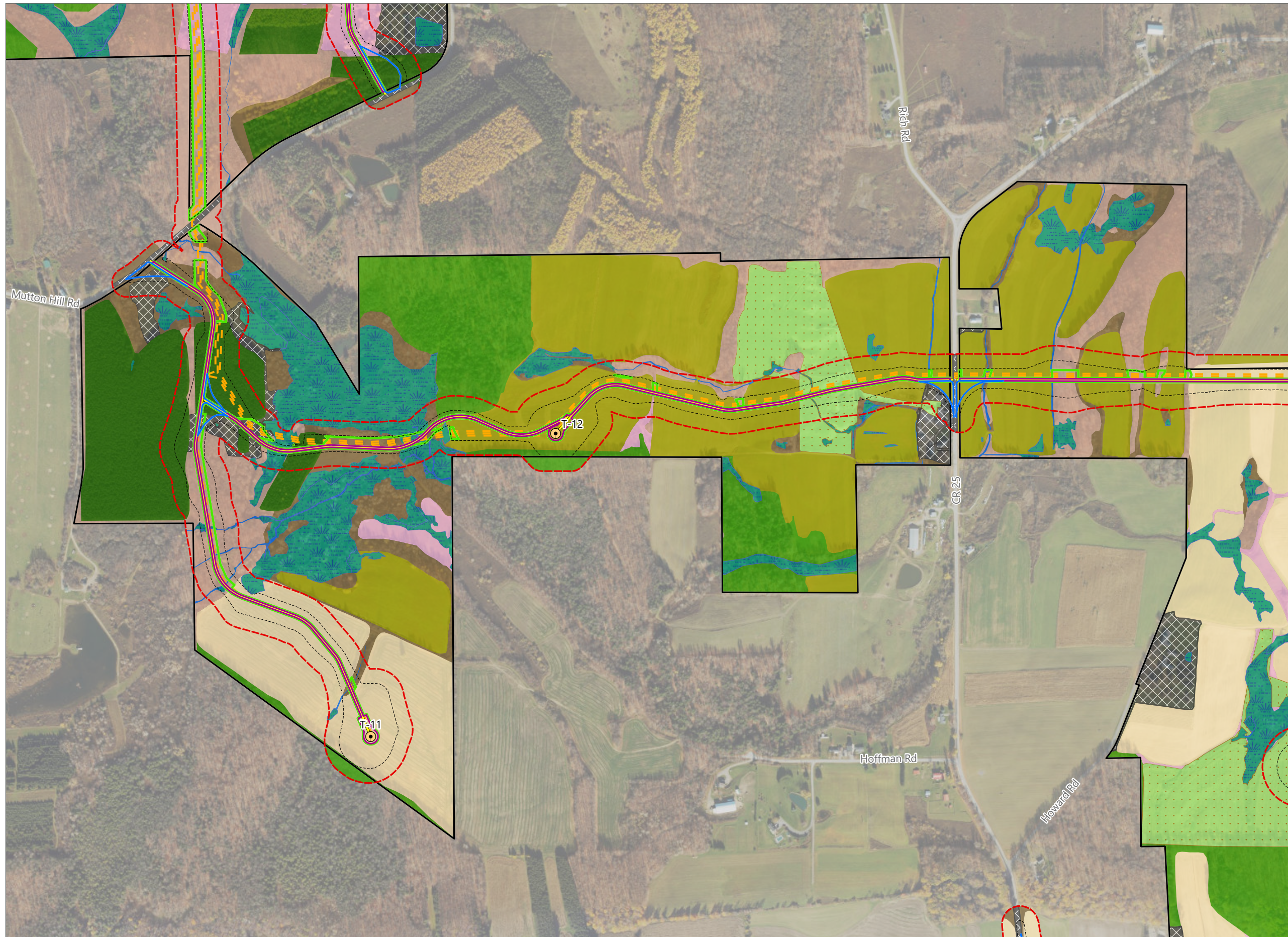
- Ecological Cover Type**
- Developed/Disturbed
 - Cropland/Field Crops
 - Cropland/Row Crops
 - Stream
 - Wetland
 - Beech-Maple Mesic Forest
 - Spruce/Fir Plantation
 - Successional Northern Hardwoods
 - Successional Old Field
 - Successional Shrubland
 - Successional Spruce/Fir Plantation
- Facility Components**
- Wind Turbine
 - ADLS Tower
 - Access Road
 - Collection Line
 - Limit of Impervious Surface
 - Limit of Vegetation Management
 - Limit of Disturbance
 - Temporary Turning Improvement
 - Plant Community Study Area
 - Facility Site



Sheet 4 of 12



Prepared February 5, 2024
Basemap: USDA NAIP "2022 New York 60cm" orthoimagery map service

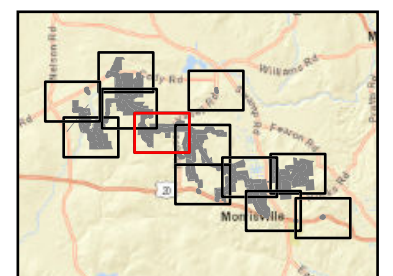


Hoffman Falls Wind

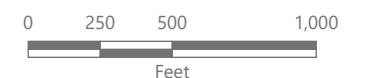
Towns of Eaton, Fenner, Nelson and Smithfield, Madison County, New York

94-c Permit Application
Matter No. 23-00038

- Ecological Cover Type**
- Developed/Disturbed
 - Cropland/Field Crops
 - Cropland/Row Crops
 - Pastureland
 - Stream
 - Wetland
 - Beech-Maple Mesic Forest
 - Spruce/Fir Plantation
 - Successional Northern Hardwoods
 - Successional Old Field
 - Successional Shrubland
- Facility Components**
- Wind Turbine
 - Permanent MET Tower
 - Access Road
 - Collection Line
 - Limit of Impervious Surface
 - Limit of Vegetation Management
 - Limit of Disturbance
 - Temporary Turning Improvement
 - Plant Community Study Area
 - Facility Site



Sheet 5 of 12



Prepared February 5, 2024
Basemap: USDA NAIP '2022 New York 60cm' orthoimagery map service

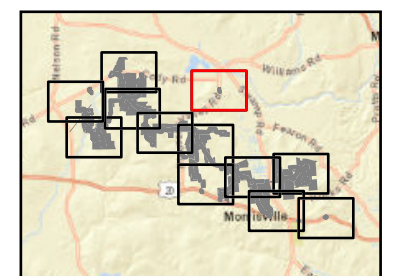


Hoffman Falls Wind

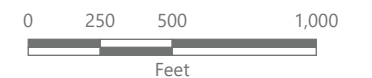
Towns of Eaton, Fenner, Nelson and Smithfield, Madison County, New York

**94-c Permit Application
Matter No. 23-00038**

- Ecological Cover Type
- Developed/Disturbed
 - Cropland/Field Crops
 - Successional Old Field
 - Limit of Disturbance
 - Temporary Turning Improvement
 - Plant Community Study Area



Sheet 6 of 12



Prepared February 5, 2024
Basemap: USDA NAIP "2022 New York 60cm" orthoimagery map service

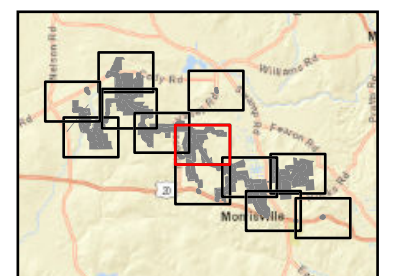


Hoffman Falls Wind

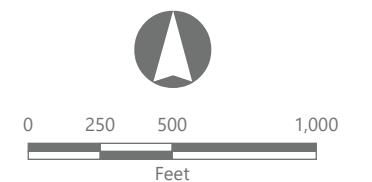
Towns of Eaton, Fenner, Nelson and Smithfield, Madison County, New York

**94-c Permit Application
Matter No. 23-00038**

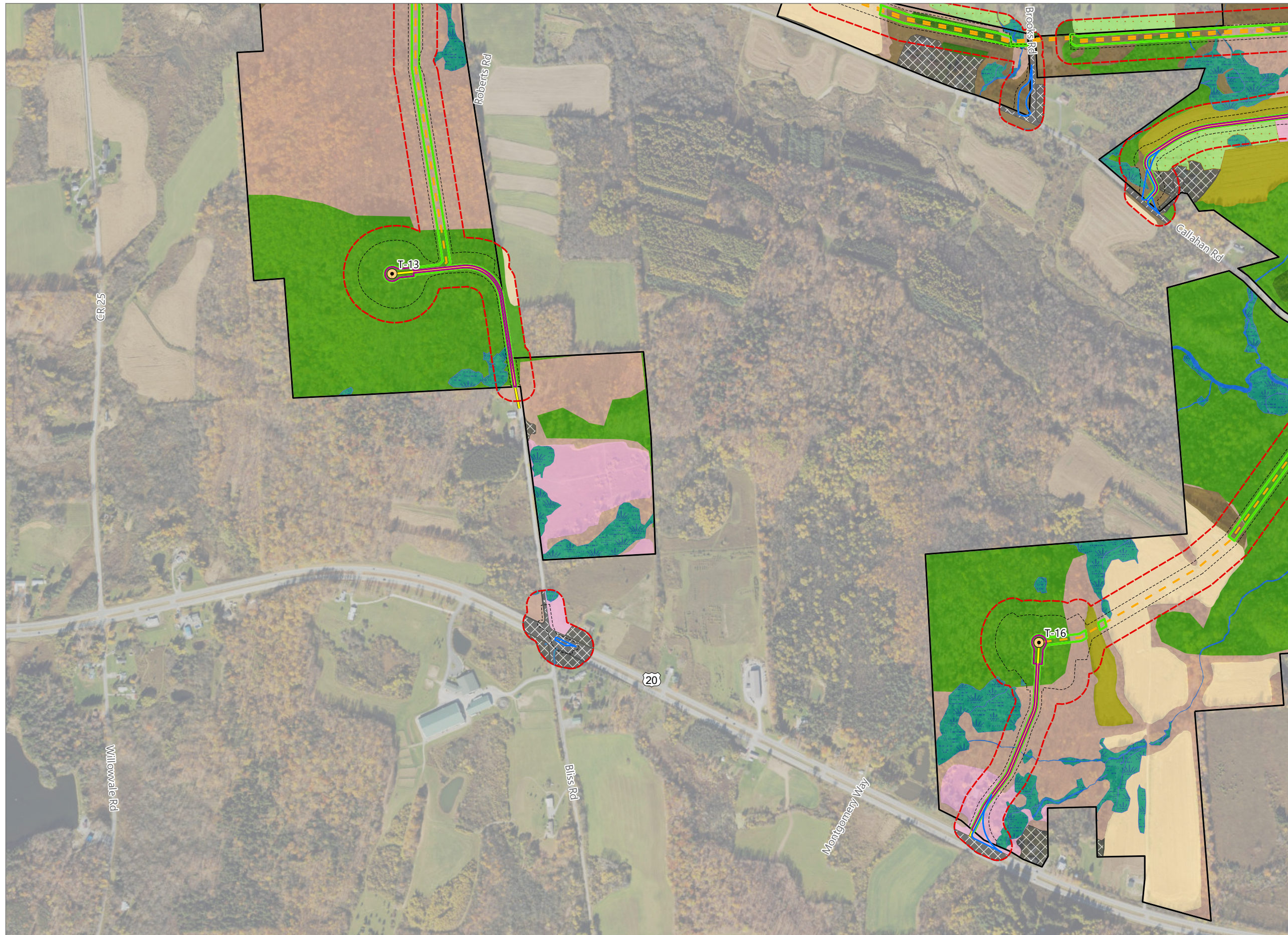
- Ecological Cover Type**
- Developed/Disturbed
 - Cropland/Field Crops
 - Cropland/Row Crops
 - Pastureland
 - Stream
 - Wetland
 - Beech-Maple Mesic Forest
 - Successional Northern Hardwoods
 - Successional Old Field
 - Successional Shrubland
- Facility Components**
- Wind Turbine
 - Permanent MET Tower
 - Access Road
 - Collection Line
 - Limit of Impervious Surface
 - Limit of Vegetation Management
 - Limit of Disturbance
 - Temporary Turning Improvement
 - Plant Community Study Area
 - Facility Site



Sheet 7 of 12



Prepared February 5, 2024
Basemap: USDA NAIP "2022 New York 60cm" orthoimagery map service

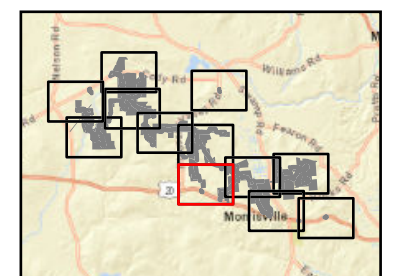


Hoffman Falls Wind

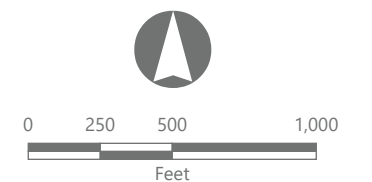
Towns of Eaton, Fenner, Nelson and Smithfield, Madison County, New York

**94-c Permit Application
Matter No. 23-00038**

- Ecological Cover Type**
- Developed/Disturbed
 - Cropland/Field Crops
 - Cropland/Row Crops
 - Pastureland
 - Stream
 - Wetland
 - Beech-Maple Mesic Forest
 - Spruce/Fir Plantation
 - Successional Northern Hardwoods
 - Successional Old Field
 - Successional Shrubland
- Facility Components**
- Wind Turbine
 - Access Road
 - Collection Line
 - Limit of Impervious Surface
 - Limit of Vegetation Management
 - Limit of Disturbance
 - Temporary Turning Improvement
 - Plant Community Study Area
 - Facility Site



Sheet 8 of 12



Prepared February 5, 2024
Basemap: USDA NAIP "2022 New York 60cm" orthoimagery map service

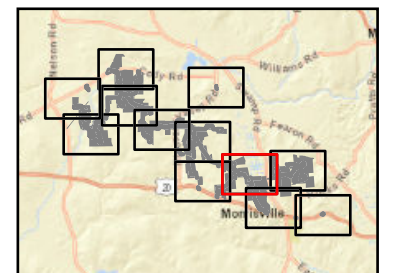


Hoffman Falls Wind

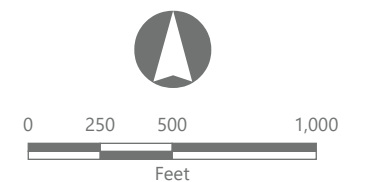
Towns of Eaton, Fenner, Nelson and Smithfield, Madison County, New York

**94-c Permit Application
Matter No. 23-00038**

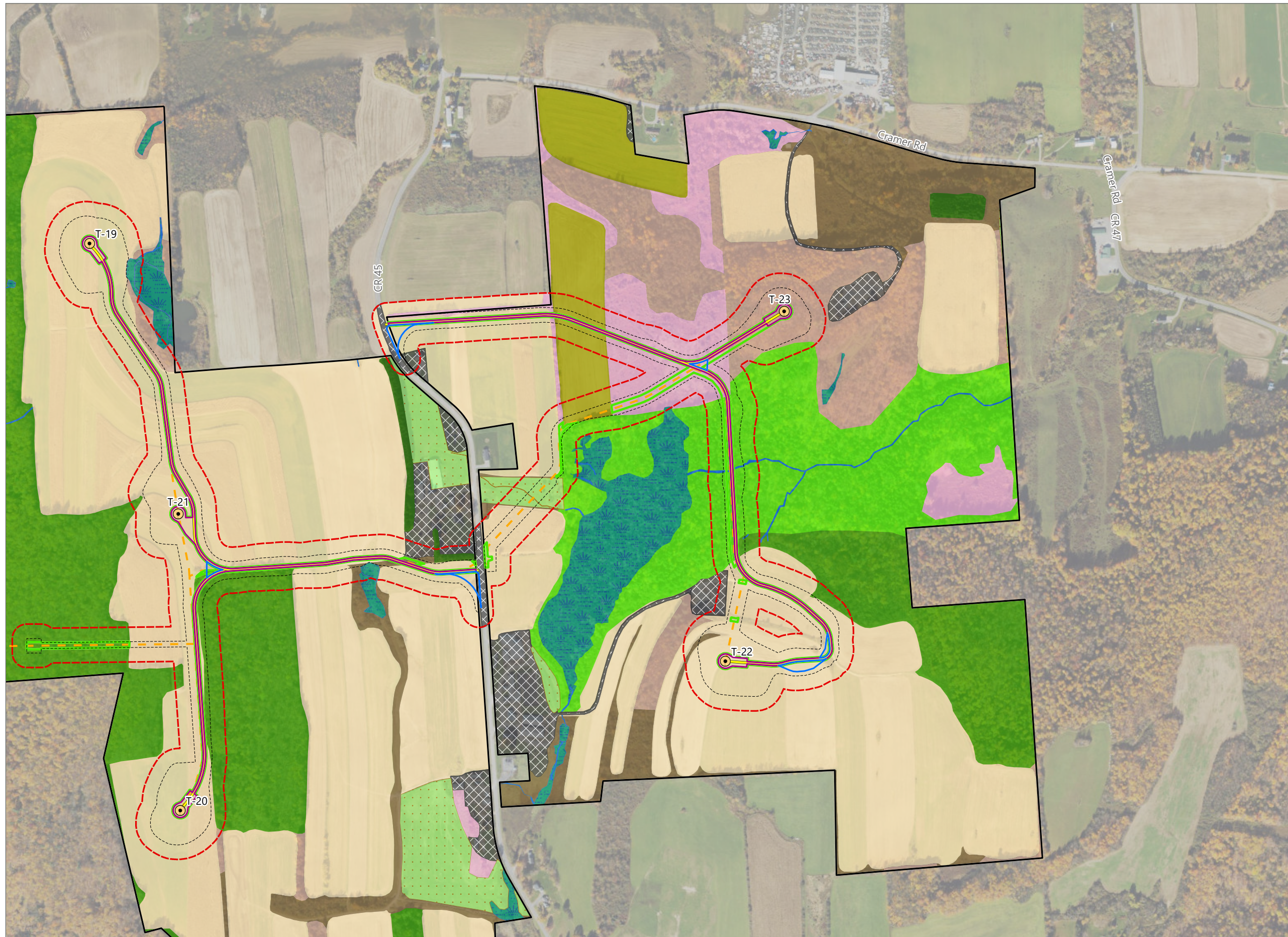
- Ecological Cover Type**
- Developed/Disturbed
 - Cropland/Field Crops
 - Cropland/Row Crops
 - Pastureland
 - Stream
 - Wetland
 - Beech-Maple Mesic Forest
 - Spruce/Fir Plantation
 - Successional Northern Hardwoods
 - Successional Old Field
 - Successional Shrubland
- Facility Components**
- Wind Turbine
 - Access Road
 - Collection Line
 - Laydown Yard
 - Limit of Impervious Surface
 - Limit of Vegetation Management
 - Limit of Disturbance
 - Temporary Turning Improvement
 - Plant Community Study Area
 - Facility Site



Sheet 9 of 12



Prepared February 5, 2024
Basemap: USDA NAIP "2022 New York 60cm" orthoimagery map service

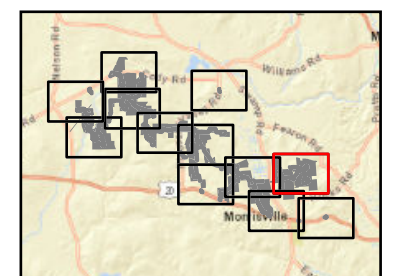


Hoffman Falls Wind

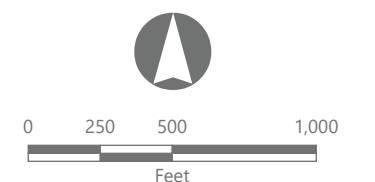
Towns of Eaton, Fenner, Nelson and Smithfield, Madison County, New York

**94-c Permit Application
Matter No. 23-00038**

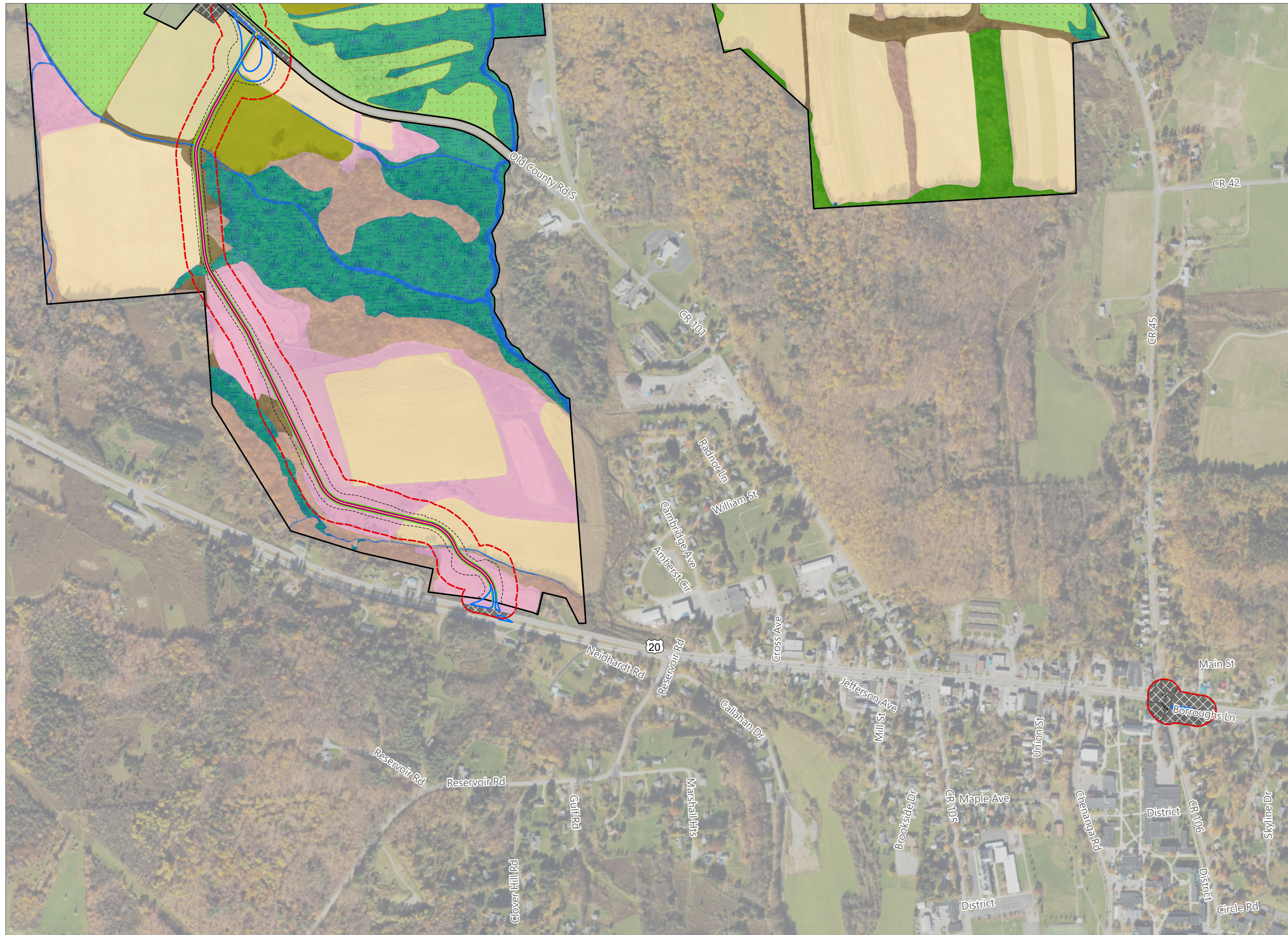
- Ecological Cover Type**
- Developed/Disturbed
 - Cropland/Field Crops
 - Cropland/Row Crops
 - Pastureland
 - Stream
 - Wetland
 - Hemlock-Northern Hardwood Forest
 - Beech-Maple Mesic Forest
 - Spruce/Fir Plantation
 - Successional Northern Hardwoods
 - Successional Old Field
 - Successional Shrubland
- Facility Components**
- Wind Turbine
 - Access Road
 - Collection Line
 - Limit of Impervious Surface
 - Limit of Vegetation Management
 - Limit of Disturbance
 - Temporary Turning Improvement
 - Plant Community Study Area
 - Facility Site



Sheet 10 of 12



Prepared February 5, 2024
Basemap: USDA NAIP '2022 New York 60cm' orthoimagery map service

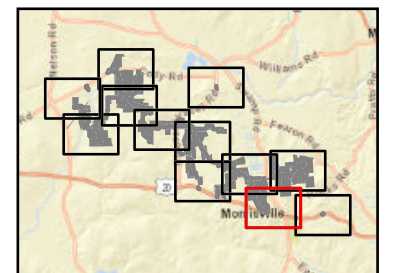


Hoffman Falls Wind

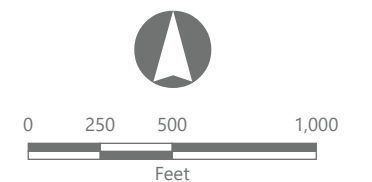
Towns of Eaton, Fenner, Nelson and Smithfield, Madison County, New York

**94-c Permit Application
Matter No. 23-00038**

- Ecological Cover Type**
- Developed/Disturbed
 - Cropland/Field Crops
 - Cropland/Row Crops
 - Pastureland
 - Stream
 - Wetland
 - Beech-Maple Mesic Forest
 - Successional Northern Hardwoods
 - Successional Old Field
 - Successional Shrubland
- Facility Components**
- Access Road
 - Limit of Impervious Surface
 - Limit of Vegetation Management
 - Limit of Disturbance
 - Temporary Turning Improvement
 - Plant Community Study Area
 - Facility Site



Sheet 11 of 12



Prepared February 5, 2024
Basemap: USDA NAIP "2022 New York 60cm" orthoimagery map service

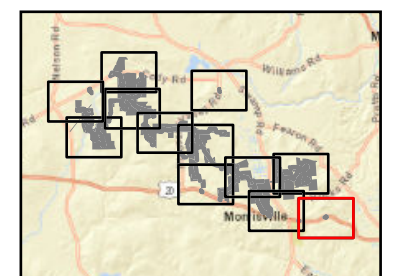


Hoffman Falls Wind

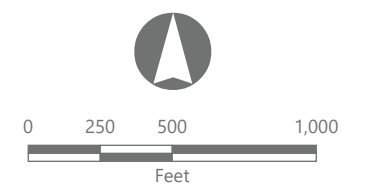
Towns of Eaton, Fenner, Nelson and Smithfield, Madison County, New York

**94-c Permit Application
Matter No. 23-00038**

- Ecological Cover Type
- Developed/Disturbed
 - Cropland/Row Crops
 - Successional Shrubland
 - Limit of Disturbance
 - Temporary Turning Improvement
 - Plant Community Study Area



Sheet 12 of 12



Prepared February 5, 2024
Basemap: USDA NAIP "2022 New York 60cm" orthoimagery map service