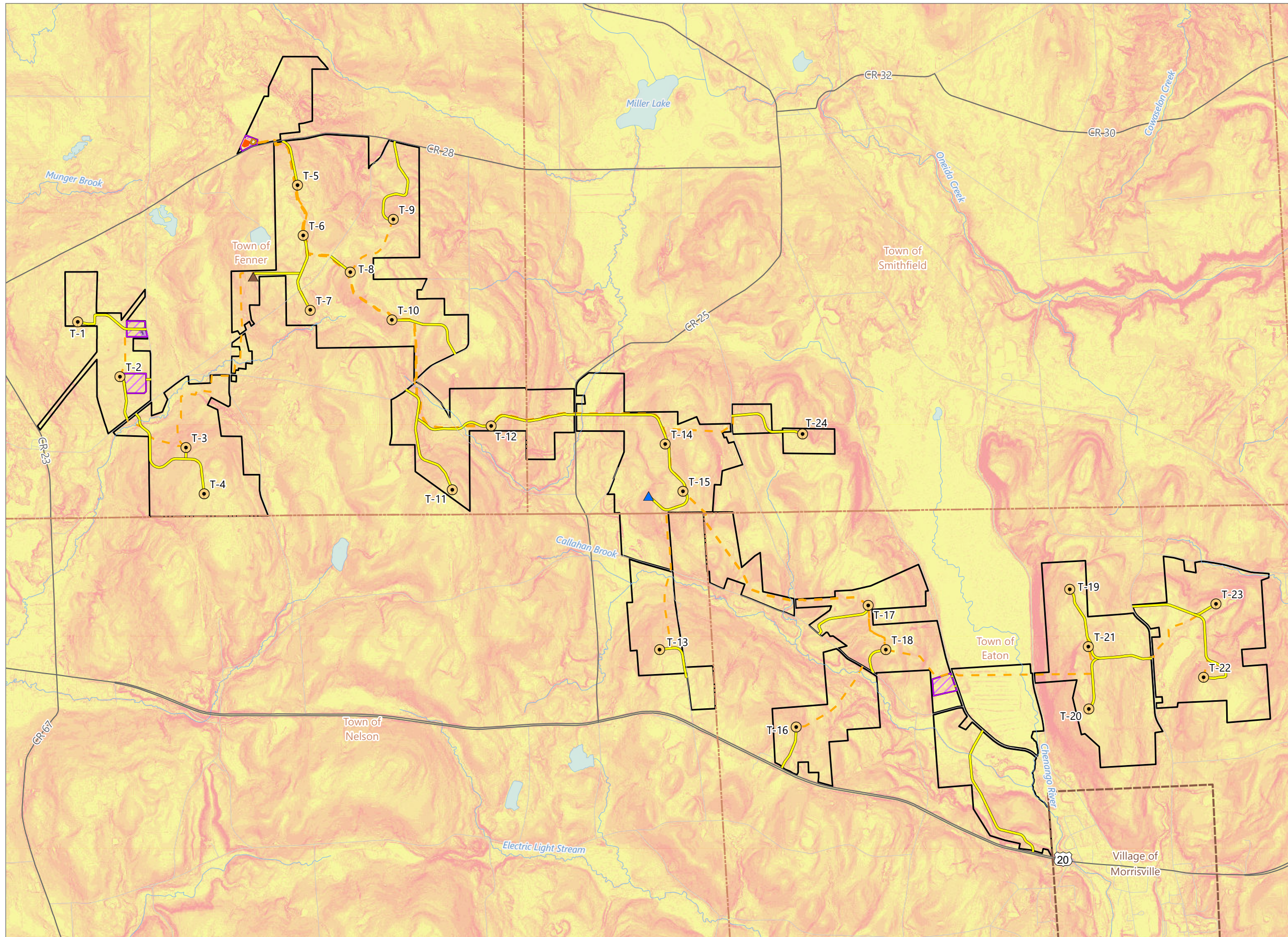


Figure 10-1. Slopes

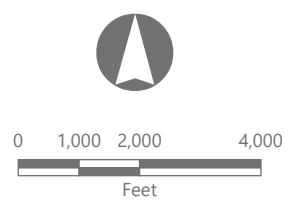


Hoffman Falls Wind

Towns of Eaton, Fenner, Nelson and Smithfield, Madison County, New York

**94-c Permit Application
Matter No. 23-00038**

- Slope**
- 0 - 3%
 - 3 - 8%
 - 8 - 15%
 - 15 - 25%
 - 25 - 35%
 - >35%
- Facility Components**
- Wind Turbine
 - ADLS Tower
 - Permanent MET Tower
 - Access Road
 - Collection Line
 - Collection Substation
 - POI Substation
 - O&M Building
 - Laydown Yard
 - Facility Site



Prepared February 5, 2024
 Basemap: Slope derived from 1-meter resolution NYSGPO Madison and Otsego 2015 DEM data.