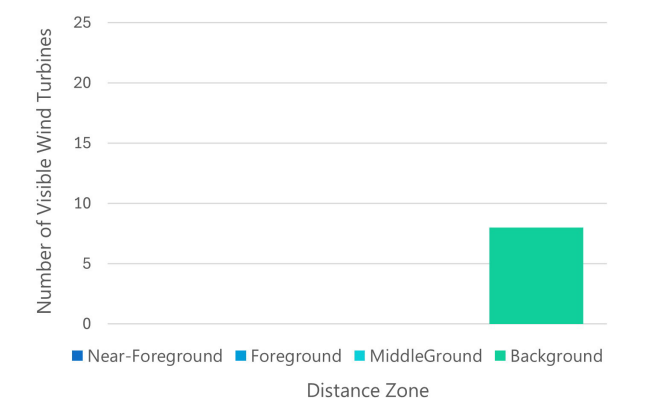


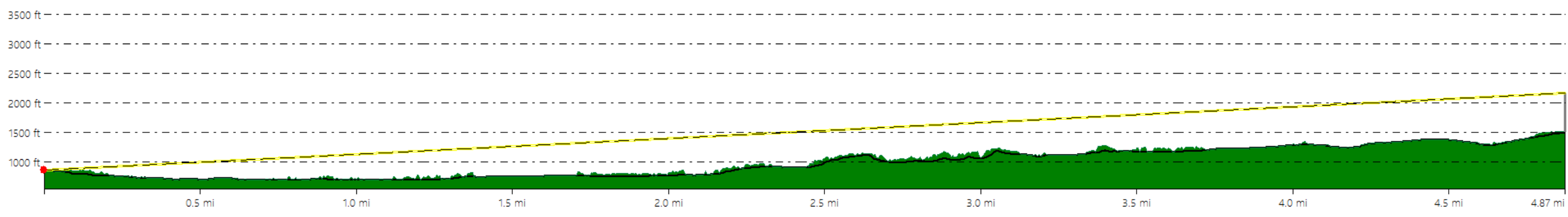
VSR ID # 123. Railroad Depot - East Hill Road

Municipality: Town of Stockbridge
 County: Madison
 VSR Category: Properties of Historic Significance
 Percent of Turbine Visibility within VSR*: 5.5%

*Calculated using only the area of the VSR that falls within the VSA

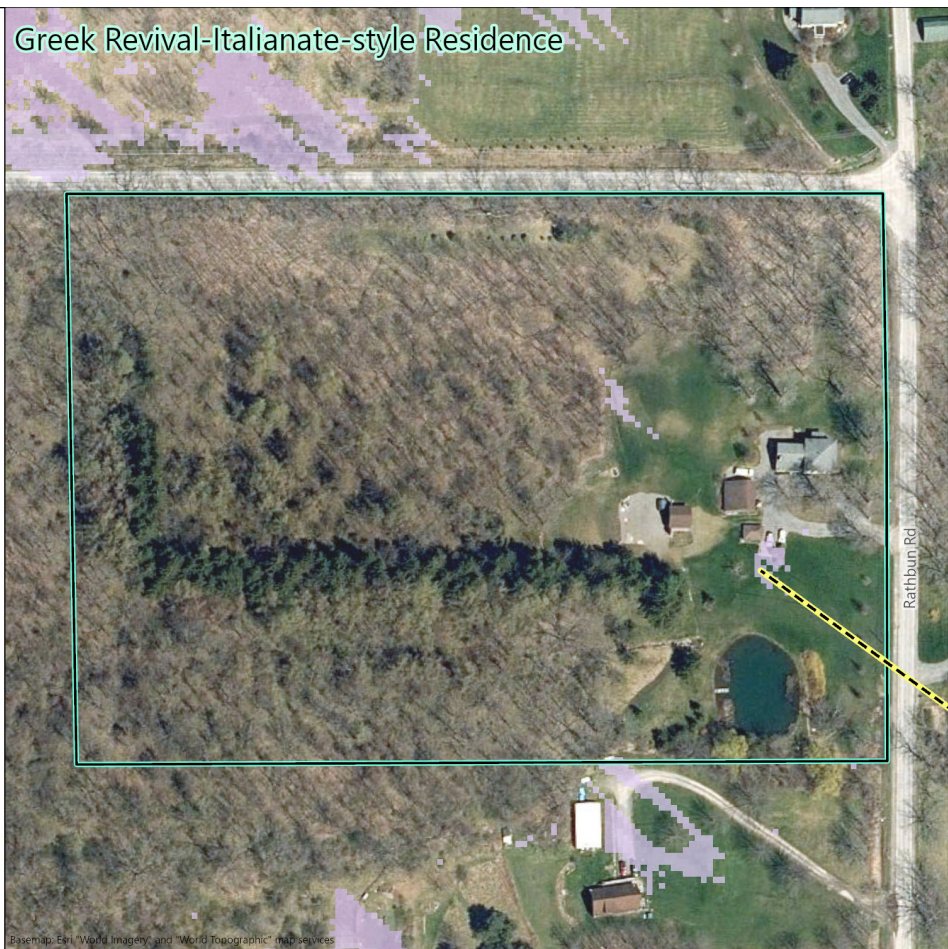
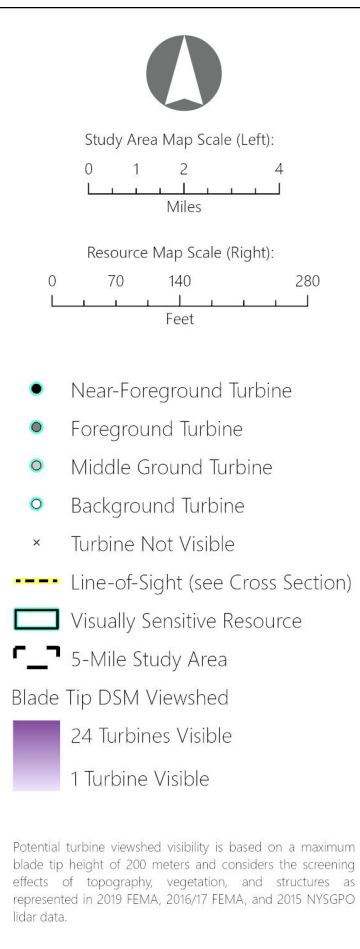
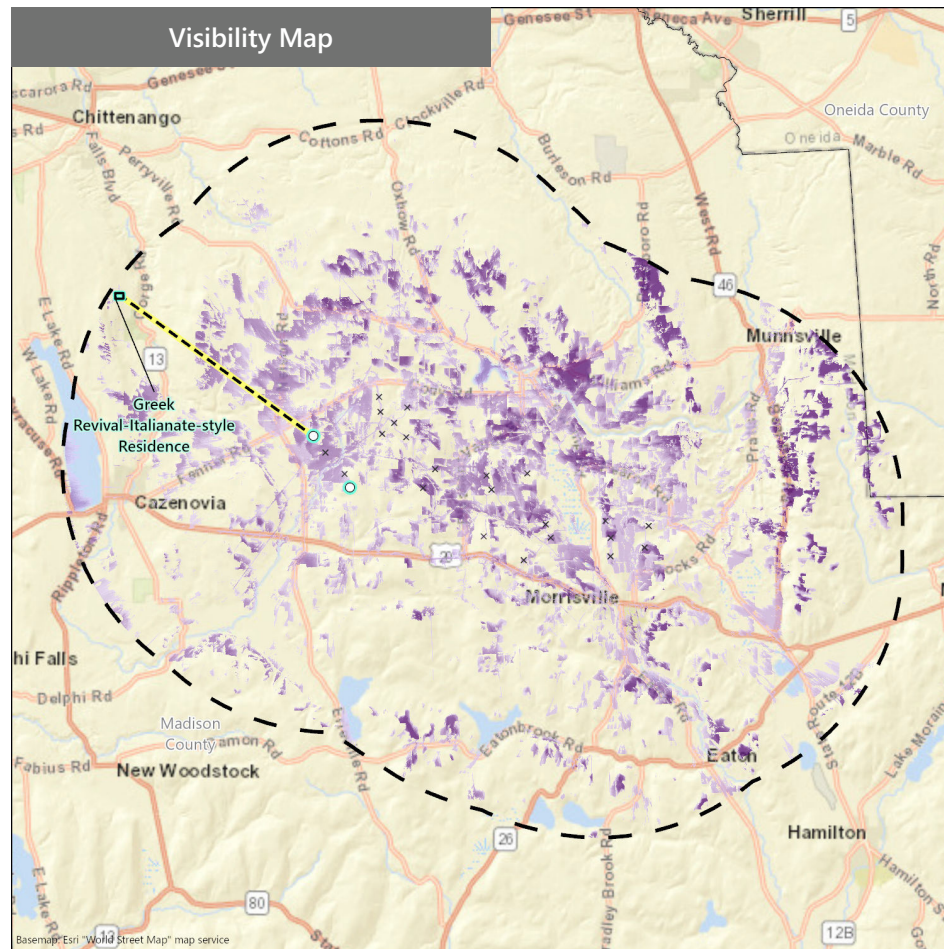


Line-of-Sight Cross Section



Hoffman Falls Wind Project
 Towns of Eaton, Fenner, Nelson, and Smithfield, Madison County, New York

Visual Impact Assessment
 Appendix 8-A



VSR ID # 124. Greek Revival-Italianate-style Residence

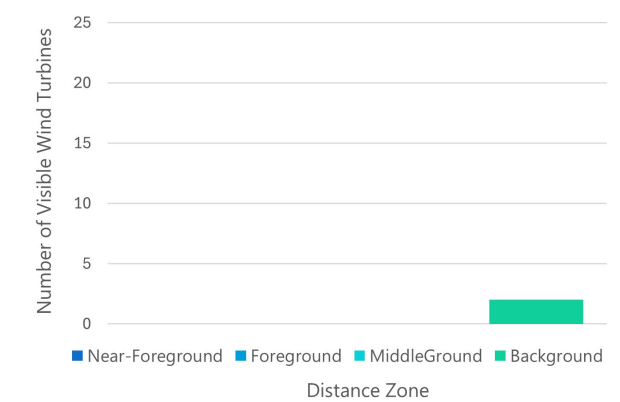
Municipality: Town of Cazenovia

County: Madison

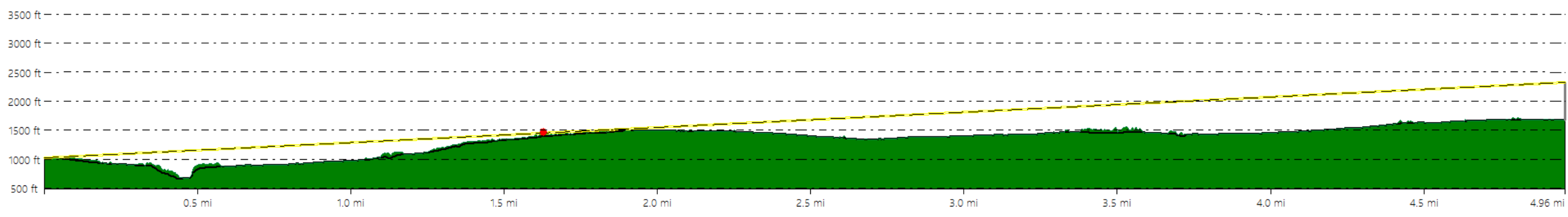
VSR Category: Properties of Historic Significance

Percent of Turbine Visibility within VSR*: 0.4%

*Calculated using only the area of the VSR that falls within the VSA

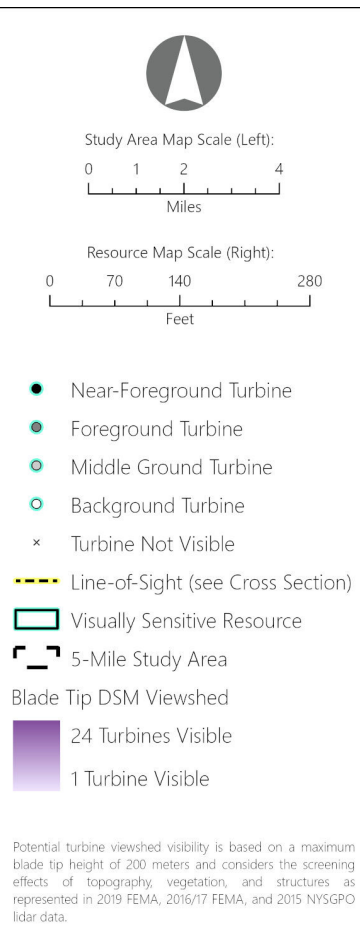
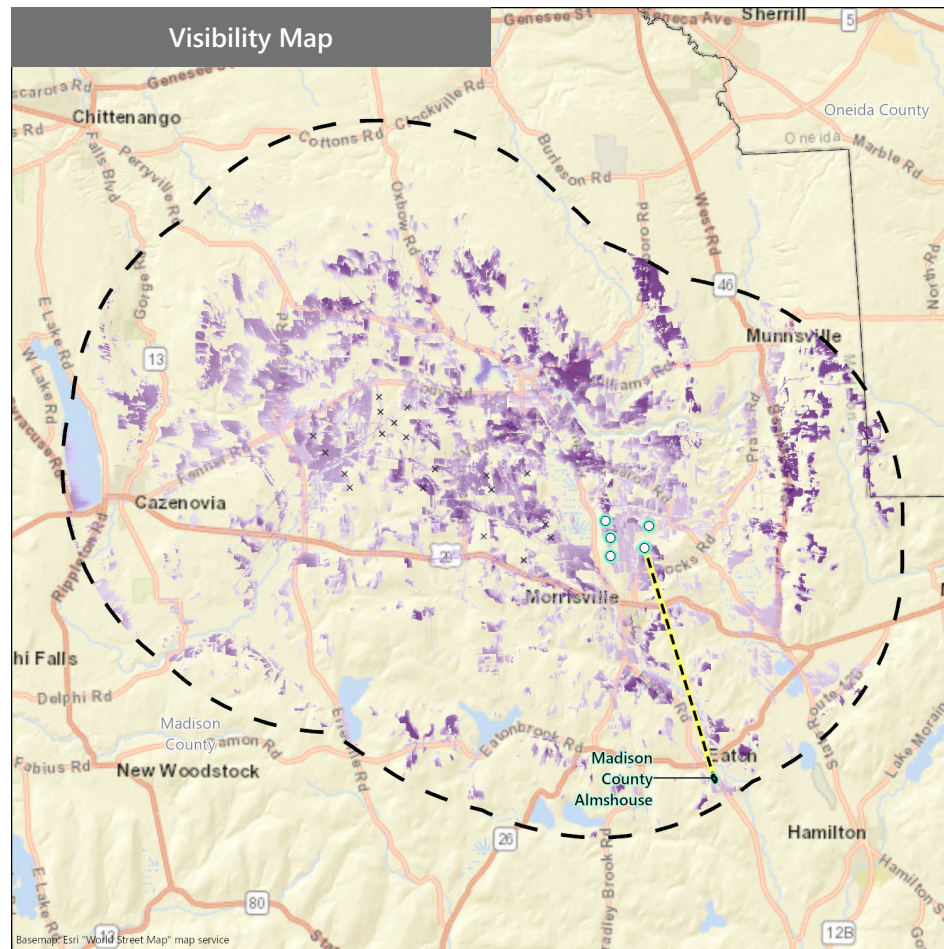


Line-of-Sight Cross Section



Hoffman Falls Wind Project
Towns of Eaton, Fenner, Nelson, and Smithfield, Madison County, New York

Visual Impact Assessment
Appendix 8-A



VSR ID # 125. Madison County Almshouse

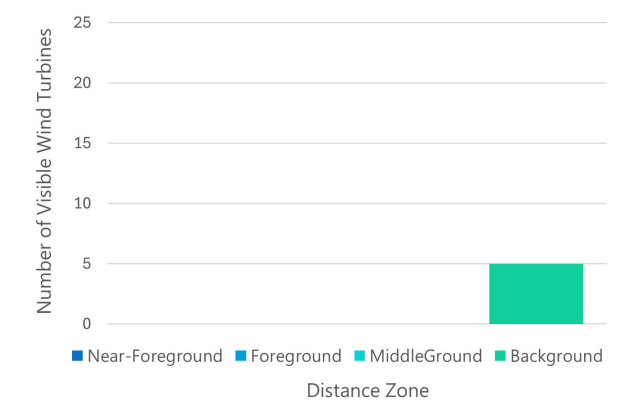
Municipality: Town of Eaton

County: Madison

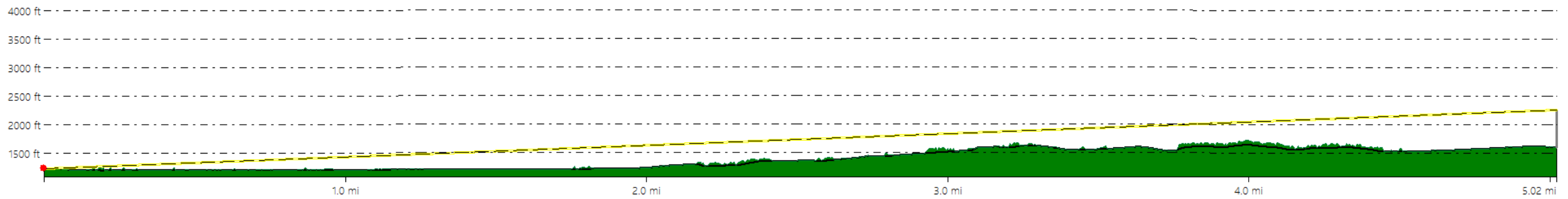
VSR Category: Properties of Historic Significance

Percent of Turbine Visibility within VSR*: 32.3%

*Calculated using only the area of the VSR that falls within the VSA

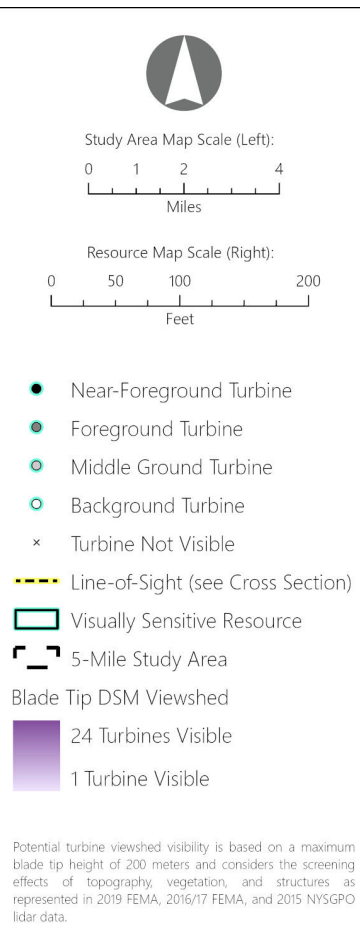
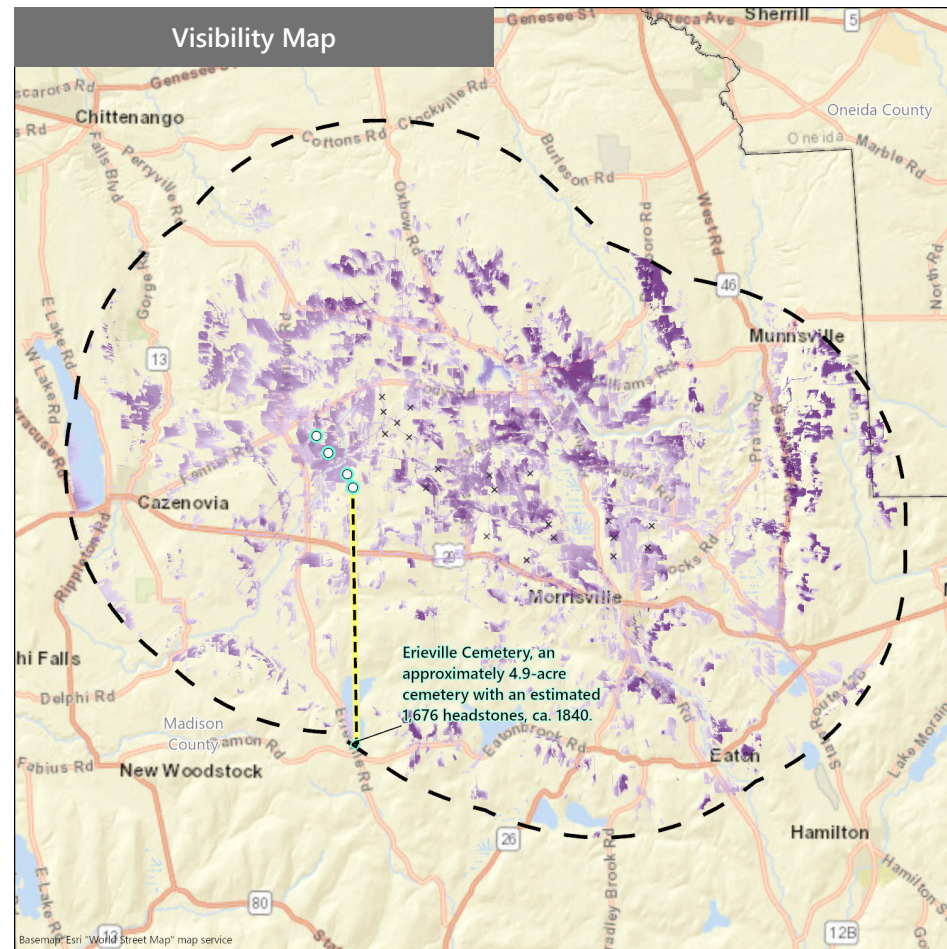


Line-of-Sight Cross Section



Hoffman Falls Wind Project
Towns of Eaton, Fenner, Nelson, and Smithfield, Madison County, New York

Visual Impact Assessment
Appendix 8-A



VSR ID # 126. Erieville Cemetery, an approximately 4.9-acre cemetery with an estimated 1,676 headstones, ca. 1840.

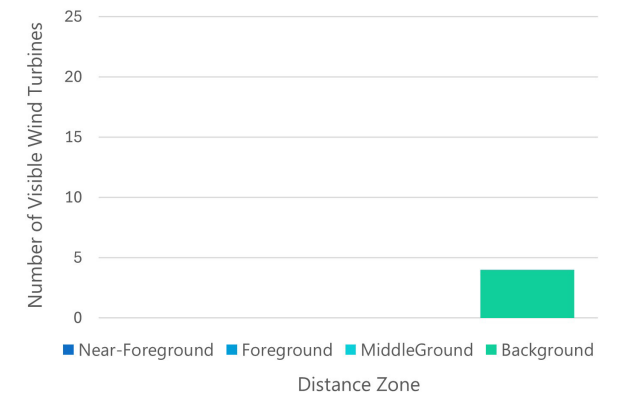
Municipality: Town of Nelson

County: Madison

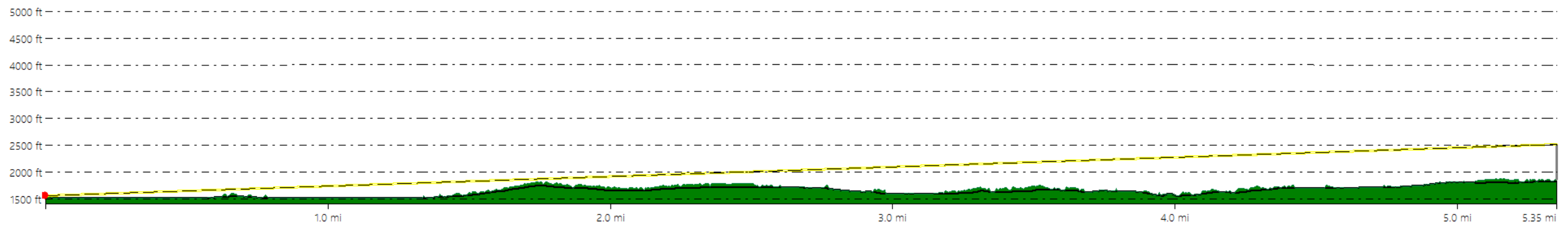
VSR Category: Properties of Historic Significance

Percent of Turbine Visibility within VSR*: 20.4%

*Calculated using only the area of the VSR that falls within the VSA

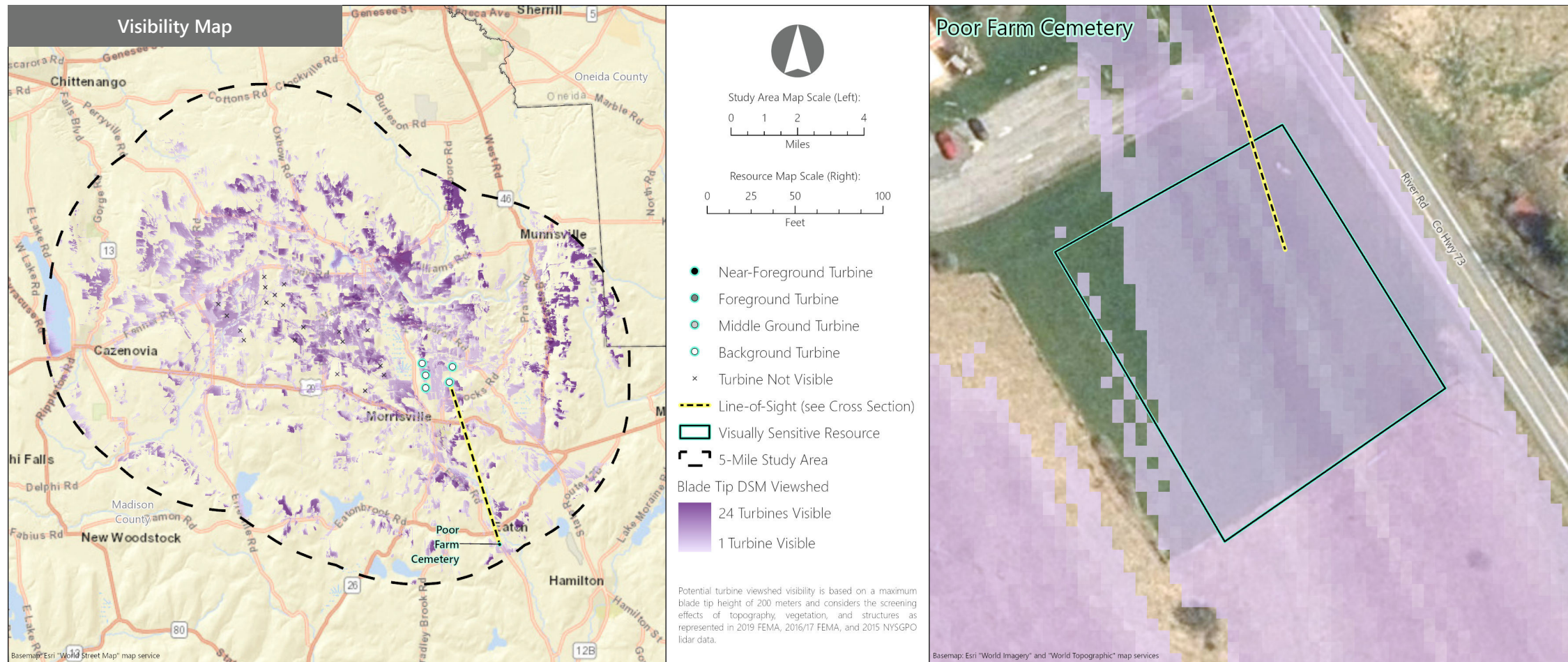


Line-of-Sight Cross Section



Hoffman Falls Wind Project
Towns of Eaton, Fenner, Nelson, and Smithfield, Madison County, New York

Visual Impact Assessment
Appendix 8-A



VSR ID # 127. Poor Farm Cemetery

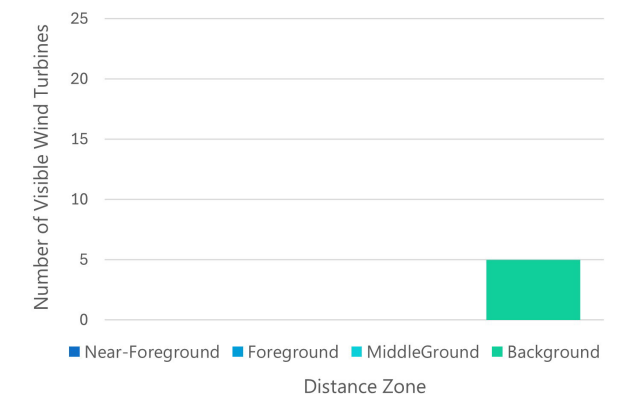
Municipality: Town of Eaton

County: Madison

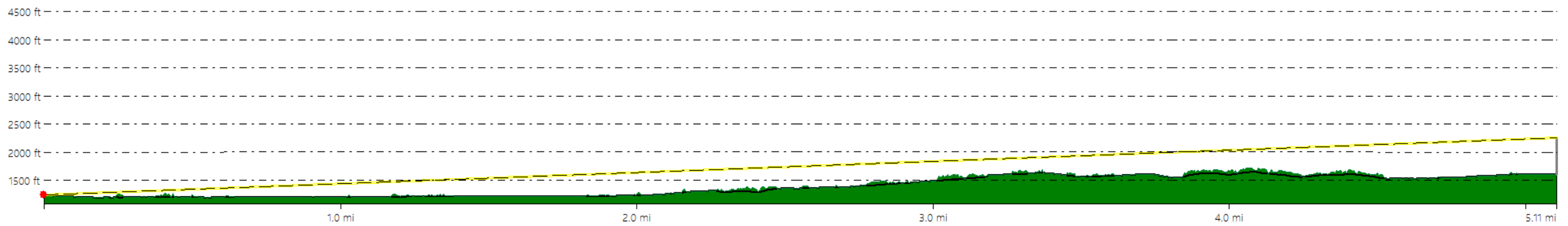
VSR Category: Properties of Historic Significance

Percent of Turbine Visibility within VSR*: 92.3%

*Calculated using only the area of the VSR that falls within the VSA

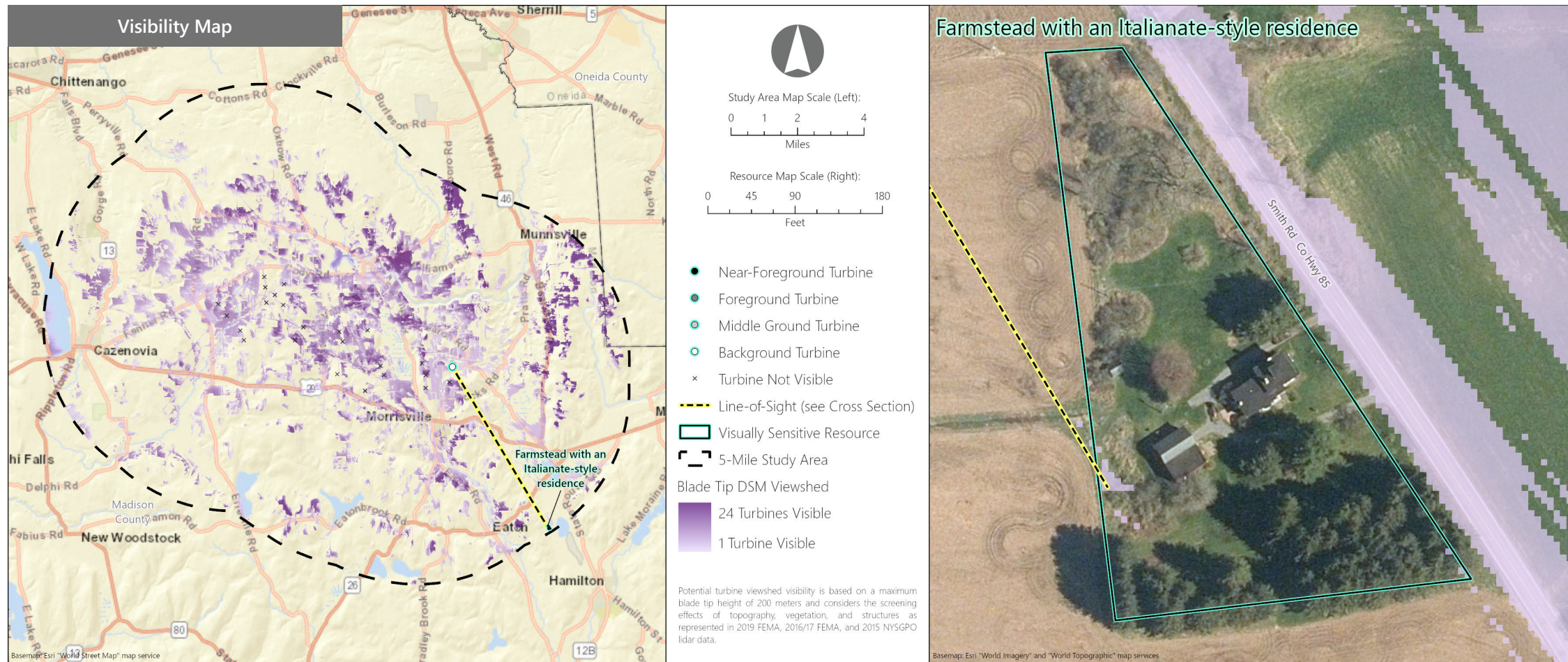


Line-of-Sight Cross Section



Hoffman Falls Wind Project
 Towns of Eaton, Fenner, Nelson, and Smithfield, Madison County, New York

Visual Impact Assessment
 Appendix 8-A



VSR ID # 128. Farmstead with an Italianate-style residence

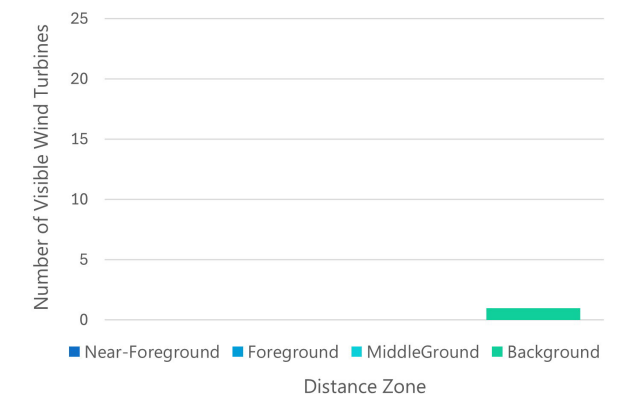
Municipality: Town of Eaton

County: Madison

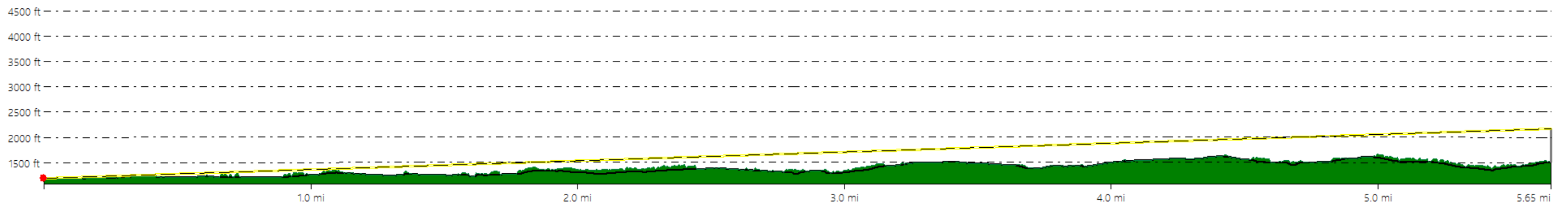
VSR Category: Properties of Historic Significance

Percent of Turbine Visibility within VSR*: 0.7%

*Calculated using only the area of the VSR that falls within the VSA



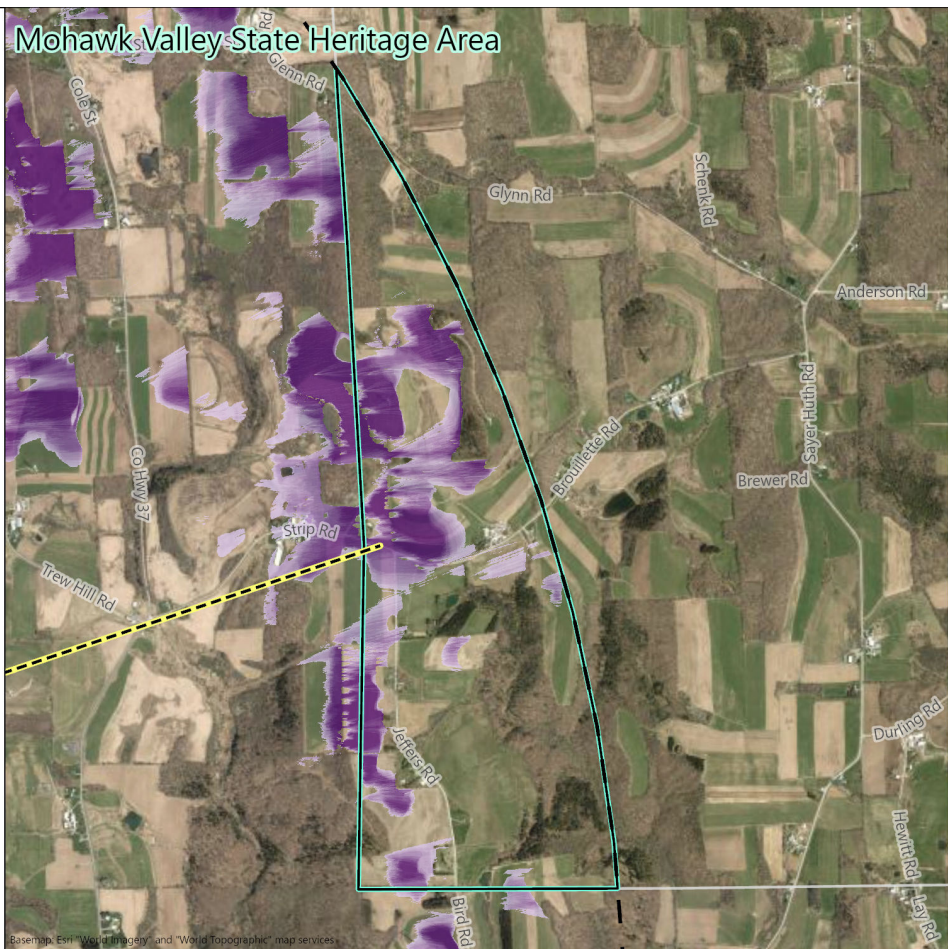
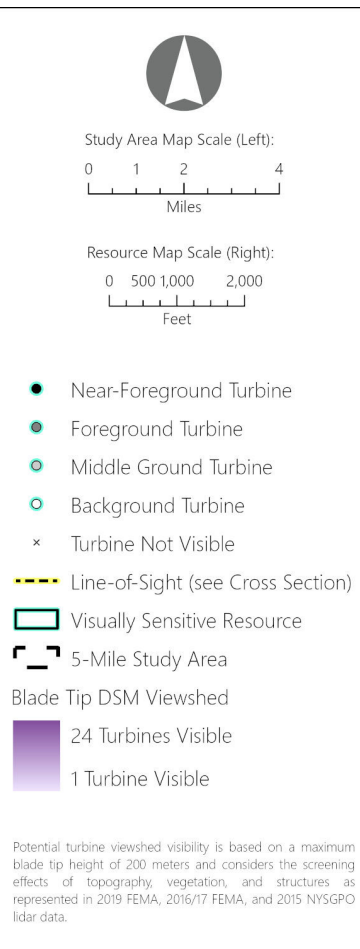
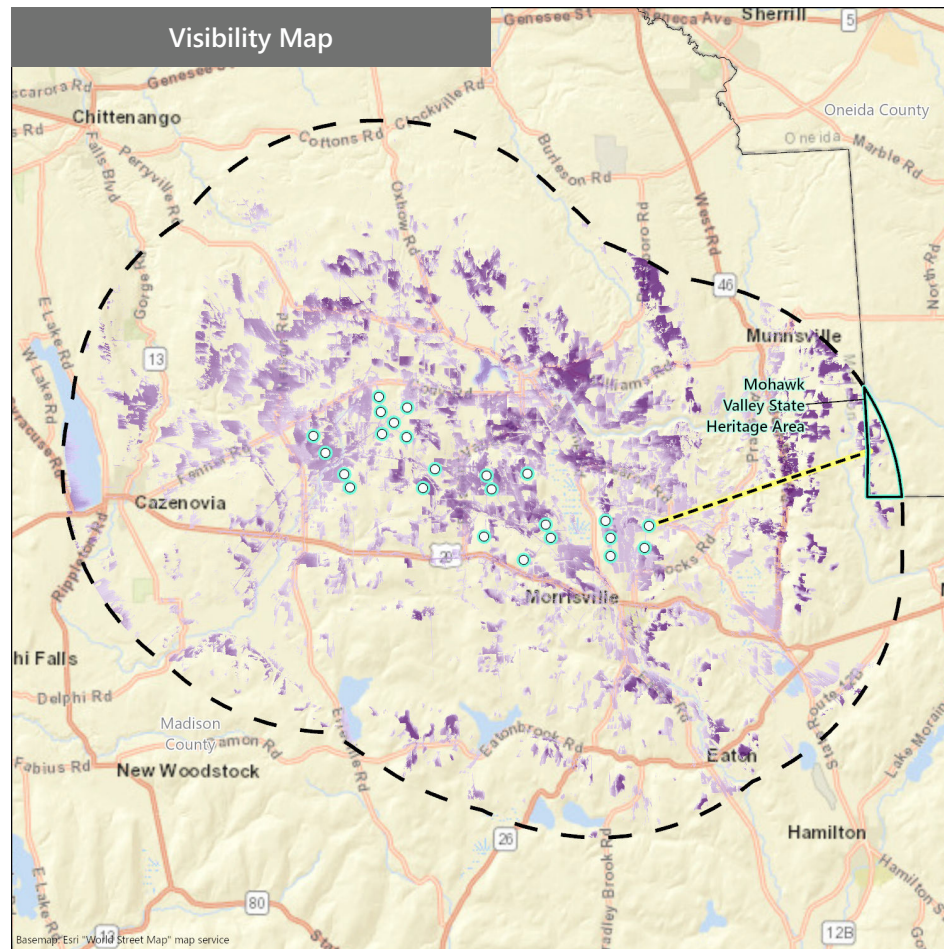
Line-of-Sight Cross Section



Hoffman Falls Wind Project

Towns of Eaton, Fenner, Nelson, and Smithfield, Madison County, New York

Visual Impact Assessment
Appendix 8-A



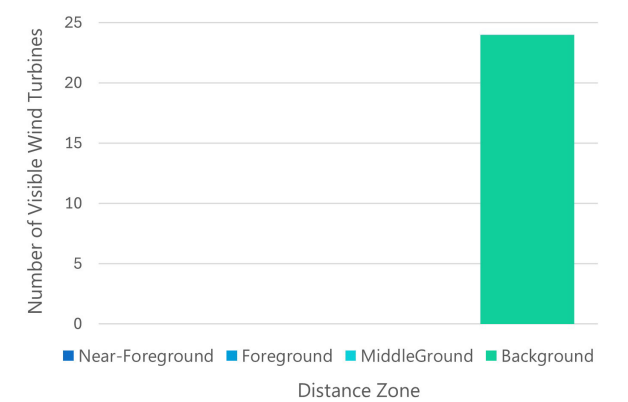
VSR ID # 133. Mohawk Valley State Heritage Area

Municipality: Towns of Augusta, Madison, and Stockbridge
County: Oneida and Madison

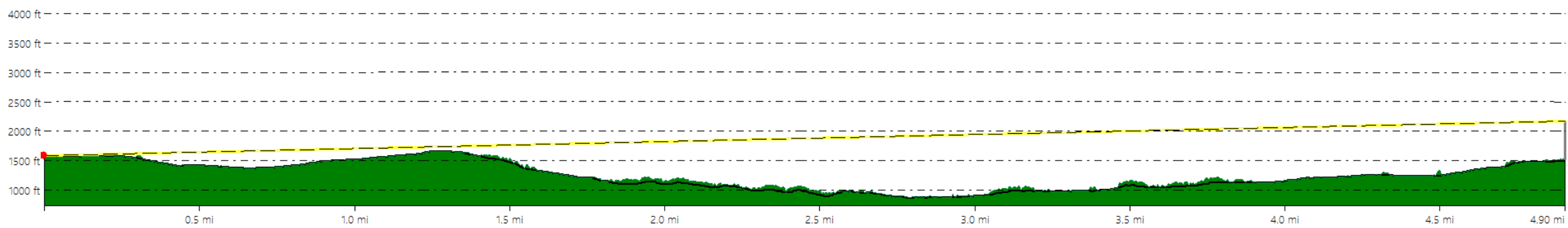
VSR Category: Heritage Areas

Percent of Turbine Visibility within VSR*: 23.8%

*Calculated using only the area of the VSR that falls within the VSA

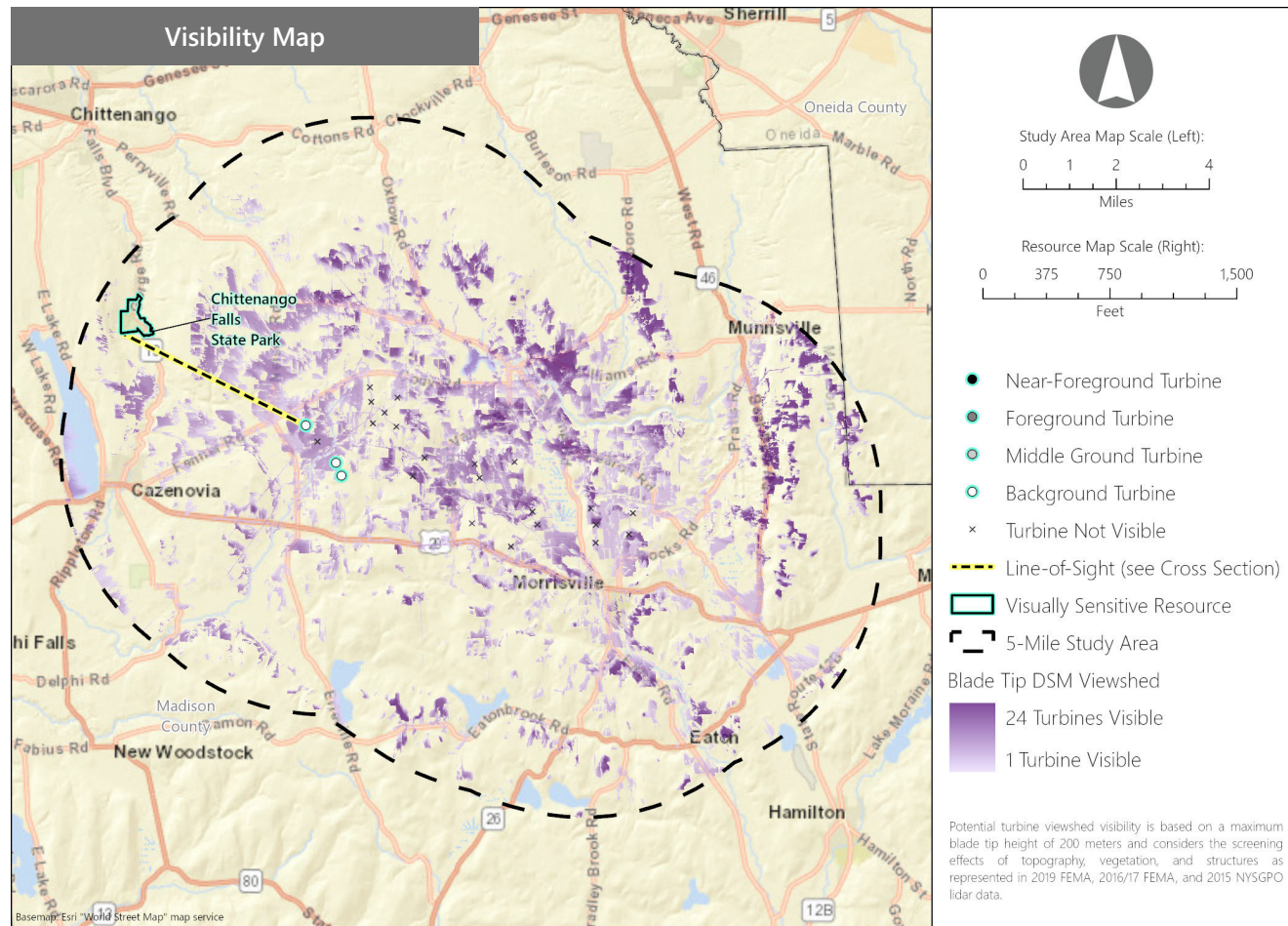


Line-of-Sight Cross Section



Hoffman Falls Wind Project
 Towns of Eaton, Fenner, Nelson, and Smithfield, Madison County, New York

Visual Impact Assessment
 Appendix 8-A



VSR ID # 134. Chittenango Falls State Park

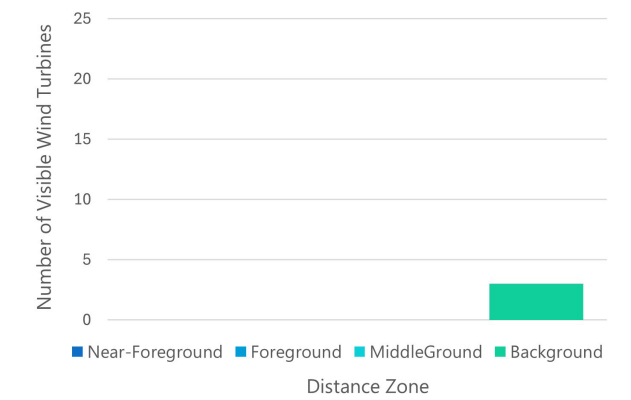
Municipality: Towns of Cazenovia and Fenner

County: Madison

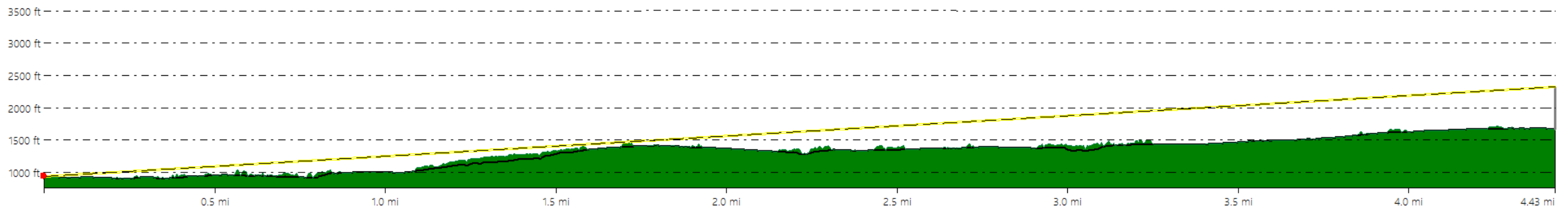
VSR Category: State Parks

Percent of Turbine Visibility within VSR*: 0.1%

*Calculated using only the area of the VSR that falls within the VSA



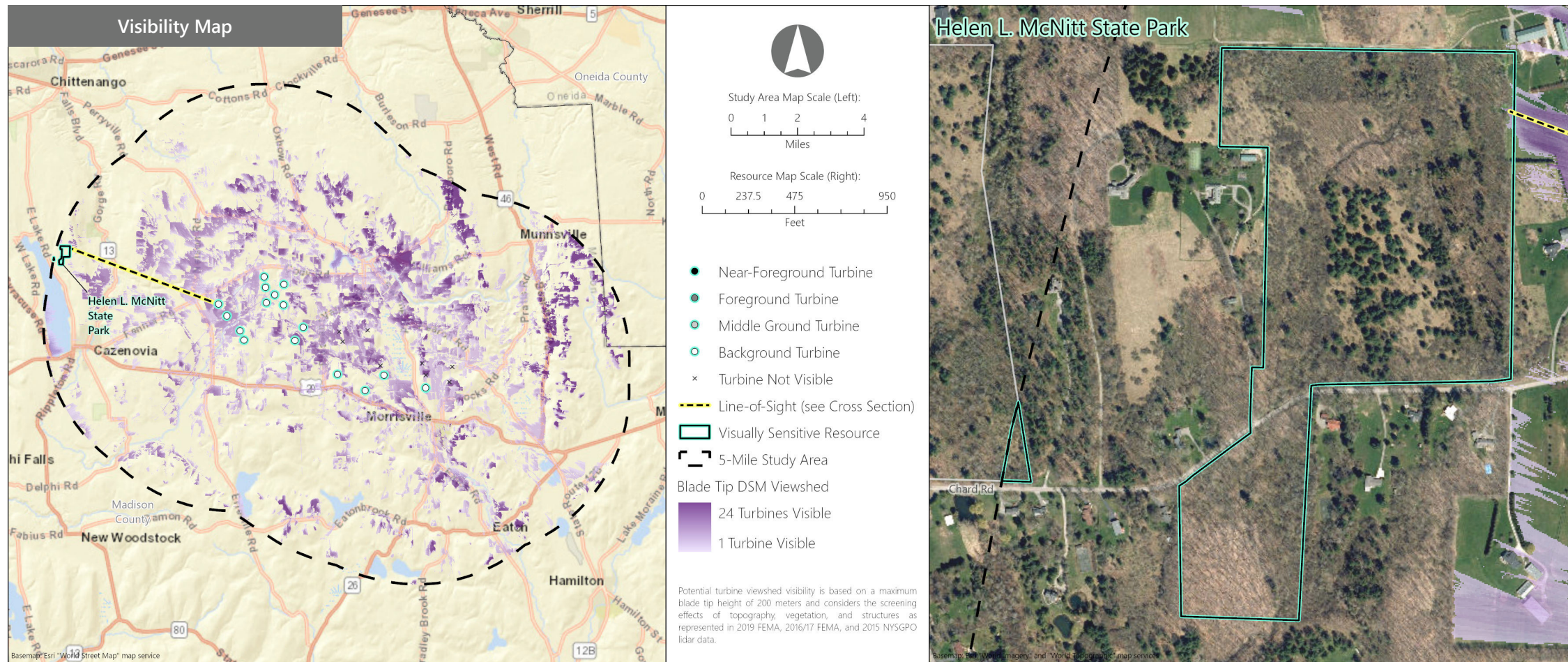
Line-of-Sight Cross Section



Hoffman Falls Wind Project

Towns of Eaton, Fenner, Nelson, and Smithfield, Madison County, New York

Visual Impact Assessment
Appendix 8-A



VSR ID # 135. Helen L. McNitt State Park

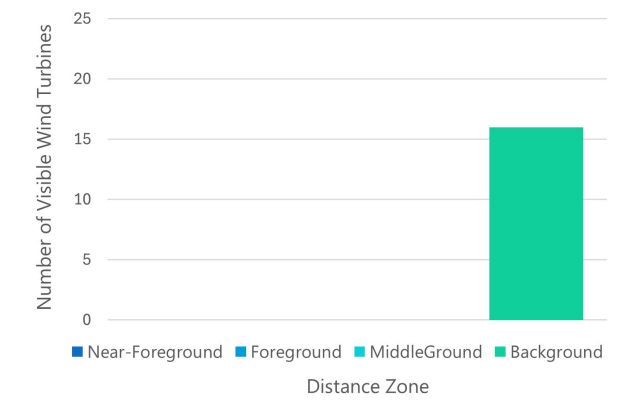
Municipality: Towns of Cazenovia and Fenner

County: Madison

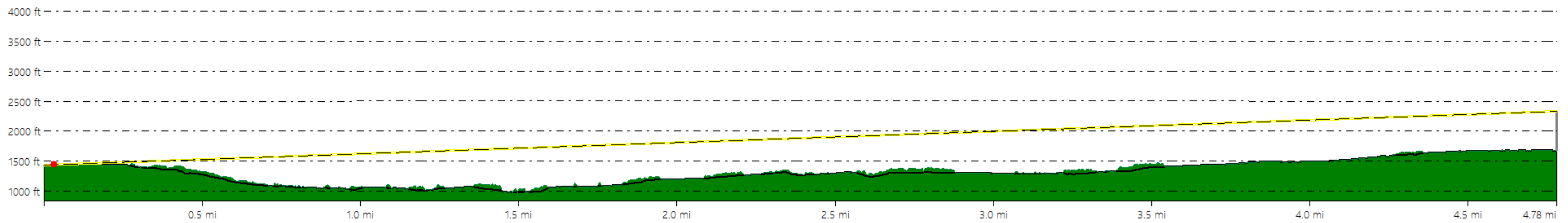
VSR Category: State Parks

Percent of Turbine Visibility within VSR*: 0.2%

*Calculated using only the area of the VSR that falls within the VSA



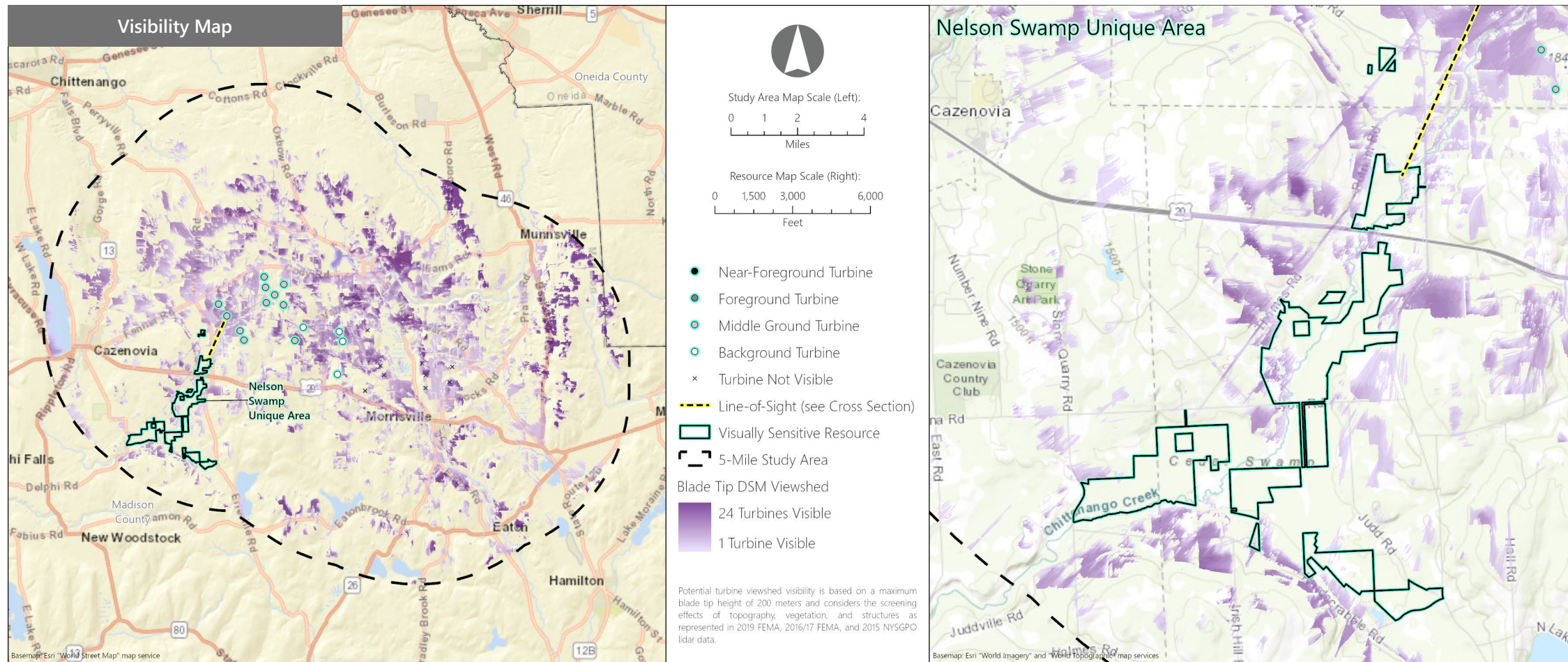
Line-of-Sight Cross Section



Hoffman Falls Wind Project

Towns of Eaton, Fenner, Nelson, and Smithfield, Madison County, New York

Visual Impact Assessment
Appendix 8-A



VSR ID # 136. Nelson Swamp Unique Area

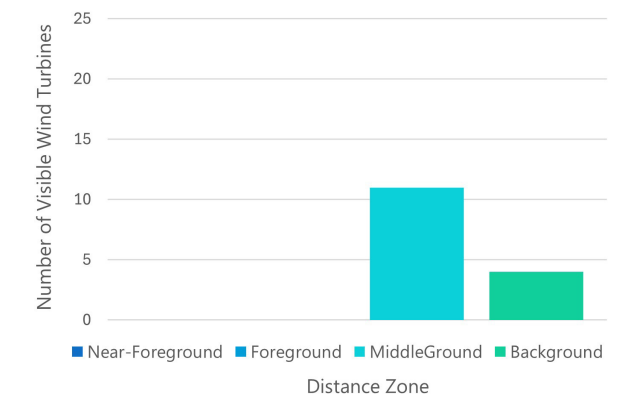
Municipality: Town of Eaton

County: Madison

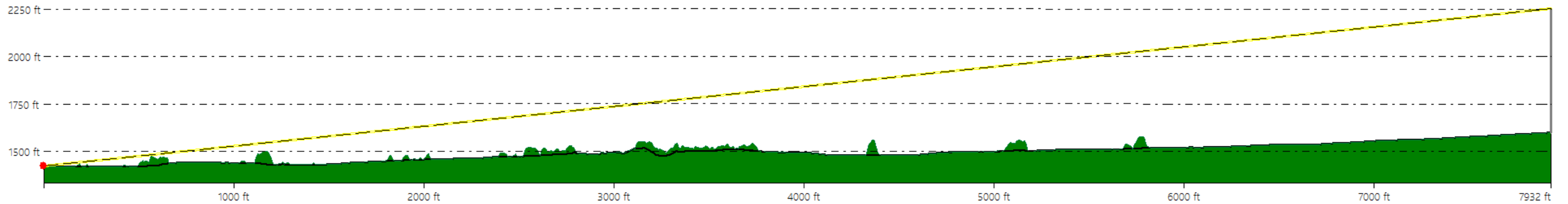
VSR Category: State Fishing/Waterway Access Sites

Percent of Turbine Visibility within VSR*: 5.4%

*Calculated using only the area of the VSR that falls within the VSA



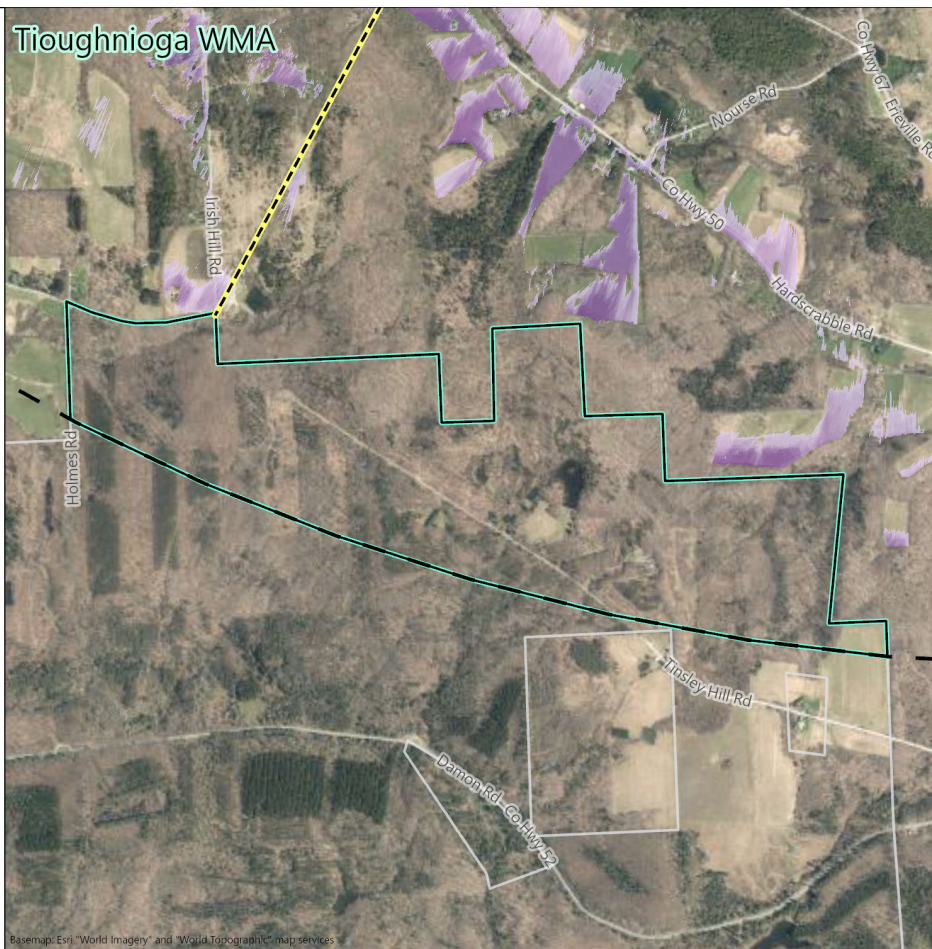
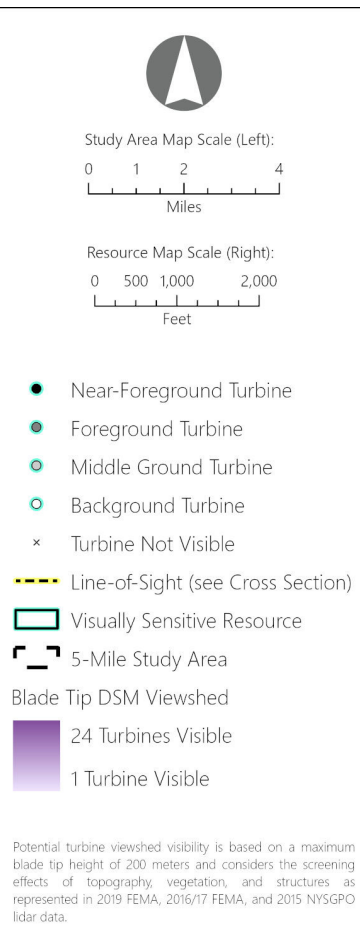
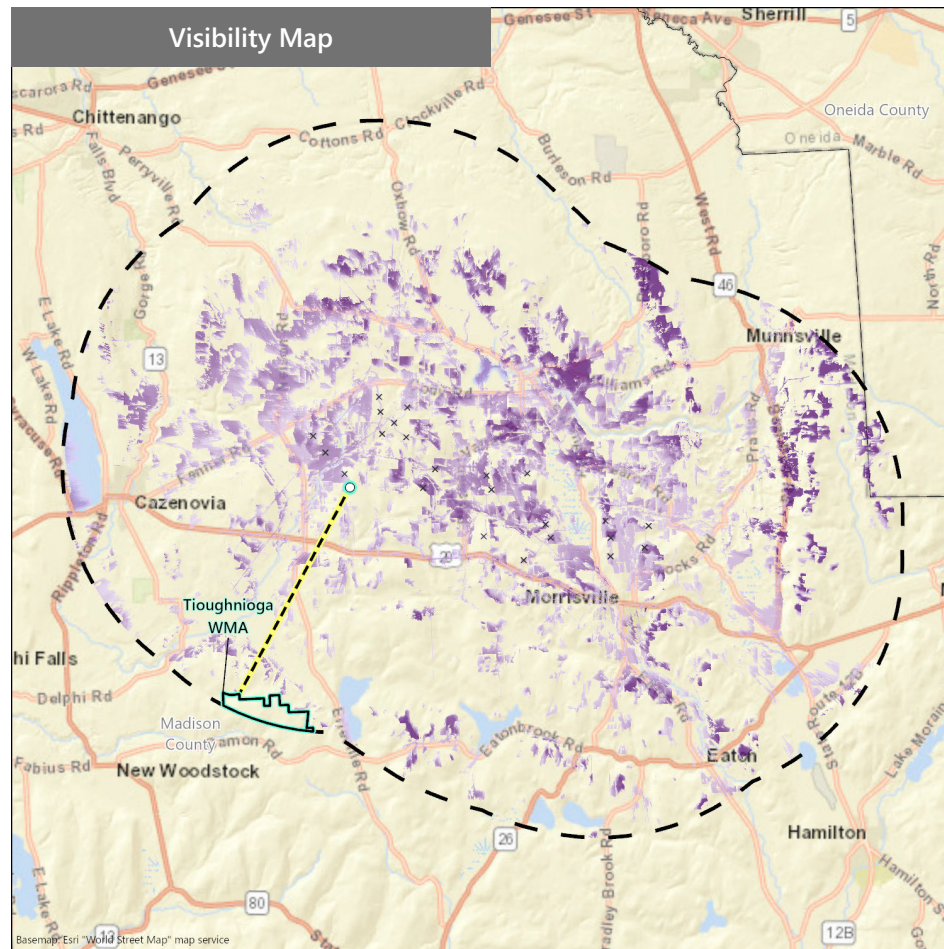
Line-of-Sight Cross Section



Hoffman Falls Wind Project

Towns of Eaton, Fenner, Nelson, and Smithfield, Madison County, New York

Visual Impact Assessment
Appendix 8-A



VSR ID # 137. Toughnioga WMA

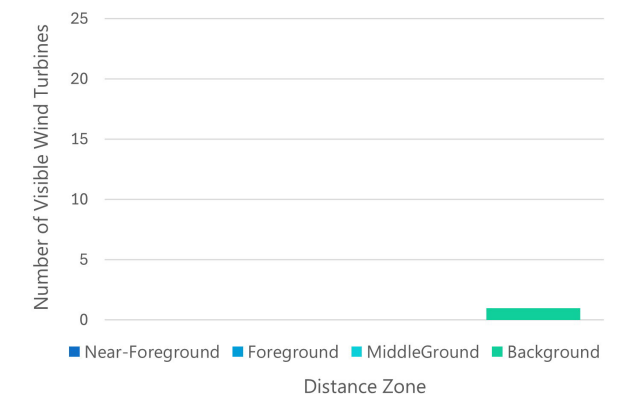
Municipality: Town of Nelson

County: Madison

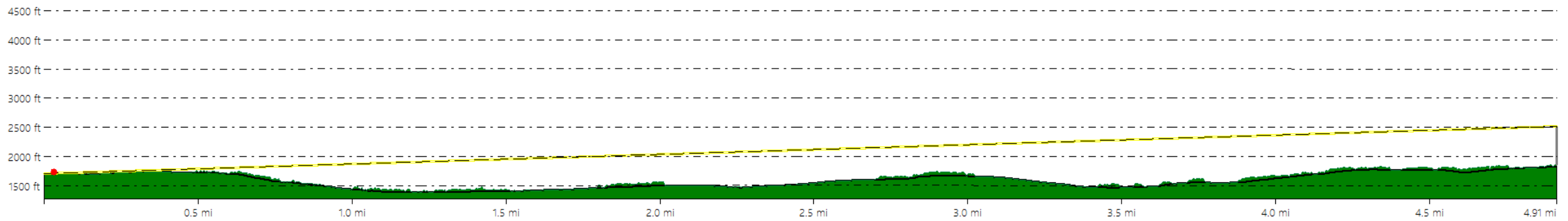
VSR Category: Wildlife Management Areas & Game Refuges

Percent of Turbine Visibility within VSR*: <0.1%

*Calculated using only the area of the VSR that falls within the VSA

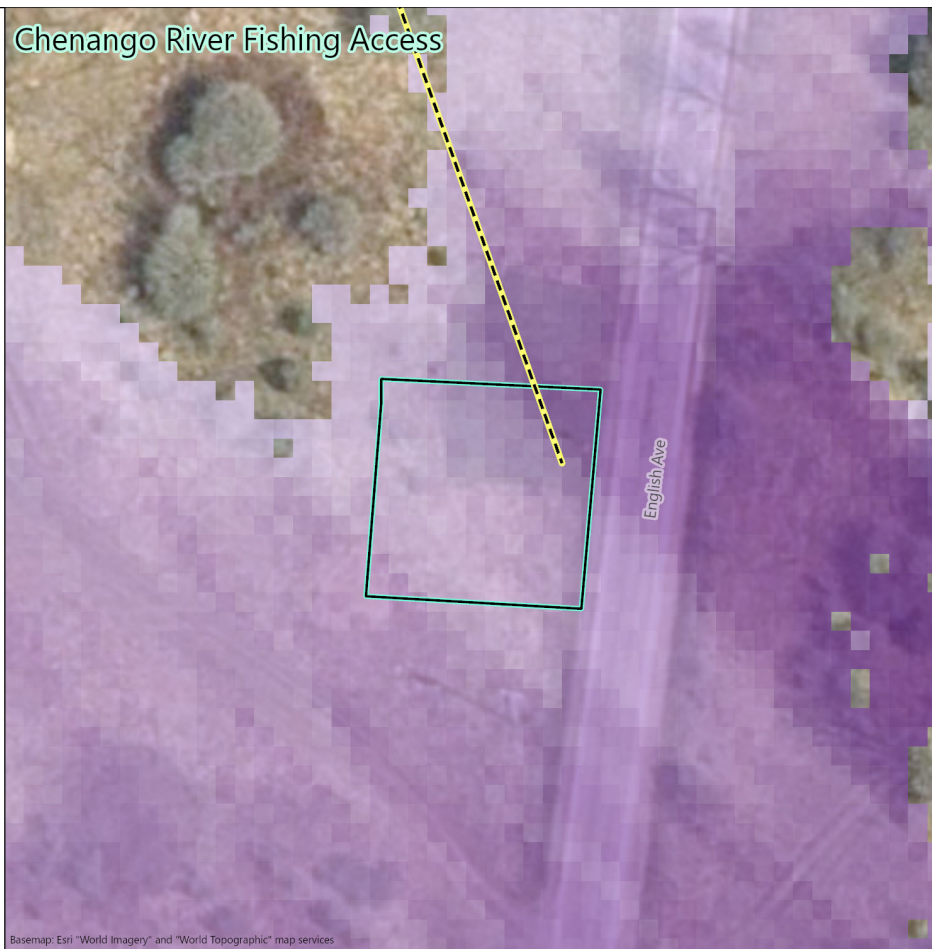
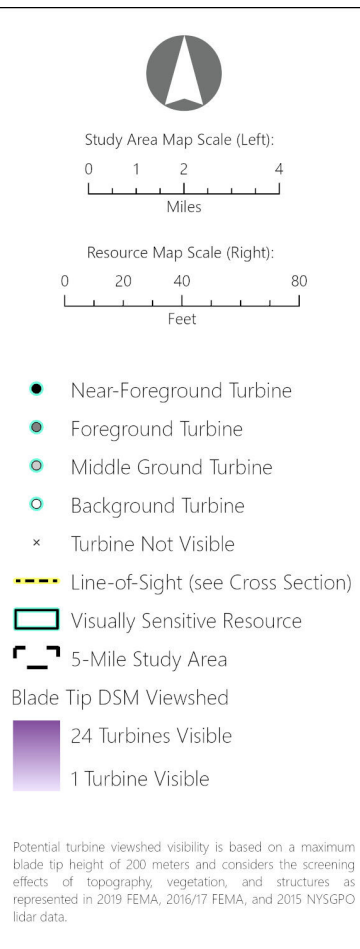
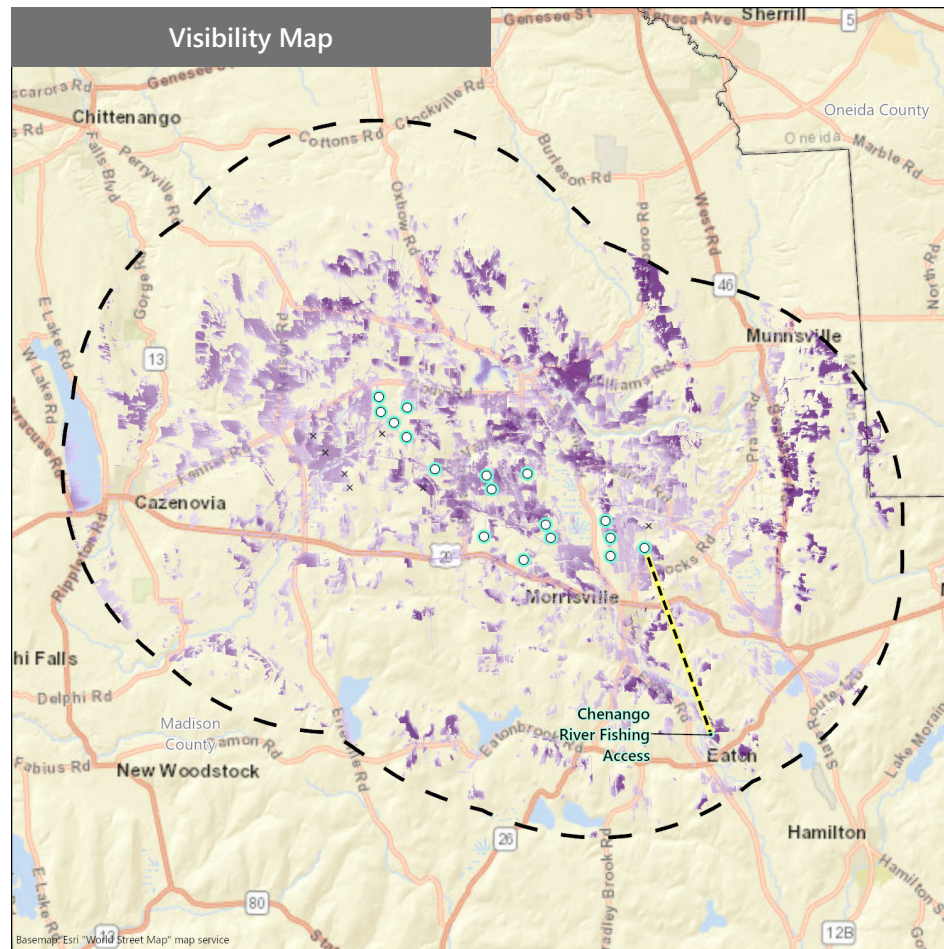


Line-of-Sight Cross Section



Hoffman Falls Wind Project
Towns of Eaton, Fenner, Nelson, and Smithfield, Madison County, New York

Visual Impact Assessment
Appendix 8-A



VSR ID # 139. Chenango River Fishing Access

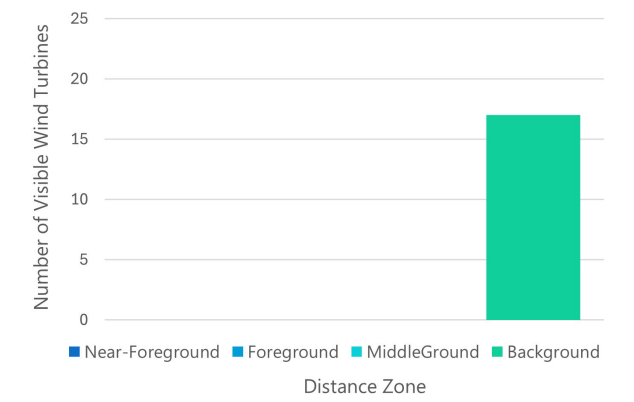
Municipality: Town of Eaton

County: Madison

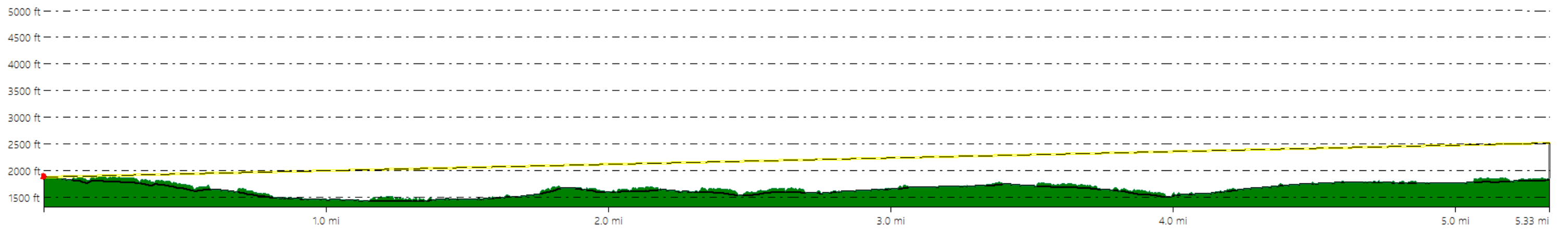
VSR Category: State Fishing/Waterway Access Sites

Percent of Turbine Visibility within VSR*: 50.1%

*Calculated using only the area of the VSR that falls within the VSA



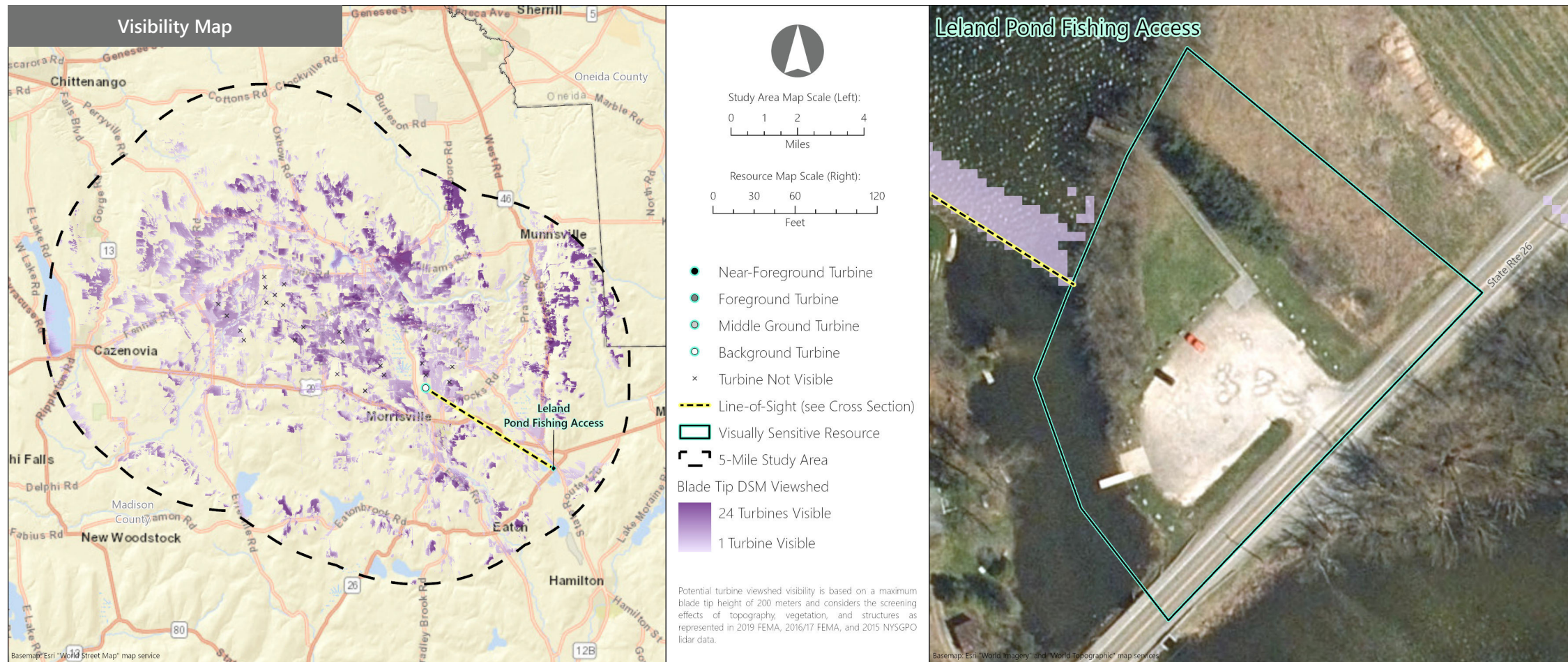
Line-of-Sight Cross Section



Hoffman Falls Wind Project

Towns of Eaton, Fenner, Nelson, and Smithfield, Madison County, New York

Visual Impact Assessment
Appendix 8-A



VSR ID # 142. Leland Pond Fishing Access

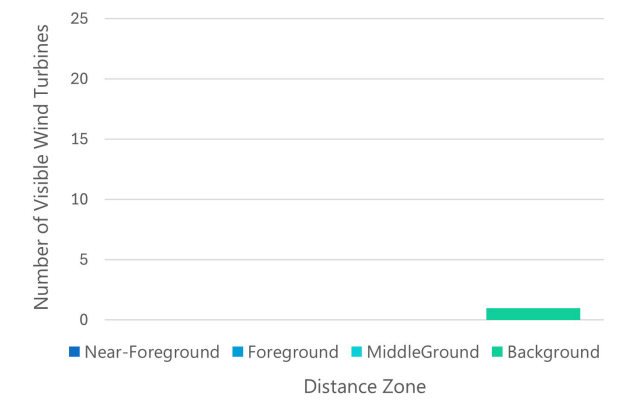
Municipality: Town of Eaton

County: Madison

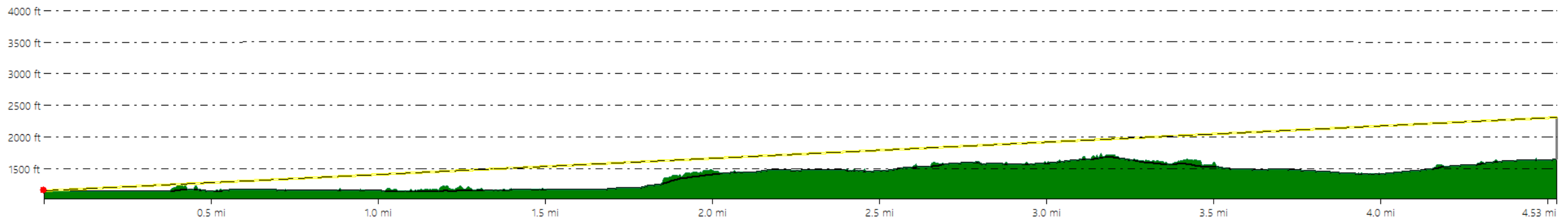
VSR Category: State Fishing/Waterway Access Sites

Percent of Turbine Visibility within VSR*: <0.1%

*Calculated using only the area of the VSR that falls within the VSA



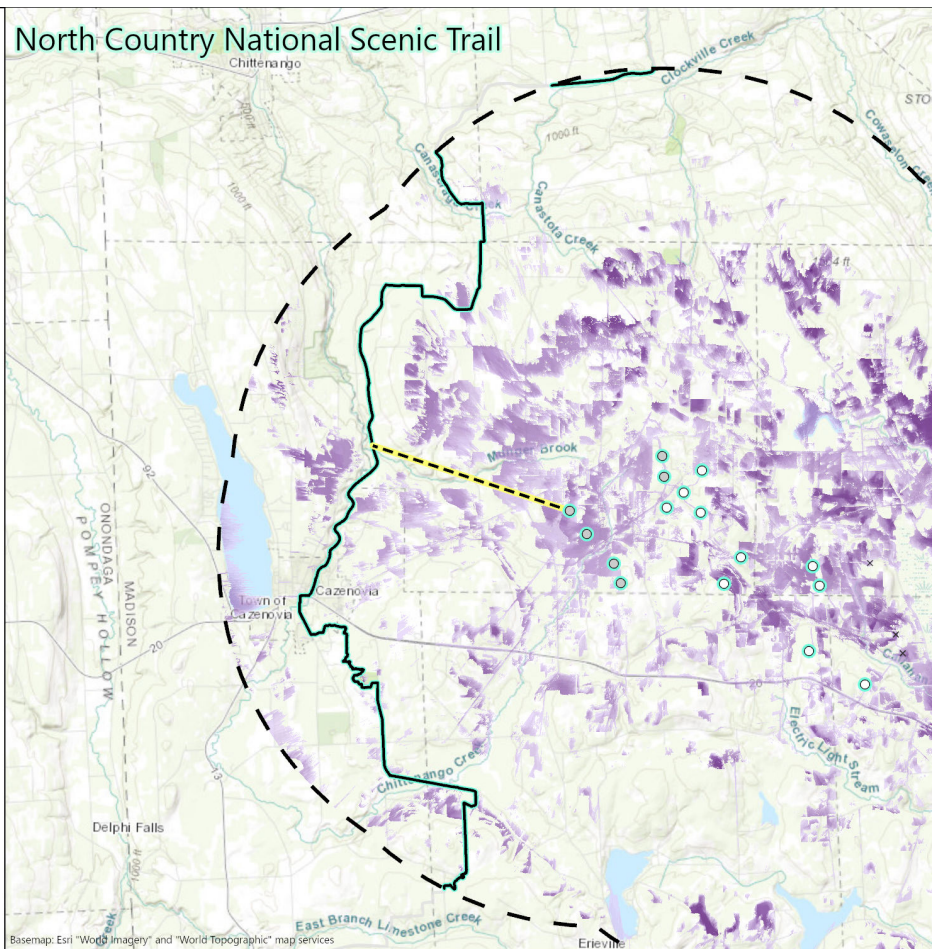
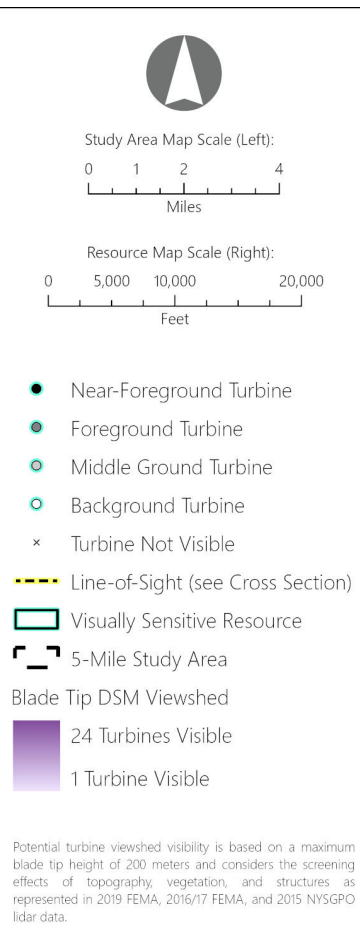
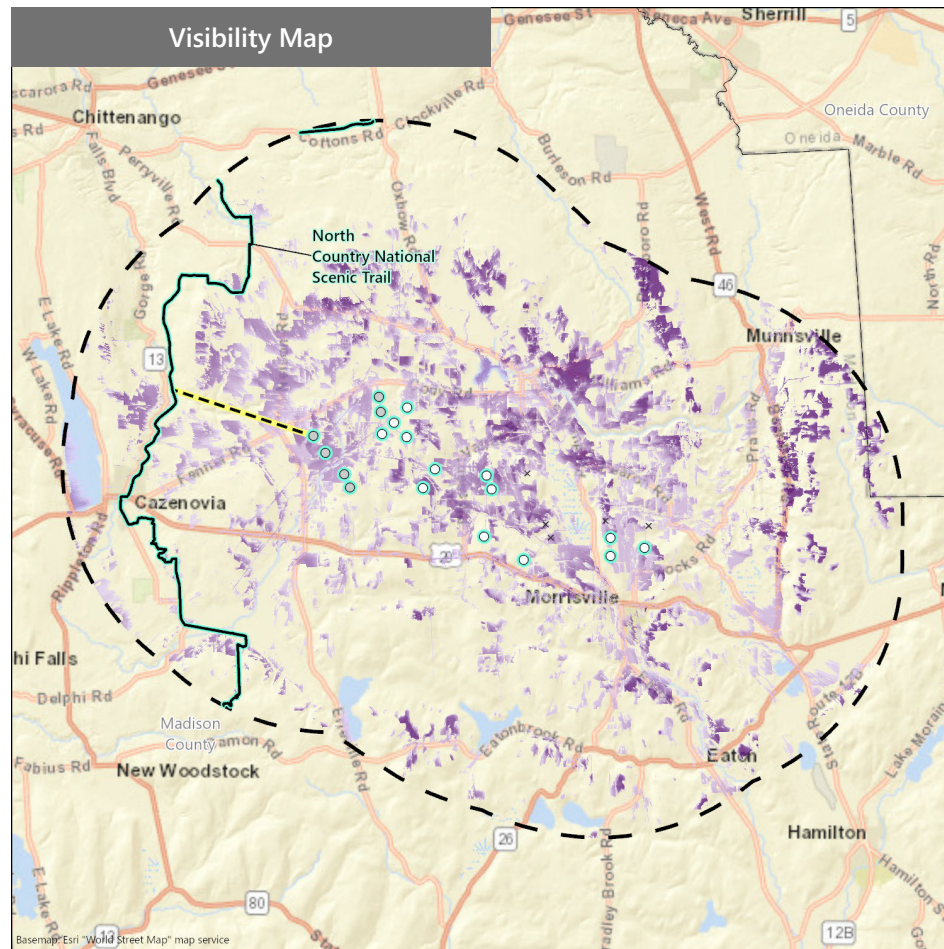
Line-of-Sight Cross Section



Hoffman Falls Wind Project

Towns of Eaton, Fenner, Nelson, and Smithfield, Madison County, New York

Visual Impact Assessment
Appendix 8-A



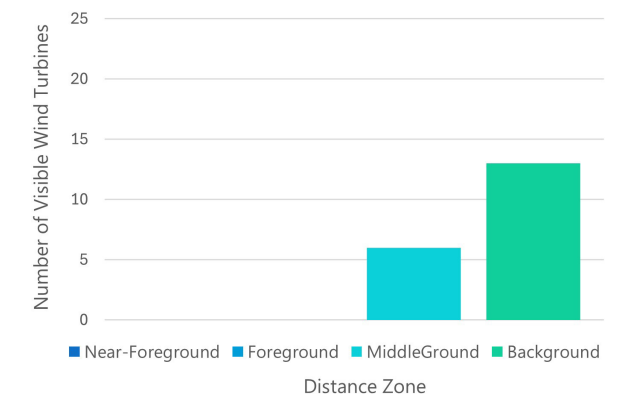
VSR ID # 143. North Country National Scenic Trail

Municipality: Towns of Cazenovia, Fenner, Lincoln, Nelson, and Sullivan
County: Madison

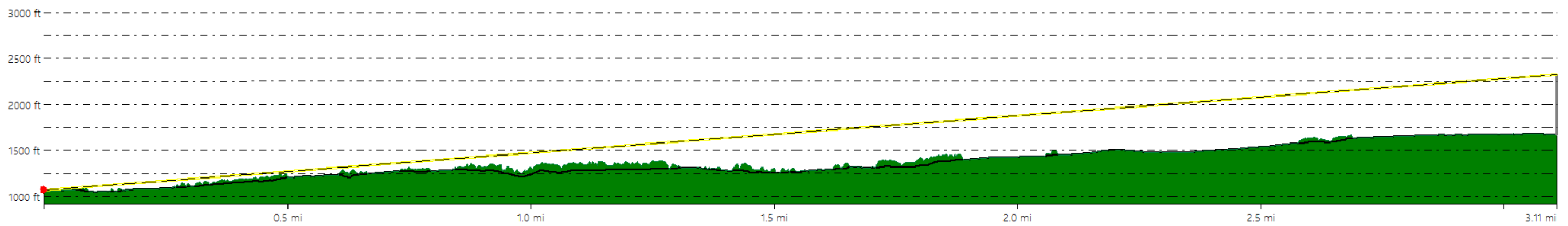
VSR Category: State and Federal Trails

Percent of Turbine Visibility within VSR*: 6.8%

*Calculated using only the area of the VSR that falls within the VSA



Line-of-Sight Cross Section



Hoffman Falls Wind Project
 Towns of Eaton, Fenner, Nelson, and Smithfield, Madison County, New York

Visual Impact Assessment
Appendix 8-A