

EXISTING VIEW



0 1 in 2 in
This scale is designed to insure the simulation images are printed at the intended size.

VIEWPOINT 23
Stone Bridge Road

Hoffman Falls Wind Project
Towns of Eaton, Fenner, Nelson, and Smithfield, Madison County, New York

EDR

Note: Printed at actual size, the existing view image is 15 inches wide by 10 inches high. At this size and focal length, the existing view image should be viewed from a distance 21 inches from the eye of the viewer.

PHOTOSIMULATION



Note: Printed at actual size, the resulting simulation image is 15 inches wide by 10 inches high. At this size and focal length, the simulation should be viewed from a distance 21 inches from the eye of the viewer.

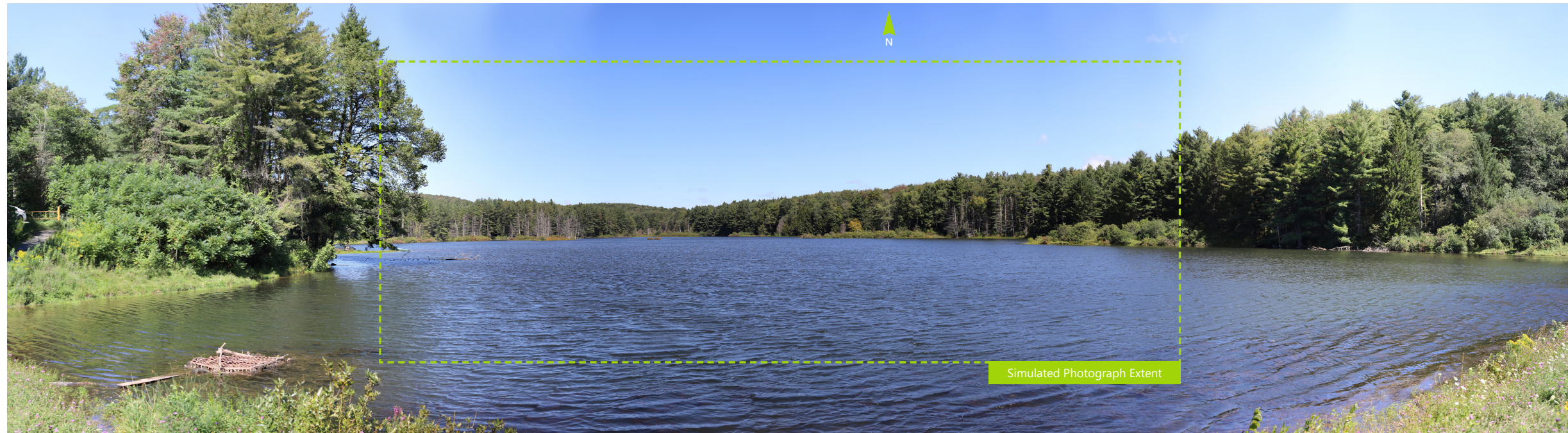
Hoffman Falls Wind Project

Towns of Eaton, Fenner, Nelson, and Smithfield, Madison County, New York

VIEWPOINT 23

Stone Bridge Road

0 1 in 2 in
This scale is designed to insure the simulation images are printed at the intended size.



Note: The image above is a panorama photograph taken from Stoney Pond State Forest in the Town of Nelson panning clockwise from northwest (left) to northeast (right). The green rectangle represents the extent of the simulated photograph.

VIEWPOINT 25
Stoney Pond State Forest

VIEWPOINT INFORMATION

Location: Stoney Pond State Forest
Town: Nelson
County: Madison
Latitude: 42.88129° N
Longitude: 75.71224° W

LOCATION INFORMATION

Distance Zone Represented in View: Middle
 Ground
Viewer Distance*: 2.6 miles
Landscape Similarity Zone: Water
Viewer/User Group(s): Local Residents, Tourists/
 Recreational Users
Visually Sensitive Resource(s): Stoney Pond,
 Stoney Pond State Forest

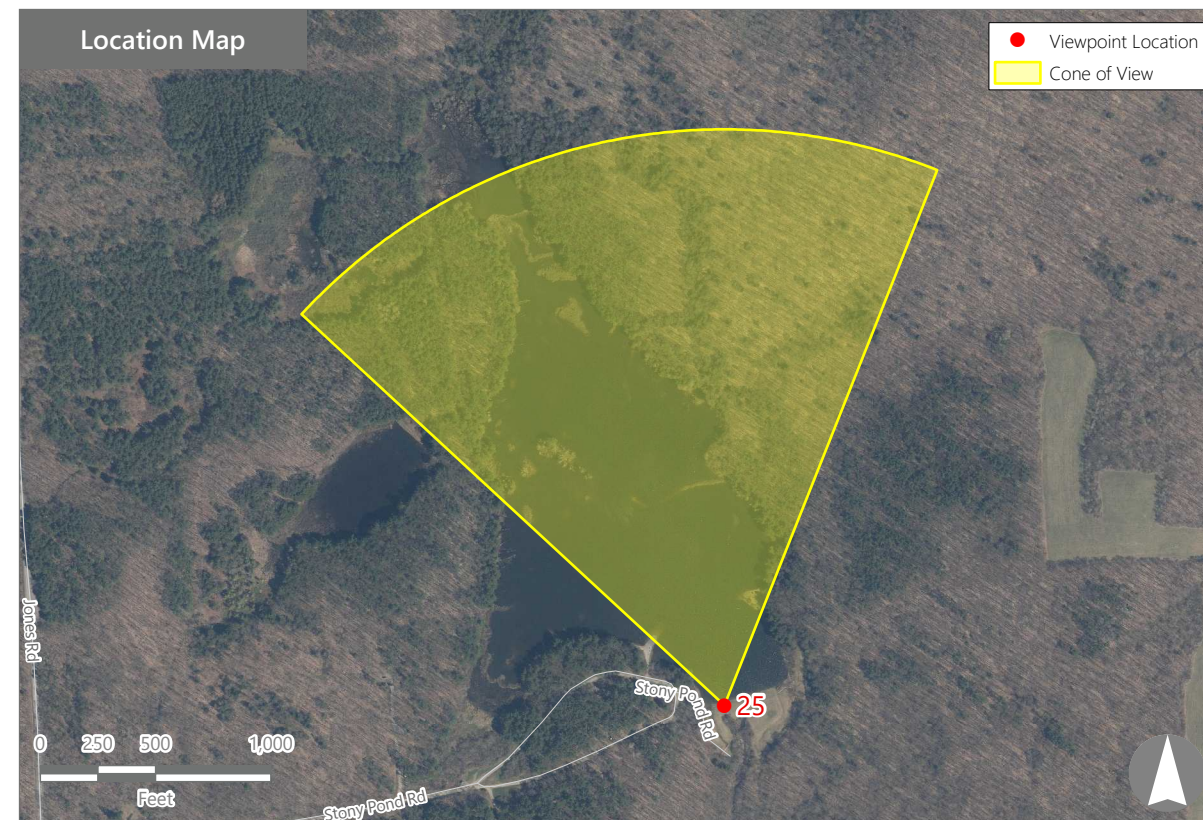
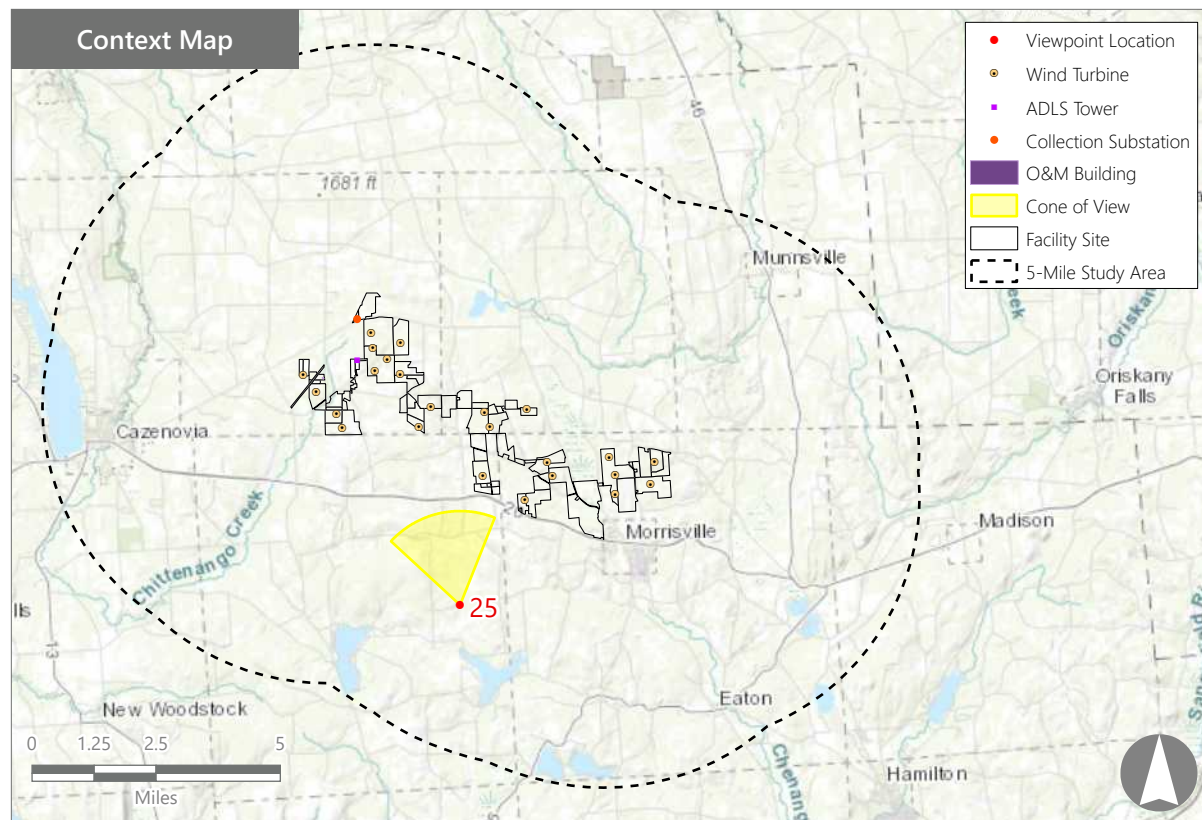
PHOTOGRAPH INFORMATION

Date: August 31, 2023
Time: 11:45 AM
Camera: Canon EOS 5D Mark IV
Resolution: 24 Megapixels
Lens Focal Length (35mm equivalent): 50 mm
Camera Elevation: 1,544 feet
Field of View: 39 degrees
Direction of View: North-northwest
Printed Size: 10" x 15"
Viewing Distance:** 21"

NOTES

*Distance as measured from the viewpoint to the closest wind turbine generator within the simulated photograph's field of view

**The simulation is at the correct perspective when printed on an 11 inch by 17 inch sheet at full scale, and viewed approximately 21 inches from the eye of the viewer.



Hoffman Falls Wind Project

Towns of Eaton, Fenner, Nelson, and Smithfield, Madison County, New York

Visual Impact Assessment
 Appendix 8-A