

PHOTOSIMULATION



**Hoffman Falls Wind Project**

Towns of Eaton, Fenner, Nelson, and Smithfield, Madison County, New York

VIEWPOINT 18

Gill Road

0 1 in 2 in

This scale is designed to insure the simulation images are printed at the intended size.

*Note: Printed at actual size, the resulting simulation image is 15 inches wide by 10 inches high. At this size and focal length, the simulation should be viewed from a distance 21 inches from the eye of the viewer.*





Note: The image above is a panorama photograph taken from Stone Bridge Road in the Town of Nelson panning clockwise from north (left) to southeast (right). The green rectangle represents the extent of the simulated photograph.

**VIEWPOINT 23**  
Stone Bridge Road

**VIEWPOINT INFORMATION**

**Location:** Stone Bridge Road  
**Town:** Nelson  
**County:** Madison  
**Latitude:** 42.92730° N  
**Longitude:** 75.71330° W

**LOCATION INFORMATION**

**Distance Zone Represented in View:** Middle Ground  
**Viewer Distance\*:** 0.8 mile  
**Landscape Similarity Zone:** Agricultural/Rural Residential  
**Viewer/User Group(s):** Local Residents  
**Visually Sensitive Resource(s):** None Identified

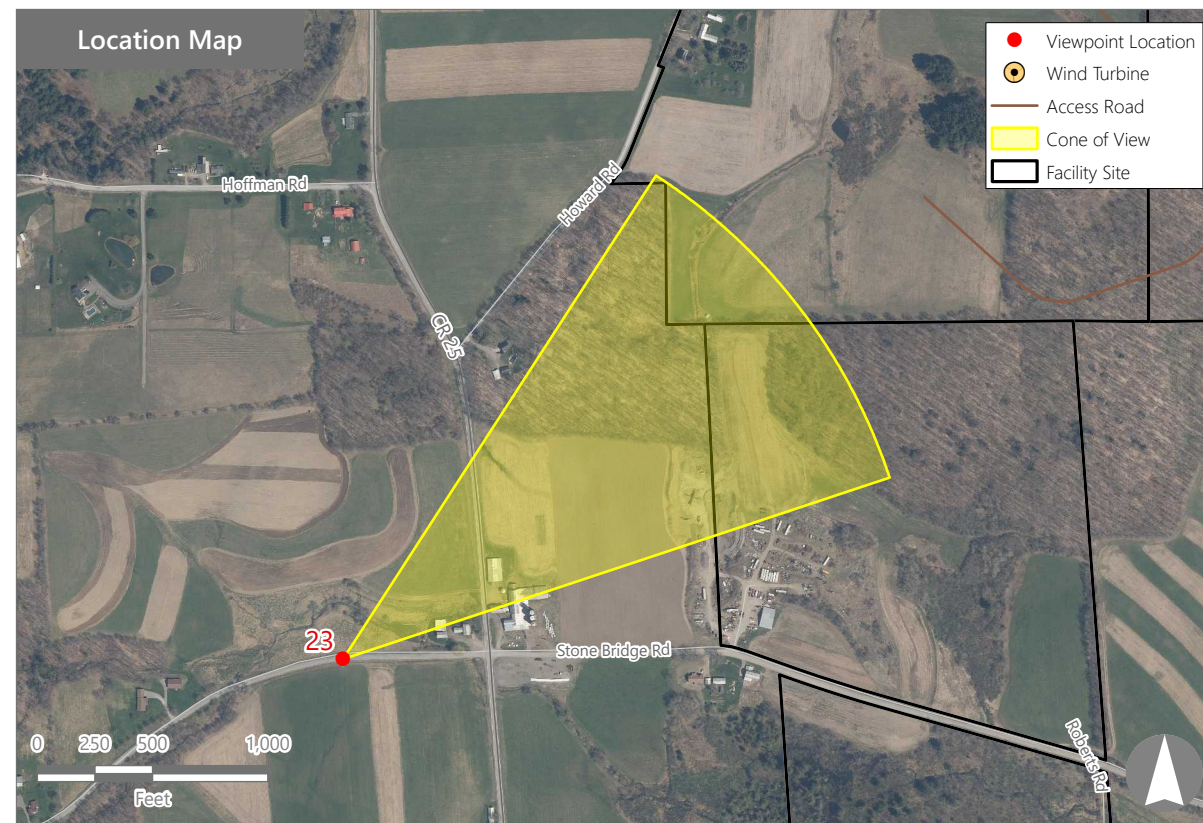
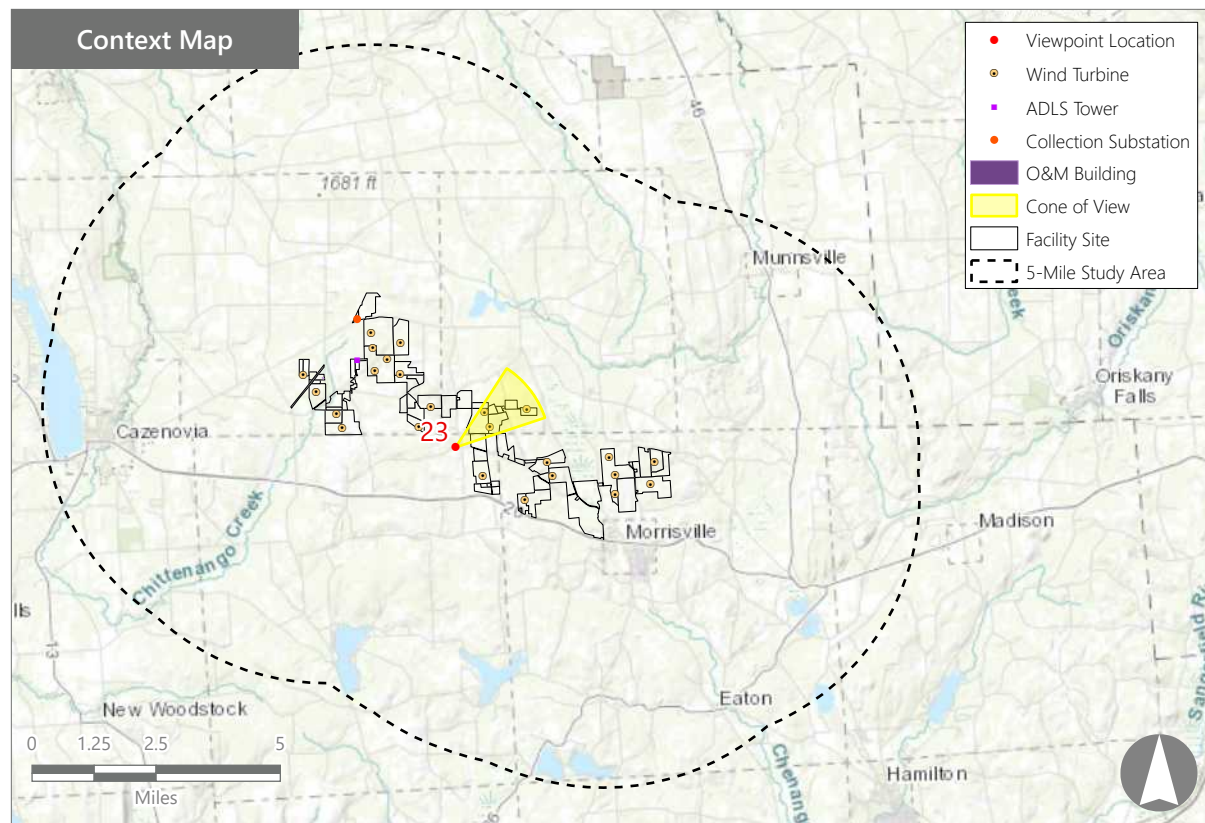
**PHOTOGRAPH INFORMATION**

**Date:** August 31, 2023  
**Time:** 11:25 AM  
**Camera:** Canon EOS 5D Mark IV  
**Resolution:** 24 Megapixels  
**Lens Focal Length (35mm equivalent):** 50 mm  
**Camera Elevation:** 1,505 feet  
**Field of View:** 39 degrees  
**Direction of View:** Northeast  
**Printed Size:** 10" x 15"  
**Viewing Distance\*\*:** 21"

**NOTES**

\*Distance as measured from the viewpoint to the closest wind turbine generator within the simulated photograph's field of view

\*\*The simulation is at the correct perspective when printed on an 11 inch by 17 inch sheet at full scale, and viewed approximately 21 inches from the eye of the viewer.



**Hoffman Falls Wind Project**

Towns of Eaton, Fenner, Nelson, and Smithfield, Madison County, New York

Visual Impact Assessment  
Appendix 8-A



**Viewpoint Sensitivity<sup>1</sup>:**

**Scenic Quality:**

- Low
- Moderate
- High

**Viewer Exposure**

**Frequency:**

- Rare
- Occasional
- Regular/Repeated

**Duration of View:**

- Short/Brief/Fleeting
- Moderate
- Long

<sup>1</sup>Viewpoint Sensitivity information is gathered from rating panel results. Scenic Quality is an average based on Low = 1, Moderate = 2, High = 3. Viewer Exposure reflects all those selected by the review panel.

**Contrast Rating Scores<sup>2</sup>:**

Component	Score		Contrast Rating
	Install		
Landform	2.2		Moderate
Vegetation	2.3		Moderate/Appreciable
Land Use	2.5		Moderate/Appreciable
Water	N/A		N/A
Sky	3.0		Appreciable
Viewer Activity	2.7		Moderate/Appreciable
<b>AVERAGE</b>	<b>2.5</b>		<b>Moderate/Appreciable</b>

<sup>2</sup> Contrast Rating Scale: 0.0 - 0.2 (Insignificant), 0.3 - 0.7 (Insignificant/Minimal), 0.8 - 1.2 (Minimal), 1.3 - 1.7 (Minimal/Moderate), 1.8 - 2.2 (Moderate), 2.3 - 2.7 (Moderate/Appreciable), 2.8 - 3.2 (Appreciable) 3.3 - 3.7 (Appreciable/Strong), 3.8 - 4.0 (Strong).

**Contrast Rating - Lowest and Highest Scores:**

Component	Post - Install	
	Score	
	Low	High
Landform	0.5	3.0
Vegetation	1.5	3.0
Land Use	2.0	3.0
Water	NA	NA
Sky	3.0	3.0
Viewer Activity	2.5	3.0

**Existing View**



**Proposed View (Post Installation)**



**Existing View**

Viewpoint 23 is located on Stone Bridge Road in the Town of Nelson, approximately 0.8 miles from the nearest proposed wind turbine that would be visible in the selected photo's field of view. This viewpoint occurs in the Agricultural/Rural Residential LSZ and is typical of views available to residents traveling local roads and those living in nearby homes. In the selected photo, the existing view to the northeast includes the surface of the road in the immediate foreground, bordered by a mowed shoulder and band of unmowed goldenrod. Behind the vegetation along the road shoulder, the middle ground includes a mix of managed agricultural fields, farm structures and equipment, and a patch of unmanaged successional old field vegetation. Beyond the fields, a band of trees defines the edge of a woodlot that follows the gently rolling topography up to an undulating horizon line that blocks views of more distant landscape features. An overhead utility line, set well back from the road edge, is the only interruption to an otherwise clear and open sky. The rolling hills enclose the view, and the presence of agricultural fields and farm structures equipment give the view a strong rural/agricultural character. Scenic quality of the existing view was characterized as high by the rating panel.

**Proposed View**

With the proposed Project in place, two wind turbines and a steel lattice met tower are prominent new additions to the view. The vertical line of these new structures is consistent with the existing utility poles, but their scale contrast with the existing landform and vegetation is notable. Shadowing from the sun also makes these structures stand out against the clear blue sky. The turbines and met tower do not appear totally out of place in a working agricultural landscape with existing built features already present. However, they are somewhat discordant features that serve as focal points adding visual clutter to the view, and the vertical line of these components was viewed to have moderate to appreciable contrast with the horizontal landscape.

**Hoffman Falls Wind Project**

Towns of Eaton, Fenner, Nelson, and Smithfield, Madison County, New York