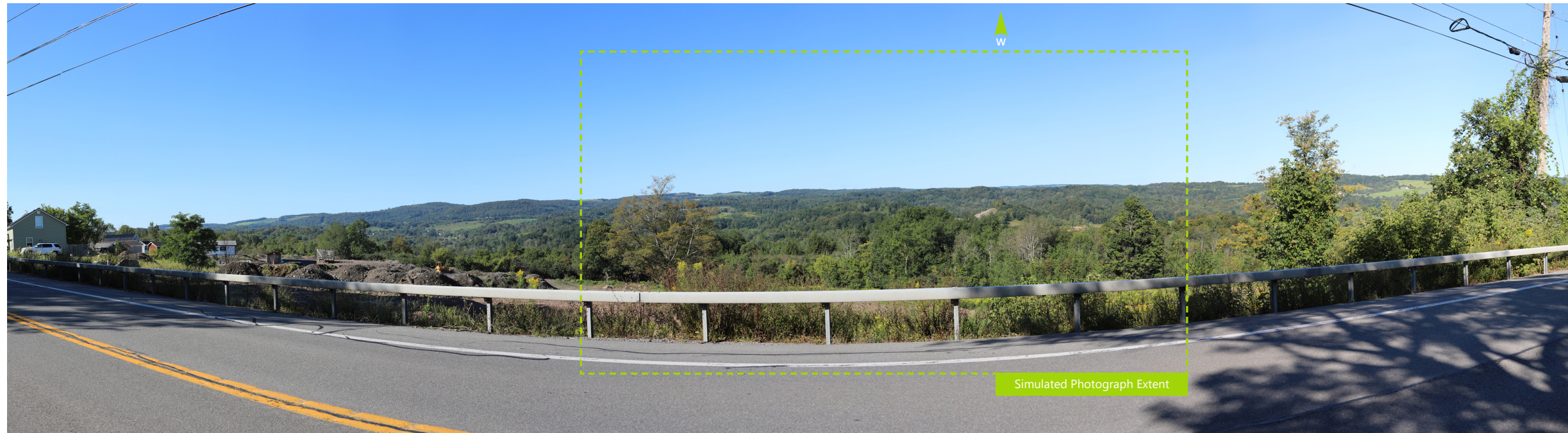


EXISTING VIEW - PANORAMA



PHOTOSIMULATION - PANORAMA





Note: The image above is a panorama photograph taken from NYS Route 46 in the Town of Stockbridge panning clockwise from southwest (left) to northwest (right). The green rectangle represents the extent of the simulated photograph.

VIEWPOINT 14
NYS Route 46

VIEWPOINT INFORMATION

Location: NYS Route 46
Town: Stockbridge
County: Madison
Latitude: 42.94724° N
Longitude: 75.57975° W

LOCATION INFORMATION

Distance Zone Represented in View: Middle Ground
Viewer Distance*: 3.3 miles
Landscape Similarity Zone: Agricultural/Rural Residential

Viewer/User Group(s): Local Residents, Through-Travelers

Visually Sensitive Resource(s): NYS Route 46, Erie Canalway National Heritage Corridor

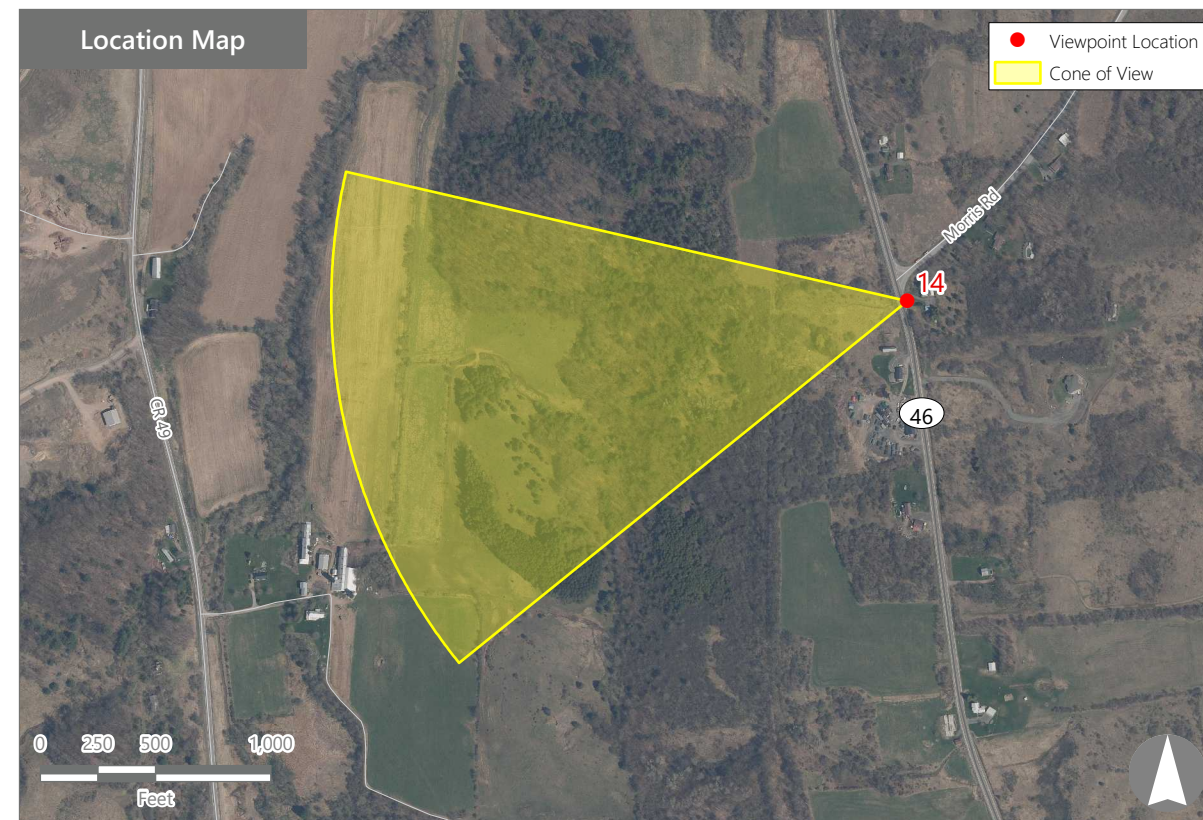
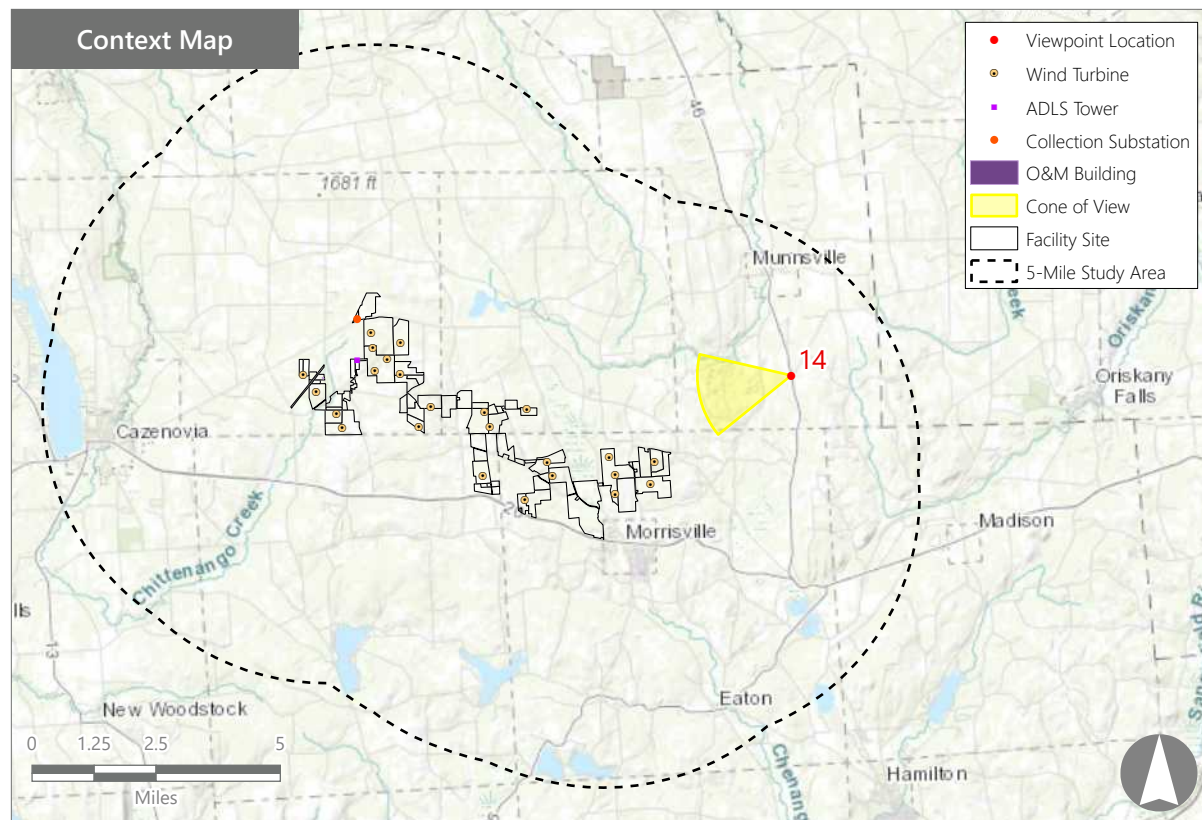
PHOTOGRAPH INFORMATION

Date: August 31, 2023
Time: 9:43 AM
Camera: Canon EOS 5D Mark IV
Resolution: 24 Megapixels
Lens Focal Length (35mm equivalent): 50 mm
Camera Elevation: 1,082 feet
Field of View: 39 degrees
Direction of View: West-Southwest
Printed Size: 10" x 15"
Viewing Distance:** 21"

NOTES

*Distance as measured from the viewpoint to the closest wind turbine generator within the simulated photograph's field of view

**The simulation is at the correct perspective when printed on an 11 inch by 17 inch sheet at full scale, and viewed approximately 21 inches from the eye of the viewer.



Hoffman Falls Wind Project

Towns of Eaton, Fenner, Nelson, and Smithfield, Madison County, New York

Visual Impact Assessment
Appendix 8-A

Viewpoint Sensitivity¹:

Scenic Quality:

- Low
- Moderate
- High

Viewer Exposure

Frequency:

- Rare
- Occasional
- Regular/Repeated

Duration of View:

- Short/Brief/Fleeting
- Moderate
- Long

¹Viewpoint Sensitivity information is gathered from rating panel results. Scenic Quality is an average based on Low = 1, Moderate = 2, High = 3. Viewer Exposure reflects all those selected by the review panel.

Contrast Rating Scores²:

| Component | Score | | Contrast Rating |
|-----------------|------------|--|------------------|
| | Install | | |
| Landform | 0.8 | | Minimal |
| Vegetation | 0.8 | | Minimal |
| Land Use | 1.3 | | Minimal/Moderate |
| Water | N/A | | N/A |
| Sky | 1.5 | | Minimal/Moderate |
| Viewer Activity | 1.3 | | Minimal/Moderate |
| AVERAGE | 1.2 | | Minimal |

² Contrast Rating Scale: 0.0 - 0.2 (Insignificant), 0.3 - 0.7 (Insignificant/Minimal), 0.8 - 1.2 (Minimal), 1.3 - 1.7 (Minimal/Moderate), 1.8 - 2.2 (Moderate), 2.3 - 2.7 (Moderate/Appreciable), 2.8 - 3.2 (Appreciable) 3.3 - 3.7 (Appreciable/Strong), 3.8 - 4.0 (Strong).

Contrast Rating - Lowest and Highest Scores:

| Component | Post - Install | |
|-----------------|----------------|------|
| | Score | |
| | Low | High |
| Landform | 0.5 | 1.0 |
| Vegetation | 0.5 | 4.0 |
| Land Use | 1.0 | 2.0 |
| Water | NA | NA |
| Sky | 1.0 | 2.0 |
| Viewer Activity | 1.0 | 2.0 |

Existing View



Proposed View (Post Installation)



Existing View

Viewpoint 14 is located on State Route 46 in the Town of Stockbridge, approximately 3.3 miles from the nearest proposed wind turbine that would be visible in the selected photo's field of view. This relatively high elevation viewpoint occurs in the Agricultural/Rural Residential LSZ but overlooks an area characterized by more abundant woody vegetation. Typical viewers at this location would be through travelers and local residents. In the selected view to the west-southwest, a guardrail at the edge of the highway is a prominent horizontal feature in the immediate foreground. Beyond the guardrail, the land descends into a shallow wooded valley. Forest vegetation is the dominant land cover and extends from the foreground to the distant background. The land rises from the middle ground to a ridgeline where the forest is broken by occasional open fields. Above the ridgeline, the sky is clear blue and uninterrupted by foreground trees or structures. The horizon line, guardrail, and road edge present strong horizontal lines in the landscape, and beyond the road edge, developed features are generally lacking. Elevated viewer perspective and the lack of large trees or structures in the foreground allow for uninterrupted long-distance views from this location. The scenic quality of this view was characterized as variable by the rating panel and indicated to range from low to high.

Proposed View

With the proposed Project in place, multiple wind turbines can be seen extending into the sky at and beyond the ridgeline that defines the horizon. The height/scale contrast of the turbines relative to trees on the ridgeline is notable. But their color contrast with the sky is limited due to lighting conditions, their white color, and distance from the viewer. Because they are closer and essentially unscreened by the ridgeline, turbines in the left half of the view are more prominent than those on the right. Limited color contrast and the effects of distance also reduce the contrast of the turbines' vertical lines with the horizontal features of the landscape. Although the wind turbines represent new focal points that draw viewer attention, the average contrast rating received was minimal indicating they do not significantly change the character or scenic quality of the existing view.

Hoffman Falls Wind Project

Towns of Eaton, Fenner, Nelson, and Smithfield, Madison County, New York

EXISTING VIEW



0 1 in 2 in
This scale is designed to insure the simulation images are printed at the intended size.

VIEWPOINT 14
NYS Route 46

Hoffman Falls Wind Project
Towns of Eaton, Fenner, Nelson, and Smithfield, Madison County, New York

EDR

Note: Printed at actual size, the resulting simulation image is 15 inches wide by 10 inches high. At this size and focal length, the simulation should be viewed from a distance 21 inches from the eye of the viewer.