



Note: The image above is a panorama photograph taken from Lorenzo State Historic Site in the Town of Cazenovia panning clockwise from northeast (left) to southeast (right). The green rectangle represents the extent of the simulated photograph.

**VIEWPOINT 63**  
Lorenzo State Historic Site

**VIEWPOINT INFORMATION**

**Location:** Lorenzo State Historic Site  
**Town:** Cazenovia  
**County:** Madison  
**Latitude:** 42.92102° N  
**Longitude:** 75.86273° W

**LOCATION INFORMATION**

**Distance Zone Represented in View:** Background  
**Viewer Distance\*:** 4.9 miles  
**Landscape Similarity Zone:** Agricultural/Rural  
 Residential  
**Viewer/User Group(s):** Local Residents and  
 Tourist/Recreation Users

**Visually Sensitive Resource(s):** Lorenzo State Historic Site, Erie Canalway National Heritage Corridor, Lorenzo State Historic Site, Cazenovia Village Historic District, Lorenzo, Rippleton Schoolhouse, Village of Cazenovia

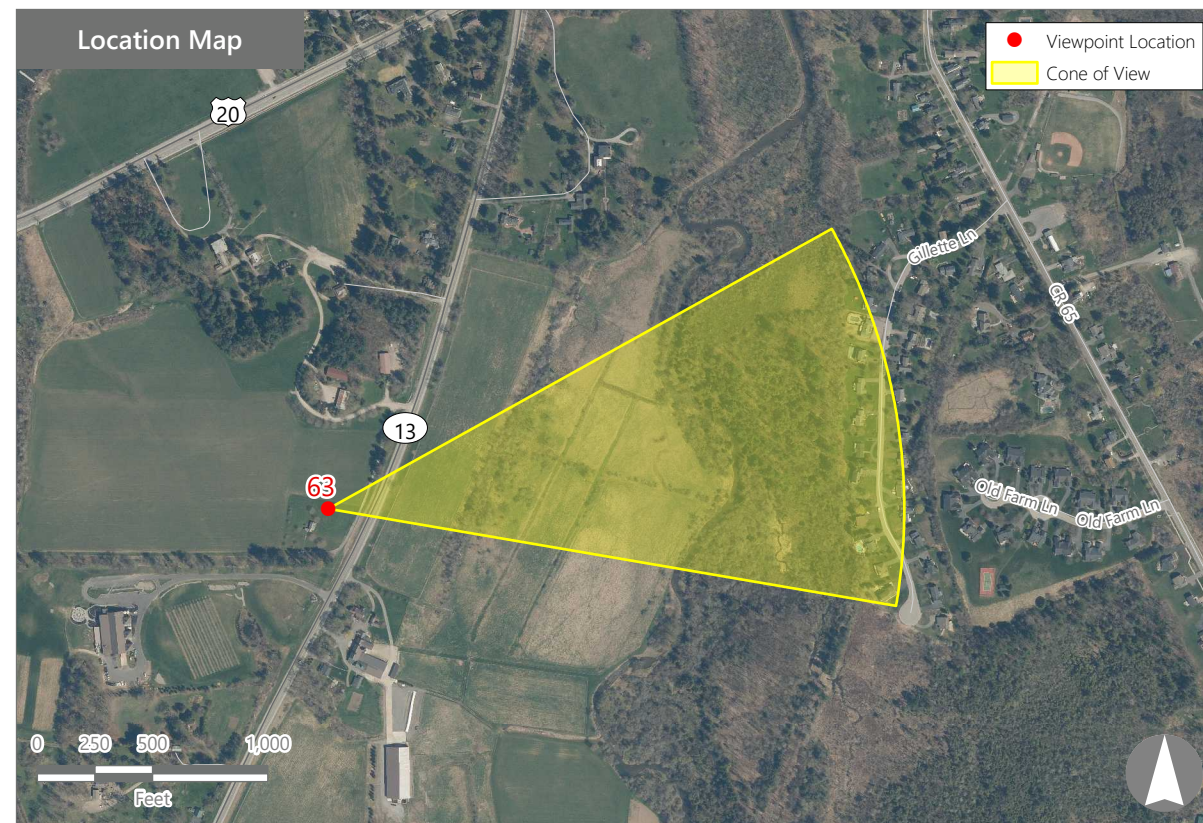
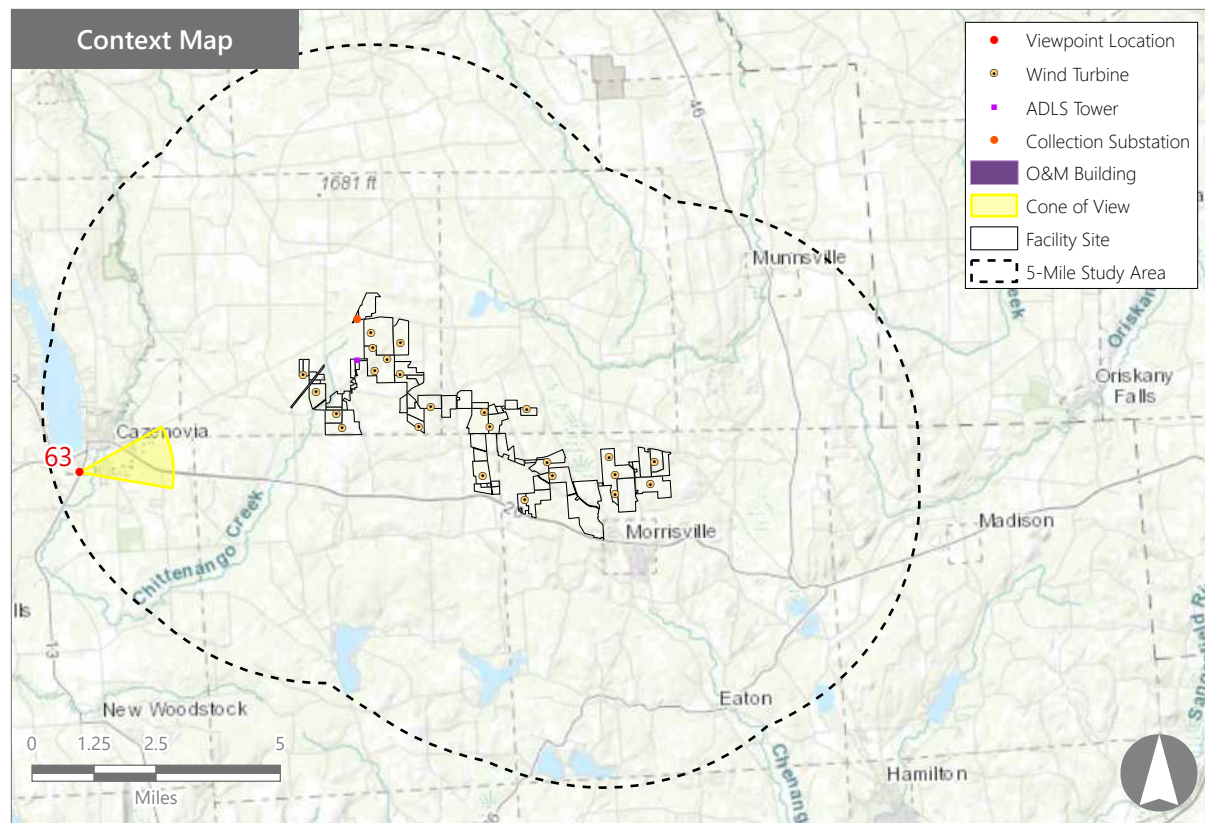
**PHOTOGRAPH INFORMATION**

**Date:** August 31, 2023  
**Time:** 5:50 PM  
**Camera:** Canon EOS 5D Mark IV  
**Resolution:** 24 Megapixels  
**Lens Focal Length (35mm equivalent):** 50 mm  
**Camera Elevation:** 1,239 feet  
**Field of View:** 39 degrees  
**Direction of View:** East  
**Printed Size:** 10" x 15"  
**Viewing Distance\*\*:** 21"

**NOTES**

\*Distance as measured from the viewpoint to the closest wind turbine generator within the simulated photograph's field of view

\*\*The simulation is at the correct perspective when printed on an 11 inch by 17 inch sheet at full scale, and viewed approximately 21 inches from the eye of the viewer.



**Hoffman Falls Wind Project**

Towns of Eaton, Fenner, Nelson, and Smithfield, Madison County, New York

Visual Impact Assessment  
Appendix 8-A

**Viewpoint Sensitivity<sup>1</sup>:**

**Scenic Quality:**

- Low
- Moderate
- High

**Viewer Exposure**

**Frequency:**

- Rare
- Occasional
- Regular/Repeated

**Duration of View:**

- Short/Brief/Fleeting
- Moderate
- Long

<sup>1</sup>Viewpoint Sensitivity information is gathered from rating panel results. Scenic Quality is an average based on Low = 1, Moderate = 2, High = 3. Viewer Exposure reflects all those selected by the review panel.

**Contrast Rating Scores<sup>2</sup>:**

Component	Score		Contrast Rating
	Install		
Landform	0.5		Insignificant/Minimal
Vegetation	0.5		Insignificant/Minimal
Land Use	0.5		Insignificant/Minimal
Water	N/A		N/A
Sky	0.7		Insignificant/Minimal
Viewer Activity	0.7		Insignificant/Minimal
<b>AVERAGE</b>	<b>0.6</b>		<b>Insignificant/Minimal</b>

<sup>2</sup> Contrast Rating Scale: 0.0 - 0.2 (Insignificant), 0.3 - 0.7 (Insignificant/Minimal), 0.8 - 1.2 (Minimal), 1.3 - 1.7 (Minimal/Moderate), 1.8 - 2.2 (Moderate), 2.3 - 2.7 (Moderate/Appreciable), 2.8 - 3.2 (Appreciable) 3.3 - 3.7 (Appreciable/Strong), 3.8 - 4.0 (Strong).

**Contrast Rating - Lowest and Highest Scores:**

Component	Post - Install	
	Score	
	Low	High
Landform	0.0	1.0
Vegetation	0.0	1.0
Land Use	0.0	1.0
Water	NA	NA
Sky	0.0	1.5
Viewer Activity	0.0	1.5

**Existing View**



**Proposed View (Post Installation)**



**Existing View**

Viewpoint 63 is located at the Lorenzo State Historic Site in the Town of Cazenovia, approximately 4.9 miles from the nearest proposed wind turbine that would be visible in the selected photo's field of view. This viewpoint occurs in the Agricultural/Rural Residential LSZ and typical viewers at this location would be local residents and tourists visiting this historic site. In the selected view to the east, there are clear horizontal divisions between the foreground and the background. The foreground includes a broad expanse of green mown lawn associated with the historic site. The middle ground is traversed by a paved road bordered on the near side by a band of unmowed herbaceous vegetation and a gravel pathway. Overhead electrical lines also run parallel to the road, extend across the full width of the view, and extend above the horizon line. A couple of electrical poles and a large tree adjacent to the road draw the attention of the viewer. Beyond the road, the landscape descends where thick and verdant forest obscure views of the landscape until a line of low hills rise in the background. The distant hills are completely wooded save for a large white building that is visible below the horizon. The sky above the horizon line is clear and blue. The rating panel indicated that this view has relatively low scenic quality.

**Proposed View**

With the proposed Project in place, a few turbines are visible above the horizon line but are heavily obscured by the trees and the overhead electrical lines in the middle ground. Their distance and white color against the blue sky limit the perceptibility of the turbines, and even where fully visible, they are lost amongst the clutter of the existing overhead lines. In the selected view, the electrical lines, poles, and middle ground tree remain the strong visual focus and draw the eye away from the horizon and the proposed Project. The turbines do not alter the character of the existing view, and according to the rating panel, scenic quality of this view with the Project in place and remains consistent with the exiting view.

**Hoffman Falls Wind Project**

Towns of Eaton, Fenner, Nelson, and Smithfield, Madison County, New York

EXISTING VIEW



Note: Printed at actual size, the existing view image is 15 inches wide by 10 inches high. At this size and focal length, the existing view image should be viewed from a distance 21 inches from the eye of the viewer.

PHOTOSIMULATION



**Hoffman Falls Wind Project**

Towns of Eaton, Fenner, Nelson, and Smithfield, Madison County, New York

VIEWPOINT 63

Lorenzo State Historic Site

0 1 in 2 in

This scale is designed to insure the simulation images are printed at the intended size.

*Note: Printed at actual size, the resulting simulation image is 15 inches wide by 10 inches high. At this size and focal length, the simulation should be viewed from a distance 21 inches from the eye of the viewer.*