

PHOTOSIMULATION



Hoffman Falls Wind Project

Towns of Eaton, Fenner, Nelson, and Smithfield, Madison County, New York

VIEWPOINT 54

South Road

0 1 in 2 in

This scale is designed to insure the simulation images are printed at the intended size.

Note: Printed at actual size, the resulting simulation image is 15 inches wide by 10 inches high. At this size and focal length, the simulation should be viewed from a distance 21 inches from the eye of the viewer.



Note: The image above is a panorama photograph taken from Hardscrabble Road in the Town of Nelson panning clockwise from northwest (left) to east (right). The green rectangle represents the extent of the simulated photograph.

VIEWPOINT 58

Hardscrabble Road

VIEWPOINT INFORMATION

Location: Hardscrabble Road
Town: Nelson
County: Madison
Latitude: 42.88564° N
Longitude: 75.80842° W

LOCATION INFORMATION

Distance Zone Represented in View: Background
Viewer Distance*: 4.2 miles
Landscape Similarity Zone: Agricultural/Rural
 Residential
Viewer/User Group(s): Local Residents, Through-Travelers
Visually Sensitive Resource(s): None Identified

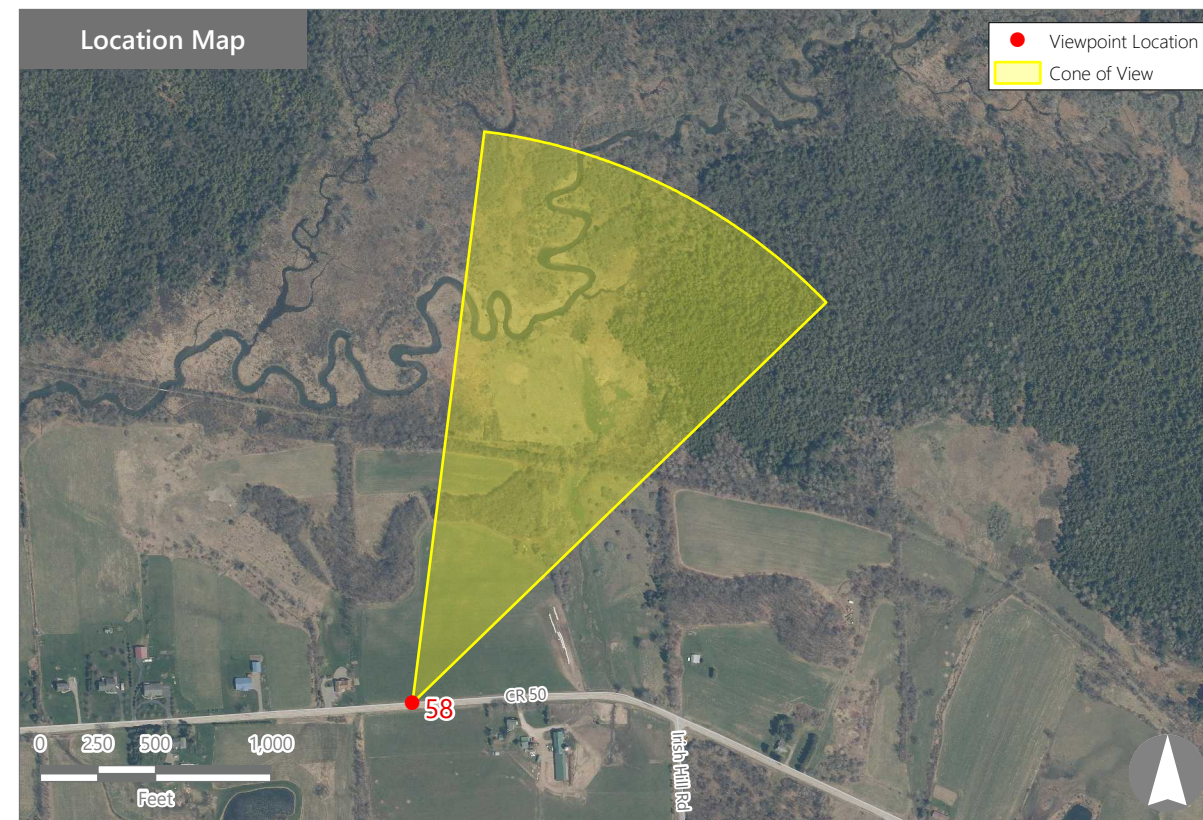
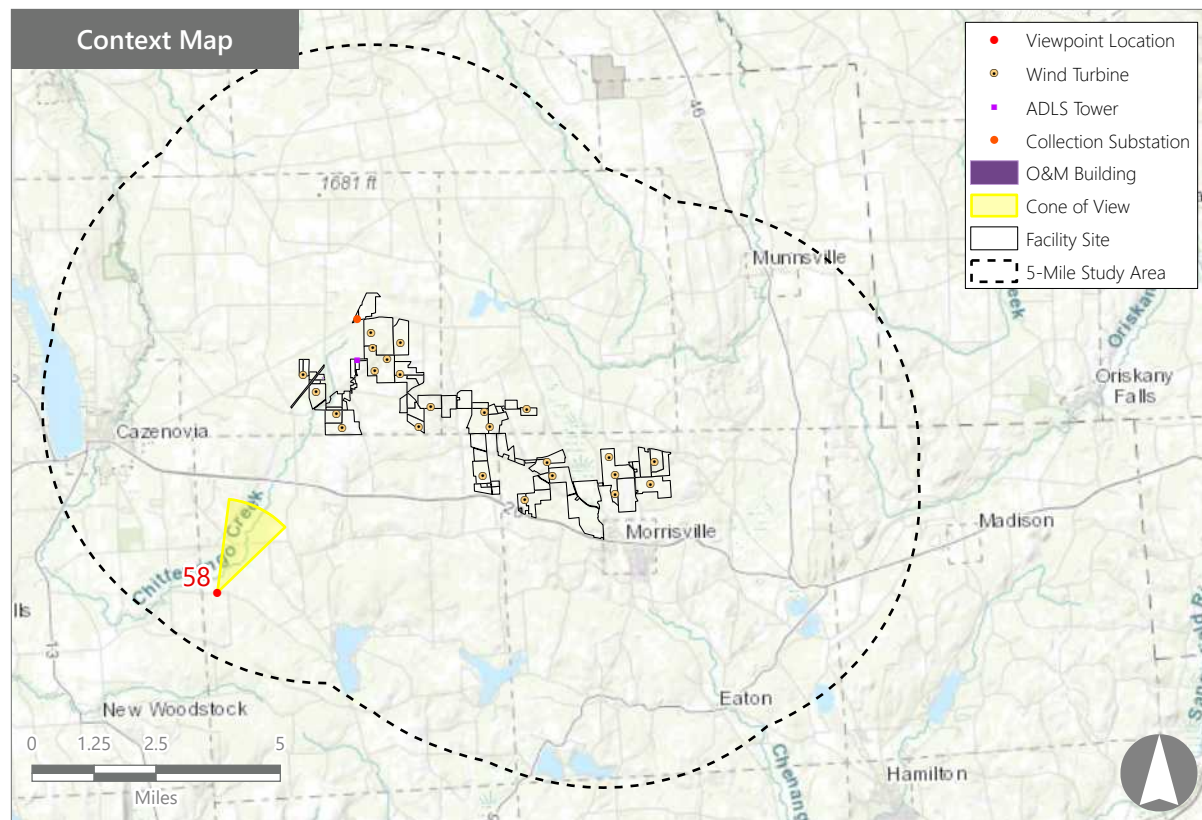
PHOTOGRAPH INFORMATION

Date: August 31, 2023
Time: 5:13 PM
Camera: Canon EOS 5D Mark IV
Resolution: 24 Megapixels
Lens Focal Length (35mm equivalent): 50 mm
Camera Elevation: 1,471 feet
Field of View: 39 degrees
Direction of View: North-northeast
Printed Size: 10" x 15"
Viewing Distance:** 21"

NOTES

*Distance as measured from the viewpoint to the closest wind turbine generator within the simulated photograph's field of view

**The simulation is at the correct perspective when printed on an 11 inch by 17 inch sheet at full scale, and viewed approximately 21 inches from the eye of the viewer.



Hoffman Falls Wind Project

Towns of Eaton, Fenner, Nelson, and Smithfield, Madison County, New York

Visual Impact Assessment
 Appendix 8-A

Viewpoint Sensitivity¹:

Scenic Quality:

- Low
- Moderate
- High

Viewer Exposure

Frequency:

- Rare
- Occasional
- Regular/Repeated

Duration of View:

- Short/Brief/Fleeting
- Moderate
- Long

¹Viewpoint Sensitivity information is gathered from rating panel results. Scenic Quality is an average based on Low = 1, Moderate = 2, High = 3. Viewer Exposure reflects all those selected by the review panel.

Contrast Rating Scores²:

Component	Score		Contrast Rating
	Install		
Landform	1.5		Minimal/Moderate
Vegetation	1.2		Minimal
Land Use	1.5		Minimal/Moderate
Water	N/A		N/A
Sky	1.3		Minimal/Moderate
Viewer Activity	1.5		Minimal/Moderate
AVERAGE	1.4		Minimal/Moderate

² Contrast Rating Scale: 0.0 - 0.2 (Insignificant), 0.3 - 0.7 (Insignificant/Minimal), 0.8 - 1.2 (Minimal), 1.3 - 1.7 (Minimal/Moderate), 1.8 - 2.2 (Moderate), 2.3 - 2.7 (Moderate/Appreciable), 2.8 - 3.2 (Appreciable) 3.3 - 3.7 (Appreciable/Strong), 3.8 - 4.0 (Strong).

Contrast Rating - Lowest and Highest Scores:

Component	Post - Install	
	Score	
	Low	High
Landform	1.5	1.5
Vegetation	1.0	1.5
Land Use	1.0	2.5
Water	NA	NA
Sky	1.0	2.0
Viewer Activity	1.0	2.5

Existing View



Proposed View (Post Installation)



Existing View

Viewpoint 58 is located on Hardscrabble Road in the Town of Nelson, approximately 4.2 miles from the nearest proposed wind turbine that would be visible in the selected photo's field of view. This relatively high elevation viewpoint occurs in the Agricultural/Rural Residential LSZ but overlooks an area characterized by more abundant woody vegetation. Typical viewers at this location would be local residents and through-travelers. In the selected view to the north-northeast, a wire fence with weathered wooden posts is present in the foreground but is barely perceptible against the verdant green hayfield located behind it. The hayfield slopes downward toward thick and lush woods that obscure the lower elevations in the middle ground. Above the middle ground tree line, darker rolling hills are seen against a light blue open sky. The distant hills are largely covered with trees and are lightly shrouded in haze. There are discrete patches of agricultural fields with distant agricultural structures visible upon close examination. At least three existing wind turbines are visible against the horizon. However, the light color of the turbines, their distance from the viewer, and the atmospheric conditions reduce their visibility and make them perceptible only upon extended viewing.

Proposed View

With the proposed Project in place, multiple wind turbines are visible on and behind the background hills. The new turbines blend well with the background sky, but the shadow of the reverse face of the turbine blades make them more visible than the existing more distant turbines. The closer location of the new turbines to the viewer also reduces the obscuring properties of the background haze. The new turbines do not significantly change the open agricultural character of the view, but the layering of distant and nearby turbines increases visual clutter above the near and distant tree lines. According to the rating panel, scenic quality of this view with the Project in place may be minimally reduced but would remain high resulting in minimal to moderate contrast.

Hoffman Falls Wind Project

Towns of Eaton, Fenner, Nelson, and Smithfield, Madison County, New York

EXISTING VIEW



0 1 in 2 in
This scale is designed to insure the simulation images are printed at the intended size.

VIEWPOINT 58
Hardscrabble Road

Hoffman Falls Wind Project
Towns of Eaton, Fenner, Nelson, and Smithfield, Madison County, New York



Note: Printed at actual size, the existing view image is 15 inches wide by 10 inches high. At this size and focal length, the existing view image should be viewed from a distance 21 inches from the eye of the viewer.