



Note: The image above is a panorama photograph taken from Buyea Road in the Town of Fenner panning clockwise from east (left) to southwest (right). The green rectangle represents the extent of the simulated photograph.

VIEWPOINT 50
Buyea Road

VIEWPOINT INFORMATION

Location: Buyea Road
Town: Fenner
County: Madison
Latitude: 42.97202° N
Longitude: 75.76444° W

LOCATION INFORMATION

Distance Zone Represented in View: Middle Ground
Viewer Distance*: 1.2 miles
Landscape Similarity Zone: Agricultural/Rural Residential

Viewer/User Group(s): Local Residents, Tourists/Recreational Users

Visually Sensitive Resource(s): Snow Valley Riders Snowmobile Trail, Erie Canalway National Heritage Corridor

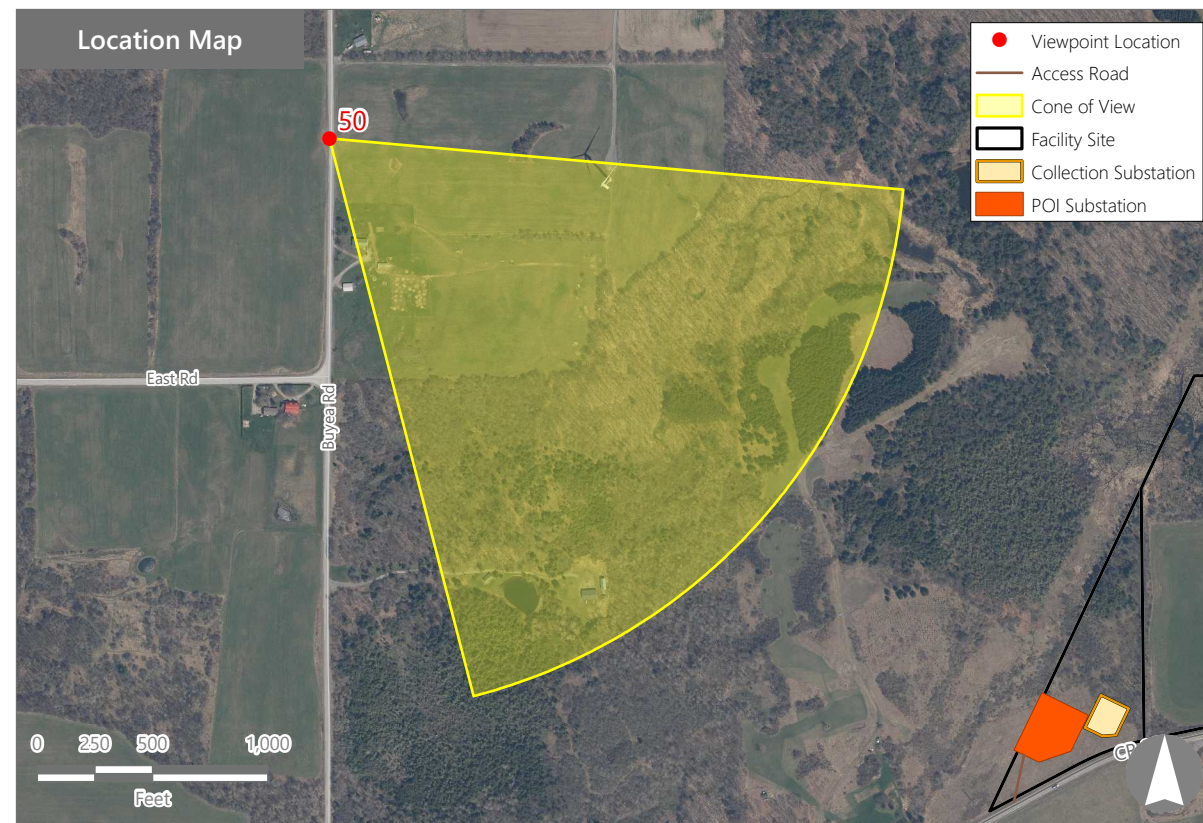
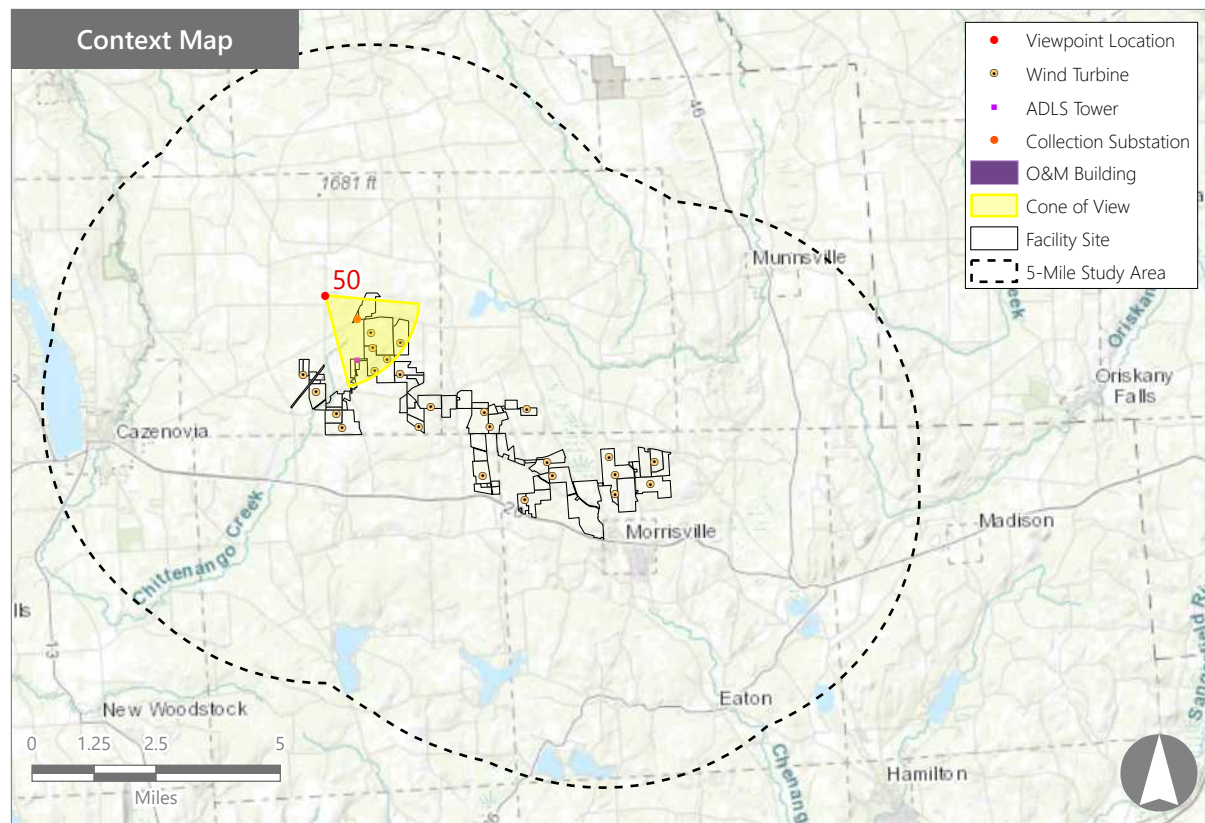
PHOTOGRAPH INFORMATION

Date: August 31, 2023
Time: 3:56 PM
Camera: Canon EOS 5D Mark IV
Resolution: 24 Megapixels
Lens Focal Length (35mm equivalent): 50 mm
Camera Elevation: 1,701 feet
Field of View: 39 degrees
Direction of View: Southeast
Printed Size: 10" x 15"
Viewing Distance:** 21"

NOTES

*Distance as measured from the viewpoint to the closest wind turbine generator within the simulated photograph's field of view

**The simulation is at the correct perspective when printed on an 11 inch by 17 inch sheet at full scale, and viewed approximately 21 inches from the eye of the viewer.



Hoffman Falls Wind Project

Towns of Eaton, Fenner, Nelson, and Smithfield, Madison County, New York

Visual Impact Assessment
Appendix 8-A

Viewpoint Sensitivity¹:

Scenic Quality:

- Low
- Moderate
- High

Viewer Exposure

Frequency:

- Rare
- Occasional
- Regular/Repeated

Duration of View:

- Short/Brief/Fleeting
- Moderate
- Long

¹Viewpoint Sensitivity information is gathered from rating panel results. Scenic Quality is an average based on Low = 1, Moderate = 2, High = 3. Viewer Exposure reflects all those selected by the review panel.

Contrast Rating Scores²:

Component	Score		Contrast Rating
	Install		
Landform	1.7		Minimal/Moderate
Vegetation	1.7		Minimal/Moderate
Land Use	2.0		Moderate
Water	N/A		N/A
Sky	2.7		Moderate/Appreciable
Viewer Activity	2.0		Moderate
AVERAGE	2.0		Moderate

² Contrast Rating Scale: 0.0 - 0.2 (Insignificant), 0.3 - 0.7 (Insignificant/Minimal), 0.8 - 1.2 (Minimal), 1.3 - 1.7 (Minimal/Moderate), 1.8 - 2.2 (Moderate), 2.3 - 2.7 (Moderate/Appreciable), 2.8 - 3.2 (Appreciable) 3.3 - 3.7 (Appreciable/Strong), 3.8 - 4.0 (Strong).

Contrast Rating - Lowest and Highest Scores:

Component	Post - Install	
	Score	
	Low	High
Landform	0.5	3.0
Vegetation	0.5	3.0
Land Use	1.0	3.0
Water	NA	NA
Sky	2.0	3.0
Viewer Activity	1.5	3.0

Existing View



Proposed View (Post Installation)



Existing View

Viewpoint 50 is located on Buyea Road in the Town of Fenner, approximately 1.2 miles from the nearest proposed wind turbine that would be visible in the selected photograph's field of view. This viewpoint occurs in the Agricultural/Rural Residential LSZ and is typical of views available to local residents and recreational users of bike and snowmobile trails in the area. These views feature a gently rolling rural landscape comprised of large open fields, woodlots, and scattered farms, homes, and wind turbines. The selected photos present a panorama in which a section of Buyea Road is visible in the immediate foreground along the right edge of the view. The far left of the existing southeast view includes an open agricultural field that rises in a gentle undulating fashion from the immediate foreground to a middle ground hilltop where a large wind turbine flanked on both sides by patches of forest vegetation extends into the sky. The rolling topography slopes gently toward scattered farm equipment and decorative trees that edge an agricultural/residential lot backed by fields and a hedgerow that gently rise to more distant residential yards and a densely vegetated horizon line. Due to its proximity to the viewer, the turbine's large size and details of its form are clearly visible as is the lattice work of a nearby communication tower. The turbines white color and the motion of its rotor blades make this turbine a dominant focal point in the view. The rolling topography and background vegetation enclose the view and block views of more distant landscape features. The rating panel indicated that the existing view was well composed and visually interesting, resulting in moderate to high scenic quality.

Proposed View

With the proposed Facility in place, additional more distant wind turbines are now visible across much of the horizon. The new turbines are located beyond the crest of the hill which screens visibility to lower portions the turbine towers. Although the new turbines appear as an extension of the existing Facility, the quantity of additional turbines increases the intensity of development in the view. Their vertical line and angular form contrasts with the overall horizontality and rolling forms of the existing landscape, and they add visual clutter to the horizon. However, open agricultural fields and woodlots throughout the view maintain the existing rural agricultural character, and the new turbines do not appear out of character or scale with the working agricultural landscape that already includes wind turbines. However, the spread of turbines across the horizon now makes wind energy generation a more dominant land use. According to the rating panel, the addition of the new turbines may somewhat reduce the scenic quality of the view but could also add visual interest for some viewers.

Hoffman Falls Wind Project

Towns of Eaton, Fenner, Nelson, and Smithfield, Madison County, New York

EXISTING VIEW



0 1 in 2 in
This scale is designed to insure the simulation images are printed at the intended size.

VIEWPOINT 50
Buyea Road

Hoffman Falls Wind Project
Towns of Eaton, Fenner, Nelson, and Smithfield, Madison County, New York



Note: Printed at actual size, the existing view image is 15 inches wide by 10 inches high. At this size and focal length, the existing view image should be viewed from a distance 21 inches from the eye of the viewer.

PHOTOSIMULATION



Hoffman Falls Wind Project

Towns of Eaton, Fenner, Nelson, and Smithfield, Madison County, New York

VIEWPOINT 50

Buyea Road

0 1 in 2 in

This scale is designed to insure the simulation images are printed at the intended size.

Note: Printed at actual size, the resulting simulation image is 15 inches wide by 10 inches high. At this size and focal length, the simulation should be viewed from a distance 21 inches from the eye of the viewer.