



Note: The image above is a panorama photograph taken from Brooks Road in the Town of Smithfield panning clockwise from southwest (left) to north (right). The green rectangle represents the extent of the simulated photograph.

**VIEWPOINT 42**  
Brooks Road

**VIEWPOINT INFORMATION**

**Location:** Brooks Road  
**Town:** Smithfield  
**County:** Madison  
**Latitude:** 42.93223° N  
**Longitude:** 75.69047° W

**LOCATION INFORMATION**

**Distance Zone Represented in View:** Foreground  
**Viewer Distance\*:** 0.5 mile  
**Landscape Similarity Zone:** Agricultural/Rural  
 Residential  
**Viewer/User Group(s):** Local Residents  
**Visually Sensitive Resource(s):** Erie Canalway  
 National Heritage Corridor

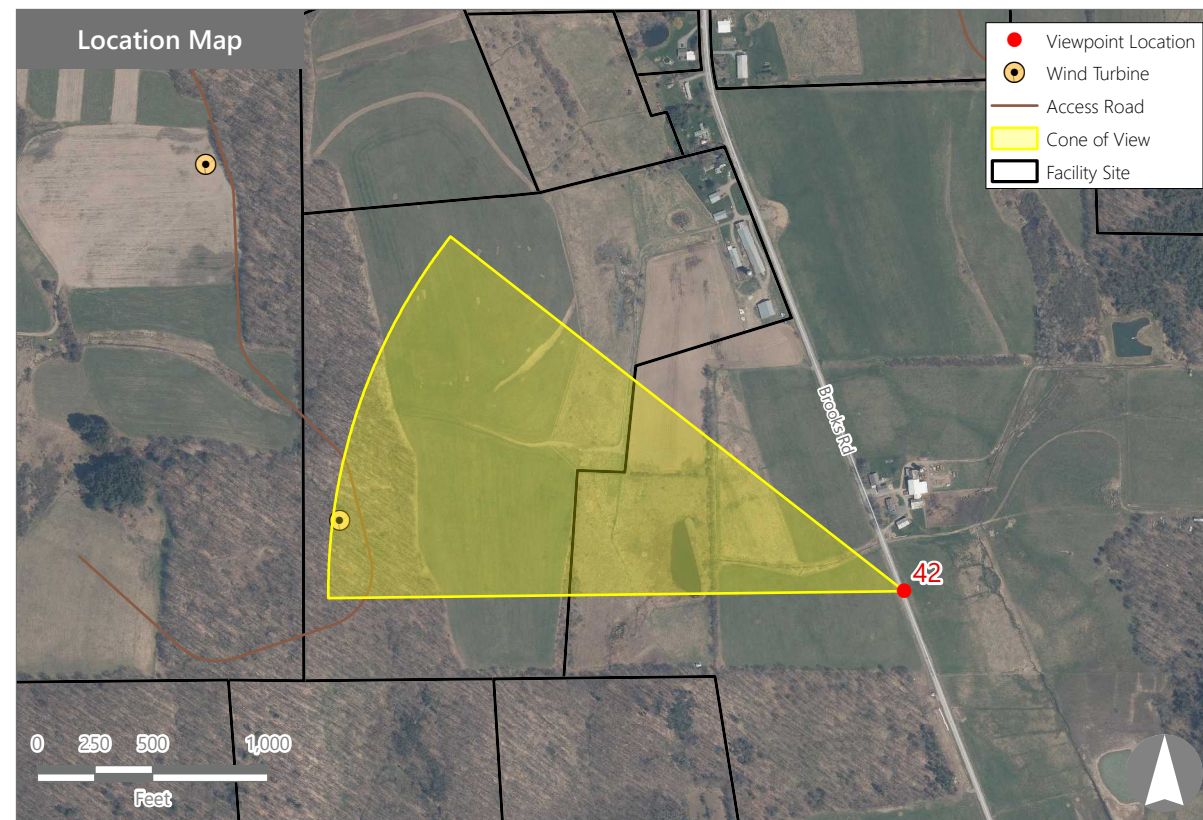
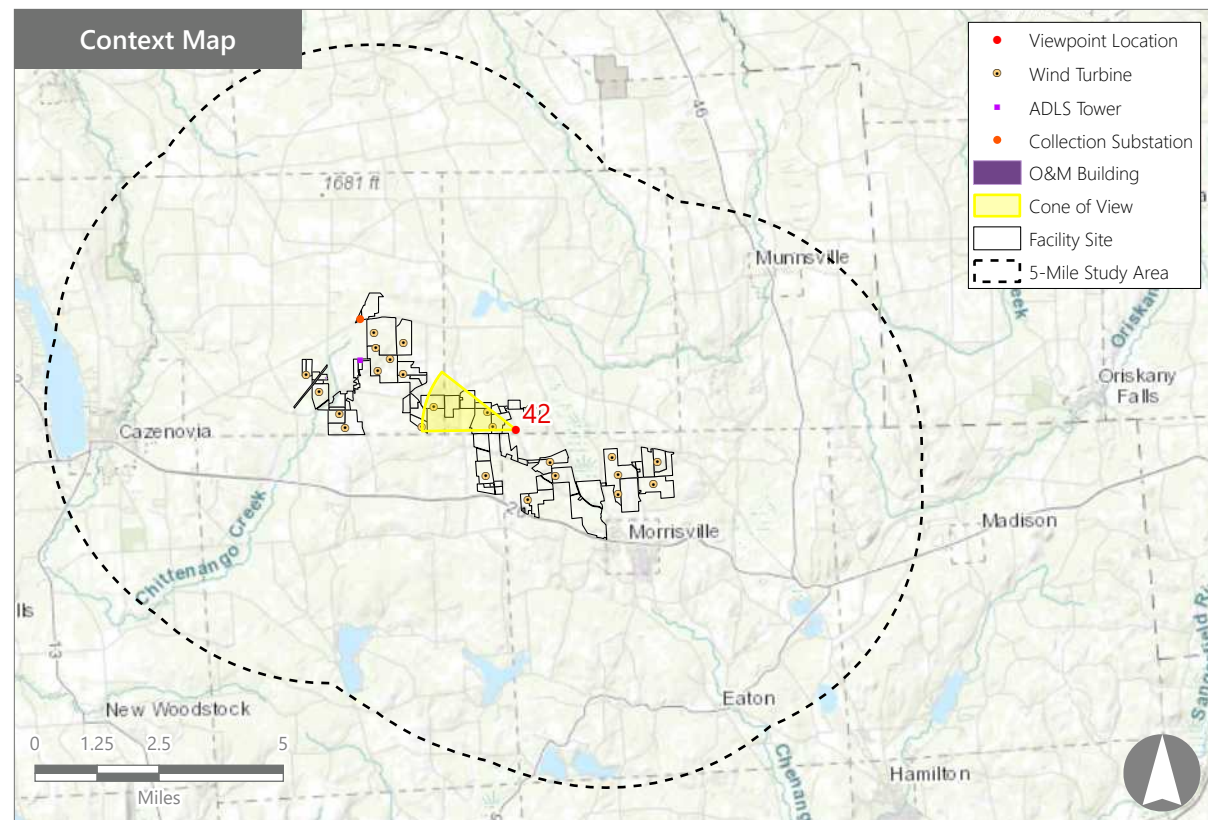
**PHOTOGRAPH INFORMATION**

**Date:** August 31, 2023  
**Time:** 2:41 PM  
**Camera:** Canon EOS 5D Mark IV  
**Resolution:** 24 Megapixels  
**Lens Focal Length (35mm equivalent):** 50 mm  
**Camera Elevation:** 1,491 feet  
**Field of View:** 39 degrees  
**Direction of View:** Northwest  
**Printed Size:** 10" x 15"  
**Viewing Distance\*\*:** 21"

**NOTES**

\*Distance as measured from the viewpoint to the closest wind turbine generator within the simulated photograph's field of view

\*\*The simulation is at the correct perspective when printed on an 11 inch by 17 inch sheet at full scale, and viewed approximately 21 inches from the eye of the viewer.



**Hoffman Falls Wind Project**

Towns of Eaton, Fenner, Nelson, and Smithfield, Madison County, New York

Visual Impact Assessment  
Appendix 8-A

**Viewpoint Sensitivity<sup>1</sup>:**

**Scenic Quality:**

- Low
- Moderate
- High

**Viewer Exposure**

**Frequency:**

- Rare
- Occasional
- Regular/Repeated

**Duration of View:**

- Short/Brief/Fleeting
- Moderate
- Long

<sup>1</sup>Viewpoint Sensitivity information is gathered from rating panel results. Scenic Quality is an average based on Low = 1, Moderate = 2, High = 3. Viewer Exposure reflects all those selected by the review panel.

**Contrast Rating Scores<sup>2</sup>:**

Component	Score		Contrast Rating
	Install		
Landform	2.3		Moderate/Appreciable
Vegetation	2.3		Moderate/Appreciable
Land Use	2.3		Moderate/Appreciable
Water	N/A		N/A
Sky	2.7		Moderate/Appreciable
Viewer Activity	2.5		Moderate/Appreciable
<b>AVERAGE</b>	<b>2.4</b>		<b>Moderate/Appreciable</b>

<sup>2</sup> Contrast Rating Scale: 0.0 - 0.2 (Insignificant), 0.3 - 0.7 (Insignificant/Minimal), 0.8 - 1.2 (Minimal), 1.3 - 1.7 (Minimal/Moderate), 1.8 - 2.2 (Moderate), 2.3 - 2.7 (Moderate/Appreciable), 2.8 - 3.2 (Appreciable) 3.3 - 3.7 (Appreciable/Strong), 3.8 - 4.0 (Strong).

**Contrast Rating - Lowest and Highest Scores:**

Component	Post - Install	
	Score	
	Low	High
Landform	0.5	3.5
Vegetation	1.5	3.5
Land Use	2.0	3.0
Water	NA	NA
Sky	2.0	3.0
Viewer Activity	2.0	3.0

**Existing View**



**Proposed View (Post Installation)**



**Existing View**

Viewpoint 42 is located on Brook Road in the Town of Smithfield, approximately 0.5 miles from the nearest proposed wind turbine that would be visible in the selected photo's field of view. This viewpoint is in the Agricultural/Rural Residential LSZ and is representative of views available to residents from their homes and local roads. This portion of the VSA includes a mix of fields and forests interspersed with widely scattered farms and rural homes. The existing view to the northwest from this location features an open hay field in the foreground that rises gently to a broken hedgerow that extends across the middle ground of the view. Beyond the hedgerow, the land continues to rise to a high point where open fields and treetops define the horizon line. These background features, as well as trees in the middle ground hedgerow, block views of other more distant landscape features. The abundance of open fields, elevated viewer perspective, and the clear blue sky overhead give this view an open, expansive feel. It has a strong rural/agricultural character and moderate to appreciable scenic quality.

**Proposed View**

With the proposed Project in place, a single large wind turbine has been added to the left side of the view. The base of the turbine is screened by vegetation in the middle ground hedgerow, but otherwise it is fully exposed. Due to its proximity to the viewer, the turbine appears tall, and its scale contrast with the existing vegetation is notable. Shadowing and reflection of the sun also increase the turbine's color contrast with the sky. Although trees in the hedgerow represent some other vertical landscape features that extend into the sky, the wind turbine is substantially taller, and becomes a prominent new focal point in this view. Although other developed features occur outside the photo's field of view, the turbine is the only developed feature in the selected photo, and its scale, form, and texture are in contrast with other natural and built features in the area. While the rural/agricultural character of this view will remain, the presence of the single unscreened turbine will alter the view's scenic quality and result in moderate/ appreciable contrast.

**Hoffman Falls Wind Project**

Towns of Eaton, Fenner, Nelson, and Smithfield, Madison County, New York

EXISTING VIEW



0 1 in 2 in  
This scale is designed to insure the simulation images are printed at the intended size.

VIEWPOINT 42  
Brooks Road

**Hoffman Falls Wind Project**  
Towns of Eaton, Fenner, Nelson, and Smithfield, Madison County, New York



*Note: Printed at actual size, the existing view image is 15 inches wide by 10 inches high. At this size and focal length, the existing view image should be viewed from a distance 21 inches from the eye of the viewer.*

PHOTOSIMULATION



Note: Printed at actual size, the resulting simulation image is 15 inches wide by 10 inches high. At this size and focal length, the simulation should be viewed from a distance 21 inches from the eye of the viewer.

0 1 in 2 in  
This scale is designed to insure the simulation images are printed at the intended size.

VIEWPOINT 42  
Brooks Road

**Hoffman Falls Wind Project**  
Towns of Eaton, Fenner, Nelson, and Smithfield, Madison County, New York

