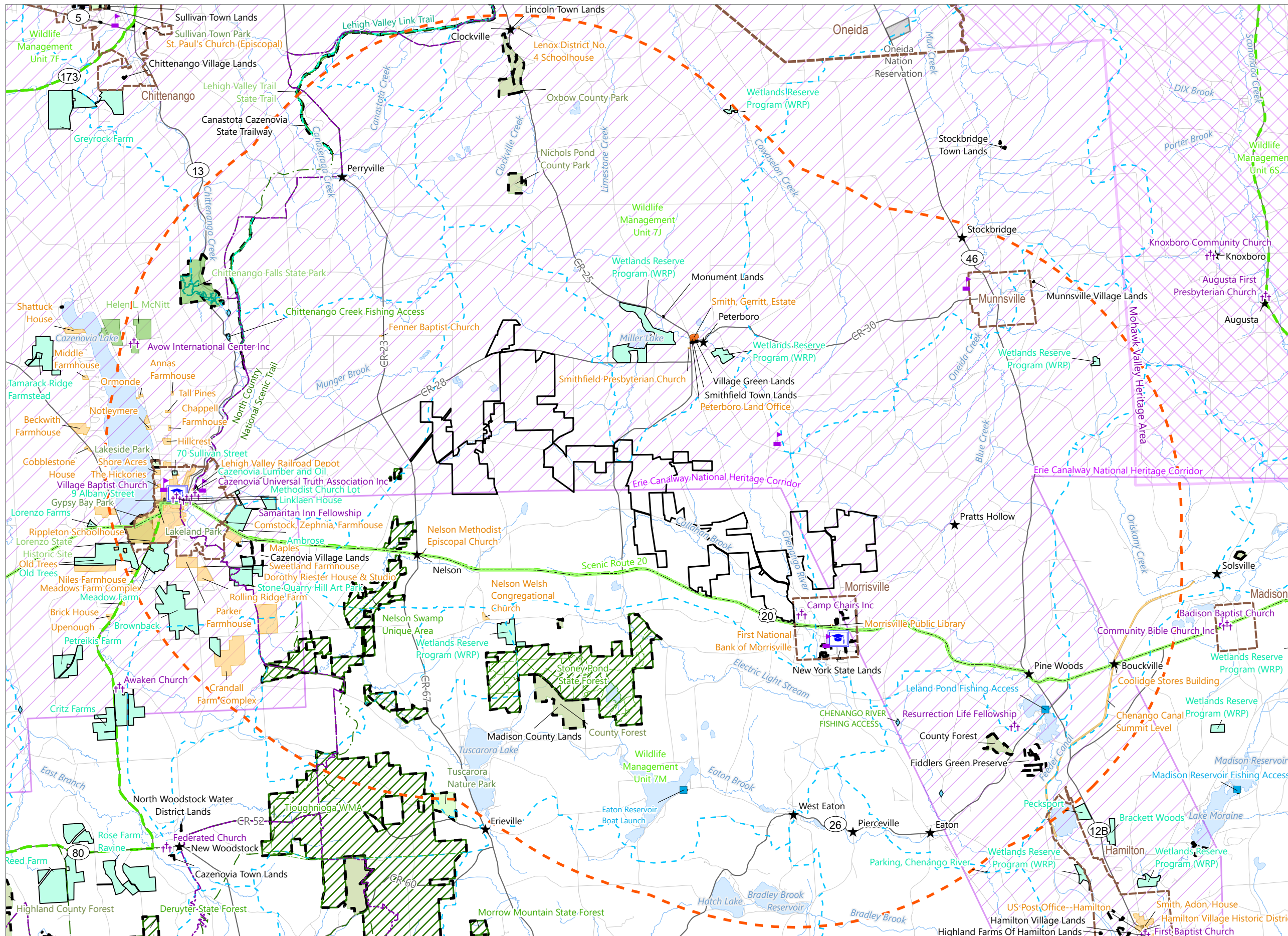


**Figure 3-9. Recreational and Other Land Uses**

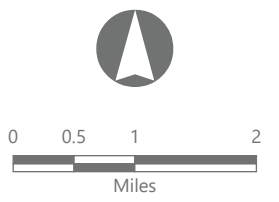


## Hoffman Falls Wind

Towns of Eaton, Fenner, Nelson and Smithfield, Madison County, New York

**94-c Permit Application  
Matter No. 23-00038**

- ★ Hamlet
- 🏫 Public School
- 🎓 College
- ✝️ Place of Worship
- 🎣 Public Fishing Rights Stream
- 🚤 Boat Launch
- Trail on State Land
- State Park Trail
- Finger Lakes Trail
- NPS Long Distance Trail
- Bike Route
- Snowmobile Trail
- Scenic Byway
- 🏛️ National Historic Landmark
- 🏠 NRHP-Listed Site
- 🏠 American Indian Areas
- 🌿 Conservation Easement
- 🌳 State Park
- 🌿 NYSDEC Land
- 🌳 County Recreation
- 🌳 Municipal Recreation
- 🌿 Wildlife Management Unit
- 🌿 National Heritage Area
- 🌿 State Heritage Area
- 🏠 Facility Site
- 📏 5-Mile Study Area



Prepared February 7, 2024  
Basemap: Esri StreetMap North America, 2008