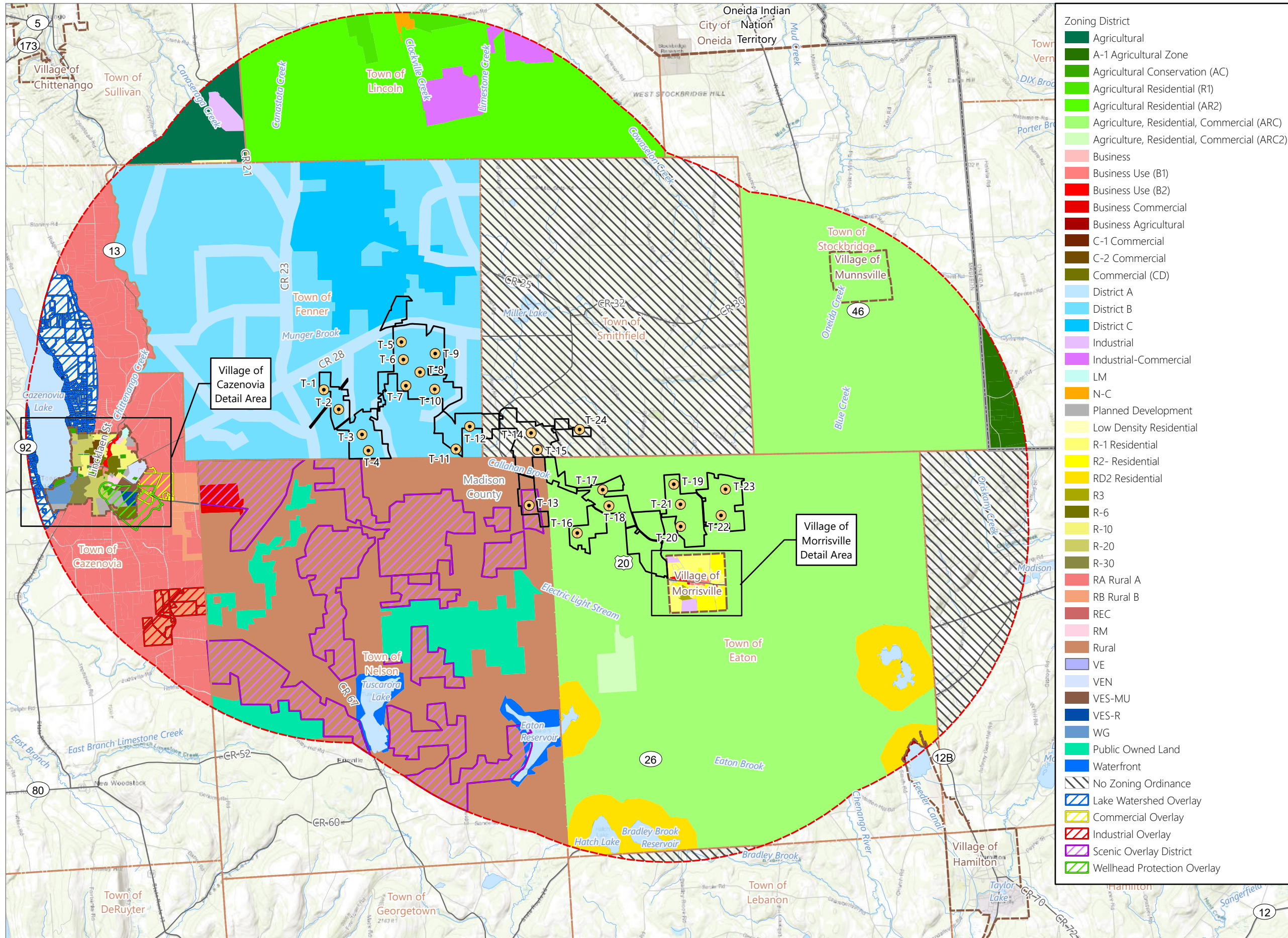


Figure 3-6. Zoning Districts

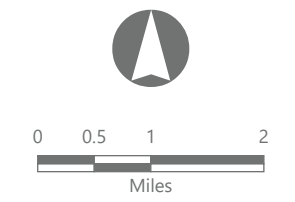


Hoffman Falls Wind

Towns of Eaton, Fenner, Nelson and Smithfield, Madison County, New York

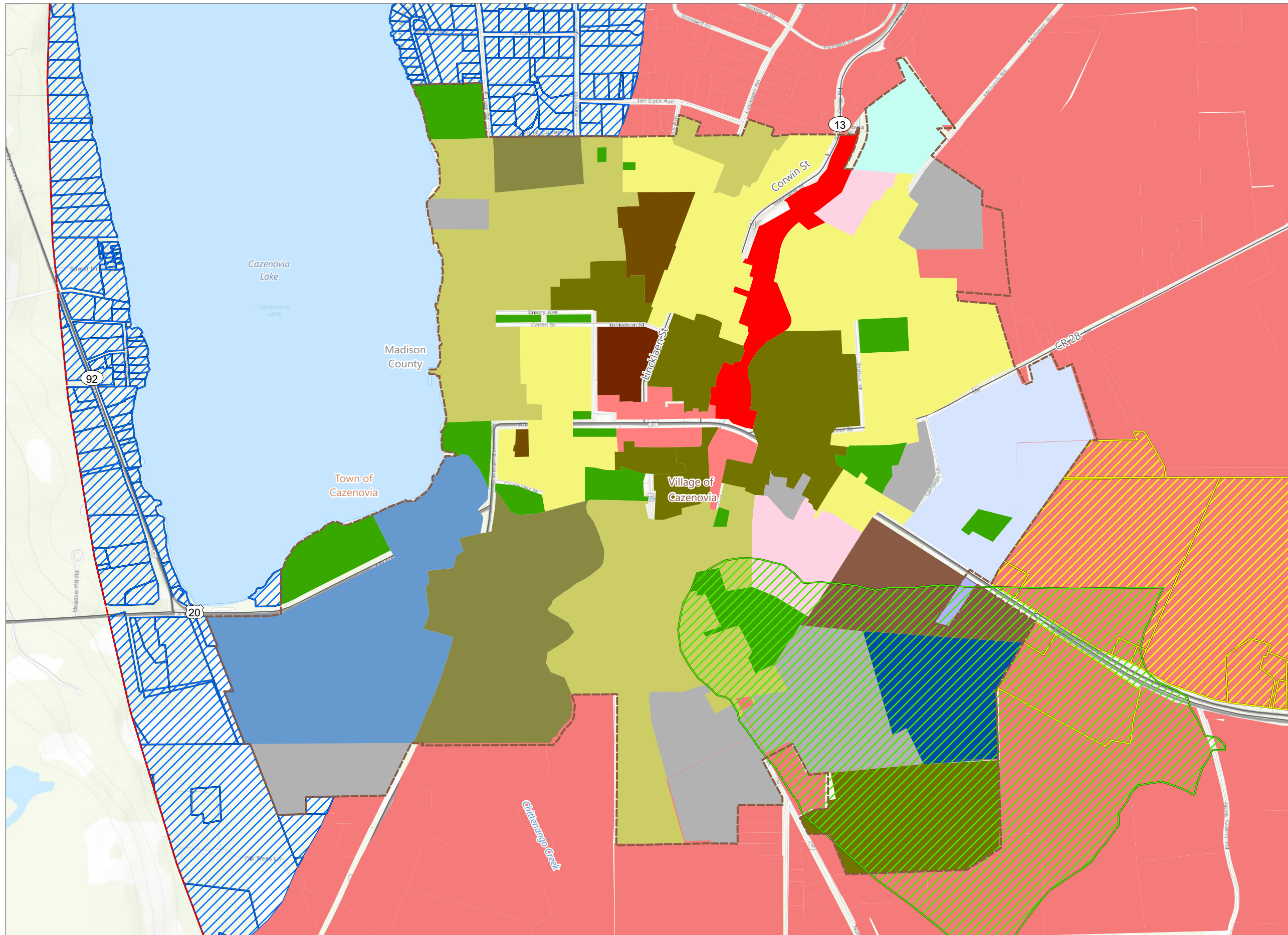
94-c Permit Application
Matter No. 23-00038

- Facility Components
- Wind Turbine
 - Facility Site
 - 5-Mile Study Area



Prepared February 7, 2024
Basemap: Esri "World Topographic Map" map service

Figure 3-6. Zoning Districts

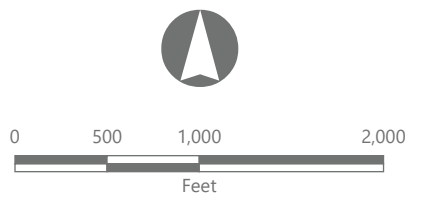


Hoffman Falls Wind

Towns of Eaton, Fenner, Nelson and Smithfield, Madison County, New York

**94-c Permit Application
Matter No. 23-00038**

- Zoning District
- Agricultural Conservation (AC)
 - Business Use (B1)
 - Business Use (B2)
 - C-1 Commercial
 - C-2 Commercial
 - Commercial (CD)
 - LM
 - Planned Development
 - R-6
 - R-10
 - R-20
 - R-30
 - RA Rural A
 - RM
 - VE
 - VEN
 - VES-MU
 - VES-R
 - WG
 - Lake Watershed Overlay
 - Commercial Overlay
 - Wellhead Protection Overlay
- Facility Components
- 5-Mile Study Area



Prepared February 5, 2024
Basemap: Esri "World Topographic Map" map service

Figure 3-6. Zoning Districts

Hoffman Falls Wind

Towns of Eaton, Fenner, Nelson and Smithfield, Madison County, New York

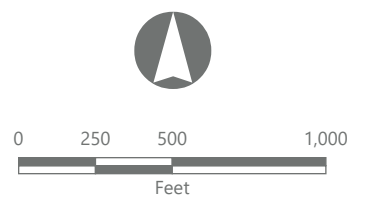
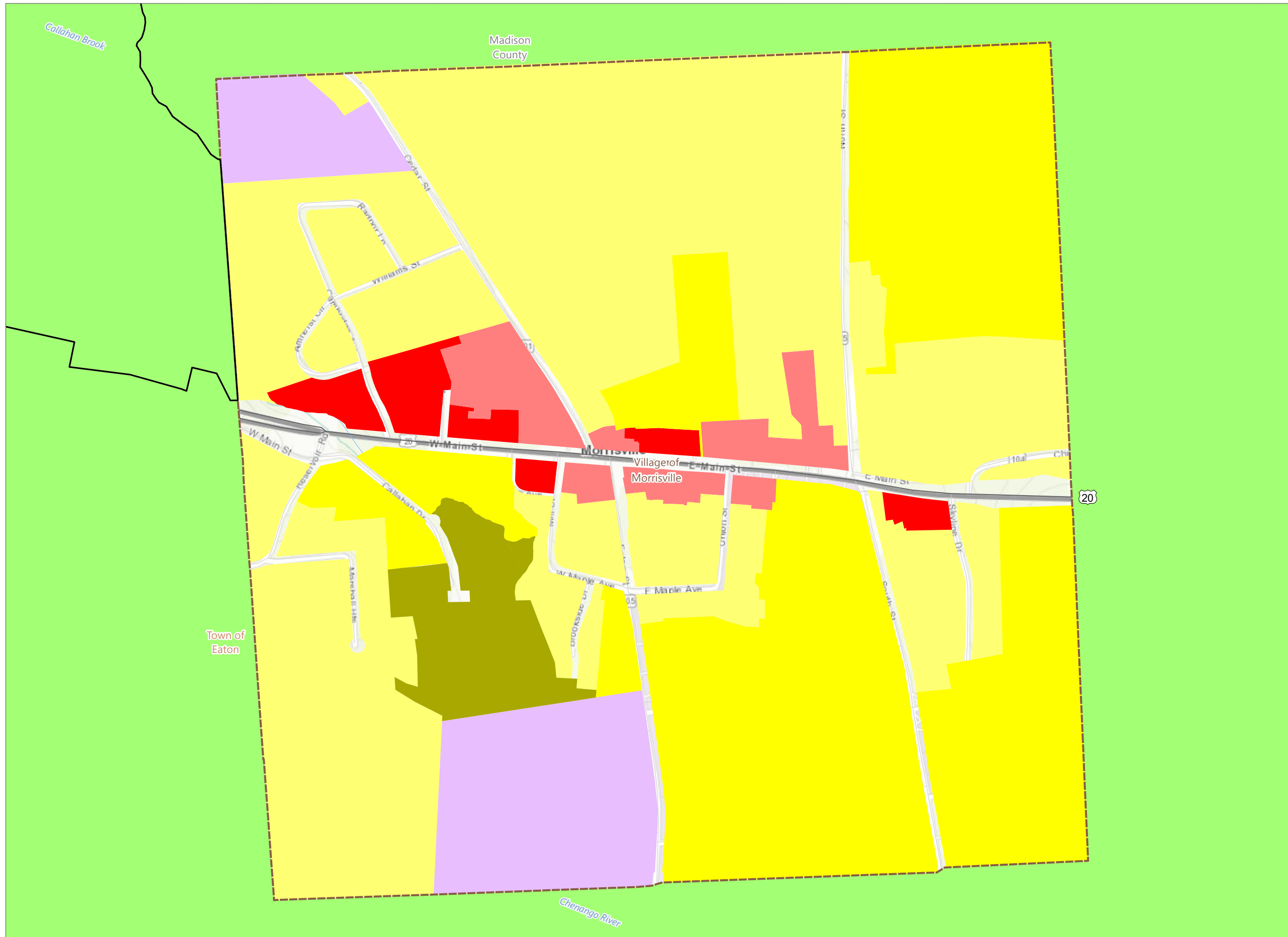
**94-c Permit Application
Matter No. 23-00038**

Zoning District

- Agriculture, Residential, Commercial (ARC)
- Business Use (B1)
- Business Use (B2)
- Industrial
- R-1 Residential
- R2- Residential
- R3

Facility Components

- Facility Site
- 5-Mile Study Area



Prepared February 7, 2024
Basemap: Esri "World Topographic Map" map service