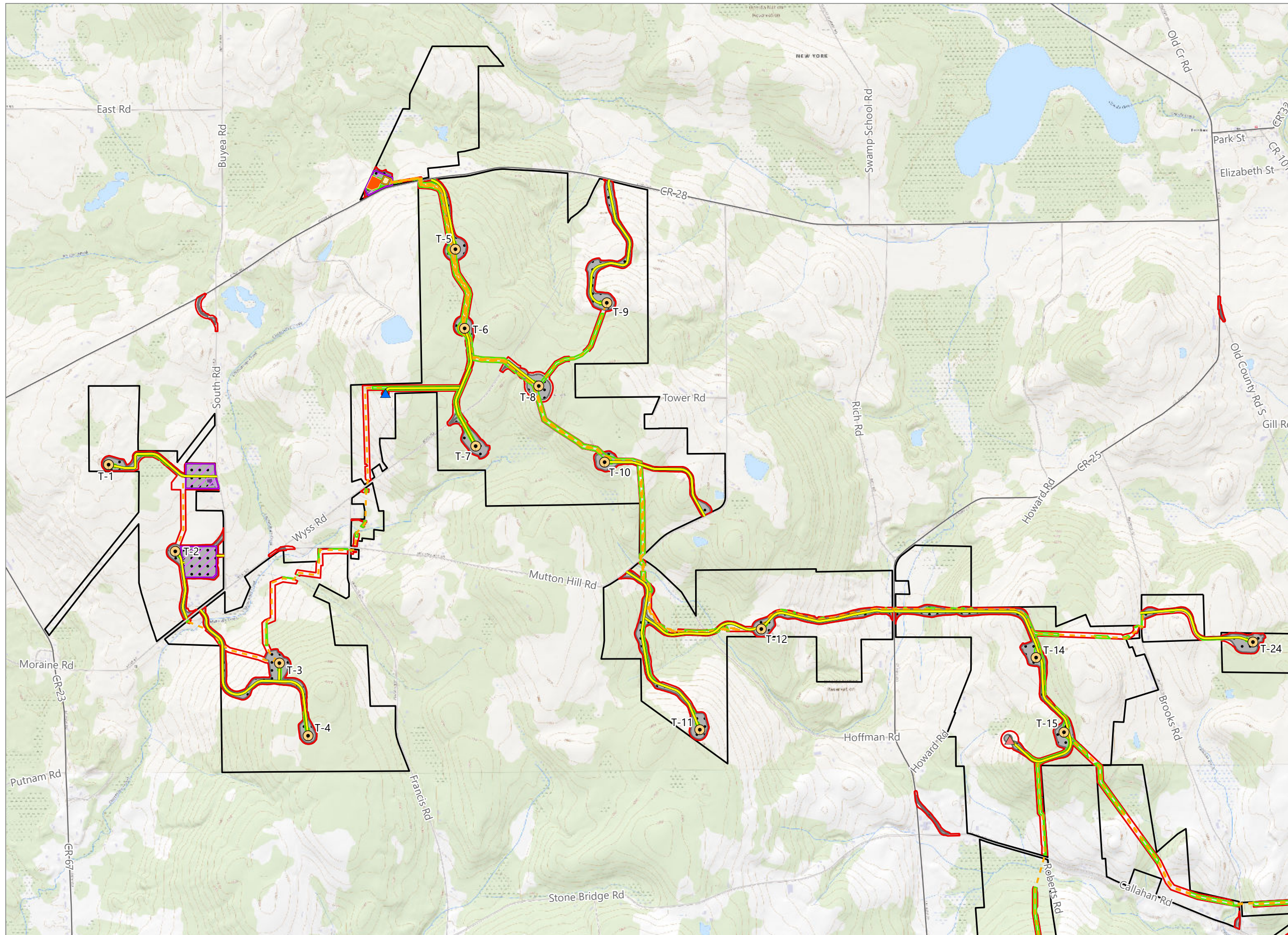


Figure 3-1. Topographic Map

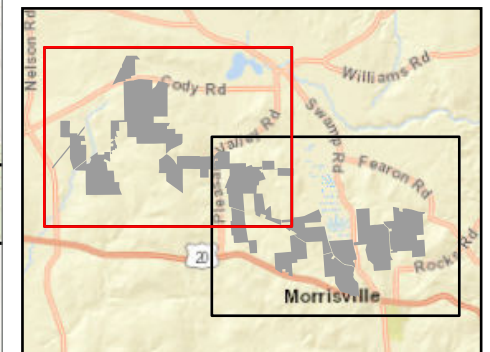


### Hoffman Falls Wind

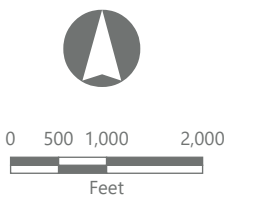
Towns of Eaton, Fenner, Nelson and Smithfield, Madison County, New York

**94-c Permit Application  
Matter No. 23-00038**

- Wind Turbine
- ADLS Tower
- Permanent MET Tower
- Access Road
- Collection Line
- Collection Substation
- POI Substation
- O&M Building
- Laydown Yard
- Limit of Grading
- Limit of Vegetation Management
- Limit of Disturbance
- Facility Site



Sheet 1 of 2

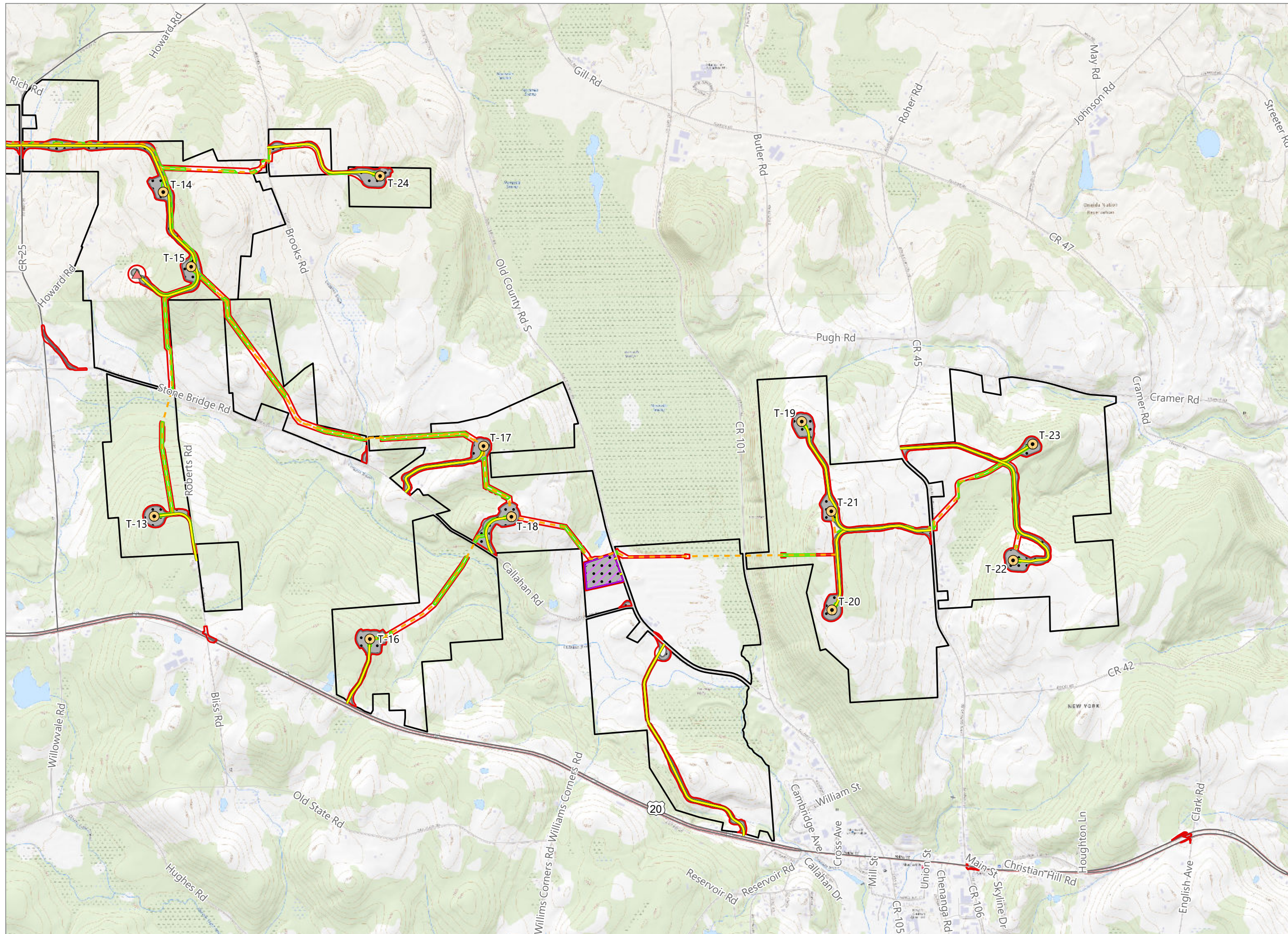


1:24,000

Prepared February 9, 2024  
Basemap: Esri "USGS Topo" map service



Figure 3-1. Topographic Map

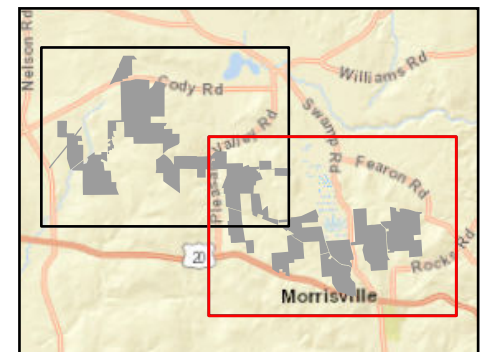


### Hoffman Falls Wind

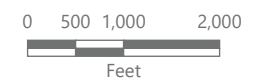
Towns of Eaton, Fenner, Nelson and Smithfield, Madison County, New York

**94-c Permit Application  
Matter No. 23-00038**

- Wind Turbine
- Permanent MET Tower
- Access Road
- Collection Line
- Laydown Yard
- Limit of Grading
- Limit of Vegetation Management
- Limit of Disturbance
- Facility Site



Sheet 2 of 2



1:24,000

Prepared February 9, 2024  
Basemap: Esri "USGS Topo" map service