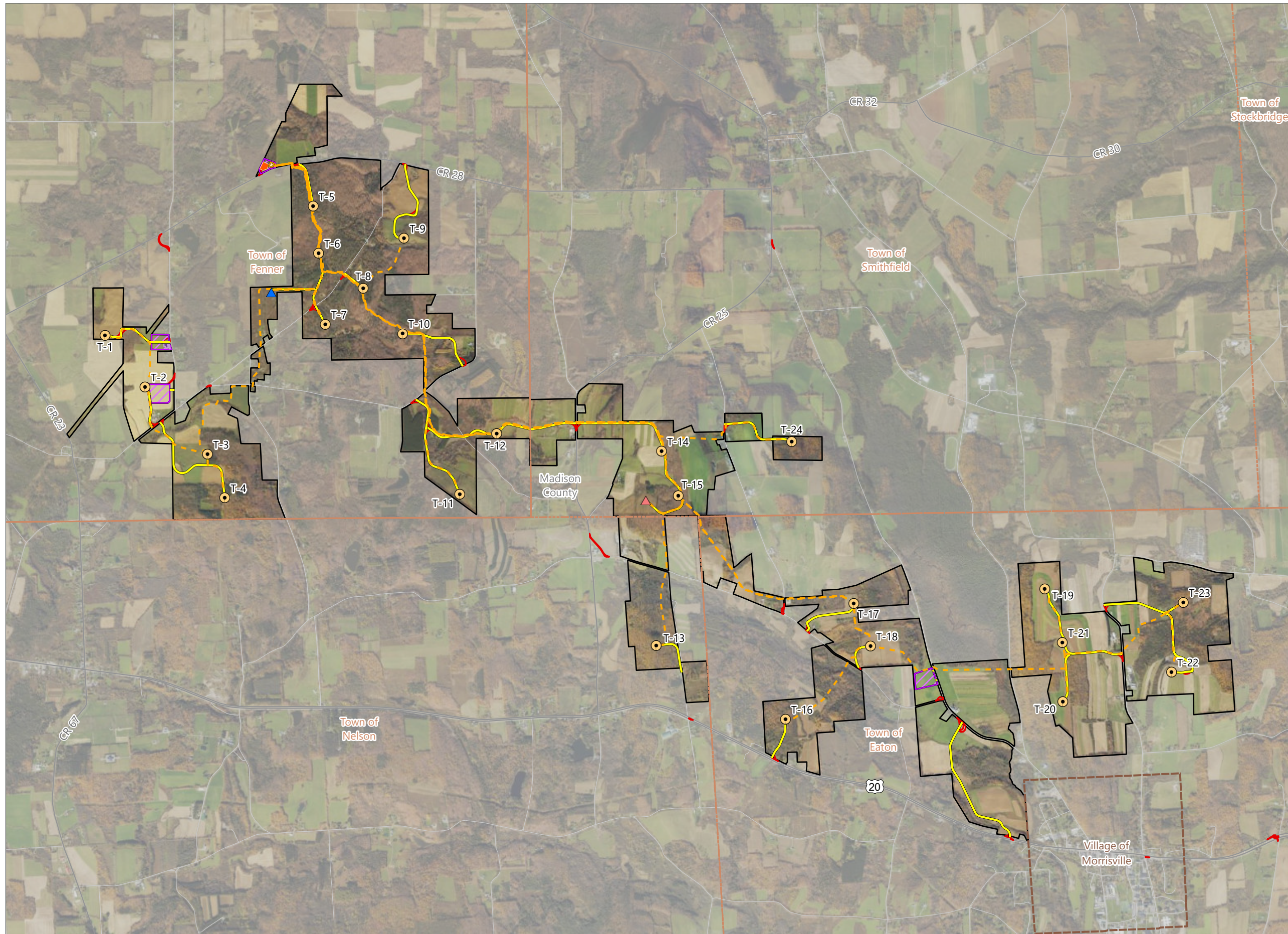


Figure 2-2. Facility Layout



### Hoffman Falls Wind

Towns of Eaton, Fenner, Nelson and  
Smithfield, Madison County,  
New York

**94-c Permit Application  
Matter No. 23-00038**

- Wind Turbine
- ADLS Tower
- Permanent MET Tower
- Access Road
- Collection Line
- Collection Substation
- POI Substation
- O&M Building
- Laydown Yard
- Temporary Turning Improvement
- Facility Site



Prepared February 5, 2024  
Basemap: USDA NAIP "2022 New York 60cm" orthoimagery map  
service